

MAIDENHEAD METEOROLOGICAL OBSERVATIONS FOR SEPTEMBER 2022

DD	N	dd	ff	ww	VV	0900GMT		Temperature			Soil temperatures (depth in cm)						E	SS	Rain	Sun	S	L	H	T	G	F	Press	Rain hrs	Fr. hrs	Pch Evap			
						Temp	RH	Max	Min	Gmin	5	10	20	30	50	100																	
01	7	05	09	02	97	19.7	75	24.0	15.3	13.0	17.1	17.3	17.5	18.4	18.3	18.0	90	0	0.4	1.9	0	0	0	0	0	0	1020.0	0.3	0.0	2.4	Number of days with 2022 normal Snow/sleet falling 0 0.0 50% snow cover 09GMT Hail or ice pellets 0 0.1 Thunder 3 1.0 Gale 0 0.0 Fog at 09GMT 0 0.2 Air frost 0 0.0 Ground frost 0 0.2 0.2mm precipitator 13 12.0 1.0mm precipitator 10 7.9 5.0mm precipitator 7 3.2 No sunshine 1 2.4 Close to average temperatures overall, but wetter and duller than normal. Three days with thunder early in the month, and the wettest month (although only 74 mm fell) since October 2021. The relative lack of sunshine was due to the rather cloudy and wet start to the month. Soil temperatures fell sharply in the second half of the month.		
02	8	05	02	02	97	19.4	83	25.0	16.5	15.0	17.5	17.7	18.4	18.4	18.2	18.0	10	0	0.2	1.0	0	0	0	0	0	1014.0	0.2	0.0	1.5				
03	7	00	00	10	96	19.4	87	23.6	13.7	11.1	16.9	17.3	18.2	18.6	18.3	18.0	10	0	0.0	3.6	0	0	0	0	0	1009.0	0.0	0.0	1.9				
04	7	18	05	02	97	20.0	80	22.6	16.2	13.2	17.6	17.8	18.5	18.7	18.4	18.0	90	0	5.0	0.4	0	0	0	1	0	0	1013.5	1.1	0.0	3.0			
05	3	18	02	02	97	18.7	96	22.7	13.7	11.2	16.4	17.0	18.1	18.5	18.4	18.0	10	0	8.7	4.4	0	0	0	1	0	0	1016.5	1.0	0.0	1.1			
06	7	18	02	10	96	19.0	92	21.6	15.4	12.9	17.6	17.8	18.4	18.6	18.2	18.0	20	0	13.5	3.4	0	0	0	0	0	0	1012.0	2.9	0.0	1.0			
07	7	13	02	60	96	18.3	97	20.9	14.1	11.7	16.4	16.8	17.7	18.4	18.2	17.9	20	0	7.1	6.0	0	0	0	0	0	0	1009.5	3.9	0.0	1.0			
08	7	18	02	21	96	16.4	96	17.6	13.7	11.1	16.1	16.7	17.5	18.2	18.1	17.9	20	0	17.8	0.4	0	0	0	1	0	0	1004.0	5.2	0.0	0.3			
09	8	27	02	10	96	15.6	96	20.7	15.0	13.5	16.5	16.7	17.4	17.8	17.7	17.8	20	0	2.5	3.5	0	0	0	0	0	0	1006.0	0.2	0.0	0.8			
10	8	31	02	10	96	16.1	97	21.1	11.6	9.2	14.9	15.4	16.4	17.5	17.5	17.6	10	0	0.0	2.1	0	0	0	0	0	0	1015.5	0.0	0.0	1.0			
11	8	00	00	44	04	15.6	98	22.6	11.3	9.5	15.1	15.6	16.5	17.4	17.3	17.5	10	0	0.0	3.7	0	0	0	0	0	0	1019.5	0.0	0.0	1.1			
12	6	13	02	02	97	18.8	94	26.1	14.2	11.3	15.7	16.1	17.0	17.5	17.3	17.4	10	0	0.1	5.4	0	0	0	0	0	0	1012.5	0.1	0.0	1.8			
13	8	05	05	02	97	16.5	73	17.7	16.2	14.7	17.3	17.7	18.1	18.1	17.6	17.4	10	0	6.0	0.0	0	0	0	0	0	0	1011.0	10.5	0.0	0.9			
14	8	36	02	02	97	15.8	95	20.9	14.6	14.1	16.2	16.7	17.2	17.8	17.5	17.4	20	0	tr	7.3	0	0	0	0	0	0	1007.5	0.0	0.0	2.0			
15	6	31	05	02	97	15.0	77	18.6	12.5	10.5	15.0	15.5	16.8	17.3	17.5	17.4	10	0	0.0	2.0	0	0	0	0	0	0	1012.5	0.0	0.0	1.8			
16	3	36	05	02	97	14.5	73	17.4	10.2	8.1	13.5	14.0	16.2	16.7	17.0	17.3	10	0	0.0	7.5	0	0	0	0	0	0	1017.5	0.0	0.0	2.0			
17	1	31	05	02	97	13.1	66	17.4	4.2	3.0	11.0	11.5	15.3	15.8	16.5	17.1	10	0	0.0	11.0	0	0	0	0	0	0	1023.0	0.0	0.0	2.2			
18	4	27	02	02	97	13.0	73	17.9	7.4	5.5	11.5	12.0	14.7	15.2	16.0	16.9	10	0	0.2	6.5	0	0	0	0	0	0	1022.0	0.2	0.0	2.1			
19	8	27	02	02	97	12.8	88	17.8	11.6	9.9	14.0	14.5	14.8	15.4	15.9	16.5	10	0	0.0	1.5	0	0	0	0	0	0	1025.0	0.0	0.0	1.1			
20	5	09	02	02	97	12.9	93	20.1	7.5	5.7	13.5	14.0	15.0	15.5	16.0	16.3	10	0	0.0	4.5	0	0	0	0	0	0	1026.0	0.0	0.0	1.3			
21	2	13	02	02	97	15.8	82	20.8	12.9	12.7	15.5	16.0	16.0	15.7	16.2	16.4	10	0	0.0	4.0	0	0	0	0	0	0	1026.0	0.0	0.0	1.8			
22	6	18	02	02	96	14.3	93	20.7	8.2	7.7	13.5	14.0	15.5	16.0	16.3	16.4	10	0	1.1	6.5	0	0	0	0	0	0	1021.0	2.0	0.0	1.4			
23	6	31	02	01	95	15.2	93	18.8	14.3	12.7	15.0	15.5	15.7	16.1	16.3	16.4	10	0	tr	2.5	0	0	0	0	0	0	1016.0	0.0	0.0	1.1			
24	4	36	02	02	97	13.4	85	18.3	8.3	7.3	12.5	13.0	15.5	15.8	16.1	16.3	10	0	0.0	7.5	0	0	0	0	0	0	1017.0	0.0	0.0	1.6			
25	3	31	05	02	97	12.8	75	17.2	8.2	7.5	13.0	13.5	14.5	15.3	15.7	16.2	10	0	1.7	6.5	0	0	0	0	0	0	1020.6	2.1	0.0	2.0			
26	5	31	05	02	97	13.9	77	15.6	11.0	9.3	13.0	13.5	14.5	15.2	15.5	16.1	10	0	tr	4.0	0	0	0	0	0	0	1002.5	0.0	0.0	2.0			
27	3	27	05	02	97	12.3	75	15.6	8.8	7.9	11.0	11.5	13.5	14.7	15.2	16.0	03	0	tr	3.0	0	0	0	0	0	0	1003.5	0.0	0.0	0.8			
28	2	31	05	02	97	11.9	88	15.1	3.6	1.6	10.0	10.0	12.5	14.1	14.7	15.8	03	0	0.0	7.5	0	0	0	0	0	0	1001.0	0.0	0.0	1.1			
29	4	31	02	02	97	12.1	83	15.3	4.1	1.5	10.1	10.7	12.0	13.6	14.2	15.7	03	0	tr	4.2	0	0	0	0	0	0	1003.0	0.0	0.0	0.9			
30	9	00	00	45	05	9.7	99	16.1	5.8	3.4	10.6	11.1	12.0	13.4	13.9	15.4	03	0	9.7	0.1	0	0	0	0	0	0	1008.5	6.8	0.0	0.8			
Monthly means						15.4	86	19.7	11.3	9.5	14.5	14.9	16.0	16.7	16.8	17.0											1013.9						
Monthly totals																				74.0	121.9							36.5	0.0	43.8			
Highest values						20.0		26.1	16.5	15.0	17.6	17.8	18.5	18.7	18.4	18.0			17.8	11.0								10.5	0.0	3.0			
Lowest values						9.7	66	15.1	3.6	1.5	10.0	10.0	12.0	13.4	13.9	15.4																	
1991-2020 monthly climatological average						82	19.9	10.8	8.4	13.7	14.2	15.3	15.9	15.9	15.9			53.9	146.1										1016.6	37.4	0.0	49.3	

Key

DD: date

07GMT observations

N	cloud cover (oktas, 9=obscured)	dd	wind direction (degrees/10)
ff	wind speed (knots)		
ww	present weather code		
1	cloud decreasing	20	recent drizzle
2	sky not changing	44	fog
3	cloud increasing	63	continuous moderate rain
10	mist	91	light rain after thunderstorm

VV visibility (00-50 metres/100, 94 very poor, 95 poor, 96 moderate, 97 good)

Soil temperatures are for 0700GMT beneath bare soil (5, 10, 20cm) or grass (30, 50, 100cm)

09GMT observations

Temp	temperature (degC)	RH	relative humidity (%)
E	state of ground (00 dry, 10 moist, 20 wet, 90 cracked)	SS	snow depth (cm)
Press	air pressure (mb)		

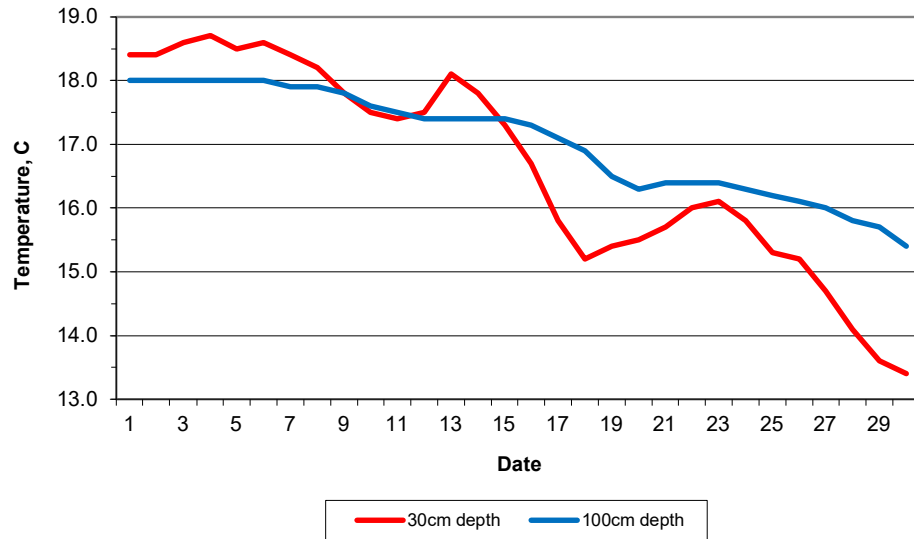
24 hour readings

Max	maximum temperature (degC) beginning 09GMT	Min	minimum temperature (degC) ending 09GMT
Gmin	grass minimum temperature (degC) ending 09GMT	Rain	precipitation beginning 09GMT
Sun	sunshine (hours) sunrise-sunset	Rain hrs	hours of rainfall (>0.1mm/h) 09-09GMT
Fr. Hrs	hours of air frost (00-24GMT)	Pch Evap	Piche evaporation (ml) beginning 09GMT

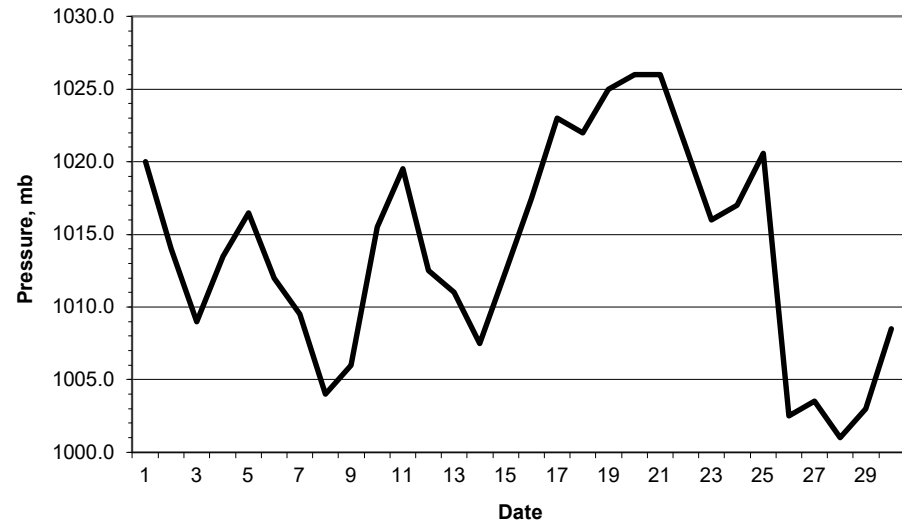
Days with

S	snow(5) or sleet(1) falling	L	50% snow cover at 09GMT	H	hail or ice pellets
T	thunder heard	G	gale	F	fog at 09GMT

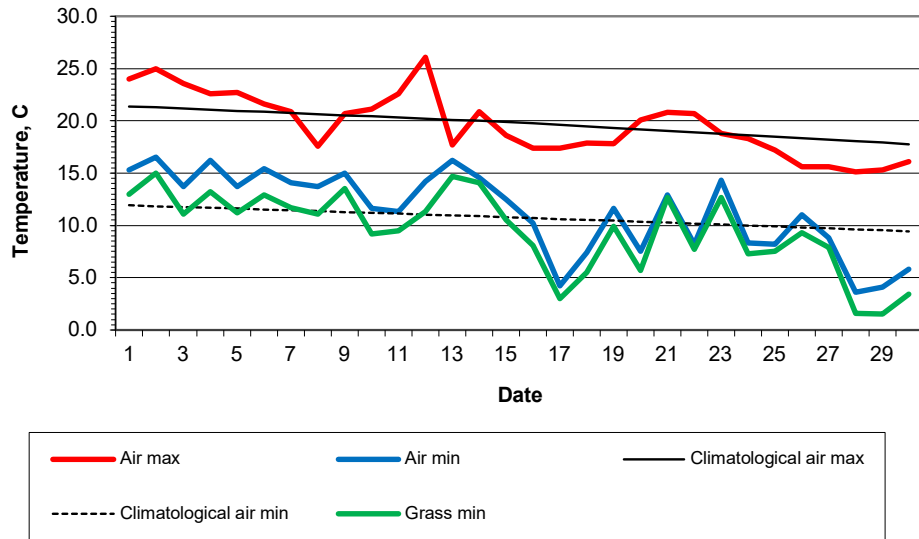
Daily soil temperatures, 0700GMT



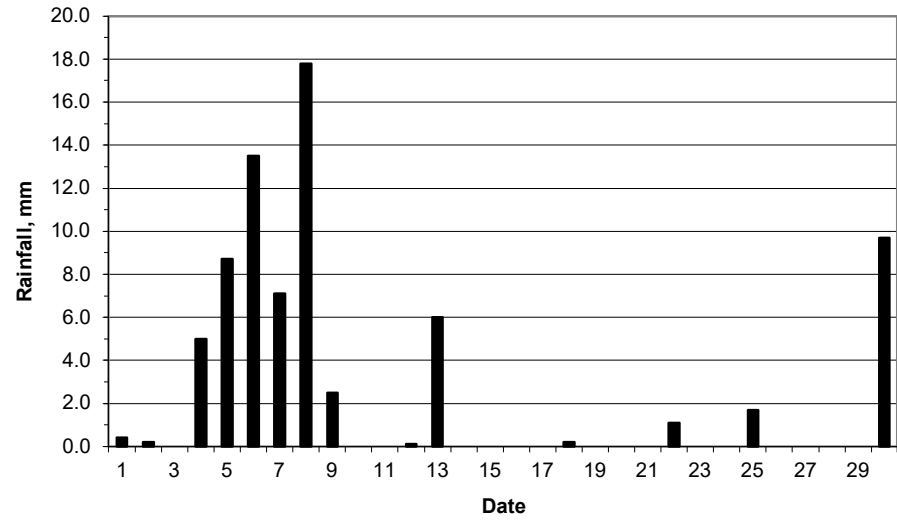
Mean sea level pressure, 0900GMT



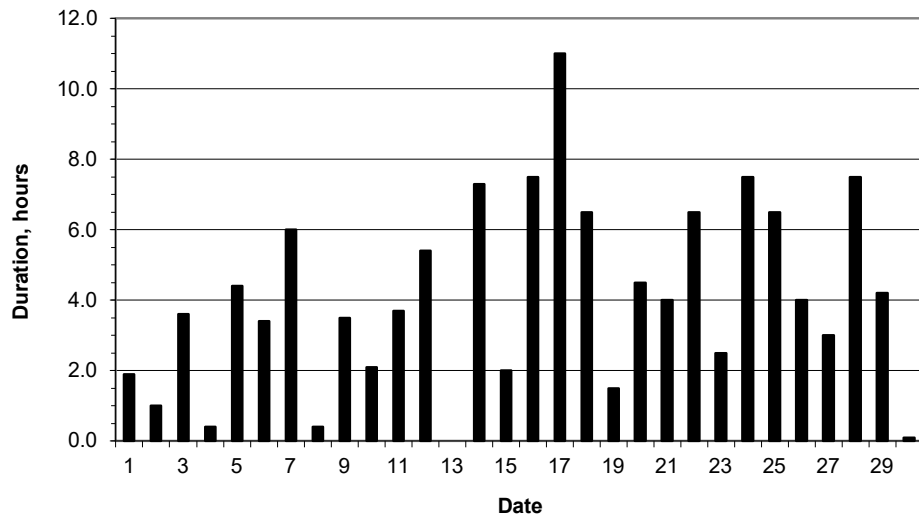
Daily temperature extremes



Daily rainfall



Daily sunshine



Daily evaporation

