

MAIDENHEAD METEOROLOGICAL OBSERVATIONS FOR OCTOBER 2022

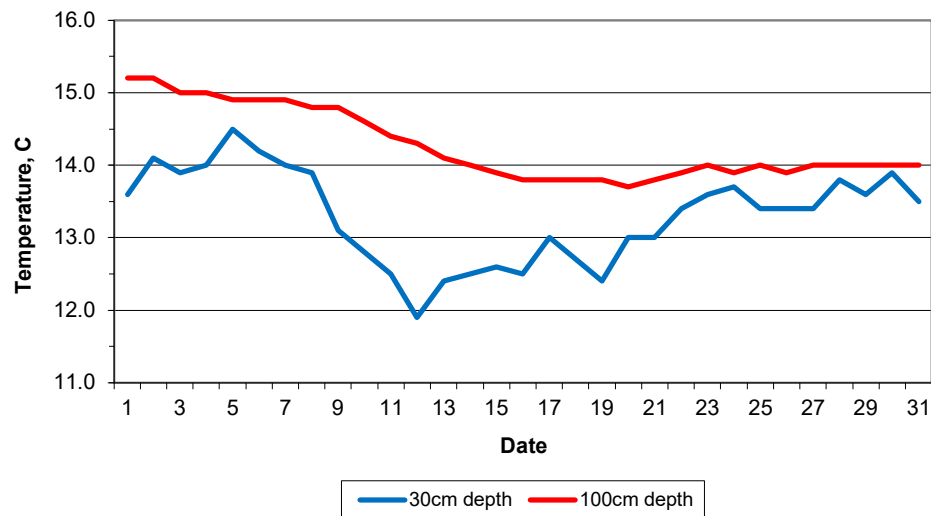
DD	N	dd	ff	ww	VV	0900GMT Temp	RH	Temperature Max	Min	Gmin	Soil temperatures (depth in cm)						E	SS	Rain	Sun	S	L	H	T	G	F	Press	Rain hrs	Fr. hrs	Pch Evap			
											5	10	20	30	50	100																	
01	0	23	02	02	97	14.3	97	18.8	9.7	7.2	11.4	12.0	13.0	13.6	13.8	15.2	20	0	0.1	6.5	0	0	0	0	0	0	1007.0	0.1	0.0	1.6	Number of		
02	8	27	02	60	97	13.4	95	18.1	12.6	10.0	12.9	13.3	13.8	14.1	14.0	15.2	10	0	tr	4.7	0	0	0	0	0	0	1019.5	0.0	0.0	1.0	days with		
03	8	09	02	10	96	9.7	98	18.1	5.7	3.1	10.1	10.8	12.2	13.9	14.1	15.0	10	0	0.0	1.8	0	0	0	0	0	0	1027.0	0.0	0.0	1.1	2022 normal		
04	8	00	00	02	97	15.7	80	18.2	9.7	8.2	13.4	13.5	13.8	14.0	13.9	15.0	10	0	tr	0.8	0	0	0	0	0	0	1017.5	0.0	0.0	1.9	Snow/sleet falling		
05	8	23	03	02	97	17.7	75	19.2	15.7	13.5	14.6	14.6	14.7	14.5	14.2	14.9	10	0	0.8	0.7	0	0	0	0	0	0	1008.5	1.8	0.0	1.3	0 0.1		
06	0	23	02	02	97	12.2	89	18.6	5.9	2.5	10.0	11.1	12.7	14.2	14.3	14.9	10	0	tr	8.9	0	0	0	0	0	0	1029.0	0.0	0.0	1.5	50% snow cover 09GMT		
07	7	23	02	02	97	14.6	93	19.4	10.7	3.5	11.6	12.2	13.0	14.0	14.1	14.9	10	0	1.9	5.6	0	0	0	0	0	0	1020.5	1.3	0.0	1.2	0 0.0		
08	0	00	00	02	97	10.7	98	16.4	5.5	1.9	9.7	10.6	12.4	13.9	14.0	14.8	10	0	0.0	8.1	0	0	0	0	0	0	1024.5	0.0	0.0	1.0	Hail or ice pellets		
09	0	13	02	02	97	10.2	97	18.1	2.6	0.0	8.2	8.9	11.0	13.1	13.6	14.8	10	0	2.9	7.3	0	0	0	0	0	0	1020.5	1.5	0.0	1.4	0 0.1		
10	7	23	05	21	97	11.3	91	15.6	8.5	2.5	11.1	11.2	11.9	12.8	13.2	14.6	10	0	0.0	6.8	0	0	0	0	0	0	1017.5	0.0	0.0	1.2	Thunder		
11	1	27	02	02	97	7.1	96	16.0	1.8	-0.8	7.3	8.3	10.2	12.5	13.1	14.4	10	0	0.0	8.4	0	0	0	0	0	0	1028.5	0.0	0.0	0.9	1 0.7		
12	7	13	02	02	97	8.5	96	17.1	3.3	0.1	8.1	8.4	9.9	11.9	12.5	14.3	10	0	2.2	3.2	0	0	0	0	0	0	1021.5	2.9	0.0	1.1	Gale		
13	8	00	00	42	05	12.4	95	16.4	8.5	5.0	11.7	11.9	12.1	12.4	12.6	14.1	10	0	tr	3.5	0	0	0	0	0	0	1016.0	0.0	0.0	0.6	0 0.0		
14	8	23	02	10	96	11.4	95	15.6	8.8	6.1	10.6	10.9	11.7	12.5	12.7	14.0	10	0	1.0	0.0	0	0	0	0	0	0	1011.0	1.0	0.0	0.2	Fog at 09GMT		
15	7	23	02	02	97	13.0	97	16.4	8.4	5.0	10.6	11.1	12.0	12.6	12.7	13.9	10	0	tr	5.4	0	0	0	0	0	0	1003.5	0.0	0.0	1.4	0 0.8		
16	1	23	02	02	97	11.7	88	16.7	7.9	3.5	9.9	10.6	11.6	12.5	12.6	13.8	10	0	8.5	6.4	0	0	0	0	0	0	1012.0	5.7	0.0	1.1	Air frost		
17	7	23	02	01	97	15.1	91	18.4	11.7	10.8	12.8	12.9	13.0	13.0	12.7	13.8	10	0	0.0	5.9	0	0	0	0	0	0	1015.0	0.0	0.0	1.0	0 0.8		
18	0	00	00	10	10	8.3	95	17.5	4.3	1.6	9.1	9.9	11.5	12.7	12.9	13.8	10	0	tr	7.6	0	0	0	0	0	0	1028.5	0.0	0.0	1.5	Ground frost		
19	7	09	05	02	97	14.0	84	17.9	8.3	10.0	10.7	10.8	11.7	12.4	12.6	13.8	10	0	1.4	5.0	0	0	0	0	0	0	1021.0	2.9	0.0	1.6	1 2.8		
20	8	18	02	60	96	15.3	92	16.1	14.0	10.8	13.2	12.1	13.0	13.0	12.7	13.7	10	0	2.4	2.1	0	0	0	0	0	0	1007.0	1.7	0.0	0.4	0.2mm precipitator		
21	8	13	02	10	94	15.3	95	18.6	8.7	5.1	12.2	12.2	12.5	13.0	13.0	13.8	20	0	8.0	1.0	0	0	0	0	0	0	1000.5	4.5	0.0	0.8	15 14.5		
22	7	18	05	02	97	12.2	93	17.7	10.5	6.5	12.0	12.0	13.0	13.4	13.3	13.9	20	0	7.2	2.5	0	0	0	0	0	0	1009.5	3.2	0.0	0.5	1.0mm precipitator		
23	7	09	02	63	96	15.0	92	18.0	13.2	12.0	13.5	13.5	14.0	13.6	13.5	14.0	20	0	23.1	4.0	0	0	0	1	0	0	1001.0	6.8	0.0	0.7	12 11.3		
24	7	23	02	02	97	12.9	92	17.5	11.9	8.7	12.8	13.0	13.5	13.7	13.6	13.9	20	0	tr	5.5	0	0	0	0	0	0	1002.5	0.0	0.0	0.8	5.0mm precipitator		
25	6	00	00	02	97	11.0	91	17.3	7.6	4.2	10.6	11.1	12.4	13.4	13.5	14.0	10	0	0.1	5.6	0	0	0	0	0	0	1012.5	0.1	0.0	1.2	5 4.7		
26	4	23	02	02	97	16.6	81	18.6	11.0	10.0	13.0	13.2	13.3	13.4	13.2	13.9	10	0	0.6	4.8	0	0	0	0	0	0	1008.0	1.1	0.0	1.4	No sunshine		
27	8	18	02	60	96	15.5	74	20.0	11.2	7.2	12.7	12.8	13.0	13.4	13.4	14.0	10	0	0.1	2.5	0	0	0	0	0	0	1013.0	0.1	0.0	1.0	1 5.9		
28	8	23	02	25	96	16.9	84	18.4	13.2	9.1	13.4	13.3	13.1	13.8	13.6	14.0	10	0	1.8	4.7	0	0	0	0	0	0	1013.0	2.4	0.0	1.1	The warmest October since		
29	6	09	02	02	97	14.3	93	20.8	11.0	6.7	12.7	13.1	13.2	13.6	13.6	14.0	20	0	0.9	3.5	0	0	0	0	0	0	1012.5	2.6	0.0	0.6	2011 with the 27th and 29th		
30	8	18	02	60	97	14.1	93	17.0	11.6	7.3	12.8	12.9	13.5	13.9	13.7	14.0	10	0	tr	0.9	0	0	0	0	0	0	1013.5	0.0	0.0	0.7	being unusually mild for late		
31	5	13	02	02	97	12.3	93	16.6	8.0	4.6	11.1	11.5	12.5	13.5	13.6	14.0	10	0	9.4	2.7	0	0	0	0	0	0	1014.5	6.8	0.0	1.0	October. But we had the first		
Monthly means						13.0	91	17.7	9.1	6.0	11.4	11.7	12.6	13.3	13.4	14.3											1014.7				October ground frost for 3		
Monthly totals																				72.4	136.4							46.5	0.0	32.8	years on the 11th. Rainfall		
Highest values						17.7		20.8	15.7	13.5	14.6	14.6	14.7	14.5	14.3	15.2			23.1	8.9								6.8	0.0	1.9	was average for the month,		
Lowest values						7.1	74	15.6	1.8	-0.8	7.3	8.3	9.9	11.9	12.5	13.7																	the final 11 days. Sunnier
1991-2020 monthly climatological average						88	15.5	8.0	5.5	10.6	10.9	11.9	12.7	13.0	13.7					72.4	108.4							1014.7	53.8	4.3	34.5	than normal and sunnier than	
																																September 2022; the	
																																	sunniest October for 4 years.
																																	Frequent winds from the SW.

Key  
 DD: date  
 07GMT observations  
 N cloud cover (oktas, 9=obscured)      dd wind direction (degrees/10)  
 ff wind speed (knots)  
 ww present weather code  
 2 sky not changing      25 recent rain shower  
 3 cloud increasing      45 fog  
 10 mist      58 slight rain and drizzle  
 11 shallow fog      60 intermittent slight rain  
 21 recent rain      61 continuous slight rain  
 VV visibility (00-50 metres/100, 94 very poor, 95 poor, 96 moderate, 97 good)  
 Soil temperatures are for 0700GMT beneath bare soil (5, 10, 20cm) or grass (30, 50, 100cm)

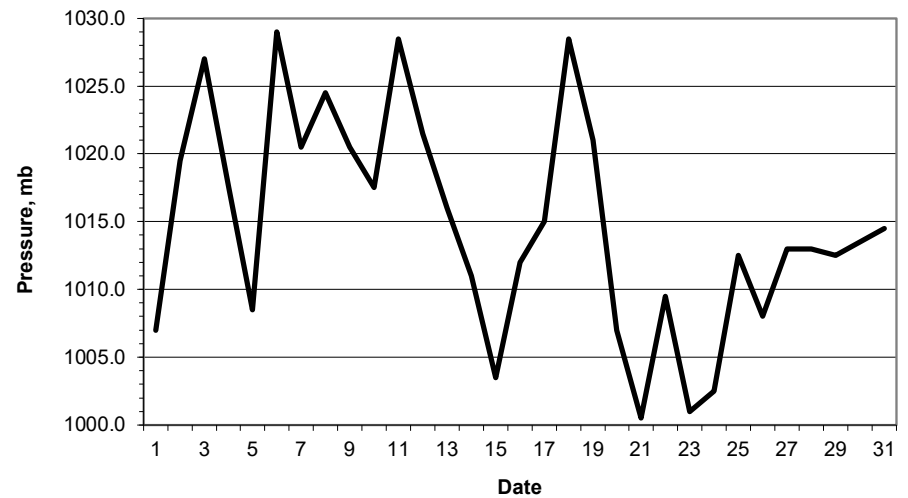
09GMT observations  
 Temp temperature (degC)      RH relative humidity (%)  
 E state of ground (00 dry, 10 moist, 20 wet, 90 cracked)      SS snow depth (cm)  
 Press air pressure (mb)  
 24 hour readings  
 Max maximum temperature (degC) beginning 09GMT      Min minimum temperature (degC) ending 09GMT  
 Gmin grass minimum temperature (degC) ending 09GMT      Rain precipitation beginning 09GMT  
 Sun sunshine (hours) sunrise-sunset      Rain hrs hours of rainfall (>0.1mm/h) 09-09GMT  
 Fr. Hrs hours of air frost (00-24GMT)      Pch Evap Piche evaporation (ml) beginning 09GMT

Days with  
 S snow(5) or sleet(1) falling      L 50% snow cover at 09GMT      H hail or ice pellets  
 T thunder heard      G gale      F fog at 09GMT

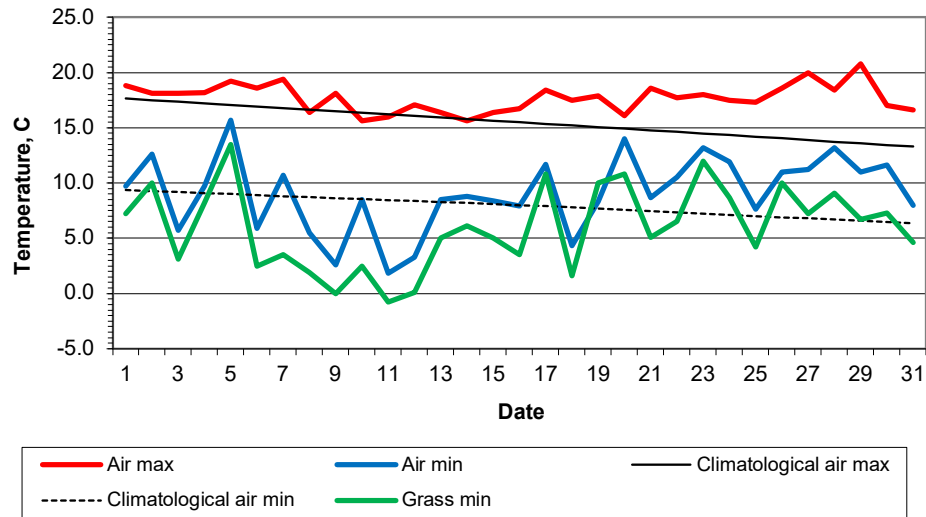
**Daily soil temperatures, 0700GMT**



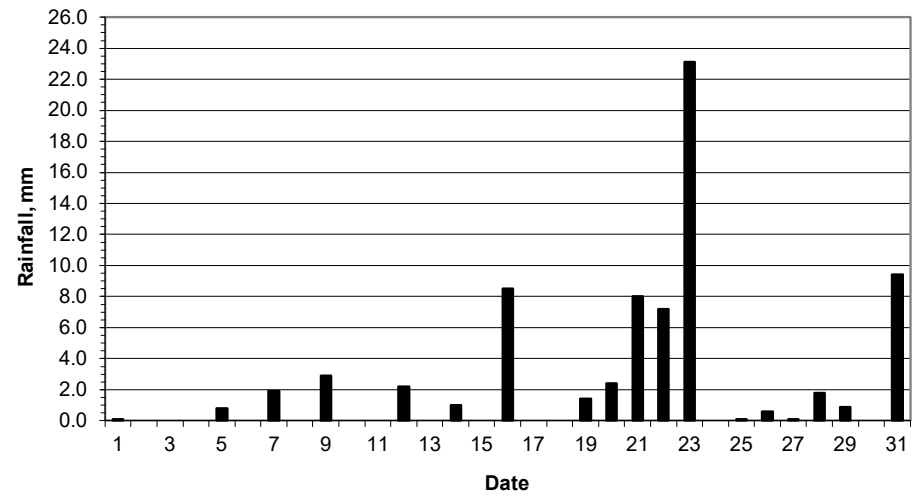
**Mean sea level pressure, 0900GMT**



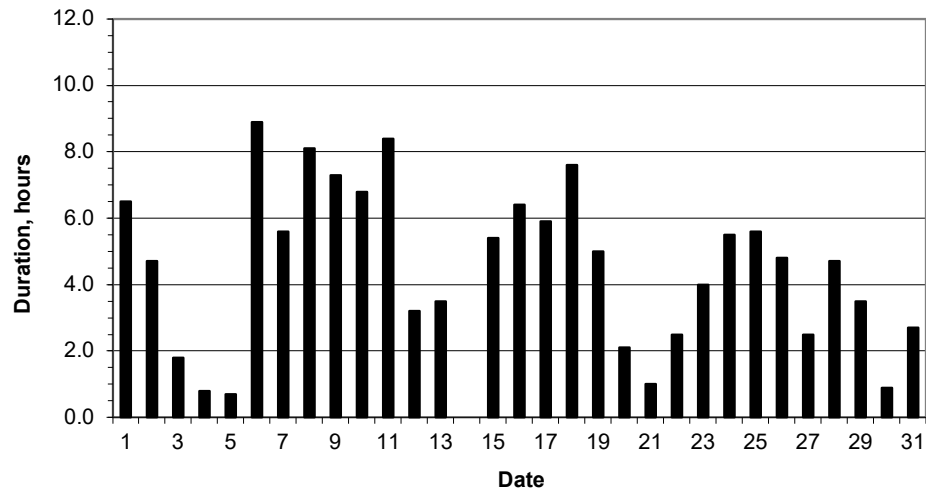
### Daily temperature extremes



### Daily rainfall



### Daily sunshine



### Daily evaporation

