

MAIDENHEAD METEOROLOGICAL OBSERVATIONS FOR OCTOBER 2017

		0900GMT					Temperature			Soil temperatures (depth in cm)																			Rain	Fr.	Pch																
DD	N	dd	ff	ww	VV	Temp	RH	Max	Min	Gmin	5	10	20	30	50	100	E	SS	Rain	Sun	S	L	H	T	G	F	Press	hrs	hrs	Evap																	
01	8	22	02	02	97	15.8	93	17.9	11.8	8.6	14.9	15.0	15.2	15.3	15.0	15.0	10	0	0.1	0.0	0	0	0	0	0	0	1011.0	0.2	0.0	1.0	Number of																
02	2	27	05	02	97	15.5	68	18.3	13.4	10.9	11.4	14.4	15.1	15.4	15.0	15.0	10	0	tr	4.1	0	0	0	0	0	0	1013.5	0.0	0.0	2.2	days with																
03	0	31	05	02	97	13.3	72	17.8	8.3	6.2	11.6	12.2	13.9	14.9	14.9	15.0	10	0	0.0	8.1	0	0	0	0	0	0	1023.0	0.0	0.0	1.5	2017	normal															
04	7	22	02	02	97	11.5	80	16.4	7.6	5.5	11.4	11.7	13.3	14.3	14.5	15.0	10	0	0.0	1.0	0	0	0	0	0	0	1023.5	0.0	0.0	2.2	Snow/sleet falling																
05	8	31	19	02	97	14.3	63	17.2	11.5	8.0	13.8	13.8	14.0	14.1	14.2	14.9	10	0	tr	8.4	0	0	0	0	0	0	1017.5	0.0	0.0	2.5	0	0.1															
06	2	36	05	21	97	12.2	70	16.1	7.2	4.2	11.5	11.5	13.5	13.8	14.0	14.8	10	0	tr	7.0	0	0	0	0	0	0	1027.0	0.0	0.0	2.0	50% snow cover 09GMT																
07	8	27	05	03	97	14.1	81	17.2	8.7	7.0	13.0	12.5	13.0	13.7	13.9	14.6	10	0	0.6	0.0	0	0	0	0	0	0	1018.0	1.0	0.0	1.3	0	0.0															
08	6	31	02	01	97	12.7	90	16.3	9.3	4.6	12.5	12.5	13.0	13.7	13.7	14.4	10	0	tr	2.0	0	0	0	0	0	0	1021.0	0.0	0.0	0.8	Hail or ice pellets																
09	8	27	02	02	97	13.7	86	16.7	9.7	6.2	12.3	12.4	13.2	13.6	13.6	14.4	10	0	0.2	7.0	0	0	0	0	0	0	1020.0	0.5	0.0	1.2	0	0.2															
10	8	27	05	02	97	14.0	85	16.9	9.8	6.8	13.7	12.8	13.4	13.8	13.6	14.3	10	0	0.2	0.2	0	0	0	0	0	0	1016.0	0.4	0.0	1.2	Thunder																
11	8	22	05	02	97	15.0	76	17.0	13.0	12.0	14.0	14.0	14.1	14.0	13.7	14.3	10	0	0.9	0.5	0	0	0	0	0	0	1012.0	1.2	0.0	1.4	0	0.6															
12	7	22	02	02	97	13.0	84	18.0	7.8	4.4	11.7	11.8	13.0	13.9	13.8	14.3	10	0	tr	7.0	0	0	0	0	0	0	1020.5	0.0	0.0	0.9	Gale																
13	8	22	02	02	97	15.6	88	18.9	9.3	5.4	13.2	12.9	13.2	13.7	13.7	14.3	10	0	0.0	0.3	0	0	0	0	0	0	1022.0	0.0	0.0	1.1	0	0.1															
14	8	22	05	02	97	16.6	81	19.6	15.6	12.0	14.8	13.4	14.5	14.2	13.8	14.2	10	0	0.0	0.1	0	0	0	0	0	0	1024.5	0.0	0.0	0.8	Fog at 09GMT																
15	8	22	02	02	97	13.5	67	19.4	12.3	9.4	13.6	13.8	14.5	14.5	14.1	14.3	10	0	0.0	3.5	0	0	0	0	0	0	1018.0	0.0	0.0	0.9	0	0.8															
16	3	18	02	02	96	16.8	94	21.5	10.7	9.0	12.9	13.2	13.9	14.3	14.1	14.3	10	0	0.0	1.7	0	0	0	0	0	0	1014.5	0.0	0.0	2.1	Air frost																
17	4	27	02	02	97	11.8	74	14.0	9.3	5.4	11.2	11.7	13.2	14.0	14.1	14.4	10	0	0.6	1.3	0	0	0	0	0	0	1020.5	3.4	0.0	0.7	0	1.0															
18	8	04	02	21	96	11.4	85	15.4	10.7	8.1	12.4	12.6	13.1	13.7	13.7	14.4	10	0	0.2	0.0	0	0	0	0	0	0	1012.5	0.4	0.0	0.2	Ground frost																
19	8	09	02	10	95	15.4	93	16.8	11.4	10.0	11.1	11.1	13.8	13.8	13.6	14.3	10	0	4.0	0.0	0	0	0	0	0	0	1005.0	5.7	0.0	0.6	1	3.6															
20	8	27	09	02	97	12.6	82	15.3	12.2	10.4	13.3	13.2	13.8	14.0	13.8	14.2	10	0	3.0	2.1	0	0	0	0	0	0	1005.0	2.4	0.0	1.5	0.2mm precipitation																
21	7	27	09	03	97	13.6	75	15.7	12.2	10.0	12.4	12.5	13.5	13.6	13.7	14.2	10	0	0.7	4.8	0	0	0	0	0	0	1002.5	0.5	0.0	2.0	11	14.3															
22	7	27	09	03	97	11.3	63	14.0	9.0	5.1	10.0	10.2	13.0	13.3	13.4	14.1	10	0	0.8	3.3	0	0	0	0	0	0	1013.0	1.0	0.0	1.1	1.0mm precipitation																
23	8	22	02	02	97	12.9	91	16.8	10.0	8.0	11.1	11.1	12.0	12.8	13.1	14.1	10	0	0.7	0.0	0	0	0	0	0	0	1018.5	1.2	0.0	0.3	2	11.4															
24	8	22	05	02	97	16.8	88	19.0	12.9	11.0	13.6	13.4	13.5	13.2	13.1	14.0	10	0	0.1	1.2	0	0	0	0	0	0	1018.0	0.1	0.0	1.2	5.0mm precipitation																
25	7	27	02	25	97	15.3	87	19.2	14.3	12.0	13.9	13.9	14.0	13.9	13.5	13.9	10	0	tr	6.7	0	0	0	0	0	0	1020.5	0.0	0.0	0.8	0	4.7															
26	8	13	02	50	09	11.4	93	18.0	8.1	5.2	11.9	12.2	13.0	13.5	13.6	14.0	10	0	0.1	0.0	0	0	0	0	0	0	1025.0	0.2	0.0	0.4	No sunshine																
27	0	00	00	02	97	10.2	90	15.6	8.0	4.8	11.0	11.6	13.0	13.6	13.5	14.0	10	0	0.0	6.9	0	0	0	0	0	0	1035.0	0.0	0.0	0.7	6	6.2															
28	7	27	02	03	97	7.3	93	15.8	3.7	0.5	8.8	8.9	10.8	12.5	13.0	13.9	10	0	0.1	4.5	0	0	0	0	0	0	1028.5	0.3	0.0	1.2	A mild and very dry month,																
29	6	36	09	21	97	13.3	72	13.8	7.3	6.0	12.2	12.2	12.4	12.5	12.6	13.8	10	0	0.0	3.6	0	0	0	0	0	0	1022.5	0.0	0.0	1.4	with less sunshine than																
30	4	27	02	02	97	7.0	86	12.0	0.5	-1.5	7.0	7.6	10.0	11.9	12.5	13.6	10	0	0.0	6.5	0	0	0	0	0	0	1032.5	0.0	0.0	0.8	normal. Despite the mean																
31	7	22	02	02	97	9.5	80	13.2	4.5	4.0	8.6	8.5	9.6	11.0	11.8	13.5	10	0	0.0	0.2	0	0	0	0	0	0	1027.5	0.0	0.0	0.5	temperature being 1.7 degC																
Monthly means						13.1	82	16.8	9.7	7.1	12.1	12.2	13.2	13.7	13.7	14.3													1019.0																		
Monthly totals																		12.3	92.0													18.5	0.0	36.5													
Highest values						16.8	21.5	15.6	12.0	14.9	15.0	15.2	15.4	15.0	15.0													4.0	8.4													5.7	0.0	2.5			
Lowest values						7.0	63	12.0	0.5	-1.5	7.0	7.6	9.6	11.0	11.8	13.5																															
1981-2010 monthly climatological averages						88	15.2	7.8	5.3	10.3	10.7	11.7	12.5	12.8	13.6													73.8	104.1													1014.5	51.7	4.3	34.9		

above average, there have been few colder Octobers in the past 10 years. Just 12.3 mm of rain made it the driest October since 1978 (when 1.0 mm fell locally). Nights became suddenly colder after the 27th.

Key

DD: date

07GMT observations

- N cloud cover (oktas, 9=obscured)
- ff wind speed (knots)
- ww present weather code
 - 2 sky not changing
 - 3 cloud increasing
 - 10 mist
 - 11 shallow fog
 - 21 recent rain
- VV visibility (00-50 metres/100, 94 very poor, 95 poor, 96 moderate, 97 good)
- Soil temperatures are for 0700GMT beneath bare soil (5, 10, 20cm) or grass (30, 50, 100cm)
- dd wind direction (degrees/10)
- 25 recent rain shower
- 45 fog
- 58 slight rain and drizzle
- 60 intermittent slight rain
- 61 continuous slight rain

09GMT observations

- Temp temperature (degC)
- E state of ground (00 dry, 10 moist, 20 wet, 90 cracked)
- Press air pressure (mb)
- RH relative humidity (%)
- SS snow depth (cm)

24 hour readings

- Max maximum temperature (degC) beginning 09GMT
- Gmin grass minimum temperature (degC) ending 09GMT
- Sun sunshine (hours) sunrise-sunset
- Fr. Hrs hours of air frost (00-24GMT)
- Min minimum temperature (degC) ending 09GMT
- Rain precipitation beginning 09GMT
- Rain hrs hours of rainfall (>0.1mm/h) 09-09GMT
- Pch Evap Piche evaporation (ml) beginning 09GMT

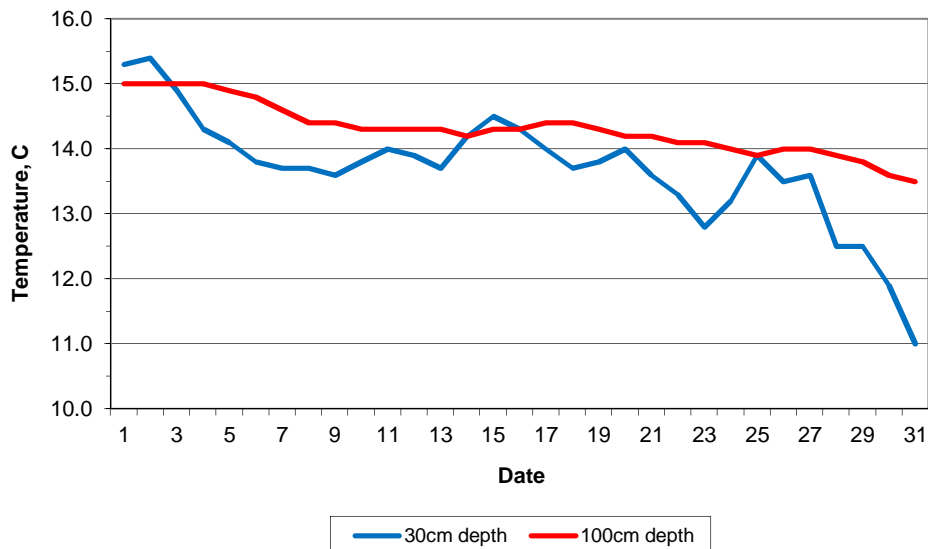
Days with

- S snow(5) or sleet(1) falling
- T thunder heard
- L 50% snow cover at 09GMT
- G gale
- H hail or ice pellets
- F fog at 09GMT

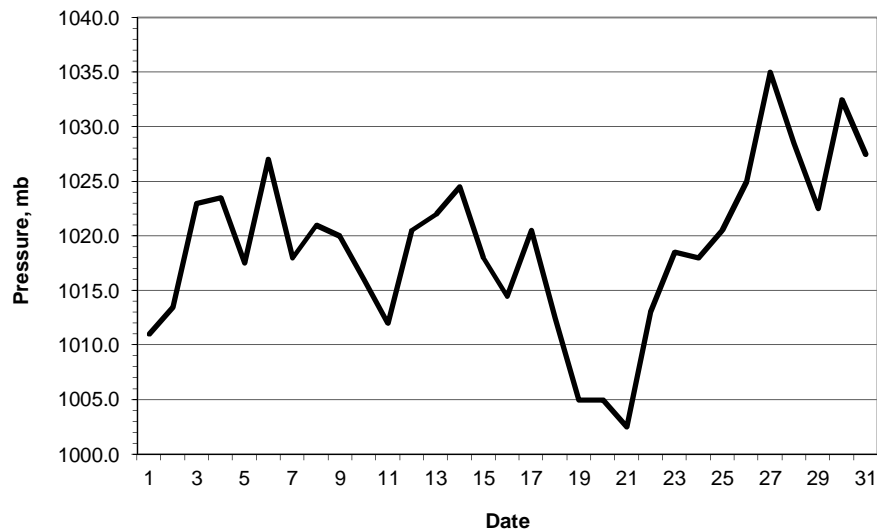
This information (and data for earlier months) is also available at

<http://www.met.reading.ac.uk/~brugge>

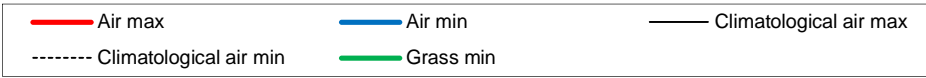
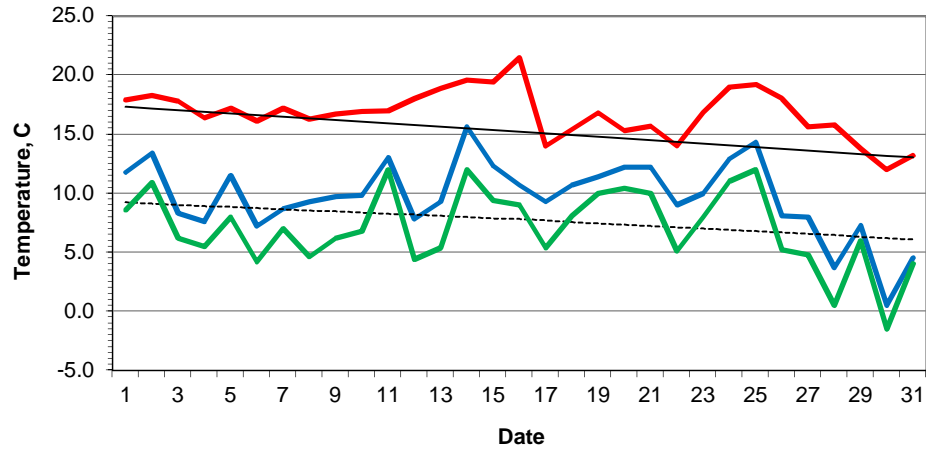
Daily soil temperatures, 0700GMT



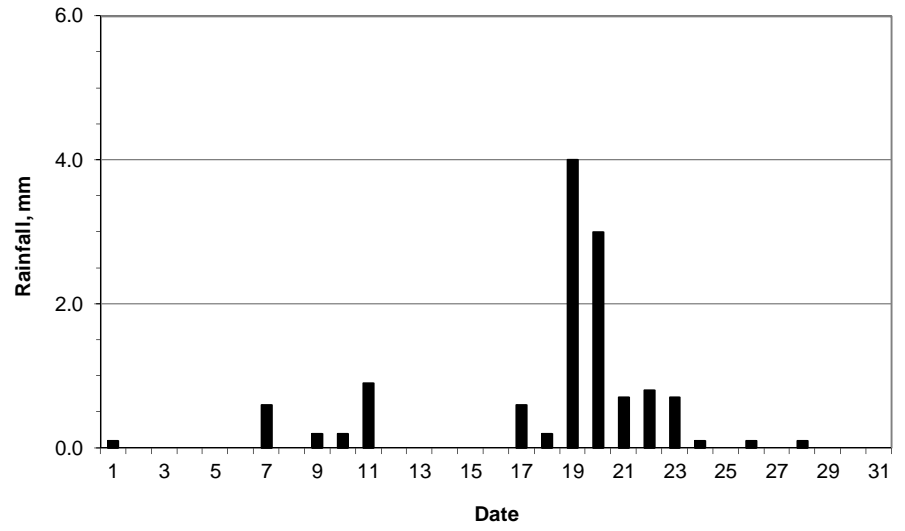
Mean sea level pressure, 0900GMT



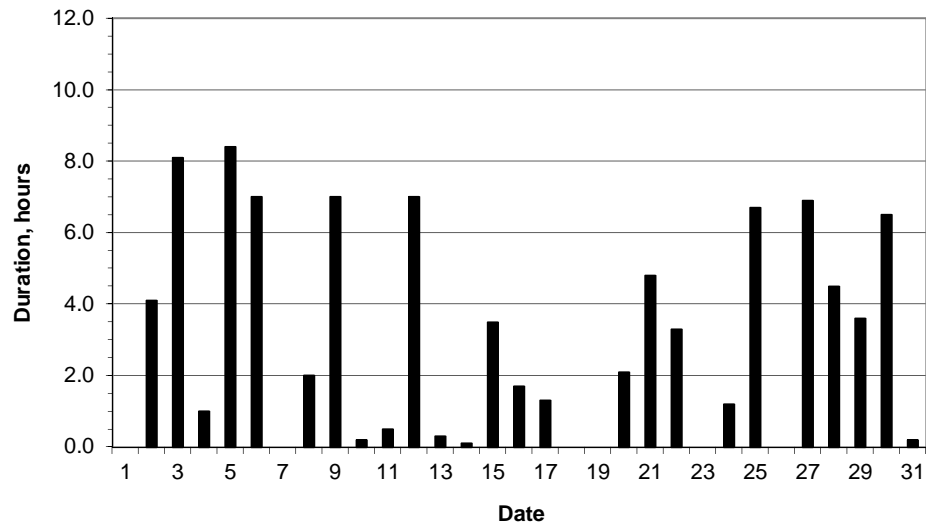
Daily temperature extremes



Daily rainfall



Daily sunshine



Daily evaporation

