

MAIDENHEAD METEOROLOGICAL OBSERVATIONS FOR NOVEMBER 2022

DD	N	dd	ff	ww	VV	0900GMT Temp	RH	Temperature Max	Min	Gmin	Soil temperatures (depth in cm)					E	SS	Rain	Sun	S	L	H	T	G	F	Press	Rain hrs	Fr. hrs	Pch Evap		
											5	10	20	30	50	100															
01	7	23	05	80	97	13.9	86	15.8	11.2	8.5	12.2	12.3	13.0	13.5	13.6	14.0	20	0	3.0	4.1	0	0	0	0	0	0	1005.5	2.8	0.0	1.0	Number of
02	1	23	02	02	97	8.4	92	14.7	5.5	2.3	9.2	9.9	10.5	12.8	13.2	14.0	20	0	28.5	3.1	0	0	0	0	0	0	1016.5	10.5	0.0	1.2	days with
03	8	23	02	21	97	10.3	92	11.5	8.4	7.9	11.3	11.6	12.0	12.6	12.7	13.9	20	0	1.5	0.5	0	0	0	0	0	0	1001.0	1.8	0.0	0.2	2022 normal
04	0	31	05	02	97	6.9	93	12.3	6.0	3.9	8.7	9.4	10.9	12.1	12.5	13.6	20	0	0.6	5.7	0	0	0	0	0	0	1011.5	0.6	0.0	0.7	Snow/sleet falling
05	8	18	02	60	96	7.8	94	14.0	4.0	0.7	8.6	8.8	9.9	11.2	11.9	13.6	10	0	10.0	0.0	0	0	0	0	0	0	1015.0	12.2	0.0	0.3	0 0.3
06	8	18	02	21	96	12.2	93	14.2	7.8	8.3	11.6	11.7	11.8	11.8	11.7	13.3	20	0	1.6	1.2	0	0	0	0	0	0	1003.0	1.1	0.0	0.3	50% snow cover 09GMT
07	8	23	02	02	97	13.5	88	14.9	10.0	5.6	10.6	10.6	11.2	11.8	12.0	13.1	20	0	4.7	0.0	0	0	0	0	0	0	1004.0	4.8	0.0	1.1	0 0.0
08	7	23	09	02	97	12.7	82	14.8	12.2	9.8	11.3	11.6	12.0	12.1	12.1	13.1	20	0	4.1	2.4	0	0	0	0	0	0	997.0	2.2	0.0	1.1	Hail or ice pellets
09	6	23	05	01	97	10.4	90	14.1	10.0	5.5	10.1	10.5	11.2	11.9	12.1	13.1	20	0	tr	5.6	0	0	0	0	0	0	1004.5	0.0	0.0	0.7	1 0.2
10	8	23	02	02	97	12.7	86	15.4	8.3	4.2	10.1	10.2	10.6	11.6	11.7	13.1	20	0	tr	0.0	0	0	0	0	0	0	1019.5	0.0	0.0	1.7	Thunder
11	8	23	05	02	97	15.1	76	16.0	12.7	11.8	12.3	12.3	12.1	12.1	11.9	13.0	10	0	0.0	0.7	0	0	0	0	0	0	1025.1	0.0	0.0	0.8	0 0.2
12	8	05	02	10	96	11.6	91	16.3	9.2	4.8	11.1	11.2	11.9	12.2	12.2	13.0	10	0	0.0	2.3	0	0	0	0	0	0	1028.0	0.0	0.0	0.4	Gale
13	8	13	02	10	96	11.6	93	13.7	11.5	7.0	11.8	11.9	12.1	12.2	12.1	13.0	10	0	tr	3.8	0	0	0	0	0	0	1021.0	0.0	0.0	0.4	0 0.0
14	9	00	00	45	03	10.5	95	13.8	9.3	6.8	11.1	11.3	11.8	12.3	12.2	13.0	10	0	5.3	0.2	0	0	0	0	1	1010.0	1.8	0.0	0.2	Fog at 09GMT	
15	8	18	05	61	96	11.8	92	14.0	8.0	4.5	10.9	11.1	11.7	12.1	12.1	13.0	20	0	13.3	0.9	0	0	0	0	0	0	995.0	5.0	0.0	0.3	1 1.3
16	7	18	02	80	96	8.5	93	12.2	7.3	3.5	9.5	9.9	10.7	11.7	12.0	13.0	20	0	13.8	3.4	0	0	0	0	0	0	991.0	9.0	0.0	0.4	Air frost
17	8	27	13	02	97	8.7	93	11.4	8.5	6.0	9.7	10.0	10.6	11.4	11.6	12.9	20	0	0.1	1.7	0	0	0	0	0	0	984.5	0.1	0.0	1.0	0 4.3
18	2	23	05	02	97	7.0	87	11.7	6.4	2.8	7.8	8.3	9.7	11.0	11.3	12.7	20	0	0.0	4.3	0	0	0	0	0	0	1000.0	0.0	0.0	1.0	Ground frost
19	7	31	05	02	97	8.0	80	10.6	6.5	3.5	8.7	8.9	9.7	10.5	11.0	12.5	10	0	4.7	1.6	0	0	0	0	0	0	1013.5	4.8	0.0	0.6	5 9.7
20	7	00	00	10	10	6.5	93	10.4	3.1	-0.9	7.7	7.9	9.0	10.1	10.7	12.5	20	0	0.0	3.9	0	0	0	0	0	0	1008.0	0.0	0.0	0.7	0.2mm precipitation
21	8	09	02	03	96	6.1	93	8.7	3.0	-0.6	6.6	6.9	8.1	9.6	10.3	12.2	10	0	9.2	0.0	0	0	0	0	0	0	997.0	6.8	0.0	0.5	18 16.1
22	3	23	05	01	97	4.7	91	10.0	4.3	1.0	6.2	6.6	7.9	9.1	9.8	12.0	20	0	3.9	4.9	0	0	0	0	0	0	987.5	1.9	0.0	0.9	1.0mm precipitation
23	8	18	05	61	96	10.0	93	11.7	0.4	-1.3	6.1	6.1	8.1	8.5	9.4	11.8	20	0	2.4	4.8	0	0	5	0	0	0	986.5	0.9	0.0	0.5	16 11.7
24	7	18	02	02	97	3.8	91	13.0	2.9	-1.0	5.4	5.6	7.3	8.6	9.2	11.5	20	0	5.3	0.9	0	0	0	0	0	0	1004.0	2.3	0.0	1.2	5.0mm precipitation
25	0	23	02	02	97	4.4	89	11.5	3.8	-0.1	6.1	6.3	7.6	8.7	9.1	11.3	20	0	0.0	6.6	0	0	0	0	0	0	1014.0	0.0	0.0	0.6	8 5.5
26	8	18	05	02	97	8.8	94	12.5	4.3	0.1	6.6	6.6	7.4	8.4	9.0	11.1	10	0	5.1	0.5	0	0	0	0	0	0	1024.5	6.5	0.0	0.7	No sunshine
27	8	18	02	01	96	10.1	91	12.8	8.8	5.1	9.5	9.5	9.4	9.1	9.1	11.0	20	0	0.2	0.0	0	0	0	0	0	0	1014.0	0.1	0.0	0.1	6 9.3
28	8	00	00	10	96	4.3	95	10.3	3.0	0.0	6.6	7.0	8.4	9.4	9.5	11.0	10	0	0.1	2.2	0	0	0	0	0	0	1008.0	0.0	0.0	0.3	A mild and wet month, the
29	8	00	00	10	96	5.9	95	7.1	3.8	0.0	7.3	7.3	8.0	9.0	9.2	11.0	10	0	tr	0.0	0	0	0	0	0	0	1020.5	0.0	0.0	0.2	wettest month of any since
30	8	09	02	10	94	7.1	93	9.4	5.8	4.6	7.6	7.6	8.3	9.0	9.2	10.9	10	0	tr	1.6	0	0	0	0	0	0	1025.0	0.0	0.0	0.3	November 2020. 29.5 mm
Monthly means						9.1	90	12.6	6.9	3.8	9.1	9.3	10.1	10.9	11.1	12.6										1007.8				wettest November day since	
Monthly totals																			117.4	66.9						75.2	0.0	19.4	almost three-quarters of the		
Highest values						15.1		16.3	12.7	11.8	12.3	12.3	13.0	13.5	13.6	14.0			28.5	6.6						12.2	0.0	1.7	total rainfall. The warmest		
Lowest values						3.8	76	7.1	0.4	-1.3	5.4	5.6	7.3	8.4	9.0	10.9														November since 2015 and	
1991-2020 monthly climatological averages						91	11.1	4.7	2.1	7.3	7.4	8.3	9.2	9.6	11.0			74.4	65.4								1013.9	62.7	22.8	21.7	the first without an air frost
																														since 2009. Despite the	
																														generally low pressure, it	
																														was not windy month.	

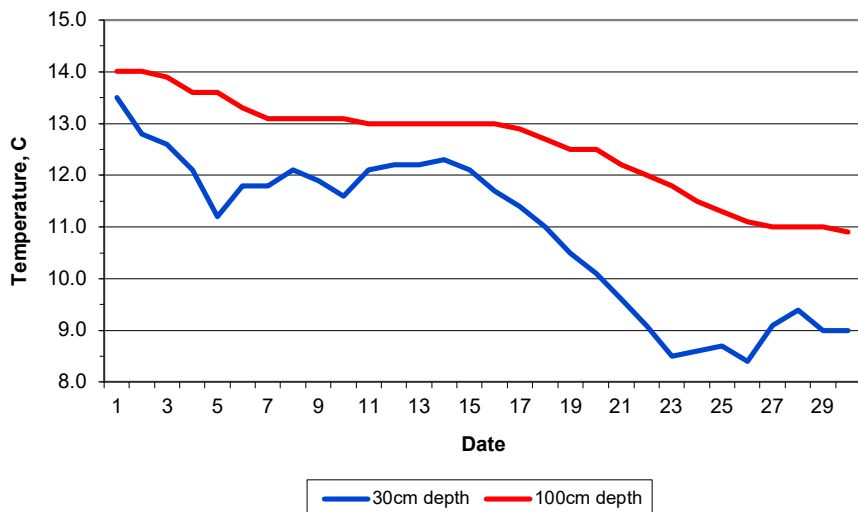
Key
 DD: date
 07GMT observations
 N cloud cover (oktas, 9=obscured) dd wind direction (degrees/10)
 ff wind speed (knots)
 ww present weather code
 1 cloud decreasing 45 fog
 2 sky not changing 50 intermittent light drizzle
 3 cloud increasing 60 intermittent slight rain
 10 mist 61 continuous slight rain
 21 recent rain
 VV visibility (00-50 metres/100, 94 very poor, 95 poor, 96 moderate, 97 good)
 Soil temperatures are for 0700GMT beneath bare soil (5, 10, 20cm) or grass (30, 50, 100cm)

09GMT observations
 Temp temperature (degC) RH relative humidity (%)
 E state of ground (00 dry, 10 moist, 20 wet, 40 frozen) SS snow depth (cm)
 Press air pressure (mb)

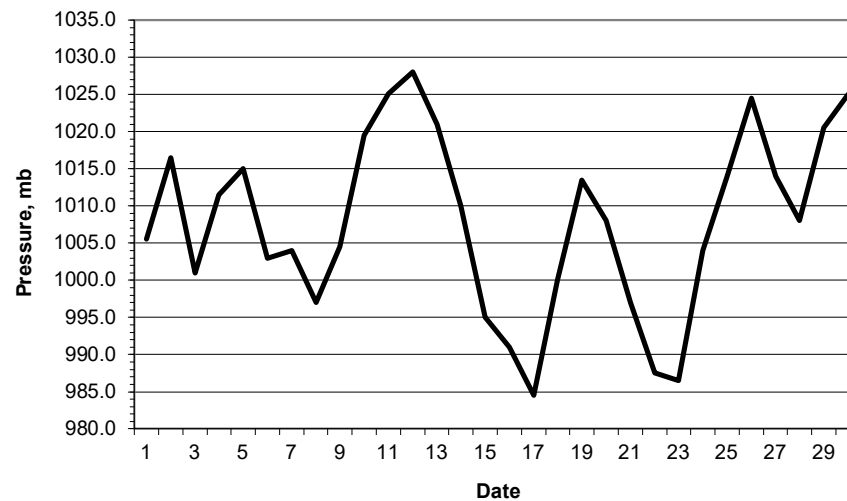
24 hour readings
 Max maximum temperature (degC) beginning 09GMT Min minimum temperature (degC) ending 09GMT
 Gmin grass minimum temperature (degC) ending 09GMT Rain precipitation beginning 09GMT
 Sun sunshine (hours) sunrise-sunset Rain hrs hours of rainfall (>0.1mm/h) 09-09GMT
 Fr. Hrs hours of air frost (00-24GMT) Pch Evap Piche evaporation (ml) beginning 09GMT

Days with
 S snow(5) or sleet(1) falling L 50% snow cover at 09GMT H hail or ice pellets
 T thunder heard G gale F fog at 09GMT

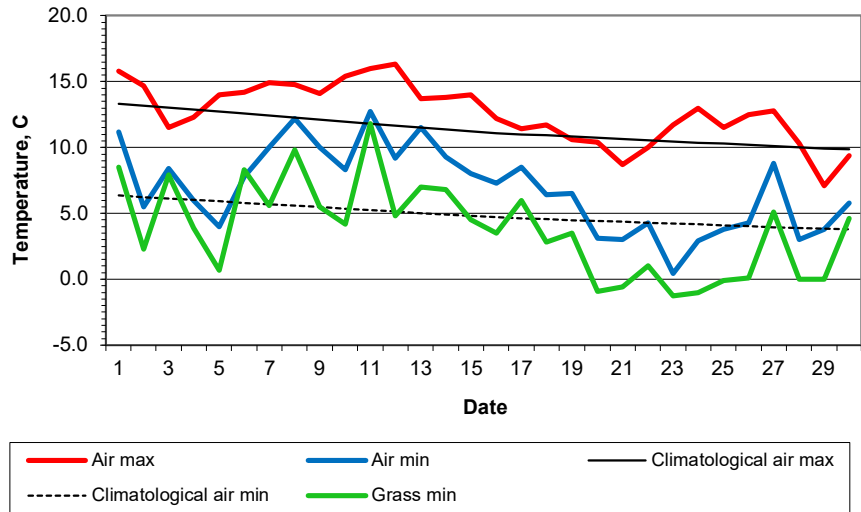
Daily soil temperatures, 0700GMT



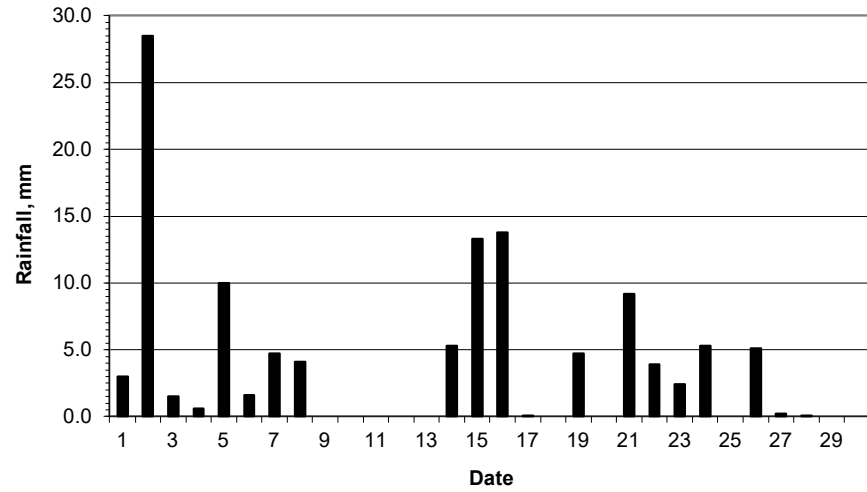
Mean sea level pressure, 0900GMT



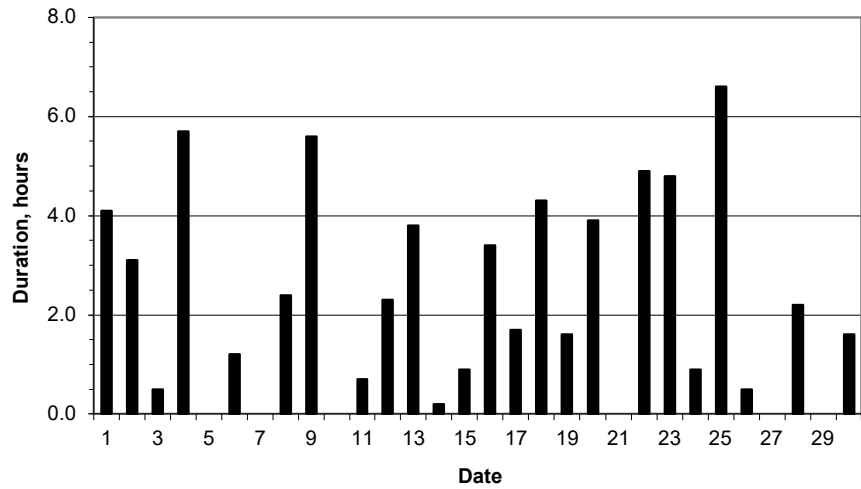
Daily temperature extremes



Daily rainfall



Daily sunshine



Daily evaporation

