

MAIDENHEAD METEOROLOGICAL OBSERVATIONS FOR MAY 2022

DD	N	dd	ff	ww	VV	0900GMT		Temperature				Soil temperatures (depth in cm)						E	SS	Rain	Sun	S	L	H	T	G	F	Press	Rain hrs	Fr. hrs	Pch Evap			
						Temp	RH	Max	Min	Gmin	5	10	20	30	50	100																		
01	8	23	02	02	97	13.3	63	14.5	9.8	6.5	11.6	11.6	11.9	11.6	11.1	10.7	90	0	0.3	0.0	0	0	0	0	0	0	1024.5	1.3	0.0	1.1	Number of			
02	8	00	00	02	96	11.6	87	17.2	9.4	8.9	11.6	11.6	11.9	11.8	11.2	10.7	10	0	0.0	1.0	0	0	0	0	0	1021.5	0.0	0.0	1.4	days with				
03	8	09	02	02	96	11.2	86	16.7	10.8	7.6	11.6	11.7	12.1	11.9	11.4	10.9	90	0	0.0	0.5	0	0	0	0	0	1022.0	0.0	0.0	1.2	2022 normal				
04	8	27	02	05	95	13.8	81	18.9	10.7	8.8	12.3	12.3	12.4	12.1	11.5	10.9	90	0	2.4	2.9	0	0	0	0	0	1019.5	1.3	0.0	1.0	Snow/sleet falling				
05	3	31	02	02	97	13.3	77	20.5	6.2	2.2	10.1	10.3	11.5	12.2	11.7	11.0	10	0	0.0	11.6	0	0	0	0	0	1024.5	0.0	0.0	1.8	0 0.0				
06	7	27	02	02	97	15.4	73	22.9	8.5	4.2	11.4	11.4	12.5	12.6	12.0	11.1	90	0	0.5	6.9	0	0	0	0	0	1026.0	1.1	0.0	2.2	50% snow cover 09GMT				
07	7	36	05	02	97	15.8	84	20.3	12.8	10.1	14.3	14.0	14.0	13.5	12.5	11.2	90	0	tr	3.0	0	0	0	0	0	1025.5	0.0	0.0	2.0	0 0.0				
08	7	09	02	02	97	13.9	73	20.7	9.5	5.1	12.8	13.1	13.5	13.5	12.7	11.5	90	0	0.0	9.6	0	0	0	0	0	1029.5	0.0	0.0	2.8	Hail or ice pellets				
09	3	09	05	02	97	16.6	53	22.7	5.8	2.9	11.6	11.9	13.1	13.7	13.0	11.6	90	0	0.3	8.3	0	0	0	0	0	1024.0	0.5	0.0	3.2	0 0.5				
10	8	23	05	02	97	14.6	91	20.1	13.4	9.1	14.5	14.6	14.9	14.1	13.1	11.8	10	0	0.4	4.1	0	0	0	0	0	1015.0	0.7	0.0	1.9	Thunder				
11	8	23	09	02	97	13.2	82	15.7	12.1	11.0	13.9	13.9	14.2	14.0	13.2	12.0	10	0	4.3	1.0	0	0	0	0	0	1009.5	5.2	0.0	0.8	1 1.5				
12	2	23	23	02	97	15.5	71	18.6	5.9	3.0	10.3	10.9	12.2	13.4	13.0	12.1	10	0	0.0	9.0	0	0	0	0	0	1019.5	0.0	0.0	2.2	Gale				
13	8	27	27	05	97	13.3	78	20.9	9.3	6.8	12.8	12.8	13.2	13.5	13.0	12.1	03	0	0.0	7.8	0	0	0	0	0	1020.5	0.0	0.0	2.5	0 0.0				
14	3	27	27	02	97	16.2	70	22.9	6.6	3.1	12.0	12.2	13.1	13.5	13.1	12.1	90	0	2.0	12.4	0	0	0	0	0	1022.0	3.2	0.0	2.8	Fog at 09GMT				
15	7	09	09	05	97	16.6	80	18.5	12.9	10.0	14.1	14.4	14.2	14.3	13.5	12.2	10	0	8.5	0.6	0	0	0	0	0	1015.0	6.7	0.0	1.0	0 0.0				
16	7	23	23	05	97	16.6	90	22.2	13.6	10.5	14.8	14.6	14.5	14.1	13.5	12.4	10	0	0.1	5.6	0	0	0	0	0	1013.5	0.1	0.0	1.7	Air frost				
17	5	13	13	02	97	18.8	82	25.7	10.2	7.2	14.2	14.2	14.5	14.6	13.8	12.5	10	0	0.6	7.6	0	0	0	0	0	1018.5	0.2	0.0	3.0	0 0.1				
18	8	23	23	02	97	16.1	82	22.7	9.7	6.1	14.1	14.5	15.2	15.2	14.3	12.6	10	0	3.0	6.2	0	0	0	1	0	1021.0	0.4	0.0	2.9	Ground frost				
19	8	27	27	02	96	16.3	89	22.9	13.3	11.8	15.6	15.6	16.1	15.7	14.6	12.8	10	0	0.1	8.8	0	0	0	0	0	1018.5	0.1	0.0	2.5	0 1.3				
20	8	23	23	02	96	14.0	78	18.7	12.3	10.5	15.3	15.5	16.0	16.0	14.9	13.0	10	0	1.7	3.9	0	0	0	0	0	1018.5	3.1	0.0	1.4	0.2mm precipitation				
21	6	27	27	02	97	16.1	71	20.5	8.3	5.2	13.6	13.9	14.2	15.1	14.8	13.2	10	0	0.0	8.4	0	0	0	0	0	1022.0	0.0	0.0	2.0	16 11.6				
22	2	00	00	00	97	18.8	63	24.1	8.3	5.6	13.1	13.1	14.3	14.9	14.4	13.2	10	0	0.0	9.8	0	0	0	0	0	1015.0	0.0	0.0	2.9	1.0mm precipitation				
23	7	27	27	02	97	17.0	73	19.4	9.5	6.5	14.8	14.8	15.5	15.6	14.8	13.2	03	0	6.6	1.0	0	0	0	0	0	1002.0	7.2	0.0	1.4	10 8.7				
24	7	27	27	02	97	14.0	86	19.5	10.1	9.1	14.2	14.2	14.7	15.1	14.6	13.4	10	0	1.6	8.7	0	0	0	0	0	1005.5	0.2	0.0	1.7	5.0mm precipitation				
25	8	23	05	02	97	13.4	78	18.5	7.9	4.8	13.4	13.8	14.2	15.0	14.6	13.4	10	0	0.7	3.2	0	0	0	0	0	1013.0	0.3	0.0	1.4	3 3.4				
26	7	27	05	03	97	16.1	78	20.0	10.0	6.6	13.6	13.4	13.9	14.5	14.2	13.4	10	0	0.0	3.5	0	0	0	0	0	1022.5	0.0	0.0	1.9	No sunshine				
27	7	27	05	02	97	16.7	61	21.2	12.8	9.4	14.4	14.5	15.0	14.9	14.2	13.3	03	0	0.0	12.3	0	0	0	0	0	1025.5	0.0	0.0	2.5	1 2.5				
28	1	36	05	02	97	16.5	57	20.2	6.7	4.0	12.4	12.8	14.2	15.1	14.6	13.4	03	0	0.0	10.0	0	0	0	0	0	1026.0	0.0	0.0	2.8	Slightly warmer than normal, but				
29	1	36	02	02	97	15.5	51	17.4	7.7	4.7	12.7	13.1	14.4	14.9	14.4	13.4	03	0	tr	7.7	0	0	0	0	0	1020.5	0.0	0.0	2.6	cooling off a little towards the				
30	7	23	02	02	97	12.8	72	17.1	5.7	3.1	12.0	12.6	13.7	14.5	14.2	13.5	03	0	5.0	1.9	0	0	0	0	0	1014.0	2.6	0.0	1.8	end of the month. Rainfall and				
31	7	23	02	02	97	13.9	83	17.9	6.4	3.9	12.7	12.8	13.5	14.2	14.0	13.5	10	0	4.3	5.1	0	0	0	0	0	1012.0	2.0	0.0	2.1	sunshine amounts a little below				
Monthly means						15.1	76	20.0	9.6	6.7	13.1	13.2	13.8	14.0	13.4	12.3																	normal for May. It was the	
Monthly totals																												1018.9					warmest May since 2020 and	
Highest values																					42.4	182.4							36.2	0.0	62.5		the fifth sunniest in the last 7	
Lowest values						18.8		25.7	13.6	11.8	15.6	15.6	16.1	16.0	14.9	13.5					8.5	12.4							7.2	0.0	3.2		years, although this was a	
1991-2020 monthly climatological averages						11.2	51	14.5	5.7	2.2	10.1	10.3	11.5	11.6	11.1	10.7																		sunny period for May. It was the
						72	18.6	8.6	6.4	12.0	12.2	13.1	13.1	12.4	11.5																			driest May since 2020, but only
																																		two Mays have been drier in the
																																		past 10 years. Precipitation fell
																																		on more days than normal.

Key

DD: date

07GMT observations

N	cloud cover (oktas, 9=obscured)	dd	wind direction (degrees/10)
ff	wind speed (knots)		
ww	present weather code		
1	cloud decreasing	50	intermittent slight drizzle
2	sky not changing	60	intermittent slight rain
3	cloud increasing	63	continuous moderate rain
21	recent rain shower	80	slight rain hower
VV	visibility (00-50 metres/100, 94 very poor, 95 poor, 96 moderate, 97 good)		

Soil temperatures are for 0700GMT beneath bare soil (5, 10, 20cm) or grass (30, 50, 100cm)

09GMT observations

Temp	temperature (degC)	RH	relative humidity (%)
E	state of ground (00 dry, 10 moist, 20 wet, 90 cracked)	SS	snow depth (cm)
Press	air pressure (mb)		

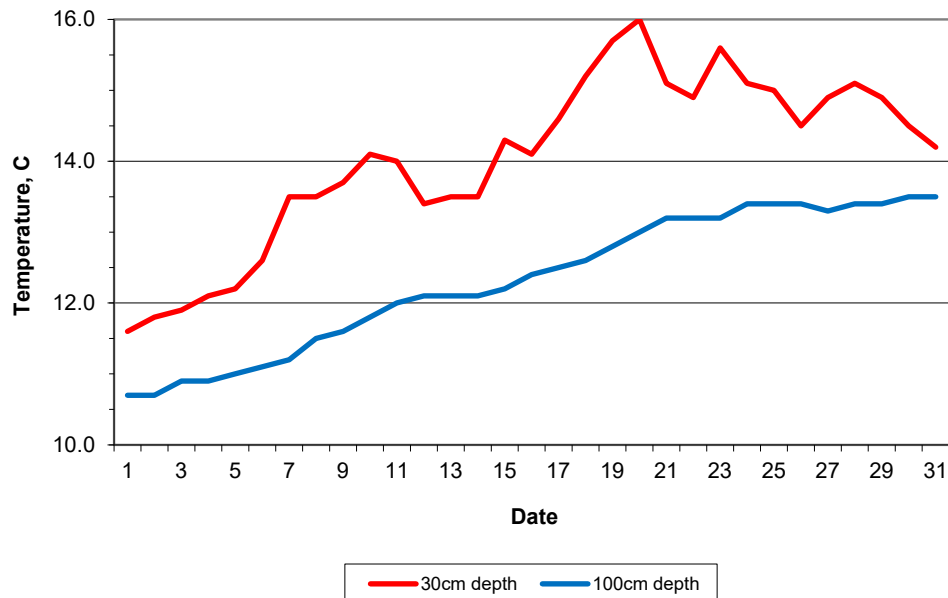
24 hour readings

Max	maximum temperature (degC) beginning 09GMT	Min	minimum temperature (degC) ending 09GMT
Gmin	grass minimum temperature (degC) ending 09GMT	Rain	precipitation beginning 09GMT
Sun	sunshine (hours) sunrise-sunset	Rain hrs	hours of rainfall (>0.1mm/h) 09-09GMT
Fr. Hrs	hours of air frost (00-24GMT)	Pch Evap	Piche evaporation (ml) beginning 09GMT

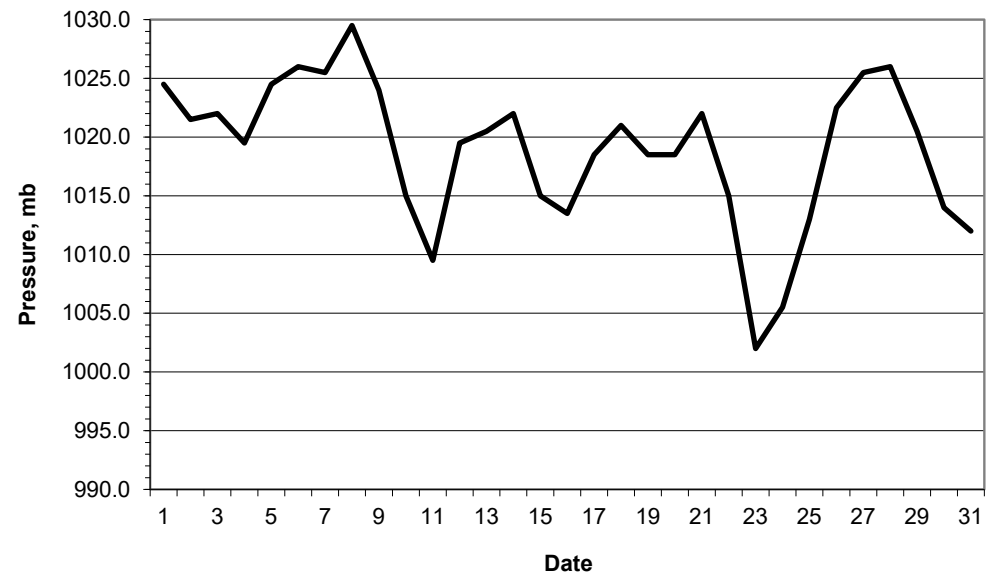
Days with

S	snow(5) or sleet(1) falling	L	50% snow cover at 09GMT	H	hail or ice pellets
T	thunder heard	G	gale	F	fog at 09GMT

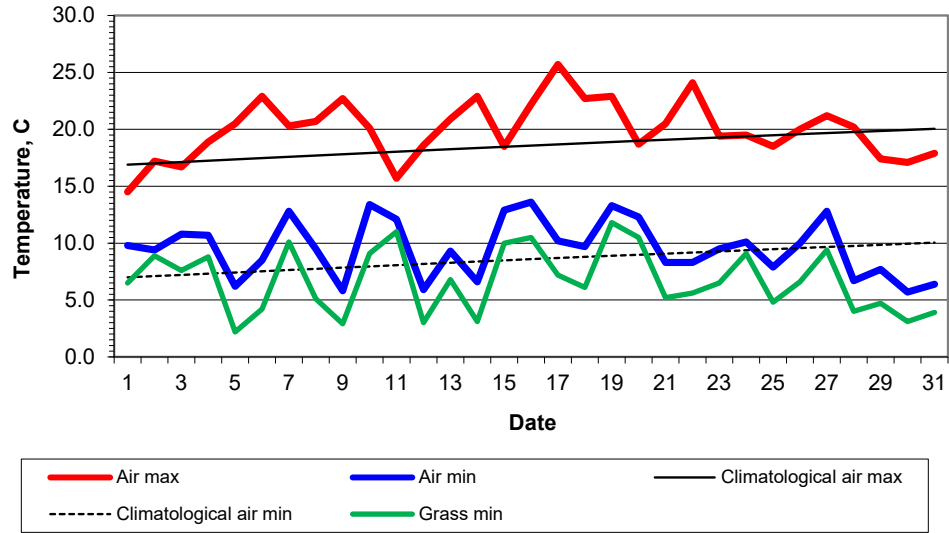
Daily soil temperatures, 0700GMT



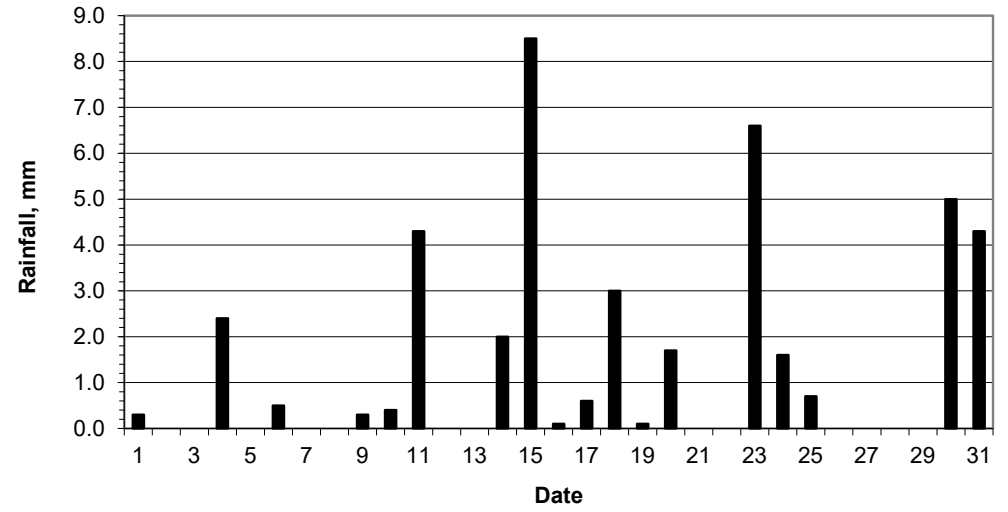
Mean sea level pressure, 0900GMT



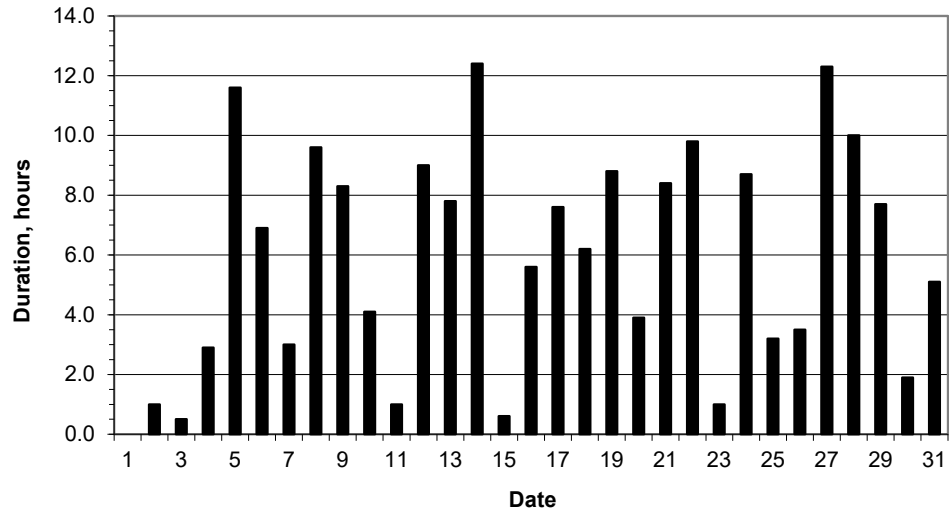
Daily temperature extremes



Daily rainfall



Daily sunshine



Daily evaporation

