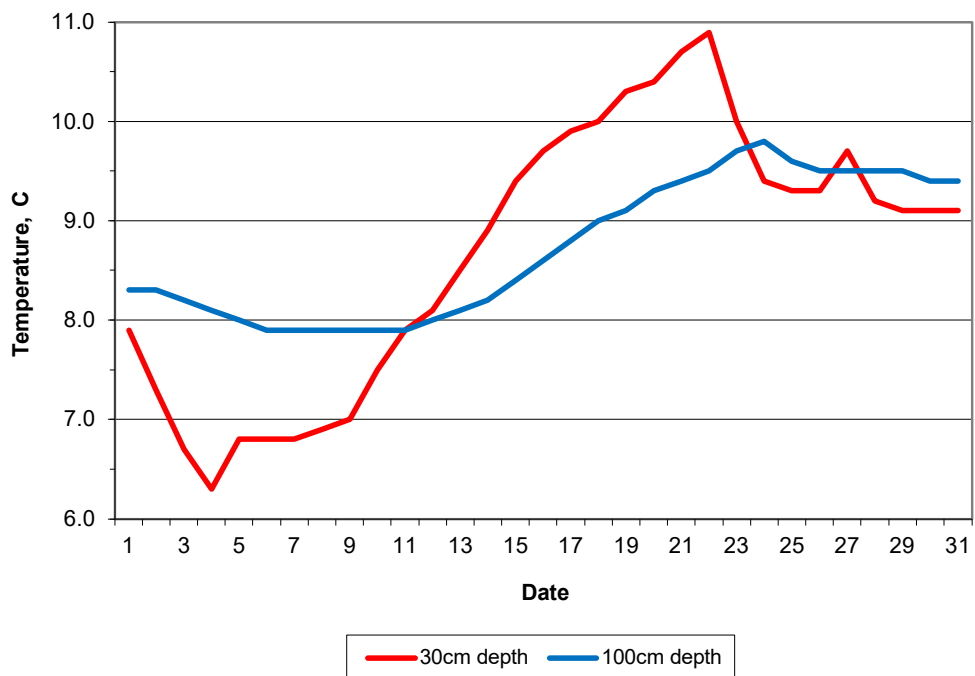


MAIDENHEAD METEOROLOGICAL OBSERVATIONS FOR MARCH 2024

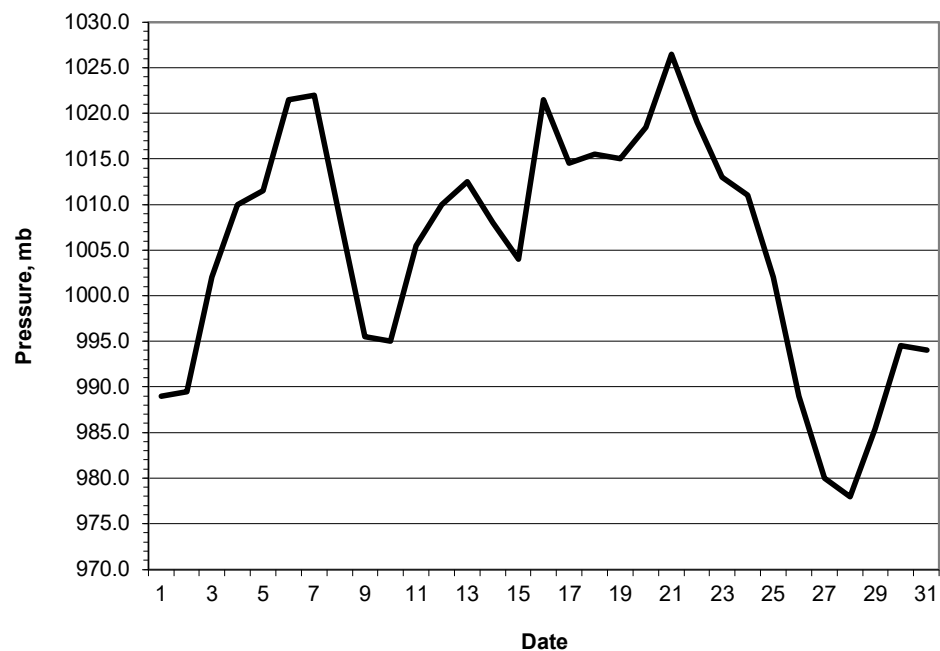
						0900GMT		Temperature				Soil temperatures (depth in cm)								Rain	Fr.	Pch													
DD	N	dd	ff	ww	VV	Temp	RH	Max	Min	Gmin	5	10	20	30	50	100	E	SS	Rain	Sun	S	L	H	T	G	F	Press	hrs	hrs	Evap					
01	8	18	09	63	96	5.2	89	9.0	1.7	-3.4	5.4	6.0	6.7	7.9	7.6	8.3	20	0	7.3	4.2	0	0	0	0	0	0	989.0	3.9	0.0	0.8	Number of				
02	7	18	05	21	97	5.3	89	8.3	2.7	-1.4	5.5	5.7	6.3	7.3	7.3	8.3	20	0	2.6	1.6	0	0	4	0	0	0	989.5	0.5	0.0	0.4	days with				
03	6	27	02	02	94	0.1	91	10.3	-1.7	-5.8	2.8	3.5	5.0	6.7	7.1	8.2	10	0	0.1	7.2	0	0	0	0	0	1	1002.0	0.1	8.7	0.6	2024	normal			
04	5	18	02	02	97	4.0	91	11.6	-1.2	-5.5	2.7	3.0	4.5	6.3	6.6	8.1	10	0	0.7	4.6	0	0	0	0	0	0	1010.0	0.7	6.3	1.2	Snow/sleet falling				
05	8	09	05	02	97	7.7	88	11.6	4.0	0.2	6.6	6.5	6.5	6.8	6.6	8.0	10	0	0.1	3.3	0	0	0	0	0	0	1011.5	0.1	0.0	0.6	0	1.6			
06	8	00	00	42	07	4.2	91	10.7	1.7	-3.1	4.9	5.2	5.8	6.8	6.8	7.9	10	0	tr	1.1	0	0	0	0	0	0	1021.5	0.0	0.0	0.5	50% snow cover 09GMT				
07	7	09	05	02	97	7.5	80	11.1	3.0	-2.9	6.0	6.0	6.3	6.8	6.8	7.9	10	0	0.0	1.1	0	0	0	0	0	0	1022.0	0.0	0.0	1.3	0	0.3			
08	7	05	09	02	97	6.9	77	11.8	4.3	-1.3	4.7	5.6	6.0	6.9	6.9	7.9	10	0	0.0	7.7	0	0	0	0	0	0	1008.5	0.0	0.0	1.8	Hail or ice pellets				
09	4	09	09	02	97	8.9	72	14.1	6.2	0.5	6.1	6.5	6.6	7.0	6.9	7.9	10	0	2.9	2.2	0	0	0	0	0	0	995.5	4.8	0.0	1.4	2	1.3			
10	8	05	05	21	96	8.7	90	10.1	8.2	4.5	7.5	7.5	7.5	7.5	7.1	7.9	20	0	9.3	0.0	0	0	0	0	0	0	995.0	10.8	0.0	0.2	Thunder				
11	8	18	05	10	95	7.3	89	10.0	7.3	5.6	7.3	7.7	7.4	7.9	7.5	7.9	20	0	8.8	0.0	0	0	0	0	0	0	1005.5	4.2	0.0	0.4	0	0.4			
12	8	23	05	61	96	8.7	95	13.5	6.8	1.9	7.3	7.5	7.6	8.1	7.6	8.0	20	0	5.8	0.0	0	0	0	0	0	0	1010.0	3.4	0.0	0.5	Gale				
13	8	18	02	20	96	11.4	83	13.0	8.7	7.0	9.4	8.9	9.0	8.5	7.9	8.1	20	0	tr	0.0	0	0	0	0	0	0	1012.5	0.0	0.0	0.9	0	0.0			
14	8	23	05	02	97	11.1	83	17.5	8.2	3.0	8.8	10.0	9.0	8.9	8.3	8.2	10	0	2.3	1.8	0	0	0	0	0	0	1008.0	1.3	0.0	1.2	Fog at 09GMT				
15	8	23	09	02	97	12.5	80	16.4	11.1	6.8	10.0	8.5	9.8	9.4	8.6	8.4	20	0	0.5	4.1	0	0	0	0	0	0	1004.0	0.3	0.0	1.3	1	0.6			
16	1	08	02	02	97	9.2	74	13.5	5.8	0.6	8.0	10.1	9.4	9.7	9.1	8.6	10	0	3.0	4.3	0	0	0	0	0	0	1021.5	4.0	0.0	1.2	Air frost				
17	8	23	05	61	96	11.6	89	15.9	9.2	3.6	10.1	10.0	10.0	9.9	9.2	8.8	20	0	0.6	2.4	0	0	0	0	0	0	1014.5	0.5	0.0	0.8	2	4.7			
18	7	23	05	02	97	11.3	84	15.7	8.9	4.5	9.9	10.5	10.0	10.0	9.4	9.0	10	0	0.1	1.9	0	0	0	0	0	0	1015.5	0.1	0.0	1.5	Ground frost				
19	8	18	09	02	97	11.7	78	13.4	11.0	6.2	10.4	10.6	10.4	10.3	9.6	9.1	10	0	0.7	0.0	0	0	0	0	0	0	1015.0	1.5	0.0	0.5	13	13.5			
20	8	18	02	02	97	11.2	89	17.6	10.4	6.7	10.6	9.8	10.6	10.4	9.7	9.3	10	0	tr	4.5	0	0	0	0	0	0	1018.5	0.0	0.0	1.1	0.2mm precipitation				
21	7	09	02	02	97	10.3	84	16.5	6.7	1.8	9.6	10.5	10.4	10.7	10.0	9.4	10	0	0.1	0.5	0	0	0	0	0	0	1026.5	0.2	0.0	1.2	20	13.2			
22	8	23	02	21	96	10.6	85	12.1	9.7	5.6	10.3	7.4	10.7	10.9	10.1	9.5	10	0	0.5	1.8	0	0	0	0	0	0	1019.0	1.1	0.0	1.5	1.0mm precipitation				
23	1	27	09	03	97	8.7	59	11.0	4.0	-0.3	6.8	7.1	8.6	10.0	10.0	9.7	10	0	1.0	7.4	0	0	5	0	0	0	1013.0	0.2	0.0	2.0	13	9.4			
24	7	23	13	02	97	9.8	61	14.3	5.6	0.8	6.8	8.1	8.0	9.4	9.4	9.8	10	0	0.5	9.4	0	0	0	0	0	0	1011.0	1.0	0.0	1.9	5.0mm precipitation				
25	8	13	09	60	97	8.3	78	12.0	4.7	-1.0	7.8	8.5	8.5	9.3	9.3	9.6	10	0	0.2	0.0	0	0	0	0	0	0	1002.0	0.4	0.0	1.8	7	3.3			
26	7	09	05	02	97	11.0	61	14.7	8.3	4.3	8.5	7.9	8.9	9.3	9.1	9.5	10	0	13.4	2.7	0	0	0	0	0	0	989.0	8.3	0.0	1.3	No sunshine				
27	3	18	09	02	97	9.3	72	11.4	3.9	-1.5	7.3	7.9	8.9	9.7	9.4	9.5	20	0	9.5	6.8	0	0	0	0	0	0	980.0	3.6	0.0	1.2	6	5.6			
28	7	13	05	25	97	8.3	75	10.9	3.3	-1.3	6.9	7.4	8.3	9.2	9.1	9.5	20	0	9.1	2.1	0	0	0	0	0	0	978.0	3.4	0.0	1.3	Another mild month, but				
29	7	18	09	02	97	10.2	80	14.4	6.7	1.7	8.3	8.2	8.5	9.1	9.0	9.5	20	0	0.1	7.0	0	0	0	0	0	0	985.4	0.1	0.0	1.6	slightly cooler than March				
30	4	09	02	02	97	8.6	91	17.0	2.3	-1.6	6.9	7.1	8.0	9.1	9.0	9.4	10	0	0.0	10.4	0	0	0	0	0	0	994.5	0.0	0.0	1.7	2019. Only 2 air frosts				
31	8	09	05	10	96	10.0	75	13.0	4.1	-1.2	8.0	8.3	8.4	9.1	9.1	9.4	10	0	1.1	1.1	0	0	0	0	0	0	994.0	1.2	0.0	0.8	and no snowfalls. The				
Monthly means						8.7	81	13.0	5.7	1.1	7.5	7.7	8.1	8.7	8.4	8.7											1005.2				lowest average March air pressure since 2018				
Monthly totals																80.3	101.2			55.7	15.0	34.5			helped to make this a wet month, but not as wet as										
Highest values						12.5	17.6	11.1	7.0	10.6	10.6	10.7	10.9	10.1	9.8	13.4	10.4											10.8	8.7	2.0			March 2023. The cloud and rain helped make this		
Lowest values						0.1	59	8.3	-1.7	-5.8	2.7	3.0	4.5	6.3	6.6	7.9																a dull March and the soil was frequently classified			
1991-2020 monthly climatological average						83	12.1	3.7	0.8	5.9	5.9	6.8	7.3	7.0	7.3	42.4	122.1											1016.7	46.3	20.5	42.9			as 'wet'.	

Key
 DD: date
 07GMT observations:
 N cloud cover (oktas, 9=obscured) dd wind direction (degrees/10)
 ff wind speed (knots)
 ww present weather code
 1 cloud decreasing 21 recent rain
 2 sky not changing 60 intermittent slight rain
 3 cloud increasing 61 continuous slight rain
 5 haze 71 continuous slight snow
 VV visibility (00-50 metres/100, 94 very poor, 95 poor, 96 moderate, 97 good)
 Soil temperatures are for 0700GMT beneath bare soil (5, 10, 20cm) or grass (30, 50, 100cm)
 09GMT observations:
 Temp temperature (degC) RH relative humidity (%)
 E state of ground (X1,X2 slight snow, 00 dry, 10 moist, 20 wet, 40 frozen, 90 cracked)
 Press air pressure (mb) SS snow depth (cm)
 24 hour readings:
 Max maximum temperature (degC) beginning 09GMT Min minimum temperature (degC) ending 09GMT
 Gmin grass minimum temperature (degC) ending 09GMT Rain precipitation beginning 09GMT
 Sun sunshine (hours) sunrise-sunset Rain hrs hours of rainfall (>0.1mm/h) 09-09GMT
 Fr. Hrs hours of air frost (00-24GMT) Pch Evap Piche evaporation (ml) beginning 09GMT
 Days with
 S snow(5) or sleet(1) falling L 50% snow cover at 09GMT H hail or ice pellets
 T thunder heard G gale F fog at 09GMT

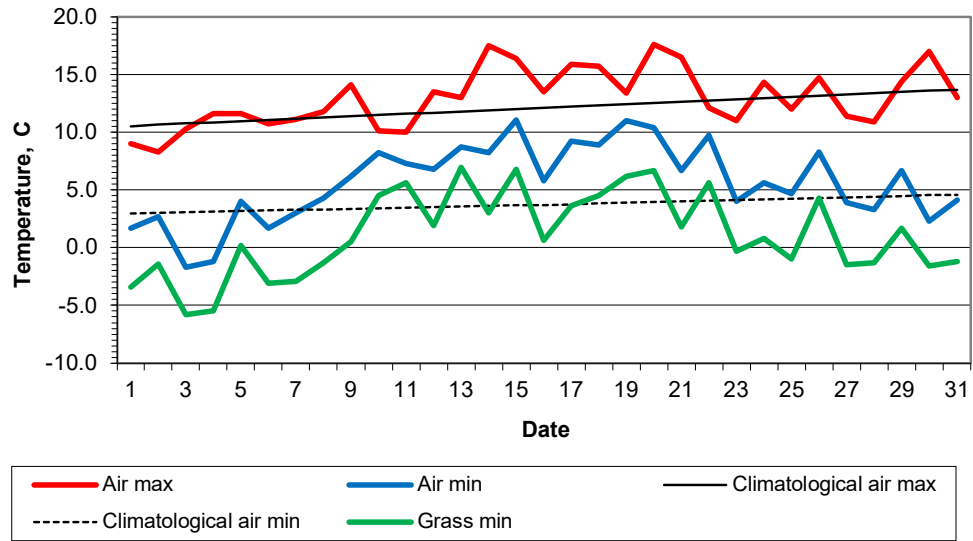
Daily soil temperatures, 0700GMT



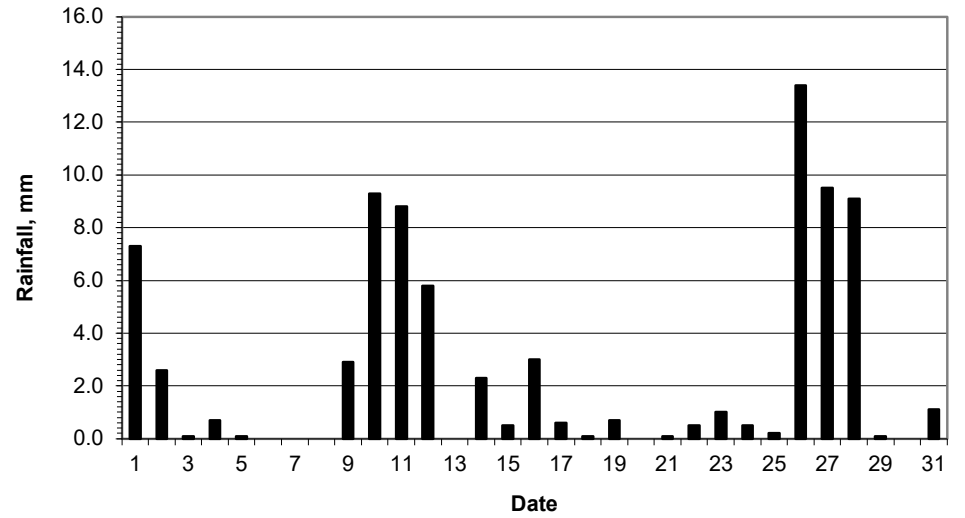
Mean sea level pressure, 0900GMT



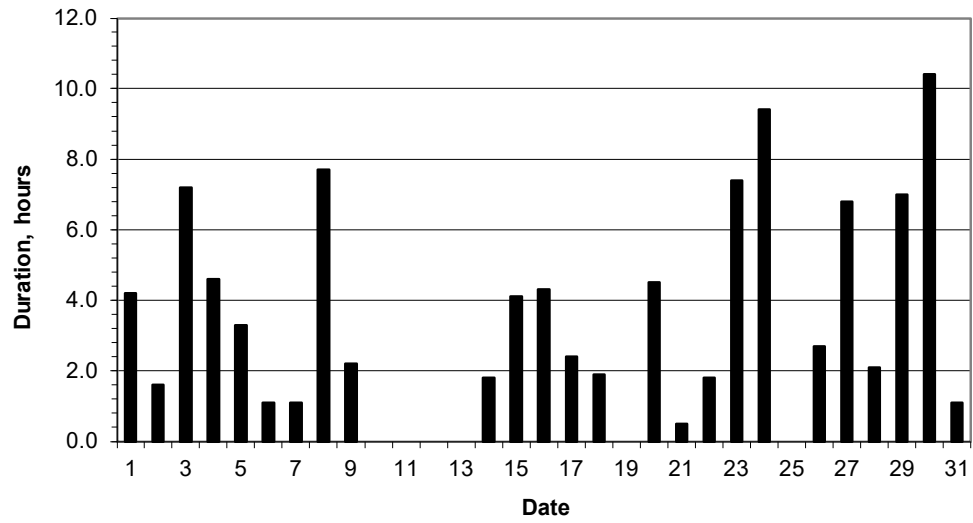
Daily temperature extremes



Daily rainfall



Daily sunshine



Daily evaporation

