

MAIDENHEAD METEOROLOGICAL OBSERVATIONS FOR MARCH 2023

DD	N	dd	ff	ww	VV	0900GMT		Temperature				Soil temperatures (depth in cm)						E	SS	Rain	Sun	S	L	H	T	G	F	Press	Rain hrs	Fr. hrs	Pch Evap		
						Temp	RH	Max	Min	Gmin	5	10	20	30	50	100																	
01	7	05	02	03	97	5.4	81	8.6	3.6	-0.9	4.6	5.0	5.2	5.7	5.6	7.1	10	0	0.1	0.5	0	0	0	0	0	0	0	1031.5	0.1	0.0	0.9	Number of days with 2023 normal Snow/sleet falling 3 1.6 50% snow cover 09GMT 1 0.3 Hail or ice pellets 2 1.3 Thunder 2 0.4 Gale 0 0.0 Fog at 09GMT 0 0.6 Air frost 3 4.7 Ground frost 9 13.5 0.2mm precipitation 23 13.2 1.0mm precipitation 20 9.4 5.0mm precipitation 9 3.3 No sunshine 7 5.6 March ended with the wettest March day since 1964 when 36.1 mm fell locally in 24 hours. It was the wettest March overall since 1981 when 123.7 mm fell in the town. It was the coolest March for two years, and the dullest since 1996 with 21 h less sunshine than in February 2023.	
02	1	36	02	02	97	4.5	73	9.7	1.9	-2.2	3.4	4.3	5.0	5.8	5.9	7.0	10	0	0.0	8.5	0	0	0	0	0	0	1026.0	0.0	0.0	1.6			
03	8	05	02	02	97	5.4	68	6.7	2.0	-3.4	4.4	4.6	5.1	5.7	5.8	7.0	10	0	tr	0.0	0	0	0	0	0	0	1029.5	0.0	0.0	1.4			
04	8	05	05	02	97	5.5	64	7.2	5.0	3.3	4.7	5.0	5.3	5.8	5.8	7.0	10	0	tr	0.0	0	0	0	0	0	0	1031.0	0.0	0.0	1.5			
05	8	31	02	02	96	3.4	63	6.0	2.9	1.5	4.4	5.0	5.4	5.9	5.8	6.9	10	0	tr	0.1	0	0	0	0	0	0	1022.5	0.0	0.0	0.7			
06	7	23	02	02	97	4.7	85	10.1	1.9	-1.8	4.5	4.6	5.1	5.8	5.7	7.0	10	0	4.2	0.1	0	0	0	0	0	0	1007.5	4.2	0.0	1.0			
07	8	27	02	02	97	3.2	88	6.1	2.3	1.6	5.0	5.3	5.6	6.1	5.9	6.9	20	0	4.2	0.1	5	0	0	0	0	0	1000.5	4.6	2.5	0.6			
08	8	09	02	68	96	1.5	85	3.3	-0.5	-3.8	2.9	3.6	4.5	5.7	5.8	6.9	X2	1	10.0	0.0	5	1	0	0	0	0	991.0	15.1	0.0	0.1			
09	8	31	05	60	95	3.3	93	10.7	1.5	0.1	2.0	4.0	4.2	5.0	5.4	6.9	20	0	7.4	0.0	0	0	0	0	0	0	995.0	5.2	0.0	0.8			
10	8	05	13	60	96	2.5	85	5.7	2.3	2.9	5.6	6.0	6.0	5.9	5.6	6.7	20	0	0.0	1.0	5	0	0	0	0	0	995.5	0.0	1.9	0.7			
11	7	23	05	02	97	1.7	82	9.6	-2.7	-6.2	2.8	3.2	4.0	5.5	5.6	6.7	20	0	2.2	3.5	0	0	0	0	0	0	1010.5	3.6	8.0	1.0			
12	6	23	05	02	97	9.3	92	14.0	1.7	0.2	6.3	6.2	6.0	6.0	5.6	6.7	10	0	1.7	1.5	0	0	0	0	0	0	1009.0	3.0	0.0	0.7			
13	8	31	13	60	97	12.6	69	14.7	9.3	9.0	8.3	7.0	7.6	6.9	6.1	6.7	10	0	0.9	2.0	0	0	0	0	0	0	991.0	0.4	0.0	2.0			
14	8	18	09	02	97	4.8	78	11.0	4.2	0.9	6.4	4.6	7.6	7.5	6.8	6.9	10	0	0.4	6.8	0	0	0	0	0	0	1003.5	0.5	0.0	1.4			
15	8	23	02	02	97	2.7	87	10.0	-1.3	-4.8	3.9	7.4	5.5	6.8	6.7	7.1	10	0	5.5	1.5	0	0	0	0	0	0	1017.5	6.2	4.3	0.7			
16	8	18	09	02	97	9.8	89	14.6	2.7	4.0	7.3	8.6	7.1	7.0	6.6	7.1	20	0	0.1	1.6	0	0	0	0	0	0	1007.0	0.1	0.0	1.1			
17	8	13	05	02	96	11.4	86	15.7	9.8	5.6	8.8	8.6	8.6	7.9	7.2	7.1	10	0	5.0	4.0	0	0	0	0	0	0	1004.0	3.6	0.0	0.8			
18	8	27	05	61	96	10.1	89	14.1	9.6	5.8	8.6	7.5	8.6	8.2	7.6	7.4	20	0	5.0	2.3	0	0	0	0	0	0	1005.5	4.9	0.0	0.5			
19	8	23	05	02	97	8.1	79	11.6	3.8	-1.0	7.1	8.5	8.0	8.4	7.8	7.6	20	0	tr	0.3	0	0	0	0	0	0	1016.5	0.0	0.0	1.1			
20	8	23	05	20	97	10.7	85	13.3	8.1	4.6	8.4	9.1	8.5	8.5	7.9	7.7	10	0	3.6	0.0	0	0	0	0	0	0	1017.0	2.8	0.0	0.6			
21	7	23	05	02	96	11.0	88	15.3	9.2	7.9	9.2	9.6	9.1	8.8	8.2	7.9	20	0	2.7	2.0	0	0	0	0	0	0	1009.0	3.8	0.0	1.6			
22	8	23	09	50	96	11.3	52	15.6	10.4	7.1	9.6	9.0	9.5	9.2	8.5	8.0	20	0	1.9	2.3	0	0	0	0	0	0	1000.5	0.9	0.0	1.6			
23	4	23	05	02	97	11.6	72	14.7	7.7	2.6	8.8	8.5	9.4	9.4	8.7	8.2	20	0	3.0	2.7	0	0	0	0	0	0	998.5	3.5	0.0	1.4			
24	2	23	09	02	97	11.3	73	14.2	6.8	1.5	8.3	8.6	9.2	9.5	8.9	8.4	20	0	13.6	4.8	0	0	4	1	0	0	999.0	6.2	0.0	1.1			
25	6	27	05	03	97	11.2	69	15.5	7.2	3.4	8.4	9.0	8.9	9.2	8.8	8.5	20	0	6.6	6.8	0	0	0	0	0	0	1004.0	8.0	0.0	1.9			
26	8	23	05	60	96	7.3	87	10.3	6.6	3.1	8.4	7.5	9.3	9.4	8.9	8.6	20	0	0.3	0.2	0	0	0	0	0	0	1003.0	1.2	0.0	1.0			
27	7	05	02	02	97	7.7	57	13.0	4.2	0.9	7.0	7.5	8.4	9.0	8.8	8.7	10	0	1.0	7.4	0	0	0	0	0	0	1026.0	0.6	0.0	1.7			
28	8	13	02	60	97	8.2	85	11.0	3.6	-1.5	7.2	7.5	8.0	8.7	8.6	8.7	10	0	2.6	0.0	0	0	0	0	0	0	1019.5	2.3	0.0	0.7			
29	8	18	05	10	96	11.0	86	13.4	7.4	6.5	8.7	8.6	8.6	8.7	8.5	8.7	10	0	3.5	0.0	0	0	0	0	0	0	1010.0	1.2	0.0	0.9			
30	8	23	02	60	97	13.0	75	16.1	10.3	6.6	9.4	9.5	9.6	9.2	8.6	8.7	10	0	8.9	4.9	0	0	5	1	0	0	1004.5	9.5	0.0	1.4			
31	8	23	05	61	96	11.0	86	14.5	10.2	9.0	10.0	10.5	10.4	10.0	9.2	8.8	20	0	24.8	0.5	0	0	0	0	0	0	983.0	14.0	0.0	0.2			
Monthly means						7.6	79	11.5	4.9	2.0	6.6	6.9	7.2	7.5	7.1	7.5												1008.7					
Monthly totals																				119.2	65.4								105.5	16.7	32.7		
Highest values						13.0		16.1	10.4	9.0	10.0	10.5	10.4	10.0	9.2	8.8			24.8	8.5									15.1	8.0	2.0		
Lowest values						1.5	52	3.3	-2.7	-6.2	2.0	3.2	4.0	5.0	5.4	6.7																	
1991-2020 monthly climatological average						83	12.1	3.7	0.8	5.9	5.9	6.8	7.3	7.0	7.3			42.4	122.1										1016.7	46.3	20.5	42.9	

Key
 DD: date

07GMT observations:
 N cloud cover (oktas, 9=obscured) dd wind direction (degrees/10)
 ff wind speed (knots)
 ww present weather code
 1 cloud decreasing 21 recent rain
 2 sky not changing 60 intermittent slight rain
 3 cloud increasing 61 continuous slight rain
 5 haze 71 continuous slight snow

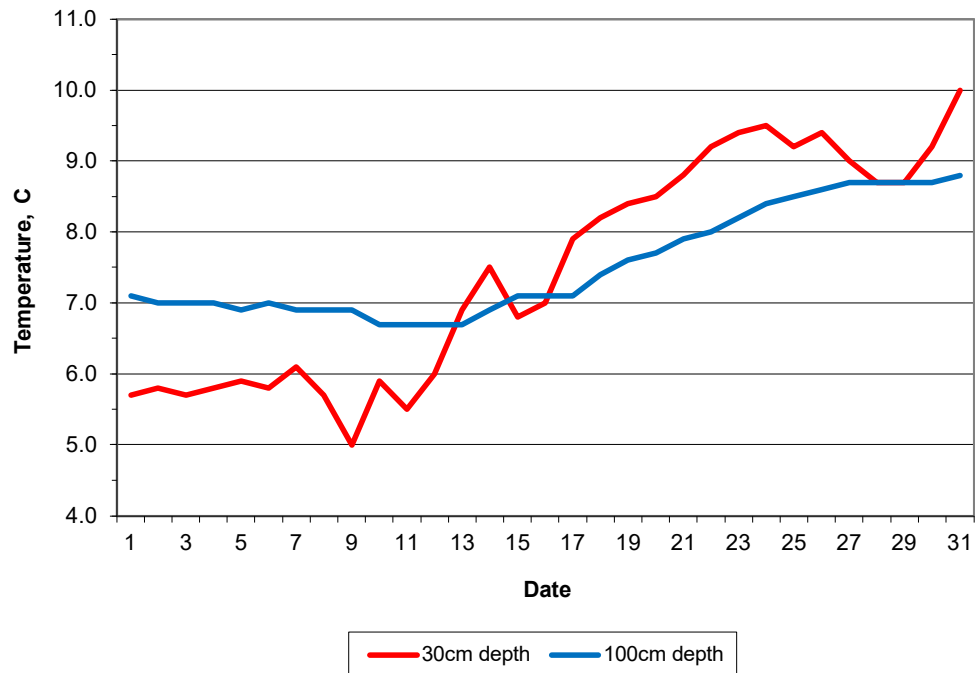
VV visibility (00-50 metres/100, 94 very poor, 95 poor, 96 moderate, 97 good)
 Soil temperatures are for 0700GMT beneath bare soil (5, 10, 20cm) or grass (30, 50, 100cm)

09GMT observations:
 Temp temperature (degC) RH relative humidity (%)
 E state of ground (X1,X2 slight snow, 00 dry, 10 moist, 20 wet, 40 frozen, 90 cracked)
 Press air pressure (mb) SS snow depth (cm)

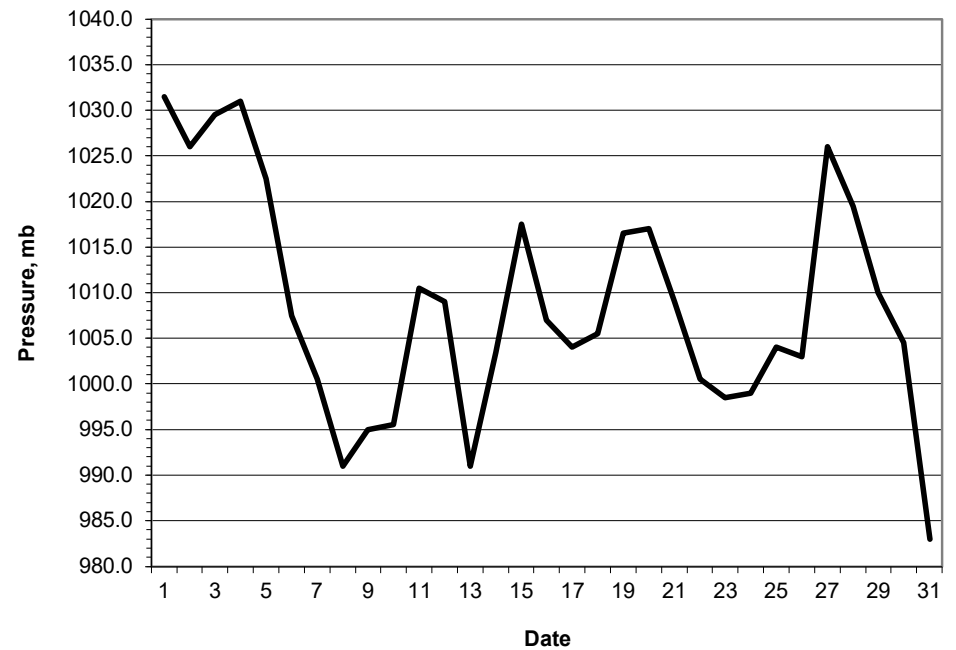
24 hour readings:
 Max maximum temperature (degC) beginning 09GMT Min minimum temperature (degC) ending 09GMT
 Gmin grass minimum temperature (degC) ending 09GMT Rain precipitation beginning 09GMT
 Sun sunshine (hours) sunrise-sunset Rain hrs hours of rainfall (>0.1mm/h) 09-09GMT
 Fr. Hrs hours of air frost (00-24GMT) Pch Evap Piche evaporation (ml) beginning 09GMT

Days with
 S snow(5) or sleet(1) falling L 50% snow cover at 09GMT H hail or ice pellets
 T thunder heard G gale F fog at 09GMT

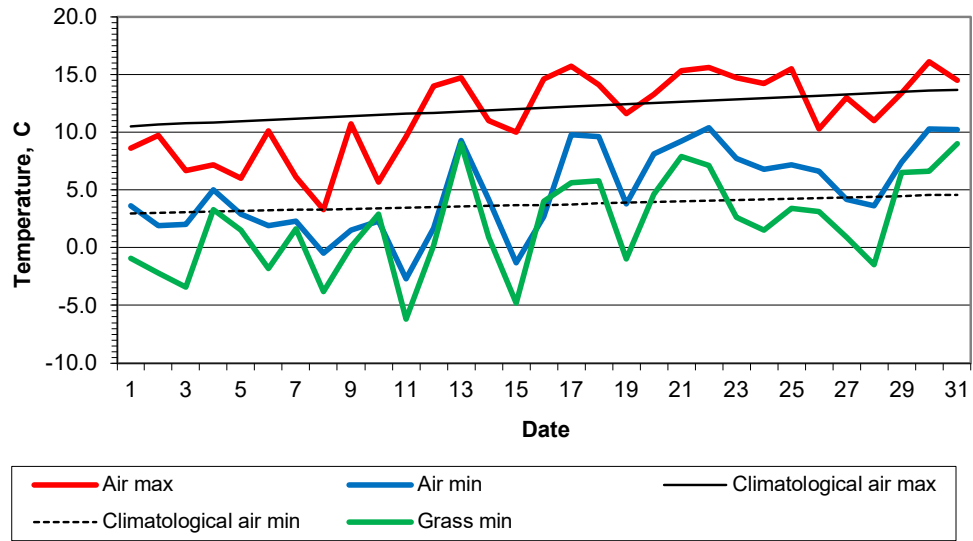
Daily soil temperatures, 0700GMT



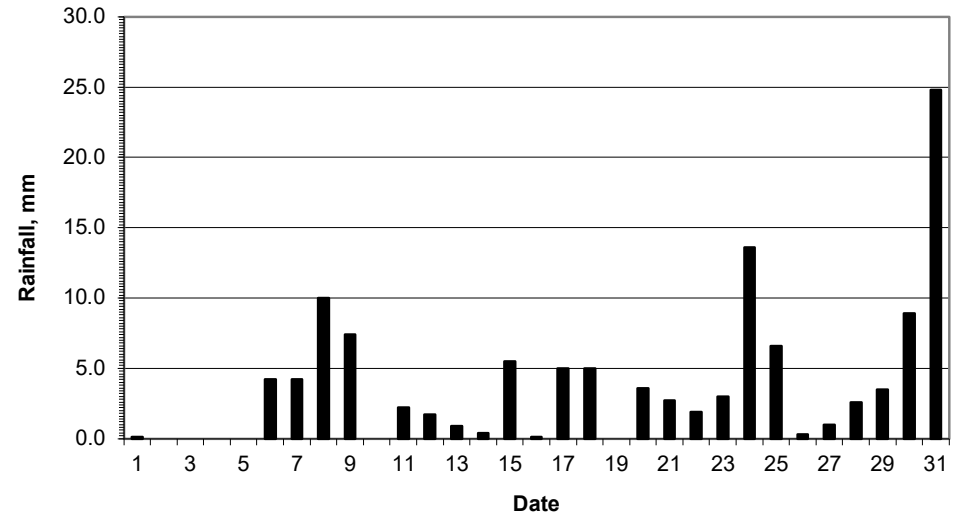
Mean sea level pressure, 0900GMT



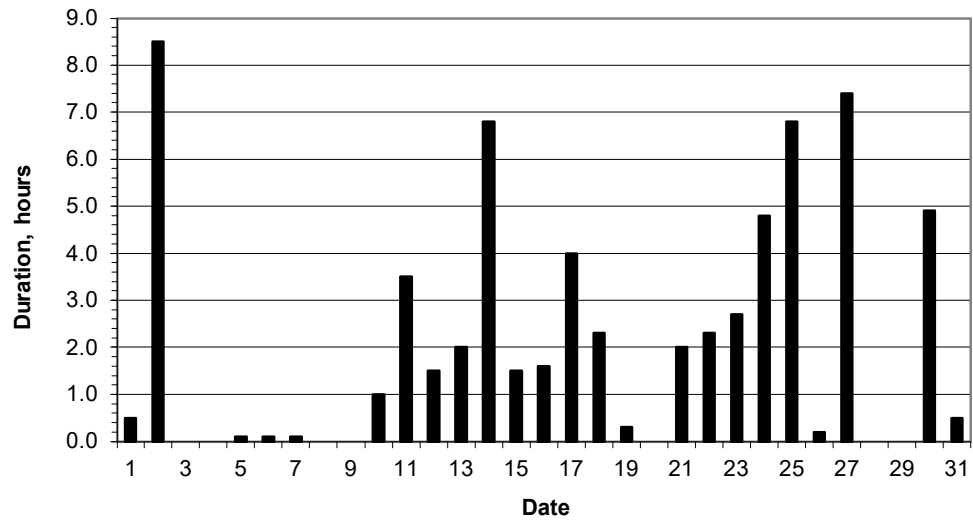
Daily temperature extremes



Daily rainfall



Daily sunshine



Daily evaporation

