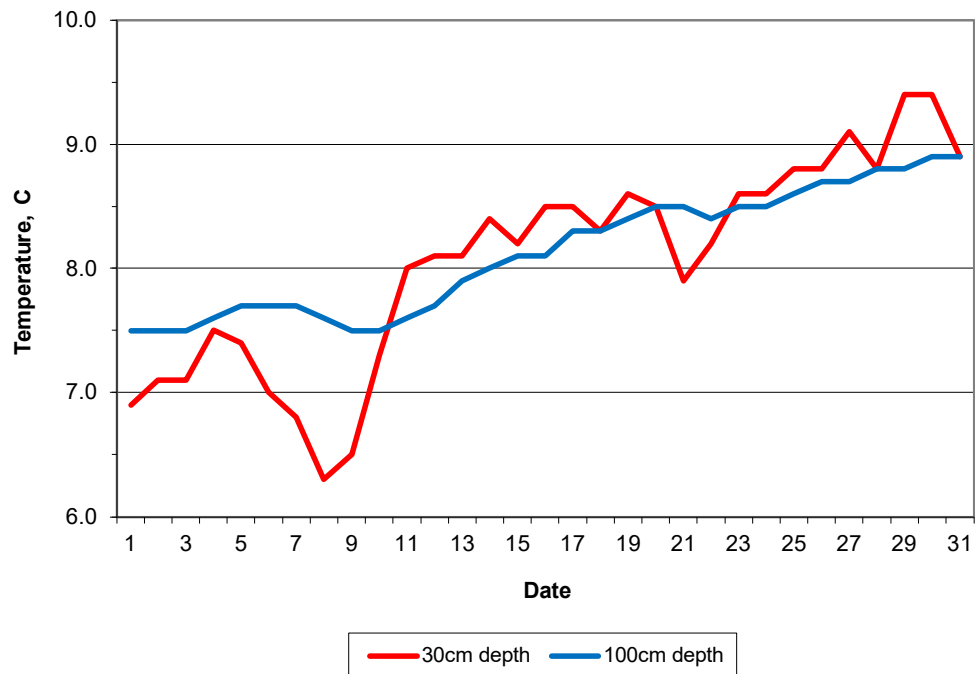


MAIDENHEAD METEOROLOGICAL OBSERVATIONS FOR MARCH 2022

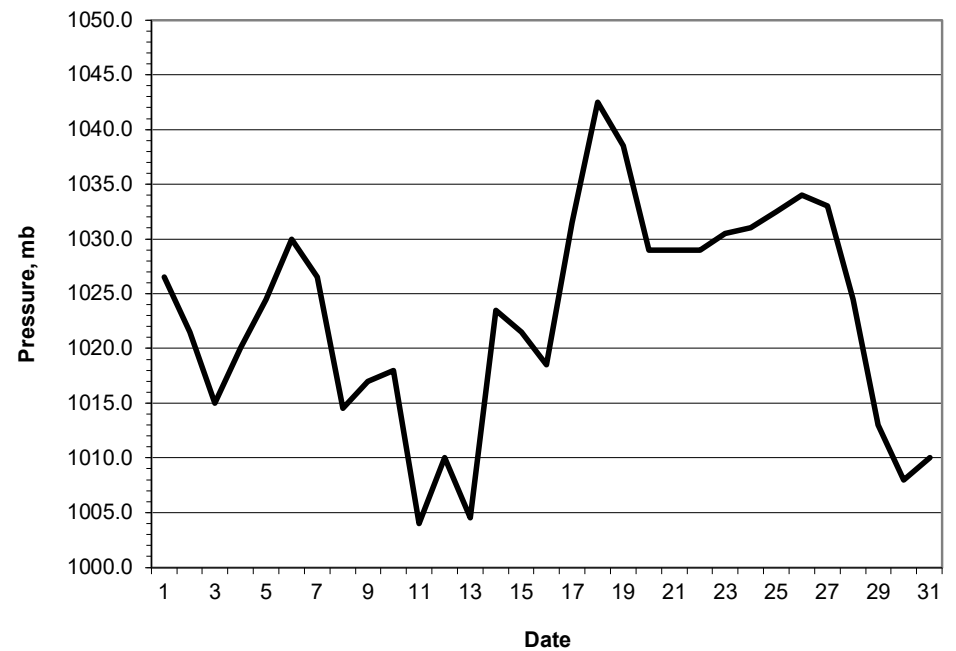
DD	N	dd	ff	ww	VV	0900GMT		Temperature				Soil temperatures (depth in cm)						E	SS	Rain	Sun	S	L	H	T	G	F	Press	Rain hrs	Fr. hrs	Pch Evap	
						Temp	RH	Max	Min	Gmin	5	10	20	30	50	100																
01	8	05	09	21	96	7.5	88	8.3	7.5	6.8	7.2	7.0	7.1	6.9	6.5	7.5	10	0	12.6	0.0	0	0	0	0	0	0	1026.5	15.1	0.0	0.4	Number of days with 2022 normal Snow/sleet falling 1 1.6 50% snow cover 09GMT 0 0.3 Hail or ice pellets 1 1.3 Thunder 0 0.4 Gale 0 0.0 Fog at 09GMT 0 0.6 Air frost 1 4.7 Ground frost 15 13.5 0.2mm precipitation 8 13.2 1.0mm precipitation 5 9.4 5.0mm precipitation 2 3.3 No sunshine 5 5.6 A warm, dry and sunny spell after mid-month, but wintry showers arrived on the 31st. It was the mildest March for 3 years and sunnier and drier than normal; winds were frequently from the E or NE. Only the 21st gave an air frost, but ground frosts were frequent. Just 0.2 mm of rain fell in the final 15 days.	
02	8	09	02	21	96	7.0	90	7.5	6.9	6.3	7.1	6.8	7.0	7.1	6.7	7.5	20	0	3.8	0.0	0	0	0	0	0	1021.5	6.6	0.0	0.2			
03	8	09	02	02	96	7.2	86	12.0	5.2	0.9	6.4	6.2	6.6	7.1	6.9	7.5	20	0	0.9	0.0	0	0	0	0	0	1015.0	2.5	0.0	0.5			
04	8	31	05	02	97	6.4	88	8.1	6.4	6.3	7.3	7.3	7.7	7.5	7.2	7.6	20	0	0.1	0.2	0	0	0	0	0	1020.0	0.1	0.0	0.9			
05	8	36	05	50	97	5.9	76	7.7	3.8	-0.9	6.1	6.1	6.8	7.4	7.2	7.7	10	0	0.2	0.1	0	0	0	0	0	1024.5	0.1	0.0	1.1			
06	7	05	02	02	97	4.9	70	8.3	3.9	0.1	5.0	5.1	6.0	7.0	7.1	7.7	10	0	0.0	5.8	0	0	0	0	0	1030.0	0.0	0.0	1.6			
07	7	05	02	01	97	5.5	72	8.8	2.0	-1.9	4.5	4.5	5.5	6.8	6.9	7.7	10	0	0.0	8.2	0	0	0	0	0	1026.5	0.0	0.0	2.1			
08	0	05	05	02	97	4.6	70	12.6	0.2	-4.5	2.5	2.7	4.4	6.3	6.6	7.6	10	0	tr	8.2	0	0	0	0	0	1014.5	0.0	0.0	1.8			
09	8	18	02	20	97	9.7	77	13.7	4.6	0.5	6.6	6.6	6.5	6.5	6.4	7.5	10	0	0.0	6.7	0	0	0	0	0	1017.0	0.0	0.0	1.7			
10	4	13	05	02	97	11.8	70	15.8	8.0	2.5	7.2	6.8	7.1	7.3	7.0	7.5	10	0	0.0	6.0	0	0	0	0	0	1018.0	0.0	0.0	1.8			
11	8	18	05	02	97	10.4	73	12.9	8.7	5.9	7.7	7.7	8.1	8.0	7.4	7.6	10	0	3.8	0.2	0	0	0	0	0	1004.0	3.4	0.0	0.8			
12	0	18	09	02	97	9.4	76	13.0	7.0	2.2	7.2	7.5	8.0	8.1	7.7	7.7	10	0	2.9	8.0	0	0	0	0	0	1010.0	2.6	0.0	1.6			
13	7	27	02	01	97	9.9	85	12.7	8.4	3.2	8.2	8.2	8.1	8.1	7.8	7.9	10	0	tr	3.3	0	0	0	0	0	1004.5	0.0	0.0	1.0			
14	6	09	02	02	97	6.8	90	14.0	0.8	-2.9	5.1	6.7	7.4	8.4	8.0	8.0	10	0	0.0	8.7	0	0	0	0	0	1023.5	0.0	0.0	1.4			
15	2	09	02	02	97	9.1	83	16.1	3.8	-1.0	6.4	8.4	7.5	8.2	8.1	8.1	10	0	0.6	4.3	0	0	0	0	0	1021.5	0.5	0.0	1.0			
16	8	23	01	05	96	9.8	83	10.6	7.7	2.7	8.4	5.8	8.5	8.5	8.1	8.1	10	0	11.7	0.0	0	0	0	0	0	1018.5	9.5	0.0	0.3			
17	0	00	02	02	97	5.9	84	14.4	0.7	-2.9	5.3	6.6	7.4	8.5	8.2	8.3	20	0	0.0	10.3	0	0	0	0	0	1031.5	0.0	0.0	1.2			
18	0	09	00	41	05	7.6	90	17.1	3.0	-1.5	6.7	7.2	7.5	8.3	8.1	8.3	10	0	0.0	9.3	0	0	0	0	0	1042.5	0.0	0.0	2.1			
19	0	13	05	02	97	10.8	57	15.6	7.2	4.5	7.2	6.0	8.0	8.6	8.3	8.4	10	0	0.0	10.9	0	0	0	0	0	1038.5	0.0	0.0	3.5			
20	0	13	02	02	97	8.4	62	12.9	4.1	-1.0	5.8	4.4	7.5	8.5	8.2	8.5	10	0	0.0	10.2	0	0	0	0	0	1029.0	0.0	0.0	1.4			
21	2	09	02	05	96	6.0	67	17.4	-1.1	-4.2	4.0	7.8	6.3	7.9	8.1	8.5	10	0	0.0	10.2	0	0	0	0	0	1029.0	0.0	5.1	2.1			
22	3	09	02	05	96	12.6	64	20.4	6.0	2.6	8.1	6.5	8.1	8.2	8.0	8.4	10	0	0.0	9.9	0	0	0	0	0	1029.0	0.0	0.0	2.2			
23	0	09	02	02	97	10.8	73	20.1	2.9	-1.0	6.3	6.4	7.9	8.6	8.3	8.5	03	0	0.0	10.5	0	0	0	0	0	1030.5	0.0	0.0	2.3			
24	0	31	02	02	97	8.8	80	20.2	1.1	-2.4	6.2	6.2	7.5	8.6	8.4	8.5	03	0	0.0	10.7	0	0	0	0	0	1031.0	0.0	0.0	2.8			
25	0	00	00	02	97	10.8	66	19.0	1.6	-2.0	6.1	6.5	7.7	8.8	8.6	8.6	03	0	0.0	10.4	0	0	0	0	0	1032.5	0.0	0.0	2.7			
26	0	05	05	02	97	11.9	61	19.2	2.9	-1.1	6.6	7.7	7.8	8.8	8.6	8.7	03	0	0.0	10.9	0	0	0	0	0	1034.0	0.0	0.0	2.7			
27	8	09	02	42	08	7.3	97	12.6	5.7	1.7	7.6	7.7	8.7	9.1	8.7	8.7	03	0	0.0	0.8	0	0	0	0	0	1033.0	0.0	0.0	0.6			
28	0	05	02	05	96	7.1	96	16.5	0.5	-2.4	5.5	5.9	7.6	8.8	8.7	8.8	03	0	0.1	5.7	0	0	0	0	0	1024.5	0.1	0.0	2.2			
29	7	09	02	02	97	9.8	81	12.0	7.1	6.8	8.9	9.0	9.5	9.4	8.7	8.8	03	0	0.1	0.1	0	0	0	0	0	1013.0	0.2	0.0	1.2			
30	8	05	05	02	96	7.2	88	9.1	7.1	6.2	8.4	8.8	9.3	9.4	9.0	8.9	03	0	tr	0.0	0	0	0	0	0	1008.0	0.0	0.0	1.1			
31	6	05	09	03	97	3.4	82	8.6	0.9	-1.4	5.3	5.6	7.6	8.9	8.8	8.9	03	0	tr	6.1	5	0	4	0	0	1010.0	0.0	0.0	1.8			
Monthly means						8.2	78	13.5	4.3	0.9	6.5	6.6	7.4	8.1	7.8	8.1											1023.0					
Monthly totals																																
Highest values						12.6		20.4	8.7	6.8	8.9	9.0	9.5	9.4	9.0	8.9												15.1	5.1	3.5		
Lowest values																																
1991-2020 monthly climatological average						3.4	57	7.5	-1.1	-4.5	2.5	2.7	4.4	6.3	6.4	7.5																
						83	12.1	3.7	0.8	5.9	5.9	6.8	7.3	7.0	7.3												42.4	122.1				

Key  
 DD: date  
 07GMT observations:  
 N cloud cover (oktas, 9=obscured) dd wind direction (degrees/10)  
 ff wind speed (knots)  
 ww present weather code  
 1 cloud decreasing 21 recent rain  
 2 sky not changing 60 intermittent slight rain  
 3 cloud increasing 61 continuous slight rain  
 5 haze 71 continuous slight snow  
 VV visibility (00-50 metres/100, 94 very poor, 95 poor, 96 moderate, 97 good)  
 Soil temperatures are for 0700GMT beneath bare soil (5, 10, 20cm) or grass (30, 50, 100cm)  
 09GMT observations:  
 Temp temperature (degC) RH relative humidity (%)  
 E state of ground (X1,X2 slight snow, 00 dry, 10 moist, 20 wet, 40 frozen, 90 cracked)  
 Press air pressure (mb) SS snow depth (cm)  
 24 hour readings:  
 Max maximum temperature (degC) beginning 09GMT Min minimum temperature (degC) ending 09GMT  
 Gmin grass minimum temperature (degC) ending 09GMT Rain precipitation beginning 09GMT  
 Sun sunshine (hours) sunrise-sunset Rain hrs hours of rainfall (>0.1mm/h) 09-09GMT  
 Fr. Hrs hours of air frost (00-24GMT) Pch Evap Piche evaporation (ml) beginning 09GMT  
 Days with  
 S snow(5) or sleet(1) falling L 50% snow cover at 09GMT H hail or ice pellets  
 T thunder heard G gale F fog at 09GMT

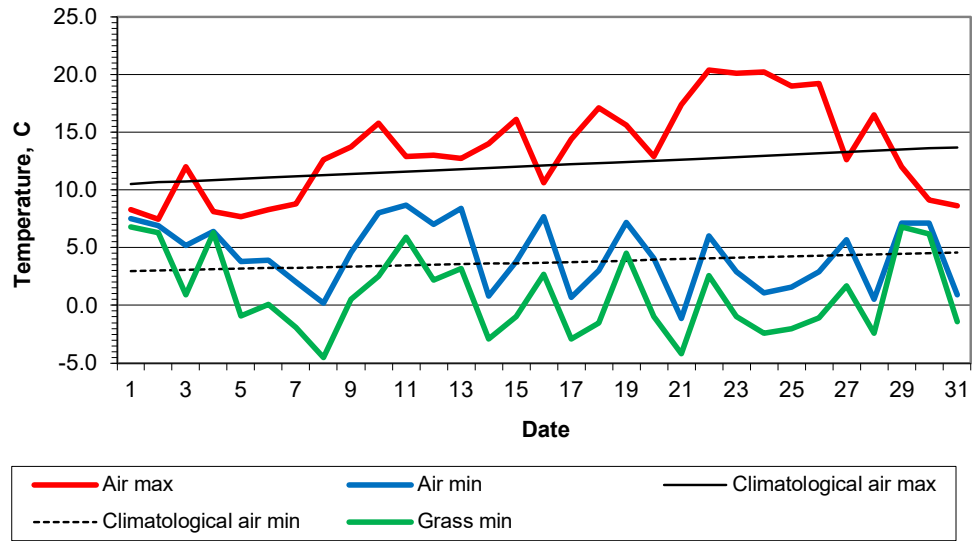
**Daily soil temperatures, 0700GMT**



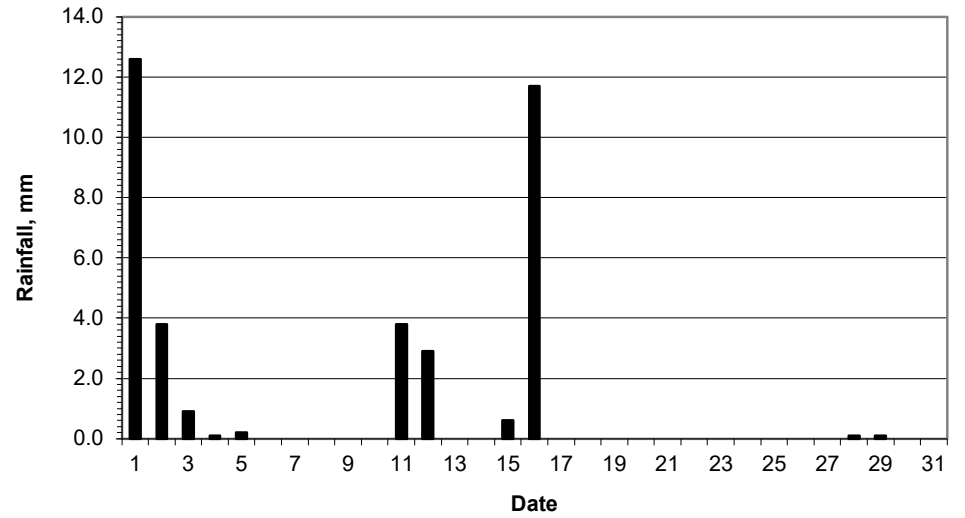
**Mean sea level pressure, 0900GMT**



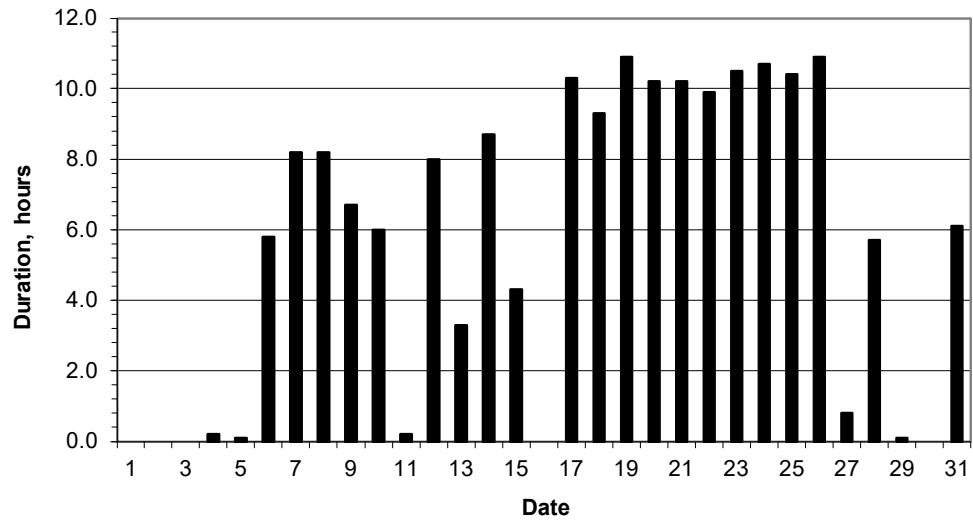
### Daily temperature extremes



### Daily rainfall



### Daily sunshine



### Daily evaporation

