

MAIDENHEAD METEOROLOGICAL OBSERVATIONS FOR JUNE 2023

DD	N	dd	ff	ww	VV	0900GMT		Temperature			Soil temperatures (depth in cm)						E	SS	Rain	Sun	S	L	H	T	G	F	Press	Rain hrs	Fr. hrs	Pch Evap			
						Temp	RH	Max	Min	Gmin	5	10	20	30	50	100																	
01	8	05	05	02	97	12.0	75	20.0	9.6	10.0	14.2	14.5	15.2	15.1	14.5	13.3	90	0	0.0	7.2	0	0	0	0	0	0	1026.5	0.0	0.0	2.4	Number of		
02	8	05	09	02	97	12.4	64	20.0	10.7	10.0	13.8	14.1	14.7	14.7	14.2	13.2	90	0	0.0	9.5	0	0	0	0	0	1025.5	0.0	0.0	2.6	days with			
03	7	05	05	02	97	15.8	67	23.0	7.4	4.3	13.7	13.8	14.4	14.6	14.2	13.2	90	0	0.0	12.4	0	0	0	0	0	1024.0	0.0	0.0	2.9	2023 normal			
04	0	05	05	02	97	18.4	52	23.8	9.3	6.0	13.6	14.3	15.2	15.2	14.5	13.3	90	0	0.0	15.0	0	0	0	0	0	1024.0	0.0	0.0	3.6	Snow/sleet falling			
05	8	05	05	02	97	12.4	72	19.5	9.8	6.5	14.5	15.1	15.8	15.6	14.8	13.3	90	0	0.0	6.7	0	0	0	0	0	1025.5	0.0	0.0	2.4	0 0.0			
06	8	05	02	02	97	12.8	71	17.5	11.4	9.5	14.3	14.6	15.1	15.0	14.5	13.5	90	0	0.0	1.0	0	0	0	0	0	1024.0	0.0	0.0	1.9	50% snow cover 09GMT			
07	8	09	05	02	97	13.0	75	22.5	10.8	9.0	14.1	14.4	14.8	14.6	14.2	13.5	90	0	0.0	9.8	0	0	0	0	0	1023.0	0.0	0.0	2.5	0 0.0			
08	7	09	02	01	97	15.5	67	23.9	10.1	7.6	14.8	15.0	15.4	15.1	14.5	13.4	90	0	0.0	12.3	0	0	0	0	0	1020.0	0.0	0.0	3.2	Hail or ice pellets			
09	7	09	05	02	97	18.9	65	27.3	11.5	9.2	15.6	15.9	16.2	15.7	14.9	13.5	90	0	0.0	12.3	0	0	0	0	0	1014.5	0.0	0.0	3.4	1 0.2			
10	1	05	05	02	97	23.6	62	31.8	13.4	11.0	16.4	16.9	17.4	16.6	15.5	13.6	90	0	0.0	13.7	0	0	0	0	0	1013.5	0.0	0.0	5.1	Thunder			
11	4	09	02	02	97	25.1	52	31.2	15.5	12.1	17.8	18.2	18.6	17.6	16.2	13.9	90	0	6.0	7.2	0	0	0	1	0	1014.0	0.9	0.0	2.1	3 1.5			
12	7	23	02	02	97	23.8	76	29.5	17.1	15.0	18.3	18.9	18.9	18.1	16.7	14.2	10	0	19.8	7.3	0	0	5	1	0	1014.5	0.4	0.0	2.0	Gale			
13	0	00	02	02	97	21.8	64	29.4	12.6	10.5	16.6	17.0	18.4	18.3	17.2	14.6	20	0	0.0	15.2	0	0	0	0	0	1013.5	0.0	0.0	5.1	0 0.0			
14	0	36	09	02	97	22.9	58	29.2	11.0	8.5	15.6	16.5	17.8	18.1	17.3	14.9	10	0	0.0	13.7	0	0	0	0	0	1017.5	0.0	0.0	4.0	Fog at 09GMT			
15	3	05	02	02	97	24.0	56	28.2	13.6	10.8	16.7	17.4	18.4	18.3	17.4	15.0	03	0	0.0	13.5	0	0	0	0	0	1020.5	0.0	0.0	4.3	0 0.0			
16	0	09	05	02	97	23.7	43	28.1	13.8	10.6	17.3	18.0	19.0	18.5	17.6	15.1	90	0	0.0	13.7	0	0	0	0	0	1020.0	0.0	0.0	4.6	Air frost			
17	7	09	02	01	97	19.7	54	26.8	13.7	10.7	18.0	18.5	19.4	18.7	17.7	15.4	90	0	tr	4.6	0	0	0	0	0	1014.5	0.0	0.0	3.7	0 0.0			
18	8	09	02	25	97	22.0	71	27.0	16.8	14.6	19.4	19.5	18.9	18.8	17.7	15.5	00	0	1.0	2.8	0	0	0	0	0	1009.0	2.2	0.0	2.0	Ground frost			
19	4	23	02	02	97	21.5	67	25.9	13.6	11.1	18.3	18.4	19.0	18.6	17.8	15.6	10	0	10.2	11.5	0	0	0	1	0	1011.0	2.0	0.0	3.3	0 0.0			
20	8	13	02	29	97	19.7	94	23.0	16.4	14.0	18.3	18.9	19.5	19.0	18.0	15.8	20	0	0.1	4.4	0	0	0	0	0	1006.0	0.1	0.0	1.7	0.2mm precipitation			
21	5	23	02	02	97	20.3	73	25.6	13.8	11.6	17.8	18.0	18.7	18.6	17.8	15.9	10	0	0.0	11.2	0	0	0	0	0	1016.5	0.0	0.0	3.0	7 11.2			
22	1	27	02	02	97	24.0	65	28.3	13.2	10.3	17.4	18.0	18.9	18.9	18.0	16.0	10	0	0.5	11.2	0	0	0	0	0	1018.5	0.3	0.0	2.7	1.0mm precipitation			
23	7	23	02	02	97	21.0	75	27.6	15.2	12.8	18.6	19.0	19.4	19.2	18.2	16.1	10	0	0.0	11.7	0	0	0	0	0	1024.0	0.0	0.0	3.2	5 8.4			
24	7	00	00	02	97	23.0	73	28.4	15.5	13.0	19.4	18.5	19.9	19.5	18.5	16.1	00	0	0.0	5.8	0	0	0	0	0	1024.5	0.0	0.0	3.0	5.0mm precipitation			
25	0	09	02	02	97	26.2	52	31.2	14.8	12.2	18.4	19.0	20.0	19.5	18.6	16.3	03	0	tr	14.0	0	0	0	0	0	1014.0	0.0	0.0	4.8	3 3.5			
26	2	27	05	02	97	20.2	54	23.5	12.8	10.0	18.2	19.0	20.0	19.9	18.9	16.5	90	0	0.0	9.8	0	0	0	0	0	1020.0	0.0	0.0	3.2	No sunshine			
27	7	23	02	02	97	19.7	69	22.6	14.2	11.0	18.4	18.9	19.5	19.2	18.5	16.6	90	0	tr	0.6	0	0	0	0	0	1022.0	0.0	0.0	2.2	0 1.7			
28	8	23	02	02	96	19.8	88	24.6	18.0	16.3	19.3	19.6	19.9	19.0	18.2	16.6	90	0	4.3	0.4	0	0	0	0	0	1018.0	4.7	0.0	1.6	The warmest June locally			
29	8	31	02	21	97	16.4	94	23.4	14.9	14.7	18.2	18.0	19.5	19.0	18.2	16.6	10	0	0.0	9.1	0	0	0	0	0	1017.0	0.0	0.0	2.6	since before 1953, although			
30	7	23	02	01	97	17.5	69	18.9	10.3	7.9	16.2	17.0	18.2	18.7	18.1	16.6	10	0	0.8	0.1	0	0	0	0	0	1014.0	0.1	0.0	1.6	30C was reached on only 3			
Monthly means						19.6	67	25.4	13.0	10.7	16.8	17.2	17.9	17.6	16.7	14.9											1018.3				and 6 days in June 1976 at		
Monthly totals																															of normal but measurable		
Highest values																																falls were on only 8 days -	
Lowest values						26.2		31.8	18.0	16.3	19.4	19.6	20.0	19.9	18.9	16.6																	including a thunderstorm on
1991-2020 monthly climatological averages						12.0	43	17.5	7.4	4.3	13.6	13.8	14.4	14.6	14.2	13.2																	the 12th that led to local
						72	21.5	11.5	9.7	15.3	15.6	16.4	16.3	15.4	14.1																	flooding after 19.8 mm fell	
																																	in about 25 minutes. It was
																																	a sunny month - the
																																	sunniest since May 2020.

Key

DD: date

07GMT observations

N cloud cover (oktas, 9=obscured) dd wind direction (degrees/10)
ff wind speed (knots)
ww present weather code
1 cloud decreasing 60 intermittent light rain
2 sky not changing 61 continuous slight rain
3 cloud increasing
5 haze

VV visibility (00-50 metres/100, 94 very poor, 95 poor, 96 moderate, 97 good)

Soil temperatures are for 0700GMT beneath bare soil (5, 10, 20cm) or grass (30, 50, 100cm)

09GMT observations

Temp temperature (degC) RH relative humidity (%)
E state of ground (00 dry, 10 moist, 20 wet, 90 cracked) SS snow depth (cm)
Press air pressure (mb)

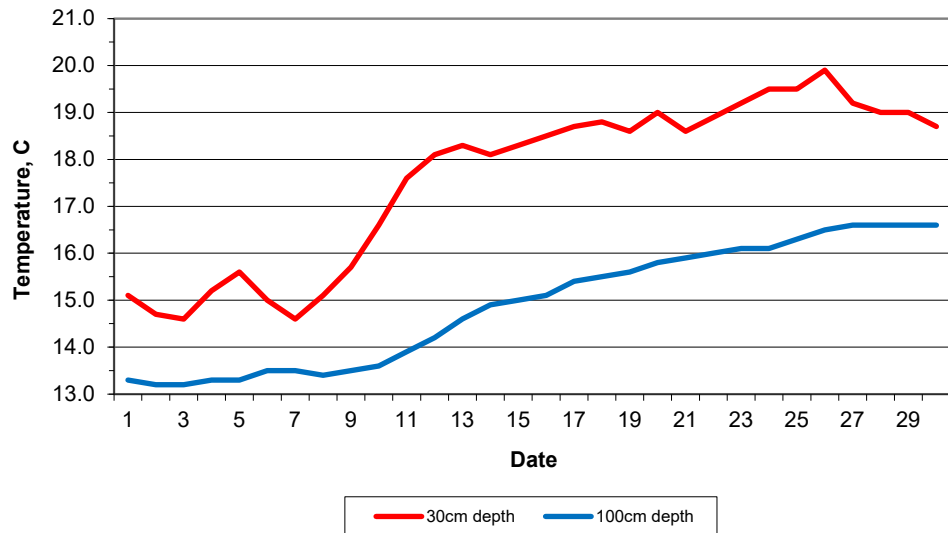
24 hour readings

Max maximum temperature (degC) beginning 09GMT Min minimum temperature (degC) ending 09GMT
Gmin grass minimum temperature (degC) ending 09GMT Rain precipitation beginning 09GMT
Sun sunshine (hours) sunrise-sunset Rain hrs hours of rainfall (>0.1mm/h) 09-09GMT
Fr. Hrs hours of air frost (00-24GMT) Pch Evap Piche evaporation (ml) beginning 09GMT

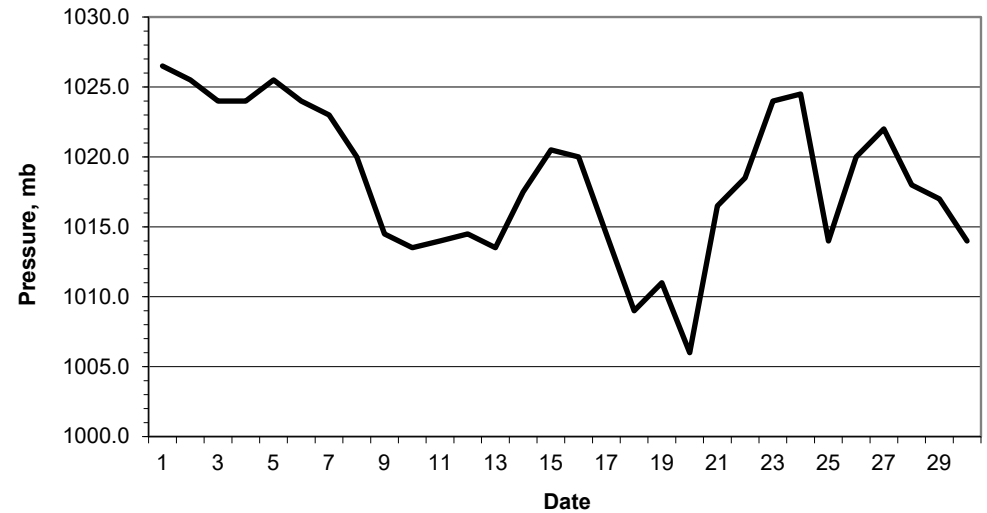
Days with

S snow(5) or sleet(1) falling L 50% snow cover at 09GMT H hail or ice pellets
T thunder heard G gale F fog at 09GMT

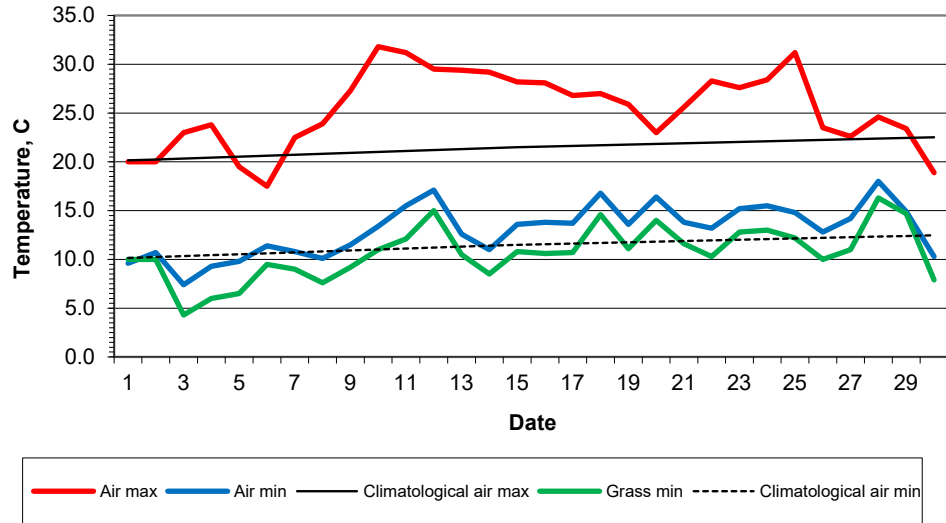
Daily soil temperatures, 0700GMT



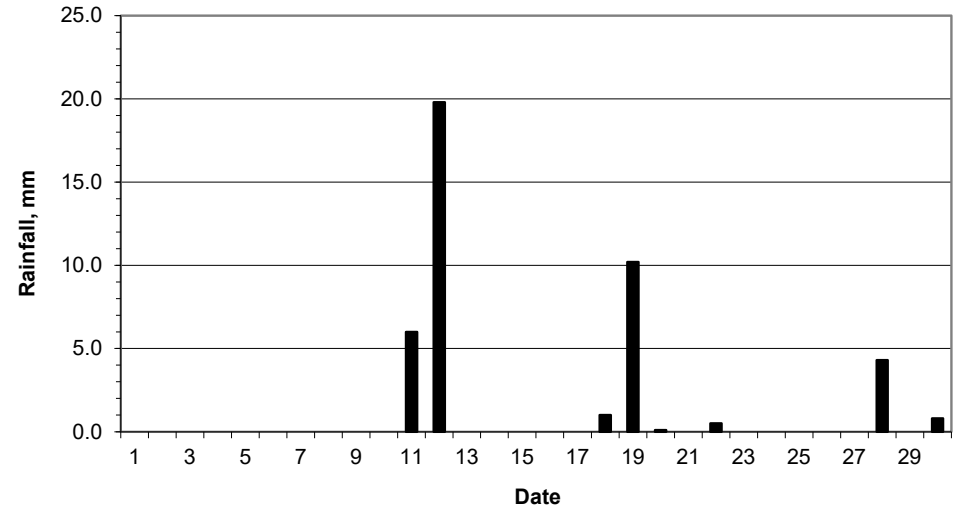
Mean sea level pressure, 0900GMT



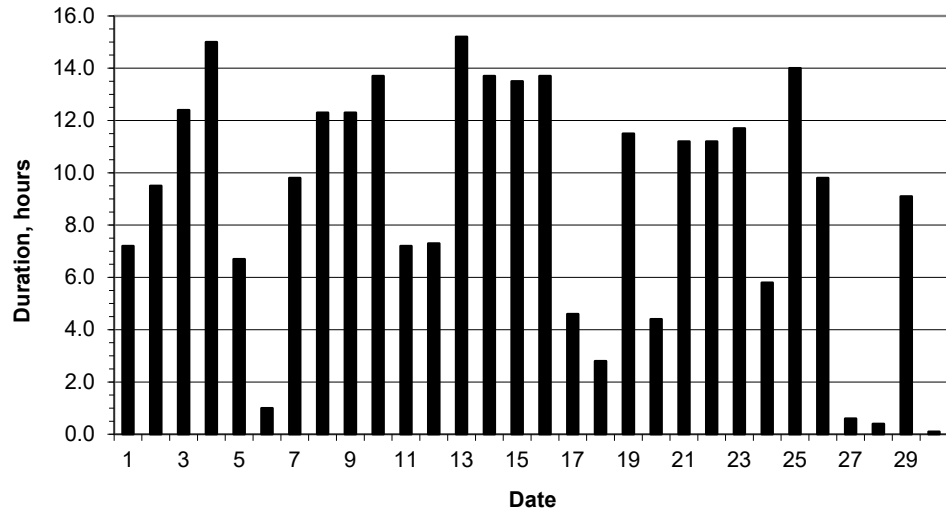
Daily temperature extremes



Daily rainfall



Daily sunshine



Daily evaporation

