

MAIDENHEAD METEOROLOGICAL OBSERVATIONS FOR JULY 2022

DD	N	dd	ff	ww	VV	0900GMT		Temperature				Soil temperatures (depth in cm)						E	SS	Rain	Sun	S	L	H	T	G	F	Press	Rain hrs	Fr. hrs	Pch Evap	
						Temp	RH	Max	Min	Gmin	5	10	20	30	50	100																
01	7	23	02	02	97	17.8	70	21.8	11.0	8.7	14.6	14.9	15.8	16.4	16.1	15.3	10	0	tr	4.9	0	0	0	0	0	0	1016.0	0.0	0.0	2.4	Number of days with 2022 normal Snow/sleet falling 0 0.0 50% snow cover 09GMT 0 0.0 Hail or ice pellets 0 0.1 Thunder 0 2.1 Gale 0 0.0 Fog at 09GMT 0 0.0 Air frost 0 0.0 Ground frost 0 0.0 0.2mm precipitator 4 11.7 1.0mm precipitator 2 8.1 5.0mm precipitator 0 3.1 No sunshine 0 1.2 With no measurable rain from the 3rd to the 19th, it was the driest July since 1993 when 5.7 mm fell and also the fifth driest July locally since records began in 1859. Only 220.3 mm of rain has fallen since the start of 2022 - the lowest January-July total since 178.3 mm in 1976. However, in 1921 only 134.2 mm fell. It was the warmest July only since 2018 - which was 0.9 degC warmer.	
02	7	23	05	02	97	17.9	68	22.1	10.9	7.9	14.6	14.9	15.6	16.4	16.0	15.3	10	0	1.9	5.8	0	0	0	0	0	1019.0	1.3	0.0	1.9			
03	6	27	02	02	97	17.2	75	23.5	9.5	7.2	14.5	14.7	16.0	16.6	16.1	15.4	10	0	0.0	11.0	0	0	0	0	0	1019.5	0.0	0.0	2.3			
04	2	27	02	02	97	18.9	59	22.2	10.5	8.1	14.9	15.5	16.5	16.9	16.2	15.4	03	0	0.0	8.8	0	0	0	0	0	1021.5	0.0	0.0	2.5			
05	3	31	05	03	97	20.3	55	23.2	8.6	6.1	14.2	14.7	16.2	16.9	16.4	15.4	03	0	0.0	8.9	0	0	0	0	0	1025.0	0.0	0.0	2.7			
06	8	27	05	02	97	19.5	72	24.2	10.7	8.2	16.3	16.6	17.1	16.9	16.3	15.4	03	0	0.0	3.0	0	0	0	0	0	1028.0	0.0	0.0	2.8			
07	8	31	09	02	97	18.0	72	24.8	16.6	14.0	17.6	17.8	18.0	17.2	16.5	15.5	90	0	0.0	8.2	0	0	0	0	0	1029.0	0.0	0.0	2.9			
08	0	36	02	02	97	22.7	62	28.6	13.0	9.8	15.9	16.2	17.3	17.3	16.6	15.5	90	0	0.0	14.0	0	0	0	0	0	1033.0	0.0	0.0	4.0			
09	7	36	05	02	97	20.5	62	27.3	15.1	11.0	18.2	18.3	18.8	18.0	17.1	15.6	90	0	0.0	12.5	0	0	0	0	0	1031.5	0.0	0.0	3.7			
10	0	05	02	02	97	21.9	62	29.8	14.1	10.4	17.6	18.3	18.9	18.4	17.5	15.8	90	0	0.0	14.5	0	0	0	0	0	1028.5	0.0	0.0	4.0			
11	1	23	02	02	97	25.1	50	31.9	14.6	10.9	18.4	18.8	19.5	19.0	17.9	16.1	90	0	0.0	12.0	0	0	0	0	0	1024.0	0.0	0.0	4.6			
12	7	09	02	02	97	24.3	58	30.6	17.9	13.7	20.6	20.7	21.0	19.7	18.5	16.2	90	0	tr	1.1	0	0	0	0	0	1022.5	0.0	0.0	4.0			
13	6	36	05	02	97	24.3	61	28.2	20.5	17.3	21.1	21.2	21.5	20.0	18.7	16.5	90	0	0.0	8.0	0	0	0	0	0	1022.0	0.0	0.0	4.2			
14	1	36	05	02	97	21.2	49	25.9	14.2	10.0	18.4	19.2	20.4	19.9	19.0	16.8	90	0	0.0	14.0	0	0	0	0	0	1023.0	0.0	0.0	4.0			
15	2	31	05	02	97	20.8	52	26.9	11.2	7.3	17.3	17.8	19.3	19.5	18.8	17.0	90	0	0.0	13.0	0	0	0	0	0	1025.0	0.0	0.0	3.7			
16	2	36	02	02	97	20.9	56	28.3	12.1	7.4	17.8	18.3	19.7	19.5	18.8	17.0	90	0	0.0	13.6	0	0	0	0	0	1025.5	0.0	0.0	3.8			
17	2	18	02	02	97	24.7	51	30.2	14.6	9.2	18.4	19.3	20.2	19.8	19.0	17.1	90	0	0.0	12.6	0	0	0	0	0	1026.0	0.0	0.0	5.1			
18	1	18	02	02	97	27.4	40	36.4	15.3	9.6	19.1	19.7	20.6	20.1	19.1	17.2	90	0	0.0	12.6	0	0	0	0	0	1020.0	0.0	0.0	6.6			
19	3	09	05	02	97	31.8	30	38.7	18.6	13.8	20.7	21.3	21.9	21.0	19.7	17.4	90	0	0.0	10.6	0	0	0	0	0	1011.5	0.0	0.0	7.6			
20	8	23	05	02	97	21.8	72	25.4	19.5	17.5	22.4	22.7	23.0	21.8	20.5	17.6	90	0	4.9	2.2	0	0	0	0	0	1016.5	1.9	0.0	2.2			
21	7	31	05	03	97	21.8	71	23.7	14.8	13.5	19.2	19.6	20.9	21.0	20.2	17.9	10	0	0.3	1.4	0	0	0	0	0	1022.0	0.3	0.0	2.8			
22	7	09	09	02	97	20.7	61	22.5	17.5	15.7	18.8	19.3	20.1	20.4	19.7	18.0	90	0	tr	2.3	0	0	0	0	0	1020.0	0.0	0.0	2.7			
23	6	23	05	02	97	20.9	61	26.1	15.0	11.6	18.4	18.7	19.5	19.9	19.3	18.0	90	0	0.0	8.4	0	0	0	0	0	1019.0	0.0	0.0	3.4			
24	8	23	09	02	97	23.3	61	28.2	18.0	15.6	20.0	20.5	20.9	20.3	19.6	17.9	90	0	0.0	9.2	0	0	0	0	0	1014.5	0.0	0.0	4.5			
25	6	23	09	02	97	19.7	65	23.3	17.3	14.1	20.3	20.7	21.2	20.9	19.9	18.0	90	0	0.4	0.5	0	0	0	0	0	1009.0	0.3	0.0	2.5			
26	8	31	02	02	97	16.5	80	21.6	14.6	13.4	18.8	19.4	19.9	20.0	19.6	18.0	03	0	0.0	1.5	0	0	0	0	0	1020.0	0.0	0.0	1.8			
27	6	13	05	02	97	20.2	65	23.0	12.8	9.9	17.6	17.8	18.6	19.3	19.1	18.0	90	0	0.0	4.1	0	0	0	0	0	1021.0	0.0	0.0	3.3			
28	7	09	02	02	97	21.0	50	24.9	16.1	14.0	18.3	18.5	19.1	19.1	18.7	17.9	90	0	0.0	6.5	0	0	0	0	0	1017.0	0.0	0.0	4.3			
29	7	09	02	01	97	21.5	56	27.1	14.2	10.6	18.4	18.8	19.5	19.4	18.8	17.8	90	0	0.0	7.7	0	0	0	0	0	1019.0	0.0	0.0	3.8			
30	7	27	05	03	97	21.4	61	25.7	15.6	12.6	19.4	19.8	20.5	20.0	19.3	17.9	90	0	tr	1.4	0	0	0	0	0	1019.0	0.0	0.0	2.8			
31	8	23	05	02	97	21.4	75	27.5	19.9	18.0	20.6	21.1	21.1	20.3	19.5	17.9	90	0	tr	2.3	0	0	0	0	0	1015.5	0.0	0.0	2.6			
Monthly means						21.5	61	26.6	14.7	11.5	18.1	18.6	19.3	19.1	18.3	16.8											1021.4					
Monthly totals																				7.5	236.6							3.8	0.0	109.5		
Highest values						31.8		38.7	20.5	18.0	22.4	22.7	23.0	21.8	20.5	18.0			4.9	14.5								1.9	0.0	7.6		
Lowest values						16.5	30	21.6	8.6	6.1	14.2	14.7	15.6	16.4	16.0	15.3																
1991-2020 monthly climatological averages						72	23.6	13.5	11.7	17.1	17.4	18.3	18.2	17.5	16.1			50.0	199.7									1015.4	31.2	0.0	78.4	

Key

DD: date

07GMT observations

N	cloud cover (oktas, 9=obscured)	dd	wind direction (degrees/10)
ff	wind speed (knots)		
ww	present weather code		
1	cloud decreasing	25	recent rain shower
2	sky not changing	51	intermittent slight drizzle
3	cloud increasing	60	intermittent slight rain
21	recent rain	80	light rain shower
VV	visibility (00-50 metres/100, 94 very poor, 95 poor, 96 moderate, 97 good)		

Soil temperatures are for 0700GMT beneath bare soil (5, 10, 20cm) or grass (30, 50, 100cm)

09GMT observations

Temp	temperature (degC)	RH	relative humidity (%)
E	state of ground (00 dry, 10 moist, 20 wet, 90 cracked)	SS	snow depth (cm)
Press	air pressure (mb)		

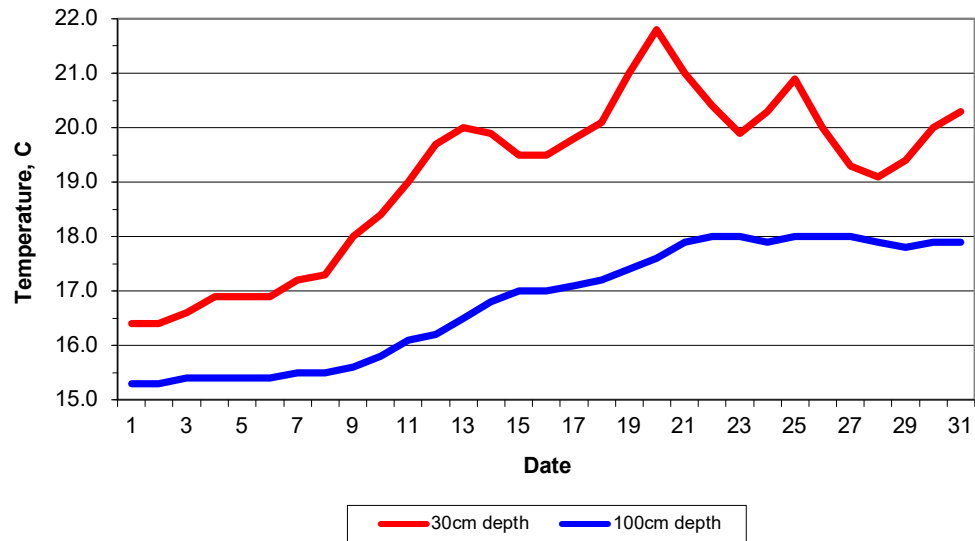
24 hour readings

Max	maximum temperature (degC) beginning 09GMT	Min	minimum temperature (degC) ending 09GMT
Gmin	grass minimum temperature (degC) ending 09GMT	Rain	precipitation beginning 09GMT
Sun	sunshine (hours) sunrise-sunset	Rain hrs	hours of rainfall (>0.1mm/h) 09-09GMT
Fr. Hrs	hours of air frost (00-24GMT)	Pch Evap	Piche evaporation (ml) beginning 09GMT

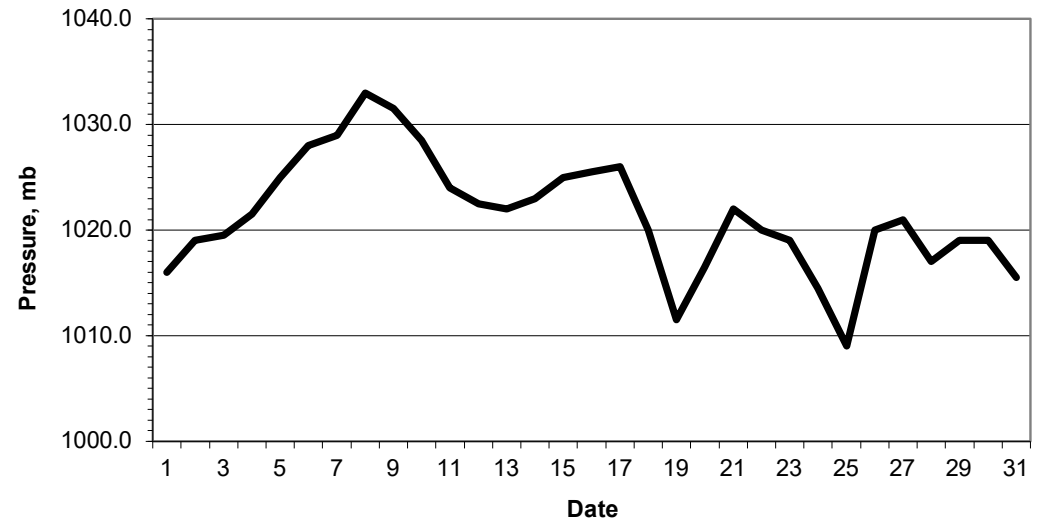
Days with

S	snow(5) or sleet(1) falling	L	50% snow cover at 09GMT	H	hail or ice pellets
T	thunder heard	G	gale	F	fog at 09GMT

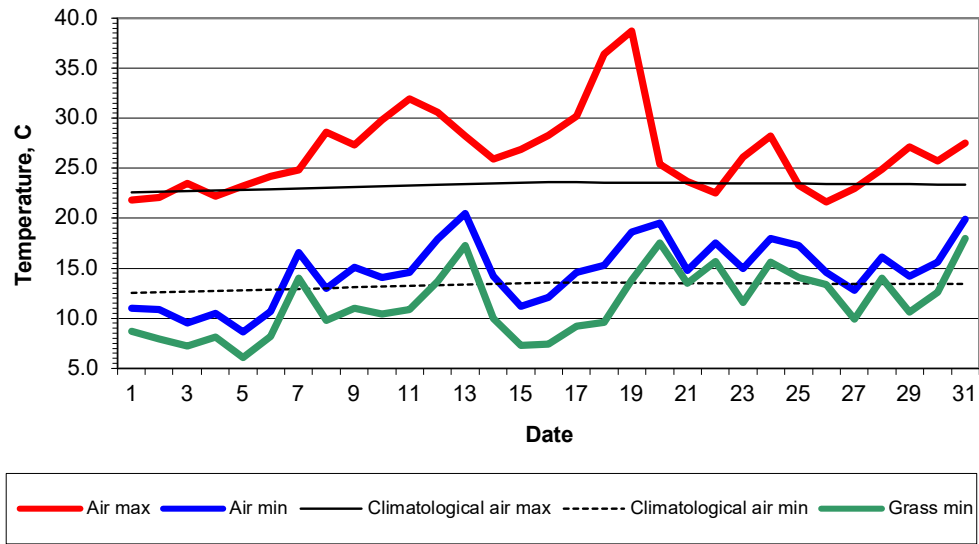
Daily soil temperatures, 0700GMT



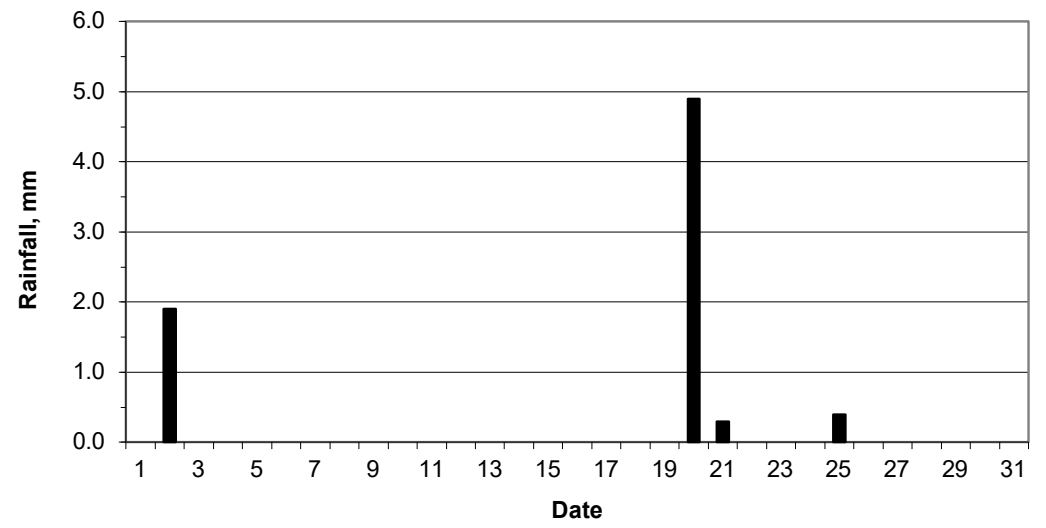
Mean sea level pressure, 0900GMT



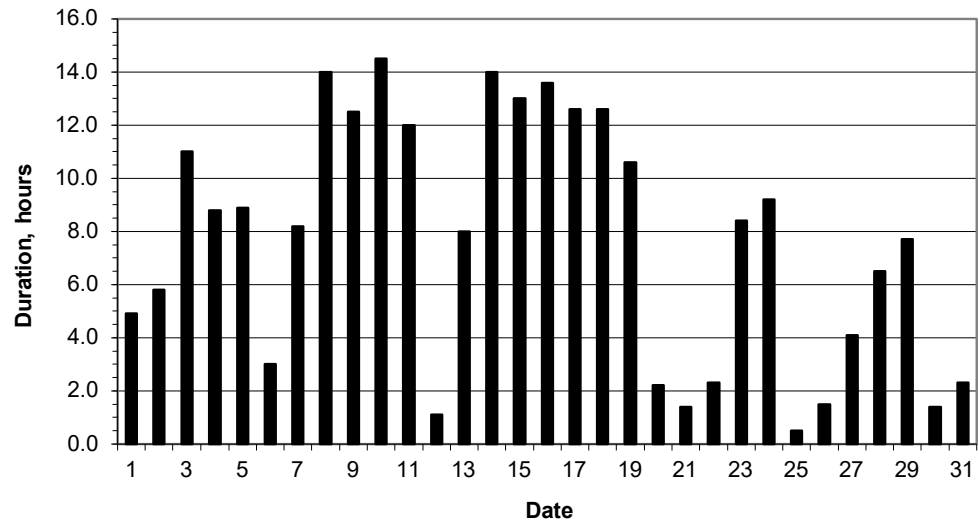
Daily temperature extremes



Daily rainfall



Daily sunshine



Daily evaporation

