

MAIDENHEAD METEOROLOGICAL OBSERVATIONS FOR JANUARY 2024

DD	N	dd	ff	ww	VV	0900GMT		Temperature				Soil temperatures (depth in cm)						E	SS	Rain	Sun	S	L	H	T	G	F	Press	Rain hrs	Fr. hrs	Pch Evap		
						Temp	RH	Max	Min	Gmin	5	10	20	30	50	100																	
01	8	23	02	02	97	5.9	80	11.9	5.9	1.7	6.2	7.0	7.7	8.5	8.6	9.5	10	0	10.1	0.3	0	0	0	0	0	0	1004.0	8.2	0.0	0.9			
02	8	23	02	61	94	11.0	88	13.1	5.9	2.0	8.8	8.9	8.6	8.6	8.5	9.5	20	0	4.3	0.2	0	0	0	0	0	0	986.0	3.5	0.0	1.2			
03	5	23	05	02	97	9.1	81	11.5	8.5	4.6	7.4	8.0	8.5	9.0	8.7	9.5	20	0	1.8	2.5	0	0	0	0	0	0	989.5	0.2	0.0	0.6			
04	3	23	02	02	97	4.9	89	7.9	4.3	-0.5	6.1	6.9	8.0	8.8	8.7	9.4	20	0	20.2	0.0	0	0	0	0	0	0	1003.5	11.8	0.0	0.4			
05	7	31	02	02	97	4.6	91	7.4	4.6	1.2	5.8	6.5	7.2	8.1	8.3	9.5	20	0	0.7	0.4	0	0	0	0	0	0	1001.5	0.9	0.0	0.3			
06	7	31	02	01	97	5.1	89	6.7	4.6	2.5	6.3	6.9	7.3	8.0	8.1	9.4	20	0	tr	1.8	0	0	0	0	0	0	1016.5	0.0	0.0	0.6			
07	7	36	05	02	97	3.3	74	5.2	2.7	-1.5	4.3	5.0	6.0	7.4	7.8	9.3	20	0	0.0	5.1	0	0	0	0	0	0	1027.0	0.0	0.0	1.6			
08	7	05	05	02	97	3.1	55	3.7	1.7	-1.9	2.8	3.6	4.9	6.6	7.2	9.1	10	0	tr	0.0	5	0	0	0	0	0	1033.0	0.0	0.0	1.4			
09	7	05	05	02	97	2.0	60	4.3	2.0	0.0	2.4	3.1	4.3	5.7	6.6	8.9	10	0	0.0	4.9	0	0	0	0	0	0	1032.0	0.0	0.0	1.3			
10	0	05	05	02	97	1.6	65	5.1	0.3	-4.1	0.9	2.0	3.3	5.0	6.1	8.6	40	0	0.0	6.1	0	0	0	0	0	0	1030.0	0.0	0.0	1.1			
11	0	36	02	02	97	1.0	83	5.8	0.1	-4.2	1.0	1.9	3.0	4.6	5.5	8.3	40	0	tr	2.4	0	0	0	0	0	0	1037.0	0.0	0.0	0.7			
12	8	05	05	02	97	5.3	78	6.0	1.0	-3.9	4.0	4.4	4.6	5.0	5.4	8.0	10	0	0.0	0.0	0	0	0	0	0	0	1037.5	0.0	0.0	0.6			
13	8	31	02	05	95	1.6	77	4.9	1.3	0.5	3.6	4.0	4.6	5.5	5.7	7.9	10	0	tr	0.0	0	0	0	0	0	0	1027.5	0.0	0.0	0.5			
14	6	23	02	03	97	2.1	82	6.7	1.2	-2.8	3.7	4.1	4.6	5.5	5.7	7.8	10	0	0.0	2.7	0	0	0	0	0	0	1015.0	0.0	0.0	0.7			
15	0	31	02	02	97	-1.1	79	3.2	-1.9	-6.6	1.1	2.1	3.6	5.2	5.6	7.7	40	0	0.0	7.1	0	0	0	0	0	0	1011.0	0.0	16.1	0.5			
16	1	18	02	02	97	-5.4	77	4.0	-5.7	-8.5	0.1	1.0	1.9	4.0	5.0	7.6	40	0	0.0	6.4	0	0	0	0	0	0	1010.5	0.0	17.6	1.0			
17	8	05	02	02	97	-0.3	77	2.8	-5.4	-8.0	0.1	0.9	1.9	3.4	4.3	7.4	40	0	0.0	0.0	0	0	0	0	0	0	991.5	0.0	13.3	0.2			
18	0	27	02	02	97	-6.9	72	2.9	-7.1	-10.1	-0.3	0.6	1.2	3.1	4.1	7.1	40	0	0.0	7.1	0	0	0	0	0	0	1005.0	0.0	17.3	0.0			
19	0	23	02	02	97	-5.8	77	5.2	-6.9	-9.6	-1.1	0.0	1.2	2.7	3.6	6.8	40	0	0.0	7.0	0	0	0	0	0	0	1022.0	0.0	17.2	0.2			
20	7	23	02	03	97	2.2	78	9.4	-5.8	-8.3	-0.6	0.0	1.0	2.5	3.4	6.5	40	0	2.0	0.0	0	0	0	0	0	0	1024.5	2.3	7.0	1.2			
21	3	23	02	20	97	9.4	90	12.7	2.2	-1.5	-0.5	0.5	1.2	2.5	3.1	6.3	10	0	12.5	0.0	0	0	0	0	0	0	1012.5	5.6	0.0	1.3			
22	6	27	09	02	97	8.2	76	10.8	8.2	4.0	5.6	6.0	5.7	4.7	4.1	6.2	10	0	0.4	5.4	0	0	0	0	0	0	1007.0	0.5	0.0	1.4			
23	8	23	02	60	97	7.3	88	13.1	3.4	-2.8	3.9	4.0	4.4	5.0	4.8	6.3	10	0	3.9	0.0	0	0	0	0	0	0	1022.0	1.5	0.0	1.1			
24	7	27	09	02	97	9.5	71	11.8	7.3	5.0	6.1	6.5	6.6	6.0	5.5	6.5	10	0	0.1	4.3	0	0	0	0	0	0	1023.5	0.1	0.0	0.4			
25	8	18	02	02	96	8.7	92	13.1	3.2	-1.2	5.6	5.6	5.8	6.3	5.9	6.7	10	0	2.1	1.0	0	0	0	0	0	0	1026.0	1.1	0.0	0.9			
26	0	27	09	02	97	6.4	67	9.7	6.3	2.9	6.7	7.5	7.6	7.1	6.3	6.9	10	0	0.0	7.7	0	0	0	0	0	0	1027.0	0.0	0.0	1.0			
27	7	00	00	02	97	-0.8	84	8.6	-1.9	-5.5	2.1	3.0	4.4	6.1	6.3	7.1	10	0	0.0	2.3	0	0	0	0	0	0	1034.5	0.0	7.7	0.3			
28	6	13	02	02	97	2.4	86	11.6	-0.8	-3.6	2.5	3.2	4.1	5.5	5.8	7.1	10	0	0.1	5.8	0	0	0	0	0	0	1023.0	0.1	0.0	0.5			
29	8	18	02	05	96	10.5	90	12.5	2.4	0.5	6.6	6.5	6.0	5.9	5.7	7.1	10	0	tr	0.1	0	0	0	0	0	0	1023.0	0.0	0.0	0.6			
30	8	27	05	02	97	7.9	78	8.5	7.9	5.9	7.2	7.5	7.3	6.9	6.3	7.1	10	0	0.0	0.0	0	0	0	0	0	0	1026.5	0.0	0.0	1.0			
31	8	23	05	02	97	6.9	68	11.6	6.4	3.6	5.9	6.2	6.6	6.9	6.6	7.2	10	0	0.3	0.3	0	0	0	0	0	0	1031.5	0.4	0.0	1.0			
Monthly means						3.9	79	8.1	1.8	-1.6	3.7	4.3	4.9	5.8	6.0	7.8																	
Monthly totals																					58.5	80.9							1018.1				
Highest values						11.0		13.1	8.5	5.9	8.8	8.9	8.6	9.0	8.7	9.5				20.2	7.7							11.8	17.6	1.6			
Lowest values						-6.9	55	2.8	-7.1	-10.1	-1.1	0.0	1.0	2.5	3.1	6.2																	
1991-2020 monthly climatological averages						89	8.1	2.2	-0.6	4.1	4.1	4.9	5.6	5.7	7.0						66.1	60.0							1016.9	62.4	67.4	22.6	

Number of days with 2024 normal Snow/sleet falling 1 2.4 50% snow cover 09GMT 0 0.8 Hail or ice pellets 0 0.4 Thunder 0 0.3 Gale 0 0.1 Fog at 09GMT 0 1.4 Air frost 8 9.1 Ground frost 18 18.1 0.2mm precipitation 11 16.4 1.0mm precipitation 8 11.9 5.0mm precipitation 3 4.9 No sunshine 9 11.5 Sunnier than normal, but mean temperature and total rainfall close to average. It was the sunniest January since 2015 and, before that, 2003. The only snowfall was a brief shower on the 8th. Conditions were anticyclonic for much of the month after a rather wet 1st to 5th, with the 6th to the 19th seeing no measurable rainfall.

Key

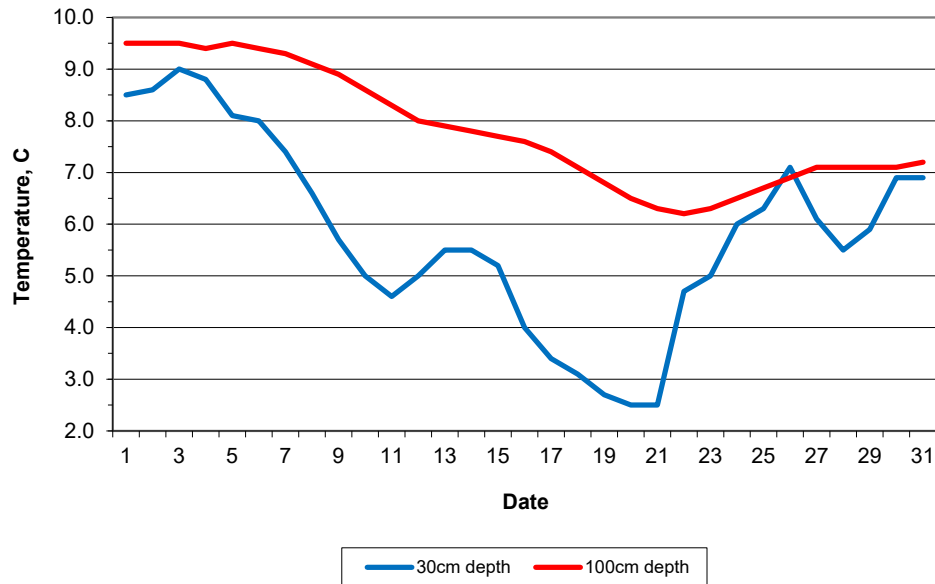
DD: date
 07GMT observations
 N cloud cover (oktas, 9=obscured) dd wind direction (degrees/10)
 ff wind speed (knots)
 ww present weather code
 1 cloud decreasing 50 intermittent slight drizzle
 2 sky not changing 60 intermittent slight rain
 3 cloud increasing 61 continuous slight rain
 5 haze 63 continuous moderate rain
 10 mist 80 slight rain shower
 21 recent rain
 VV visibility (00-50 metres/100, 94 very poor, 95 poor, 96 moderate, 97 good)
 Soil temperatures are for 0700GMT beneath bare soil (5, 10, 20cm) or grass (30, 50, 100cm)

09GMT observations
 Temp temperature (degC) RH relative humidity (%)
 E state of ground (X1, X2 and X3 snow, 10 moist, 20 wet, 40 frozen) SS snow depth (cm)
 Press air pressure (mb)

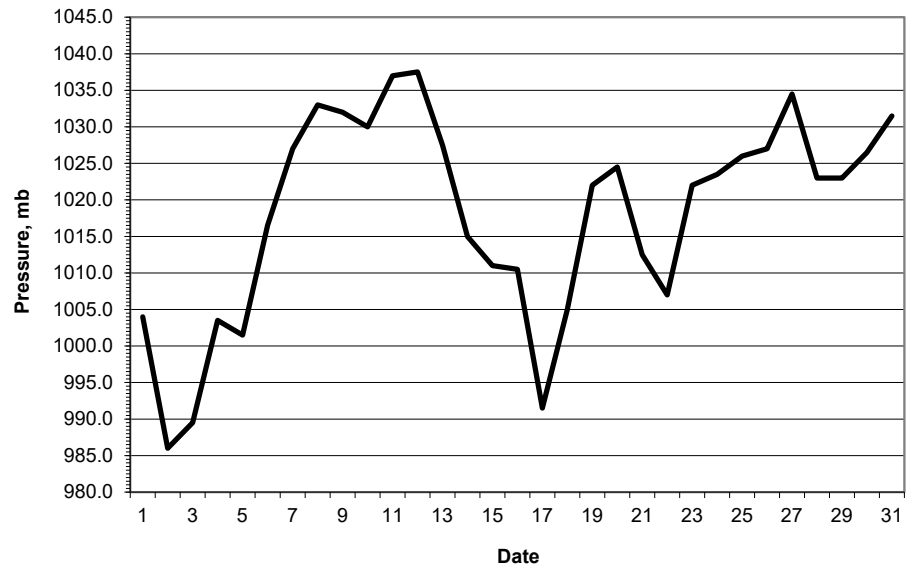
24 hour readings
 Max maximum temperature (degC) beginning 09GMT Min minimum temperature (degC) ending 09GMT
 Gmin grass minimum temperature (degC) ending 09GMT Rain precipitation beginning 09GMT
 Sun sunshine (hours) sunrise-sunset Rain hrs hours of rainfall (>0.1mm/h) 09-09GMT
 Fr. Hrs hours of air frost (00-24GMT) Pch Evap Piche evaporation (ml) beginning 09GMT

Days with
 S snow(5) or sleet(1) falling L 50% snow cover at 09GMT H hail or ice pellets
 T thunder heard G gale F fog at 09GMT

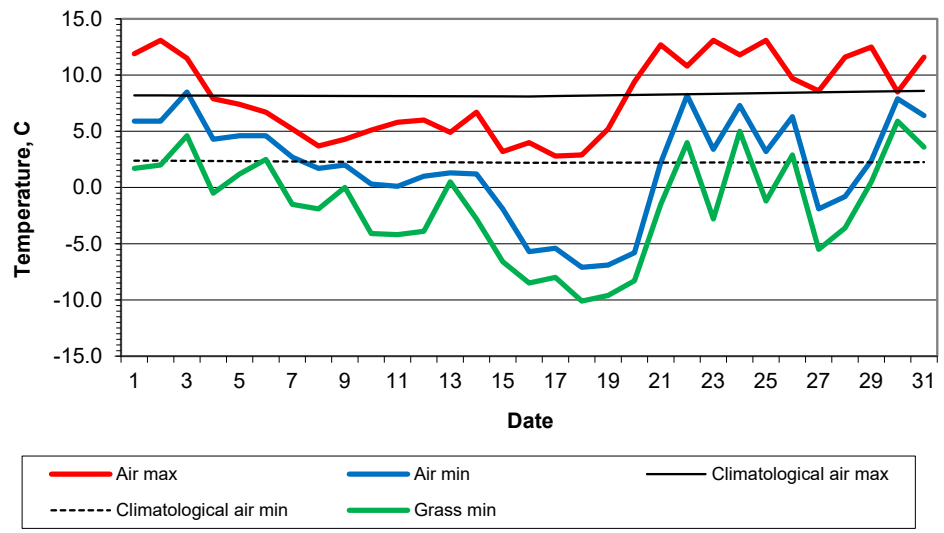
Daily soil temperatures, 0700GMT



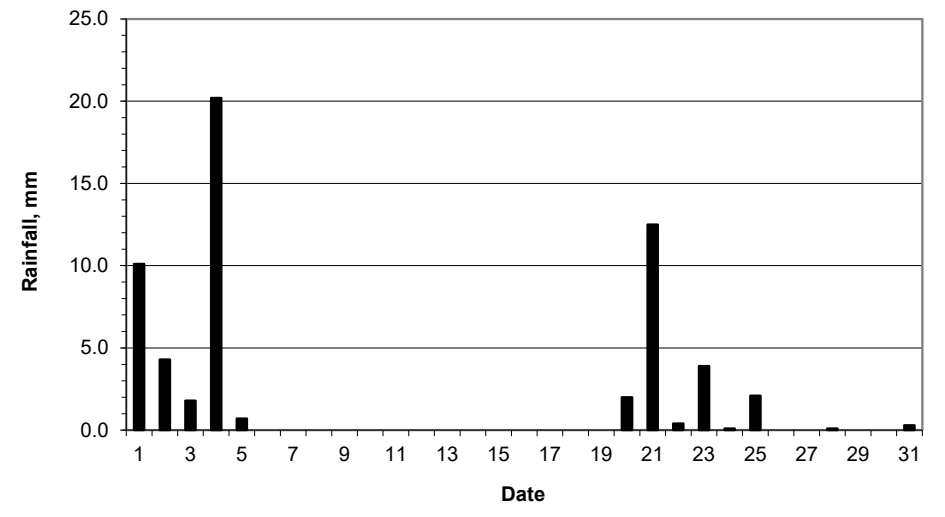
Mean sea level pressure, 0900GMT



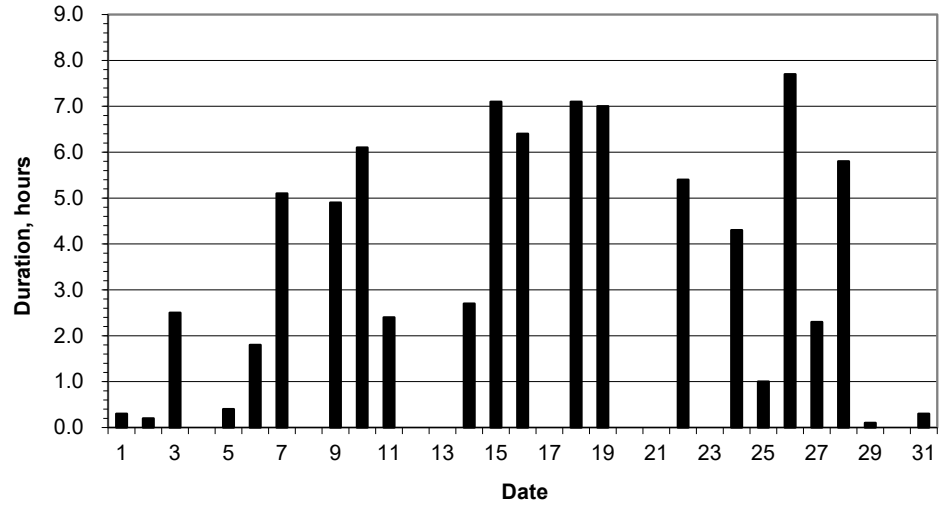
Daily temperature extremes



Daily rainfall



Daily sunshine



Daily evaporation

