

MAIDENHEAD METEOROLOGICAL OBSERVATIONS FOR JANUARY 2023

DD	N	dd	ff	ww	VV	0900GMT		Temperature			Soil temperatures (depth in cm)						E	SS	Rain	Sun	S	L	H	T	G	F	Press	Rain hrs	Fr. hrs	Pch Evap			
						Temp	RH	Max	Min	Gmin	5	10	20	30	50	100																	
01	7	23	05	25	97	8.5	84	11.5	8.2	5.9	7.8	7.9	8.5	8.2	7.6	8.1	20	0	5.7	0.0	0	0	0	0	0	0	1009.0	6.6	0.0	0.1	Number of		
02	2	23	02	02	97	4.2	92	7.6	4.2	-0.8	6.0	6.6	7.6	8.1	7.8	8.2	20	0	0.1	6.4	0	0	0	0	0	1016.0	0.1	1.2	0.2	days with			
03	8	23	02	25	96	7.5	93	13.0	-0.5	-3.8	4.4	4.5	5.7	7.0	7.5	8.4	10	0	2.6	0.0	0	0	0	0	0	1020.0	4.0	0.0	0.8	2023 normal			
04	8	23	02	02	97	12.9	84	13.5	7.5	4.2	9.2	8.9	8.5	7.8	7.4	8.3	20	0	0.2	0.4	0	0	0	0	0	1014.0	0.2	0.0	1.1	Snow/sleet falling			
05	8	23	02	02	96	10.7	86	13.3	9.1	6.1	7.9	7.8	8.0	8.1	7.8	8.4	20	0	1.7	0.6	0	0	0	0	0	1020.0	1.0	0.0	0.9	0			
06	3	23	02	02	97	5.5	85	12.8	5.5	1.0	6.6	7.2	8.2	8.5	8.1	8.5	10	0	1.2	1.3	0	0	0	0	0	1016.0	2.2	0.0	1.0	50% snow cover 09GMT			
07	8	18	05	02	97	10.6	83	11.3	5.5	2.5	7.5	8.0	8.7	8.5	8.2	8.6	10	0	2.9	0.2	0	0	0	0	0	999.0	3.7	0.0	1.0	0			
08	6	23	05	02	97	6.8	86	8.0	6.5	1.4	6.6	7.2	7.9	8.5	8.3	8.7	10	0	10.7	0.0	0	0	0	1	0	993.5	3.5	0.0	0.2	Hail or ice pellets			
09	7	27	02	02	97	4.8	92	8.8	3.3	0.8	4.6	5.3	6.6	7.7	8.0	8.8	10	0	3.7	4.5	0	0	0	0	0	999.0	3.2	0.0	0.7	0			
10	8	18	05	63	96	7.3	91	12.8	1.8	-2.0	5.1	5.1	5.9	7.0	7.5	8.7	20	0	3.0	0.0	0	0	0	0	0	1010.0	2.5	0.0	0.9	Thunder			
11	2	23	02	02	97	6.7	87	11.6	6.1	0.5	5.6	6.2	7.1	7.6	7.5	8.6	20	0	10.7	2.4	0	0	0	0	0	1010.0	12.5	0.0	0.8	1			
12	8	23	09	60	97	11.6	90	12.4	6.7	2.5	8.4	8.1	7.9	7.7	7.5	8.5	20	0	0.2	0.2	0	0	0	0	0	1004.0	0.2	0.0	1.3	Gale			
13	0	27	13	02	97	8.2	67	11.4	7.2	3.2	5.9	6.3	7.1	7.9	7.8	8.5	20	0	10.0	5.8	0	0	0	0	0	1007.0	8.0	0.0	1.6	0			
14	8	23	13	61	94	11.4	89	12.7	4.6	-0.1	7.6	7.2	7.1	7.5	7.6	8.6	20	0	2.7	0.0	0	0	0	0	0	995.5	2.0	0.0	0.8	Fog at 09GMT			
15	6	27	05	02	97	5.3	76	7.4	3.7	0.3	4.5	5.1	6.8	7.5	7.6	8.6	20	0	9.2	4.7	0	0	0	0	0	999.0	4.8	0.0	0.6	2			
16	7	31	09	02	97	3.4	90	5.0	1.2	-2.0	4.4	4.5	5.5	6.8	7.1	8.5	20	0	0.0	2.2	0	0	0	0	0	985.5	0.0	5.3	0.4	Air frost			
17	6	00	00	02	97	-5.0	81	-0.3	-5.8	-9.0	1.1	2.2	3.8	5.8	6.6	8.4	40	0	0.0	1.0	0	0	0	0	0	989.0	0.0	24.0	0.0	11			
18	2	00	00	02	97	-3.0	82	4.8	-5.0	-8.0	0.6	1.0	2.6	4.5	5.6	8.1	40	0	0.0	6.5	0	0	0	0	0	996.5	0.0	11.9	0.2	Ground frost			
19	5	27	02	02	97	-2.5	81	4.6	-3.2	-6.5	0.5	0.9	2.3	4.0	4.9	7.8	40	0	0.0	6.0	0	0	0	0	0	1007.0	0.0	13.6	0.0	20			
20	0	27	05	02	97	1.7	76	5.9	-2.5	-6.2	0.3	0.8	2.0	3.6	4.5	7.5	40	0	0.0	5.5	0	0	0	0	0	1018.5	0.0	3.4	0.3	0.2mm precipitation			
21	6	31	02	02	96	-2.5	80	5.6	-2.8	-7.0	0.3	0.7	2.1	3.6	4.2	7.1	40	0	0.0	6.3	0	0	0	0	0	1033.0	0.0	10.1	0.1	16			
22	8	00	00	02	95	-4.4	81	1.2	-5.7	-9.0	-0.1	0.1	1.5	3.2	4.1	6.9	40	0	0.0	0.0	0	0	0	0	1	1036.5	0.0	20.3	0.0	1.0mm precipitation			
23	6	00	00	02	96	-6.6	83	4.0	-7.7	-10.2	-1.1	-0.1	1.4	2.9	3.6	6.8	40	0	0.0	6.0	0	0	0	0	0	1038.0	0.0	11.4	0.0	13			
24	0	31	02	02	96	-0.1	81	4.9	-6.6	-4.8	0.0	0.5	1.3	2.7	3.4	6.4	40	0	0.0	4.9	0	0	0	0	0	1040.5	0.0	6.9	0.2	5.0mm precipitation			
25	9	00	00	45	03	-0.7	87	5.8	-4.2	-7.5	0.0	0.5	1.2	2.6	3.3	6.2	40	0	1.2	0.0	0	0	0	0	1	1036.0	1.0	10.7	0.2	5			
26	6	36	02	03	96	4.2	83	7.7	-0.7	-0.6	0.2	0.0	1.5	3.0	3.4	6.0	20	0	tr	0.0	0	0	0	0	0	1031.0	0.0	0.0	1.0	No sunshine			
27	8	36	02	02	97	4.5	82	7.4	4.0	-0.1	2.8	3.0	2.0	3.7	3.7	6.0	10	0	0.0	0.6	0	0	0	0	0	1031.0	0.0	0.0	0.7	9			
28	8	27	02	02	96	2.5	76	6.6	1.3	-3.9	2.3	2.9	3.0	3.9	4.0	6.0	40	0	0.0	0.0	0	0	0	0	0	1033.0	0.0	0.0	0.6	Rather cool during 17th-			
29	8	23	02	02	96	4.2	87	8.8	2.5	-1.1	3.6	3.6	4.0	4.3	4.2	6.0	10	0	0.3	0.1	0	0	0	0	0	1028.5	0.3	0.0	0.4	26th and mostly dry from			
30	7	27	05	02	97	5.8	76	9.9	4.2	-0.9	3.8	4.1	4.4	4.6	4.5	6.1	10	0	tr	5.2	0	0	0	0	0	1025.5	0.0	0.0	0.8	16th onwards; rainfall			
31	7	23	05	02	97	6.5	82	11.9	1.3	-3.5	3.9	4.0	4.2	4.6	4.7	6.1	10	0	0.0	4.0	0	0	0	0	0	1024.5	0.0	0.0	1.3	and temperature close to			
Monthly means						4.2	84	8.4	1.6	-1.9	3.9	4.2	5.0	5.9	6.1	7.7											1015.0				normal overall with no		
Monthly totals																				66.1	74.8						55.8	118.8	18.2	less frosty nights than			
Highest values						12.9		13.5	9.1	6.1	9.2	8.9	8.7	8.5	8.3	8.8			10.7	6.5								12.5	24.0	1.6	warmest January since		
Lowest values						-6.6	67	-0.3	-7.7	-10.2	-1.1	-0.1	1.2	2.6	3.3	6.0																	2020 overall and was
1991-2020 monthly climatological averages						8.9	8.1	2.2	-0.6	4.1	4.1	4.9	5.6	5.7	7.0			66.1	60.0									1016.9	62.4	67.4	22.6	normal, helped by sunny	
																															days during 9th-24th.		

Key

DD: date

07GMT observations

N	cloud cover (oktas, 9=obscured)	dd	wind direction (degrees/10)
ff	wind speed (knots)		
ww	present weather code		
1	cloud decreasing	50	intermittent slight drizzle
2	sky not changing	60	intermittent slight rain
3	cloud increasing	61	continuous slight rain
5	haze	63	continuous moderate rain
10	mist	80	slight rain shower
21	recent rain		
VV	visibility (00-50 metres/100, 94 very poor, 95 poor, 96 moderate, 97 good)		

Soil temperatures are for 0700GMT beneath bare soil (5, 10, 20cm) or grass (30, 50, 100cm)

09GMT observations

Temp	temperature (degC)	RH	relative humidity (%)
E	state of ground (X1, X2 and X3 snow, 10 moist, 20 wet, 40 frozen)	SS	snow depth (cm)
Press	air pressure (mb)		

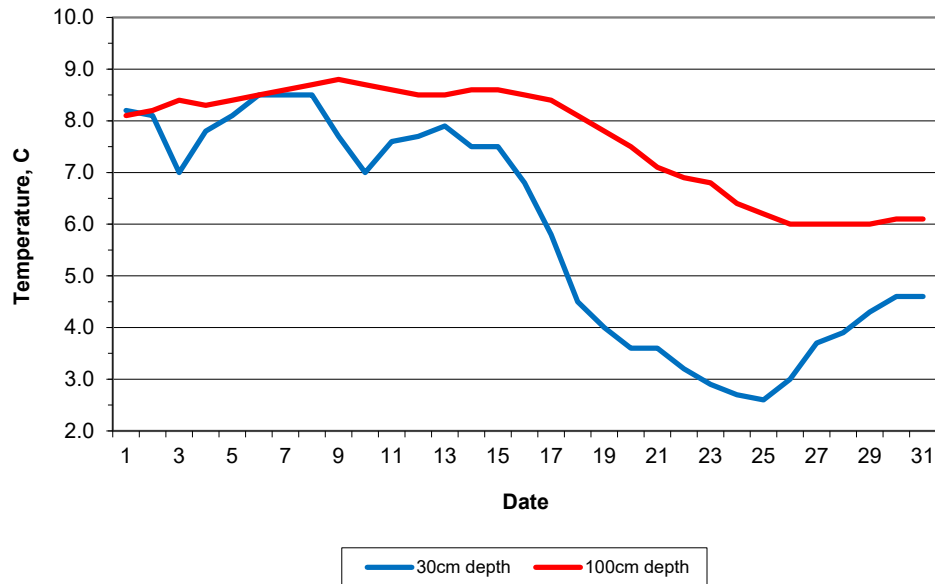
24 hour readings

Max	maximum temperature (degC) beginning 09GMT	Min	minimum temperature (degC) ending 09GMT
Gmin	grass minimum temperature (degC) ending 09GMT	Rain	precipitation beginning 09GMT
Sun	sunshine (hours) sunrise-sunset	Rain hrs	hours of rainfall (>0.1mm/h) 09-09GMT
Fr. Hrs	hours of air frost (00-24GMT)	Pch Evap	Piche evaporation (ml) beginning 09GMT

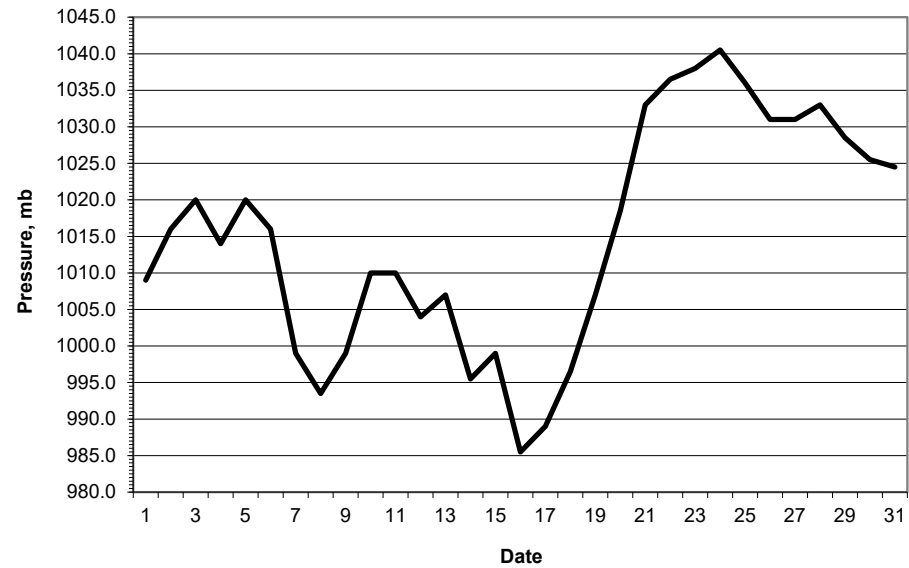
Days with

S	snow(5) or sleet(1) falling	L	50% snow cover at 09GMT	H	hail or ice pellets
T	thunder heard	G	gale	F	fog at 09GMT

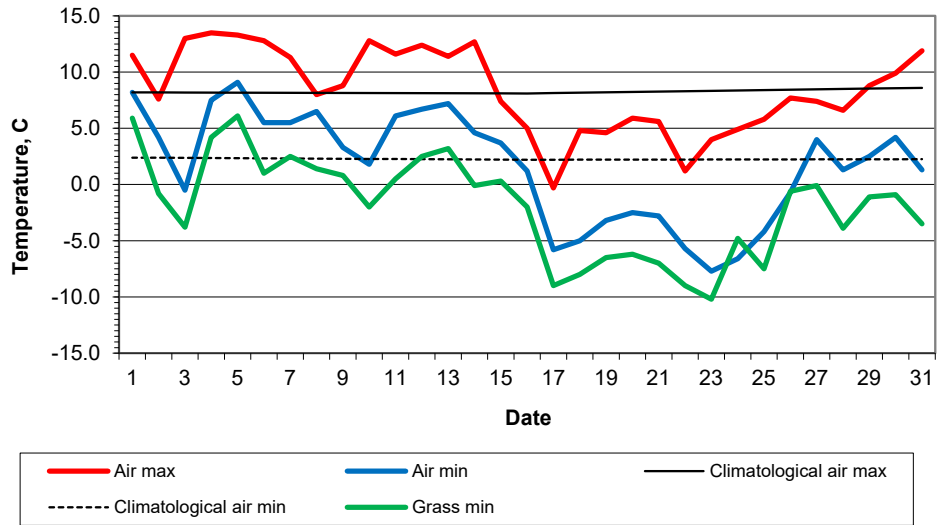
Daily soil temperatures, 0700GMT



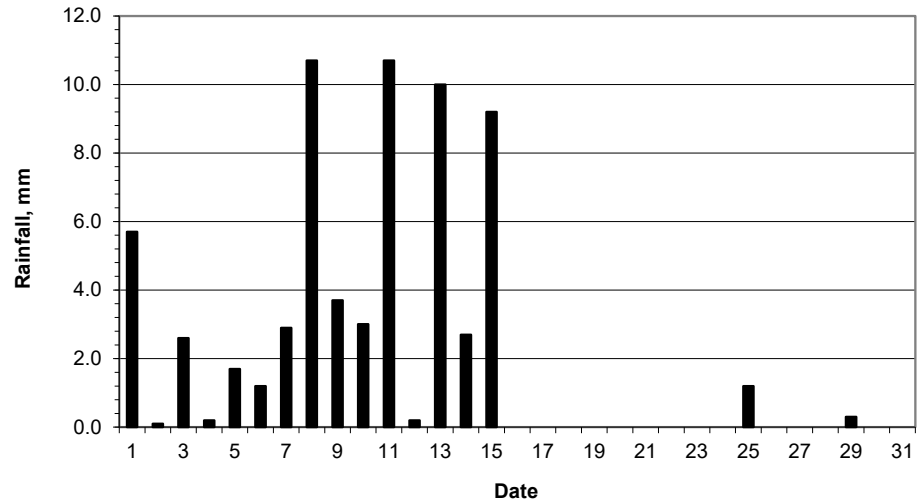
Mean sea level pressure, 0900GMT



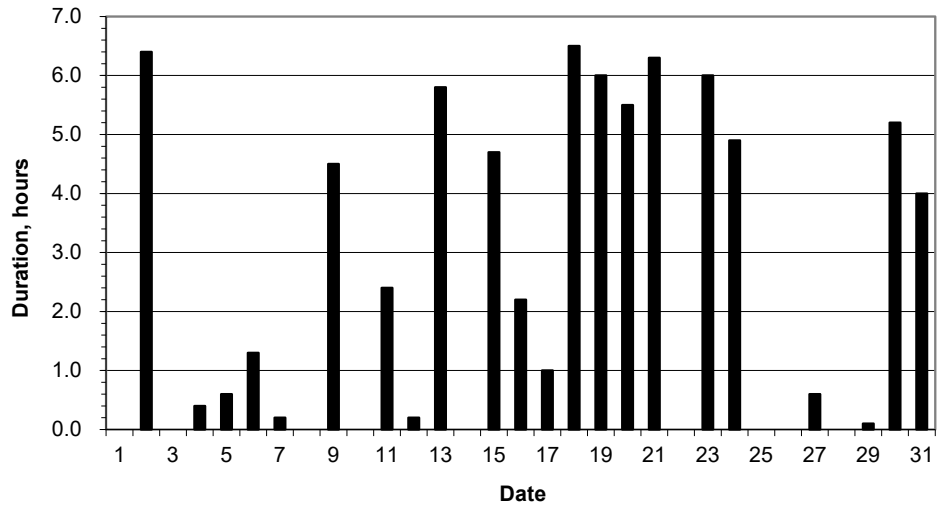
Daily temperature extremes



Daily rainfall



Daily sunshine



Daily evaporation

