

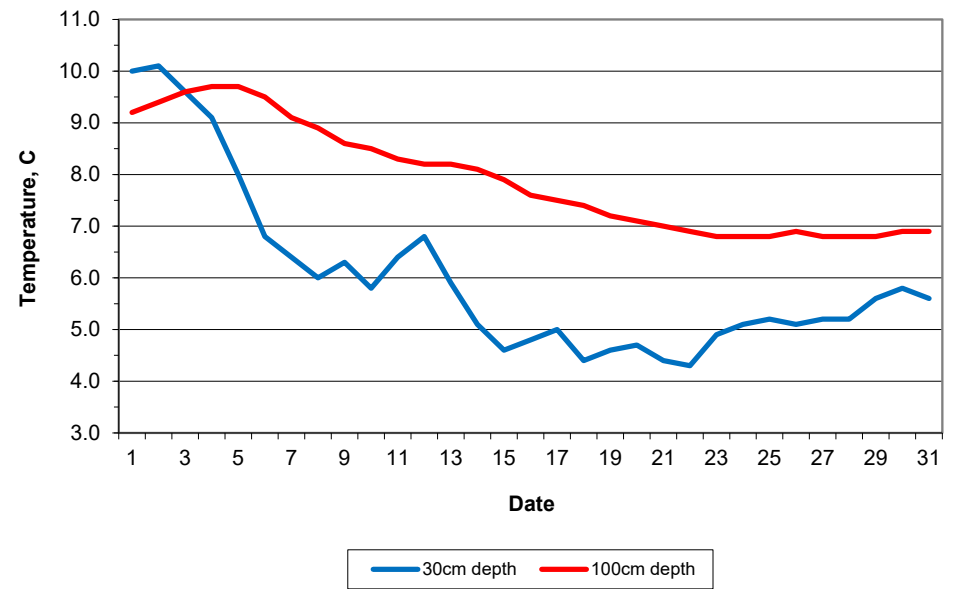
MAIDENHEAD METEOROLOGICAL OBSERVATIONS FOR JANUARY 2022

DD	N	dd	ff	ww	VV	0900GMT		Temperature			Soil temperatures (depth in cm)						E	SS	Rain	Sun	S	L	H	T	G	F	Press	Rain hrs	Fr. hrs	Pch Evap			
						Temp	RH	Max	Min	Gmin	5	10	20	30	50	100																	
01	6	18	02	02	97	12.5	82	14.8	12.5	6.5	10.0	10.1	10.4	10.0	9.2	9.2	10	0	1.2	0.5	0	0	0	0	0	0	1017.0	1.1	0.0	1.1	Number of		
02	7	23	02	02	97	10.6	85	11.8	10.3	7.0	10.0	10.1	10.5	10.1	9.6	9.4	10	0	2.6	0.7	0	0	0	0	0	0	1011.5	2.1	0.0	0.8	days with		
03	7	23	02	02	97	8.6	87	10.5	8.3	3.0	7.7	7.8	8.9	9.6	9.5	9.6	10	0	0.1	0.0	0	0	0	0	0	0	1009.5	0.1	0.0	0.5	2022 normal		
04	8	36	02	21	96	7.4	91	7.6	7.3	3.0	7.8	7.8	8.5	9.1	9.2	9.7	10	0	3.1	0.2	0	0	0	0	0	0	998.5	3.3	0.0	0.5	Snow/sleet falling		
05	0	27	02	02	97	1.7	77	6.4	0.9	-3.0	3.7	3.9	6.0	8.0	8.6	9.7	10	0	0.0	6.5	0	0	0	0	0	0	1013.0	0.0	3.7	0.5	0 2.4		
06	0	18	02	02	97	-4.7	81	7.1	-4.8	-8.0	1.7	2.3	4.3	6.8	7.7	9.5	40	0	1.0	0.7	0	0	0	0	0	0	1020.5	1.0	11.5	0.9	50% snow cover 09GMT		
07	4	27	02	02	97	2.3	80	8.0	-4.7	-2.5	3.3	3.4	5.0	6.4	7.0	9.1	10	0	0.6	2.5	0	0	0	0	0	0	1010.5	1.1	0.0	0.2	0 0.8		
08	8	23	02	60	97	8.0	93	10.0	0.7	-3.0	3.9	3.8	4.6	6.0	6.6	8.9	10	0	4.5	0.0	0	0	0	0	0	0	1005.0	5.8	0.0	0.4	Hail or ice pellets		
09	1	23	02	02	97	0.7	83	7.7	0.7	-3.7	2.8	3.3	5.0	6.3	6.6	8.6	10	0	tr	6.2	0	0	0	0	0	0	1002.5	0.0	0.0	0.3	0 0.4		
10	8	13	02	02	96	3.3	92	9.5	0.2	-3.5	3.8	3.8	4.6	5.8	6.3	8.5	10	0	0.3	0.0	0	0	0	0	0	0	1017.5	0.4	0.0	0.1	Thunder		
11	8	18	02	02	94	9.5	91	10.4	3.3	3.4	6.5	6.2	6.3	6.4	6.4	8.3	10	0	1.9	0.0	0	0	0	0	0	0	1028.5	3.5	0.0	0.1	0 0.3		
12	0	00	00	02	96	-0.6	88	7.0	-0.6	-4.0	3.7	4.0	5.6	6.8	6.7	8.2	10	0	0.0	6.2	0	0	0	0	0	0	1041.5	0.0	2.6	0.3	Gale		
13	1	27	02	02	96	-2.1	85	6.5	-2.1	-5.0	2.2	2.4	4.0	5.9	6.5	8.2	40	0	0.0	6.8	0	0	0	0	0	0	1042.5	0.0	11.2	0.1	0 0.1		
14	0	00	00	02	97	-2.4	84	6.2	-2.5	-5.7	1.5	1.7	3.2	5.1	5.8	8.1	40	0	0.0	6.5	0	0	0	0	0	0	1038.5	0.0	11.7	0.0	Fog at 09GMT		
15	9	00	00	45	02	1.1	89	5.3	-2.4	-5.2	2.1	1.8	2.9	4.6	5.3	7.9	10	0	0.1	0.9	0	0	0	0	0	1	1027.0	0.1	6.6	0.0	3 1.4		
16	9	00	00	45	04	5.1	95	7.9	1.1	-1.2	3.4	3.3	3.9	4.8	5.2	7.6	10	0	tr	1.1	0	0	0	0	0	1	1025.5	0.0	0.0	0.2	Air frost		
17	0	27	02	02	97	-1.1	89	7.6	-1.2	-5.3	1.8	2.1	3.6	5.0	5.3	7.5	40	0	0.0	7.1	0	0	0	0	0	0	1038.0	0.0	6.8	0.1	14 9.1		
18	9	00	00	45	03	-1.9	89	4.6	-2.9	-6.7	1.1	1.6	3.5	4.4	5.5	7.4	40	0	0.0	0.0	0	0	0	0	0	1	1038.0	0.0	11.0	0.1	Ground frost		
19	6	18	02	02	97	3.9	94	9.0	-1.9	-2.8	3.4	3.3	4.1	4.6	4.9	7.2	10	0	0.0	1.4	0	0	0	0	0	0	1026.5	0.0	0.0	0.5	22 18.1		
20	0	31	02	02	97	1.2	85	5.8	0.2	-5.2	1.7	2.0	3.4	4.7	5.1	7.1	40	0	0.0	7.6	0	0	0	0	0	0	1036.0	0.0	0.0	0.9	0.2mm precipitation		
21	0	00	00	02	97	-3.3	78	5.0	-3.3	-7.4	1.2	1.6	2.9	4.4	4.8	7.0	40	0	0.0	0.5	0	0	0	0	0	0	1041.0	0.0	9.0	0.6	9 16.4		
22	8	27	02	02	96	5.0	79	6.5	-3.3	-5.0	3.3	2.8	3.4	4.3	4.6	6.9	10	0	0.0	0.0	0	0	0	0	0	0	1038.5	0.0	0.0	0.6	1.0mm precipitation		
23	8	09	02	02	96	4.9	81	6.0	4.9	3.7	4.1	4.2	4.5	4.9	4.8	6.8	10	0	0.0	0.0	0	0	0	0	0	0	1037.0	0.0	0.0	0.6	6 11.9		
24	8	09	02	02	97	4.6	74	4.9	4.6	3.1	4.5	4.6	4.8	5.1	5.1	6.8	10	0	0.0	0.0	0	0	0	0	0	0	1034.0	0.0	0.0	0.5	5.0mm precipitation		
25	8	27	02	02	96	2.5	78	4.0	2.5	1.9	3.9	3.9	4.6	5.2	5.2	6.8	10	0	0.0	0.0	0	0	0	0	0	0	1034.5	0.0	0.0	0.4	0 4.9		
26	8	27	02	02	97	3.9	84	8.7	2.1	1.2	3.9	3.7	4.5	5.1	5.1	6.9	10	0	0.0	0.9	0	0	0	0	0	0	1034.5	0.0	0.0	0.8	No sunshine		
27	8	31	05	02	97	8.7	85	12.3	3.9	-1.5	5.1	4.7	5.0	5.2	5.2	6.8	10	0	tr	1.0	0	0	0	0	0	0	1027.0	0.0	0.0	0.2	9 11.5		
28	7	31	02	02	97	0.7	87	10.9	-0.7	-4.6	2.3	2.7	4.5	5.2	5.2	6.8	10	0	0.1	3.8	0	0	0	0	0	0	1036.5	0.2	4.8	1.1	A cool, dry and sunny		
29	4	27	09	02	97	10.9	77	13.5	0.7	-0.5	6.0	6.0	5.8	5.6	5.3	6.8	10	0	tr	4.0	0	0	0	0	0	0	1028.0	0.0	0.0	1.4	month without any snow -		
30	0	27	02	02	97	-1.3	83	7.9	-1.5	-5.5	3.0	3.0	5.0	5.8	5.4	6.9	40	0	0.5	6.5	0	0	0	0	0	0	1035.0	0.9	3.7	1.7	but the mildest January		
31	6	27	05	02	97	5.8	71	9.3	-1.3	-1.5	5.2	5.5	5.1	5.6	5.6	6.9	10	0	0.0	4.5	0	0	0	0	0	0	1025.0	0.0	0.0	1.8	since 2020, helped by a		
Monthly means						3.4	84	8.2	1.0	-1.9	4.0	4.1	5.1	6.0	6.2	7.9												1026.4				very mild start to the	
Monthly totals																				16.0	76.1							19.6	82.6	17.3	month. The driest		
Highest values						12.5		14.8	12.5	7.0	10.0	10.1	10.5	10.1	9.6	9.7			4.5	7.6								5.8	11.7	1.8	January since 1997. The		
Lowest values						-4.7	71	4.0	-4.8	-8.0	1.1	1.6	2.9	4.3	4.6	6.8																	sunniest January since
1991-2020 monthly climatological averages																																2015, while shock waves	
						89	8.1	2.2	-0.6	4.1	4.1	4.9	5.6	5.7	7.0			66.1	60.0								1016.9	62.4	67.4	22.6	from the Tonga volcano		

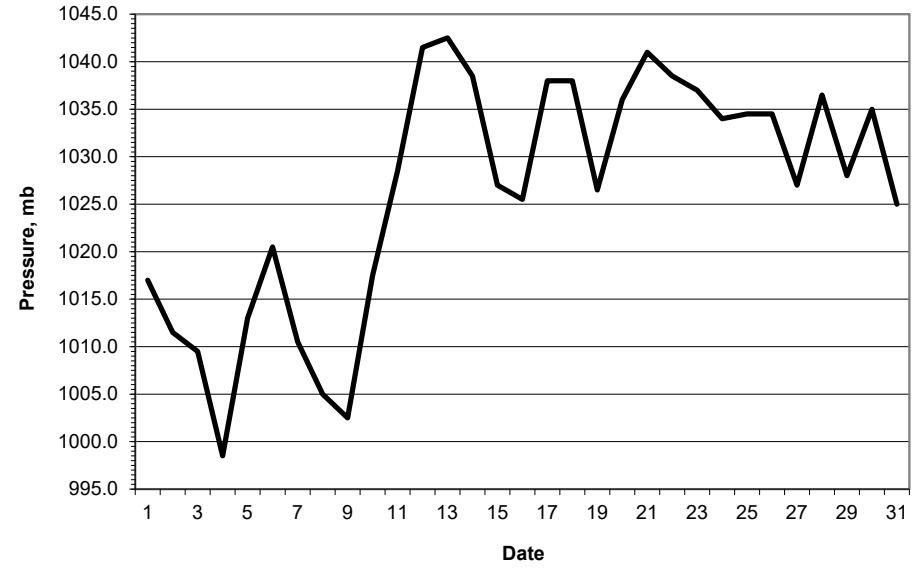
barograph on the 15th and 16th.

Key
 DD: date
 07GMT observations
 N cloud cover (oktas, 9=obscured) dd wind direction (degrees/10)
 ff wind speed (knots)
 ww present weather code
 1 cloud decreasing 50 intermittent slight drizzle
 2 sky not changing 60 intermittent slight rain
 3 cloud increasing 61 continuous slight rain
 5 haze 63 continuous moderate rain
 10 mist 80 slight rain shower
 21 recent rain
 VV visibility (00-50 metres/100, 94 very poor, 95 poor, 96 moderate, 97 good)
 Soil temperatures are for 0700GMT beneath bare soil (5, 10, 20cm) or grass (30, 50, 100cm)
 09GMT observations
 Temp temperature (degC) RH relative humidity (%)
 E state of ground (X1, X2 and X3 snow, 10 moist, 20 wet, 40 frozen) SS snow depth (cm)
 Press air pressure (mb)
 24 hour readings
 Max maximum temperature (degC) beginning 09GMT Min minimum temperature (degC) ending 09GMT
 Gmin grass minimum temperature (degC) ending 09GMT Rain precipitation beginning 09GMT
 Sun sunshine (hours) sunrise-sunset Rain hrs hours of rainfall (>0.1mm/h) 09-09GMT
 Fr. Hrs hours of air frost (00-24GMT) Pch Evap Piche evaporation (ml) beginning 09GMT
 Days with
 S snow(5) or sleet(1) falling L 50% snow cover at 09GMT H hail or ice pellets
 T thunder heard G gale F fog at 09GMT

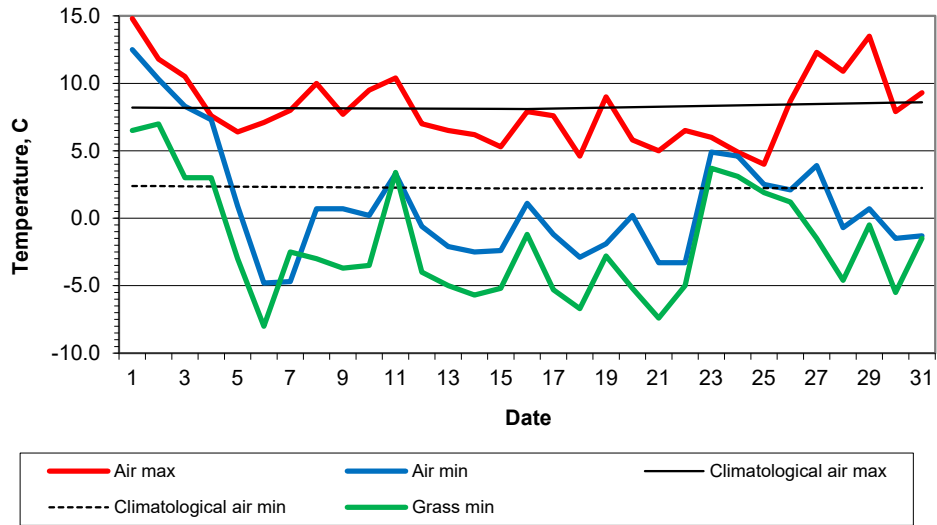
Daily soil temperatures, 0700GMT



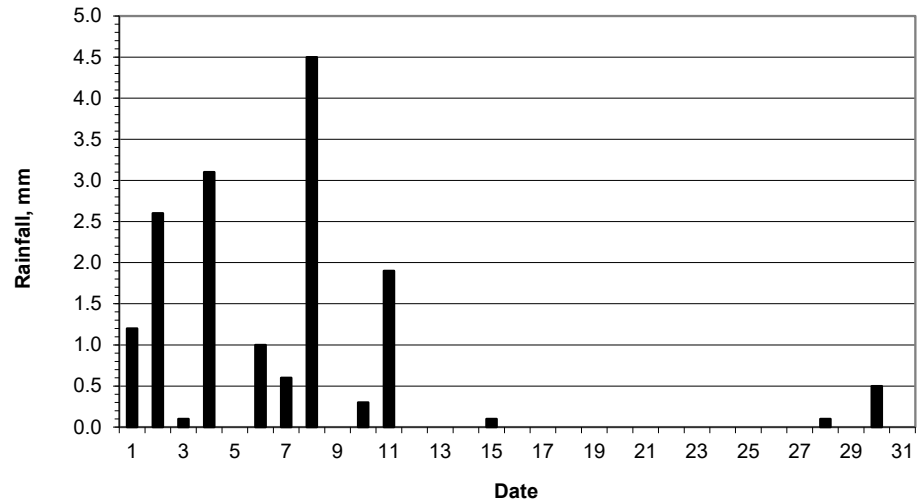
Mean sea level pressure, 0900GMT



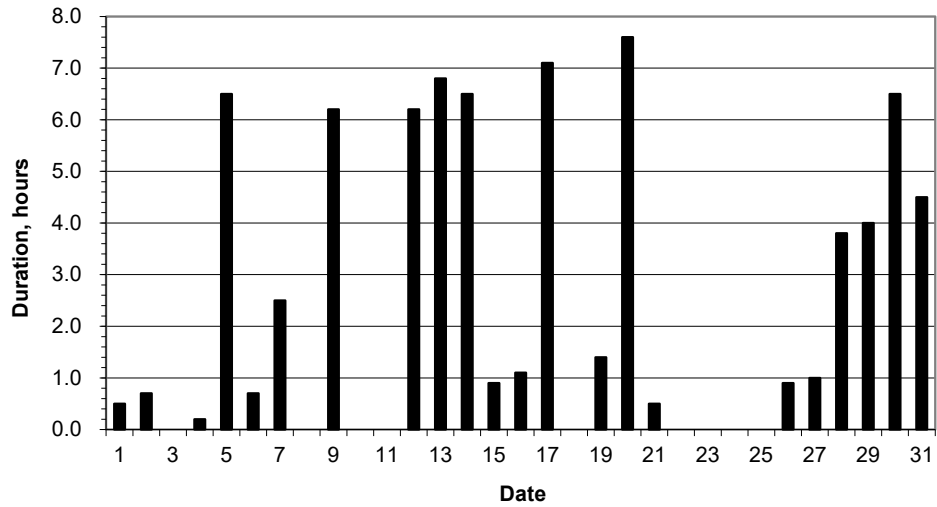
Daily temperature extremes



Daily rainfall



Daily sunshine



Daily evaporation

