

MAIDENHEAD METEOROLOGICAL OBSERVATIONS FOR FEBRUARY 2024

DD	N	dd	ff	ww	VV	0900GMT		Temperature			Soil temperatures (depth in cm)						E	SS	Rain	Sun	S	L	H	T	G	F	Press	Rain hrs	Fr. hrs	Pch Evap	
						Temp	RH	Max	Min	Gmin	5	10	20	30	50	100															
01	2	27	02	02	97	1.5	80	9.1	1.2	-2.8	4.5	5.6	6.7	7.1	6.7	7.3	10	0	0.0	7.6	0	0	0	0	0	0	1034.5	0.0	0.0	0.7	Number of days with 2024 normal Snow/sleet falling 0 3.3 50% snow cover 09GMT 0 1.3 Hail or ice pellets 0 0.6 Thunder 0 0.3 Gale 0 0.0 Fog at 09GMT 1 1.2 Air frost 2 7.8 Ground frost 8 16.5 0.2mm precipitation 20 13.5 1.0mm precipitation 18 10.2 5.0mm precipitation 6 3.2 No sunshine 8 7.7 The warmest February on record locally since at least 1860. It was 0.4 degC warmer than the February of 1990 in Boyn Hill, the previous warmest February in the local record. It was the dullest February since 2011 and the wettest February since 1951 (when 125 mm fell locally). 541 mm of rain has fallen in the last six months - (normal is 381 mm).
02	8	23	02	02	97	8.7	89	13.7	1.5	-2.4	6.3	5.7	5.8	6.4	6.5	7.5	10	0	tr	2.3	0	0	0	0	0	1030.5	0.0	0.0	1.0		
03	8	27	02	02	97	11.7	80	13.5	8.7	6.9	8.3	8.1	7.7	7.3	6.8	7.5	10	0	1.8	0.2	0	0	0	0	0	1028.0	4.6	0.0	0.8		
04	8	23	05	50	96	11.2	90	13.0	11.2	8.6	9.1	9.0	8.6	8.1	7.4	7.5	10	0	tr	0.0	0	0	0	0	0	1025.5	0.0	0.0	1.1		
05	7	27	05	02	97	9.6	74	12.0	9.2	6.0	7.9	8.2	8.4	8.4	7.8	7.8	10	0	tr	0.1	0	0	0	0	0	1022.0	0.0	0.0	1.4		
06	7	23	09	02	97	11.8	72	13.9	9.6	7.1	9.0	9.0	8.8	8.5	8.0	8.0	10	0	11.9	0.2	0	0	0	0	0	1011.0	9.1	0.0	1.1		
07	7	05	02	02	97	5.2	90	6.7	4.7	3.6	7.0	7.5	8.2	8.8	8.2	8.1	20	0	9.2	0.0	0	0	0	0	0	1006.5	4.7	0.0	0.5		
08	8	09	05	61	96	5.5	91	11.4	5.0	3.8	6.3	6.7	7.4	8.1	8.1	8.3	20	0	18.5	0.0	0	0	0	0	0	993.0	14.1	0.0	0.1		
09	8	23	05	21	97	10.9	91	13.1	5.5	4.5	8.8	8.7	8.5	8.1	7.7	8.2	20	0	3.2	0.5	0	0	0	0	0	977.0	2.0	0.0	0.3		
10	8	09	02	05	95	8.0	92	11.2	5.7	1.5	7.7	7.9	8.4	8.6	8.1	8.2	20	0	2.7	1.7	0	0	0	0	0	983.5	1.1	0.0	0.3		
11	8	05	02	21	96	7.6	89	11.4	7.1	3.7	7.6	8.0	8.4	8.6	8.1	8.4	20	0	0.4	3.3	0	0	0	0	0	989.0	0.2	0.0	0.2		
12	0	27	02	02	97	3.0	92	9.7	0.8	-3.2	4.4	5.5	6.5	8.0	8.1	8.5	20	0	0.0	7.5	0	0	0	0	0	1004.0	0.0	0.0	0.9		
13	8	18	05	02	97	4.3	91	12.2	1.1	-3.2	4.3	4.6	5.6	7.1	7.5	8.4	10	0	2.7	0.0	0	0	0	0	0	1013.5	3.8	0.0	0.4		
14	8	23	05	02	97	12.2	89	13.6	4.3	3.0	8.8	8.5	8.0	7.6	7.3	8.3	10	0	1.6	0.0	0	0	0	0	0	1012.0	1.6	0.0	0.4		
15	7	18	02	01	97	12.4	89	17.2	12.1	7.2	9.8	9.9	9.5	8.6	7.9	8.2	20	0	2.0	3.8	0	0	0	0	0	1009.5	1.4	0.0	0.7		
16	0	27	02	01	97	9.3	89	13.4	8.8	4.0	8.7	9.2	9.5	9.3	8.6	8.4	20	0	0.8	3.8	0	0	0	0	0	1014.0	1.2	0.0	0.9		
17	8	13	02	02	96	10.2	89	13.0	9.3	3.2	9.0	9.2	10.0	9.2	8.8	8.6	20	0	17.3	0.1	0	0	0	0	0	1029.0	12.0	0.0	0.4		
18	8	27	05	21	96	11.2	90	15.4	10.2	8.9	10.6	10.1	9.1	9.7	9.0	8.8	20	0	0.1	2.7	0	0	0	0	0	1023.0	0.1	0.0	0.4		
19	7	27	05	80	97	9.6	89	13.8	6.7	5.1	8.6	8.9	8.4	9.5	9.2	8.9	10	0	tr	2.5	0	0	0	0	0	1029.0	0.0	0.0	1.0		
20	8	23	02	02	97	7.8	89	12.7	4.7	0.0	7.3	7.5	9.0	9.1	9.0	9.1	10	0	1.6	1.8	0	0	0	0	0	1028.5	3.0	0.0	0.9		
21	8	18	05	61	97	9.8	85	12.0	7.8	6.1	8.6	8.9	9.0	9.1	8.9	9.1	20	0	3.1	0.0	0	0	0	0	0	1009.0	3.5	0.0	0.7		
22	8	18	09	02	97	10.8	89	11.7	8.5	2.5	8.9	9.0	7.0	9.1	8.9	9.1	20	0	13.5	0.0	0	0	0	0	0	982.5	6.2	0.0	0.2		
23	2	23	05	02	97	5.1	85	10.1	2.2	-2.2	5.1	5.9	5.9	8.4	8.6	9.1	20	0	2.0	3.7	0	0	0	0	0	986.5	1.1	0.0	0.5		
24	4	00	00	44	05	0.2	86	7.0	-1.7	-5.1	3.4	4.2	5.4	7.7	8.1	9.1	10	0	1.6	2.2	0	0	0	0	1	994.5	0.3	7.2	0.3		
25	8	09	02	42	07	2.0	88	9.1	-0.1	-4.1	3.8	4.3	6.2	7.0	7.5	8.9	10	0	4.4	1.4	0	0	0	0	0	996.5	7.5	0.6	1.0		
26	7	05	13	02	97	6.0	71	9.5	2.0	1.5	4.8	5.5	5.3	7.1	7.2	8.6	20	0	tr	3.2	0	0	0	0	0	1008.0	0.0	0.0	1.5		
27	7	31	02	10	96	2.5	85	8.6	0.4	-4.3	3.7	4.1	5.3	6.7	7.0	8.4	10	0	0.0	2.3	0	0	0	0	0	1022.5	0.0	0.0	0.4		
28	8	18	02	10	96	8.2	89	11.8	2.5	0.5	6.3	6.2	6.4	6.9	6.9	8.2	10	0	2.3	0.1	0	0	0	0	0	1019.5	2.1	0.0	0.7		
29	8	18	05	61	96	10.8	90	10.9	8.2	6.2	8.6	8.5	8.6	7.8	7.3	8.1	20	0	15.1	0.0	0	0	0	0	0	1004.0	5.9	0.0	0.2		
Monthly means						7.8	87	11.7	5.4	2.3	7.1	7.4	7.6	8.1	7.9	8.4										1009.9					
Monthly totals																			115.8	51.0						85.5	7.8	19.0			
Highest values						12.4		17.2	12.1	8.9	10.6	10.1	10.0	9.7	9.2	9.1			18.5	7.6						14.1	7.2	1.5			
Lowest values						0.2	71	6.7	-1.7	-5.1	3.4	4.1	5.3	6.4	6.5	7.3															
1991-2020 monthly climatological averages						87	9.1	2.3	-0.6	4.2	4.1	5.0	5.6	5.6	6.5				48.5	80.6						1017.2	51.7	55.1	28.5		

DD: date

07GMT observations

N	cloud cover (oktas, 9=obscured)	dd	wind direction (degrees/10)
ff	wind speed (knots)		
ww	present weather code		
1	cloud decreasing	50	slight drizzle
2	sky not changing	60	intermittent slight rain
3	cloud increasing	61	continuous slight rain
21	recent rain	71	continuous slight snow
25	recent rain shower	95	light thunderstorm
VV	visibility (00-50 metres/100, 94 very poor, 95 poor, 96 moderate, 97 good)		

Soil temperatures are for 0700GMT beneath bare soil (5, 10, 20cm) or grass (30, 50, 100cm)

09GMT observations

Temp	temperature (degC)	RH	relative humidity (%)
E	state of ground (X0 hail, X1 to X9 snow lying, 10 moist, 20 wet, 40 frozen)		
SS	snow depth (cm)		
Press	air pressure (mb)		

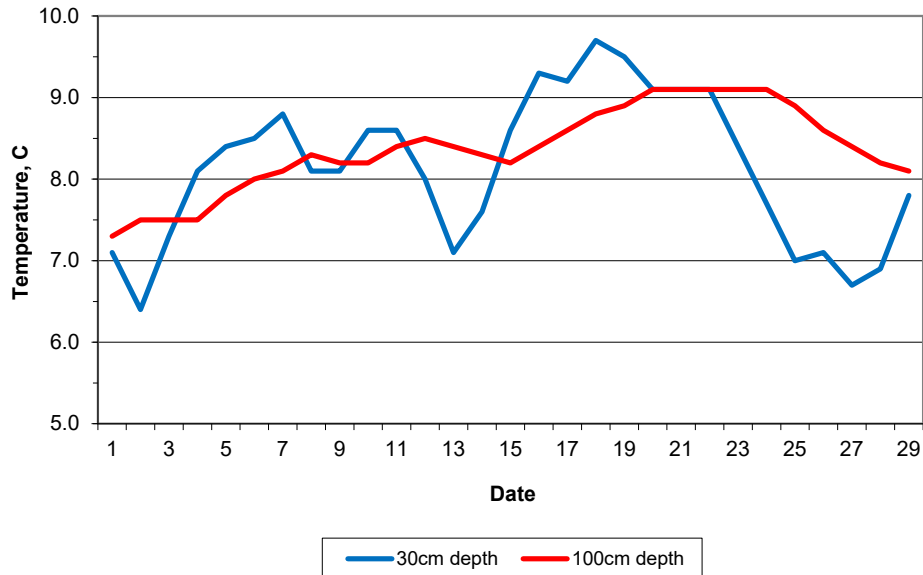
24 hour readings

Max	maximum temperature (degC) beginning 09GMT	Min	minimum temperature (degC) ending 09GMT
Gmin	grass minimum temperature (degC) ending 09GMT	Rain	precipitation beginning 09GMT
Sun	sunshine (hours) sunrise-sunset	Rain hrs	hours of rainfall (>0.1mm/h) 09-09GMT
Fr. Hrs	hours of air frost (00-24GMT)	Pch Evap	Piche evaporation (ml) beginning 09GMT

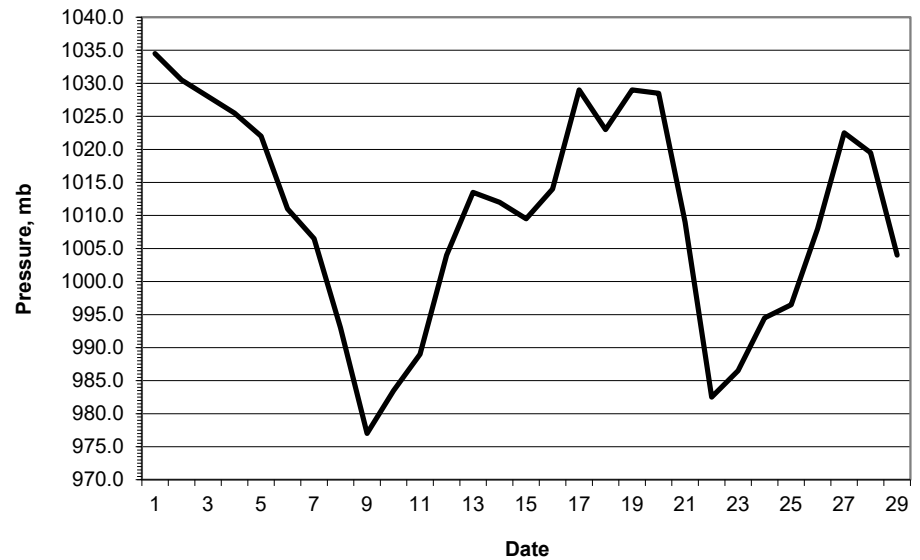
Days with

S	snow(5) or sleet(1) falling	L	50% snow cover at 09GMT	H	hail or ice pellets
T	thunder heard	G	gale	F	fog at 09GMT

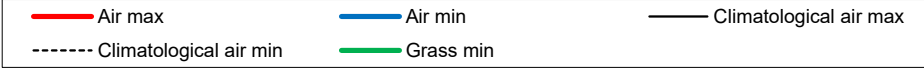
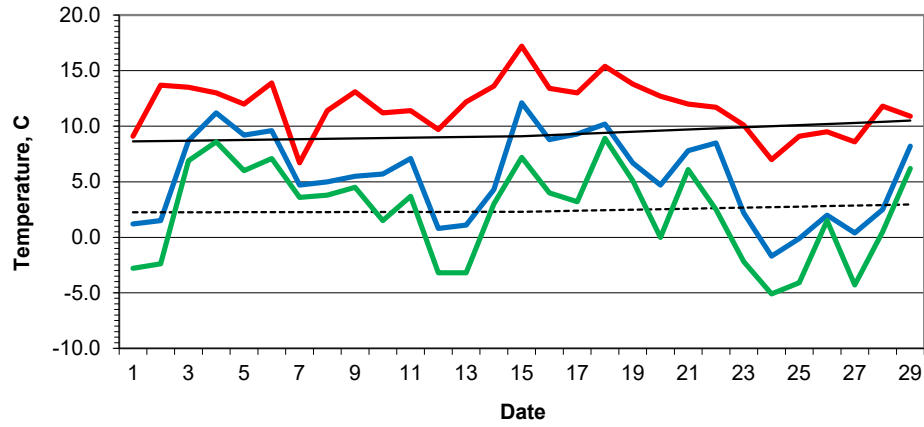
Daily soil temperatures, 0700GMT



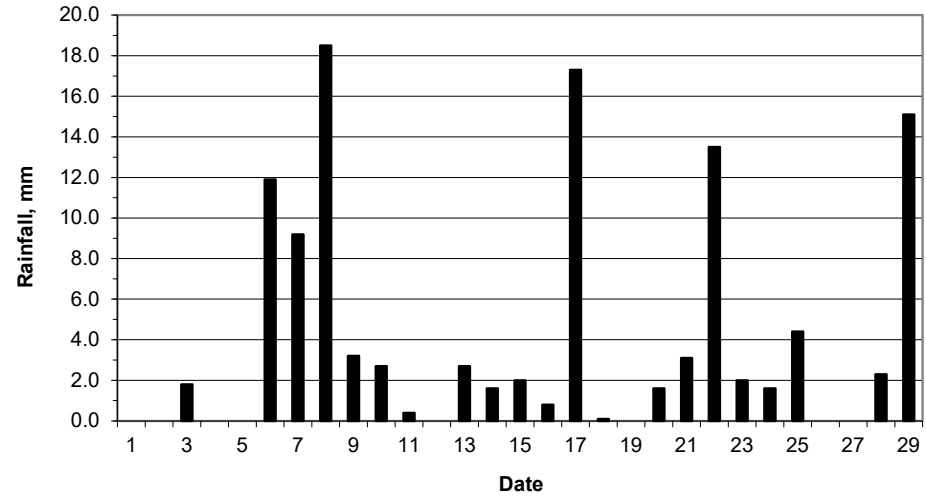
Mean sea level pressure, 0900GMT



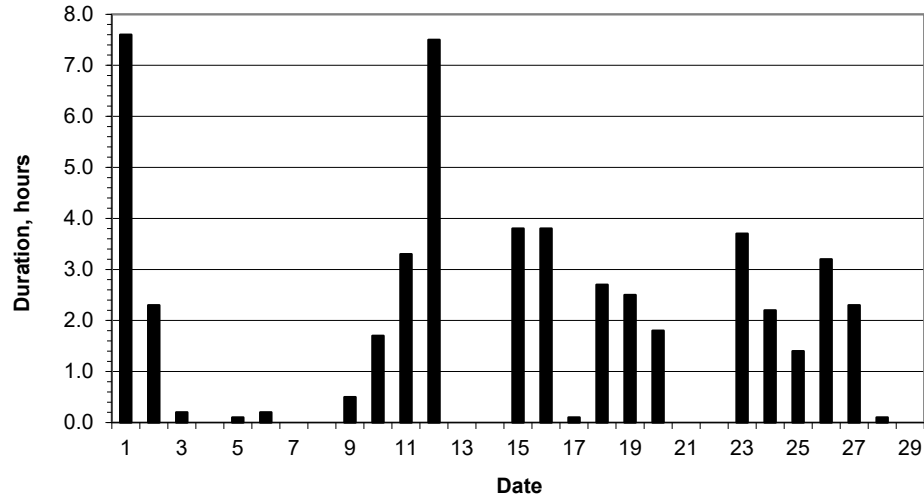
Daily temperature extremes



Daily rainfall



Daily sunshine



Daily evaporation

