

MAIDENHEAD METEOROLOGICAL OBSERVATIONS FOR FEBRUARY 2023

DD	N	dd	ff	ww	VV	0900GMT		Temperature			Soil temperatures (depth in cm)						E	SS	Rain	Sun	S	L	H	T	G	F	Press	Rain hrs	Fr. hrs	Pch Evap		
						Temp	RH	Max	Min	Gmin	5	10	20	30	50	100																
01	7	23	02	02	97	6.5	72	11.0	2.6	-3.0	3.8	3.9	4.1	4.8	4.8	6.2	10	0	0.0	3.4	0	0	0	0	0	0	1025.5	0.0	0.0	1.3	Number of days with 2023 normal Snow/sleet falling 0 3.3 50% snow cover 09GMT 0 1.3 Hail or ice pellets 0 0.6 Thunder 0 0.3 Gale 0 0.0 Fog at 09GMT 3 1.2 Air frost 9 7.8 Ground frost 17 16.5 0.2mm precipitation 5 13.5 1.0mm precipitation 2 10.2 5.0mm precipitation 0 3.2 No sunshine 7 7.7 The rainfall total was only 4.8 mm.This fell in the second half of the month; there was no measurable rainfall on the 16 days from 30 January to the 14th and in the 44-day period from 16 January to the 28th only 6.3 mm fell. Persistent high pressure led to an average reading of 1029 mb, the highest for any month since February 2012.	
02	8	27	02	02	97	6.1	86	11.7	3.7	1.5	4.4	4.5	5.0	5.2	5.1	6.2	10	0	0.0	0.5	0	0	0	0	0	1027.5	0.0	0.0	0.9			
03	8	27	05	02	97	9.2	81	13.0	6.1	3.2	6.1	6.2	6.2	5.9	5.4	6.3	10	0	0.0	2.6	0	0	0	0	0	1030.5	0.0	0.0	0.8			
04	7	27	02	02	97	8.3	84	9.4	8.3	2.0	6.7	6.9	6.7	6.5	5.9	6.5	10	0	0.0	0.0	0	0	0	0	0	1038.5	0.0	0.0	0.8			
05	3	26	02	01	97	3.3	76	8.7	2.7	-1.3	4.7	5.5	6.2	6.6	6.2	6.6	10	0	0.0	6.5	0	0	0	0	0	1047.0	0.0	1.7	0.6			
06	0	00	00	02	97	-0.9	83	9.4	-1.3	-5.5	2.8	3.5	4.5	5.7	5.9	6.8	10	0	0.0	8.2	0	0	0	0	0	1043.5	0.0	5.1	1.0			
07	9	00	00	45	02	-0.1	85	6.5	-2.7	-6.8	1.8	2.5	3.5	5.0	5.4	6.8	10	0	0.0	4.6	0	0	0	0	1	1039.5	0.0	12.4	0.4			
08	9	00	00	45	01	-2.8	80	7.0	-5.3	-9.0	1.1	2.0	3.0	4.4	4.9	6.6	40	0	tr	4.4	0	0	0	0	1	1037.0	0.0	13.9	0.2			
09	8	23	02	02	95	2.0	86	9.5	-2.8	-5.5	1.1	1.8	2.5	3.8	4.4	6.6	10	0	0.0	7.6	0	0	0	0	0	1032.5	0.0	7.6	0.5			
10	7	31	02	02	97	-1.5	85	9.2	-3.5	-7.0	1.1	1.7	2.5	3.8	4.2	6.3	40	0	0.0	3.9	0	0	0	0	0	1038.0	0.0	9.7	1.1			
11	8	27	02	02	97	8.0	86	10.5	-1.5	-1.6	4.5	4.5	4.6	4.4	4.4	6.2	10	0	0.0	0.0	0	0	0	0	0	1037.0	0.0	0.0	0.6			
12	8	13	02	02	97	7.6	79	8.7	7.0	5.1	5.3	5.5	5.4	5.2	5.0	6.1	10	0	tr	0.0	0	0	0	0	0	1038.0	0.0	0.0	0.9			
13	8	09	02	02	97	6.3	75	11.9	6.2	5.0	5.6	5.7	5.7	5.7	5.3	6.2	10	0	tr	6.8	0	0	0	0	0	1035.0	0.0	0.0	0.8			
14	9	00	00	45	03	3.4	96	9.7	0.0	-4.2	3.9	4.2	4.5	5.5	5.5	6.4	10	0	0.0	2.8	0	0	0	0	1	1032.5	0.0	0.0	0.6			
15	7	09	02	10	95	0.8	88	14.7	-0.4	-4.1	2.8	3.3	4.0	5.2	5.3	6.5	10	0	0.5	7.7	0	0	0	0	0	1024.0	0.8	3.9	1.8			
16	8	23	09	02	97	9.3	84	13.3	0.8	-0.5	5.8	6.0	5.7	5.7	5.5	6.5	10	0	0.4	0.0	0	0	0	0	0	1020.0	0.4	0.0	0.9			
17	8	27	09	02	97	11.6	79	14.7	9.3	6.1	7.6	7.5	8.1	6.6	6.0	6.6	10	0	tr	1.8	0	0	0	0	0	1021.5	0.0	0.0	1.2			
18	8	23	13	02	97	11.3	78	13.5	10.7	7.2	8.4	8.5	7.6	7.5	6.6	6.7	10	0	tr	0.0	0	0	0	0	0	1021.5	0.0	0.0	1.1			
19	7	27	05	02	97	8.4	75	14.0	7.4	2.3	6.9	7.2	7.5	7.6	7.1	7.0	10	0	0.0	6.5	0	0	0	0	0	1028.0	0.0	0.0	1.3			
20	8	23	05	02	97	8.5	85	13.7	6.6	2.2	7.2	7.4	8.1	7.6	7.2	7.1	10	0	tr	3.7	0	0	0	0	0	1026.0	0.0	0.0	1.1			
21	8	27	02	02	97	7.9	86	10.3	7.8	6.5	7.8	8.0	7.6	7.8	7.4	7.3	10	0	2.2	0.0	0	0	0	0	0	1020.0	1.2	0.0	0.3			
22	8	23	02	02	96	7.3	89	9.7	6.2	3.4	7.3	7.5	7.0	7.9	7.5	7.5	10	0	0.1	0.0	0	0	0	0	0	1011.0	0.1	0.0	0.5			
23	8	36	05	02	97	6.9	82	8.6	2.5	-1.3	6.5	6.7	5.5	7.5	7.4	7.6	10	0	0.0	0.4	0	0	0	0	0	1019.0	0.0	0.8	0.9			
24	8	27	02	03	97	2.9	79	10.3	-1.5	-4.5	4.3	4.6	5.6	6.8	7.0	7.6	10	0	1.4	2.3	0	0	0	0	0	1014.0	0.3	5.2	1.0			
25	8	36	05	02	97	4.7	73	8.4	2.9	-1.5	4.6	5.0	4.5	6.6	6.7	7.6	10	0	tr	1.7	0	0	0	0	0	1017.5	0.0	0.0	1.3			
26	2	05	05	02	97	4.1	74	8.5	1.4	-3.0	3.3	4.0	4.1	6.1	6.5	7.5	10	0	0.0	7.2	0	0	0	0	0	1027.0	0.0	0.0	1.6			
27	7	36	09	03	97	4.9	80	9.0	0.5	-4.9	3.1	3.5	4.1	5.6	6.0	7.4	10	0	0.0	2.9	0	0	0	0	0	1032.5	0.0	0.0	1.1			
28	3	05	02	03	97	5.1	87	8.6	-1.3	-5.3	2.4	3.4	4.2	5.5	5.8	7.2	10	0	0.2	1.5	0	0	0	0	0	1034.5	0.4	2.1	1.2			
Monthly means						5.3	82	10.5	2.6	-0.9	4.7	5.0	5.3	5.9	5.9	6.8											1029.2					
Monthly totals																					4.8	87.0						3.2	62.4	25.8		
Highest values						11.6		14.7	10.7	7.2	8.4	8.5	8.1	7.9	7.5	7.6				2.2	8.2							1.2	13.9	1.8		
Lowest values						-2.8	72	6.5	-5.3	-9.0	1.1	1.7	2.5	3.8	4.2	6.1																
1991-2020 monthly climatological averages						87	9.1	2.3	-0.6	4.2	4.1	5.0	5.6	5.6	6.5					48.5	80.6							1017.2	51.7	55.1	28.5	

DD: date

07GMT observations

N	cloud cover (oktas, 9=obscured)	dd	wind direction (degrees/10)
ff	wind speed (knots)		
ww	present weather code		
1	cloud decreasing	50	slight drizzle
2	sky not changing	60	intermittent slight rain
3	cloud increasing	61	continuous slight rain
21	recent rain	71	continuous slight snow
25	recent rain shower	95	light thunderstorm

VV visibility (00-50 metres/100, 94 very poor, 95 poor, 96 moderate, 97 good)

Soil temperatures are for 0700GMT beneath bare soil (5, 10, 20cm) or grass (30, 50, 100cm)

09GMT observations

Temp	temperature (degC)	RH	relative humidity (%)
E	state of ground (X0 hail, X1 to X9 snow lying, 10 moist, 20 wet, 40 frozen)		
SS	snow depth (cm)		
Press	air pressure (mb)		

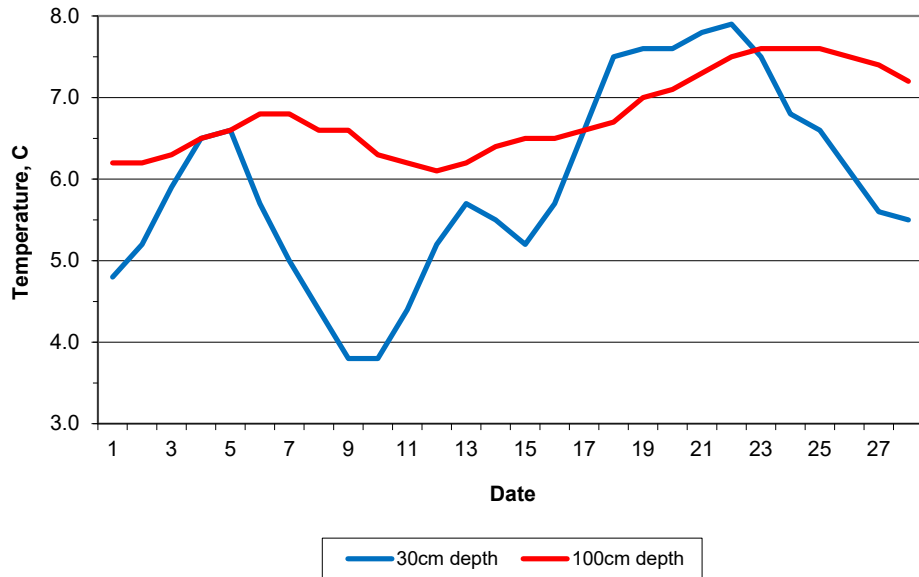
24 hour readings

Max	maximum temperature (degC) beginning 09GMT	Min	minimum temperature (degC) ending 09GMT
Gmin	grass minimum temperature (degC) ending 09GMT	Rain	precipitation beginning 09GMT
Sun	sunshine (hours) sunrise-sunset	Rain hrs	hours of rainfall (>0.1mm/h) 09-09GMT
Fr. Hrs	hours of air frost (00-24GMT)	Pch Evap	Piche evaporation (ml) beginning 09GMT

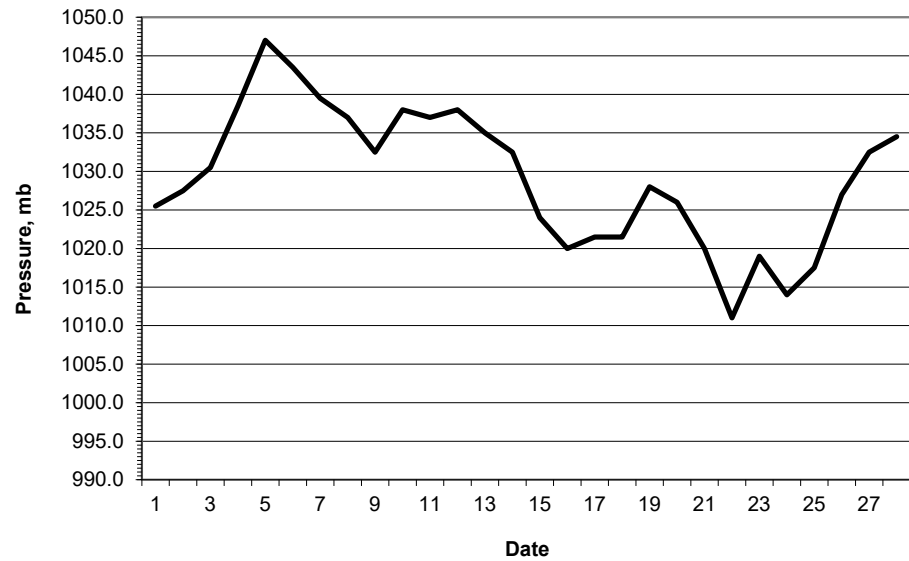
Days with

S	snow(5) or sleet(1) falling	L	50% snow cover at 09GMT	H	hail or ice pellets
T	thunder heard	G	gale	F	fog at 09GMT

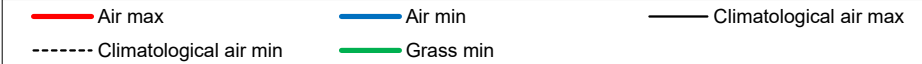
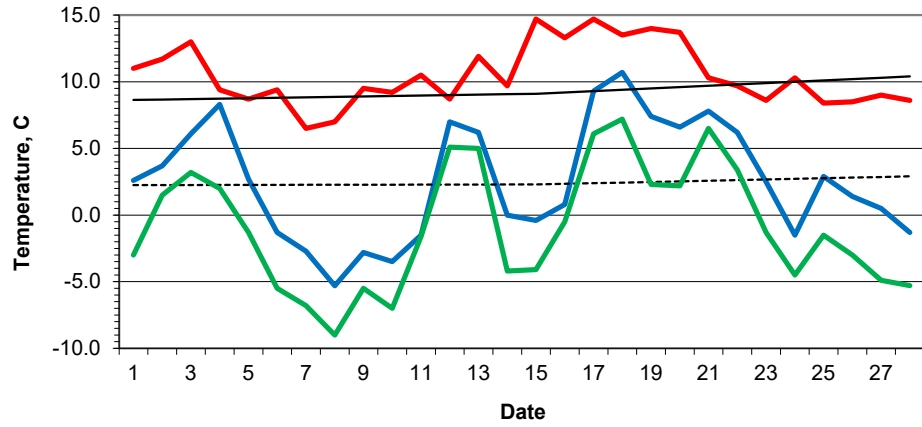
**Daily soil temperatures, 0700GMT**



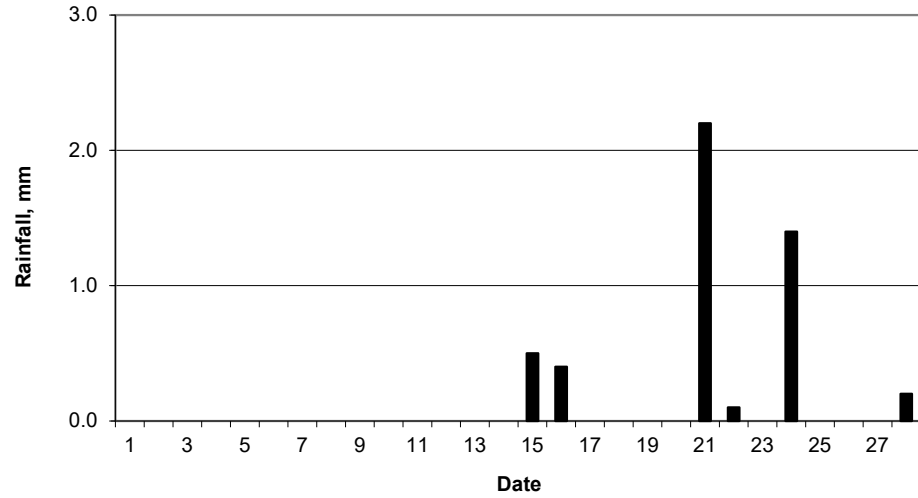
**Mean sea level pressure, 0900GMT**



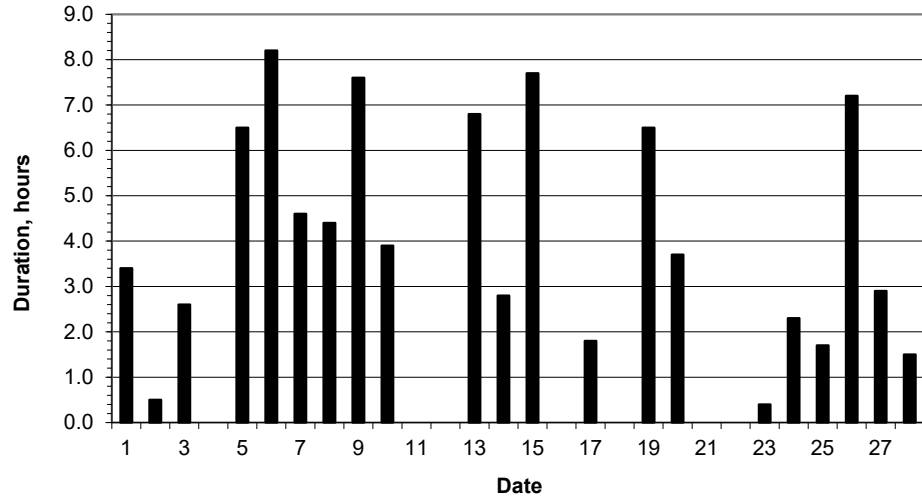
### Daily temperature extremes



### Daily rainfall



### Daily sunshine



### Daily evaporation

