

MAIDENHEAD METEOROLOGICAL OBSERVATIONS FOR FEBRUARY 2022

DD	N	dd	ff	ww	VV	0900GMT		Temperature			Soil temperatures (depth in cm)						E	SS	Rain	Sun	S	L	H	T	G	F	Press	Rain hrs	Fr. hrs	Pch Evap		
						Temp	RH	Max	Min	Gmin	5	10	20	30	50	100																
01	6	27	05	02	97	9.4	79	14.2	4.3	-1.5	5.4	4.9	5.1	5.6	5.6	7.0	10	0	tr	6.2	0	0	0	0	0	0	1022.5	0.0	0.0	1.6	Number of days with 2022 normal Snow/sleet falling 2 3.3 50% snow cover 09GMT 0 1.3 Hail or ice pellets 1 0.6 Thunder 0 0.3 Gale 0 0.0 Fog at 09GMT 0 1.2 Air frost 4 7.8 Ground frost 13 16.5 0.2mm precipitation 16 13.5 1.0mm precipitation 10 10.2 5.0mm precipitation 4 3.2 No sunshine 4 7.7 Milder, wetter and sunnier than normal. It was the mildest February since 2002, with the fewest air/ground frosts in February since 2017/2011. It was the second wettest February since 2014 and the sunniest since 2019. The 25th-27th was an unusually sunny spell while storm Eunice felled a few trees in the town on the 18th.	
02	2	27	05	02	97	9.1	81	12.4	8.2	3.4	5.8	5.8	6.3	6.2	6.0	7.0	10	0	0.0	0.9	0	0	0	0	0	1024.0	0.0	0.0	0.9			
03	7	27	02	02	97	7.4	81	10.3	7.2	3.1	6.6	6.7	6.9	6.7	6.3	7.1	10	0	4.3	0.2	0	0	0	0	0	1015.5	2.2	0.0	1.0			
04	8	36	13	63	96	4.0	82	8.0	4.0	2.2	7.3	7.2	7.1	7.0	6.6	7.2	20	0	0.2	4.9	1	0	0	0	0	1009.0	0.2	0.0	1.0			
05	6	23	02	02	97	1.6	82	10.7	1.1	-3.5	2.9	3.4	4.9	6.4	6.6	7.3	10	0	4.6	4.2	0	0	0	0	0	1022.0	6.8	0.0	1.0			
06	8	27	09	60	97	9.6	85	11.5	1.6	1.0	7.2	7.0	6.7	6.5	6.4	7.3	20	0	0.3	3.4	0	0	0	0	0	1005.0	0.3	0.0	1.3			
07	0	27	02	02	97	2.2	79	11.1	1.2	-2.9	3.4	3.9	5.3	6.5	6.6	7.3	10	0	tr	3.0	0	0	0	0	0	1028.0	0.0	0.0	1.1			
08	8	23	02	02	96	11.1	68	12.4	2.2	1.6	7.2	6.9	7.0	6.8	6.5	7.4	10	0	0.0	0.1	0	0	0	0	0	1027.5	0.0	0.0	1.2			
09	7	27	02	02	97	8.3	87	13.4	7.3	1.7	6.6	6.7	7.5	7.3	6.9	7.4	10	0	2.5	1.9	0	0	0	0	0	1025.0	3.5	0.0	0.5			
10	8	27	05	02	97	5.2	88	8.0	4.6	1.1	6.4	6.5	7.2	7.5	7.2	7.5	10	0	0.0	1.9	0	0	0	0	0	1023.5	0.0	0.0	0.9			
11	7	23	02	02	97	0.6	84	9.4	-1.1	-5.2	3.2	3.4	5.3	6.8	7.0	7.7	10	0	0.0	6.5	0	0	0	0	0	1034.0	0.0	3.6	0.7			
12	7	18	02	02	97	5.5	80	8.8	-0.1	-3.9	3.2	3.4	4.6	6.3	6.6	7.6	10	0	tr	3.1	0	0	0	0	0	1024.5	0.0	0.5	1.4			
13	8	18	09	02	97	7.7	76	10.0	5.5	2.0	6.1	5.9	6.1	6.4	6.3	7.5	10	0	14.9	0.0	0	0	0	0	0	1004.5	12.6	0.0	0.6			
14	1	23	02	02	97	5.7	89	9.4	4.8	0.7	5.6	5.9	6.7	6.8	6.6	7.5	20	0	0.6	2.8	0	0	0	0	0	998.0	2.3	0.0	0.6			
15	8	23	05	03	97	6.9	89	12.5	1.7	-2.2	4.7	4.6	5.6	6.8	6.7	7.5	20	0	10.1	0.0	0	0	0	0	0	1008.0	8.9	0.0	0.4			
16	4	27	13	02	97	12.4	77	14.6	6.9	3.4	8.3	7.8	7.5	7.0	6.7	7.5	20	0	0.5	2.0	0	0	0	0	0	998.0	1.7	0.0	1.8			
17	0	27	09	02	97	8.7	67	12.4	7.9	2.8	6.7	7.1	8.0	7.8	7.3	7.6	10	0	1.9	7.0	0	0	0	0	0	1009.5	3.7	0.0	1.2			
18	8	23	13	02	97	10.0	72	10.9	8.0	4.0	8.4	8.2	5.9	7.9	7.5	7.7	20	0	0.1	4.3	0	0	0	0	0	991.0	0.1	0.0	2.3			
19	0	23	05	02	97	3.8	76	10.7	1.8	-2.5	3.9	4.3	7.0	7.4	7.5	7.9	10	0	3.5	1.2	0	0	0	0	0	1013.0	2.3	0.0	1.0			
20	8	27	05	02	96	10.3	80	11.7	3.8	1.5	7.2	7.2	6.6	7.1	7.0	7.9	10	0	7.4	0.0	0	0	0	0	0	1006.5	7.0	0.0	1.4			
21	6	27	19	02	97	8.2	62	11.3	4.5	0.4	5.1	5.1	6.5	7.2	7.2	7.8	20	0	0.2	3.7	0	0	0	0	0	1005.0	0.2	0.0	1.7			
22	8	23	05	02	97	10.1	84	13.1	5.1	-0.7	6.6	6.1	5.5	7.0	7.1	7.9	10	0	0.1	4.3	0	0	0	0	0	1015.5	0.1	0.0	1.1			
23	1	23	02	02	97	3.9	91	11.6	-0.7	-4.6	3.4	3.8	6.8	7.0	7.1	7.8	10	0	3.5	2.7	0	0	0	0	0	1024.5	2.0	3.7	1.4			
24	8	27	05	61	96	5.6	83	8.7	3.9	2.5	6.6	6.6	5.0	7.0	7.0	7.8	20	0	0.3	6.0	5	0	4	0	0	1008.0	0.2	0.0	1.3			
25	0	27	02	02	97	5.8	73	11.7	2.3	-2.2	3.6	3.8	4.5	6.7	6.8	7.8	10	0	0.0	9.0	0	0	0	0	0	1025.5	0.0	0.0	1.1			
26	1	09	02	02	97	2.2	84	11.1	-1.8	-5.2	2.6	2.8	4.5	6.5	6.6	7.8	10	0	0.0	9.0	0	0	0	0	0	1031.5	0.0	7.6	1.5			
27	0	13	02	02	97	5.0	70	11.7	1.9	-3.9	2.8	3.2	4.5	6.2	6.5	7.7	10	0	0.0	9.2	0	0	0	0	0	1024.5	0.0	0.0	1.8			
28	8	13	02	02	97	9.0	78	11.2	1.1	-3.0	5.5	4.9	5.1	6.0	6.2	7.5	10	0	6.3	0.0	0	0	0	0	0	1024.0	9.1	0.0	0.3			
Monthly means						6.8	80	11.2	3.5	-0.4	5.4	5.5	6.1	6.8	6.7	7.5											1016.0					
Monthly totals																				61.3	97.5						63.2	15.4	32.1			
Highest values						12.4		14.6	8.2	4.0	8.4	8.2	8.0	7.9	7.5	7.9			14.9	9.2							12.6	7.6	2.3			
Lowest values																																
1991-2020 monthly climatological averages						0.6	62	8.0	-1.8	-5.2	2.6	2.8	4.5	5.6	5.6	7.0																
						87	9.1	2.3	-0.6	4.2	4.1	5.0	5.6	5.6	6.5			48.5	80.6								1017.2	51.7	55.1	28.5		

DD: date

07GMT observations

N	cloud cover (oktas, 9=obscured)	dd	wind direction (degrees/10)
ff	wind speed (knots)		
ww	present weather code		
1	cloud decreasing	50	slight drizzle
2	sky not changing	60	intermittent slight rain
3	cloud increasing	61	continuous slight rain
21	recent rain	71	continuous slight snow
25	recent rain shower	95	light thunderstorm
VV	visibility (00-50 metres/100, 94 very poor, 95 poor, 96 moderate, 97 good)		

Soil temperatures are for 0700GMT beneath bare soil (5, 10, 20cm) or grass (30, 50, 100cm)

09GMT observations

Temp	temperature (degC)	RH	relative humidity (%)
E	state of ground (X0 hail, X1 to X9 snow lying, 10 moist, 20 wet, 40 frozen)		
SS	snow depth (cm)		
Press	air pressure (mb)		

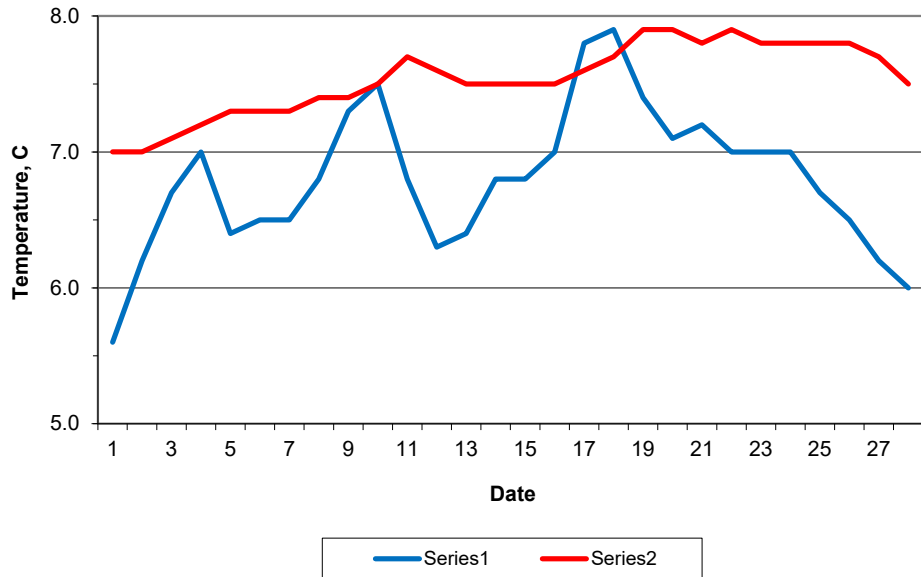
24 hour readings

Max	maximum temperature (degC) beginning 09GMT	Min	minimum temperature (degC) ending 09GMT
Gmin	grass minimum temperature (degC) ending 09GMT	Rain	precipitation beginning 09GMT
Sun	sunshine (hours) sunrise-sunset	Rain hrs	hours of rainfall (>0.1mm/h) 09-09GMT
Fr. Hrs	hours of air frost (00-24GMT)	Pch Evap	Piche evaporation (ml) beginning 09GMT

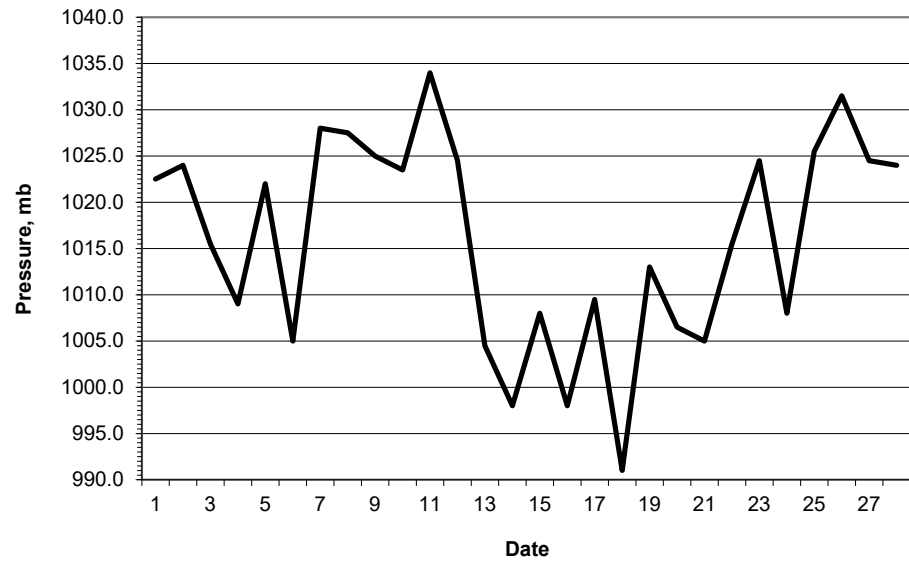
Days with

S	snow(5) or sleet(1) falling	L	50% snow cover at 09GMT	H	hail or ice pellets
T	thunder heard	G	gale	F	fog at 09GMT

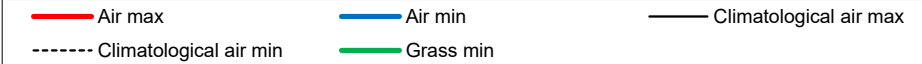
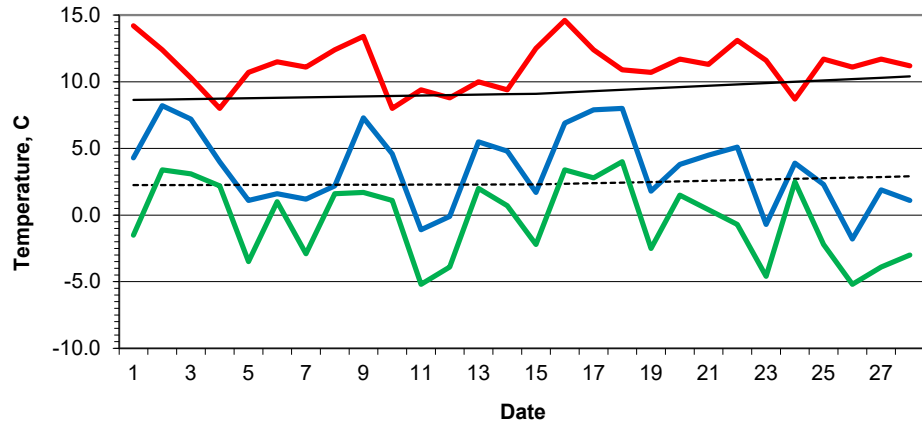
Daily soil temperatures, 0700GMT



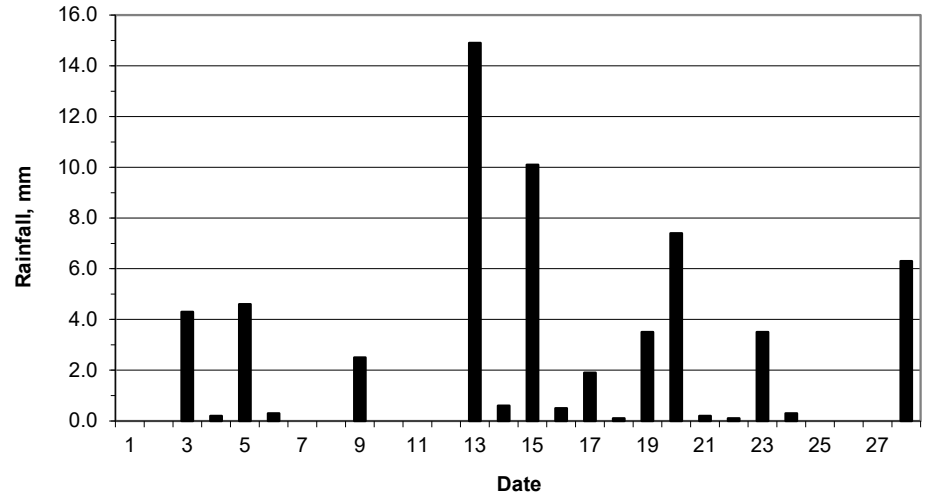
Mean sea level pressure, 0900GMT



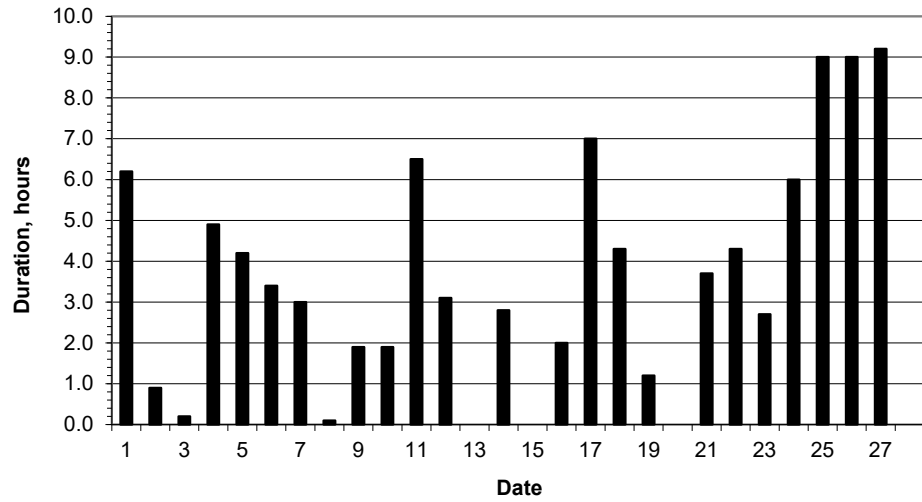
Daily temperature extremes



Daily rainfall



Daily sunshine



Daily evaporation

