

MAIDENHEAD METEOROLOGICAL OBSERVATIONS FOR FEBRUARY 2008

DD	N	dd	ff	ww	VV	0900GMT		Temperature			Soil temperatures (depth in cm)						E	SS	Rain	Sun	S	L	H	T	G	F	Press	Rain	Fr.	Pch		
						Temp	RH	Max	Min	Gmin	5	10	20	30	50	100												hrs	hrs	Evap		
01	6	31	05	01	97	3.0	94	9.7	2.7	0.0	4.2	4.3	5.0	6.7	7.0	7.9	10	0	0.0	7.5	0	0	0	0	0	0	0	1000.5	0.0	0.0	1.4	Number of days with 2008 normal Snow/sleet falling 0 3.0 50% snow cover 09GMT 0 1.7 Hail or ice pellets 0 0.4 Thunder 1 0.2 Gale 0 0.3 Fog at 09GMT 1 2.4 Air frost 13 9.3 Ground frost 22 17.5 0.2mm precipitation 6 11.4 1.0mm precipitation 5 9.1 5.0mm precipitation 1 3.0 No sunshine 7 9.2 A very mild month, but slightly cooler than in 2007 warm by day but cool nights. The sunniest February since before 1953 with about half the normal precipitation - although no snowfall.
02	2	27	02	02	97	0.0	86	6.9	-1.7	-3.0	2.2	2.6	4.4	6.0	6.5	7.9	40	0	0.0	5.2	0	0	0	0	0	0	1017.0	0.0	1.4	0.9		
03	6	18	13	02	97	5.2	72	8.3	0.0	-2.4	4.0	3.9	5.0	5.8	6.3	7.7	10	0	2.6	2.0	0	0	0	0	0	0	1007.0	3.5	0.0	1.5		
04	1	25	02	01	97	2.6	94	11.1	1.3	-1.5	3.9	4.4	5.4	5.9	6.3	7.5	10	0	3.5	7.2	0	0	0	0	0	0	1003.5	3.5	0.0	1.2		
05	7	27	09	02	97	10.9	81	13.1	2.6	-2.0	6.9	6.2	6.0	6.1	6.5	7.5	10	0	8.5	1.9	0	0	0	1	0	0	1000.0	2.6	0.0	1.3		
06	7	23	05	02	97	8.0	75	11.1	7.7	4.0	6.6	6.4	6.8	6.9	6.9	7.4	10	0	0.0	6.7	0	0	0	0	0	0	1022.0	0.0	0.0	0.9		
07	8	18	02	02	97	5.8	90	11.0	0.6	-2.1	5.2	4.6	5.6	6.6	6.8	7.5	10	0	0.1	0.1	0	0	0	0	0	0	1034.5	0.1	0.0	0.4		
08	9	00	00	43	02	6.2	90	14.4	2.0	-1.5	5.6	5.1	6.1	6.8	6.8	7.5	10	0	0.0	8.7	0	0	0	0	0	0	1033.5	0.0	0.0	1.0		
09	4	15	02	02	96	6.6	85	16.1	-0.7	-3.2	3.5	3.8	5.3	6.5	6.7	7.5	40	0	0.0	9.0	0	0	0	0	0	0	1032.0	0.0	3.0	1.1		
10	2	00	00	10	95	5.0	93	15.2	-1.7	-4.3	2.8	3.2	4.9	6.1	6.6	7.5	40	0	0.0	9.0	0	0	0	0	0	0	1035.0	0.0	2.8	1.0		
11	0	00	00	10	94	0.4	93	14.5	-1.7	-4.5	2.4	2.8	4.6	6.0	6.5	7.5	40	0	0.0	8.9	0	0	0	0	0	0	1035.0	0.0	5.5	1.0		
12	1	00	00	10	94	0.8	93	14.8	-1.6	-4.2	2.7	3.0	4.5	5.8	6.4	7.4	40	0	0.0	8.1	0	0	0	0	0	0	1036.5	0.0	4.6	0.8		
13	0	00	00	10	95	-0.3	96	15.0	-1.8	-4.6	2.5	2.9	4.5	5.8	6.3	7.3	40	0	0.0	9.3	0	0	0	0	0	0	1038.5	0.0	5.6	1.2		
14	8	08	09	02	96	4.0	89	5.6	-0.3	-1.1	4.8	4.5	5.4	6.0	6.2	7.2	10	0	0.0	0.0	0	0	0	0	0	0	1040.0	0.0	0.0	0.8		
15	8	04	05	02	96	5.4	89	7.3	3.7	2.8	4.5	4.5	5.1	5.9	6.3	7.1	10	0	0.0	4.0	0	0	0	0	0	0	1039.5	0.0	0.0	1.1		
16	0	03	05	02	97	1.0	89	8.0	-1.9	-5.2	1.7	2.3	4.1	5.5	5.9	7.1	40	0	0.0	9.4	0	0	0	0	0	0	1044.0	0.0	5.9	0.9		
17	0	02	02	02	97	-1.0	97	11.0	-5.2	-7.4	1.1	1.6	3.1	4.9	5.6	7.1	40	0	0.0	9.4	0	0	0	0	0	0	1042.0	0.0	10.0	1.5		
18	0	09	02	02	94	-2.0	95	11.9	-4.3	-6.7	1.1	1.5	3.9	4.5	5.3	6.9	40	0	0.0	9.4	0	0	0	0	0	0	1037.0	0.0	9.6	1.5		
19	8	05	02	02	96	3.0	94	9.9	-2.0	-6.1	2.8	2.8	3.9	4.7	5.2	6.7	40	0	0.0	7.3	0	0	0	0	0	0	1028.5	0.0	0.0	1.0		
20	9	00	00	45	01	1.5	99	7.3	-0.8	-4.5	3.1	2.8	4.4	4.9	5.3	6.6	10	0	0.0	0.0	0	0	0	0	0	0	1021.5	0.0	2.2	0.2		
21	7	21	02	02	21	7.3	86	11.1	1.5	-1.5	3.9	3.7	5.9	4.9	5.3	6.5	10	0	0.1	0.0	0	0	0	0	1	0	1023.5	0.1	0.0	1.2		
22	8	24	09	02	24	10.6	83	12.5	7.3	2.4	7.2	6.6	6.1	5.8	5.5	6.4	10	0	tr	0.0	0	0	0	0	0	0	1023.5	0.0	0.0	0.5		
23	8	21	02	02	21	9.0	94	11.4	4.7	0.2	6.0	5.7	7.0	6.4	6.2	6.6	10	0	0.0	0.0	0	0	0	0	0	0	1028.0	0.0	0.0	1.5		
24	6	18	02	02	18	10.1	76	15.0	8.5	4.1	7.2	7.1	6.4	6.7	6.4	6.7	10	0	0.6	2.5	0	0	0	0	0	0	1020.0	1.0	0.0	1.0		
25	3	18	02	02	96	3.1	95	11.6	-0.5	-2.6	4.4	5.0	7.5	7.0	6.8	6.9	10	0	4.3	5.5	0	0	0	0	0	0	1023.5	5.2	1.2	1.3		
26	7	25	13	01	97	9.8	85	13.6	3.1	1.0	8.4	7.9	6.9	7.4	7.1	7.0	10	0	0.0	7.5	0	0	0	0	0	0	1007.0	0.0	0.0	1.7		
27	6	24	05	02	96	5.5	81	13.1	1.6	-1.9	5.2	5.6	6.9	7.5	7.2	7.2	10	0	0.0	6.9	0	0	0	0	0	0	1019.5	0.0	0.0	0.8		
28	8	21	05	02	97	5.6	92	11.2	1.3	-1.6	5.2	5.2	6.4	7.1	7.4	7.3	10	0	0.0	0.0	0	0	0	0	0	0	1021.0	0.0	0.0	0.6		
29	8	24	13	02	97	3.9	91	12.0	1.0	-2.1	4.9	5.1	6.3	7.0	7.1	7.4	10	0	1.9	0.0	0	0	0	0	0	0	1020.0	2.0	0.0	1.4		
Monthly means						4.5	89	11.5	0.9	-2.1	4.3	4.3	5.4	6.1	6.4	7.2												1025.3				
Monthly totals																				21.6	145.5								18.0	51.8	30.7	
Highest values						10.9		16.1	8.5	4.1	8.4	7.9	7.5	7.5	7.4	7.9			8.5	9.4								5.2	10.0	1.7		
Lowest values						-2.0	72	5.6	-5.2	-7.4	1.1	1.5	3.1	4.5	5.2	6.4																
1971-2000 monthly climatological averages						88	8.3	1.6	-1.3	3.4	3.6	4.5	5.0	5.1	6.1			42.8	67.5										1016.8	45.7	95.2	31.1

DD: date

07GMT observations

N	cloud cover (oktas, 9=obscured)	dd	wind direction (degrees/10)
ff	wind speed (knots)		
ww	present weather code		
1	cloud decreasing	43	fog thinning, sky obscured
2	sky not changing	45	fog, sky obscured
3	cloud increasing	61	continuous slight rain
21	recent rain	71	continuous slight snow
25	recent rain shower	95	light thunderstorm

VV visibility (00-50 metres/100, 94 very poor, 95 poor, 96 moderate, 97 good)

Soil temperatures are for 0700GMT beneath bare soil (5, 10, 20cm) or grass (30, 50, 100cm)

09GMT observations

Temp	temperature (degC)	RH	relative humidity (%)
E	state of ground (X0 hail, X1 to X6 snow lying, 10 moist, 20 wet, 40 frozen)		
SS	snow depth (cm)		
Press	air pressure (mb)		

24 hour readings

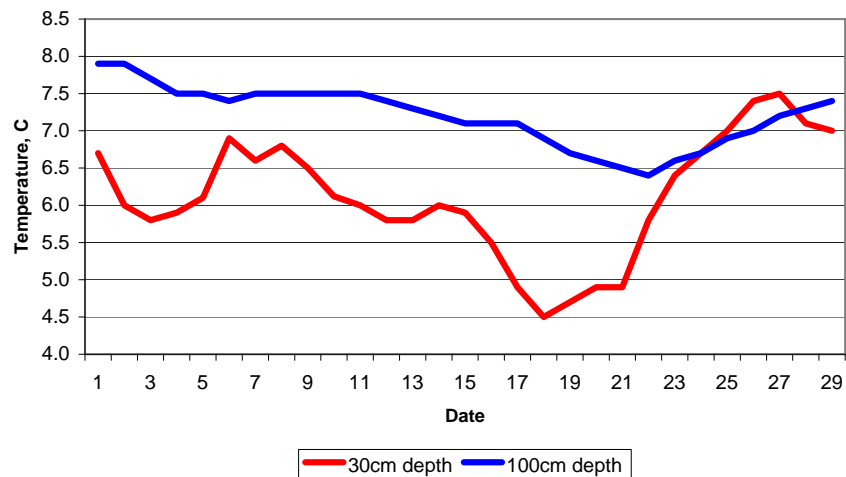
Max	maximum temperature (degC) beginning 09GMT	Min	minimum temperature (degC) ending 09GMT
Gmin	grass minimum temperature (degC) ending 09GMT	Rain	precipitation beginning 09GMT
Sun	sunshine (hours) sunrise-sunset	Rain hrs	hours of rainfall (>0.1mm/h) 09-09GMT
Fr. Hrs	hours of air frost (00-24GMT)	Pch Evap	Piche evaporation (ml) beginning 09GMT

Days with

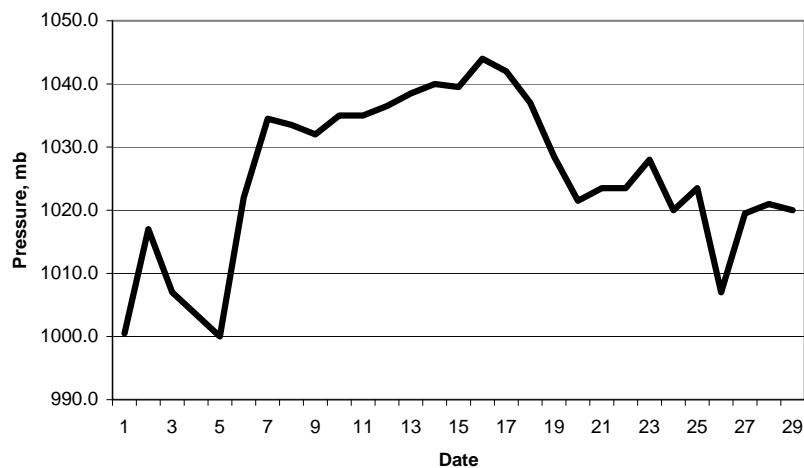
S	snow(5) or sleet(1) falling	L	50% snow cover at 09GMT	H	hail or ice pellets
T	thunder heard	G	gale	F	fog at 09GMT

This information (and data for earlier months) is also available at <http://www.met.rdg.ac.uk/~brugge>

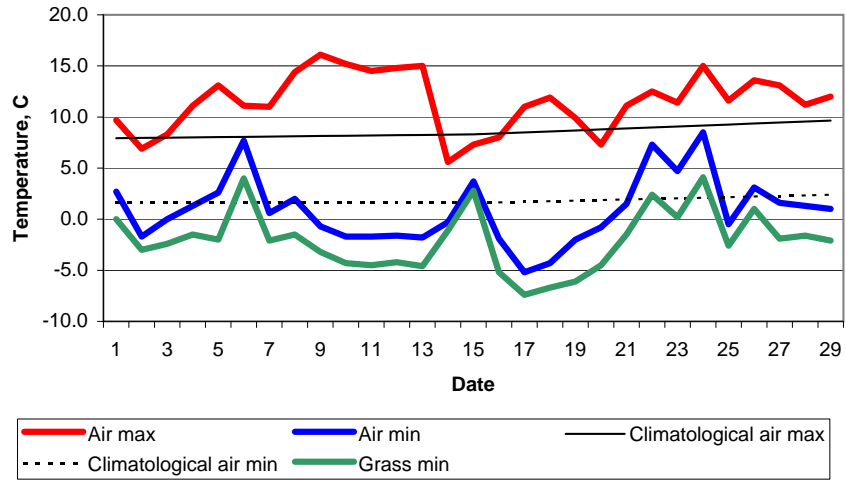
**Daily soil temperatures, 0700GMT**



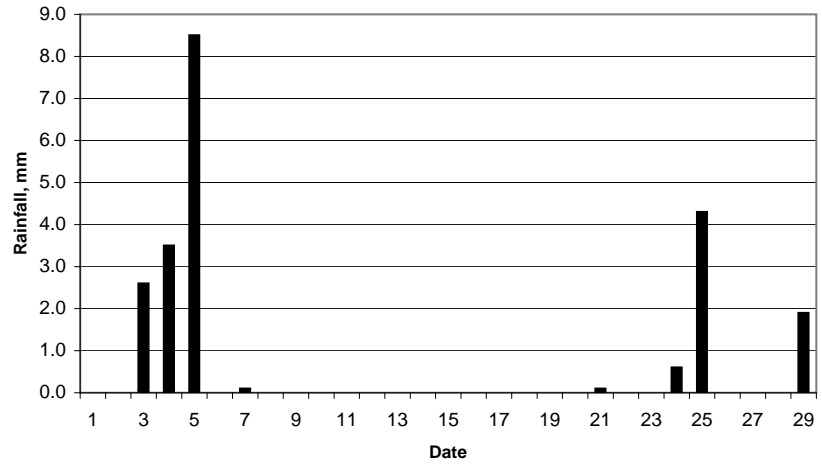
**Mean sea level pressure, 0900GMT**



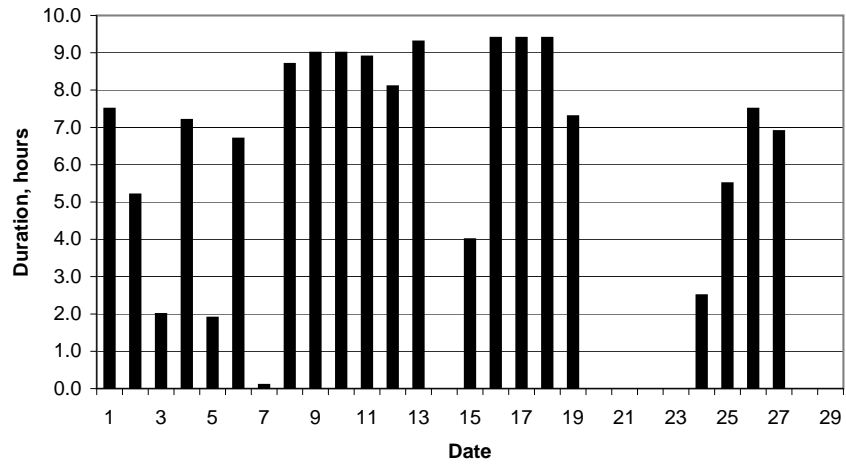
### Daily temperature extremes



### Daily rainfall



### Daily sunshine



### Daily evaporation

