

MAIDENHEAD METEOROLOGICAL OBSERVATIONS FOR DECEMBER 2023

DD	N	dd	ff	ww	VV	0900GMT Temp	RH	Temperature			Soil temperatures (depth in cm)						E	SS	Rain	Sun	S	L	H	T	G	F	Press	Rain hrs	Fr. hrs	Pch Evap		
								Max	Min	Gmin	5	10	20	30	50	100																
01	8	05	05	05	96	0.0	85	3.5	-0.9	-4.9	1.4	2.3	3.8	5.8	6.8	9.8	40	0	0.0	0.3	0	0	0	0	0	0	1008.0	0.0	10.7	0.6	Number of	
02	8	00	00	46	09	-1.3	97	3.1	-1.3	-4.1	2.1	2.8	3.9	5.5	6.4	9.5	40	0	0.3	0.0	0	0	0	0	0	1	1016.5	0.4	21.3	0.1	days with	
03	8	13	02	02	96	3.1	94	8.0	-1.7	-2.0	2.8	3.4	4.0	5.1	6.1	9.1	10	0	10.7	0.0	0	0	0	0	0	1011.0	10.7	2.1	0.3	2023 normal		
04	8	13	02	02	97	6.7	93	7.9	3.1	1.8	5.8	5.9	5.6	6.0	6.1	9.0	20	0	5.6	0.0	0	0	0	0	0	995.5	8.8	0.0	0.0	Snow/sleet falling		
05	8	31	02	21	97	5.5	93	6.9	5.5	4.3	5.6	6.0	6.2	6.6	6.6	8.8	20	0	0.7	0.0	0	0	0	0	0	1007.0	1.2	0.0	0.1	0 2.0		
06	0	00	00	10	94	-0.6	87	7.1	-0.6	-3.4	3.1	4.0	5.5	6.6	6.7	8.8	10	0	1.6	4.9	0	0	0	0	0	1018.0	0.9	3.3	0.3	50% snow cover 09GMT		
07	8	13	05	25	97	7.0	90	8.4	-0.6	-2.0	5.4	5.5	5.5	6.1	6.5	8.8	20	0	4.4	0.0	0	0	0	1	0	1009.5	4.0	0.0	0.3	0 1.1		
08	0	23	02	02	97	2.2	89	10.4	2.1	-1.0	4.0	4.9	5.9	6.6	6.7	8.7	20	0	11.4	2.0	0	0	0	0	0	1004.5	6.0	0.0	0.4	Hail or ice pellets		
09	8	18	05	61	94	10.0	92	12.5	2.2	-0.4	6.8	6.6	6.3	6.5	6.7	8.6	20	0	1.0	0.3	0	0	0	0	0	992.0	1.0	0.0	1.2	0 0.4		
10	7	23	02	02	97	8.5	84	11.1	7.3	2.5	5.7	6.1	6.5	7.1	7.1	8.6	20	0	3.6	0.2	0	0	0	0	0	1005.0	3.0	0.0	1.1	Thunder		
11	7	27	05	02	97	9.4	77	11.0	8.5	2.8	6.7	7.0	7.2	7.4	7.2	8.6	10	0	9.4	0.8	0	0	0	0	0	1004.0	5.1	0.0	0.4	1 0.2		
12	7	18	02	10	94	7.3	92	10.9	5.2	0.6	7.1	7.5	7.5	7.6	7.5	8.7	20	0	9.6	0.9	0	0	0	0	0	999.0	2.4	0.0	0.3	Gale		
13	8	31	05	02	97	7.7	88	8.2	7.2	3.2	7.3	7.6	7.6	7.8	7.7	8.8	20	0	0.7	0.0	0	0	0	0	0	1000.5	1.2	0.0	0.6	0 0.1		
14	8	31	02	02	97	3.4	89	8.2	2.0	-1.7	5.1	5.5	6.4	7.5	7.6	8.8	20	0	0.5	0.3	0	0	0	0	0	1021.0	0.3	0.0	0.1	Fog at 09GMT		
15	7	27	02	02	97	3.5	93	10.0	2.6	-1.4	4.9	5.5	6.4	7.1	7.4	8.9	20	0	tr	0.0	0	0	0	0	0	1036.5	0.0	0.0	0.3	1 1.8		
16	8	23	02	10	96	9.9	92	11.1	3.1	0.0	7.2	7.0	6.8	7.2	7.3	8.9	10	0	0.0	0.0	0	0	0	0	0	1039.5	0.0	0.0	0.5	Air frost		
17	8	23	02	02	97	9.5	79	11.5	9.5	7.4	7.9	8.0	8.1	7.9	7.6	8.8	10	0	0.0	2.4	0	0	0	0	0	1035.0	0.0	0.0	1.2	5 9.3		
18	7	23	02	02	97	10.5	75	12.8	9.3	5.6	7.8	8.0	8.0	8.1	7.9	8.9	10	0	8.1	0.0	0	0	0	0	0	1030.5	3.0	0.0	0.3	Ground frost		
19	8	23	02	61	95	11.1	90	12.5	10.5	8.0	10.1	10.0	9.5	8.8	8.3	9.0	20	0	6.3	0.0	0	0	0	0	0	1019.0	4.4	0.0	0.3	10 17.2		
20	5	27	02	02	97	6.4	90	12.2	3.9	-0.5	6.1	6.1	7.2	8.3	8.5	9.1	20	0	0.2	0.5	0	0	0	0	0	1020.5	0.4	0.0	0.9	0.2mm precipitation		
21	8	27	09	50	96	11.5	85	13.8	6.4	2.7	8.7	8.6	8.4	8.3	8.1	9.1	10	0	0.8	0.4	0	0	0	0	0	1007.0	0.3	0.0	0.8	26 16.1		
22	8	27	09	02	97	11.4	72	12.4	9.3	6.2	8.4	8.5	8.5	8.6	8.5	9.1	10	0	tr	0.1	0	0	0	0	0	1013.0	0.0	0.0	1.6	1.0mm precipitation		
23	7	27	05	02	97	10.4	71	13.4	9.0	6.0	7.3	7.9	8.2	8.7	8.5	9.2	10	0	0.3	0.8	0	0	0	0	0	1014.5	0.6	0.0	1.3	18 11.7		
24	8	23	09	02	97	13.4	83	15.2	10.4	7.5	10.0	9.8	9.3	9.0	8.6	9.3	10	0	2.0	0.0	0	0	0	0	0	1007.0	1.0	0.0	1.0	5.0mm precipitation		
25	7	27	02	02	97	11.2	86	12.5	11.2	9.1	10.3	10.5	10.2	9.7	9.1	9.4	10	0	2.1	0.0	0	0	0	0	0	1009.0	2.5	0.0	0.6	8 4.8		
26	0	23	02	02	97	4.8	83	11.5	4.8	0.5	7.2	8.0	9.0	9.6	9.3	9.5	10	0	1.2	1.2	0	0	0	0	0	1016.5	4.2	0.0	0.4	No sunshine		
27	8	18	09	02	97	11.5	89	12.1	4.4	0.1	8.4	8.5	8.4	8.9	8.9	9.6	10	0	3.8	0.0	0	0	0	0	0	1007.0	3.9	0.0	0.9	15 12.7		
28	8	23	05	25	97	10.4	76	12.2	9.3	5.6	8.1	8.5	8.8	9.0	8.9	9.6	10	0	1.4	0.0	0	0	0	0	0	1006.5	0.7	0.0	1.6	The warmest December since		
29	6	23	05	02	97	8.7	83	10.8	8.7	5.5	7.5	7.5	8.3	8.9	8.8	9.6	10	0	0.6	1.7	0	0	0	0	0	1007.0	1.2	0.0	1.2	2015 (1.9 degC milder) and		
30	8	18	05	60	96	9.6	92	12.1	5.1	0.5	7.0	6.5	7.2	8.8	8.8	9.6	10	0	8.8	0.0	0	0	0	0	0	1007.5	5.7	0.0	1.0	marginally warmer than		
31	7	18	05	02	97	5.9	89	10.3	5.6	1.0	6.7	6.5	8.0	8.7	8.7	9.6	20	0	3.3	0.5	0	0	0	0	0	987.0	4.5	0.0	0.8	November 2023. One of the		
Monthly means						7.4	86	10.4	5.2	1.9	6.5	6.8	7.2	7.7	7.7	9.1											1011.4				four warmest Decembers of	
Monthly totals																				98.4	17.3							77.4	37.4	20.5	the last 100 years. The	
Highest values						13.4		15.2	11.2	9.1	10.3	10.5	10.2	9.7	9.3	9.8			11.4	4.9							10.7	21.3	1.6	and 1953, with 15 sunless		
Lowest values						-1.3	71	3.1	-1.7	-4.9	1.4	2.3	3.8	5.1	6.1	8.6																The wettest December since
1991-2020 monthly climatological averages						90	8.3	2.6	-0.1	4.9	4.9	5.8	6.6	6.9	8.5					66.0	51.5							1016.0	59.9	72.2	20.7	2013 with 26 rain days (the
																															most since November 2009).	
																																No snow fall and only 5 days
																																had an air frost.

Key
 DD: date

07GMT observations

N	cloud cover (oktas, 9=obscured)	dd	wind direction (degrees/10)
ff	wind speed (knots)		
ww	present weather code		
1	cloud decreasing	41	fog patches
2	sky not changing	45	fog
3	cloud increasing	50	intermittent slight drizzle
10	mist	60	intermittent slight rain
21	recent rain	61	continuous slight rain
VV	visibility (00-50 metres/100, 94 very poor, 95 poor, 96 moderate, 97 good)		

Soil temperatures are for 0700GMT beneath bare soil (5, 10, 20cm) or grass (30, 50, 100cm)

09GMT observations

Temp	temperature (degC)	RH	relative humidity (%)
E	state of ground (10 moist, 20 wet, 40 frozen, X1-X7 snow)	SS	snow depth (cm)
Press	air pressure (mb)		

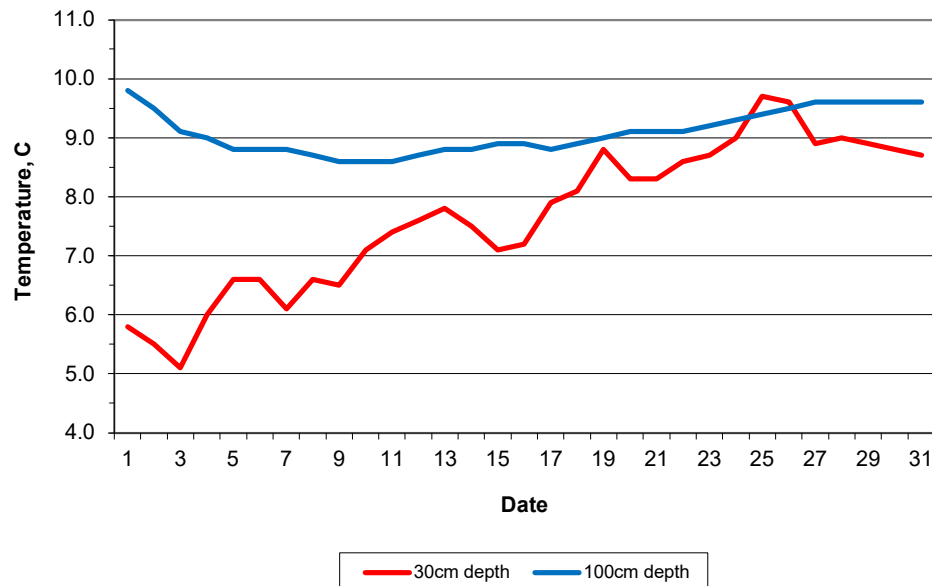
24 hour readings

Max	maximum temperature (degC) beginning 09GMT	Min	minimum temperature (degC) ending 09GMT
Gmin	grass minimum temperature (degC) ending 09GMT	Rain	precipitation beginning 09GMT
Sun	sunshine (hours) sunrise-sunset	Rain hrs	hours of rainfall (>0.1mm/h) 09-09GMT
Fr. Hrs	hours of air frost (00-24GMT)	Pch Evap	Piche evaporation (ml) beginning 09GMT

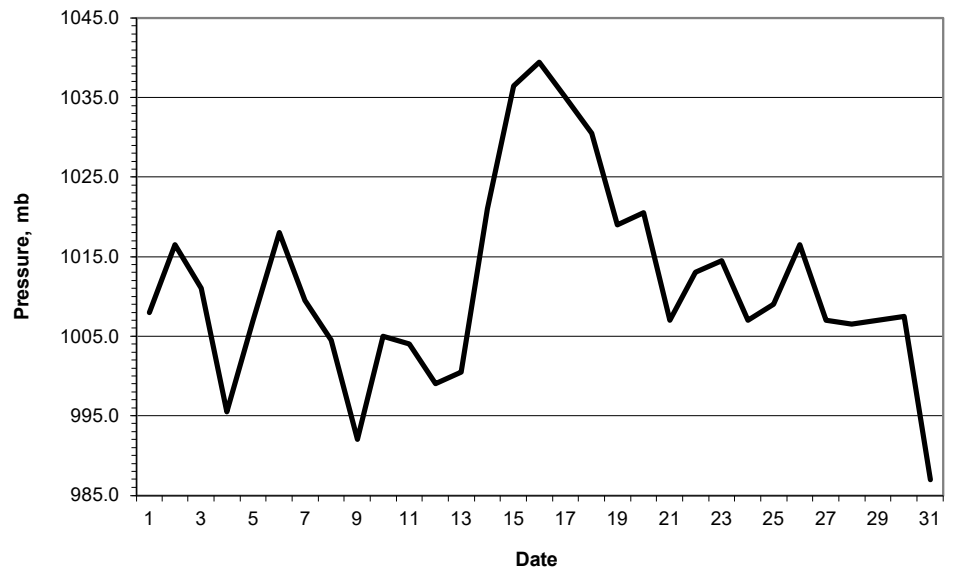
Days with

S	snow(5) or sleet(1) falling	L	50% snow cover at 09GMT	H	hail or ice pellets
T	thunder heard	G	gale	F	fog at 09GMT

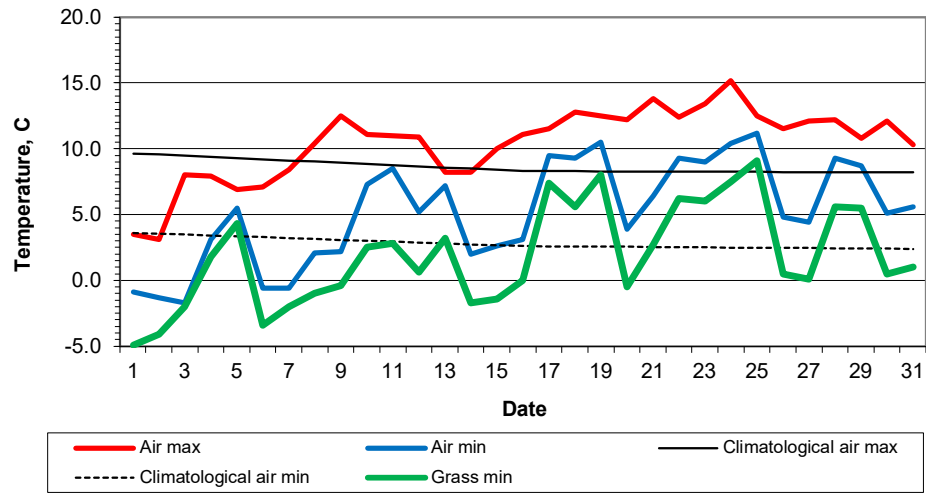
Daily soil temperatures, 0700GMT



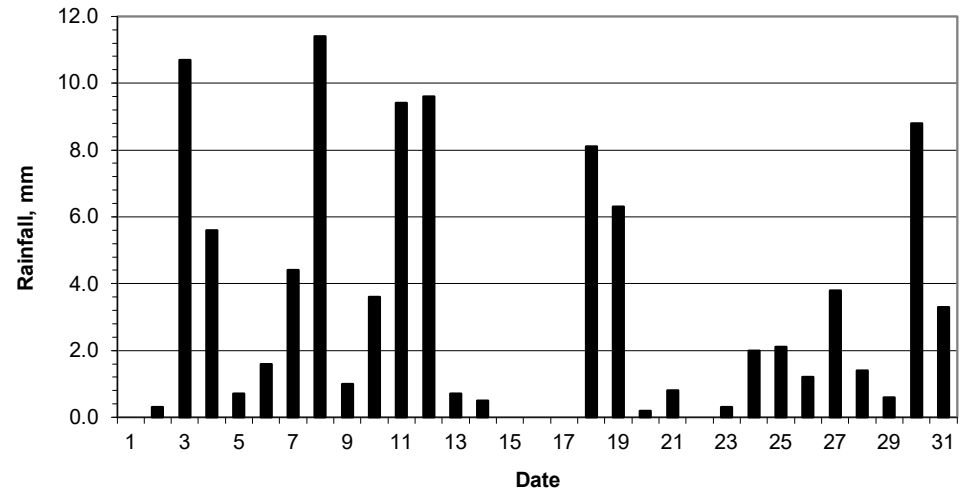
Mean sea level pressure, 0900GMT



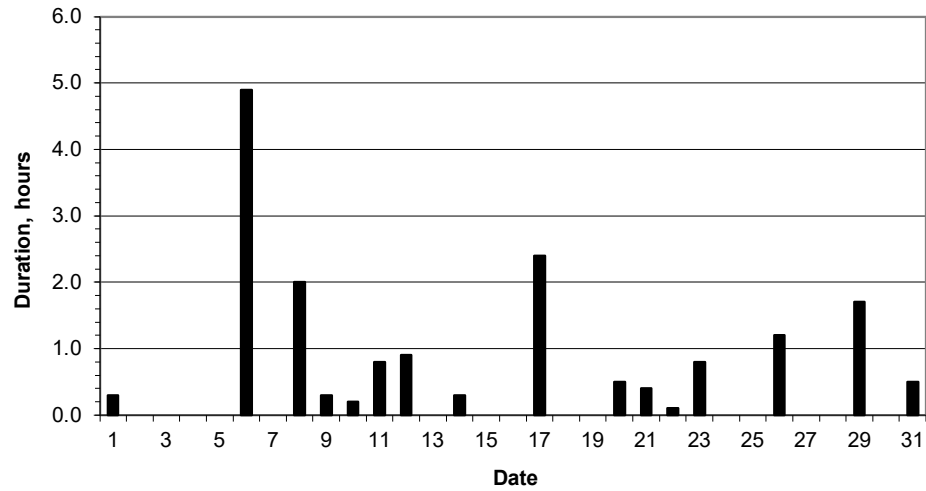
Daily temperature extremes



Daily rainfall



Daily sunshine



Daily evaporation

