

MAIDENHEAD METEOROLOGICAL OBSERVATIONS FOR DECEMBER 2022

DD	N	dd	ff	ww	VV	0900GMT Temp	RH	Temperature			Soil temperatures (depth in cm)						E	SS	Rain	Sun	S	L	H	T	G	F	Press	Rain hrs	Fr. hrs	Pch Evap		
								Max	Min	Gmin	5	10	20	30	50	100																
01	8	00	00	44	03	0.7	90	6.0	-0.1	-1.8	4.9	5.3	7.1	8.5	9.0	10.9	10	0	tr	0.2	0	0	0	0	0	1	1030.5	0.0	0.2	0.2	Number of	
02	8	36	02	10	96	3.9	96	7.8	0.7	0.5	6.1	6.2	7.1	8.1	8.6	10.8	10	0	0.0	2.6	0	0	0	0	0	0	1026.5	0.0	0.0	0.9	days with	
03	8	05	09	02	97	6.0	76	7.8	3.3	2.8	0.8	6.0	7.0	8.0	8.5	10.5	10	0	0.1	0.0	0	0	0	0	0	0	1022.0	0.1	0.0	1.1	2022 normal	
04	8	05	05	21	97	4.3	87	6.2	3.8	2.0	5.6	5.6	6.8	8.0	8.3	10.4	10	0	tr	0.0	0	0	0	0	0	0	1017.0	0.0	0.0	0.5	Snow/sleet falling	
05	8	36	02	02	97	6.2	80	8.2	4.1	3.2	5.6	5.7	6.6	7.6	8.0	10.2	10	0	0.0	0.0	0	0	0	0	0	0	1022.5	0.0	0.0	0.8	2 2.0	
06	6	05	02	02	97	4.0	83	7.0	3.7	0.7	5.5	5.6	6.6	7.6	8.0	10.1	10	0	0.0	2.2	0	0	0	0	0	0	1024.5	0.0	0.0	0.5	50% snow cover 09GMT	
07	5	31	02	02	97	0.8	86	4.9	0.1	-3.4	3.8	4.1	5.8	7.1	7.7	10.0	10	0	0.0	6.2	0	0	0	0	0	0	1023.5	0.0	5.0	0.8	3 1.1	
08	0	00	00	02	97	-4.3	82	3.0	-4.7	-7.9	1.6	2.2	4.1	6.1	7.1	9.8	40	0	0.0	6.9	0	0	0	0	0	0	1013.0	0.0	18.1	0.8	Hail or ice pellets	
09	8	31	02	10	96	0.1	88	2.7	-5.3	-8.8	1.1	1.6	3.1	5.2	6.4	9.6	40	0	0.0	3.1	0	0	0	0	0	0	1009.5	0.0	15.2	0.2	0 0.4	
10	0	00	00	02	96	-4.7	84	2.7	-5.2	-8.2	0.7	1.1	2.6	4.6	5.7	9.1	40	0	0.0	7.1	0	0	0	0	0	0	1010.5	0.0	20.1	0.0	Thunder	
11	9	00	00	45	02	-2.6	85	0.5	-4.7	-7.6	0.6	0.8	2.4	4.1	5.2	8.9	40	0	1.0	0.0	5	0	0	0	0	1	1008.5	1.8	19.3	0.0	0 0.2	
12	8	00	00	10	94	-0.1	91	0.7	-2.6	-1.4	1.4	1.4	2.5	4.2	5.0	8.5	X3	2	0.0	0.0	5	1	0	0	0	0	1009.0	0.0	11.2	0.0	Gale	
13	8	05	02	10	96	-1.9	85	1.4	-3.3	-5.5	1.1	1.6	2.6	4.0	5.0	8.2	X2	1	0.0	0.0	0	1	0	0	0	0	1009.0	0.0	16.2	0.0	0 0.1	
14	2	36	01	02	97	-1.7	77	1.2	-1.9	-4.5	1.1	1.4	2.5	3.9	4.7	8.0	X2	1	0.0	1.9	0	1	0	0	0	0	1005.5	0.0	15.1	0.0	Fog at 09GMT	
15	0	00	00	02	97	-7.0	76	0.6	-7.2	-11.0	0.7	0.9	2.1	3.5	4.4	7.7	X1	<1	0.0	6.4	0	0	0	0	0	0	1011.5	0.0	22.5	0.0	3 1.8	
16	0	27	02	02	97	-5.7	82	0.6	-7.0	-10.4	0.3	0.6	1.7	3.0	4.1	7.6	X1	<1	0.0	6.0	0	0	0	0	0	0	1018.5	0.0	21.8	0.0	Air frost	
17	4	09	02	03	97	-5.0	83	2.0	-6.2	-9.4	-0.1	0.1	1.4	2.8	3.7	7.4	X1	<1	0.0	0.8	0	0	0	0	0	0	1022.5	0.0	18.5	0.0	13 9.3	
18	8	09	02	02	96	0.8	88	12.9	-5.0	-8.5	-0.1	0.1	1.2	2.6	3.5	7.0	X1	<1	13.9	0.0	0	0	0	0	0	0	1019.0	12.0	6.8	0.1	Ground frost	
19	8	23	09	02	97	12.7	89	13.3	0.8	-0.4	4.9	3.7	2.9	3.0	3.4	6.8	20	0	8.6	0.0	0	0	0	0	0	0	1007.0	10.6	0.0	0.6	20 17.2	
20	1	23	02	01	97	7.8	90	10.0	7.8	4.5	7.2	7.2	7.0	5.6	5.7	6.6	20	0	0.1	5.9	0	0	0	0	0	0	1007.5	0.1	0.0	0.2	0.2mm precipitation	
21	8	18	02	02	97	7.8	94	10.5	1.9	-1.5	0.4	3.7	4.5	5.4	5.4	6.9	10	0	0.1	0.3	0	0	0	0	0	0	1007.0	0.1	0.0	0.2	12 16.1	
22	8	13	05	50	94	7.0	93	11.4	4.7	0.2	5.6	5.3	5.5	5.6	5.5	7.1	10	0	12.5	0.0	0	0	0	0	0	0	1004.0	3.4	0.0	0.2	1.0mm precipitation	
23	8	09	05	61	94	8.6	93	12.5	7.0	6.0	7.0	6.7	6.8	6.4	6.0	7.1	20	0	4.5	0.4	0	0	0	0	0	0	999.0	2.0	0.0	0.3	11 11.7	
24	6	23	02	11	09	4.2	92	10.7	4.1	-0.8	4.5	5.1	6.0	6.6	6.4	7.4	20	0	0.3	0.0	0	0	0	0	0	1	1010.5	0.2	0.0	0.2	5.0mm precipitation	
25	8	23	05	02	97	10.4	90	11.7	3.7	-0.8	6.7	6.6	6.8	6.7	6.5	7.6	20	0	1.0	0.0	0	0	0	0	0	0	1007.5	1.2	0.0	0.7	4 4.8	
26	1	27	02	02	97	1.8	79	7.4	1.8	-2.0	5.2	6.1	7.1	7.2	6.8	7.6	10	0	0.0	5.2	0	0	0	0	0	0	1016.0	0.0	0.0	0.2	No sunshine	
27	7	23	02	02	97	2.4	88	11.0	-0.3	-3.5	3.1	3.3	4.6	6.2	6.6	7.8	10	0	4.5	0.2	0	0	0	0	0	0	1022.0	10.0	1.6	0.7	14 12.7	
28	8	23	05	60	96	10.5	91	11.9	2.4	4.5	7.7	7.2	6.9	6.8	6.6	7.8	20	0	2.5	0.0	0	0	0	0	0	0	1004.5	3.2	0.0	1.0	Overall a cool month, notably	
29	7	23	05	02	97	8.3	80	9.5	8.1	4.1	6.2	6.6	7.2	7.2	7.0	7.8	10	0	1.0	2.8	0	0	0	0	0	0	1000.5	0.5	0.0	1.0	cold around mid-month but	
30	8	13	09	60	97	9.2	85	13.9	1.4	-2.3	6.1	5.8	6.1	6.6	7.0	7.9	10	0	1.7	0.0	0	0	0	0	0	0	992.5	1.8	0.0	0.9	then turning very mild at	
31	8	23	05	02	97	13.8	83	13.8	9.2	6.6	8.9	8.3	8.0	7.5	7.1	8.0	10	0	15.1	0.0	0	0	0	0	0	0	1000.0	9.2	0.0	0.9	times. The coldest December	
Monthly means						3.2	86	7.2	0.5	-2.1	3.7	4.1	4.9	5.8	6.2	8.4												1012.3				since 2010 with the lowest
Monthly totals																				66.9	58.2							56.2	191.6	13.0	December temperature since	
Highest values						13.8		13.9	9.2	6.6	8.9	8.3	8.0	8.5	9.0	10.9			15.1	7.1								12.0	22.5	1.1	and rainfall totals were close	
Lowest values						-7.0	76	0.5	-7.2	-11.0	-0.1	0.1	1.2	2.6	3.4	6.6																to normal although little
1991-2020 monthly climatological averages																																precipitation fell during the
						90	8.3	2.6	-0.1	4.9	4.9	5.8	6.6	6.9	8.5			66.0	51.5									1016.0	59.9	72.2	20.7	first half - and some of this
																																was snow that persisted on
																																the ground for about a week.

Key
 DD: date

07GMT observations

N	cloud cover (oktas, 9=obscured)	dd	wind direction (degrees/10)
ff	wind speed (knots)		
ww	present weather code		
1	cloud decreasing	41	fog patches
2	sky not changing	45	fog
3	cloud increasing	50	intermittent slight drizzle
10	mist	60	intermittent slight rain
21	recent rain	61	continuous slight rain
VV	visibility (00-50 metres/100, 94 very poor, 95 poor, 96 moderate, 97 good)		

Soil temperatures are for 0700GMT beneath bare soil (5, 10, 20cm) or grass (30, 50, 100cm)

09GMT observations

Temp	temperature (degC)	RH	relative humidity (%)
E	state of ground (10 moist, 20 wet, 40 frozen, X1-X7 snow)	SS	snow depth (cm)
Press	air pressure (mb)		

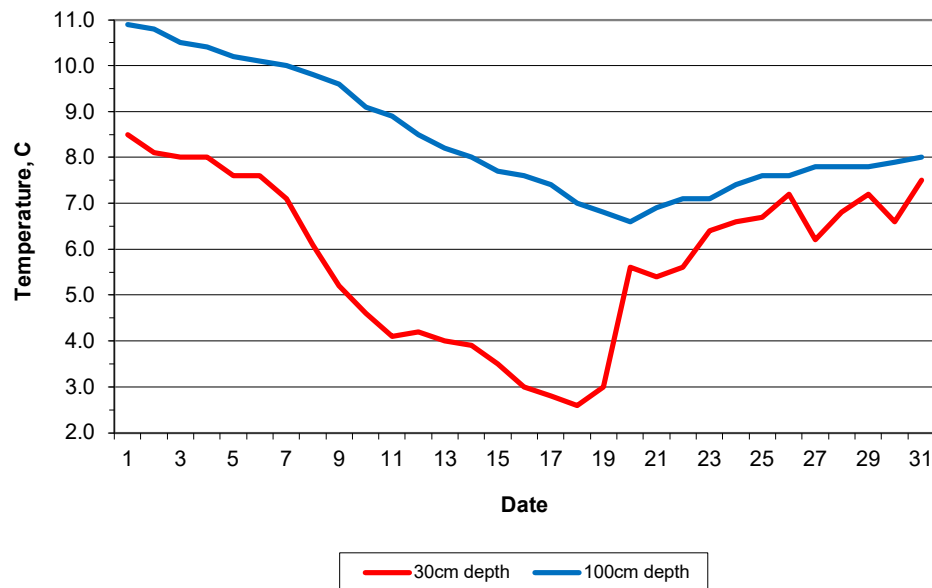
24 hour readings

Max	maximum temperature (degC) beginning 09GMT	Min	minimum temperature (degC) ending 09GMT
Gmin	grass minimum temperature (degC) ending 09GMT	Rain	precipitation beginning 09GMT
Sun	sunshine (hours) sunrise-sunset	Rain hrs	hours of rainfall (>0.1mm/h) 09-09GMT
Fr. Hrs	hours of air frost (00-24GMT)	Pch Evap	Piche evaporation (ml) beginning 09GMT

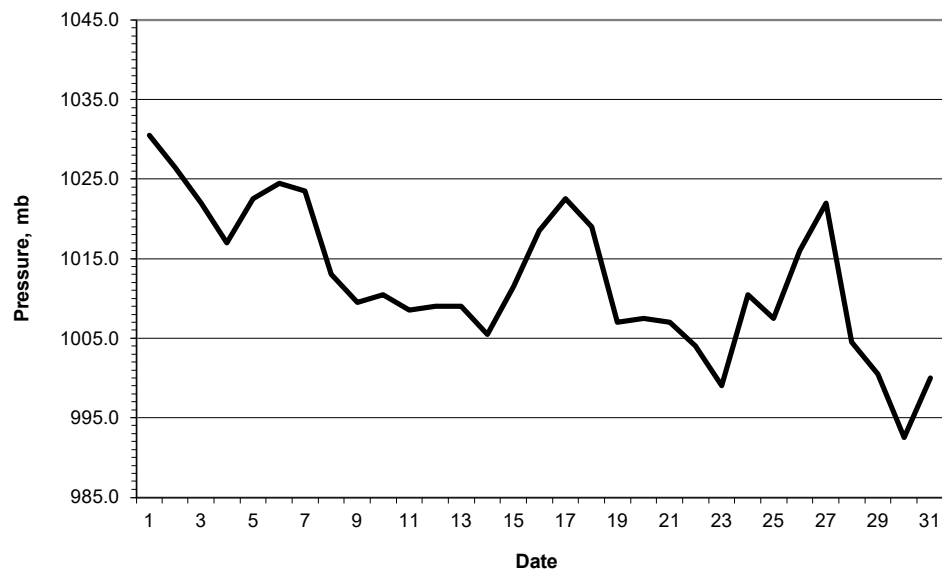
Days with

S	snow(5) or sleet(1) falling	L	50% snow cover at 09GMT	H	hail or ice pellets
T	thunder heard	G	gale	F	fog at 09GMT

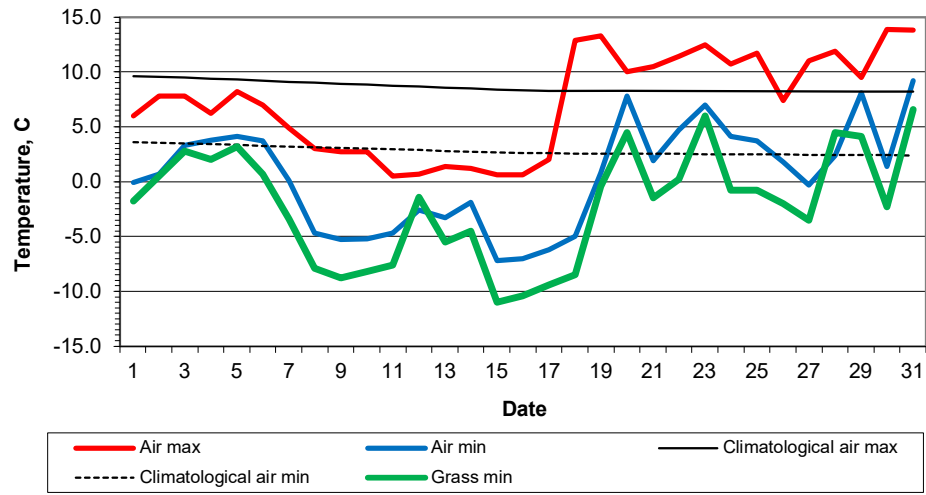
Daily soil temperatures, 0700GMT



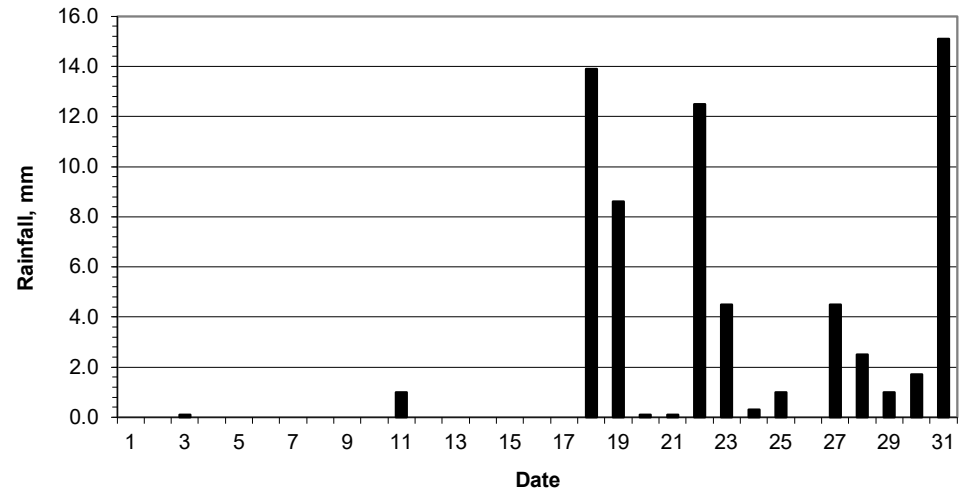
Mean sea level pressure, 0900GMT



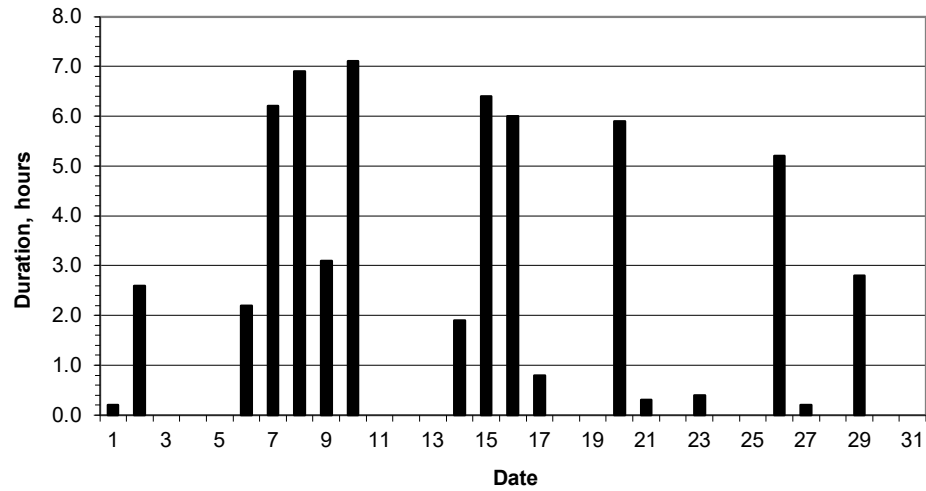
Daily temperature extremes



Daily rainfall



Daily sunshine



Daily evaporation

