

MAIDENHEAD METEOROLOGICAL OBSERVATIONS FOR APRIL 2023

DD	N	dd	ff	ww	VV	0900GMT		Temperature			Soil temperatures (depth in cm)						E	SS	Rain	Sun	S	L	H	T	G	F	Press	Rain hrs	Fr. hrs	Pch Evap			
						Temp	RH	Max	Min	Gmin	5	10	20	30	50	100																	
01	8	36	05	02	97	8.8	89	11.4	8.8	7.9	9.9	10.0	10.3	10.0	9.5	8.9	20	0	0.1	0.9	0	0	0	0	0	0	1005.0	0.1	0.0	1.3	Number of days with		
02	8	05	05	02	97	7.3	69	11.6	6.9	4.2	8.4	9.0	9.0	9.9	9.5	9.1	10	0	0.0	6.1	0	0	0	0	0	1026.0	0.0	0.0	1.7				
03	7	36	02	03	97	7.1	70	14.1	0.0	-2.0	5.8	6.4	7.7	9.0	9.1	9.1	10	0	0.0	10.0	0	0	0	0	0	1031.0	0.0	0.0	2.4	2023	normal		
04	0	09	02	02	97	8.0	55	16.0	-1.1	-4.8	4.4	5.0	6.9	8.6	8.8	9.0	10	0	0.0	12.1	0	0	0	0	0	1028.0	0.0	2.5	2.4	Snow/sleet falling			
05	7	18	02	02	97	7.6	69	15.2	2.9	-1.0	6.3	6.7	7.3	8.5	8.6	9.0	10	0	3.7	1.0	0	0	0	0	0	1022.0	6.5	0.0	1.7	0	0.5		
06	8	27	02	02	97	10.9	89	15.1	7.6	6.9	9.4	9.4	9.3	9.1	8.7	8.9	10	0	7.6	2.4	0	6	1	0	0	1013.0	1.8	0.0	0.8	50% snow cover 09GMT			
07	6	31	02	02	97	10.0	71	16.1	3.6	-1.2	6.3	7.1	8.1	9.0	8.8	9.0	10	0	0.0	11.0	0	0	0	0	0	1021.5	0.0	0.0	1.7	0	0.0		
08	2	09	02	02	97	9.5	76	17.2	1.0	-2.3	5.9	6.8	8.0	9.1	9.0	9.0	10	0	0.0	10.5	0	0	0	0	0	1026.5	0.0	0.0	1.9	Hail or ice pellets			
09	7	00	00	10	96	8.5	85	17.6	5.1	0.0	7.3	8.0	8.4	9.3	9.0	9.0	10	0	5.8	6.0	0	0	0	0	0	1023.0	7.9	0.0	1.9	2	1.2		
10	8	18	05	61	96	11.4	87	16.0	8.5	4.2	10.1	10.2	10.4	10.0	9.3	9.1	20	0	1.9	5.4	0	0	0	0	0	1008.5	1.2	0.0	1.9	Thunder			
11	0	23	05	02	97	11.3	61	13.8	3.6	-1.0	7.3	8.0	9.0	10.0	9.6	9.1	10	0	7.7	5.0	0	0	0	0	0	1013.5	8.0	0.0	1.3	1	1.2		
12	3	23	02	03	97	9.3	64	11.4	3.1	-1.4	7.3	8.0	9.0	9.8	9.5	9.3	20	0	3.2	6.1	0	0	0	0	0	994.5	2.3	0.0	1.6	Gale			
13	0	27	09	02	97	10.8	56	15.2	5.7	1.5	7.2	8.0	8.9	9.6	9.4	9.3	10	0	1.5	11.0	0	0	4	0	0	1002.5	1.5	0.0	2.4	0	0.0		
14	8	13	05	80	96	8.0	88	11.1	2.7	-1.8	7.3	7.6	8.2	9.8	9.4	9.4	20	0	4.9	1.3	0	0	0	0	0	1003.0	4.8	0.0	0.7	Fog at 09GMT			
15	8	36	05	02	97	8.9	81	16.0	6.6	4.3	8.3	8.5	8.9	9.3	9.1	9.4	20	0	0.0	5.8	0	0	0	0	0	1018.0	0.0	0.0	0.9	0	0.0		
16	7	27	02	02	97	12.2	70	16.7	6.7	2.2	8.3	8.5	9.0	9.4	9.1	9.3	10	0	1.0	0.5	0	0	0	0	0	1026.5	0.6	0.0	1.3	Air frost			
17	7	09	02	02	97	12.7	79	17.9	9.3	6.0	9.8	10.0	10.5	10.6	9.6	9.4	10	0	0.0	5.5	0	0	0	0	0	1028.0	0.0	0.0	1.8	1	1.6		
18	1	05	09	02	97	11.5	57	13.9	7.9	1.5	9.8	10.0	10.3	10.7	10.0	9.5	10	0	0.0	4.0	0	0	0	0	0	1028.0	0.0	0.0	2.0	Ground frost			
19	7	09	05	02	96	11.7	67	17.0	7.7	4.0	9.0	9.5	10.0	10.4	9.7	9.7	10	0	0.0	6.5	0	0	0	0	0	1025.5	0.0	0.0	2.6	10	6.7		
20	0	05	05	02	97	12.4	38	16.9	4.1	0.5	8.9	9.5	9.6	9.9	9.6	9.7	10	0	1.8	11.0	0	0	0	0	0	1023.5	1.4	0.0	2.8	0.2mm precipitation			
21	8	36	02	60	97	7.6	78	10.7	6.4	2.5	8.7	9.0	9.5	10.2	9.6	9.7	10	0	2.8	3.0	0	0	0	0	0	1012.0	3.2	0.0	0.6	15	12.0		
22	8	13	02	02	96	7.6	88	15.7	0.7	-2.3	8.7	8.9	9.3	9.1	9.5	9.8	10	0	0.6	4.5	0	0	0	0	0	1006.0	0.2	0.0	1.8	1.0mm precipitation			
23	8	18	02	02	97	11.4	73	16.2	7.6	7.5	9.5	10.0	10.2	10.4	9.5	9.8	10	0	3.9	5.0	0	0	0	0	0	1001.0	2.8	0.0	1.2	14	9.0		
24	7	09	05	02	97	10.2	70	13.1	5.9	0.6	8.8	9.2	10.0	10.2	9.7	9.7	10	0	15.1	2.4	0	0	0	0	0	1010.0	4.2	0.0	0.8	5.0mm precipitation			
25	0	05	02	02	97	8.5	62	13.1	0.8	-2.6	6.6	7.6	8.9	9.9	9.8	9.8	20	0	0.0	9.9	0	0	0	0	0	1019.0	0.0	0.0	1.9	5	3.1		
26	8	09	05	02	97	8.6	56	12.3	4.6	1.9	8.3	8.7	9.5	9.9	9.6	9.8	10	0	0.0	0.4	0	0	0	0	0	1018.5	0.0	0.0	1.6	No sunshine			
27	8	09	05	02	97	10.3	62	14.3	3.8	0.5	8.0	8.3	9.0	9.6	9.5	9.8	10	0	9.5	0.0	0	0	0	0	0	1016.5	8.5	0.0	1.0	1	3.1		
28	8	27	09	02	97	13.8	92	18.9	9.9	7.1	10.7	10.5	10.4	9.9	9.4	9.6	10	0	0.1	2.3	0	0	0	0	0	1010.5	0.1	0.0	1.1	Air temperatures close to normal			
29	4	05	02	02	97	13.2	68	20.2	5.9	3.0	9.2	9.9	10.5	10.7	10.1	9.7	10	0	0.0	10.1	0	0	0	0	0	1021.0	0.0	0.0	1.9	overall, but more ground frosts			
30	7	23	02	02	97	13.3	72	17.8	6.4	3.4	10.4	10.9	11.6	11.7	10.7	9.9	10	0	tr	1.0	0	0	0	0	0	1022.0	0.0	0.0	1.7	than usual. Only two Aprils have			
Monthly means						10.1	71	15.1	5.1	1.6	8.2	8.6	9.3	9.8	9.4	9.4											1016.8				temperature' in the past decade.		
Monthly totals																				71.2	160.7							55.1	2.5	48.7	A wet month - the wettest April		
Highest values						13.8		20.2	9.9	7.9	10.7	10.9	11.6	11.7	10.7	9.9			15.1	12.1								8.5	2.5	2.8	having 1mm or more being the		
Lowest values						7.1	38	10.7	-1.1	-4.8	4.4	5.0	6.9	8.5	8.6	8.9																Sunshine slightly less than	
1991-2020 monthly climatological averages						76	15.3	5.5	2.6	8.4	8.6	9.6	9.9	9.4	9.1			46.8	167.3									1015.2	42.4	5.1	56.9	during a thunderstorm on the 6th -	
																															smaller hail fell continuously for		
																															more than ten minutes.		

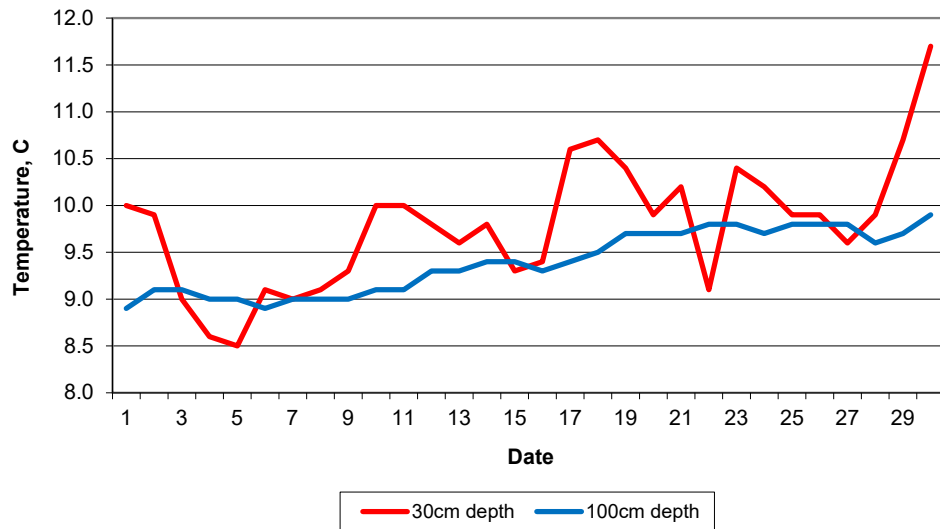
Key
 DD: date
 07GMT observations
 N cloud cover (oktas, 9=obscured) dd wind direction (degrees/10)
 ff wind speed (knots)
 ww present weather code
 1 cloud decreasing 25 recent rain shower
 2 sky not changing 41 fog patches
 3 cloud increasing 61 continuous slight rain
 10 mist 80 light rain shower
 21 recent rain 81 moderate rain shower
 VV visibility (00-50 metres/100, 94 very poor, 95 poor, 96 moderate, 97 good)
 Soil temperatures are for 0700GMT beneath bare soil (5, 10, 20cm) or grass (30, 50, 100cm)

09GMT observations
 Temp temperature (degC) RH relative humidity (%)
 E state of ground (X1 slight snow, 10 moist, 20 wet, 90 cracked) SS snow depth (cm)
 Press air pressure (mb)

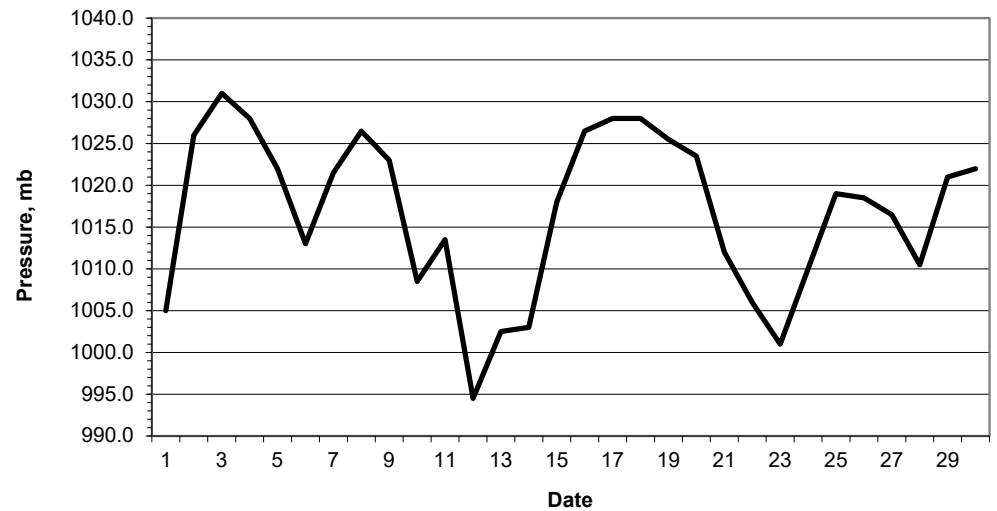
24 hour readings
 Max maximum temperature (degC) beginning 09GMT Min minimum temperature (degC) ending 09GMT
 Gmin grass minimum temperature (degC) ending 09GMT Rain precipitation beginning 09GMT
 Sun sunshine (hours) sunrise-sunset Rain hrs hours of rainfall (>0.1mm/h) 09-09GMT
 Fr. Hrs hours of air frost (00-24GMT) Pch Evap Piche evaporation (ml) beginning 09GMT

Days with
 S snow(5) or sleet(1) falling L 50% snow cover at 09GMT H hail or ice pellets
 T thunder heard G gale F fog at 09GMT

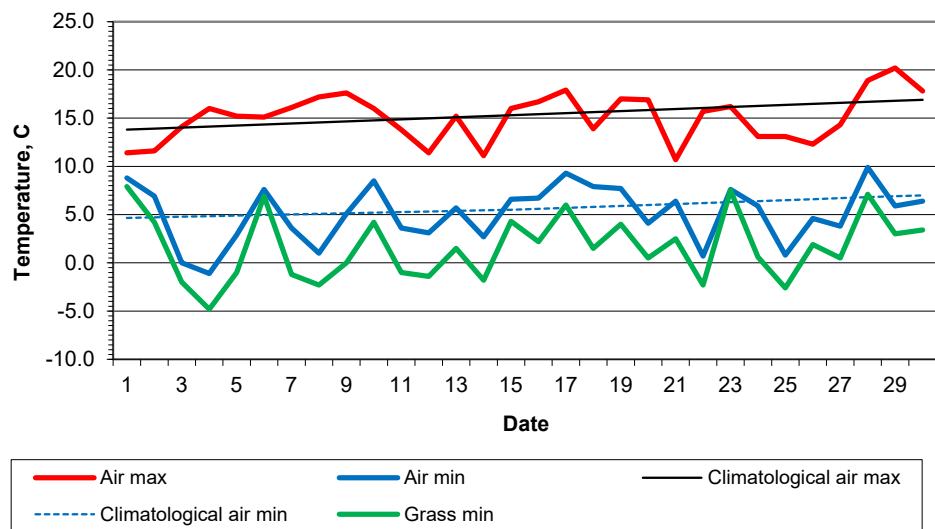
Daily soil temperatures, 0700GMT



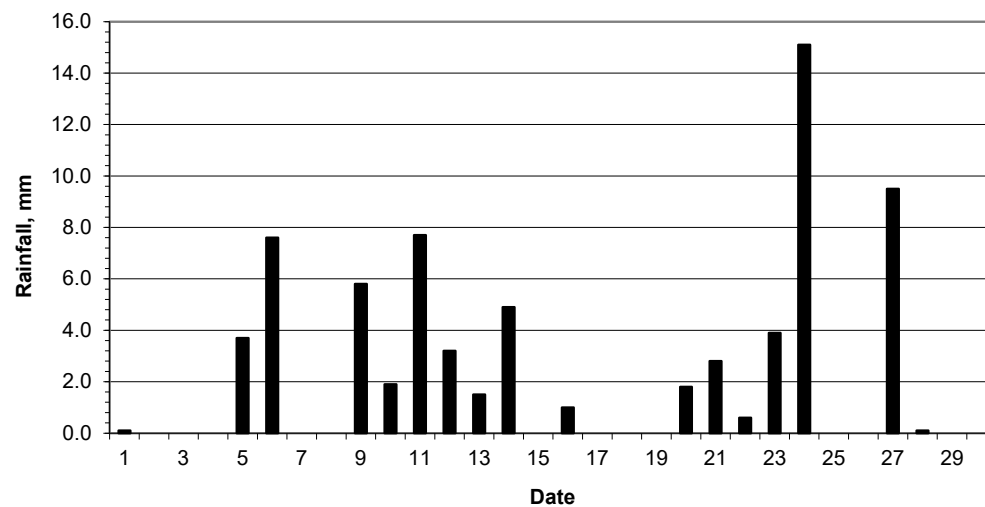
Mean sea level pressure, 0900GMT



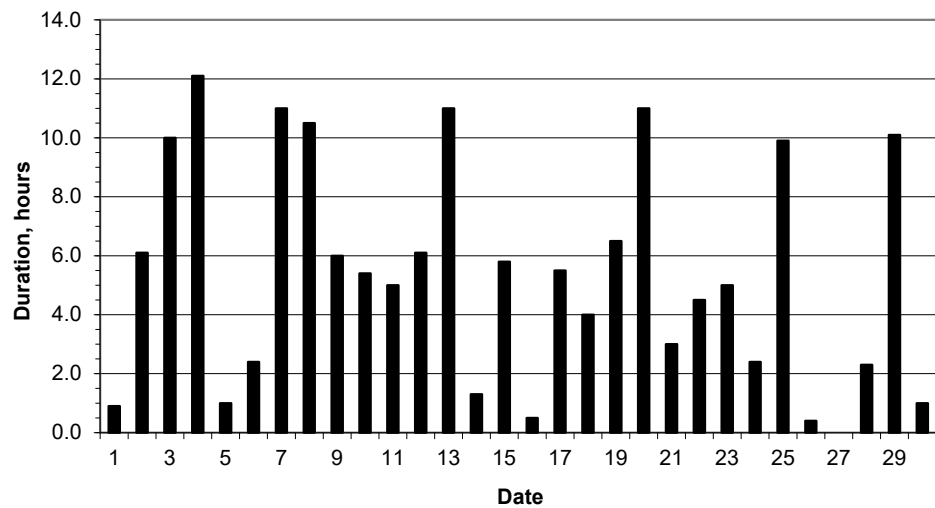
Daily temperature extremes



Daily rainfall



Daily sunshine



Daily evaporation

