

MAIDENHEAD METEOROLOGICAL OBSERVATIONS FOR APRIL 2022

DD	N	dd	ff	ww	VV	0900GMT		Temperature			Soil temperatures (depth in cm)						E	SS	Rain	Sun	S	L	H	T	G	F	Press	Rain hrs	Fr. hrs	Pch Evap						
						Temp	RH	Max	Min	Gmin	5	10	20	30	50	100																				
01	0	36	09	02	97	5.8	63	10.0	0.9	-1.5	3.4	4.2	6.0	8.0	8.2	9.0	03	0	tr	9.4	5	0	0	0	0	0	1017.5	0.0	0.0	2.1	Number of days with 2022 normal Snow/sleet falling 1 0.5 50% snow cover 09GMT 0 0.0 Hail or ice pellets 1 1.2 Thunder 1 1.2 Gale 0 0.0 Fog at 09GMT 0 0.0 Air frost 4 1.6 Ground frost 10 6.7 0.2mm precipitation 5 12.0 1.0mm precipitation 3 9.0 5.0mm precipitation 1 3.1 No sunshine 0 3.1 Temperatures were 1.2 degC above average by day, but below average by night; April was dry and sunny with winds from the E'ly quarter on many days. There were more days with air frost than in March and the same number as in February this year. The fourth very dry April in the past six years and the dullest since 2019. The 3rd had the lowest April temperature since 1990 and no measurable rain fell after the 6th.					
02	3	36	05	02	97	6.8	70	10.4	-1.5	-5.9	3.3	3.5	5.4	7.5	7.8	8.8	03	0	0.2	8.7	0	0	0	0	0	1023.5	0.3	5.9	1.9							
03	0	00	00	02	97	6.6	76	10.7	-3.3	-7.1	2.5	3.2	5.0	7.1	7.6	8.6	03	0	2.9	6.5	0	0	0	0	0	1028.0	6.4	7.6	1.3							
04	8	23	02	61	96	7.5	92	15.1	4.7	-1.0	6.2	6.2	7.0	7.5	7.4	8.5	10	0	0.5	0.2	0	0	0	0	0	1013.0	0.4	0.0	1.1							
05	8	27	02	02	97	11.9	76	15.1	7.5	6.0	9.1	9.0	9.0	8.3	7.7	8.4	10	0	1.0	1.5	0	0	0	0	0	1010.5	0.8	0.0	2.0							
06	8	27	05	60	96	11.0	85	15.6	9.5	7.0	9.1	8.9	9.1	8.9	8.2	8.4	10	0	10.3	2.7	0	0	5	1	0	0	999.5	3.0	0.0	1.4						
07	4	27	13	03	97	10.0	59	14.6	7.1	4.2	8.1	8.2	9.0	9.0	8.6	8.6	20	0	0.0	8.4	0	0	0	0	0	987.0	0.0	0.0	2.5							
08	8	05	02	02	97	5.5	80	12.3	1.2	-2.9	6.1	6.3	7.6	8.8	8.6	8.6	10	0	tr	5.0	0	0	0	0	0	998.5	0.0	0.0	1.8							
09	3	31	02	02	97	9.0	62	14.2	-0.2	-4.5	4.7	5.1	7.0	8.5	8.4	8.7	10	0	0.0	10.9	0	0	0	0	0	1016.0	0.0	1.0	2.0							
10	4	18	05	02	97	9.0	62	14.5	-0.6	-4.2	4.9	5.6	7.2	8.5	8.4	8.7	10	0	0.0	7.8	0	0	0	0	0	1020.5	0.0	2.0	2.5							
11	7	09	05	02	97	11.8	51	18.7	5.3	-0.5	7.1	7.2	8.1	8.7	8.5	8.7	03	0	tr	6.6	0	0	0	0	0	1011.0	0.0	0.0	3.8							
12	7	09	02	02	97	13.4	73	19.3	10.4	5.2	9.6	9.5	10.0	9.4	8.7	8.7	03	0	tr	2.6	0	0	0	0	0	1004.5	0.0	0.0	1.4							
13	7	23	02	02	97	12.9	90	19.8	9.5	4.2	10.2	10.1	10.5	10.0	9.2	8.9	03	0	0.0	2.4	0	0	0	0	0	1016.0	0.0	0.0	1.4							
14	8	00	00	10	95	12.8	96	20.4	6.0	1.6	9.2	9.3	10.1	10.3	9.6	9.1	03	0	0.0	4.8	0	0	0	0	0	1022.5	0.0	0.0	1.4							
15	4	13	02	02	97	15.4	78	24.1	5.7	2.5	9.4	9.7	10.7	10.9	10.1	9.3	03	0	0.0	12.8	0	0	0	0	0	1027.0	0.0	0.0	2.4							
16	3	09	02	05	96	15.1	72	21.6	6.8	3.2	10.3	10.6	11.4	11.4	10.6	9.5	03	0	0.0	12.0	0	0	0	0	0	1030.5	0.0	0.0	2.9							
17	6	09	02	02	97	13.8	67	20.6	6.1	2.0	10.0	10.3	11.5	11.7	11.0	9.7	03	0	0.0	10.4	0	0	0	0	0	1024.0	0.0	0.0	3.2							
18	6	00	00	02	97	13.8	67	18.9	6.3	2.1	10.0	10.3	11.5	11.8	11.1	10.0	90	0	0.0	9.8	0	0	0	0	0	1018.0	0.0	0.0	2.2							
19	6	31	05	02	97	11.5	74	16.4	5.4	1.5	10.0	10.3	11.4	11.9	11.2	10.2	90	0	tr	1.6	0	0	0	0	0	1017.0	0.0	0.0	2.1							
20	7	05	02	02	97	13.1	69	19.8	6.4	2.9	9.9	10.1	11.0	11.4	11.0	10.3	90	0	0.0	8.4	0	0	0	0	0	1017.5	0.0	0.0	3.2							
21	1	09	05	02	97	14.5	61	20.0	6.0	1.7	9.6	10.0	11.0	11.6	11.1	10.4	90	0	0.0	12.6	0	0	0	0	0	1013.0	0.0	0.0	3.7							
22	8	09	09	02	97	12.5	69	15.6	8.4	4.5	10.9	11.1	11.6	11.8	11.2	10.5	90	0	0.0	0.4	0	0	0	0	0	1008.5	0.0	0.0	2.3							
23	7	05	05	02	97	13.4	72	18.2	9.1	6.0	11.1	11.1	11.5	11.5	11.1	10.5	90	0	0.0	4.2	0	0	0	0	0	1003.5	0.0	0.0	2.5							
24	7	05	05	02	97	13.4	68	18.7	7.7	3.3	10.6	10.6	11.4	11.6	11.1	10.6	90	0	0.0	9.0	0	0	0	0	0	1008.0	0.0	0.0	2.7							
25	7	05	05	02	97	10.2	72	16.1	6.1	1.2	10.0	10.1	11.2	11.8	11.3	10.6	90	0	0.0	5.7	0	0	0	0	0	1015.5	0.0	0.0	1.4							
26	0	09	05	02	97	12.1	46	17.1	2.9	-1.0	8.6	8.9	10.6	11.4	11.1	10.7	90	0	0.0	8.5	0	0	0	0	0	1022.5	0.0	0.0	2.8							
27	8	09	02	02	97	10.0	61	12.2	5.4	1.0	10.2	10.7	11.4	11.8	11.3	10.7	90	0	0.0	0.1	0	0	0	0	0	1028.5	0.0	0.0	2.0							
28	8	09	02	02	97	10.3	61	15.0	5.8	0.7	10.1	10.6	10.7	11.1	11.0	10.7	90	0	0.0	0.3	0	0	0	0	0	1032.0	0.0	0.0	1.9							
29	7	05	02	03	97	10.7	64	11.5	6.3	2.1	10.0	10.1	11.0	11.3	11.0	10.7	90	0	0.0	1.1	0	0	0	0	0	1033.0	0.0	0.0	1.4							
30	1	09	05	02	97	11.9	63	19.1	1.3	-2.0	7.6	7.9	9.6	10.7	10.8	10.8	90	0	0.0	11.6	0	0	0	0	0	1032.0	0.0	0.0	2.4							
Monthly means						11.2	70	16.5	5.1	1.1	8.4	8.6	9.6	10.1	9.8	9.6																				
Monthly totals																						14.9	186.0						1016.6							
Highest values						15.4		24.1	10.4	7.0	11.1	11.1	11.6	11.9	11.3	10.8					10.3	12.8							6.4	7.6	3.8					
Lowest values						5.5	46	10.0	-3.3	-7.1	2.5	3.2	5.0	7.1	7.4	8.4																				
1991-2020 monthly climatological averages						76	15.3	5.5	2.6	8.4	8.6	9.6	9.9	9.4	9.1							46.8	167.3						1015.2	42.4	5.1	56.9				

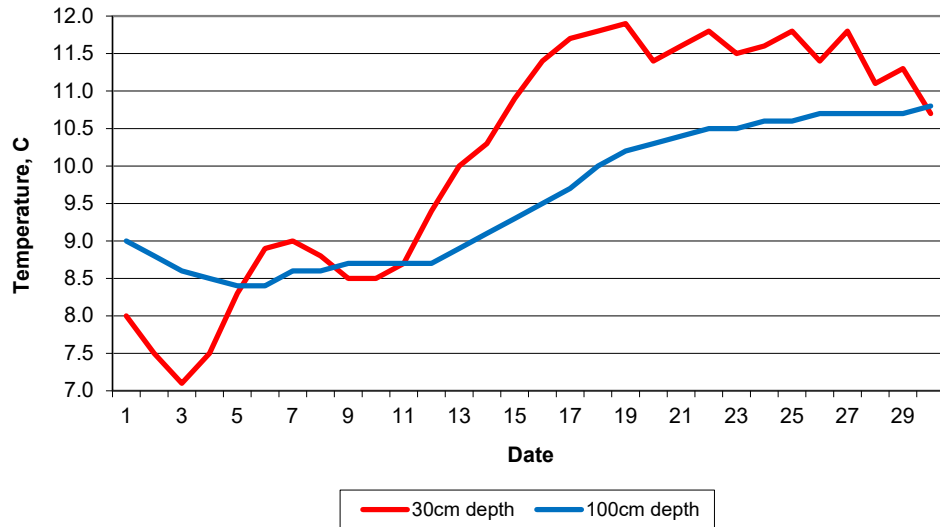
Key
 DD: date
 07GMT observations
 N cloud cover (oktas, 9=obscured) dd wind direction (degrees/10)
 ff wind speed (knots)
 ww present weather code
 1 cloud decreasing 25 recent rain shower
 2 sky not changing 41 fog patches
 3 cloud increasing 61 continuous slight rain
 10 mist 80 light rain shower
 21 recent rain 81 moderate rain shower
 VV visibility (00-50 metres/100, 94 very poor, 95 poor, 96 moderate, 97 good)
 Soil temperatures are for 0700GMT beneath bare soil (5, 10, 20cm) or grass (30, 50, 100cm)

09GMT observations
 Temp temperature (degC) RH relative humidity (%)
 E state of ground (X1 slight snow, 10 moist, 20 wet, 90 cracked) SS snow depth (cm)
 Press air pressure (mb)

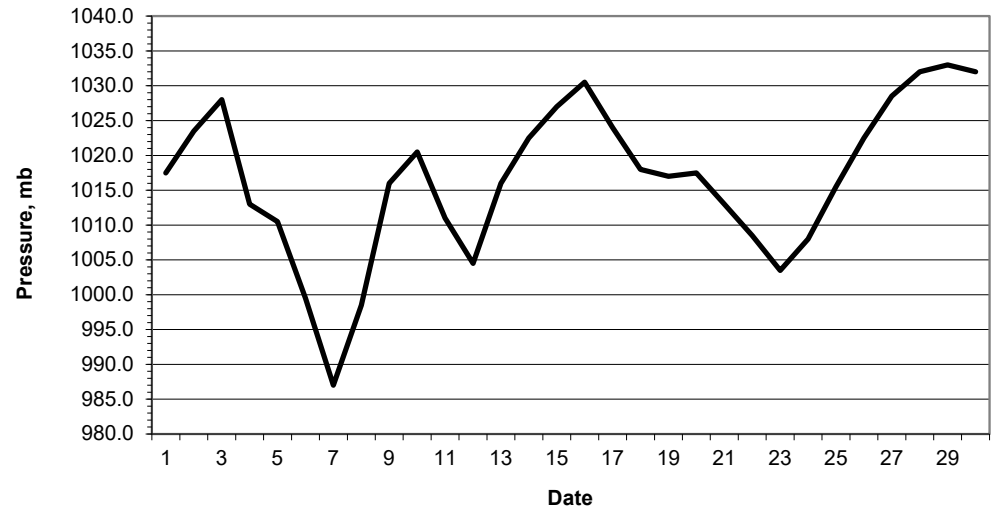
24 hour readings
 Max maximum temperature (degC) beginning 09GMT Min minimum temperature (degC) ending 09GMT
 Gmin grass minimum temperature (degC) ending 09GMT Rain precipitation beginning 09GMT
 Sun sunshine (hours) sunrise-sunset Rain hrs hours of rainfall (>0.1mm/h) 09-09GMT
 Fr. Hrs hours of air frost (00-24GMT) Pch Evap Piche evaporation (ml) beginning 09GMT

Days with
 S snow(5) or sleet(1) falling L 50% snow cover at 09GMT H hail or ice pellets
 T thunder heard G gale F fog at 09GMT

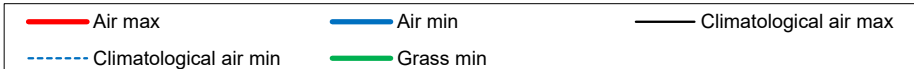
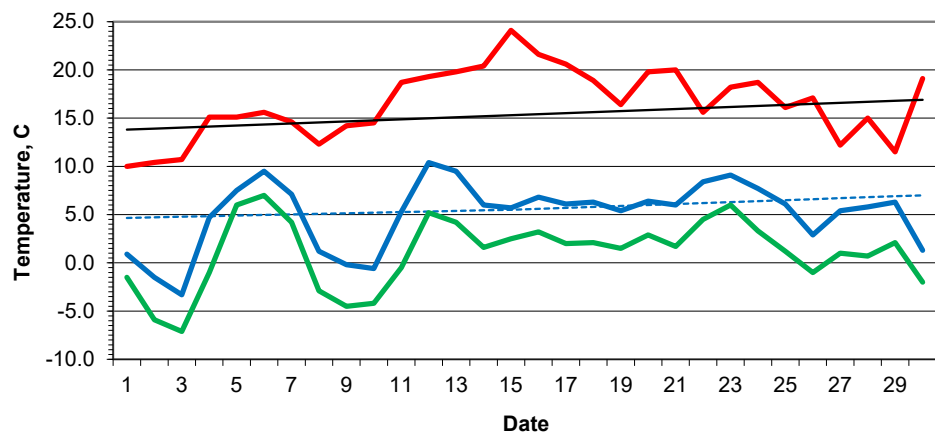
Daily soil temperatures, 0700GMT



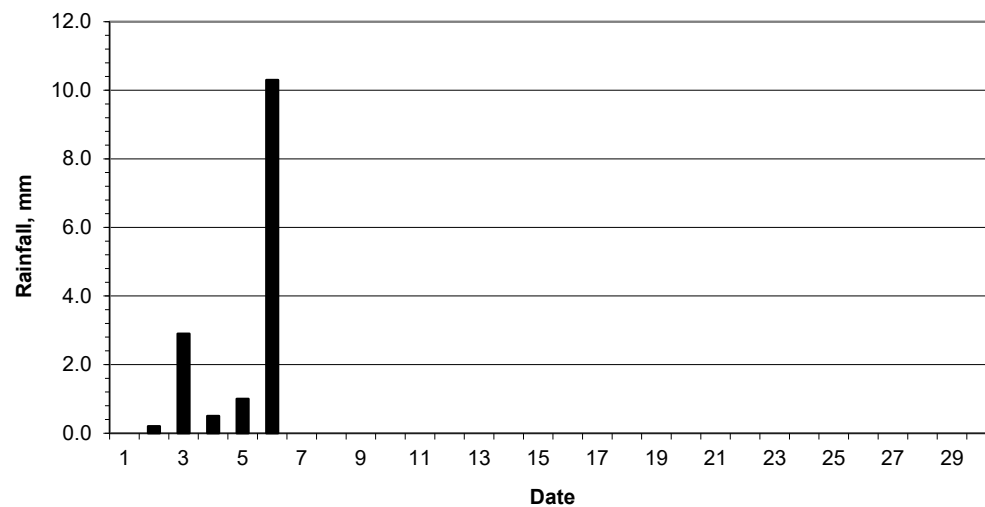
Mean sea level pressure, 0900GMT



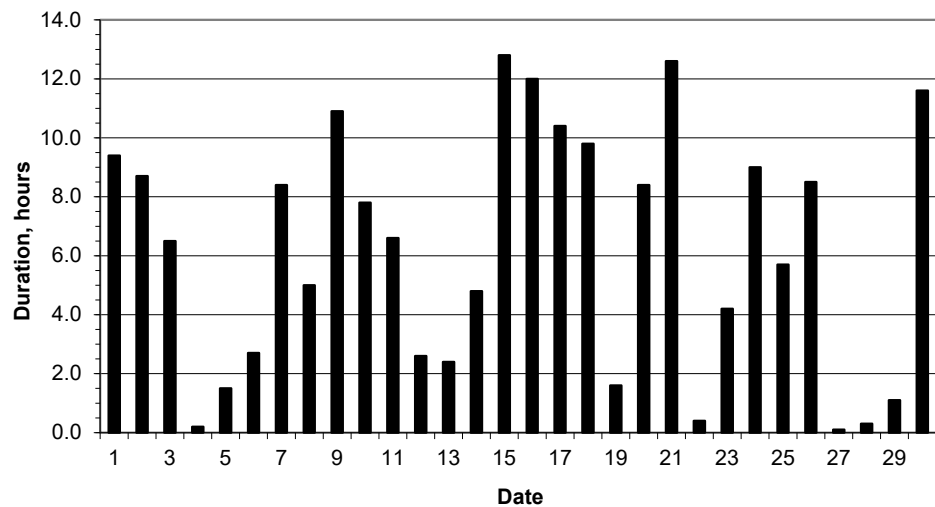
Daily temperature extremes



Daily rainfall



Daily sunshine



Daily evaporation

