



Making Better Scientific Graphics



Doug McNeall

Met Office Hadley Centre
betterfigures.org

@dougmcneall



Ed Hawkins

University of Reading
climate-lab-book.ac.uk

@ed_hawkins



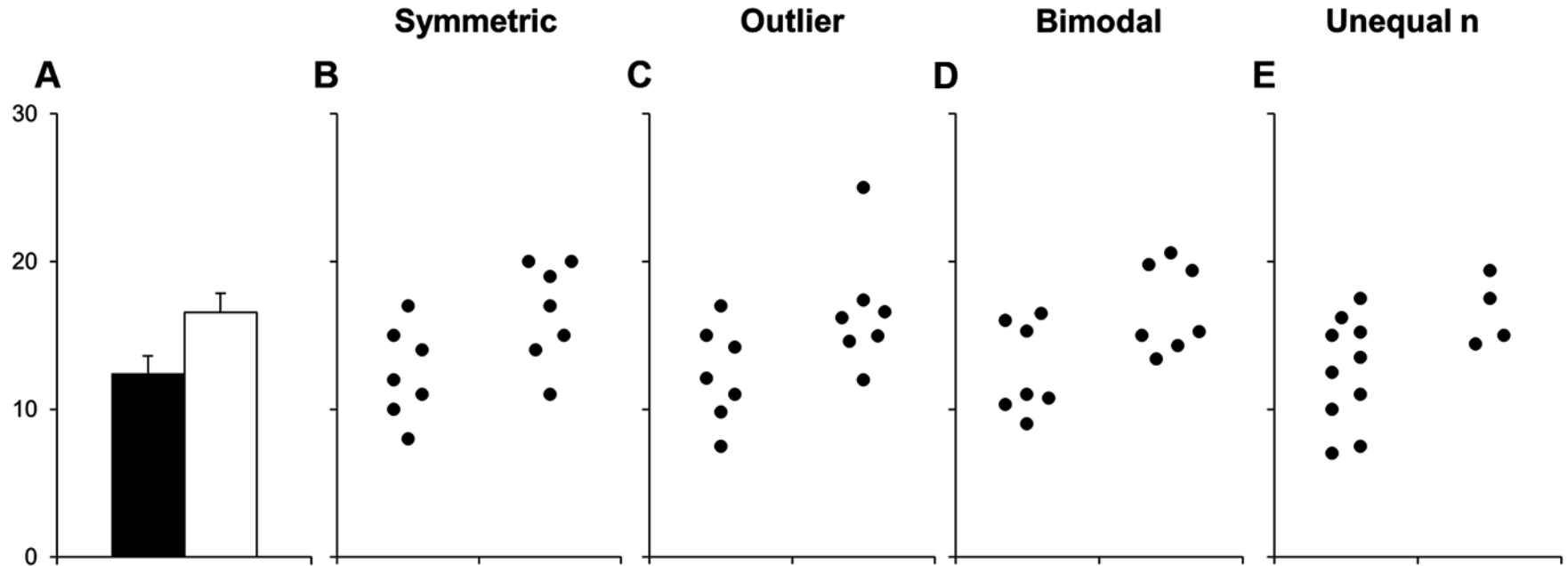
Some principles & recommendations

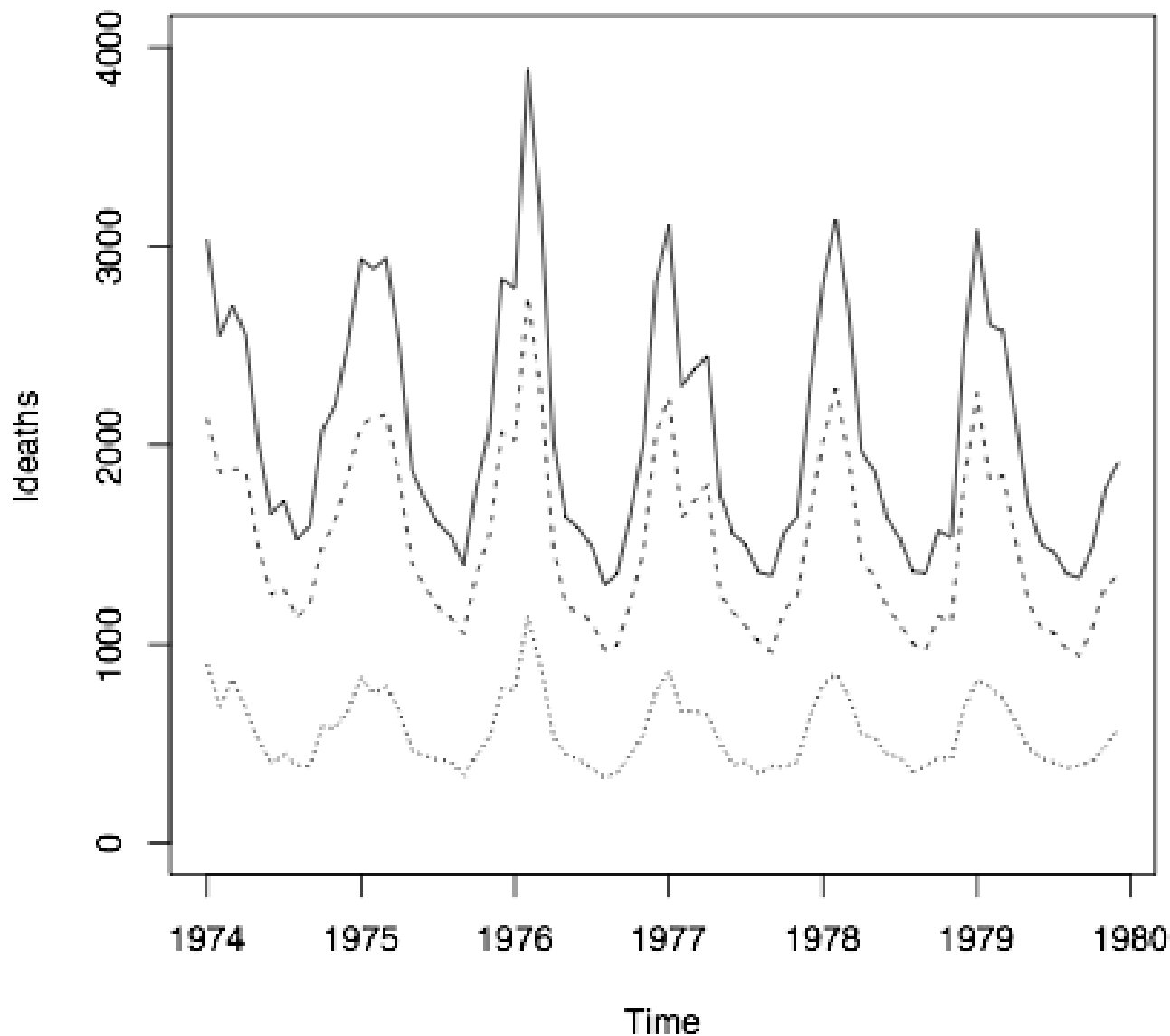
“Science is not finished until it is communicated”

– Mark Walport, UK Chief Scientific Advisor

- show the data, avoiding distortion
- encourage comparisons
- simplify where possible
- maximise data-to-ink ratio, i.e. avoid ‘chart junk’
- don’t trust defaults in plotting software
- ensure legibility of text and lines

Show the data



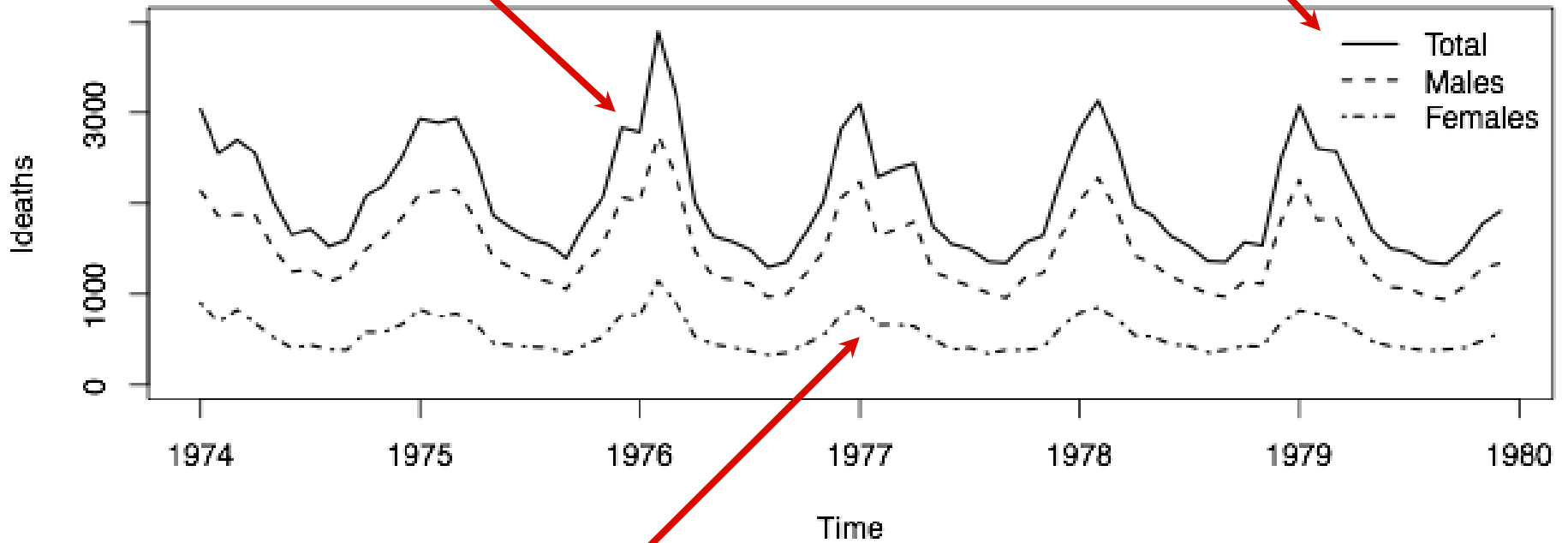


In R:
> plot(Ideaths)

Fig 1. Monthly deaths due to lung disease in the UK. The dotted line shows number of female deaths, the dashed line shows male deaths, with the total shown by the solid line.

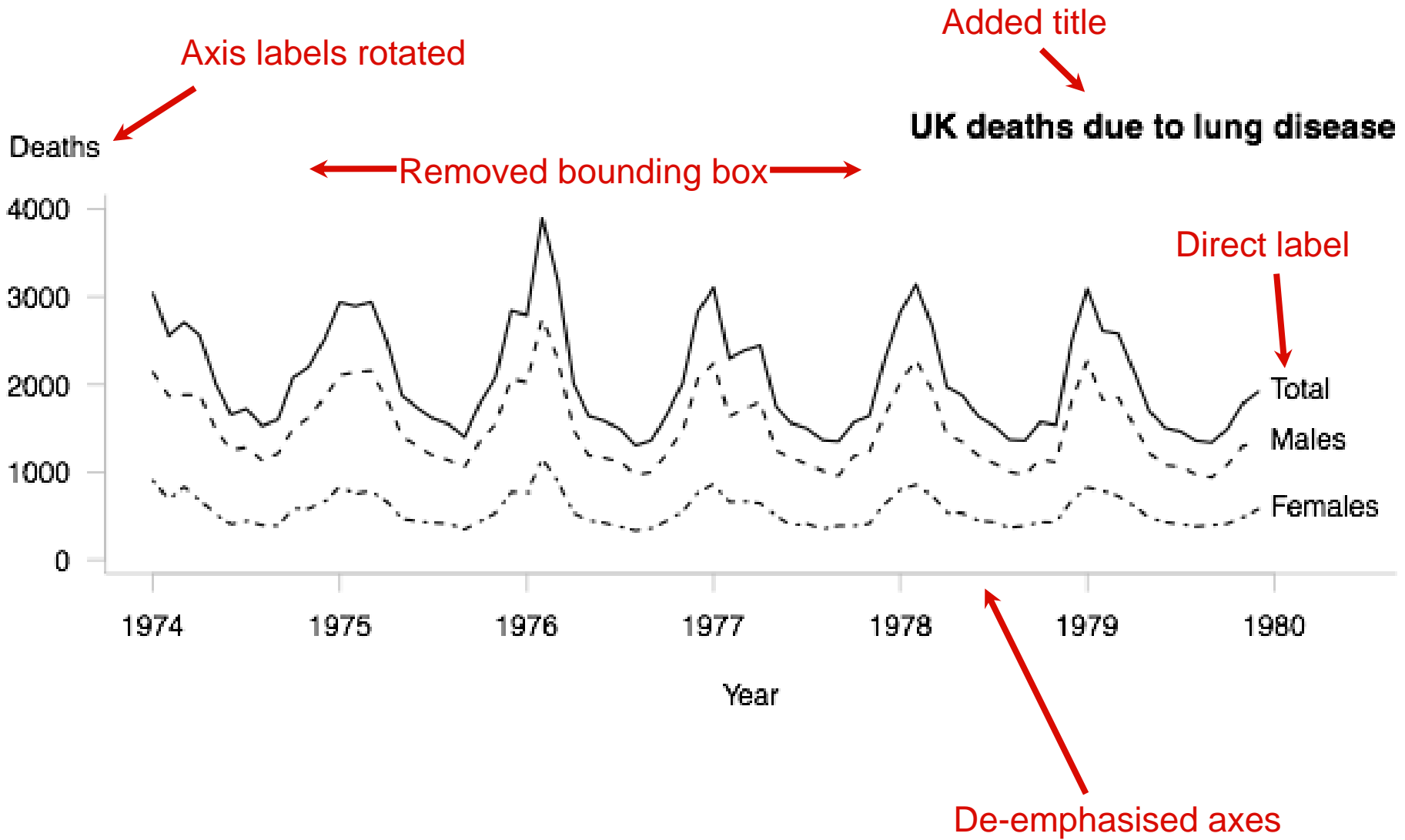
Aspect ratio changes slope

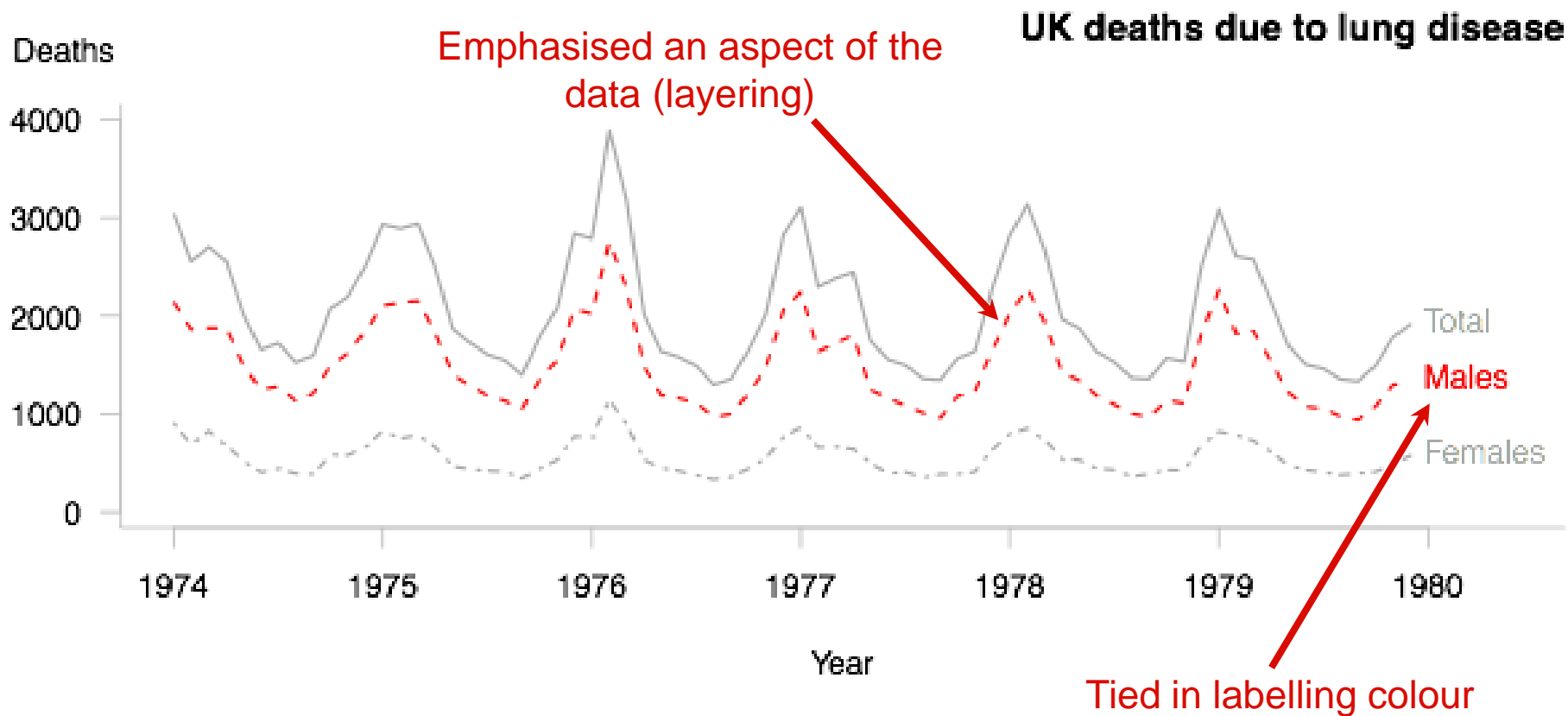
Added legend

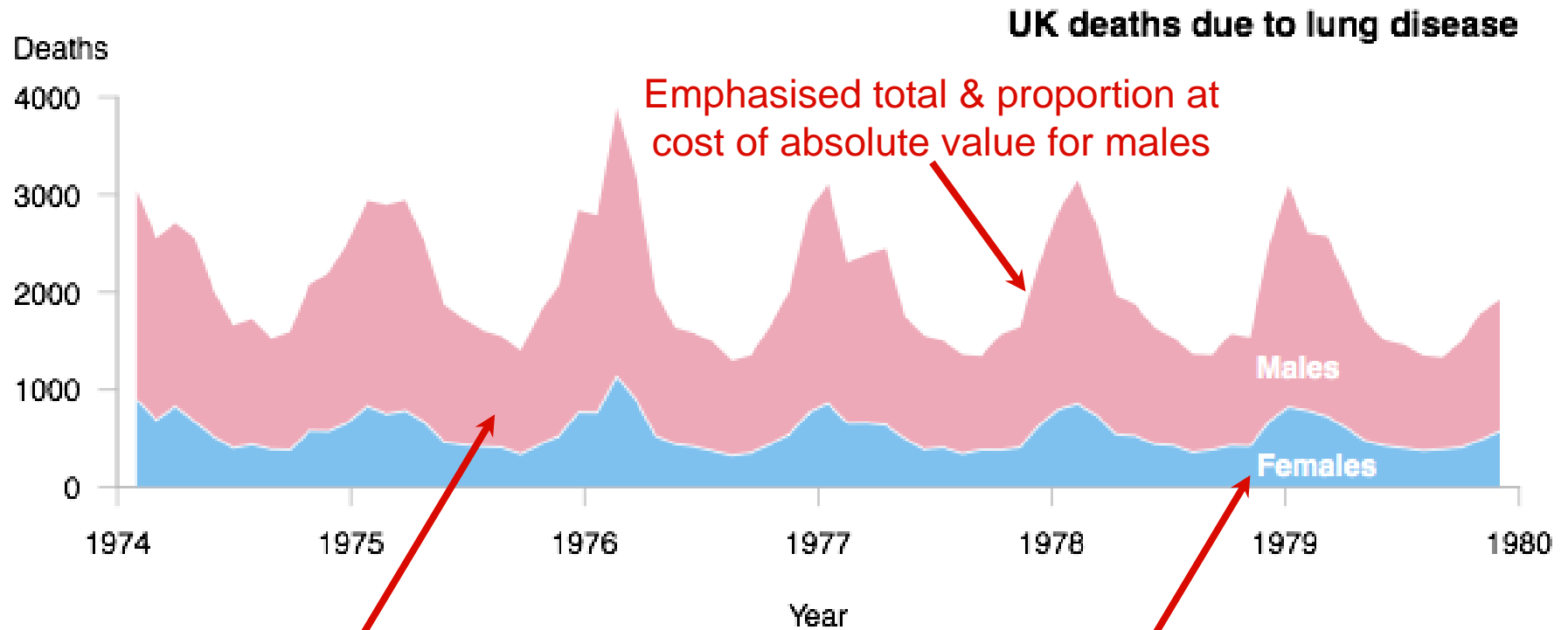


Heavier line

Removed figure caption







Emphasised total & proportion at cost of absolute value for males

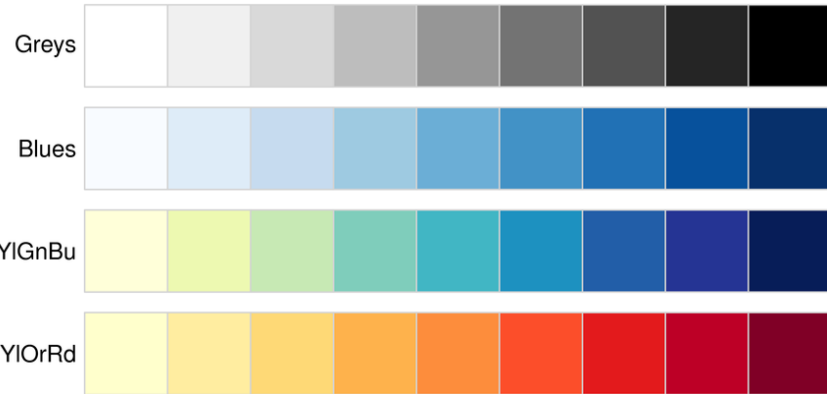
Culturally appropriate colour scheme

Contrasting direct labelling

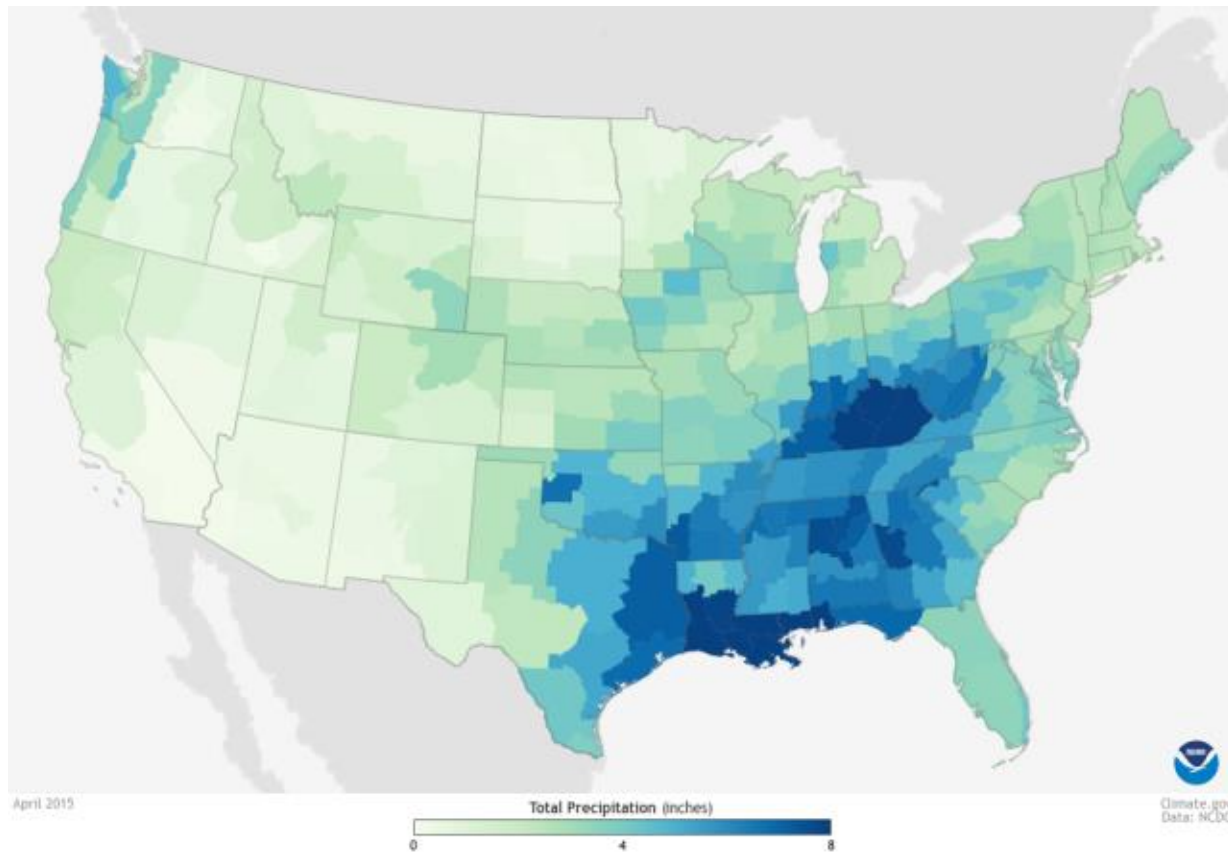
How to choose a colour palette?

- Ensure a perceptual relationship between the colour scale and the data (e.g. darker = more)
- Understand audience cultural expectations (e.g. blue = wet)
- Ensure it doesn't distort the data
- Make it accessible
- Don't use too many colours!

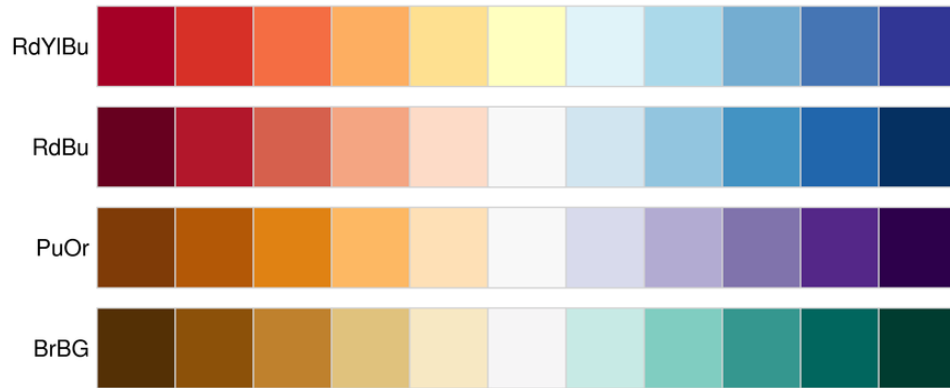
Sequential palettes



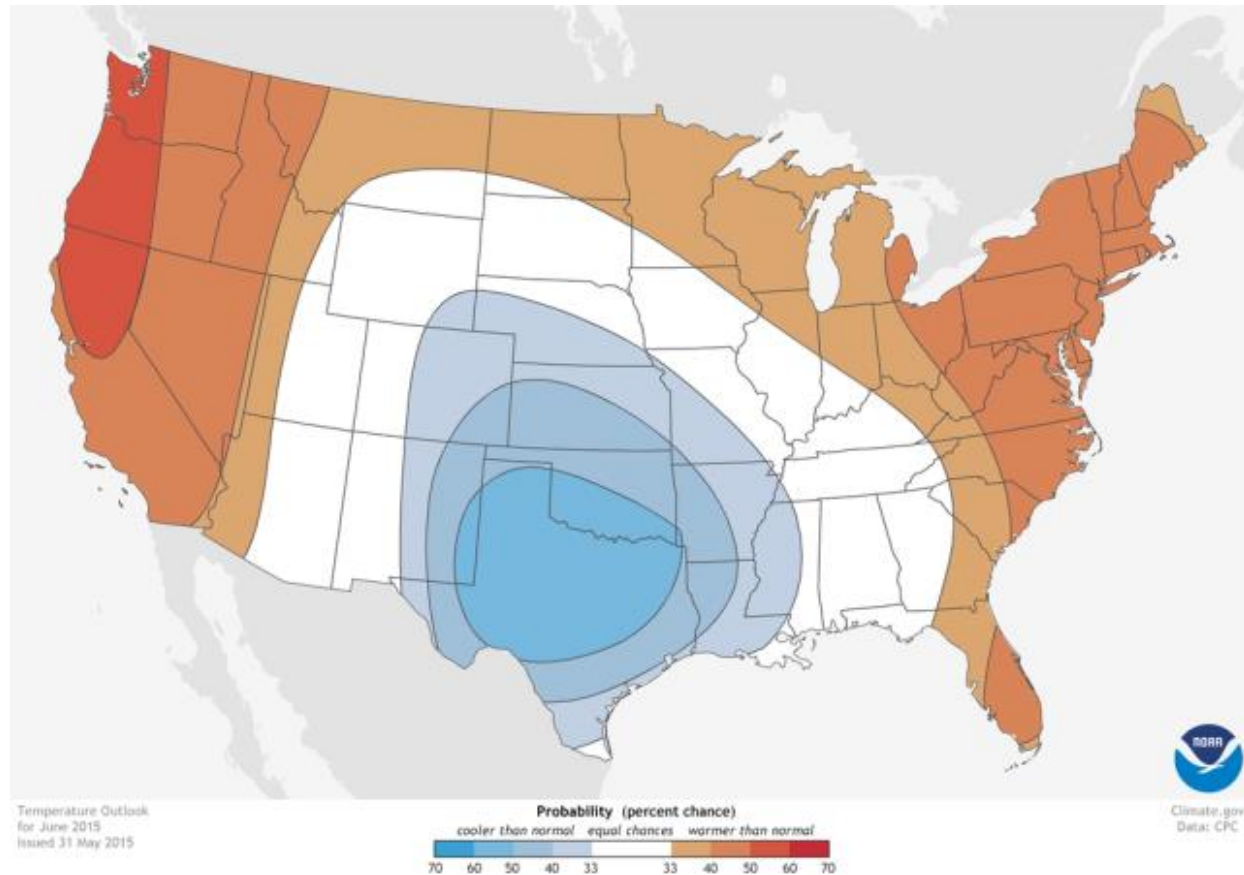
colorbrewer2.org



Diverging palettes



colorbrewer2.org



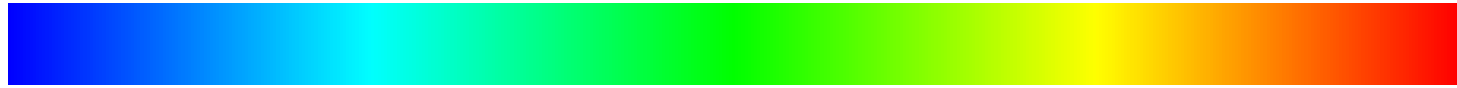
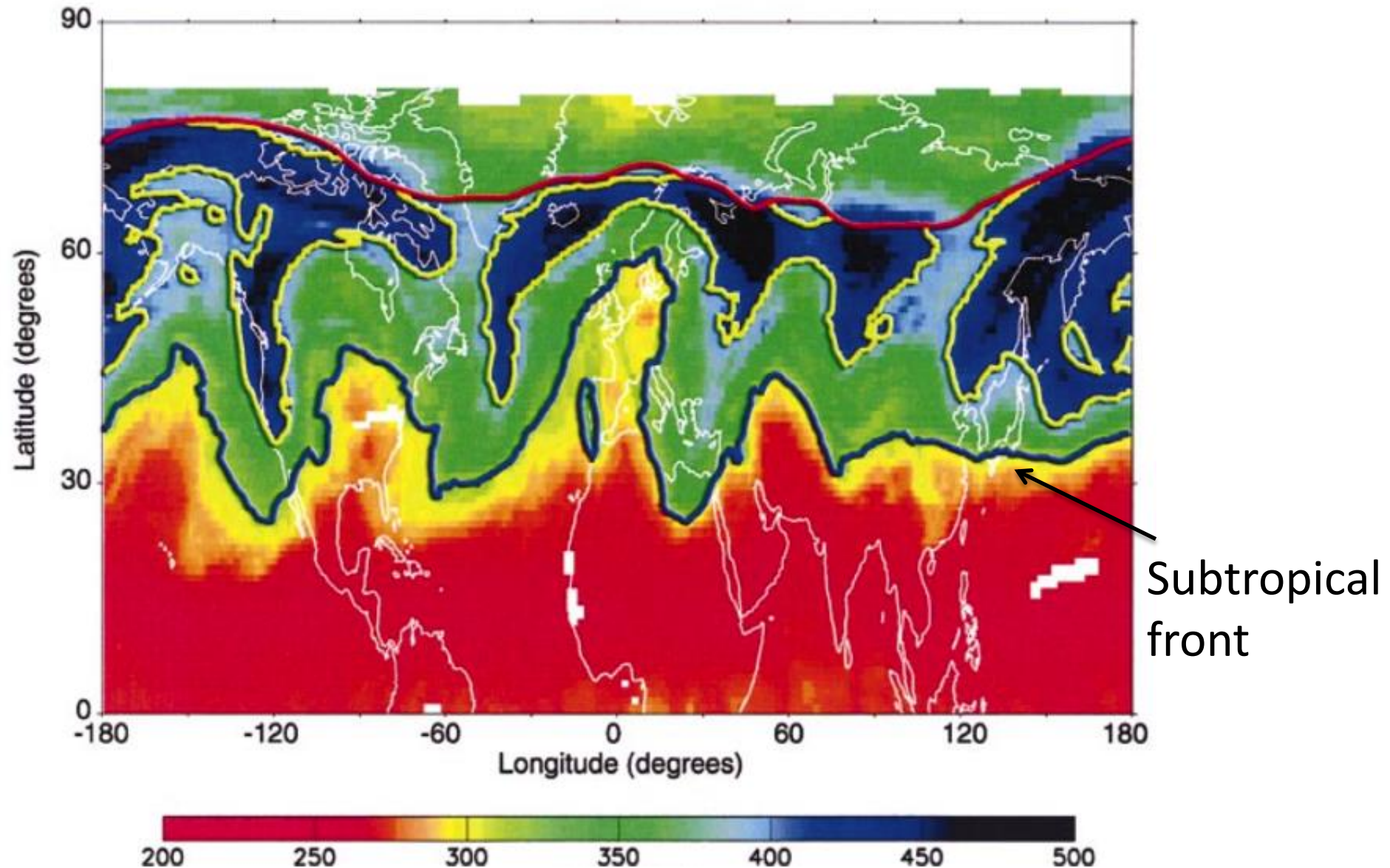


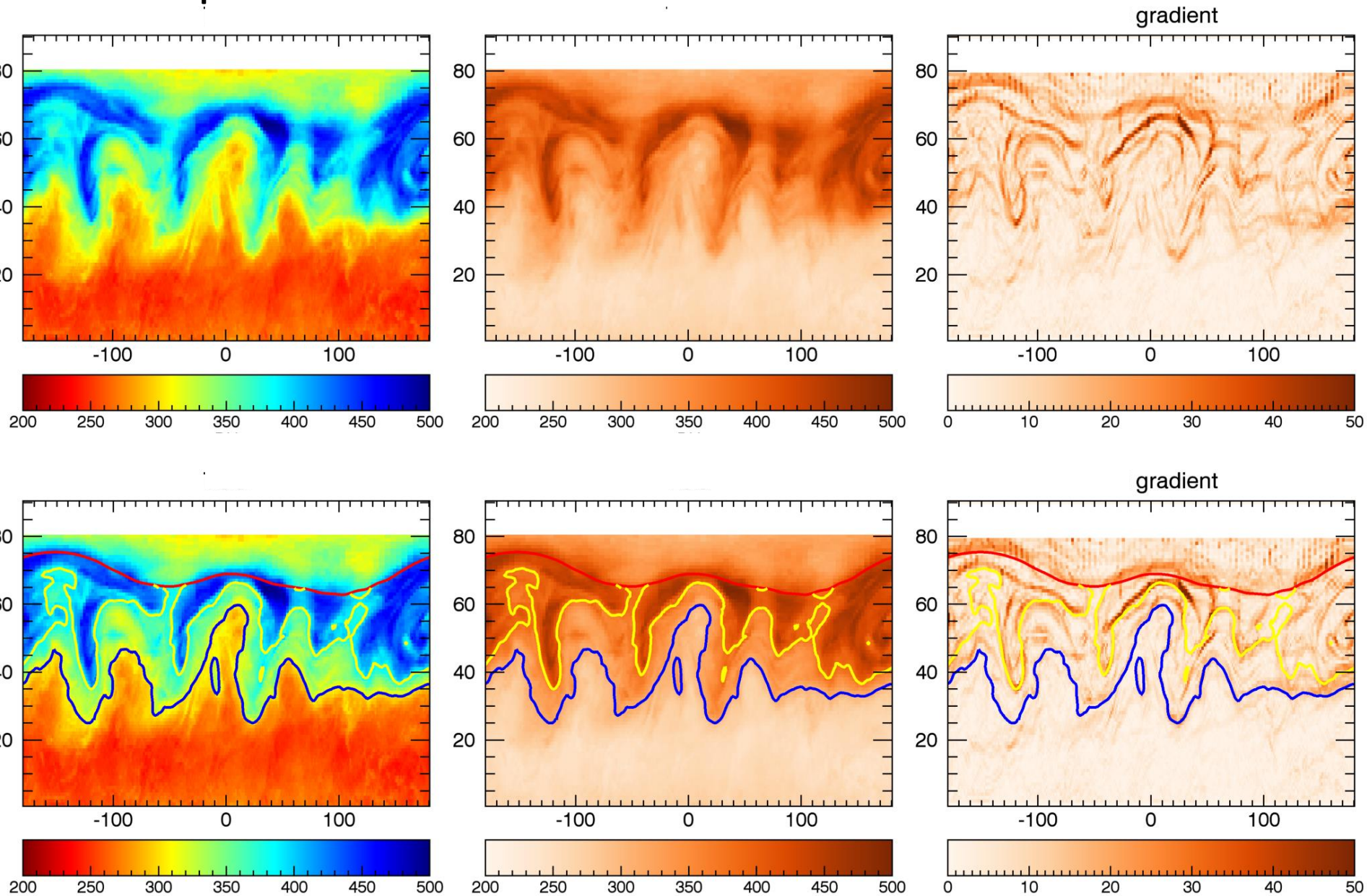
Fig. 1. The rainbow color map. Know thy enemy.

[#endrainbow](https://tiny.cc/endrainbow)

Dangers of rainbow colour scales

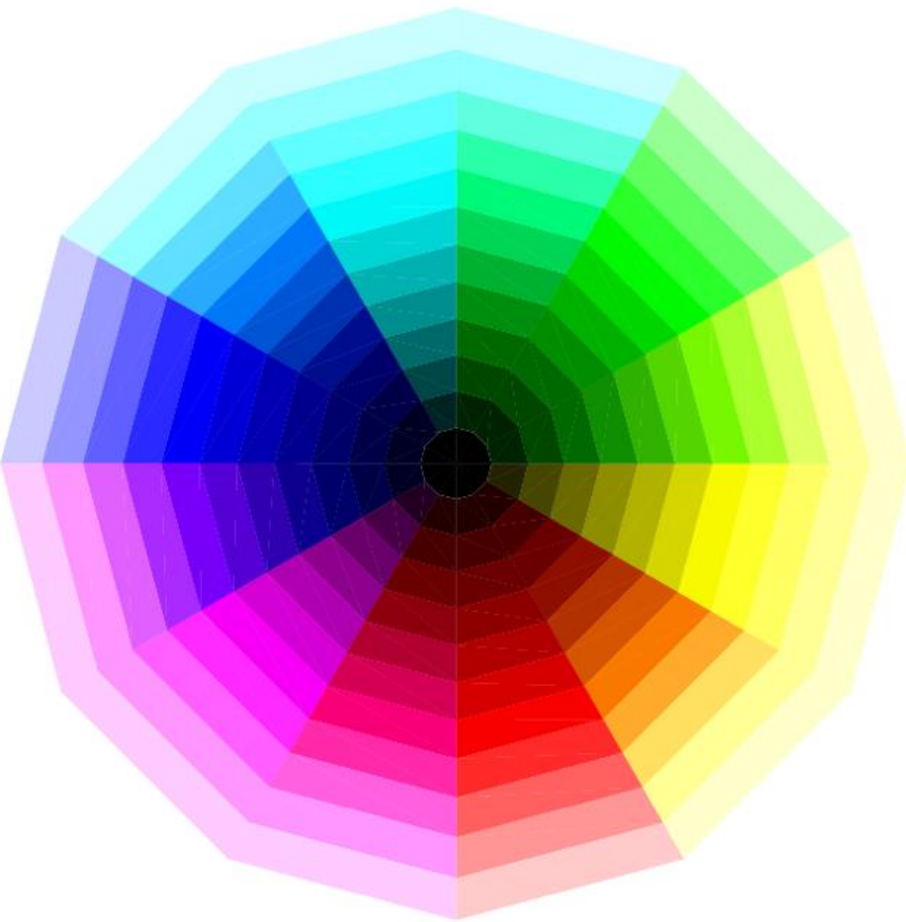


'Sub-tropical' front is an artefact of the colour scale

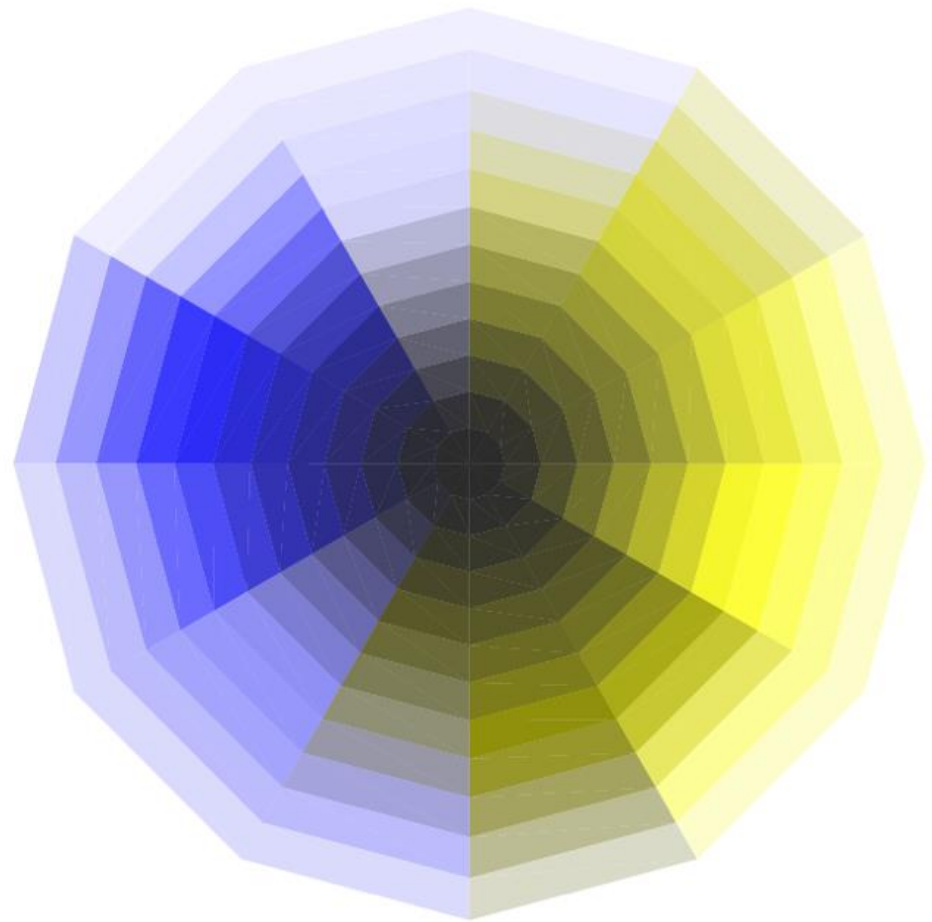


Figures from Sean Davis

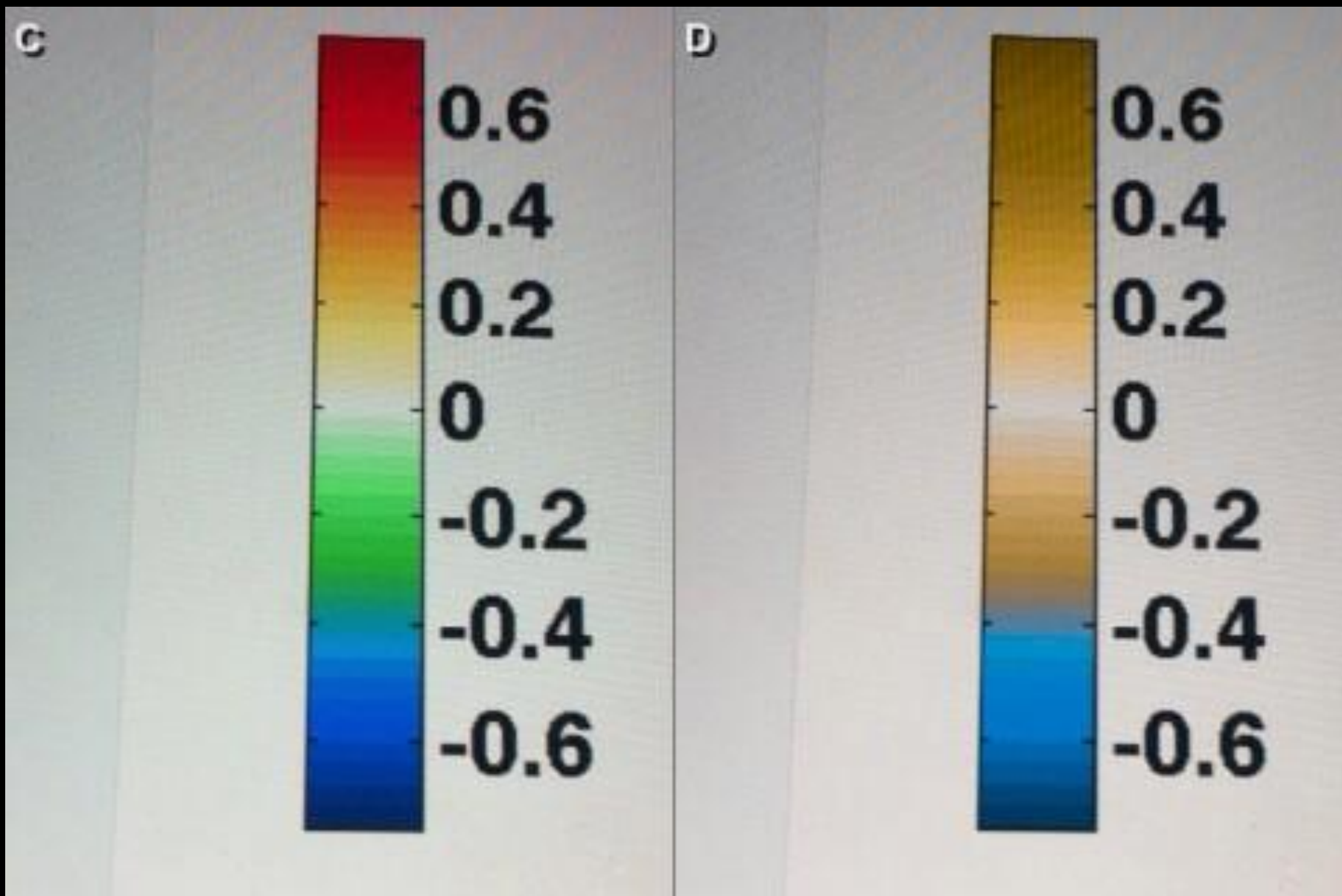
Colour Wheel



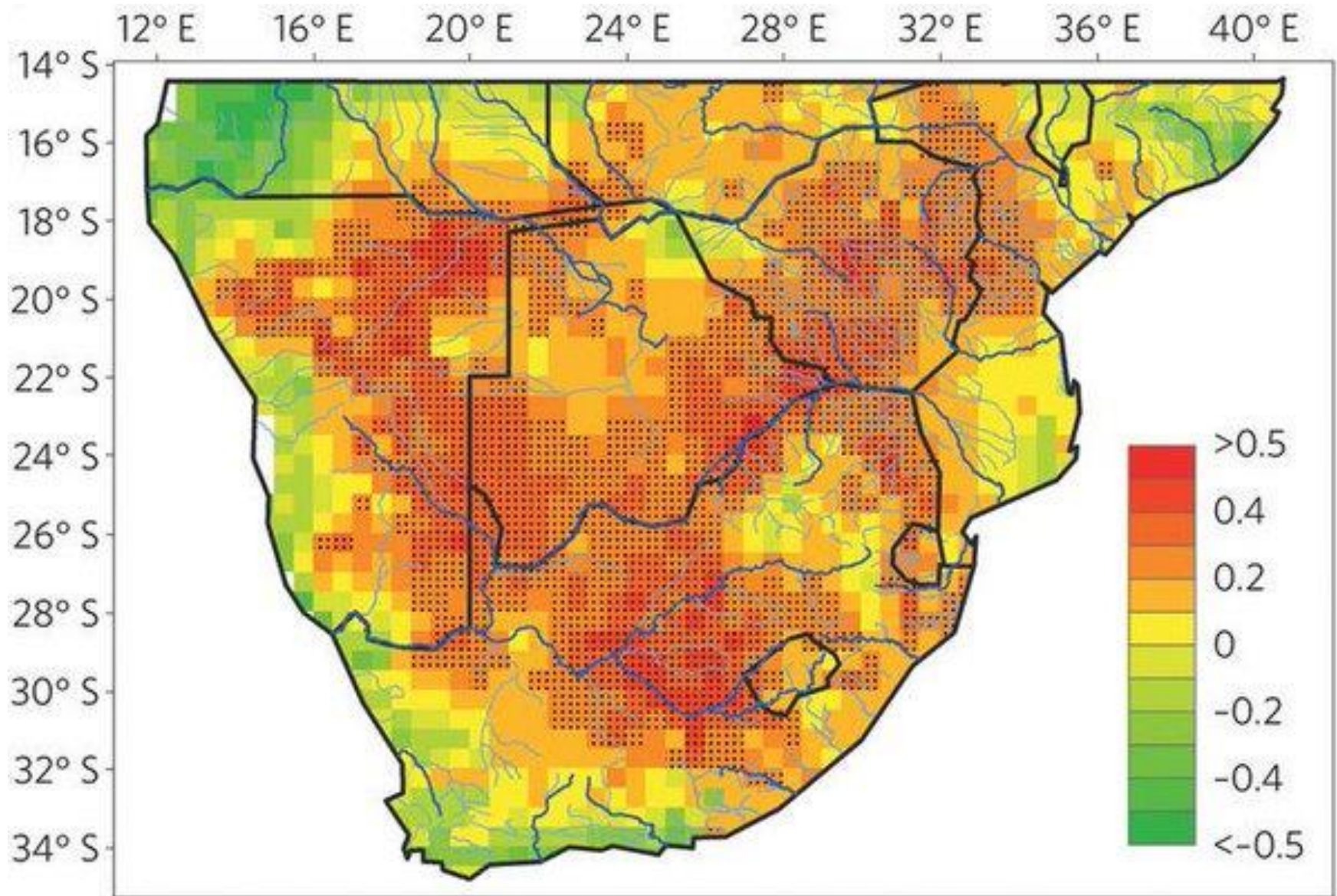
Normal colour vision



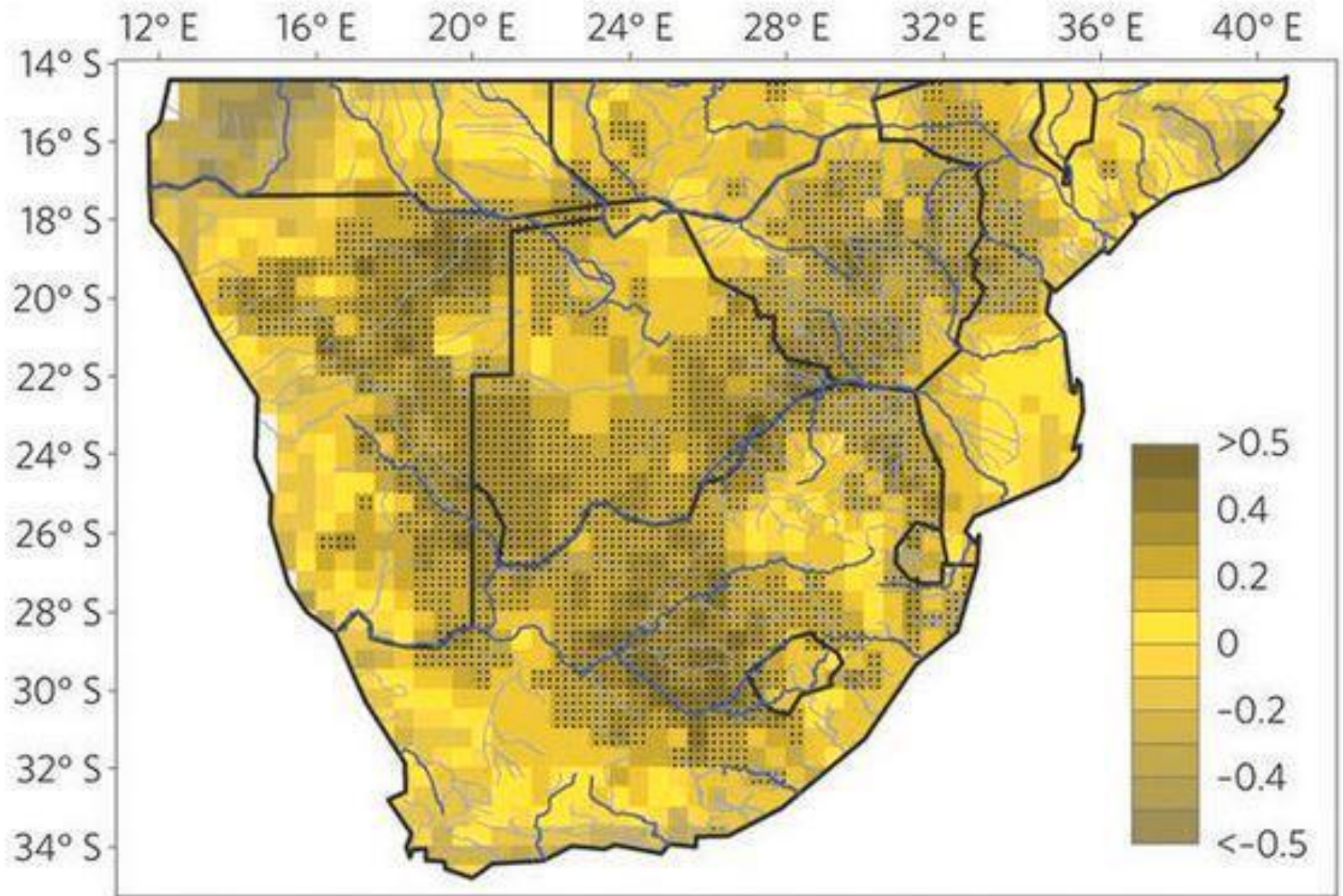
Simulation of severe deuteranopia



CVSimulator mobile phone app

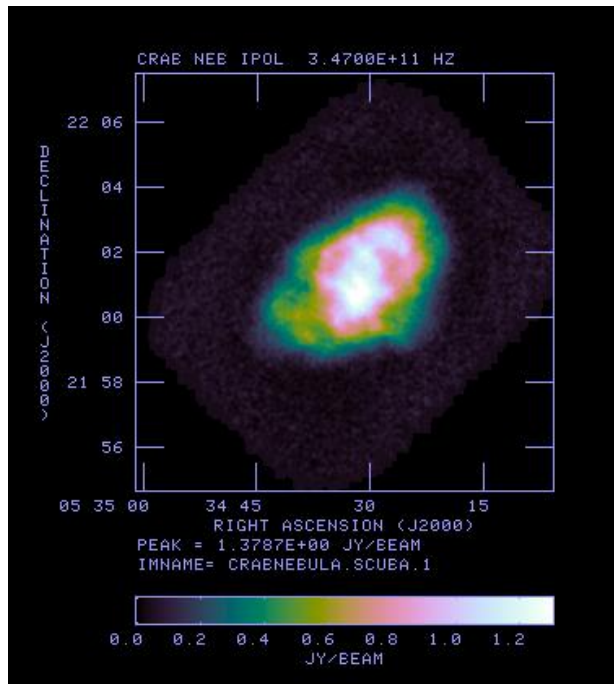


Normal vision



Colour blind simulated vision

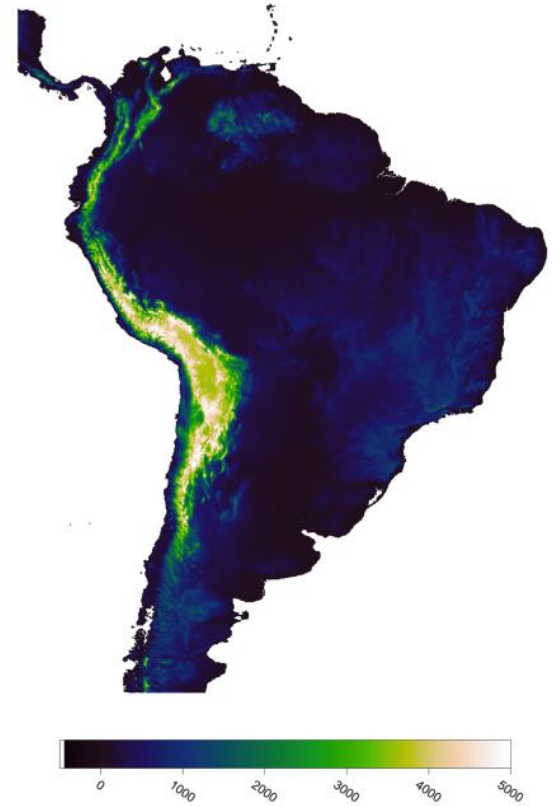
Alternatives?



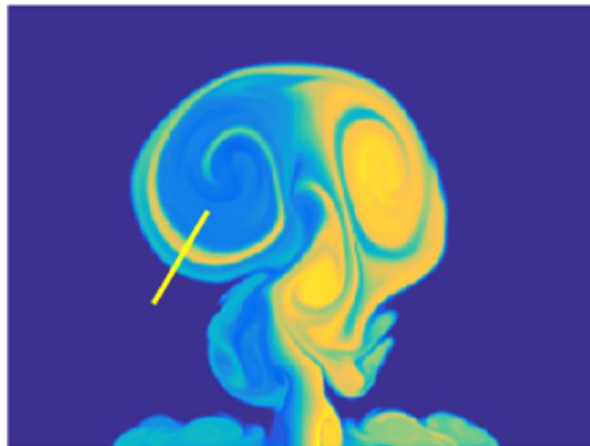
cubehelix



viridis



CIE Lab Linear L



parula

Summary

“Science is not finished until it is communicated”

– Mark Walport, UK Chief Scientific Advisor

- It has never been easier to make amazing (and amazingly awful) scientific graphics
- As a community, we need to encourage a ‘grammar of graphics’ on a day-to-day basis
- Reviewers should criticise poor graphics, in the same way as poor statistics or grammar
- Editors and journals need to promote good practice more actively and strictly enforce more comprehensive guidelines
- #endrainbow tiny.cc/endrainbow