

MAIDENHEAD METEOROLOGICAL OBSERVATIONS FOR SEPTEMBER 2019

DD	N	dd	ff	ww	VV	0900GMT		Temperature			Soil temperatures (depth in cm)						E	SS	Rain	Sun	S	L	H	T	G	F	Press	Rain hrs	Fr. hrs	Pch Evap	
						Temp	RH	Max	Min	Gmin	5	10	20	30	50	100															
01	0	27	02	02	97	18.5	61	21.8	9.6	6.5	15.6	16.1	17.6	18.2	18.2	17.5	90	0	0.0	10.6	0	0	0	0	0	0	1018.5	0.0	0.0	2.4	Number of days with 2019 normal Snow/sleet falling 0 0.0 50% snow cover 09GMT 1.7 0.0 Hail or ice pellets 0 0.1 Thunder 0 1.3 Gale 0 0.1 Fog at 09GMT 0 0.3 Air frost 0 0.0 Ground frost 0 0.2 0.2mm precipitator 14 11.9 1.0mm precipitator 11 8.2 5.0mm precipitator 6 3.1 No sunshine 2 2.5 A mild (at least by day), wet and sunny month. The excess sunshine was largely due to 86.7 h in 9 days from the 13th (under generally high pressure), while most of the rain (67.4 mm) fell in the following days until the end of the month. Many of the falls in this latter spell were heavy ones. As late as the 21st the temperature reached 25.9C.
02	2	27	02	02	97	17.3	69	22.8	6.8	4.3	13.4	14.5	16.3	17.5	17.7	17.4	90	0	0.0	7.1	0	0	0	0	0	1024.5	0.0	0.0	2.7		
03	8	23	05	02	97	19.0	64	21.3	15.0	7.6	16.9	17.2	17.6	17.8	17.6	17.3	90	0	6.3	4.3	0	0	0	0	0	1024.5	2.7	0.0	2.0		
04	7	23	05	01	96	17.8	85	21.1	15.0	13.0	17.3	17.5	18.0	18.0	17.6	17.1	10	0	0.0	7.5	0	0	0	0	0	1015.5	0.0	0.0	2.5		
05	6	31	05	02	97	15.0	63	19.8	11.6	8.6	14.4	15.2	16.8	17.6	17.6	17.1	10	0	tr	8.1	0	0	0	0	0	1026.5	0.0	0.0	1.9		
06	8	23	09	02	97	13.0	88	18.6	8.3	4.5	13.2	13.8	15.6	16.9	17.2	17.1	03	0	1.5	0.3	0	0	0	0	0	1023.5	0.1	0.0	0.9		
07	7	27	09	02	97	14.7	77	17.9	10.4	6.6	14.1	14.4	15.5	16.4	16.7	17.0	10	0	0.0	3.8	0	0	0	0	0	1024.0	0.0	0.0	1.7		
08	1	31	02	02	97	13.7	73	18.8	4.7	1.1	10.6	11.7	14.0	15.7	16.2	16.8	03	0	0.0	10.7	0	0	0	0	0	1027.0	0.0	0.0	1.9		
09	8	23	02	02	97	14.5	81	16.1	11.8	10.0	14.0	14.5	15.2	15.8	16.0	16.6	03	0	0.3	0.0	0	0	0	0	0	1014.0	1.2	0.0	0.7		
10	8	31	02	02	95	14.6	98	21.0	8.1	4.6	12.7	13.1	14.7	15.6	15.7	16.4	03	0	0.0	4.5	0	0	0	0	0	1020.5	0.0	0.0	1.7		
11	6	23	02	02	97	16.7	85	21.6	12.8	9.3	15.1	15.4	16.0	16.0	15.9	16.2	03	0	tr	1.9	0	0	0	0	0	1020.0	0.0	0.0	1.1		
12	7	23	02	02	97	17.6	89	24.6	10.8	7.1	14.9	14.8	15.6	16.1	16.0	16.2	03	0	0.1	3.9	0	0	0	0	0	1028.5	0.1	0.0	1.9		
13	1	36	05	02	97	16.8	65	22.8	12.0	8.0	14.9	15.6	16.8	16.8	16.3	16.1	03	0	0.0	11.2	0	0	0	0	0	1035.5	0.0	0.0	2.5		
14	1	00	00	02	97	15.4	73	24.2	6.9	3.4	12.3	13.2	15.0	16.1	16.3	16.1	03	0	0.0	10.8	0	0	0	0	0	1034.5	0.0	0.0	2.2		
15	1	00	00	02	97	16.6	74	26.4	7.2	3.6	12.4	13.2	15.0	16.0	16.1	16.1	03	0	tr	10.0	0	0	0	0	0	1027.0	0.0	0.0	2.6		
16	8	27	02	60	97	17.1	88	20.7	15.3	10.6	15.5	16.1	16.4	16.5	16.1	16.1	03	0	0.2	0.0	0	0	0	0	0	1021.5	0.5	0.0	0.9		
17	1	31	05	02	97	15.0	67	20.4	7.9	7.6	12.9	13.4	14.3	16.2	16.1	16.0	03	0	0.0	11.2	0	0	0	0	0	1025.5	0.0	0.0	2.5		
18	0	05	02	02	97	14.1	65	21.0	5.6	2.1	11.9	12.4	13.4	15.8	15.9	16.0	03	0	0.0	11.1	0	0	0	0	0	1030.5	0.0	0.0	2.1		
19	1	36	02	02	97	15.4	71	22.8	6.5	3.5	12.7	13.2	13.7	15.4	15.7	16.1	03	0	0.0	10.9	0	0	0	0	0	1032.5	0.0	0.0	1.8		
20	0	09	05	02	96	15.9	70	22.6	7.5	4.5	12.8	13.3	14.0	15.4	15.5	16.1	03	0	0.0	11.0	0	0	0	0	0	1018.5	0.0	0.0	3.1		
21	0	09	05	02	97	16.9	57	25.9	9.4	5.0	12.8	13.3	14.1	15.6	15.6	16.0	03	0	0.6	10.5	0	0	0	0	0	1015.5	1.0	0.0	3.4		
22	7	13	05	02	97	19.5	87	21.7	16.2	11.5	16.5	17.1	16.7	16.4	15.7	16.0	03	0	7.1	0.9	0	0	0	0	0	1003.6	2.9	0.0	0.7		
23	7	23	05	02	97	16.4	78	20.8	12.6	9.5	14.0	14.8	14.9	16.1	15.8	16.0	10	0	26.8	4.2	0	0	0	0	0	1012.0	7.0	0.0	1.1		
24	7	13	09	60	96	16.6	97	19.5	15.2	14.0	15.5	16.2	16.4	16.2	15.9	15.9	20	0	6.7	3.0	0	0	0	0	0	1000.0	4.0	0.0	0.9		
25	8	23	02	21	96	16.5	95	21.2	14.8	13.6	16.3	16.2	16.4	16.5	15.9	15.9	10	0	2.0	4.4	0	0	0	0	0	999.5	2.5	0.0	1.1		
26	8	18	02	60	96	17.2	88	20.4	15.2	11.5	16.6	16.6	16.6	16.5	16.0	16.0	20	0	1.7	4.5	0	0	0	0	0	1002.5	0.6	0.0	1.1		
27	6	18	05	02	97	16.3	78	18.5	12.0	7.5	13.3	14.0	15.3	16.2	16.2	15.9	10	0	4.3	4.8	0	0	0	0	0	1014.5	1.0	0.0	1.3		
28	7	23	09	02	97	15.7	82	19.1	11.3	7.9	13.9	14.1	14.7	15.7	15.9	16.0	10	0	8.8	1.8	0	0	0	0	0	1009.5	7.5	0.0	1.6		
29	8	23	09	60	96	17.1	92	20.4	14.0	13.0	15.5	15.6	15.6	15.8	15.6	15.9	20	0	2.4	1.6	0	0	0	0	0	996.0	1.8	0.0	1.0		
30	7	27	02	02	97	12.6	97	17.1	9.0	5.3	12.8	12.8	14.5	15.7	15.6	15.6	10	0	7.6	0.3	0	0	0	0	0	1012.0	5.8	0.0	0.9		
Monthly means						16.1	79	21.0	10.8	7.5	14.2	14.6	15.6	16.4	16.3	16.4											1018.6				
Monthly totals																				76.4	174.9							38.7	0.0	52.2	
Highest values						19.5		26.4	16.2	14.0	17.3	17.5	18.0	18.2	18.2	17.5			26.8	11.2								7.5	0.0	3.4	
Lowest values						12.6	57	16.1	4.7	1.1	10.6	11.7	13.4	15.4	15.5	15.6															
1981-2010 monthly climatological average						82	19.5	10.7	8.4	13.6	14.1	15.2	15.8	15.9	15.8			53.7	138.5									1016.6	34.6	0.0	48.6

Key

DD: date
07GMT observations
N cloud cover (oktas, 9=obscured) dd wind direction (degrees/10
ff wind speed (knots
ww present weather code
1 cloud decreasing 20 recent drizzle
2 sky not changing 44 fog
3 cloud increasing 63 continuous moderate rain
10 mist 91 light rain after thunderstorm
VV visibility (00-50 metres/100, 94 very poor, 95 poor, 96 moderate, 97 good)
Soil temperatures are for 0700GMT beneath bare soil (5, 10, 20cm) or grass (30, 50, 100cm)

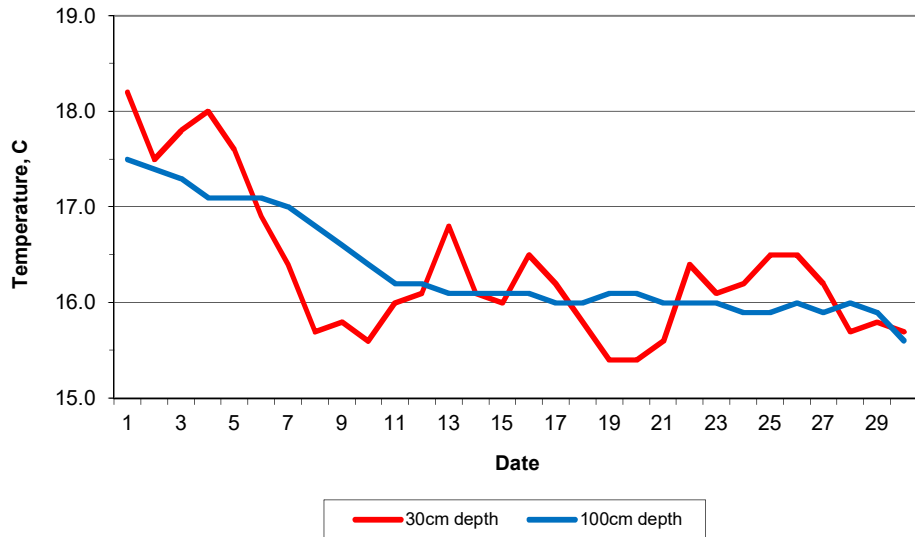
09GMT observations
Temp temperature (degC) RH relative humidity (%)
E state of ground (00 dry, 10 moist, 20 wet, 90 cracked) SS snow depth (cm)
Press air pressure (mb)

24 hour readings
Max maximum temperature (degC) beginning 09GMT Min minimum temperature (degC) ending 09GMT
Gmin grass minimum temperature (degC) ending 09GMT Rain precipitation beginning 09GMT
Sun sunshine (hours) sunrise-sunset Rain hrs hours of rainfall (>0.1mm/h) 09-09GMT
Fr. Hrs hours of air frost (00-24GMT) Pch Evap Piche evaporation (ml) beginning 09GMT

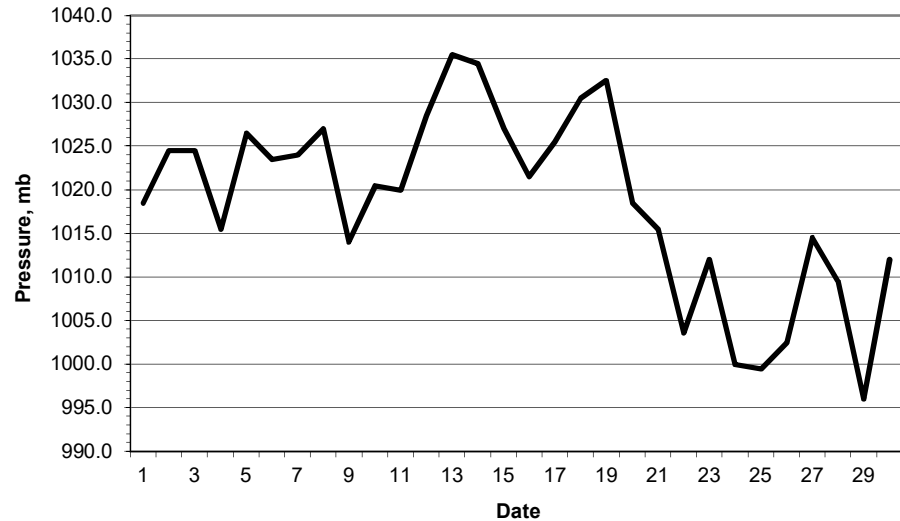
Days with
S snow(5) or sleet(1) falling L 50% snow cover at 09GMT H hail or ice pellets
T thunder heard G gale F fog at 09GMT

This information (and data for earlier months) is also available <http://www.met.rdg.a.uk/~brugg>

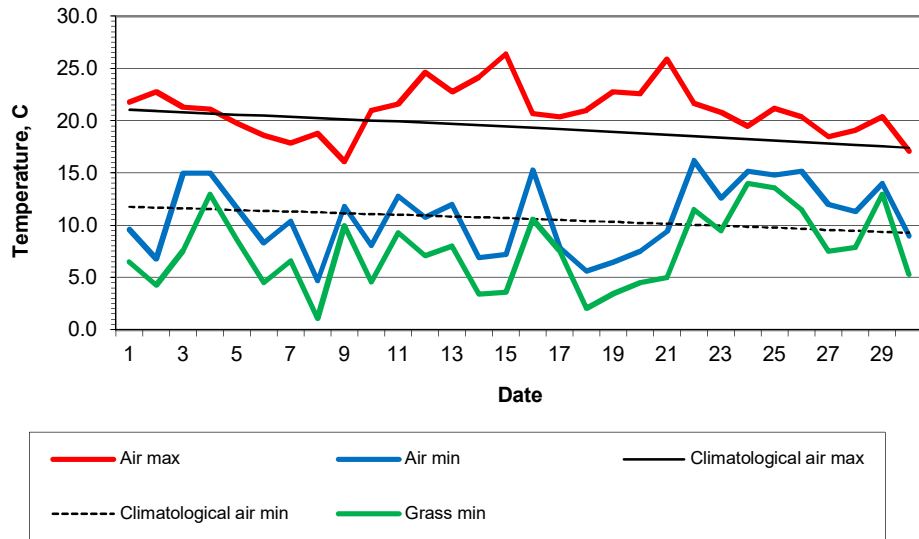
Daily soil temperatures, 0700GMT



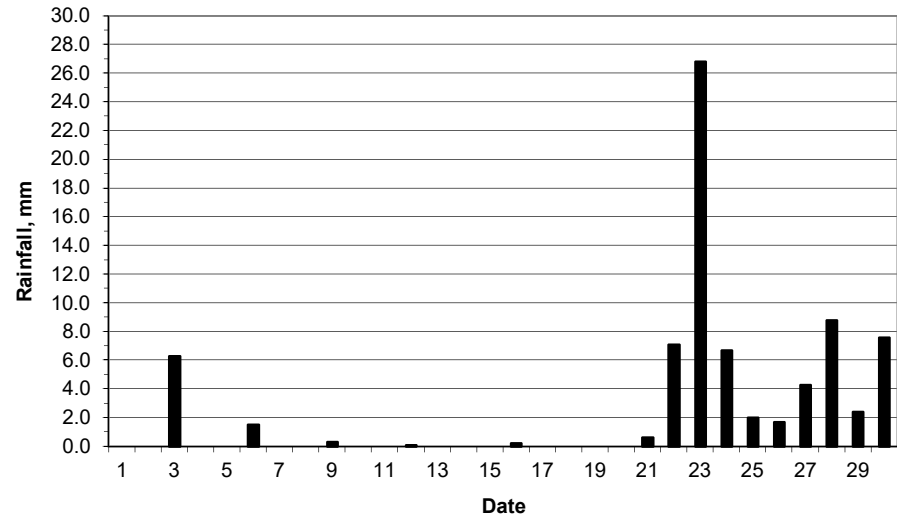
Mean sea level pressure, 0900GMT



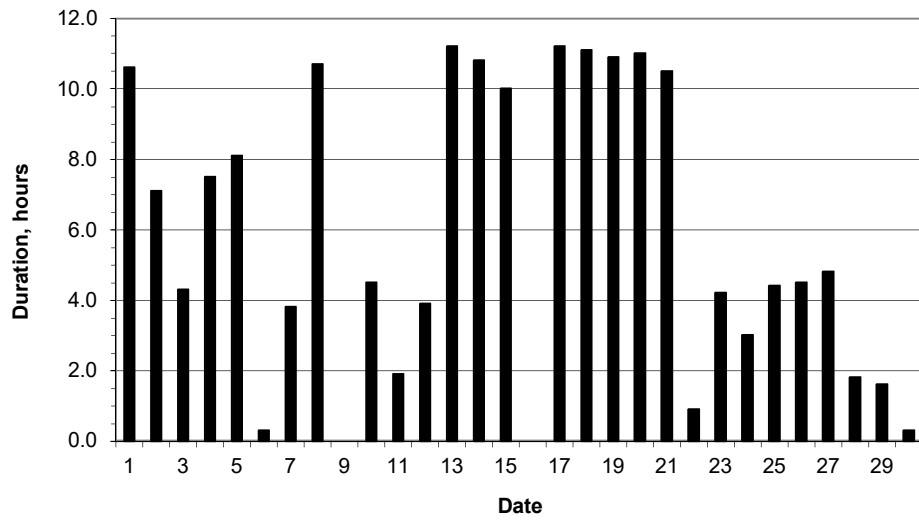
Daily temperature extremes



Daily rainfall



Daily sunshine



Daily evaporation

