

MAIDENHEAD METEOROLOGICAL OBSERVATIONS FOR SEPTEMBER 2016

DD	N	dd	ff	ww	VV	0900GMT		Temperature			Soil temperatures (depth in cm)						E	SS	Rain	Sun	S	L	H	T	G	F	Press	Rain	Fr.	Pch		
						Temp	RH	Max	Min	Gmin	5	10	20	30	50	100												hrs	hrs	Evap		
01	3	27	02	02	97	17.9	82	24.5	11.1	9.0	15.4	16.4	17.4	18.1	17.8	17.3	00	0	0.0	8.7	0	0	0	0	0	0	0	1025.0	0.0	0.0	2.5	Number of days with 2016 normal Snow/sleet falling 0 50% snow cover 09GMT 0 Hail or ice pellets 1 Thunder 2 Gale 0 Fog at 09GMT 0 Air frost 0 Ground frost 0 0.2mm precipitation 14 1.0mm precipitation 9 5.0mm precipitation 1 No sunshine 5 The month was dominated by an unusually late hot day on the 13th when 30.8C was recorded and two violent thunderstorms on the 15th and early 16th (with 1 cm diameter hail and 73.2 mm of rain). The former was the highest temperature recorded locally in September since before 1953; the latter was the second wettest day locally since before 1942.
02	7	22	02	02	97	18.2	81	20.5	13.7	11.2	16.5	16.8	17.7	18.0	17.7	17.3	90	0	0.2	0.0	0	0	0	0	0	0	1020.0	0.3	0.0	1.4		
03	6	18	05	03	97	17.8	81	20.0	10.3	7.7	15.0	15.4	16.6	17.6	17.5	17.2	10	0	4.9	0.9	0	0	0	0	0	0	1018.5	4.3	0.0	1.3		
04	8	27	09	02	97	16.7	85	20.1	15.4	12.5	17.3	17.1	17.4	17.6	17.3	17.1	10	0	4.3	0.1	0	0	0	0	0	0	1012.0	8.2	0.0	1.2		
05	8	13	02	02	95	14.5	95	22.5	14.0	13.9	15.8	16.6	17.2	17.6	17.2	17.1	10	0	0.3	0.2	0	0	0	0	0	0	1019.0	0.5	0.0	0.8		
06	8	00	00	02	96	20.5	89	22.8	14.5	14.9	19.1	19.1	18.7	17.9	17.3	17.0	10	0	0.0	0.5	0	0	0	0	0	0	1024.5	0.0	0.0	1.2		
07	8	09	02	02	96	19.0	84	26.8	18.2	17.5	18.4	18.8	19.0	18.4	17.7	17.0	10	0	0.0	4.7	0	0	0	0	0	0	1020.5	0.0	0.0	2.1		
08	7	27	02	03	87	19.8	70	24.1	13.6	12.1	16.2	16.6	17.7	18.2	17.8	17.1	10	0	0.0	10.0	0	0	0	0	0	0	1011.0	0.0	0.0	3.9		
09	1	22	02	02	97	20.3	77	22.9	15.3	13.0	17.4	17.6	18.0	18.2	17.7	17.1	10	0	2.5	4.6	0	0	0	0	0	0	1015.0	3.0	0.0	2.6		
10	8	18	02	61	96	18.0	95	18.5	17.8	16.0	17.8	18.3	18.5	18.3	17.7	17.1	10	0	4.0	0.0	0	0	0	0	0	0	1012.5	4.3	0.0	0.3		
11	2	00	00	02	94	13.3	96	21.8	7.6	7.4	12.7	14.1	16.3	17.8	17.6	17.1	10	0	0.0	10.7	0	0	0	0	0	0	1019.0	0.0	0.0	1.6		
12	7	00	00	02	97	17.3	96	24.1	9.4	7.6	13.9	14.3	15.7	17.0	17.1	17.1	10	0	0.0	2.0	0	0	0	0	0	0	1013.0	0.0	0.0	1.5		
13	2	00	00	02	97	21.6	82	30.8	13.8	11.7	15.6	15.9	17.0	17.3	17.1	17.0	10	0	0.0	10.1	0	0	0	0	0	0	1010.0	0.0	0.0	2.9		
14	1	09	05	02	97	24.0	71	28.0	17.3	14.5	17.7	17.8	18.5	18.3	17.4	16.9	00	0	0.0	10.1	0	0	0	0	0	0	1010.0	0.0	0.0	2.5		
15	3	31	02	02	97	21.4	85	27.7	13.3	11.1	16.0	16.7	18.0	18.4	17.7	17.0	00	0	73.2	8.6	0	0	6	1	0	0	1010.5	7.3	0.0	1.9		
16	8	31	02	61	95	15.6	96	18.1	14.6	13.3	17.0	17.3	18.0	18.4	18.1	17.1	10	0	1.0	3.5	0	0	0	1	0	0	1012.0	1.0	0.0	1.7		
17	7	31	05	02	97	13.1	84	16.0	12.3	9.9	11.3	13.2	14.2	17.2	17.2	17.0	10	0	0.0	0.2	0	0	0	0	0	0	1021.0	0.0	0.0	0.9		
18	8	31	02	05	96	15.4	91	20.3	13.1	12.9	13.9	14.7	15.6	16.6	16.6	16.9	10	0	0.0	1.0	0	0	0	0	0	0	1023.0	0.0	0.0	1.0		
19	8	31	02	02	97	15.4	92	18.7	12.8	11.7	13.4	14.3	15.5	17.0	16.8	16.8	10	0	3.9	0.0	0	0	0	0	0	0	1023.0	6.8	0.0	0.3		
20	8	04	02	61	96	14.6	96	18.0	14.3	13.2	13.2	14.8	16.0	16.8	16.6	16.7	10	0	tr	0.0	0	0	0	0	0	0	1022.0	0.0	0.0	0.6		
21	9	09	02	02	96	17.8	82	20.8	13.7	12.6	15.4	15.5	16.1	16.9	16.6	16.7	10	0	0.0	1.8	0	0	0	0	0	0	1019.5	0.0	0.0	1.1		
22	6	18	02	02	97	15.7	87	20.7	13.0	11.4	13.8	14.4	15.7	17.0	16.7	16.9	10	0	0.0	5.5	0	0	0	0	0	0	1020.0	0.0	0.0	1.6		
23	3	22	02	02	97	14.0	78	20.4	6.5	4.9	12.0	12.2	13.9	16.7	16.4	16.6	10	0	0.0	7.5	0	0	0	0	0	0	1026.0	0.0	0.0	1.7		
24	6	18	02	03	96	17.1	83	22.3	8.9	6.7	13.6	14.0	14.6	16.0	16.1	16.6	10	0	3.5	4.4	0	0	0	0	0	0	1018.0	2.2	0.0	3.1		
25	8	22	02	02	97	15.1	91	19.5	14.5	10.5	15.6	15.7	16.1	16.3	16.0	16.4	10	0	0.2	7.9	0	0	0	0	0	0	1013.0	0.3	0.0	1.4		
26	8	13	02	60	97	12.5	97	16.9	7.6	5.1	12.2	12.9	14.6	16.0	16.0	16.4	10	0	1.2	0.2	0	0	0	0	0	0	1022.0	2.5	0.0	0.7		
27	8	18	02	02	97	16.0	87	19.0	8.9	6.2	14.1	14.1	14.5	15.4	15.6	16.2	10	0	tr	0.0	0	0	0	0	0	0	1022.0	0.0	0.0	0.7		
28	3	22	02	01	97	15.1	89	22.1	11.0	8.0	13.3	13.4	14.7	15.4	15.5	16.1	10	0	0.7	4.6	0	0	0	0	0	0	1025.5	1.4	0.0	1.5		
29	8	27	09	21	97	15.5	89	19.8	15.1	10.3	16.4	16.6	16.5	16.1	15.6	16.0	10	0	0.0	4.0	0	0	0	0	0	0	1014.5	0.0	0.0	1.7		
30	1	22	02	02	97	14.6	81	18.3	8.9	6.0	11.9	13.1	14.8	15.9	15.8	16.0	10	0	0.2	6.9	0	0	0	0	0	0	1013.5	0.2	0.0	1.6		
Monthly means						16.9	86	21.5	12.7	10.8	15.1	15.6	16.5	17.2	16.9	16.8												1017.9				
Monthly totals																				100.1	118.7							42.3	0.0	47.3		
Highest values						24.0		30.8	18.2	17.5	19.1	19.1	19.0	18.4	18.1	17.3			73.2	10.7								8.2	0.0	3.9		
Lowest values						12.5	70	16.0	6.5	4.9	11.3	12.2	13.9	15.4	15.5	16.0																
1981-2010 monthly climatological averages						82	19.5	10.7	8.4	13.6	14.1	15.2	15.8	15.9	15.8			53.7	138.5										1016.6	34.6	0.0	48.6

Key

DD: date

07GMT observations

N	cloud cover (oktas, 9=obscured)	dd	wind direction (degrees/10)
ff	wind speed (knots)		
ww	present weather code		
1	cloud decreasing	20	recent drizzle
2	sky not changing	44	fog
3	cloud increasing	63	continuous moderate rain
10	mist	91	light rain after thunderstorm
VV	visibility (00-50 metres/100, 94 very poor, 95 poor, 96 moderate, 97 good)		

Soil temperatures are for 0700GMT beneath bare soil (5, 10, 20cm) or grass (30, 50, 100cm)

09GMT observations

Temp	temperature (degC)	RH	relative humidity (%)
E	state of ground (00 dry, 10 moist, 20 wet, 90 cracked)	SS	snow depth (cm)
Press	air pressure (mb)		

24 hour readings

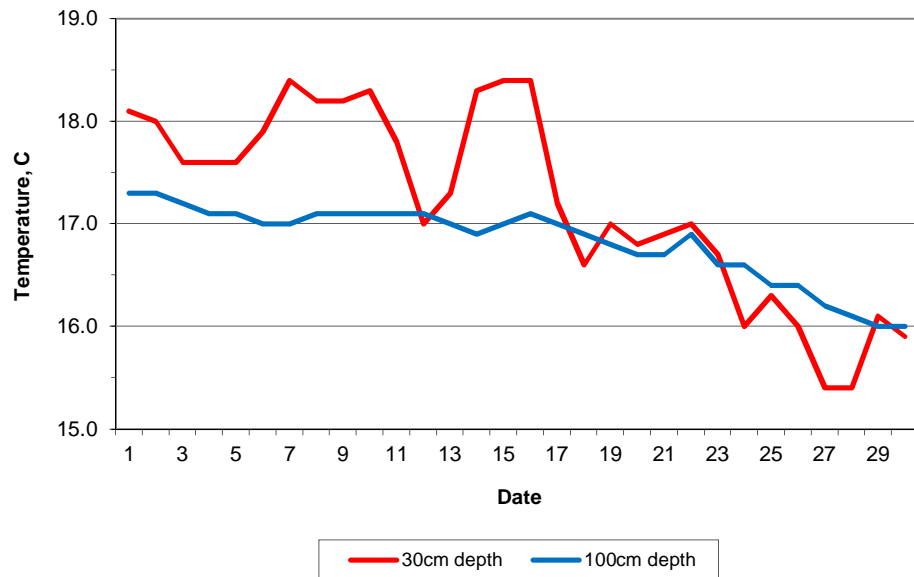
Max	maximum temperature (degC) beginning 09GMT	Min	minimum temperature (degC) ending 09GMT
Gmin	grass minimum temperature (degC) ending 09GMT	Rain	precipitation beginning 09GMT
Sun	sunshine (hours) sunrise-sunset	Rain hrs	hours of rainfall (>0.1mm/h) 09-09GMT
Fr. Hrs	hours of air frost (00-24GMT)	Pch Evap	Piche evaporation (ml) beginning 09GMT

Days with

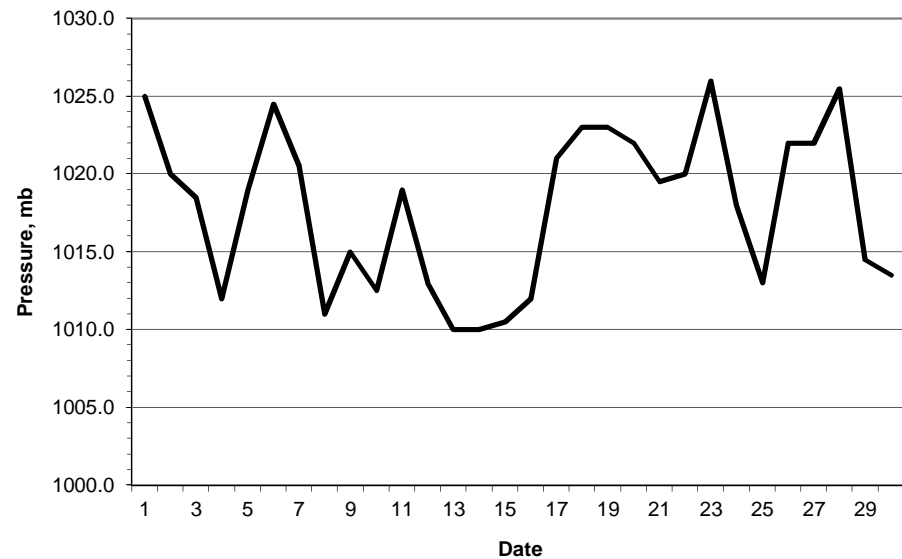
S	snow(5) or sleet(1) falling	L	50% snow cover at 09GMT	H	hail or ice pellets
T	thunder heard	G	gale	F	fog at 09GMT

This information (and data for earlier months) is also available at <http://www.met.rdg.a.uk/~brugge>

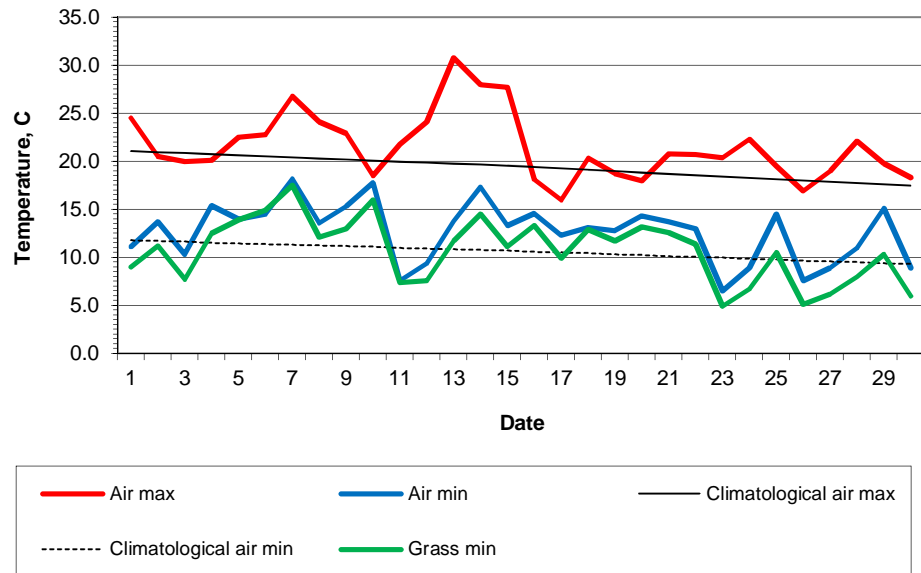
Daily soil temperatures, 0700GMT



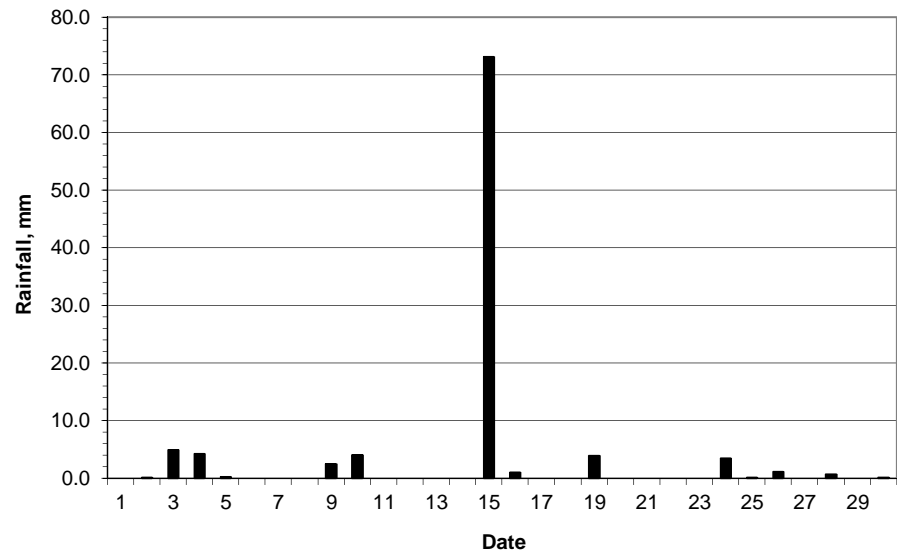
Mean sea level pressure, 0900GMT



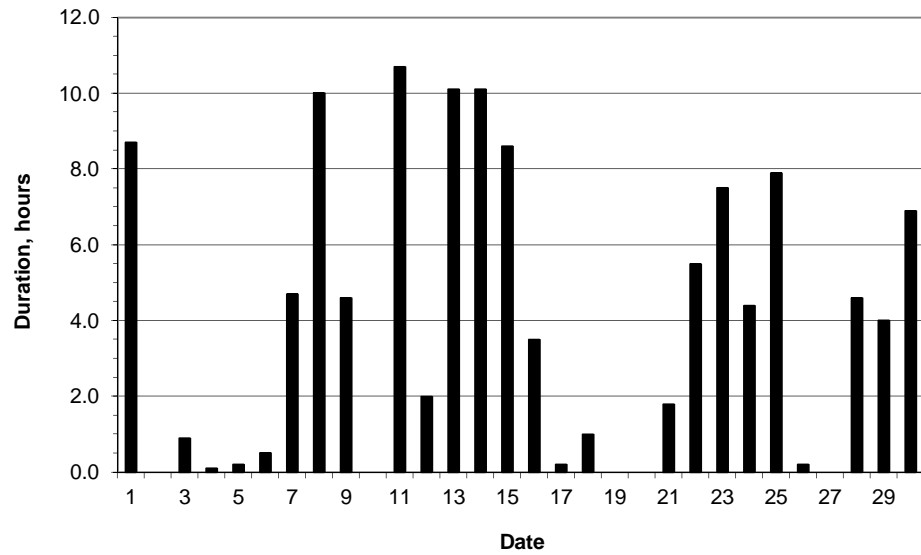
Daily temperature extremes



Daily rainfall



Daily sunshine



Daily evaporation

