

MAIDENHEAD METEOROLOGICAL OBSERVATIONS FOR SEPTEMBER 2013

DD	N	dd	ff	ww	VV	0900GMT		Temperature				Soil temperatures (depth in cm)						E	SS	Rain	Sun	S	L	H	T	G	F	Press	Rain	Fr.	Pch				
						Temp	RH	Max	Min	Gmin	5	10	20	30	50	100	hrs												hrs	Evap					
01	8	27	02	02	97	15.0	74	23.2	8.2	5.2	14.8	15.5	16.9	17.8	17.4	16.5	00	0	0.0	6.5	0	0	0	0	0	0	0	0	1028.5	0.0	0.0	2.4	Number of		
02	5	27	05	02	97	18.3	68	26.9	10.7	6.8	15.1	15.9	17.1	17.7	17.4	16.5	00	0	0.0	10.8	0	0	0	0	0	0	0	0	1026.5	0.0	0.0	2.1	days with		
03	1	00	00	02	97	18.5	85	25.0	12.2	9.6	15.7	16.4	17.4	18.0	17.4	16.6	00	0	0.0	2.7	0	0	0	0	0	0	0	1026.5	0.0	0.0	1.5	2013 normal			
04	1	00	00	10	96	20.8	76	29.0	11.3	8.1	15.5	16.6	17.5	17.9	17.5	16.6	00	0	0.0	12.1	0	0	0	0	0	0	0	1021.0	0.0	0.0	3.1	Snow/sleet falling			
05	3	00	00	10	95	19.9	82	30.4	11.8	8.8	16.2	16.8	17.9	18.1	17.7	16.6	00	0	0.2	11.0	0	0	0	0	0	0	0	1010.5	0.3	0.0	3.1	0 0.0			
06	8	27	02	21	97	14.5	89	17.9	13.0	11.1	16.8	17.7	18.5	18.5	17.8	16.7	10	0	0.5	3.2	0	0	0	0	0	0	0	1006.5	0.9	0.0	0.8	50% snow cover 09GMT			
07	7	13	02	80	97	16.4	68	20.4	9.6	5.8	13.4	14.7	16.7	17.4	17.4	16.7	10	0	0.0	4.5	0	0	0	0	0	0	0	1010.0	0.0	0.0	2.0	0 0.0			
08	5	22	02	02	97	15.4	74	18.3	6.4	3.9	14.2	14.2	16.5	16.8	17.1	16.7	00	0	5.0	5.0	0	0	1	0	0	0	0	1017.0	6.5	0.0	1.0	Hail or ice pellets			
09	8	04	02	50	96	11.7	94	14.4	7.7	4.0	12.9	13.7	15.0	16.2	16.7	16.5	10	0	7.9	0.1	0	0	0	0	0	0	0	1015.5	4.3	0.0	0.4	0 0.1			
10	6	27	05	02	97	14.4	82	17.0	8.8	5.9	12.3	12.7	14.0	15.4	16.2	16.4	10	0	tr	3.6	0	0	0	0	0	0	0	1021.0	0.0	0.0	1.7	Thunder			
11	7	31	05	02	97	14.3	74	17.4	11.7	9.1	12.8	13.4	14.5	15.4	15.8	16.1	10	0	4.0	0.1	0	0	0	0	0	0	0	1022.5	7.0	0.0	0.6	0 1.3			
12	8	27	02	02	96	14.1	95	20.5	12.7	11.6	14.3	14.4	15.0	15.4	15.6	16.0	10	0	1.8	3.9	0	0	0	0	0	0	0	1020.0	3.0	0.0	0.8	Gale			
13	8	00	00	02	95	17.9	95	18.6	13.1	11.1	16.1	16.1	16.0	15.9	15.6	15.8	10	0	30.8	0.0	0	0	0	0	0	0	0	1018.0	13.3	0.0	0.6	0 0.1			
14	6	27	02	02	97	10.8	94	14.2	9.4	9.0	13.2	13.9	15.1	15.9	15.7	15.8	10	0	0.0	0.0	0	0	0	0	0	0	0	1015.5	0.0	0.0	0.6	Fog at 09GMT			
15	1	18	02	02	97	12.3	89	15.3	5.4	2.4	10.3	10.8	13.5	14.9	15.4	15.6	10	0	2.5	2.2	0	0	0	0	0	0	0	1013.0	2.9	0.0	0.7	2 0.3			
16	0	22	09	02	97	13.1	66	16.4	5.7	3.0	10.6	11.6	13.2	14.4	14.8	15.5	10	0	0.0	10.2	0	0	0	0	0	0	0	1003.0	0.0	0.0	1.8	Air frost			
17	7	22	02	03	97	10.6	78	14.3	7.0	4.8	11.0	11.5	12.6	13.9	14.5	15.3	10	0	6.2	0.0	0	0	0	0	0	0	0	1003.0	7.2	0.0	0.4	0 0.0			
18	7	31	05	02	97	12.5	90	16.6	10.3	7.1	12.5	13.0	14.8	14.1	14.4	15.0	10	0	tr	3.0	0	0	0	0	0	0	0	0	1003.0	0.0	0.0	1.4	Ground frost		
19	7	22	05	02	97	11.2	92	16.4	6.1	2.4	11.0	11.5	12.9	13.7	14.4	15.0	10	0	1.2	1.5	0	0	0	0	0	0	0	1010.5	1.0	0.0	1.0	0 0.2			
20	8	27	05	02	97	12.9	88	20.4	8.7	4.5	11.7	12.2	13.5	13.4	14.0	14.7	10	0	0.0	7.0	0	0	0	0	0	0	0	1018.5	0.0	0.0	1.2	0.2mm precipitation			
21	8	18	05	02	97	13.8	91	19.3	9.0	5.6	12.5	13.2	14.0	13.8	14.3	14.6	10	0	tr	0.0	0	0	0	0	0	0	0	1023.5	0.0	0.0	0.7	10 11.9			
22	8	27	05	10	10	16.8	93	20.8	13.8	9.0	15.5	16.0	16.2	14.3	14.4	14.5	10	0	tr	3.0	0	0	0	0	0	0	0	1028.0	0.0	0.0	0.7	1.0mm precipitation			
23	8	13	02	42	09	16.2	94	17.6	13.3	8.9	15.5	16.0	16.5	14.9	14.9	14.5	10	0	tr	1.0	0	0	0	0	0	0	0	1025.5	0.0	0.0	0.1	8 8.2			
24	8	04	02	44	02	12.2	94	21.8	8.7	6.1	12.5	13.2	15.0	14.4	14.8	14.7	10	0	0.0	4.5	0	0	0	0	0	1	1016.5	0.0	0.0	0.2	5.0mm precipitation				
25	8	00	00	44	09	14.7	97	21.7	12.2	8.9	13.6	14.8	14.5	14.7	14.5	14.7	10	0	0.1	3.5	0	0	0	0	0	1	1011.0	0.1	0.0	0.8	4 3.1				
26	8	09	05	02	97	14.2	82	21.6	11.8	7.9	14.5	15.1	15.4	15.3	14.7	14.6	10	0	0.0	2.2	0	0	0	0	0	0	0	1016.5	0.0	0.0	1.7	No sunshine			
27	7	09	02	02	97	14.3	77	19.3	10.0	7.8	12.8	13.4	14.4	15.0	14.8	14.7	10	0	0.0	3.6	0	0	0	0	0	0	0	1016.0	0.0	0.0	1.6	4 2.5			
28	7	04	05	02	97	14.0	84	19.1	11.0	8.4	13.5	13.4	14.1	14.7	14.7	14.8	10	0	tr	0.5	0	0	0	0	0	0	0	1010.0	0.0	0.0	2.1	Overall, temperatures close to			
29	7	09	09	02	97	14.0	82	20.4	13.6	11.8	14.3	14.3	14.5	14.8	14.7	14.8	10	0	0.0	6.8	0	0	0	0	0	0	0	1007.0	0.0	0.0	1.6	average after a warm start.			
30	8	09	02	02	97	14.7	83	18.8	12.6	9.2	13.8	14.0	14.7	15.0	14.7	14.7	00	0	0.0	0.2	0	0	0	0	0	0	0	1005.5	0.0	0.0	1.2	Sunshine on the low side and			
Monthly means						14.7	84	19.8	10.2	7.3	13.6	14.2	15.3	15.6	15.6														1015.7				it would ave been a dry month		
Monthly totals																				60.2	112.7								46.5	0.0	37.9	were it not for the large fall of			
Highest values																																	30.8mm on the 13th.		
Lowest values						20.8		30.4	13.8	11.8	16.8	17.7	18.5	18.5	17.8	16.7				30.8	12.1									13.3	0.0	3.1			
1981-2010 monthly climatological averages						10.6	66	14.2	5.4	2.4	10.3	10.8	12.6	13.4	14.0	14.5																			
						82	19.5	10.7	8.4	13.6	14.1	15.2	15.8	15.9	15.8				53.7	138.5									1016.6	34.6	0.0	48.6			

Key

DD: date

07GMT observations

N	cloud cover (oktas, 9=obscured)	dd	wind direction (degrees/10)
ff	wind speed (knots)		
ww	present weather code		
1	cloud decreasing	20	recent drizzle
2	sky not changing	44	fog
3	cloud increasing	63	continuous moderate rain
10	mist	91	light rain after thunderstorm
VV	visibility (00-50 metres/100, 94 very poor, 95 poor, 96 moderate, 97 good)		

Soil temperatures are for 0700GMT beneath bare soil (5, 10, 20cm) or grass (30, 50, 100cm)

09GMT observations

Temp	temperature (degC)	RH	relative humidity (%)
E	state of ground (00 dry, 10 moist, 20 wet, 90 cracked)	SS	snow depth (cm)
Press	air pressure (mb)		

24 hour readings

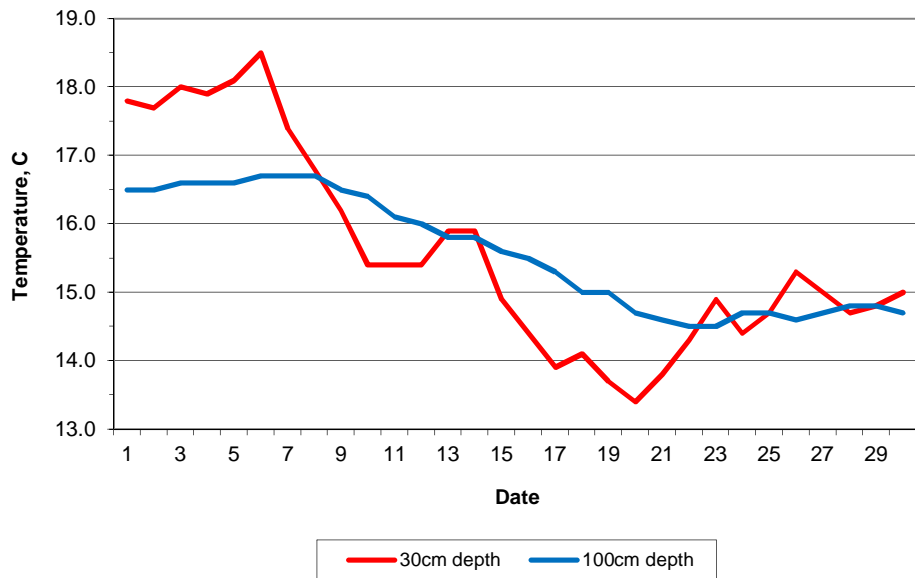
Max	maximum temperature (degC) beginning 09GMT	Min	minimum temperature (degC) ending 09GMT
Gmin	grass minimum temperature (degC) ending 09GMT	Rain	precipitation beginning 09GMT
Sun	sunshine (hours) sunrise-sunset	Rain hrs	hours of rainfall (>0.1mm/h) 09-09GMT
Fr. Hrs	hours of air frost (00-24GMT)	Pch Evap	Piche evaporation (ml) beginning 09GMT

Days with

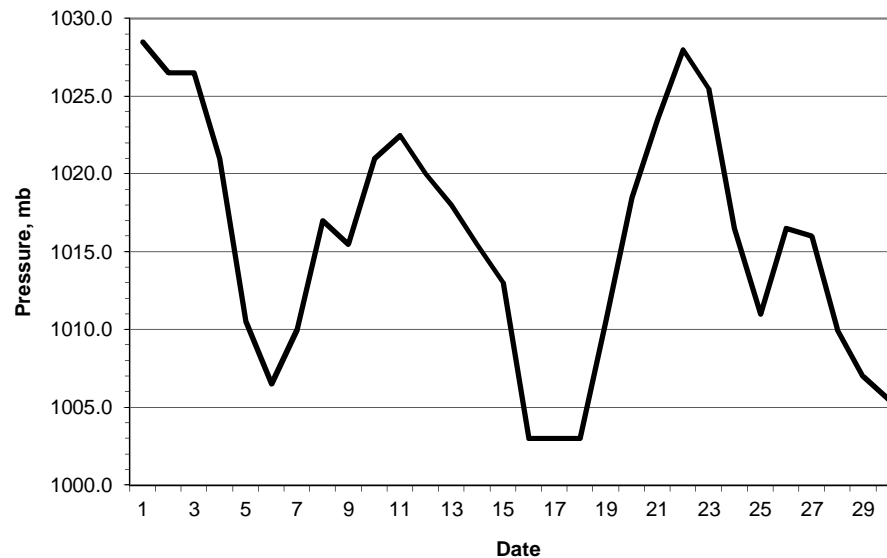
S	snow(5) or sleet(1) falling	L	50% snow cover at 09GMT	H	hail or ice pellets
T	thunder heard	G	gale	F	fog at 09GMT

This information (and data for earlier months) is also available at <http://www.met.rdg.a.uk/~brugge>

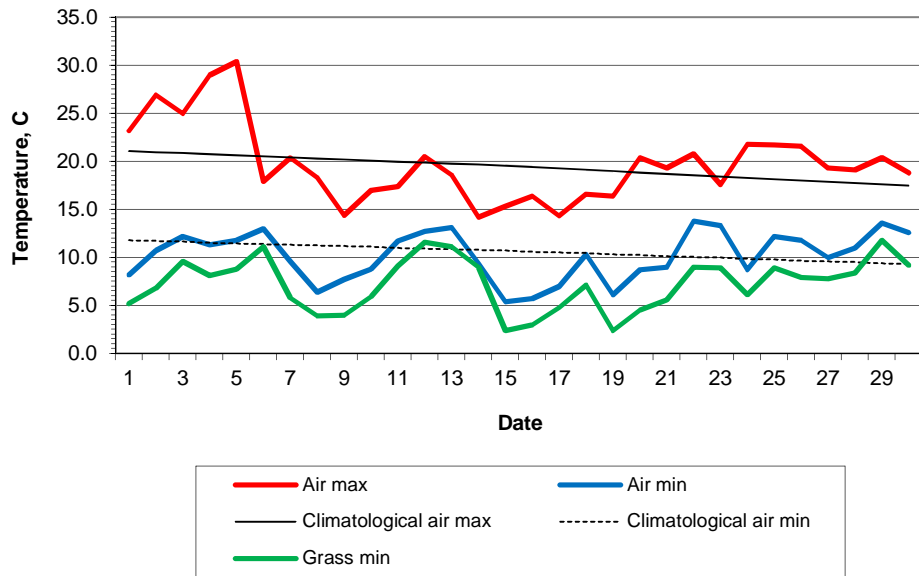
Daily soil temperatures, 0700GMT



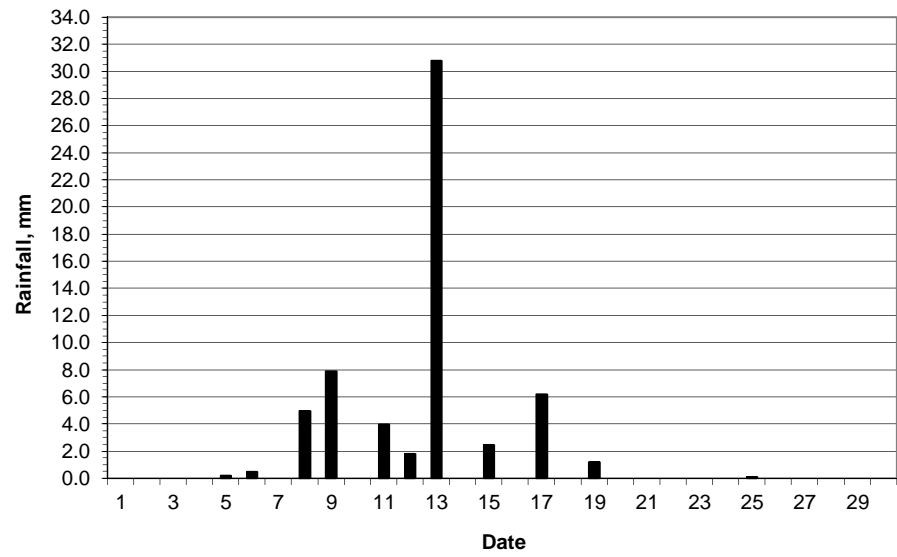
Mean sea level pressure, 0900GMT



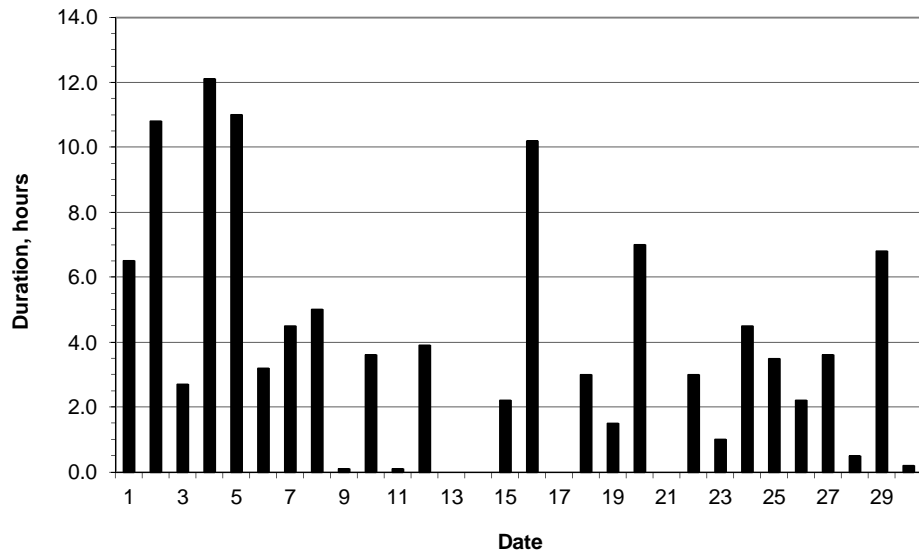
Daily temperature extremes



Daily rainfall



Daily sunshine



Daily evaporation

