

MAIDENHEAD METEOROLOGICAL OBSERVATIONS FOR SEPTEMBER 2011

DD	N	dd	ff	ww	VV	0900GMT		Temperature			Soil temperatures (depth in cm)						E	SS	Rain	Sun	S	L	H	T	G	F	Press	Rain	Fr.	Pch			
						Temp	RH	Max	Min	Gmin	5	10	20	30	50	100												hrs	hrs	Evap			
01	3	03	02	02	97	17.6	74	21.6	8.0	7.7	13.2	13.5	14.7	15.9	15.8	15.7	10	0	0.0	9.5	0	0	0	0	0	0	0	1015.5	0.0	0.0	2.1	Number of days with 2011 normal Snow/sleet falling 0 0.0 Hail or ice pellets 0 0.2 Thunder 0 1.2 Gale 0 0.2 Fog at 09GMT 0 0.4 Air frost 0 0.0 Ground frost 0 0.3 0.2mm precipitation 12 12.5 1.0mm precipitation 8 9.1 5.0mm precipitation 1 3.7 No sunshine 1 2.9 A dry, warm and sunny month. The outstanding feature of the month was the unusual rise in temperature at the end of the month when 28.5C was recorded. This is the highest temperature on record during the final three days of September since before 1953.	
02	4	33	05	02	97	18.5	83	26.9	11.4	8.6	14.3	14.5	15.2	16.0	16.0	15.9	10	0	0.0	9.0	0	0	0	0	0	0	1012.0	0.0	0.0	2.1			
03	8	20	09	02	96	18.0	81	22.6	13.0	10.0	16.0	16.5	16.5	16.6	16.1	15.8	00	0	0.0	4.0	0	0	0	0	0	0	1009.5	0.0	0.0	1.9			
04	8	17	05	02	97	18.0	87	18.8	13.4	10.0	16.0	16.5	16.5	16.6	16.2	15.9	00	0	17.9	2.3	0	0	0	0	0	0	1006.0	3.8	0.0	1.9			
05	6	21	09	02	97	15.6	80	19.6	9.6	7.2	14.5	14.4	15.3	16.2	16.0	15.7	10	0	3.0	5.7	0	0	0	0	0	0	1010.0	5.4	0.0	1.4			
06	8	22	13	63	96	16.8	93	18.6	9.0	7.5	15.0	15.4	15.8	16.1	15.9	15.6	10	0	1.1	0.0	0	0	0	0	0	0	1006.5	0.3	0.0	1.4			
07	7	23	05	02	97	14.9	80	17.4	11.2	10.0	13.6	13.7	14.9	15.6	15.7	15.5	10	0	0.6	0.1	0	0	0	0	0	0	1012.0	3.2	0.0	1.5			
08	8	22	09	02	97	15.1	78	19.5	12.6	11.9	13.6	14.2	15.0	15.5	15.6	15.4	10	0	2.4	0.3	0	0	0	0	0	0	1009.5	3.0	0.0	0.8			
09	8	22	02	02	97	19.1	84	21.1	15.1	12.8	16.2	15.7	15.9	15.6	15.7	15.4	10	0	0.1	0.4	0	0	0	0	0	0	1010.5	0.1	0.0	1.2			
10	8	16	05	02	97	20.4	82	22.7	16.3	13.3	16.7	16.8	15.8	16.3	15.5	15.4	10	0	3.9	1.0	0	0	0	0	0	0	1004.0	1.7	0.0	1.7			
11	1	22	13	01	97	17.5	78	21.2	14.2	12.0	15.6	15.6	16.2	16.5	15.9	15.4	10	0	0.6	6.2	0	0	0	0	0	0	1005.0	2.7	0.0	2.2			
12	8	21	13	50	96	19.9	81	21.4	15.3	14.0	16.2	16.4	16.4	16.5	16.1	15.4	10	0	0.1	5.7	0	0	0	0	0	0	1001.0	0.1	0.0	2.3			
13	7	27	05	02	97	16.0	67	18.5	11.3	8.6	14.0	14.2	15.8	16.3	16.2	15.6	10	0	1.0	7.3	0	0	0	0	0	0	1011.5	0.8	0.0	2.0			
14	0	31	02	02	97	13.5	76	20.0	8.4	5.6	12.1	12.8	14.5	15.6	15.8	15.6	10	0	0.0	11.6	0	0	0	0	0	0	1018.5	0.0	0.0	1.5			
15	4	00	00	03	97	14.5	78	21.2	6.2	4.3	11.3	12.1	14.1	15.4	15.6	15.5	10	0	0.0	10.6	0	0	0	0	0	0	1021.0	0.0	0.0	1.9			
16	7	09	05	02	97	16.9	73	22.0	10.0	5.6	13.8	13.8	14.7	15.4	15.4	15.4	10	0	tr	5.3	0	0	0	0	0	0	1015.0	0.0	0.0	1.9			
17	3	22	02	02	97	16.7	72	18.8	13.8	10.7	14.4	14.8	15.5	15.7	15.5	15.4	00	0	2.1	4.2	0	0	0	0	0	0	1007.0	2.0	0.0	1.1			
18	7	22	05	02	97	12.0	90	16.1	6.0	4.5	11.7	12.0	13.0	15.2	15.4	15.4	10	0	0.1	0.5	0	0	0	0	0	0	1003.5	0.1	0.0	1.1			
19	7	22	13	02	97	15.7	81	18.2	7.7	5.8	11.6	12.2	13.8	14.8	15.1	15.3	10	0	0.0	3.3	0	0	0	0	0	0	1013.0	0.0	0.0	1.8			
20	8	21	09	02	97	17.3	83	19.5	9.5	8.1	14.3	14.7	15.0	15.1	15.2	15.1	10	0	4.3	0.2	0	0	0	0	0	0	1018.0	5.9	0.0	1.0			
21	8	32	05	02	96	14.9	96	18.9	13.2	12.9	14.8	15.0	15.4	15.4	15.2	15.1	10	0	0.1	5.4	0	0	0	0	0	0	1017.5	0.1	0.0	1.8			
22	6	27	02	02	97	16.5	81	19.6	12.1	9.9	13.5	14.0	15.0	15.3	15.3	15.1	10	0	0.0	3.8	0	0	0	0	0	0	1020.0	0.0	0.0	1.4			
23	6	21	02	02	95	14.9	84	19.6	7.6	6.4	12.2	12.9	14.7	15.3	15.2	15.1	10	0	0.0	9.0	0	0	0	0	0	0	1019.5	0.0	0.0	1.9			
24	6	24	02	02	97	15.9	86	20.4	7.1	6.0	11.6	12.6	13.9	15.0	15.2	15.1	10	0	0.0	4.1	0	0	0	0	0	0	1014.5	0.0	0.0	2.2			
25	7	23	02	02	97	18.8	82	21.4	9.6	8.5	13.9	13.6	14.2	14.9	15.1	15.1	10	0	0.5	4.9	0	0	0	0	0	0	1015.5	0.3	0.0	1.7			
26	8	20	02	02	96	17.8	89	22.0	14.8	12.1	15.9	15.4	15.6	15.4	15.2	15.1	10	0	0.3	2.6	0	0	0	0	0	0	1019.5	0.3	0.0	1.0			
27	9	00	00	45	06	15.1	95	21.1	11.3	8.8	13.3	14.9	15.6	15.6	15.4	15.0	10	0	0.0	4.8	0	0	0	0	0	0	1028.5	0.0	0.0	1.1			
28	1	14	02	02	96	19.8	92	26.6	10.2	6.1	13.2	13.8	15.1	15.5	15.4	15.1	10	0	0.0	10.8	0	0	0	0	0	0	1027.0	0.0	0.0	3.3			
29	0	15	02	02	96	21.3	80	28.3	11.2	8.4	13.8	14.1	15.6	15.6	15.4	15.1	00	0	0.0	10.9	0	0	0	0	0	0	1023.0	0.0	0.0	1.9			
30	0	14	02	02	97	21.1	88	28.5	10.9	8.0	13.8	14.4	15.8	16.0	15.6	15.1	00	0	0.0	11.0	0	0	0	0	0	0	1022.5	0.0	0.0	2.4			
Monthly means						17.0	82	21.1	11.0	8.8	14.0	14.4	15.2	15.7	15.6	15.4												1013.9					
Monthly totals																				38.1	154.5							29.8	0.0	51.5			
Highest values						21.3		28.5	16.3	14.0	16.7	16.8	16.5	16.6	16.2	15.9			17.9	11.6								5.9	0.0	3.3			
Lowest values						12.0	67	16.1	6.0	4.3	11.3	12.0	13.0	14.8	15.1	15.0																	
1971-2000 monthly climatological averages						83	19.1	10.3	7.9	13.3	13.9	15.0	15.6	15.5	15.4					60.3	131.7								1016.4	41.2	0.0	46.2	

Key

DD: date  
07GMT observations  
N cloud cover (oktas, 9=obscured) dd wind direction (degrees/10)  
ff wind speed (knots)  
ww present weather code  
1 cloud decreasing 20 recent drizzle  
2 sky not changing 44 fog  
3 cloud increasing 63 continuous moderate rain  
10 mist 91 light rain after thunderstorm  
VV visibility (00-50 metres/100, 94 very poor, 95 poor, 96 moderate, 97 good)  
Soil temperatures are for 0700GMT beneath bare soil (5, 10, 20cm) or grass (30, 50, 100cm)

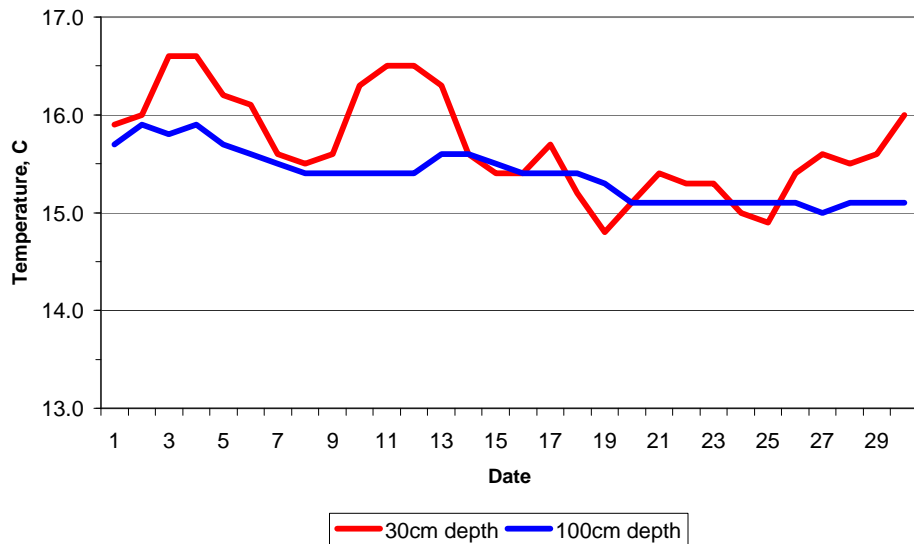
09GMT observations  
Temp temperature (degC) RH relative humidity (%)  
E state of ground (00 dry, 10 moist, 20 wet, 90 cracked) SS snow depth (cm)  
Press air pressure (mb)

24 hour readings  
Max maximum temperature (degC) beginning 09GMT Min minimum temperature (degC) ending 09GMT  
Gmin grass minimum temperature (degC) ending 09GMT Rain precipitation beginning 09GMT  
Sun sunshine (hours) sunrise-sunset Rain hrs hours of rainfall (>0.1mm/h) 09-09GMT  
Fr. Hrs hours of air frost (00-24GMT) Pch Evap Piche evaporation (ml) beginning 09GMT

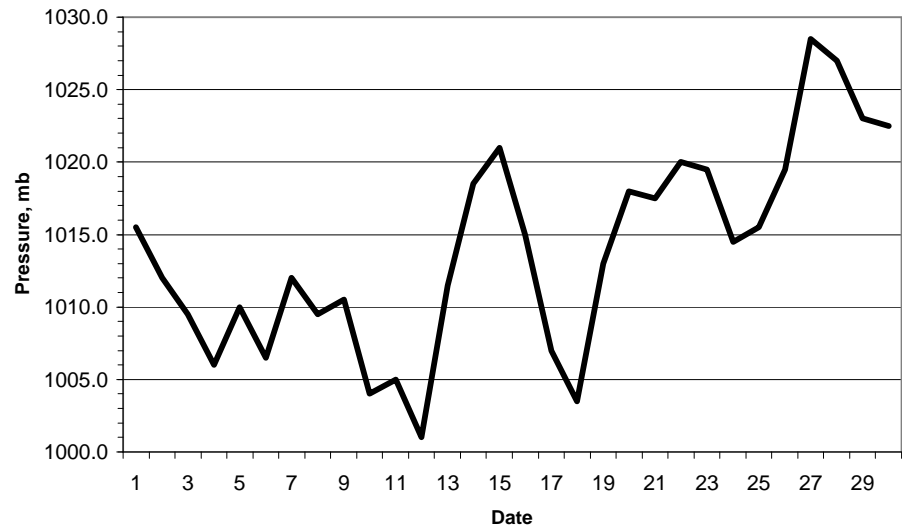
Days with  
S snow(5) or sleet(1) falling L 50% snow cover at 09GMT H hail or ice pellets  
T thunder heard G gale F fog at 09GMT

This information (and data for earlier months) is also available at <http://www.met.rdg.a.uk/~brugge>

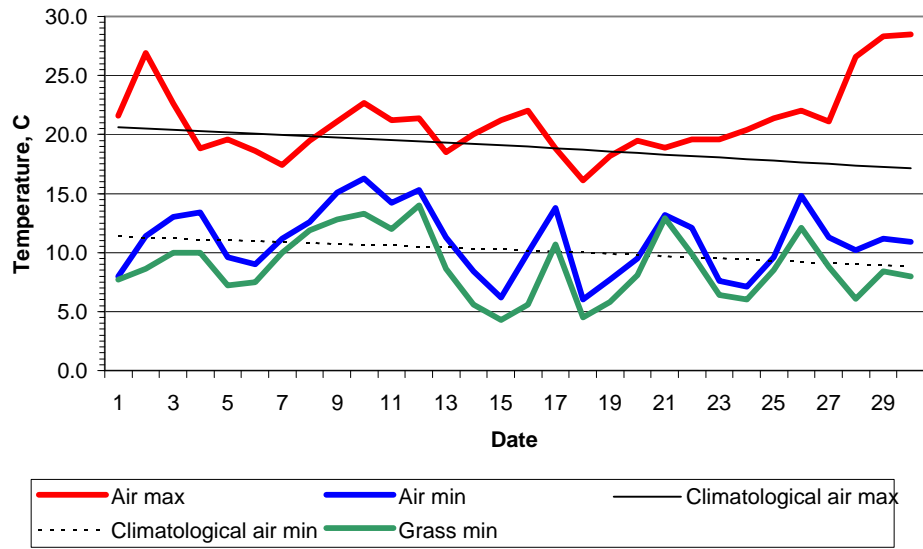
Daily soil temperatures, 0700GMT



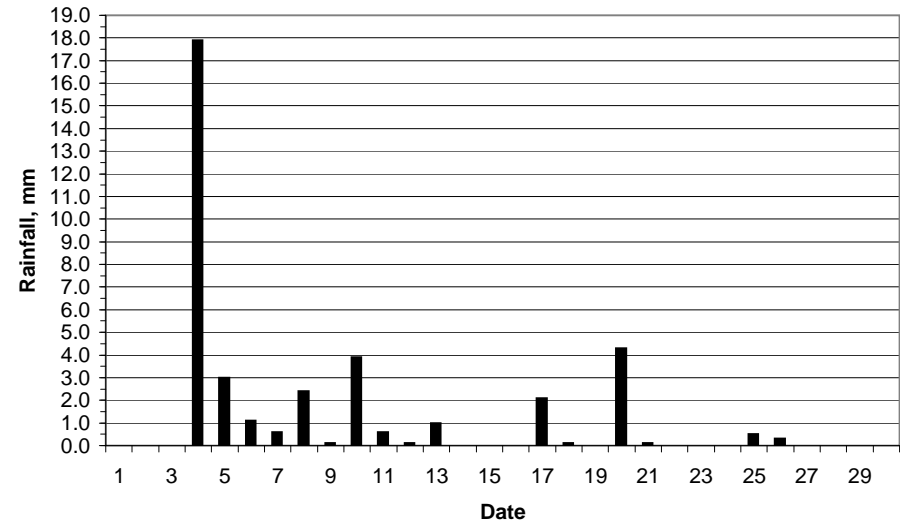
Mean sea level pressure, 0900GMT



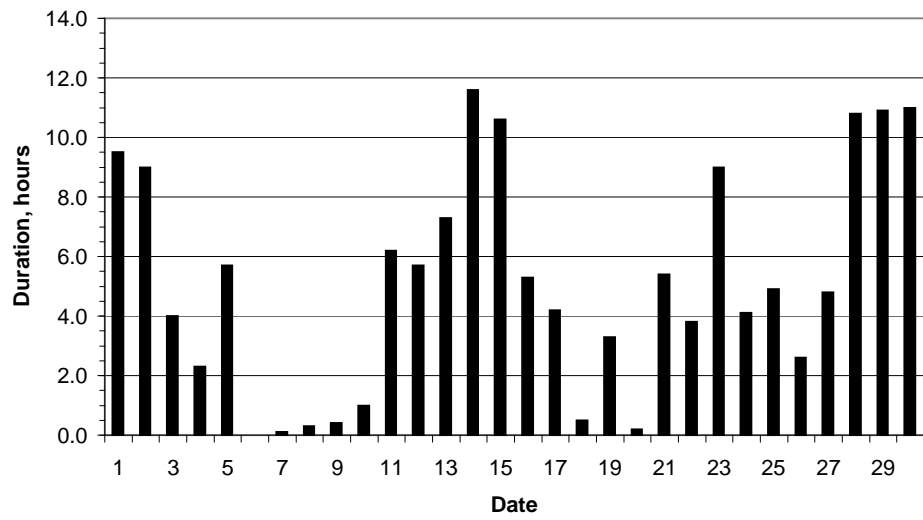
### Daily temperature extremes



### Daily rainfall



### Daily sunshine



### Daily evaporation

