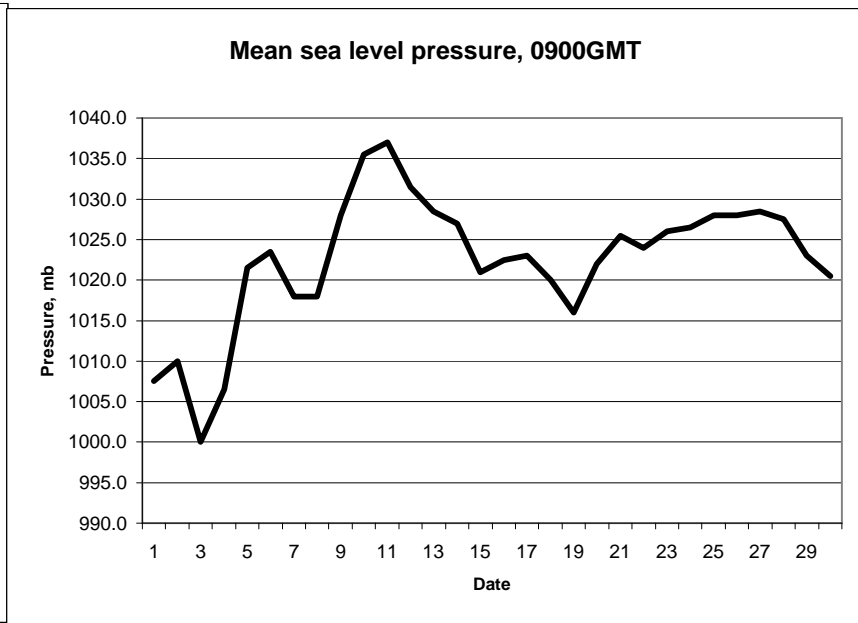
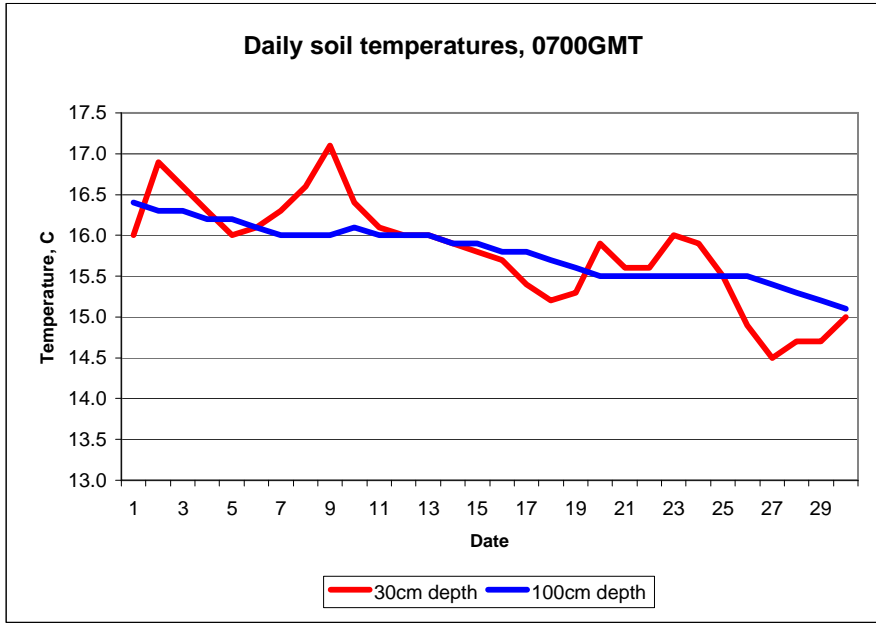


MAIDENHEAD METEOROLOGICAL OBSERVATIONS FOR SEPTEMBER 2009

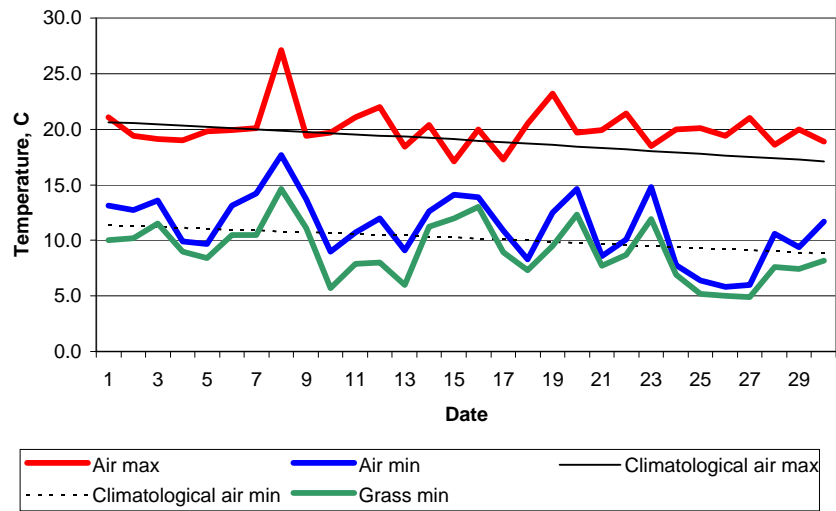
DD	N	dd	ff	ww	VV	0900GMT		Temperature			Soil temperatures (depth in cm)						E	SS	Rain	Sun	S	L	H	T	G	F	Press	Rain hrs	Fr. hrs	Pch Evap			
						Temp	RH	Max	Min	Gmin	5	10	20	30	50	100																	
01	1	22	02	02	97	18.9	62	21.1	13.1	10.0	15.0	15.6	16.6	16.0	17.0	16.4	00	0	0.2	9.0	0	0	0	0	0	0	1007.5	0.8	0.0	2.7	Number of days with 2009 normal Snow/sleet falling 0 0.0 50% snow cover 09GMT 0 0.0 Hail or ice pellets 0 0.2 Thunder 0 1.2 Gale 0 0.2 Fog at 09GMT 0 0.4 Air frost 0 0.0 Ground frost 0 0.3 0.2mm precipitation 4 12.5 1.0mm precipitation 2 9.1 5.0mm precipitation 1 3.7 No sunshine 2 2.9 Remaining rather dry after the 2nd; the band of rain that brought some deluges to the south only gave 2.2mm here. Very warm on the 8th and a warm month overall - soils temperatures at depth changed little during the month and daytime air temperatures varied only a little.		
02	8	18	02	03	97	15.9	83	19.4	12.7	10.2	15.5	15.6	16.5	16.9	17.1	16.3	00	0	10.4	0.2	0	0	0	0	0	1010.0	5.9	0.0	1.6				
03	2	22	13	02	97	17.1	61	19.1	13.6	11.5	14.5	14.6	15.5	16.6	16.9	16.3	10	0	0.0	7.7	0	0	0	0	0	1000.0	0.0	0.0	2.2				
04	2	29	13	02	97	17.0	62	19.0	9.9	9.0	13.8	14.0	15.3	16.3	16.4	16.2	10	0	0.0	9.7	0	0	0	0	0	1006.5	0.0	0.0	2.2				
05	0	18	09	02	97	17.4	63	19.8	9.7	8.4	12.9	13.8	15.2	16.0	16.2	16.2	10	0	0.0	6.5	0	0	0	0	0	1021.5	0.0	0.0	2.0				
06	8	22	05	03	97	15.8	63	19.9	13.1	10.5	14.9	15.0	15.4	16.1	16.2	16.1	10	0	tr	4.5	0	0	0	0	0	1023.5	0.0	0.0	1.9				
07	8	18	02	60	96	18.6	88	20.1	14.2	10.5	15.3	15.4	16.0	16.3	16.3	16.0	00	0	0.2	0.4	0	0	0	0	0	1018.0	0.5	0.0	0.9				
08	8	18	05	02	97	20.9	76	27.1	17.7	14.6	17.2	17.2	17.0	16.6	16.3	16.0	00	0	0.0	8.8	0	0	0	0	0	1018.0	0.0	0.0	2.6				
09	7	33	09	03	97	17.4	72	19.4	13.7	11.1	15.7	16.3	17.0	17.1	16.6	16.0	00	0	0.0	1.3	0	0	0	0	0	1028.0	0.0	0.0	1.9				
10	0	03	02	02	97	17.1	61	19.7	9.0	5.7	14.2	14.1	15.7	16.4	16.5	16.1	00	0	0.0	9.3	0	0	0	0	0	1035.5	0.0	0.0	2.2				
11	6	36	05	02	97	16.9	73	21.1	10.7	7.9	13.4	14.0	15.4	16.1	16.4	16.0	00	0	0.0	9.9	0	0	0	0	0	1037.0	0.0	0.0	2.2				
12	0	02	02	02	97	18.0	71	22.0	12.0	8.0	13.8	14.3	15.4	16.0	16.4	16.0	00	0	0.0	11.3	0	0	0	0	0	1031.5	0.0	0.0	1.8				
13	0	36	05	02	97	15.7	78	18.4	9.1	6.0	13.6	13.9	15.3	16.0	16.3	16.0	00	0	0.0	3.9	0	0	0	0	0	1028.5	0.0	0.0	2.2				
14	7	04	05	02	97	17.3	69	20.4	12.6	11.2	14.4	14.7	15.6	15.9	16.2	15.9	00	0	tr	7.2	0	0	0	0	0	1027.0	0.0	0.0	2.4				
15	7	03	09	03	97	16.3	77	17.1	14.1	12.0	15.0	15.0	15.6	15.8	16.1	15.9	00	0	2.2	0.0	0	0	0	0	0	1021.0	6.0	0.0	1.2				
16	5	36	09	01	97	17.1	68	20.0	13.9	13.0	14.5	14.8	15.5	15.7	15.9	15.8	00	0	0.0	8.8	0	0	0	0	0	1022.5	0.0	0.0	2.4				
17	6	03	02	02	97	15.7	63	17.3	10.9	8.9	12.8	13.4	14.7	15.4	15.9	15.8	00	0	0.0	1.0	0	0	0	0	0	1023.0	0.0	0.0	2.7				
18	2	04	02	02	97	17.3	66	20.5	8.3	7.3	12.6	13.2	14.5	15.2	15.8	15.7	00	0	0.0	5.7	0	0	0	0	0	1020.0	0.0	0.0	1.3				
19	7	32	02	03	97	18.0	87	23.2	12.5	9.5	13.9	14.3	15.0	15.3	15.4	15.6	00	0	0.0	3.1	0	0	0	0	0	1016.0	0.0	0.0	1.8				
20	8	00	00	02	97	15.6	79	19.7	14.6	12.3	15.6	15.6	16.0	15.9	15.7	15.5	00	0	0.0	1.9	0	0	0	0	0	1022.0	0.0	0.0	1.4				
21	7	22	02	02	97	13.9	70	19.9	8.6	7.7	13.3	13.8	15.0	15.6	15.9	15.5	00	0	0.0	4.1	0	0	0	0	0	1025.5	0.0	0.0	1.9				
22	7	24	02	02	97	16.2	83	21.4	10.1	8.7	13.9	14.1	15.1	15.6	15.8	15.5	00	0	0.0	3.6	0	0	0	0	0	1024.0	0.0	0.0	1.8				
23	8	22	02	02	96	16.9	71	18.5	14.8	11.9	15.9	15.8	16.2	16.0	15.9	15.5	10	0	0.0	0.0	0	0	0	0	0	1026.0	0.0	0.0	0.7				
24	1	25	02	02	96	16.5	77	20.0	7.8	6.9	12.9	13.9	15.5	15.9	15.8	15.5	00	0	0.0	10.0	0	0	0	0	0	1026.5	0.0	0.0	2.1				
25	1	27	02	02	97	15.7	71	20.1	6.4	5.2	11.7	14.4	15.4	15.5	15.9	15.5	00	0	0.0	11.0	0	0	0	0	0	1028.0	0.0	0.0	2.1				
26	7	36	02	03	97	11.1	87	19.4	5.8	5.0	11.6	12.4	13.9	14.9	15.5	15.5	00	0	0.0	8.3	0	0	0	0	0	1028.0	0.0	0.0	1.8				
27	6	27	02	02	96	15.1	79	21.0	6.0	4.9	11.2	11.8	13.4	14.5	15.2	15.4	00	0	0.0	8.9	0	0	0	0	0	1028.5	0.0	0.0	2.3				
28	8	23	02	02	97	14.8	78	18.6	10.6	7.6	12.8	13.2	13.9	14.7	15.3	15.3	00	0	0.0	0.2	0	0	0	0	0	1027.5	0.0	0.0	1.4				
29	6	29	02	03	97	14.0	82	20.0	9.4	7.4	12.2	12.8	14.0	14.7	15.3	15.2	00	0	0.0	5.3	0	0	0	0	0	1023.0	0.0	0.0	1.3				
30	8	29	02	02	97	15.1	93	18.9	11.7	8.2	14.3	14.3	14.8	15.0	15.3	15.1	00	0	0.1	0.7	0	0	0	0	0	1020.5	0.2	0.0	1.0				
Monthly means						16.4	74	20.1	11.2	9.0	13.9	14.4	15.3	15.8	16.1	15.8											1022.5						
Monthly totals																					13.1	162.3						13.4	0.0	56.0			
Highest values																																	
Lowest values						20.9		27.1	17.7	14.6	17.2	17.2	17.0	17.1	17.1	16.4				10.4	11.3								6.0	0.0	2.7		
1971-2000 monthly climatological averages						11.1	61	17.1	5.8	4.9	11.2	11.8	13.4	14.5	15.2	15.1																	
						83	19.1	10.3	7.9	13.3	13.9	15.0	15.6	15.5	15.4				60.3	131.7								1016.4	41.2	0.0	46.2		

Key
 DD: date
 07GMT observations
 N cloud cover (oktas, 9=obscured) dd wind direction (degrees/10)
 ff wind speed (knots)
 ww present weather code
 1 cloud decreasing 20 recent drizzle
 2 sky not changing 44 fog
 3 cloud increasing 63 continuous moderate rain
 10 mist 91 light rain after thunderstorm
 VV visibility (00-50 metres/100, 94 very poor, 95 poor, 96 moderate, 97 good)
 Soil temperatures are for 0700GMT beneath bare soil (5, 10, 20cm) or grass (30, 50, 100cm)
 09GMT observations
 Temp temperature (degC) RH relative humidity (%)
 E state of ground (00 dry, 10 moist, 20 wet, 90 cracked) SS snow depth (cm)
 Press air pressure (mb)
 24 hour readings
 Max maximum temperature (degC) beginning 09GMT Min minimum temperature (degC) ending 09GMT
 Gmin grass minimum temperature (degC) ending 09GMT Rain precipitation beginning 09GMT
 Sun sunshine (hours) sunrise-sunset Rain hrs hours of rainfall (>0.1mm/h) 09-09GMT
 Fr. Hrs hours of air frost (00-24GMT) Pch Evap Piche evaporation (ml) beginning 09GMT
 Days with
 S snow(5) or sleet(1) falling L 50% snow cover at 09GMT H hail or ice pellets
 T thunder heard G gale F fog at 09GMT

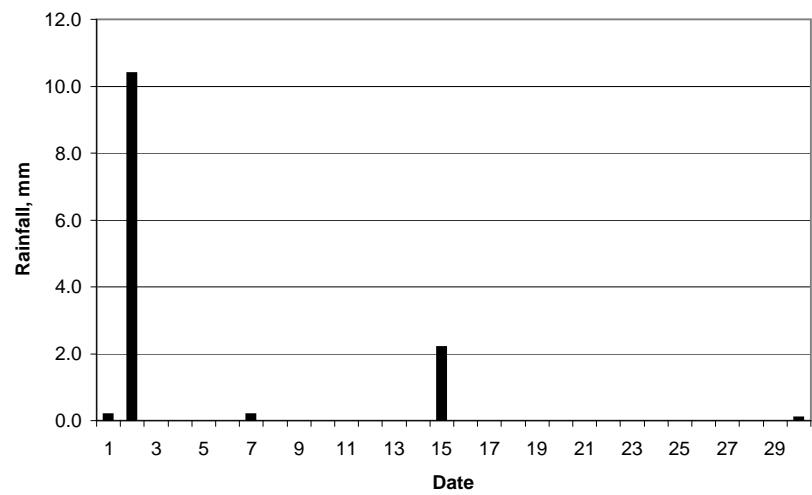
This information (and data for earlier months) is also available at <http://www.met.rdg.a.uk/~brugge>



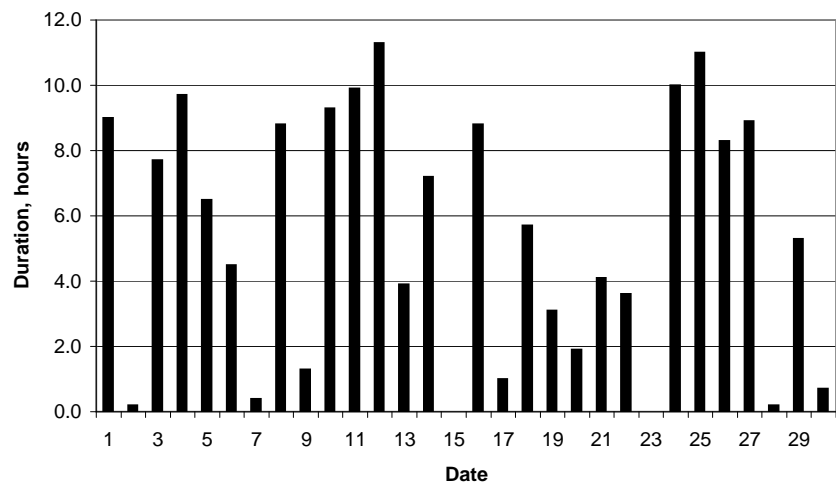
Daily temperature extremes



Daily rainfall



Daily sunshine



Daily evaporation

