

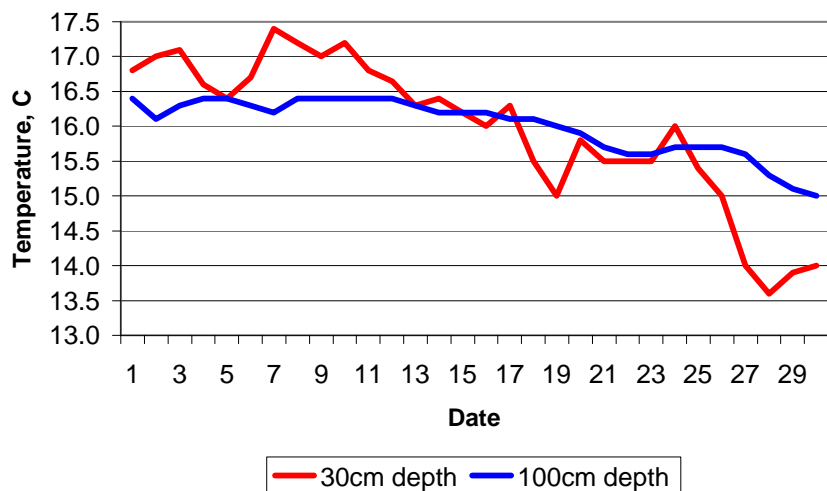
MAIDENHEAD METEOROLOGICAL OBSERVATIONS FOR SEPTEMBER 2007

							0900GMT	Temperature				Soil temperatures (depth in cm)																						Rain	Fr.	Pch		
DD	N	dd	ff	ww	VV	Temp	RH	Max	Min	Gmin	5	10	20	30	50	100	E	SS	Rain	Sun	S	L	H	T	G	F	Press	hrs	hrs	Evap								
01	7	27	02	02	07	16.3	92	20.9	14.6	11.2	16.1	16.3	16.7	16.8	16.6	16.4	00	0	0.0	0.8	0	0	0	0	0	0	0	1022.5	0.0	0.0	1.1	Number of						
02	7	28	02	02	07	19.5	76	21.1	12.0	9.9	15.6	15.9	16.6	17.0	16.6	16.1	00	0	0.3	4.3	0	0	0	0	0	0	1019.5	0.4	0.0	0.9	days with							
03	7	34	02	02	07	14.7	74	19.0	13.2	11.6	15.6	16.2	17.0	17.1	16.7	16.3	00	0	0.0	7.2	0	0	0	0	0	0	1019.5	0.0	0.0	1.9	2007	normal						
04	7	22	02	03	07	14.5	78	20.1	8.0	6.2	13.3	14.1	15.8	16.6	16.7	16.4	00	0	0.0	10.0	0	0	0	0	0	0	1029.5	0.0	0.0	1.8	Snow/sleet falling							
05	2	27	02	02	07	17.8	84	23.4	12.4	9.8	14.8	15.2	16.0	16.4	16.4	16.4	00	0	0.0	3.1	0	0	0	0	0	0	1030.5	0.0	0.0	1.2	0	0.0						
06	2	21	02	02	07	19.8	85	24.3	11.9	10.2	14.9	15.6	16.5	16.7	16.4	16.3	00	0	0.0	3.0	0	0	0	0	0	0	1032.0	0.0	0.0	1.4	50% snow cover 09GMT							
07	0	32	02	01	07	18.6	94	23.4	15.4	13.2	16.8	17.2	17.6	17.4	16.7	16.2	00	0	0.0	7.3	0	0	0	0	0	0	1032.0	0.0	0.0	1.3	0	0.0						
08	4	28	05	02	07	16.2	87	20.0	10.6	8.6	15.2	15.6	16.9	17.2	17.1	16.4	00	0	0.0	2.7	0	0	0	0	0	0	1029.0	0.0	0.0	1.1	Hail or ice pellets							
09	7	26	05	02	06	16.9	91	23.7	11.3	9.3	15.5	15.6	16.6	17.0	16.9	16.4	00	0	0.0	6.7	0	0	0	0	0	0	1026.5	0.0	0.0	1.5	0	0.2						
10	7	29	02	02	07	17.7	75	22.1	14.3	12.5	16.1	16.4	17.0	17.2	16.9	16.4	00	0	0.0	7.2	0	0	0	0	0	0	1020.0	0.0	0.0	2.4	Thunder							
11	3	27	02	02	07	16.0	70	21.0	8.2	6.9	13.8	14.7	16.0	16.8	16.8	16.4	00	0	0.0	11.2	0	0	0	0	0	0	1026.5	0.0	0.0	2.1	0	1.2						
12	7	23	02	10	04	17.0	83	22.0	7.9	6.2	13.3	14.0	15.5	16.7	16.7	16.4	90	0	0.0	5.2	0	0	0	0	0	0	1029.0	0.0	0.0	1.2	Gale							
13	1	36	02	02	07	17.7	90	22.9	8.6	7.0	13.4	14.3	15.6	16.3	16.6	16.3	90	0	0.0	10.1	0	0	0	0	0	0	1027.5	0.0	0.0	1.5	0	0.2						
14	6	02	02	03	06	15.8	88	21.4	10.6	8.2	14.3	14.9	15.9	16.4	16.6	16.2	90	0	0.0	4.3	0	0	0	0	0	0	1020.0	0.0	0.0	1.7	Fog at 09GMT							
15	4	00	00	02	06	15.8	74	21.6	6.9	5.2	12.8	13.6	15.5	16.2	16.5	16.2	90	0	0.0	10.5	0	0	0	0	0	0	1027.0	0.0	0.0	1.5	0	0.4						
16	1	00	00	02	07	16.1	89	21.7	8.4	6.1	13.4	13.8	15.2	16.0	16.3	16.2	90	0	0.0	7.9	0	0	0	0	0	0	1016.0	0.0	0.0	2.0	Air frost							
17	7	27	02	02	07	14.1	89	16.5	12.0	10.0	14.8	15.4	16.1	16.3	16.3	16.1	90	0	0.0	9.3	0	0	0	0	0	0	1011.0	0.0	0.0	1.7	0	0.0						
18	1	33	13	02	07	12.3	62	16.6	6.6	4.5	11.7	13.8	14.6	15.5	16.1	16.1	90	0	0.3	10.5	0	0	0	0	0	0	1025.0	0.7	0.0	2.0	Ground frost							
19	8	22	02	20	07	12.3	90	18.0	9.2	5.1	12.8	13.0	14.2	15.0	15.7	16.0	90	0	0.6	9.1	0	0	0	0	0	0	1022.0	1.0	0.0	1.3	0	0.3						
20	6	23	05	02	07	17.0	81	20.1	12.3	9.0	14.4	14.5	14.4	15.8	15.4	15.9	10	0	1.2	2.2	0	0	0	0	0	0	1018.5	1.0	0.0	1.4	0.2mm precipitation							
21	6	22	05	02	07	16.7	83	19.2	14.8	11.9	14.8	15.0	15.5	15.5	15.6	15.7	10	0	0.0	0.9	0	0	0	0	0	0	1018.0	0.0	0.0	1.2	8	12.5						
22	8	00	00	02	06	14.8	96	22.5	12.5	9.9	14.5	14.8	15.4	15.5	15.7	15.6	00	0	0.0	3.0	0	0	0	0	0	0	1022.0	0.0	0.0	1.1	1.0mm precipitation							
23	7	23	02	02	07	16.5	89	21.7	11.1	8.2	14.3	14.4	15.3	15.5	15.8	15.6	00	0	11.6	3.8	0	0	0	0	0	0	1019.0	6.0	0.0	1.6	5	9.1						
24	0	20	02	63	04	13.5	96	18.2	13.0	13.0	15.2	15.4	16.1	16.0	15.8	15.7	10	0	0.0	7.8	0	0	0	0	0	0	1007.0	0.0	0.0	1.7	5.0mm precipitation							
25	1	27	02	02	06	14.6	78	18.4	8.5	6.4	12.2	12.9	14.4	15.4	15.7	15.7	10	0	10.1	6.4	0	0	0	0	0	0	1013.5	3.7	0.0	0.8	3	3.7						
26	7	32	05	02	07	11.3	75	13.1	8.1	6.8	12.2	12.7	14.2	15.0	15.4	15.7	10	0	0.0	6.5	0	0	0	0	0	0	1022.5	0.0	0.0	1.5	No sunshine							
27	1	35	09	02	07	11.1	69	14.0	6.4	4.5	10.1	10.6	12.6	14.0	14.9	15.6	10	0	0.1	5.1	0	0	0	0	0	0	1023.0	0.1	0.0	1.0	0	2.9						
28	8	36	09	02	07	14.0	76	14.4	11.0	5.2	11.7	11.9	13.5	13.6	14.4	15.3	10	0	7.3	0.5	0	0	0	0	0	0	1015.5	8.8	0.0	0.7	A very dry month with only							
29	8	36	02	02	06	13.5	97	16.9	12.3	11.2	13.3	13.4	13.5	13.9	14.4	15.1	10	0	tr	0.5	0	0	0	0	0	0	1015.0	0.0	0.0	0.7	2.4mm of rain until the 23rd.							
30	7	02	02	02	06	10.4	86	17.5	7.0	5.0	11.5	12.8	13.1	14.0	14.3	15.0	10	0	2.4	2.0	0	0	0	0	0	0	1023.0	1.5	0.0	1.4	This was due to the anticyclonic nature of the month - which also resulted in more sunshine than usual. Temperatures were slightly above average overall.							
Monthly means						15.4	83	19.9	10.6	8.4	13.9	14.5	15.4	16.0	16.1	16.0											1022.1											
Monthly totals																				33.9	169.1							23.2	0.0	42.7								
Highest values						19.8		24.3	15.4	13.2	16.8	17.2	17.6	17.4	17.1	16.4				11.6	11.2							8.8	0.0	2.4								
Lowest values						10.4	62	13.1	6.4	4.5	10.1	10.6	12.6	13.6	14.3	15.0																						
1971-2000 monthly climatological averages						83	19.1	10.3	7.9	13.3	13.9	15.0	15.6	15.5	15.4						60.3	131.7							1016.4	41.2	0.0	46.2						

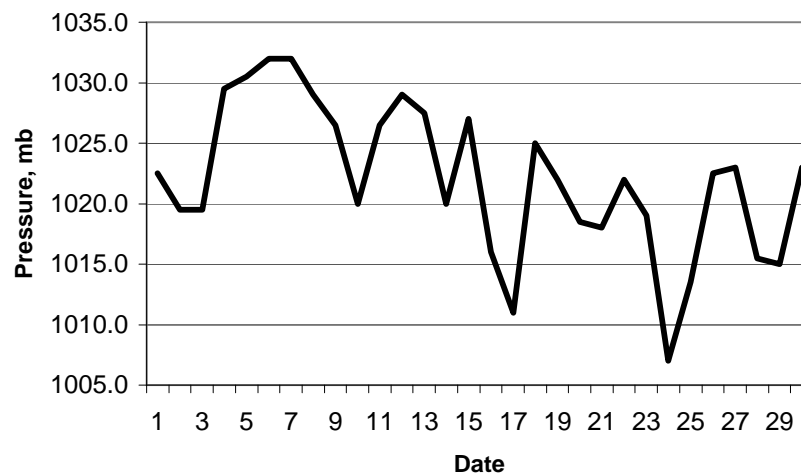
Key
 DD: date
 07GMT observations
 N cloud cover (oktas, 9=obscured) dd wind direction (degrees/10)
 ff wind speed (knots)
 ww present weather code
 1 cloud decreasing 20 recent drizzle
 2 sky not changing 44 fog
 3 cloud increasing 63 continuous moderate rain
 10 mist 91 light rain after thunderstorm
 VV visibility (00-50 metres/100, 94 very poor, 95 poor, 96 moderate, 97 good)
 Soil temperatures are for 0700GMT beneath bare soil (5, 10, 20cm) or grass (30, 50, 100cm)
 09GMT observations
 Temp temperature (degC) RH relative humidity (%)
 E state of ground (00 dry, 10 moist, 20 wet, 90 cracked) SS snow depth (cm)
 Press air pressure (mb)
 24 hour readings
 Max maximum temperature (degC) beginning 09GMT Min minimum temperature (degC) ending 09GMT
 Gmin grass minimum temperature (degC) ending 09GMT Rain precipitation beginning 09GMT
 Sun sunshine (hours) sunrise-sunset Rain hrs hours of rainfall (>0.1mm/h) 09-09GMT
 Fr. Hrs hours of air frost (00-24GMT) Pch Evap Piche evaporation (ml) beginning 09GMT
 Days with
 S snow(5) or sleet(1) falling L 50% snow cover at 09GMT H hail or ice pellets
 T thunder heard G gale F fog at 09GMT

This information (and data for earlier months) is also available at <http://www.met.rdg.a.uk/~brugge>

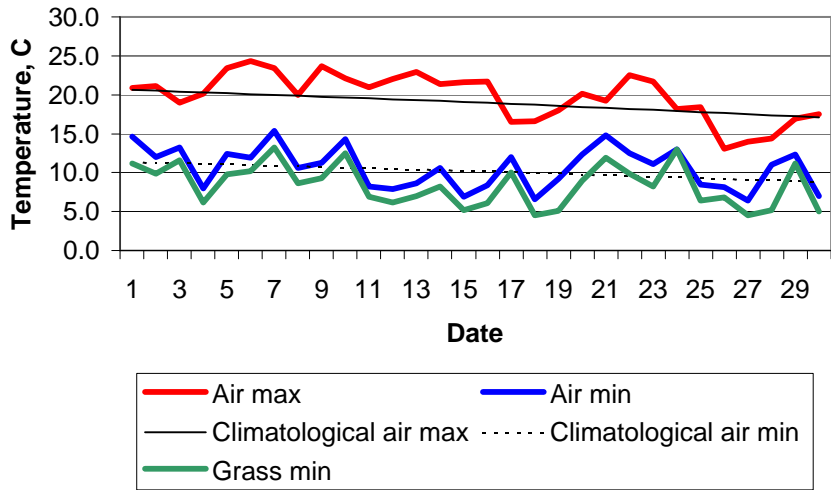
Daily soil temperatures, 0700GMT



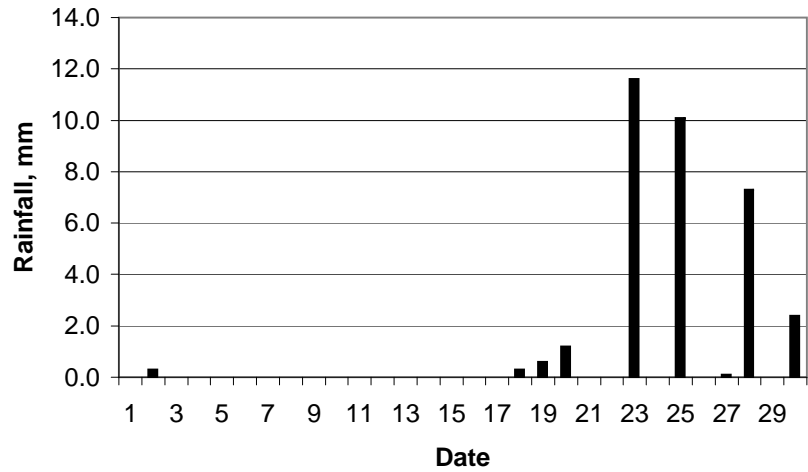
Mean sea level pressure, 0900GMT



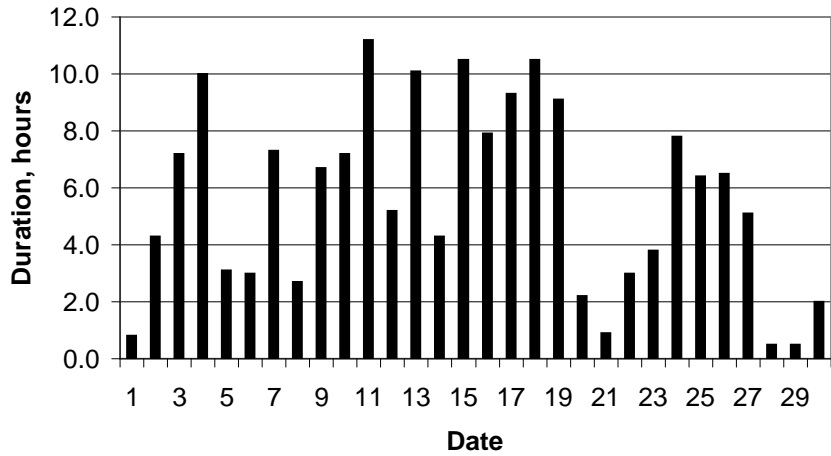
Daily temperature extremes



Daily rainfall



Daily sunshine



Daily evaporation

