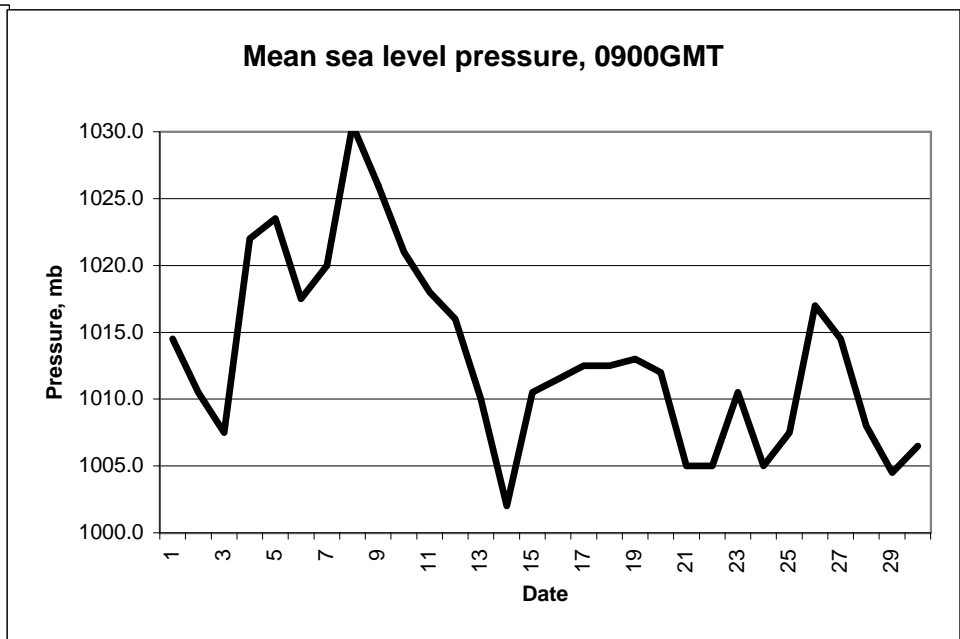
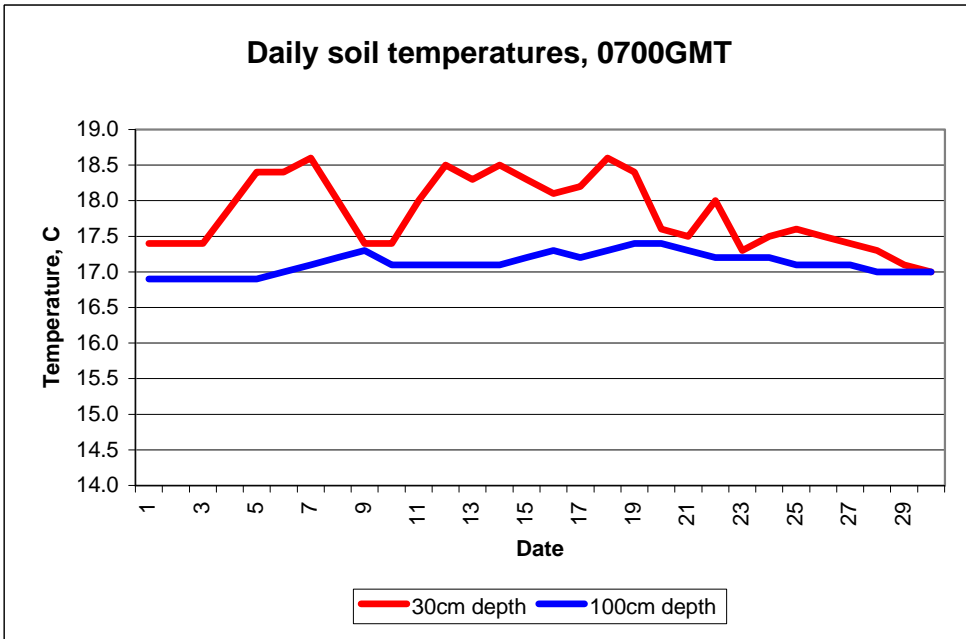


MAIDENHEAD METEOROLOGICAL OBSERVATIONS FOR SEPTEMBER 2006

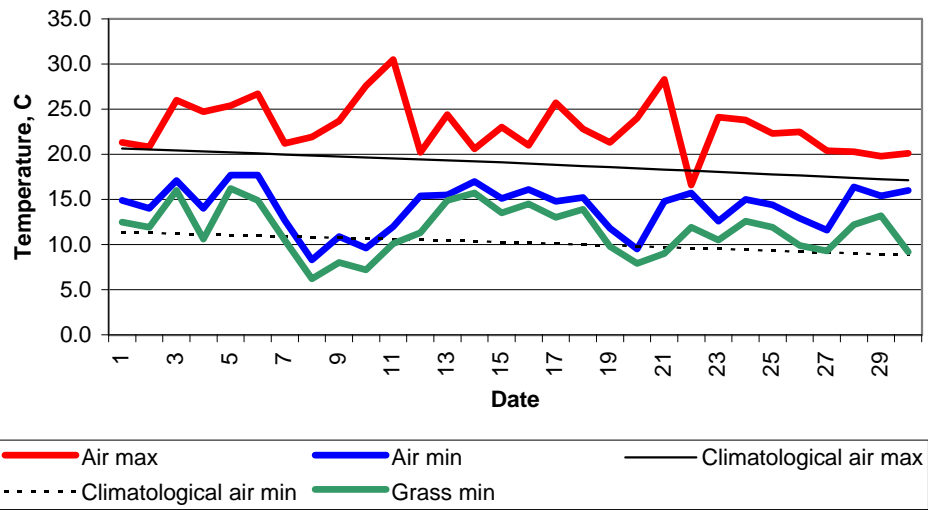
DD	N	dd	ff	ww	VV	0900GMT		Temperature			Soil temperatures (depth in cm)						E	SS	Rain	Sun	S	L	H	T	G	F	Press	Rain hrs	Fr. hrs	Pch Evap		
						Temp	RH	Max	Min	Gmin	5	10	20	30	50	100																
01	8	18	02	02	97	17.2	82	21.3	14.9	12.5	16.2	16.6	17.0	17.4	17.2	16.9	00	0	0.9	2.0	0	0	0	0	0	0	0	1014.5	1.2	0.0	1.5	Number of days with 2006 normal Snow/sleet falling 0 0.0 50% snow cover 09GMT 0 0.0 Hail or ice pellets 0 0.2 Thunder 4 1.2 Gale 0 0.2 Fog at 09GMT 0 0.4 Air frost 0 0.0 Ground frost 0 0.3 0.2mm precipitation 15 12.5 1.0mm precipitation 9 9.1 5.0mm precipitation 4 3.7 No sunshine 0 2.9 The warmest September since before 1953 and much warmer than August 2006. The first time that 30C has been recorded in September since before 1953. The wettest September since 1998 while the 23rd was the wettest September day since 1995; most of this 26.4mm fell during one hour just after dawn on the 24th.
02	8	28	05	02	97	17.1	89	20.8	14.0	11.9	16.3	16.6	17.1	17.4	17.3	16.9	00	0	0.0	0.1	0	0	0	0	0	0	1010.5	0.0	0.0	1.2		
03	8	21	09	02	97	20.5	92	26.0	17.1	16.0	17.9	17.8	17.5	17.4	17.3	16.9	10	0	0.0	8.9	0	0	0	0	0	0	1007.5	0.0	0.0	2.1		
04	4	22	02	02	97	17.7	85	24.7	14.0	10.6	16.2	16.6	17.5	17.9	17.5	16.9	00	0	0.0	5.8	0	0	0	0	0	0	1022.0	0.0	0.0	1.9		
05	7	22	02	02	97	19.1	89	25.4	17.7	16.2	18.3	18.4	18.4	18.4	17.7	16.9	00	0	0.0	3.6	0	0	0	0	0	0	1023.5	0.0	0.0	1.8		
06	2	21	02	02	97	20.8	75	26.7	17.7	14.9	18.1	18.3	18.5	18.4	18.1	17.0	00	0	tr	8.5	0	0	0	0	0	0	1017.5	0.0	0.0	2.9		
07	1	33	05	02	97	15.7	76	21.2	12.7	10.5	16.4	17.2	18.5	18.6	18.2	17.1	00	0	0.0	11.8	0	0	0	0	0	0	1020.0	0.0	0.0	2.7		
08	0	05	02	02	97	15.1	73	21.9	8.3	6.2	13.8	15.0	17.0	18.0	18.3	17.2	00	0	0.0	11.9	0	0	0	0	0	0	1030.5	0.0	0.0	3.0		
09	7	09	09	03	97	17.2	68	23.7	10.9	8.0	14.4	14.9	16.3	17.4	17.8	17.3	00	0	0.0	7.8	0	0	0	0	0	0	1026.0	0.0	0.0	3.0		
10	9	00	00	45	04	16.8	86	27.6	9.6	7.2	15.4	15.2	16.4	17.4	17.7	17.1	90	0	0.0	9.7	0	0	0	0	0	0	1021.0	0.0	0.0	2.9		
11	5	36	02	02	97	18.6	64	30.5	12.0	10.1	15.3	16.1	17.2	18.0	17.7	17.1	90	0	13.7	7.5	0	0	0	1	0	0	1018.0	1.4	0.0	3.7		
12	8	18	02	02	94	16.8	96	20.2	15.4	11.3	17.3	17.8	18.2	18.5	18.2	17.1	10	0	2.3	0.1	0	0	0	0	0	0	1016.0	2.5	0.0	0.6		
13	7	00	00	02	94	17.6	94	24.4	15.5	14.9	17.5	17.8	18.2	18.3	18.1	17.1	10	0	17.3	4.4	0	0	0	1	0	0	1010.0	5.5	0.0	1.3		
14	7	12	02	02	94	18.0	92	20.6	17.0	15.7	17.8	18.3	18.5	18.5	18.2	17.1	10	0	0.4	0.8	0	0	0	0	0	0	1002.0	0.8	0.0	0.8		
15	8	36	02	20	96	16.1	90	23.0	15.1	13.5	16.6	18.3	18.0	18.3	18.0	17.2	10	0	0.2	5.2	0	0	0	0	0	0	1010.5	0.3	0.0	1.9		
16	8	36	05	02	96	18.0	90	21.0	16.1	14.5	17.3	17.6	18.0	18.1	18.0	17.3	10	0	0.0	0.1	0	0	0	0	0	0	1011.5	0.0	0.0	1.2		
17	7	27	02	02	97	19.3	70	25.7	14.8	13.0	17.0	17.6	18.0	18.2	18.0	17.2	10	0	0.2	8.0	0	0	0	0	0	0	1012.5	0.2	0.0	2.0		
18	7	21	02	02	97	18.8	73	22.8	15.2	13.9	17.2	17.8	18.5	18.6	18.2	17.3	00	0	0.1	6.0	0	0	0	0	0	0	1012.5	0.2	0.0	1.1		
19	3	22	02	02	97	15.1	77	21.3	11.8	9.8	15.1	16.2	17.8	18.4	18.3	17.4	10	0	0.0	8.7	0	0	0	0	0	0	1013.0	0.0	0.0	2.8		
20	6	15	02	02	97	15.8	87	24.0	9.5	7.9	13.8	14.9	16.6	17.6	17.9	17.4	00	0	0.0	5.9	0	0	0	0	0	0	1012.0	0.0	0.0	2.2		
21	0	18	02	02	97	21.2	70	28.3	14.8	9.0	15.5	16.1	17.0	17.5	17.7	17.3	00	0	3.5	9.2	0	0	0	0	0	0	1005.0	4.5	0.0	4.3		
22	8	16	02	21	97	16.0	93	16.6	15.7	11.9	17.3	17.8	18.1	18.0	17.8	17.2	10	0	20.9	0.3	0	0	0	0	0	0	1005.0	5.9	0.0	0.2		
23	9	14	02	45	02	16.1	98	24.1	12.6	10.5	15.6	15.6	17.2	17.3	17.7	17.2	10	0	26.4	7.9	0	0	0	0	0	0	1010.5	1.2	0.0	1.5		
24	8	13	05	91	95	17.8	92	23.8	15.0	12.6	16.6	16.7	16.6	17.5	17.6	17.2	10	0	0.0	7.3	0	0	0	1	0	0	1005.0	0.0	0.0	0.9		
25	8	03	02	02	97	16.7	95	22.3	14.4	11.9	16.1	16.5	17.2	17.6	17.6	17.1	10	0	2.3	2.0	0	0	0	1	0	0	1007.5	0.6	0.0	1.5		
26	2	18	02	03	96	17.5	86	22.5	12.9	9.9	14.7	15.6	16.5	17.5	17.6	17.1	10	0	0.0	9.9	0	0	0	0	0	0	1017.0	0.0	0.0	1.6		
27	7	12	02	03	95	17.0	80	20.4	11.6	9.3	17.8	18.9	16.6	17.4	17.5	17.1	10	0	0.7	2.4	0	0	0	0	0	0	1014.5	1.6	0.0	1.8		
28	7	20	02	01	96	17.7	93	20.3	16.4	12.2	16.6	16.9	17.2	17.3	17.3	17.0	10	0	3.8	0.5	0	0	0	0	0	0	1008.0	2.0	0.0	0.9		
29	7	14	05	02	96	17.5	95	19.8	15.4	13.2	16.7	16.9	17.2	17.1	17.2	17.0	10	0	4.4	1.6	0	0	0	0	0	0	1004.5	0.2	0.0	0.8		
30	7	18	05	21	96	16.4	91	20.1	16.0	9.2	14.7	15.4	16.4	17.0	17.1	17.0	10	0	0.8	6.7	0	0	0	0	0	0	1006.5	0.7	0.0	1.5		
Monthly means						17.5	85	23.0	14.1	11.6	16.3	16.8	17.4	17.8	17.8	17.1												1013.2				
Monthly totals																				97.9	164.6							28.8	0.0	55.6		
Highest values						21.2		30.5	17.7	16.2	18.3	18.9	18.5	18.6	18.3	17.4			26.4	11.9								5.9	0.0	4.3		
Lowest values						15.1	64	16.6	8.3	6.2	13.8	14.9	16.3	17.0	17.1	16.9																
1971-2000 monthly climatological averages							83	19.1	10.3	7.9	13.3	13.9	15.0	15.6	15.5	15.4			60.3	131.7									1016.4	41.2	0.0	46.2

Key
 DD: date
 07GMT observations
 N cloud cover (oktas, 9=obscured) dd wind direction (degrees/10)
 ff wind speed (knots)
 ww present weather code
 1 cloud decreasing 21 recent rain
 2 sky not changing 44 fog
 3 cloud increasing 45 fog, sky obscured
 20 recent drizzle 91 light rain after thunderstorm
 VV visibility (00-50 metres/100, 94 very poor, 95 poor, 96 moderate, 97 good)
 Soil temperatures are for 0700GMT beneath bare soil (5, 10, 20cm) or grass (30, 50, 100cm)
 09GMT observations
 Temp temperature (degC) RH relative humidity (%)
 E state of ground (00 dry, 10 moist, 20 wet, 90 cracked) SS snow depth (cm)
 Press air pressure (mb)
 24 hour readings
 Max maximum temperature (degC) beginning 09GMT Min minimum temperature (degC) ending 09GMT
 Gmin grass minimum temperature (degC) ending 09GMT Rain precipitation beginning 09GMT
 Sun sunshine (hours) sunrise-sunset Rain hrs hours of rainfall (>0.1mm/h) 09-09GMT
 Fr. Hrs hours of air frost (00-24GMT) Pch Evap Piche evaporation (ml) beginning 09GMT
 Days with
 S snow(5) or sleet(1) falling L 50% snow cover at 09GMT H hail or ice pellets
 T thunder heard G gale F fog at 09GMT

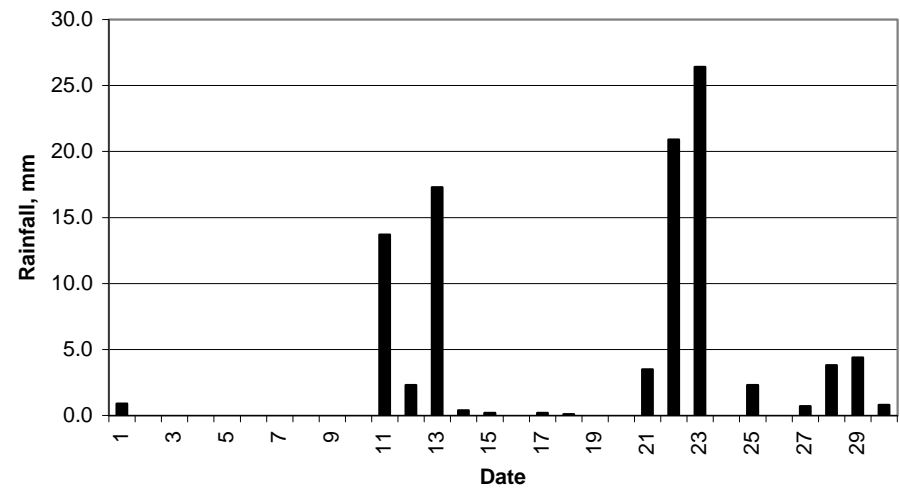
This information (and data for earlier months) is also available at <http://www.met.rdg.a.uk/~brugge>



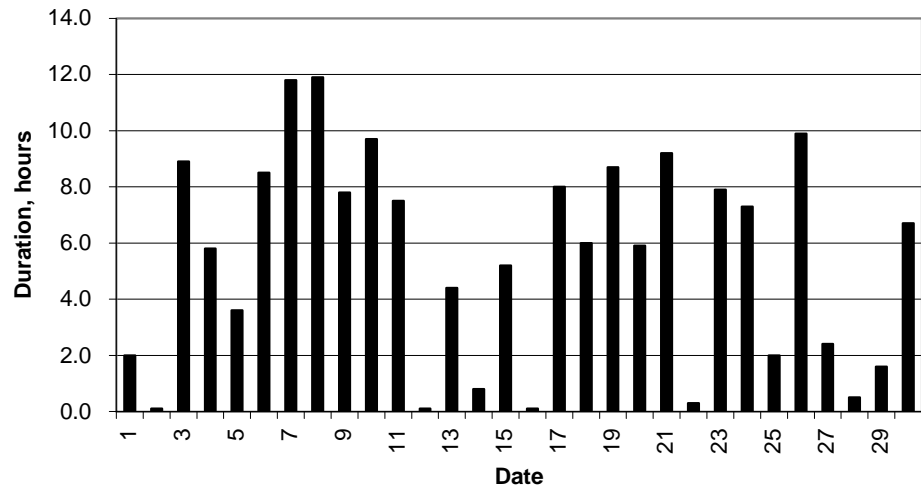
Daily temperature extremes



Daily rainfall



Daily sunshine



Daily evaporation

