



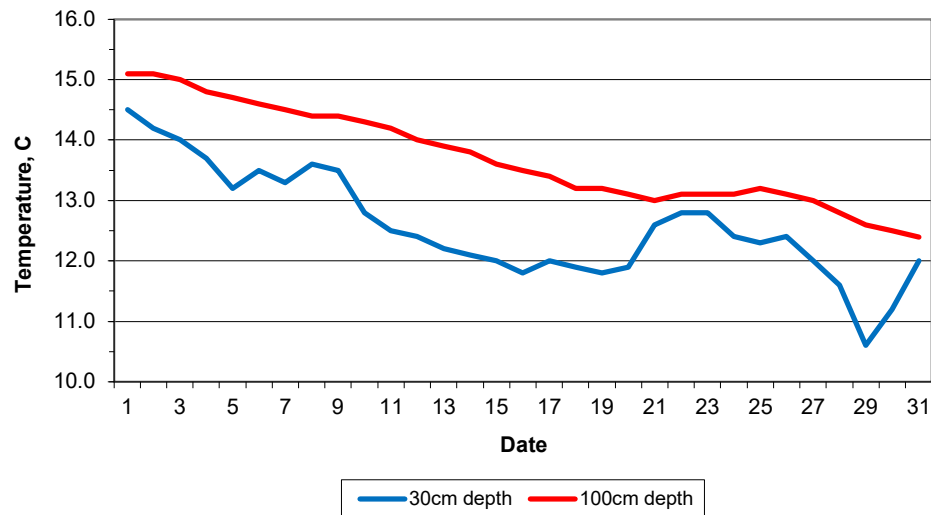
Key  
 DD: date  
 07GMT observations  
 N cloud cover (oktas, 9=obscured)      dd wind direction (degrees/10)  
 ff wind speed (knots)  
 ww present weather code  
 2 sky not changing      25 recent rain shower  
 3 cloud increasing      45 fog  
 10 mist      58 slight rain and drizzle  
 11 shallow fog      60 intermittent slight rain  
 21 recent rain      61 continuous slight rain  
 VV visibility (00-50 metres/100, 94 very poor, 95 poor, 96 moderate, 97 good)  
 Soil temperatures are for 0700GMT beneath bare soil (5, 10, 20cm) or grass (30, 50, 100cm)

09GMT observations  
 Temp temperature (degC)      RH relative humidity (%)  
 E state of ground (00 dry, 10 moist, 20 wet, 90 cracked)      SS snow depth (cm)  
 Press air pressure (mb)  
 24 hour readings  
 Max maximum temperature (degC) beginning 09GMT      Min minimum temperature (degC) ending 09GMT  
 Gmin grass minimum temperature (degC) ending 09GMT      Rain precipitation beginning 09GMT  
 Sun sunshine (hours) sunrise-sunset      Rain hrs hours of rainfall (>0.1mm/h) 09-09GMT  
 Fr. Hrs hours of air frost (00-24GMT)      Pch Evap Piche evaporation (ml) beginning 09GMT

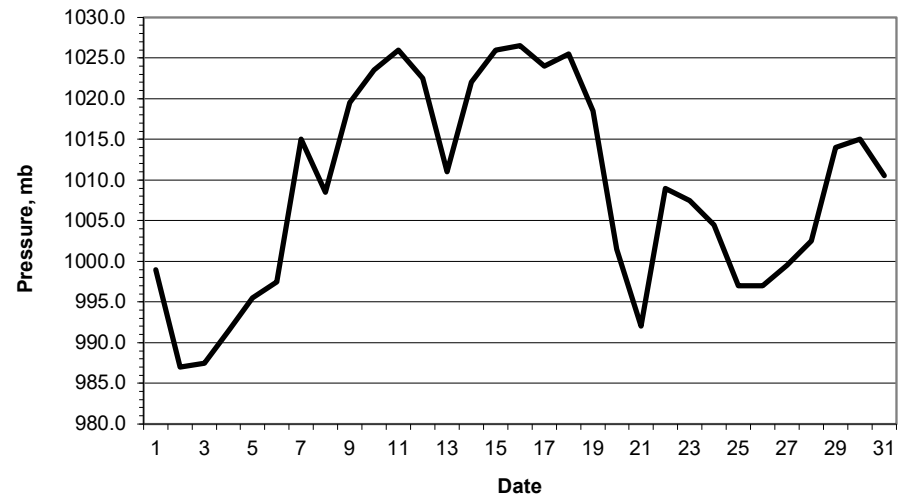
Days with  
 S snow(5) or sleet(1) falling      L 50% snow cover at 09GMT      H hail or ice pellets  
 T thunder heard      G gale      F fog at 09GMT

This information (and data for earlier months) is also available at <http://www.met.reading.ac.uk/~brugge>

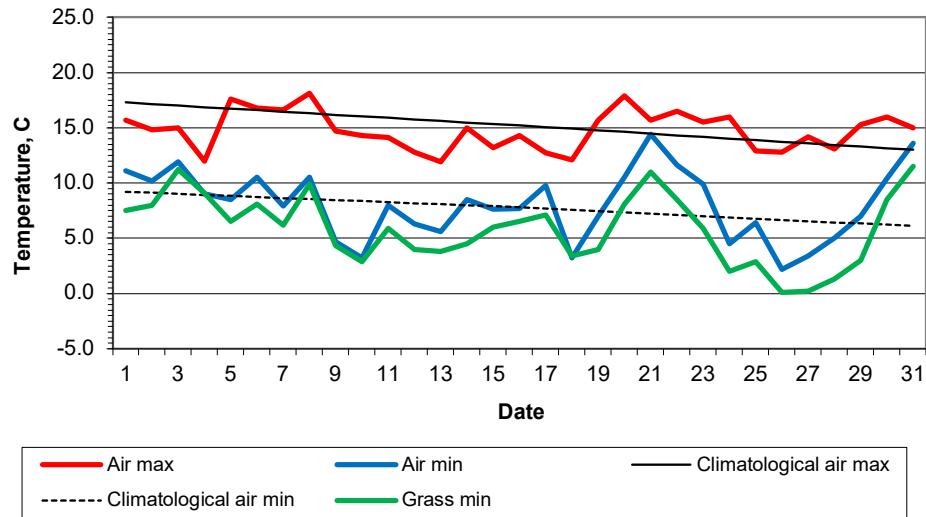
**Daily soil temperatures, 0700GMT**



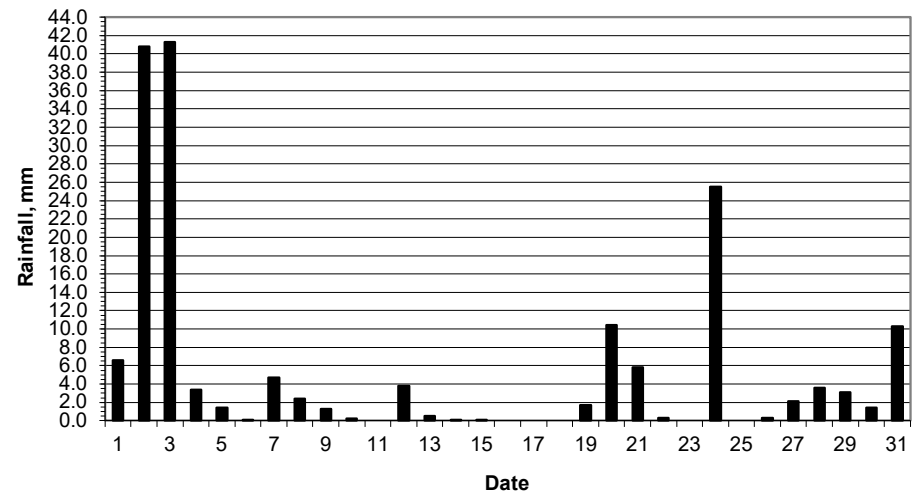
**Mean sea level pressure, 0900GMT**



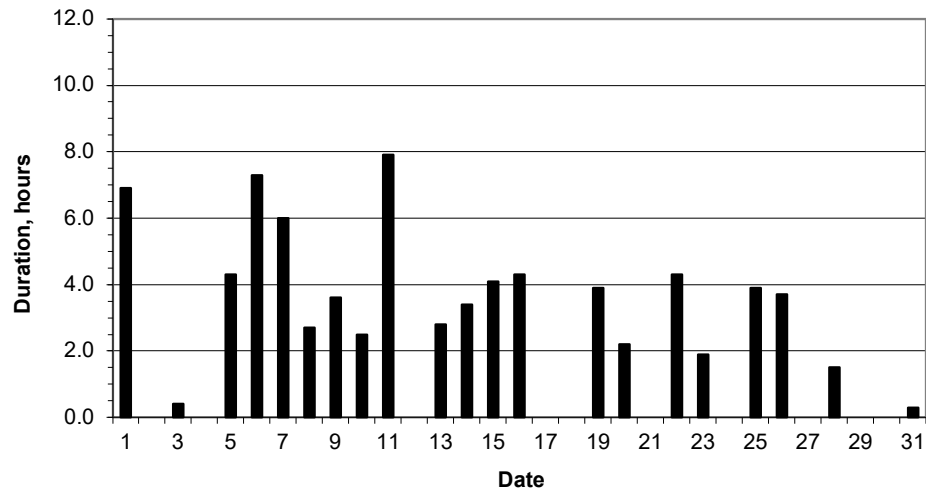
### Daily temperature extremes



### Daily rainfall



### Daily sunshine



### Daily evaporation

