

MAIDENHEAD METEOROLOGICAL OBSERVATIONS FOR OCTOBER 2016

DD	N	dd	ff	ww	VV	0900GMT Temperature				Soil temperatures (depth in cm)							E	SS	Rain	Sun	S	L	H	T	G	F	Press	Rain hrs	Fr. hrs	Pch Evap				
						Temp	RH	Max	Min	Gmin	5	10	20	30	50	100																		
01	0	00	00	41	09	10.4	99	15.4	6.3	4.6	11.1	11.8	13.5	15.1	15.4	16.0	10	0	7.1	2.4	0	0	0	0	0	0	0	1006.0	5.2	0.0	0.5	Number of days with  2016 normal  Snow/sleet falling 0 0.1 50% snow cover 09GMT 0 0.0 Hail or ice pellets 0 0.2 Thunder 0 0.6 Gale 0 0.1 Fog at 09GMT 2 0.8 Air frost 0 1.0 Ground frost 0 3.6 0.2mm precipitation 9 14.3 1.0mm precipitation 7 11.4 5.0mm precipitation 2 4.7 No sunshine 5 6.2 A dry month, with about half the rain falling on the 15th- 17th. Temperatures were close to normal overall, but the normal cooling trend observed in October was not so evident this year. A very anticyclonic one with pressure over 7 mb above normal. Only the October of 2007 had a higher mean pressure in the past 30 years.		
02	6	36	02	02	97	11.3	90	17.7	9.0	7.1	11.5	12.0	13.1	14.4	14.8	15.8	10	0	0.0	9.4	0	0	0	0	0	0	1016.0	0.0	0.0	1.1				
03	2	00	00	02	96	10.2	98	18.6	3.3	2.0	8.5	9.4	12.0	14.0	14.6	15.6	10	0	0.0	9.6	0	0	0	0	0	0	1029.0	0.0	0.0	1.7				
04	2	09	02	02	97	14.9	83	19.2	7.6	4.9	10.9	10.5	11.8	13.7	14.2	15.4	10	0	0.0	9.2	0	0	0	0	0	0	1030.0	0.0	0.0	2.3				
05	0	09	09	02	97	14.4	62	17.7	10.3	6.6	10.5	11.9	12.9	14.1	14.1	15.7	10	0	0.0	10.7	0	0	0	0	0	0	1030.0	0.0	0.0	3.3				
06	8	04	05	02	97	11.9	64	15.8	6.9	5.0	9.3	10.6	12.2	13.5	13.9	15.0	10	0	0.2	2.8	0	0	0	0	0	0	1027.5	0.4	0.0	2.3				
07	8	04	02	60	95	12.2	87	14.8	9.9	6.0	10.3	11.7	13.0	13.3	13.7	14.8	10	0	0.3	0.0	0	0	0	0	0	0	1023.0	1.0	0.0	0.6				
08	8	36	02	02	97	13.1	88	16.2	11.5	7.9	11.8	12.5	13.2	13.3	13.5	14.7	10	0	0.1	1.1	0	0	0	0	0	0	1026.5	0.2	0.0	1.3				
09	1	36	05	02	97	11.8	78	16.0	8.1	6.0	10.3	10.9	12.5	13.7	13.7	14.6	10	0	0.0	6.0	0	0	0	0	0	0	1028.5	0.0	0.0	1.5				
10	2	31	02	02	97	10.3	89	14.5	3.5	3.1	8.0	8.5	11.0	13.1	13.5	14.7	10	0	0.0	8.1	0	0	0	0	0	0	1028.0	0.0	0.0	1.5				
11	0	36	02	02	97	9.6	94	16.6	3.3	2.1	7.4	8.0	10.2	12.6	13.1	14.5	10	0	0.0	7.7	0	0	0	0	0	0	1024.0	0.0	0.0	1.3				
12	7	04	02	02	97	12.1	84	16.8	8.7	4.5	10.6	10.7	11.5	12.6	12.8	14.3	10	0	2.0	4.0	0	0	0	0	0	0	1022.5	2.2	0.0	1.4				
13	8	04	02	02	97	10.2	85	13.4	8.0	5.4	10.0	10.6	11.7	12.7	12.9	14.1	10	0	0.1	4.5	0	0	0	0	0	0	1015.0	0.1	0.0	1.3				
14	7	04	02	02	97	10.8	82	14.0	8.8	6.0	10.4	10.7	11.8	12.6	12.7	14.0	10	0	0.1	1.5	0	0	0	0	0	0	1007.5	0.1	0.0	1.2				
15	7	18	02	02	96	10.9	93	17.0	8.3	5.0	10.5	10.7	11.8	12.6	12.7	13.9	10	0	13.2	3.3	0	0	0	0	0	0	1006.0	4.3	0.0	1.0				
16	8	22	05	61	96	12.1	95	17.5	6.5	4.2	10.7	10.6	11.2	12.5	12.7	13.9	20	0	2.0	4.2	0	0	0	0	0	0	1010.0	2.0	0.0	0.7				
17	6	00	00	11	95	11.9	95	16.9	6.6	4.5	9.4	9.9	11.2	12.2	12.6	13.8	10	0	2.2	6.3	0	0	0	0	0	0	1017.5	3.8	0.0	0.9				
18	8	27	02	02	97	11.3	90	13.8	8.4	5.1	10.0	10.2	11.2	12.2	12.6	13.7	10	0	tr	5.1	0	0	0	0	0	0	1018.0	0.0	0.0	1.8				
19	7	27	05	02	97	11.3	75	14.0	8.7	5.1	9.5	9.9	10.7	12.0	12.4	13.6	10	0	0.0	2.5	0	0	0	0	0	0	1022.5	0.0	0.0	1.2				
20	7	36	02	02	97	11.6	82	14.9	7.3	3.8	9.9	10.0	10.9	12.0	12.2	13.5	10	0	0.1	4.3	0	0	0	0	0	0	1022.5	0.2	0.0	1.1				
21	7	36	02	02	97	8.5	89	13.3	7.8	4.5	9.1	9.7	10.6	11.8	12.1	13.4	10	0	0.0	2.8	0	0	0	0	0	0	1021.5	0.0	0.0	0.9				
22	7	36	02	10	95	8.4	94	13.0	3.7	2.2	8.2	8.6	9.4	11.6	11.8	13.3	10	0	0.0	1.9	0	0	0	0	0	0	1018.5	0.0	0.0	0.6				
23	6	09	02	10	95	8.5	93	14.9	4.5	2.3	6.5	6.8	8.5	11.4	11.7	13.2	10	0	tr	5.4	0	0	0	0	0	0	1013.5	0.0	0.0	1.8				
24	8	04	05	10	95	10.3	80	13.5	8.5	7.6	9.6	9.8	10.5	11.3	11.6	13.0	10	0	1.5	0.0	0	0	0	0	0	0	1013.0	5.0	0.0	0.8				
25	8	09	02	21	95	10.0	89	12.9	9.5	8.3	10.4	10.5	10.7	11.5	11.6	12.9	10	0	1.1	0.0	0	0	0	0	0	0	1023.0	1.7	0.0	0.2				
26	8	00	00	10	95	11.9	94	15.0	10.0	7.0	11.2	11.2	11.6	11.7	11.6	12.9	10	0	tr	0.8	0	0	0	0	0	0	1029.0	0.0	0.0	0.6				
27	8	00	00	44	05	9.6	95	14.0	6.5	4.6	10.1	10.2	11.0	11.7	11.7	12.8	10	0	0.0	1.8	0	0	0	0	0	0	1033.5	0.0	0.0	0.8				
28	5	00	00	02	97	12.1	89	16.8	9.6	7.0	9.9	10.4	11.4	11.8	11.7	12.8	10	0	tr	3.4	0	0	0	0	0	0	1034.0	0.0	0.0	0.9				
29	8	00	00	20	94	12.3	90	14.6	10.9	7.2	9.3	9.3	12.0	12.2	12.0	12.8	10	0	0.1	0.0	0	0	0	0	0	0	1036.0	0.1	0.0	0.2				
30	9	00	00	45	03	10.5	94	11.7	8.5	5.7	11.1	11.1	11.9	12.3	12.1	12.8	10	0	tr	0.0	0	0	0	0	0	1	1031.0	0.0	0.0	0.3				
31	9	00	00	43	04	11.1	94	16.5	9.5	6.7	11.1	11.2	11.5	12.0	12.0	12.9	10	0	tr	5.0	0	0	0	0	0	1	1027.5	0.0	0.0	0.7				
Monthly means						11.1	88	15.4	7.7	5.2	9.9	10.3	11.5	12.6	12.8	14.0																		
Monthly totals																																		
Highest values																																		
Lowest values						14.9		19.2	11.5	8.3	11.8	12.5	13.5	15.1	15.4	16.0				13.2	10.7							5.2	0.0	3.3				
1981-2010 monthly climatological averages						8.4	62	11.7	3.3	2.0	6.5	6.8	8.5	11.3	11.6	12.8																		
						88	15.2	7.8	5.3	10.3	10.7	11.7	12.5	12.8	13.6			73.8	104.1							1014.5	51.7	4.3	34.9					

Key

DD: date

07GMT observations

N	cloud cover (oktas, 9=obscured)	dd	wind direction (degrees/10)
ff	wind speed (knots)		
ww	present weather code		
2	sky not changing	25	recent rain shower
3	cloud increasing	45	fog
10	mist	58	slight rain and drizzle
11	shallow fog	60	intermittent slight rain
21	recent rain	61	continuous slight rain

VV visibility (00-50 metres/100, 94 very poor, 95 poor, 96 moderate, 97 good)

Soil temperatures are for 0700GMT beneath bare soil (5, 10, 20cm) or grass (30, 50, 100cm)

09GMT observations

Temp	temperature (degC)	RH	relative humidity (%)
E	state of ground (00 dry, 10 moist, 20 wet, 90 cracked)	SS	snow depth (cm)
Press	air pressure (mb)		

24 hour readings

Max	maximum temperature (degC) beginning 09GMT	Min	minimum temperature (degC) ending 09GMT
Gmin	grass minimum temperature (degC) ending 09GMT	Rain	precipitation beginning 09GMT
Sun	sunshine (hours) sunrise-sunset	Rain hrs	hours of rainfall (>0.1mm/h) 09-09GMT
Fr. Hrs	hours of air frost (00-24GMT)	Pch Evap	Piche evaporation (ml) beginning 09GMT

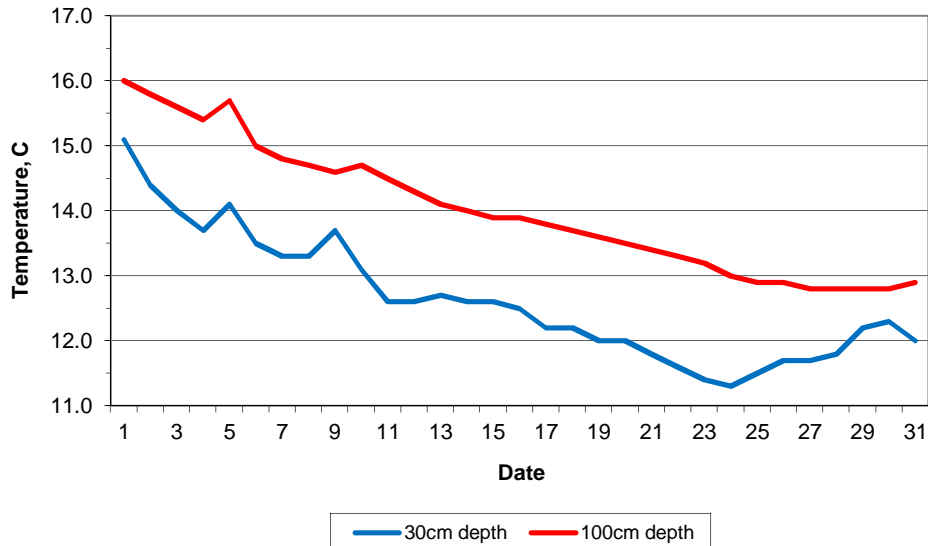
Days with

S	snow(5) or sleet(1) falling	L	50% snow cover at 09GMT	H	hail or ice pellets
T	thunder heard	G	gale	F	fog at 09GMT

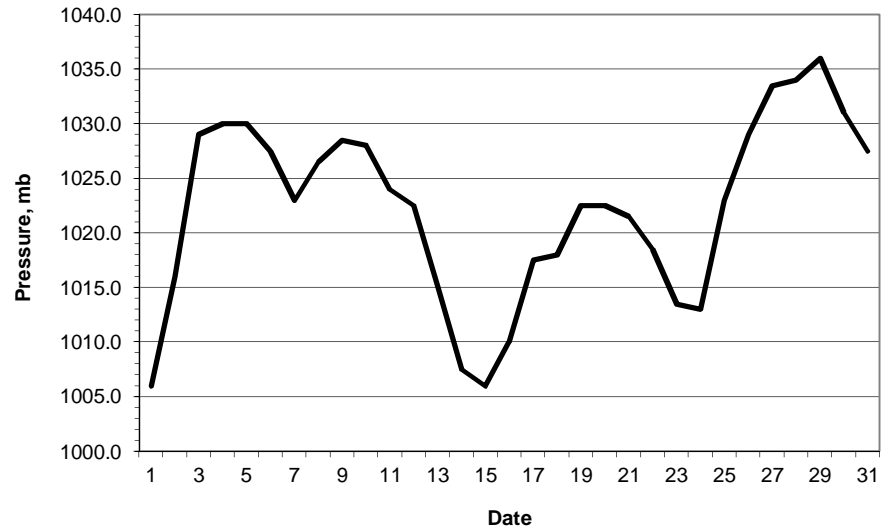
This information (and data for earlier months) is also available at

<http://www.met.reading.ac.uk/~brugge>

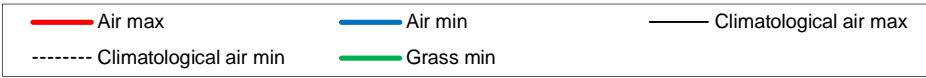
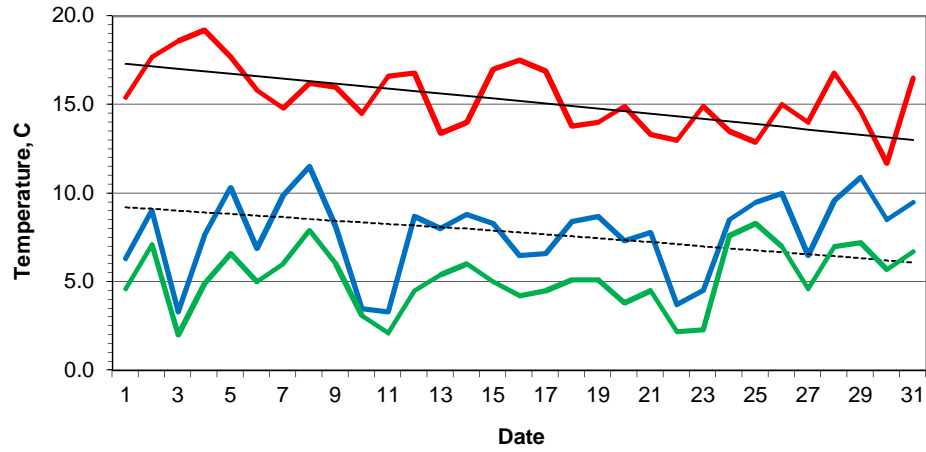
Daily soil temperatures, 0700GMT



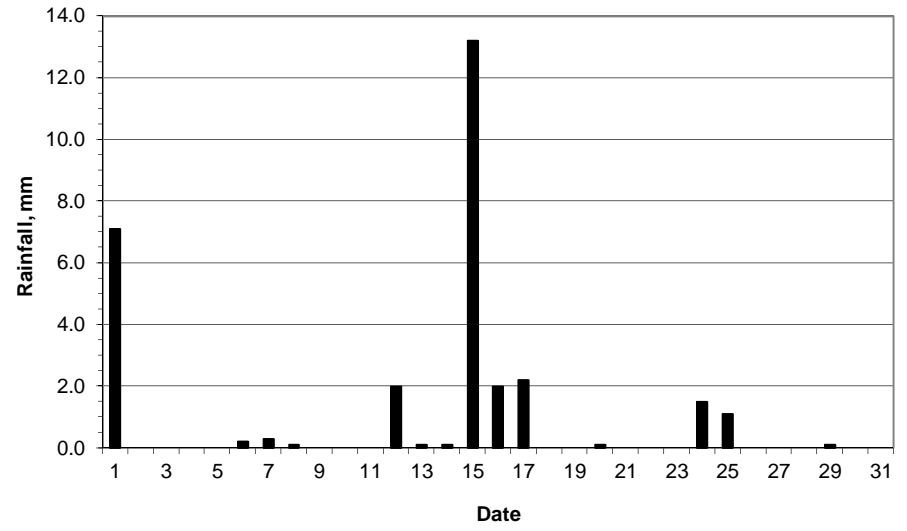
Mean sea level pressure, 0900GMT



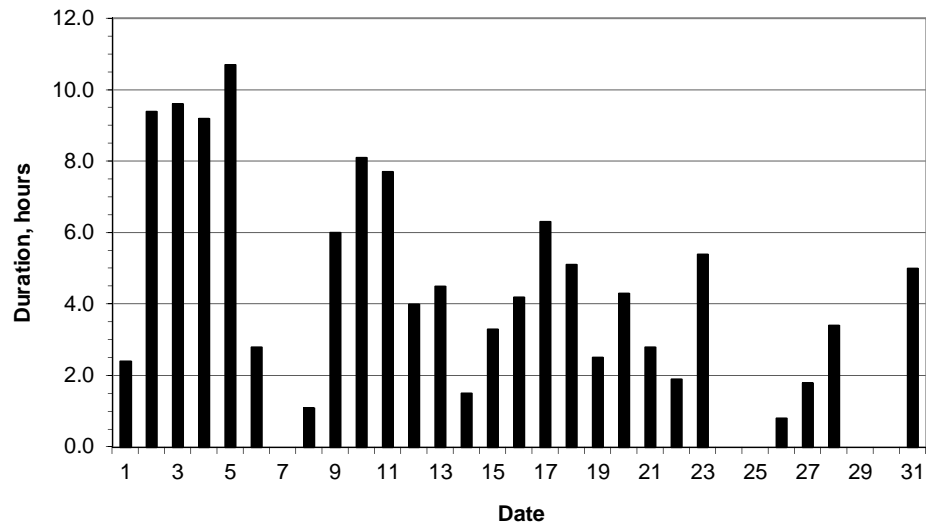
### Daily temperature extremes



### Daily rainfall



### Daily sunshine



### Daily evaporation

