

MAIDENHEAD METEOROLOGICAL OBSERVATIONS FOR OCTOBER 2014

DD	N	dd	ff	ww	VV	0900GMT		Temperature			Soil temperatures (depth in cm)						E	SS	Rain	Sun	S	L	H	T	G	F	Press	Rain	Fr.	Pch		
						Temp	RH	Max	Min	Gmin	5	10	20	30	50	100												hrs	hrs	Evap		
01	8	22	02	02	97	17.0	81	21.3	14.2	10.6	16.0	16.1	16.1	16.0	15.7	15.5	10	0	0.0	3.8	0	0	0	0	0	0	1023.5	0.0	0.0	1.3	Number of days with 2014 normal Snow/sleet falling 0 0.1 50% snow cover 09GMT 0 0.0 Hail or ice pellets 0 0.2 Thunder 1 0.6 Gale 0 0.1 Fog at 09GMT 0 0.8 Air frost 0 1.0 Ground frost 0 3.6 0.2mm precipitation 21 14.3 1.0mm precipitation 15 11.4 5.0mm precipitation 6 4.7 No sunshine 8 6.2 Another very warm and slightly wet month - temperatures did not seem to fall during the month and 21.3C on the 31st was the highest temperature on this date locally for over a century. MSL pressure was slightly below average with winds more frequently from the W or SW than normal.	
02	8	36	02	02	96	15.8	85	21.6	13.6	12.1	15.3	15.7	16.2	16.2	15.8	15.5	00	0	0.0	3.3	0	0	0	0	0	1029.0	0.0	0.0	1.1			
03	8	18	02	41	09	13.2	95	21.4	10.1	7.0	14.5	15.0	15.6	16.1	15.9	15.6	00	0	0.0	6.7	0	0	0	0	0	1023.5	0.0	0.0	1.4			
04	8	18	02	02	97	15.3	83	16.9	12.6	8.9	15.4	15.1	15.5	15.8	15.8	15.6	00	0	10.1	2.8	0	0	0	0	0	1010.0	5.8	0.0	0.3			
05	2	09	02	02	97	7.5	95	15.9	2.0	0.2	9.0	10.0	12.2	14.6	15.4	15.6	10	0	0.8	8.5	0	0	0	0	0	1021.0	1.8	0.0	1.1			
06	8	13	02	60	97	11.8	84	12.2	6.1	2.8	11.2	11.6	13.2	14.0	15.2	15.4	10	0	16.1	0.0	0	0	0	0	0	1002.0	7.5	0.0	0.2			
07	6	18	02	01	97	10.1	93	15.6	6.6	3.4	10.3	11.1	12.3	13.5	14.4	15.2	10	0	2.1	7.9	0	0	0	0	0	996.0	1.4	0.0	1.3			
08	8	04	02	21	97	12.5	95	17.3	4.2	1.5	10.4	10.6	11.7	13.1	13.7	14.9	10	0	8.9	3.5	0	0	1	0	0	996.0	1.8	0.0	1.0			
09	2	22	05	03	96	15.4	72	16.6	10.0	6.1	10.7	11.1	12.3	13.2	13.6	14.8	10	0	4.6	4.6	0	0	0	0	0	998.0	2.9	0.0	1.0			
10	1	00	00	02	96	11.0	93	17.7	5.8	3.0	9.9	10.6	12.0	13.1	13.5	14.6	10	0	2.2	6.3	0	0	0	0	0	1010.0	3.2	0.0	0.9			
11	6	18	02	02	97	12.2	93	17.0	8.6	7.0	10.0	10.0	12.5	13.0	13.4	14.5	10	0	0.0	4.6	0	0	0	0	0	1010.5	0.0	0.0	0.7			
12	8	04	02	02	96	8.6	95	14.0	4.4	2.2	8.5	9.0	11.8	12.9	13.4	14.4	10	0	15.1	0.0	0	0	0	0	0	1013.0	8.0	0.0	0.7			
13	8	05	13	21	96	11.9	92	13.5	8.6	7.0	11.6	11.6	12.2	12.8	13.3	14.2	20	0	10.2	0.0	0	0	0	0	0	998.5	9.0	0.0	0.4			
14	8	27	02	20	95	12.0	94	13.2	11.9	11.0	12.5	12.6	12.8	13.0	13.2	14.1	10	0	0.7	0.0	0	0	0	0	0	1004.5	2.7	0.0	0.3			
15	8	09	02	02	96	12.4	94	14.7	11.3	7.9	12.7	12.7	12.9	13.1	13.4	14.0	10	0	7.8	0.0	0	0	0	0	0	1005.5	6.7	0.0	0.1			
16	7	18	02	12	94	13.3	95	17.8	10.4	8.1	12.0	12.7	13.0	13.3	13.2	13.8	10	0	4.8	3.7	0	0	0	0	0	1002.0	2.3	0.0	0.6			
17	8	18	02	02	96	15.3	94	19.4	11.4	8.4	12.8	14.9	13.5	13.6	13.5	13.9	10	0	1.0	1.9	0	0	0	0	0	1009.5	1.5	0.0	1.0			
18	7	18	13	02	96	17.8	84	19.2	15.3	12.9	15.0	14.8	14.4	14.1	13.7	13.9	10	0	1.9	0.1	0	0	0	0	0	1009.0	1.8	0.0	1.2			
19	7	22	09	02	97	15.7	90	19.5	14.8	12.9	14.9	14.8	14.9	14.5	14.1	14.0	10	0	0.0	5.4	0	0	0	0	0	1011.5	0.0	0.0	1.4			
20	7	22	02	02	97	14.0	86	17.0	11.7	8.7	12.8	13.1	14.0	14.4	14.2	14.1	10	0	1.7	4.4	0	0	0	0	0	1016.0	1.0	0.0	1.1			
21	7	27	19	25	97	12.9	71	14.4	11.6	9.0	12.7	12.9	13.8	14.2	14.2	14.2	10	0	0.2	6.0	0	0	0	0	0	1003.5	0.3	0.0	2.0			
22	1	31	02	02	97	10.1	79	14.4	5.7	3.0	8.7	9.5	11.4	13.2	13.8	14.2	10	0	0.0	4.1	0	0	0	0	0	1026.0	0.0	0.0	1.5			
23	7	22	05	02	97	13.2	77	16.3	10.1	3.6	11.6	11.7	12.2	13.0	13.4	14.1	10	0	1.1	0.5	0	0	0	0	0	1021.0	1.4	0.0	0.9			
24	7	18	02	02	97	14.4	93	16.9	11.8	10.2	13.2	13.2	13.4	13.5	13.5	14.0	10	0	0.6	0.0	0	0	0	0	0	1015.5	0.5	0.0	1.0			
25	4	27	02	01	97	10.2	94	15.3	5.8	4.1	11.5	12.0	12.9	13.3	13.4	14.0	10	0	0.0	2.0	0	0	0	0	0	1018.0	0.0	0.0	1.5			
26	8	22	05	02	97	13.5	73	15.3	10.2	8.5	10.8	11.2	12.6	13.2	13.3	13.9	10	0	0.0	0.0	0	0	0	0	0	1021.0	0.0	0.0	1.0			
27	0	00	00	02	97	14.7	83	19.3	12.3	11.0	11.8	12.2	12.9	13.1	13.2	13.8	10	0	tr	7.3	0	0	0	0	0	1020.5	0.0	0.0	1.0			
28	0	13	02	11	96	12.6	93	19.8	7.6	5.3	10.0	10.7	12.0	13.0	13.4	13.8	10	0	0.4	6.4	0	0	0	0	0	1014.0	0.4	0.0	2.1			
29	8	36	02	02	96	12.2	85	15.3	7.9	6.2	12.7	12.8	13.0	13.2	13.1	13.7	10	0	2.0	0.0	0	0	0	0	0	1015.5	2.5	0.0	0.1			
30	8	13	02	02	95	15.3	95	17.8	12.2	11.4	13.4	13.3	13.4	13.2	13.2	13.7	10	0	tr	0.2	0	0	0	0	0	1017.5	0.0	0.0	0.4			
31	7	00	00	02	95	10.8	94	21.3	10.8	9.0	12.0	12.3	13.0	13.4	13.3	13.7	10	0	0.5	5.3	0	0	0	0	0	1017.5	0.9	0.0	1.1			
Monthly means						13.0	88	17.0	9.7	7.2	12.1	12.4	13.2	13.8	13.9	14.4											1012.2					
Monthly totals																				92.8	99.3						63.4	0.0	29.7			
Highest values						17.8		21.6	15.3	12.9	16.0	16.1	16.2	16.2	15.9	15.6			16.1	8.5							9.0	0.0	2.1			
Lowest values						7.5	71	12.2	2.0	0.2	8.5	9.0	11.4	12.8	13.1	13.7																
1981-2010 monthly climatological averages																																
						88	15.2	7.8	5.3	10.3	10.7	11.7	12.5	12.8	13.6			73.8	104.1								1014.5	51.7	4.3	34.9		

Key

DD: date

07GMT observations

- N cloud cover (oktas, 9=obscured)
- ff wind speed (knots)
- ww present weather code
 - 2 sky not changing
 - 3 cloud increasing
 - 10 mist
 - 11 shallow fog
 - 21 recent rain
- VV visibility (00-50 metres/100, 94 very poor, 95 poor, 96 moderate, 97 good)
- Soil temperatures are for 0700GMT beneath bare soil (5, 10, 20cm) or grass (30, 50, 100cm)
- dd wind direction (degrees/10)
- 25 recent rain shower
- 45 fog
- 58 slight rain and drizzle
- 60 intermittent slight rain
- 61 continuous slight rain

09GMT observations

- Temp temperature (degC)
- E state of ground (00 dry, 10 moist, 20 wet, 90 cracked)
- Press air pressure (mb)
- RH relative humidity (%)
- SS snow depth (cm)

24 hour readings

- Max maximum temperature (degC) beginning 09GMT
- Gmin grass minimum temperature (degC) ending 09GMT
- Sun sunshine (hours) sunrise-sunset
- Fr. Hrs hours of air frost (00-24GMT)
- Min minimum temperature (degC) ending 09GMT
- Rain precipitation beginning 09GMT
- Rain hrs hours of rainfall (>0.1mm/h) 09-09GMT
- Pch Evap Piche evaporation (ml) beginning 09GMT

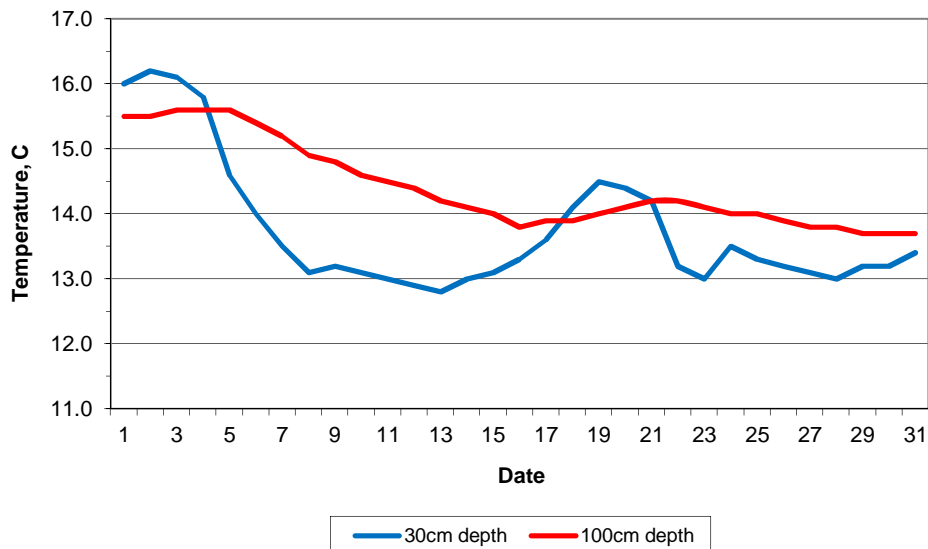
Days with

- S snow(5) or sleet(1) falling
- T thunder heard
- L 50% snow cover at 09GMT
- G gale
- H hail or ice pellets
- F fog at 09GMT

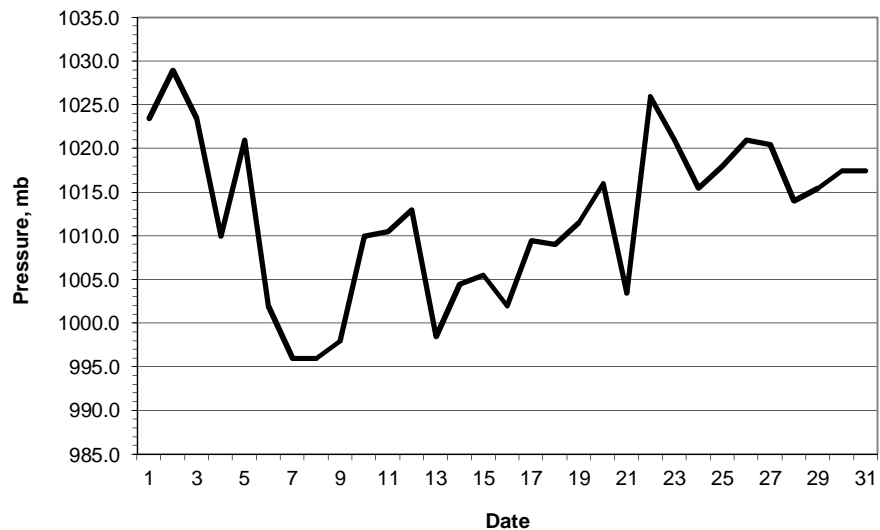
This information (and data for earlier months) is also available at

<http://www.met.reading.ac.uk/~brugge>

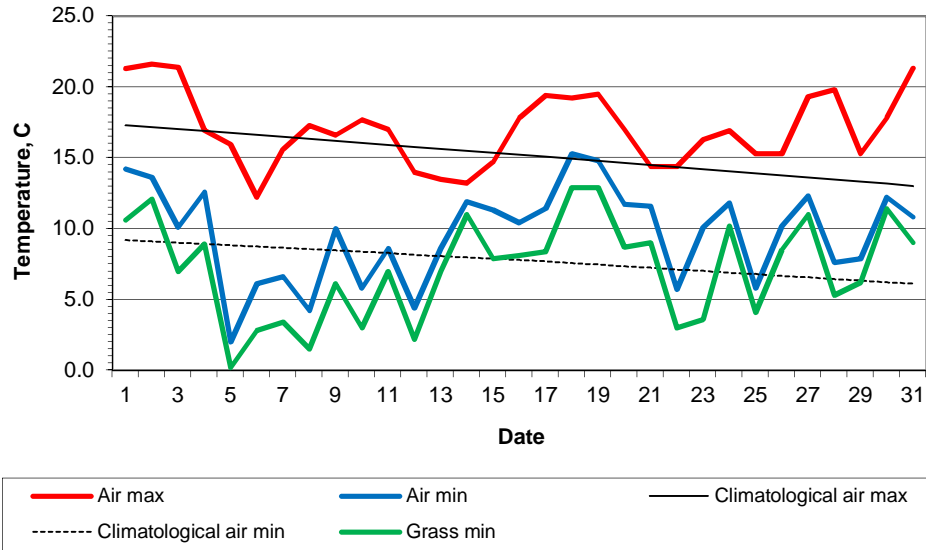
Daily soil temperatures, 0700GMT



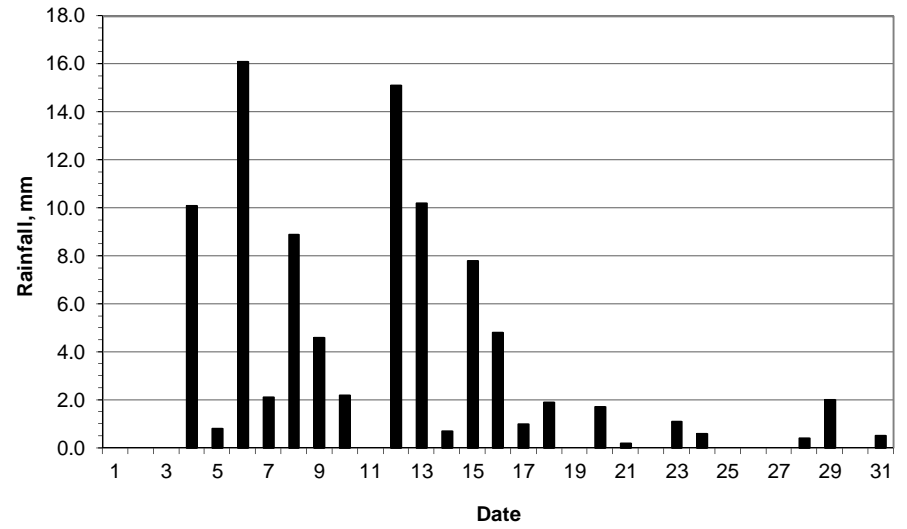
Mean sea level pressure, 0900GMT



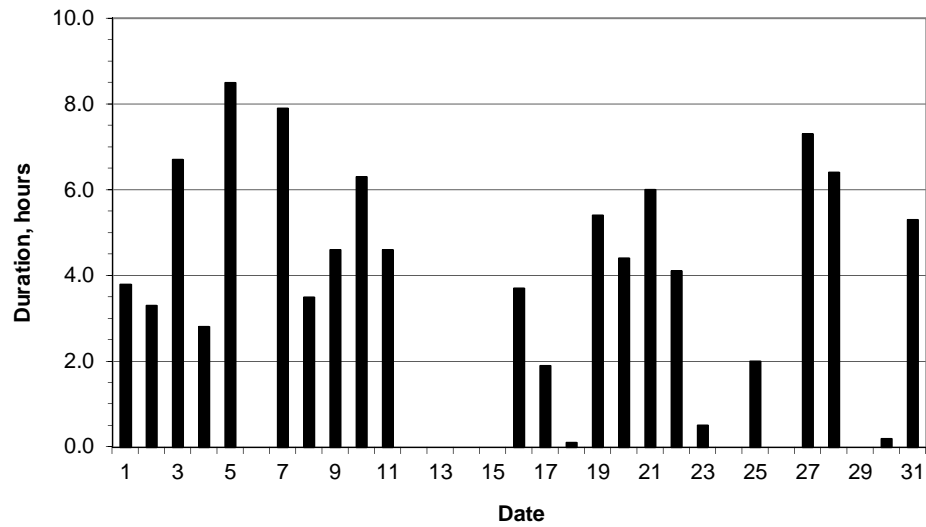
Daily temperature extremes



Daily rainfall



Daily sunshine



Daily evaporation

