

MAIDENHEAD METEOROLOGICAL OBSERVATIONS FOR OCTOBER 2013

0900GMT						Temperature				Soil temperatures (depth in cm)							Rain Fr. Pch															
DD	N	dd	ff	ww	VV	Temp	RH	Max	Min	Gmin	5	10	20	30	50	100	E	SS	Rain	Sun	S	L	H	T	G	F	Press	hrs	hrs	Evap		
01	7	00	00	02	95	13.7	85	17.3	10.8	7.5	12.8	13.3	14.3	14.8	14.7	14.7	00	0	6.4	0.7	0	0	0	0	0	0	1008.5	2.8	0.0	1.6	Number of days with 2013 normal Snow/sleet falling 0 0.1 50% snow cover 09GMT 0 0.0 Hail or ice pellets 0 0.2 Thunder 2 0.6 Gale 0 0.1 Fog at 09GMT 0 0.8 Air frost 0 1.0 Ground frost 1 3.6 0.2mm precipitation 19 14.3 1.0mm precipitation 18 11.4 5.0mm precipitation 5 4.7 No sunshine 3 6.2 A wet and mild month, with a little less sunshine than normal. Only one ground frost was recorded, on the 30th. Almost all the rain fell in the last 20 days - with 25.7 mm associated with the depression that gave stormy conditions during the morning of the 28th (when gusts of 55 mph were recorded nearby).	
02	8	13	09	02	96	15.0	95	21.1	13.7	10.3	13.8	14.3	14.6	14.8	14.5	14.7	10	0	0.1	3.0	0	0	0	0	0	1010.0	0.1	0.0	0.9			
03	8	04	02	10	94	15.0	94	19.2	13.4	10.2	14.4	14.6	14.5	15.0	14.6	14.6	10	0	1.1	0.0	0	0	0	0	0	1008.5	0.9	0.0	0.4			
04	8	18	05	02	97	18.0	85	21.2	15.0	13.1	16.1	15.9	15.5	15.3	14.9	14.7	10	0	0.0	4.6	0	0	0	0	0	1006.5	0.0	0.0	1.3			
05	7	27	02	02	97	16.0	79	19.2	13.1	10.5	14.9	15.1	15.4	15.5	15.0	14.8	10	0	0.0	0.5	0	0	0	0	0	1019.0	0.0	0.0	0.6			
06	4	31	02	02	96	13.1	87	21.3	6.0	4.6	11.6	12.7	14.1	15.2	15.1	14.8	10	0	0.0	9.6	0	0	0	0	0	1025.0	0.0	0.0	1.8			
07	9	00	00	45	03	12.6	95	20.8	8.7	6.2	12.8	13.2	14.1	14.9	14.9	14.8	10	0	0.0	4.2	0	0	0	0	0	1025.5	0.0	0.0	0.5			
08	0	00	00	10	94	16.1	88	19.8	11.6	8.0	13.4	14.1	14.3	14.9	14.9	14.8	10	0	tr	4.1	0	0	0	0	0	1024.5	0.0	0.0	1.0			
09	7	27	02	02	97	14.7	89	18.1	11.5	8.1	14.5	14.6	14.5	15.2	14.9	14.9	10	0	0.0	2.3	0	0	0	0	0	1020.0	0.0	0.0	1.7			
10	0	31	09	02	97	9.8	65	12.8	6.6	4.0	10.0	11.1	13.0	14.5	14.7	14.8	00	0	0.4	6.6	0	0	0	0	0	1020.0	0.6	0.0	1.3			
11	6	36	09	80	97	12.3	73	13.9	8.1	4.1	10.5	11.2	12.3	13.6	14.3	14.7	10	0	2.9	2.4	0	0	0	0	0	1020.5	6.4	0.0	2.4			
12	7	09	09	21	97	10.9	82	14.8	9.8	7.2	12.3	12.7	13.0	13.5	14.0	14.5	10	0	1.6	5.0	0	0	0	0	0	1019.5	2.5	0.0	1.1			
13	8	27	05	60	97	11.5	92	11.7	9.9	7.6	11.6	12.2	12.8	13.5	14.0	14.4	10	0	6.3	0.0	0	0	0	0	0	1010.5	6.0	0.0	0.1			
14	8	27	02	02	97	9.9	91	11.2	8.5	6.6	10.7	10.7	11.6	13.0	13.7	14.2	10	0	3.9	0.1	0	0	0	0	0	1007.5	2.4	0.0	0.3			
15	1	00	00	02	96	9.1	93	13.1	8.2	5.6	10.6	11.0	11.8	13.6	13.4	14.1	10	0	tr	2.8	0	0	0	0	0	1010.0	0.0	0.0	0.6			
16	8	09	02	46	03	8.7	96	14.6	4.4	3.5	9.3	9.9	11.0	12.3	13.1	13.9	10	0	3.9	3.0	0	0	0	0	0	1009.5	4.2	0.0	0.2			
17	7	27	02	25	97	14.1	90	19.4	8.7	7.2	10.5	10.4	11.4	12.1	12.5	13.8	10	0	0.0	6.9	0	0	0	0	0	1013.5	0.0	0.0	1.0			
18	8	09	02	02	96	13.0	94	17.1	9.3	9.0	11.7	12.1	12.2	12.6	12.8	13.6	10	0	1.3	0.2	0	0	0	0	0	1015.5	2.0	0.0	0.6			
19	8	13	02	02	96	15.3	94	17.4	13.0	10.0	13.3	13.3	13.0	13.0	13.0	13.5	10	0	3.0	0.2	0	0	0	0	0	1004.5	3.5	0.0	0.5			
20	8	18	05	61	95	14.0	88	18.4	11.8	8.0	12.2	12.7	12.5	13.2	13.2	13.6	20	0	11.1	3.3	0	0	0	1	0	1004.5	4.3	0.0	0.9			
21	8	18	02	60	96	15.1	93	17.4	12.2	9.2	12.6	11.7	13.0	13.4	13.3	13.6	10	0	2.7	0.2	0	0	0	0	0	1005.0	4.9	0.0	1.0			
22	8	18	05	61	95	15.9	92	18.2	13.7	11.8	14.3	14.2	14.0	13.7	13.4	13.6	10	0	9.5	0.4	0	0	0	1	0	997.0	4.8	0.0	0.8			
23	7	18	09	25	97	14.5	90	17.7	13.1	9.9	13.8	13.8	14.0	14.0	13.5	13.6	20	0	0.0	6.1	0	0	0	0	0	995.0	0.0	0.0	1.1			
24	0	09	02	02	96	9.1	94	18.1	4.1	2.3	9.4	10.5	11.9	13.2	13.5	13.7	10	0	2.2	8.0	0	0	0	0	0	1015.0	3.8	0.0	1.2			
25	8	13	05	80	97	15.6	94	18.1	9.1	3.4	12.7	12.8	12.9	13.1	13.4	13.8	10	0	0.0	3.0	0	0	0	0	0	1003.0	0.0	0.0	1.2			
26	6	18	05	02	86	16.1	80	17.0	14.3	10.0	13.0	13.0	13.1	13.3	13.4	13.8	10	0	3.8	1.5	0	0	0	0	0	1005.0	3.3	0.0	1.0			
27	3	18	05	02	97	12.8	84	16.3	10.3	8.0	13.0	13.1	13.2	13.4	13.4	13.7	10	0	25.7	5.0	0	0	0	0	0	995.0	9.2	0.0	2.1			
28	6	32	13	01	97	12.0	76	14.4	11.2	10.5	12.8	13.1	13.4	13.5	13.4	13.7	10	0	3.0	3.7	0	0	0	0	0	990.0	1.0	0.0	0.9			
29	0	27	02	02	97	8.8	91	14.4	5.7	3.0	9.0	10.0	11.4	12.8	13.3	13.6	10	0	0.1	7.3	0	0	0	0	0	1009.5	0.1	0.0	0.8			
30	1	00	00	02	96	5.4	94	14.0	2.0	-0.2	7.2	8.2	10.0	11.9	12.7	13.6	10	0	1.3	5.0	0	0	0	0	0	1021.5	2.4	0.0	1.3			
31	8	31	02	02	96	12.1	90	13.0	5.4	0.7	11.2	11.3	11.5	11.9	12.3	13.4	10	0	2.4	0.0	0	0	0	0	0	1017.0	1.2	0.0	0.6			
Monthly means						12.9	88	16.8	9.8	7.1	12.1	12.5	13.0	13.7	13.8	14.1											1010.8					
Monthly totals																				92.7	99.7							66.4	0.0	30.8		
Highest values						18.0		21.3	15.0	13.1	16.1	15.9	15.5	15.5	15.1	14.9			25.7	9.6								9.2	0.0	2.4		
Lowest values						5.4	65	11.2	2.0	-0.2	7.2	8.2	10.0	11.9	12.3	13.4																
1981-2010 monthly climatological averages						88	15.2	7.8	5.3	10.3	10.7	11.7	12.5	12.8	13.6					73.8	104.1								1014.5	51.7	4.3	34.9

Key

DD: date

07GMT observations

- N cloud cover (oktas, 9=obscured)
- ff wind speed (knots)
- ww present weather code
 - 2 sky not changing
 - 3 cloud increasing
 - 10 mist
 - 11 shallow fog
 - 21 recent rain
- VV visibility (00-50 metres/100, 94 very poor, 95 poor, 96 moderate, 97 good)
- Soil temperatures are for 0700GMT beneath bare soil (5, 10, 20cm) or grass (30, 50, 100cm)
- dd wind direction (degrees/10)
- 25 recent rain shower
- 45 fog
- 58 slight rain and drizzle
- 60 intermittent slight rain
- 61 continuous slight rain

09GMT observations

- Temp temperature (degC)
- E state of ground (00 dry, 10 moist, 20 wet, 90 cracked)
- Press air pressure (mb)
- RH relative humidity (%)
- SS snow depth (cm)

24 hour readings

- Max maximum temperature (degC) beginning 09GMT
- Gmin grass minimum temperature (degC) ending 09GMT
- Sun sunshine (hours) sunrise-sunset
- Fr. Hrs hours of air frost (00-24GMT)
- Min minimum temperature (degC) ending 09GMT
- Rain precipitation beginning 09GMT
- Rain hrs hours of rainfall (>0.1mm/h) 09-09GMT
- Pch Evap Piche evaporation (ml) beginning 09GMT

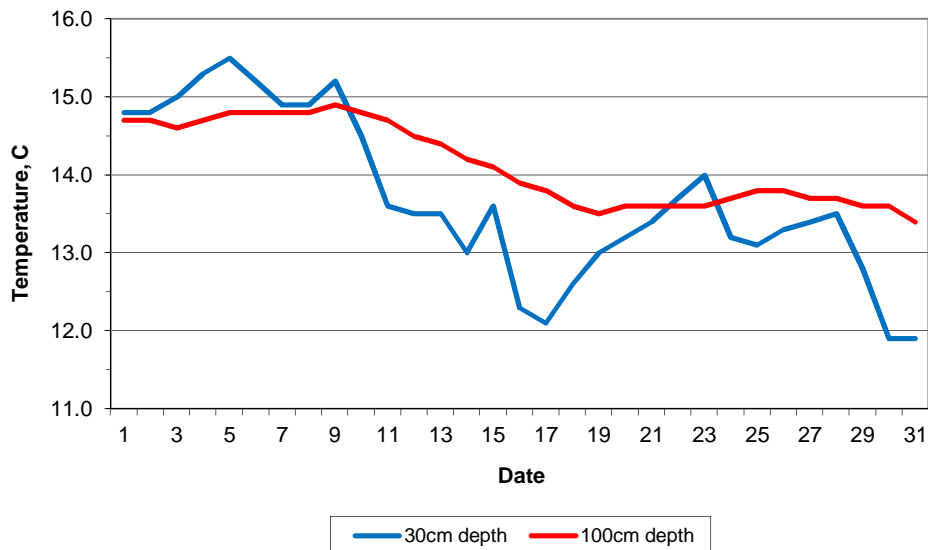
Days with

- S snow(5) or sleet(1) falling
- T thunder heard
- L 50% snow cover at 09GMT
- G gale
- H hail or ice pellets
- F fog at 09GMT

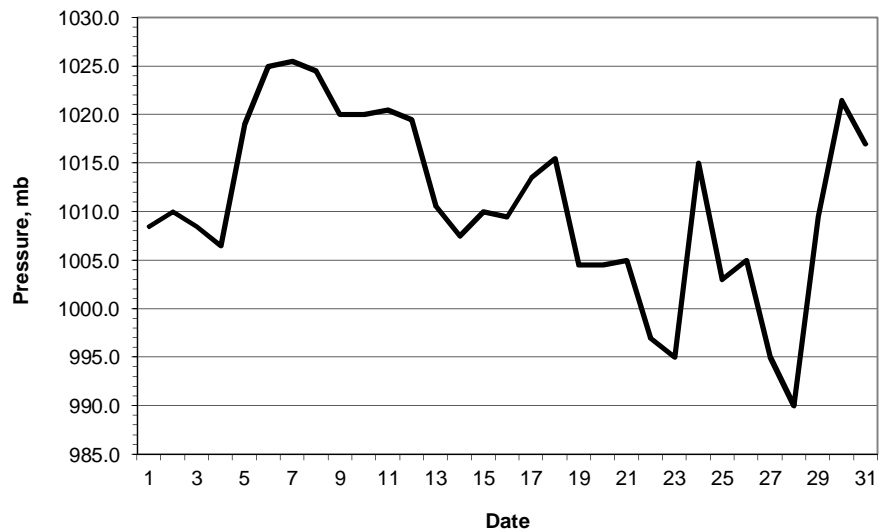
This information (and data for earlier months) is also available at

<http://www.met.reading.ac.uk/~brugge>

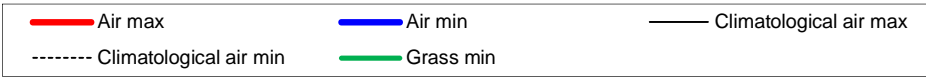
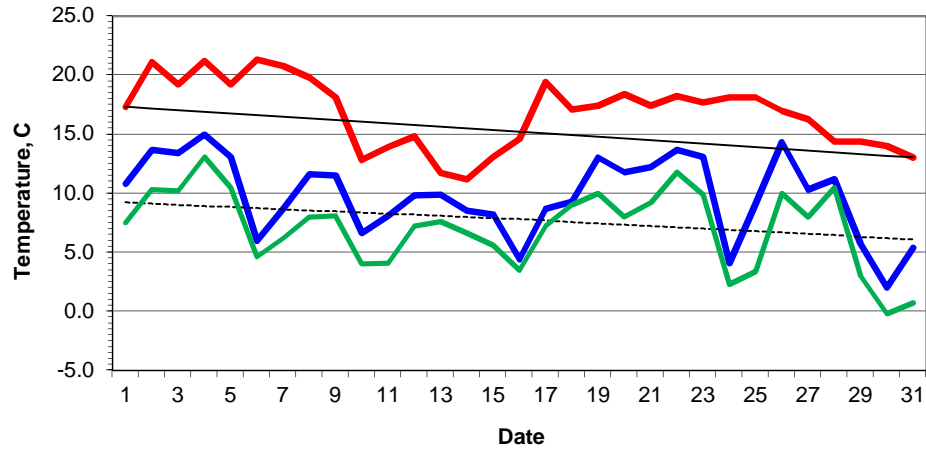
Daily soil temperatures, 0700GMT



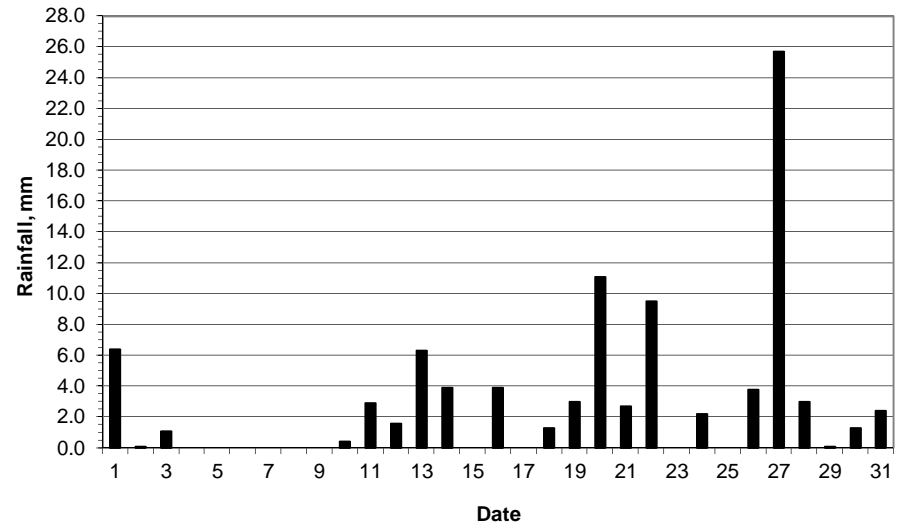
Mean sea level pressure, 0900GMT



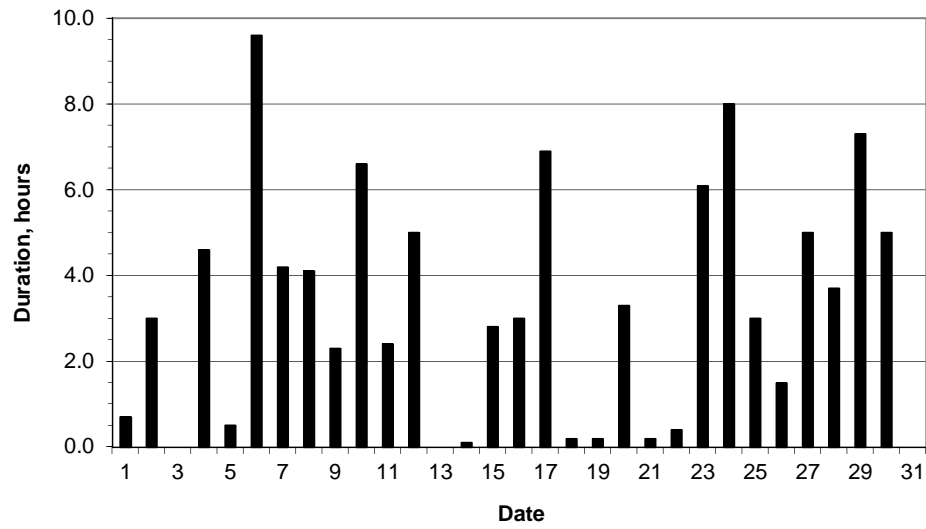
Daily temperature extremes



Daily rainfall



Daily sunshine



Daily evaporation

