

MAIDENHEAD METEOROLOGICAL OBSERVATIONS FOR OCTOBER 2009

		0900GMT		Temperature			Soil temperatures (depth in cm)																			Rain	Fr.	Pch									
DD	N	dd	ff	ww	VV	Temp	RH	Max	Min	Gmin	5	10	20	30	50	100	E	SS	Rain	Sun	S	L	H	T	G	F	Press	hrs	hrs	Evap							
01	6	27	02	01	97	14.5	64	17.2	11.9	9.0	13.9	14.4	14.9	15.0	15.1	00	0	0.0	8.2	0	0	0	0	0	0	0	1019.5	0.0	0.0	0.8	Number of						
02	6	27	02	02	97	14.0	74	18.0	6.2	4.5	11.3	12.2	13.6	14.5	14.9	15.1	00	0	0.0	7.0	0	0	0	0	0	0	1020.5	0.0	0.0	2.8	days with						
03	8	27	13	02	97	13.9	73	16.3	12.1	10.4	13.4	13.7	14.2	14.5	15.0	15.0	00	0	1.4	0.2	0	0	0	0	0	0	1010.5	0.6	0.0	1.6	2009 normal						
04	7	27	05	02	97	12.9	75	16.0	7.8	6.7	11.7	12.6	14.0	14.5	14.6	15.0	10	0	0.0	4.7	0	0	0	0	0	0	1012.5	0.0	0.0	1.8	Snow/sleet falling						
05	8	09	05	03	97	12.4	89	16.2	10.8	8.5	12.8	13.0	13.8	14.3	14.8	14.9	00	0	6.1	0.0	0	0	0	0	0	0	1010.0	5.9	0.0	0.2	0 0.0						
06	8	10	02	21	96	16.2	95	19.0	12.4	11.4	13.9	14.1	14.2	14.3	14.8	14.8	10	0	2.3	0.0	0	0	0	0	0	0	1006.5	2.0	0.0	0.8	50% snow cover 09GMT						
07	8	23	09	02	97	12.9	88	13.0	12.8	11.8	14.9	15.1	15.4	15.0	14.8	14.8	10	0	12.5	0.0	0	0	0	0	0	0	1011.5	8.0	0.0	0.5	0 0.0						
08	6	33	02	02	97	10.5	92	15.5	5.1	3.6	10.7	11.7	13.4	14.3	14.7	14.8	10	0	0.0	9.6	0	0	0	0	0	0	1018.0	0.0	0.0	1.3	Hail or ice pellets						
09	7	05	02	03	97	10.3	84	14.5	6.3	3.6	9.7	10.4	12.2	13.4	14.5	14.7	10	0	1.1	0.9	0	0	0	0	0	0	1020.0	0.8	0.0	1.0	0 0.2						
10	0	25	05	02	96	14.5	87	17.5	10.3	5.1	11.8	12.2	12.9	13.4	14.0	14.5	10	0	0.1	6.8	0	0	0	0	0	0	1014.5	0.1	0.0	1.2	Thunder						
11	8	22	05	02	97	13.1	91	14.9	11.2	8.6	12.7	12.8	13.2	13.7	14.0	14.4	10	0	2.8	0.4	0	0	0	0	0	0	1016.0	3.4	0.0	0.6	0 0.5						
12	0	34	09	02	97	12.0	80	16.0	7.9	5.4	10.2	10.9	12.4	13.4	13.9	14.3	10	0	0.0	7.9	0	0	0	0	0	0	1029.0	0.0	0.0	1.0	Gale						
13	6	27	02	02	96	7.8	93	15.4	2.4	1.2	8.4	9.4	11.4	12.8	13.8	14.3	10	0	0.2	7.7	0	0	0	0	0	0	1031.5	0.4	0.0	1.4	0 0.2						
14	8	22	02	02	96	11.2	95	15.0	7.8	3.8	11.2	11.1	11.9	12.6	13.4	14.1	10	0	0.0	0.1	0	0	0	0	0	0	1031.0	0.0	0.0	1.1	Fog at 09GMT						
15	7	23	02	02	97	10.3	86	13.9	9.5	9.1	11.2	11.4	12.2	12.8	13.4	14.0	10	0	tr	0.1	0	0	0	0	0	0	1034.0	0.0	0.0	1.0	0 2.0						
16	7	32	09	02	97	13.0	77	14.3	10.3	9.4	12.3	12.2	12.5	12.9	13.3	13.9	10	0	0.0	4.4	0	0	0	0	0	0	1033.5	0.0	0.0	1.4	Air frost						
17	7	31	02	02	97	9.1	76	12.1	5.7	4.3	9.3	10.0	11.5	12.6	13.3	13.9	10	0	0.0	0.1	0	0	0	0	0	0	1032.0	0.0	0.0	1.4	0 0.8						
18	8	28	02	03	97	5.6	92	12.0	1.1	0.0	7.8	8.4	10.4	11.8	12.7	13.7	10	0	0.0	2.5	0	0	0	0	0	0	1027.0	0.0	0.0	1.4	Ground frost						
19	8	22	02	02	97	8.1	88	12.6	3.2	1.5	8.3	8.8	10.0	11.3	12.3	13.5	00	0	tr	0.0	0	0	0	0	0	0	1016.0	0.0	0.0	1.8	0 4.5						
20	8	18	13	02	97	9.6	79	14.0	7.0	3.0	8.6	8.7	10.0	11.0	12.2	13.3	10	0	1.5	0.0	0	0	0	0	0	0	999.0	2.8	0.0	1.0	0.2mm precipitator						
21	8	15	02	02	96	12.2	96	15.1	9.6	7.2	10.6	10.4	10.8	11.4	12.1	13.1	10	0	0.1	0.1	0	0	0	0	0	0	998.0	0.1	0.0	0.7	13 14.0						
22	7	14	02	02	96	11.5	98	15.0	9.3	7.0	10.3	10.4	11.1	11.8	12.1	13.0	10	0	0.0	0.7	0	0	0	0	0	0	998.5	0.0	0.0	0.9	1.0mm precipitator						
23	0	18	02	02	96	11.0	95	16.0	4.7	3.7	8.9	9.6	11.1	11.9	12.2	13.0	10	0	2.0	4.3	0	0	0	0	0	0	1009.0	3.4	0.0	0.7	11 11.4						
24	8	18	13	61	95	15.4	97	17.6	11.0	8.9	12.7	12.3	12.0	12.1	12.2	13.0	10	0	0.5	1.5	0	0	0	0	0	0	1007.0	0.7	0.0	1.0	5.0mm precipitation						
25	5	22	09	03	97	13.3	82	16.5	10.8	9.0	11.2	11.2	12.0	12.4	12.6	13.0	10	0	tr	6.4	0	0	0	0	0	0	1012.0	0.0	0.0	1.3	3 4.6						
26	2	18	01	02	97	11.5	96	15.6	8.4	6.9	10.0	10.4	11.5	12.2	12.6	13.0	10	0	2.3	6.9	0	0	0	0	0	0	1017.5	4.5	0.0	1.1	No sunshine						
27	8	15	01	02	96	14.6	95	17.1	9.4	6.8	12.3	12.0	12.0	12.2	12.7	13.0	10	0	tr	1.0	0	0	0	0	0	0	1019.5	0.0	0.0	0.5	5 6.6						
28	7	22	01	02	96	11.7	97	17.5	8.6	7.5	11.1	11.1	11.9	12.4	12.7	13.0	10	0	0.0	1.1	0	0	0	0	0	0	1018.5	0.0	0.0	0.5	Slightly drier than normal and						
29	7	21	01	02	96	12.1	96	16.6	9.6	7.5	11.6	11.6	12.0	12.4	12.6	13.0	10	0	0.0	0.1	0	0	0	0	0	0	1022.0	0.0	0.0	0.9	a little on the dull side.						
30	7	18	01	02	95	12.0	97	15.9	10.5	7.9	11.1	11.4	12.0	12.4	12.6	13.0	10	0	6.5	0.4	0	0	0	0	0	0	1023.0	2.8	0.0	0.9	However, it was a warmer-						
31	8	23	02	63	94	13.3	96	16.8	11.8	9.6	12.2	12.0	12.3	12.5	12.6	13.0	10	0	4.0	2.2	0	0	0	0	0	0	1020.5	2.9	0.0	0.7	then-average month without						
Monthly means						12.0	88	15.6	8.6	6.5	11.2	11.5	12.3	13.0	13.4	13.9													1017.4								
Monthly totals																		43.4	85.3			38.4	0.0	33.3													
Highest values						16.2	19.0	12.8	11.8	14.9	15.1	15.4	15.0	15.0	15.1													12.5	9.6			8.0	0.0	2.8			
Lowest values						5.6	64	12.0	1.1	0.0	7.8	8.4	10.0	11.0	12.1	13.0																					
1971-2000 monthly climatological averages						88	15.0	7.3	4.9	9.9	10.5	11.5	12.2	12.6	13.2													68.7	100.4			1015.1	51.8	4.8	35.6		

Number of days with 2009 normal

Snow/sleet falling 0 0.0

50% snow cover 09GMT 0 0.0

Hail or ice pellets 0 0.2

Thunder 0 0.5

Gale 0 0.2

Fog at 09GMT 0 2.0

Air frost 0 0.8

Ground frost 0 4.5

0.2mm precipitator 13 14.0

1.0mm precipitator 11 11.4

5.0mm precipitation 3 4.6

No sunshine 5 6.6

Slightly drier than normal and a little on the dull side.

However, it was a warmer-than-average month without any ground frosts.

Key
 DD: date
 07GMT observations
 N cloud cover (oktas, 9=obscured) dd wind direction (degrees/10
 ff wind speed (knots)
 ww present weather code
 2 sky not changing 25 recent rain shower
 3 cloud increasing 45 fog
 10 mist 58 slight rain and drizzle
 11 shallow fog 60 intermittent slight rain
 21 recent rain 61 continuous slight rain
 VV visibility (00-50 metres/100, 94 very poor, 95 poor, 96 moderate, 97 good)
 Soil temperatures are for 0700GMT beneath bare soil (5, 10, 20cm) or grass (30, 50, 100cm)

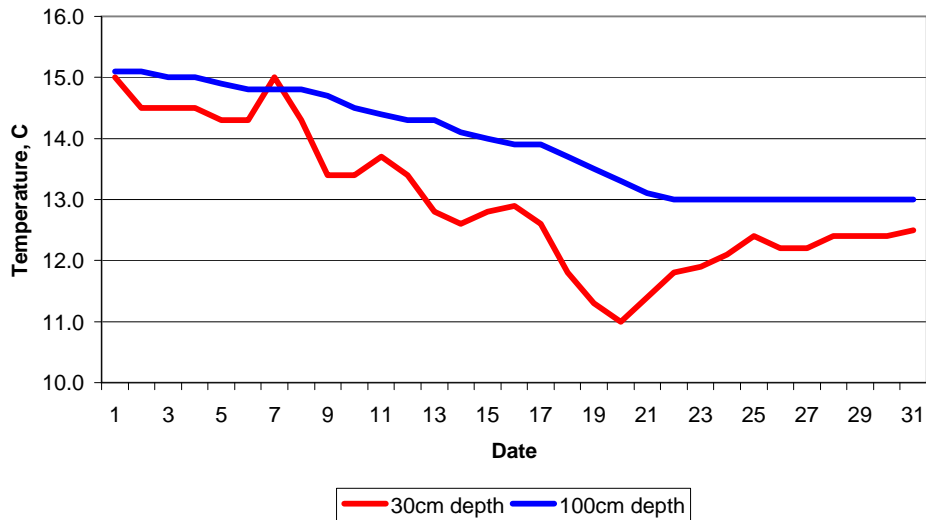
09GMT observations
 Temp temperature (degC) RH relative humidity (%)
 E state of ground (00 dry, 10 moist, 20 wet, 90 cracked) SS snow depth (cm)
 Press air pressure (mb)

24 hour readings
 Max maximum temperature (degC) beginning 09GMT Min minimum temperature (degC) ending 09GMT
 Gmin grass minimum temperature (degC) ending 09GMT Rain precipitation beginning 09GMT
 Sun sunshine (hours) sunrise-sunset Rain hrs hours of rainfall (>0.1mm/h) 09-09GMT
 Fr. Hrs hours of air frost (00-24GMT) Pch Evap Piche evaporation (ml) beginning 09GMT

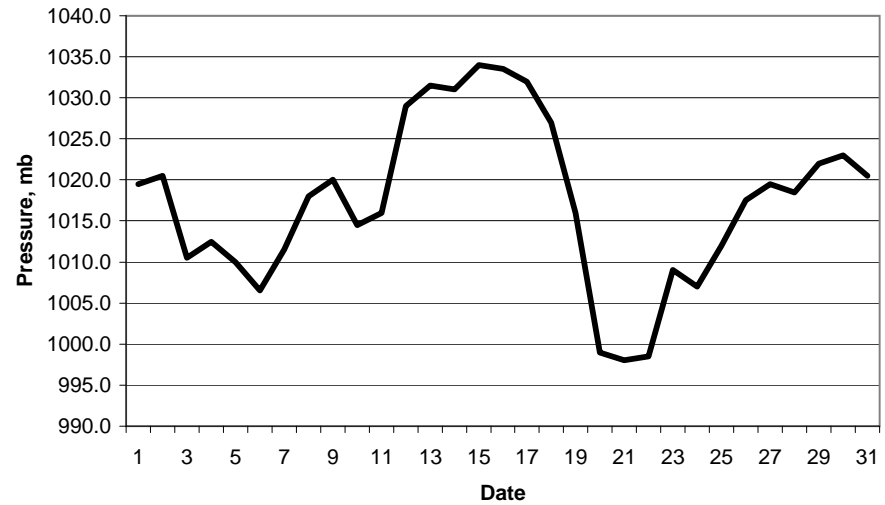
Days with
 S snow(5) or sleet(1) falling L 50% snow cover at 09GMT H hail or ice pellets
 T thunder heard G gale F fog at 09GMT

This information (and data for earlier months) is also available at <http://www.met.rdg.ac.uk/~brugge>

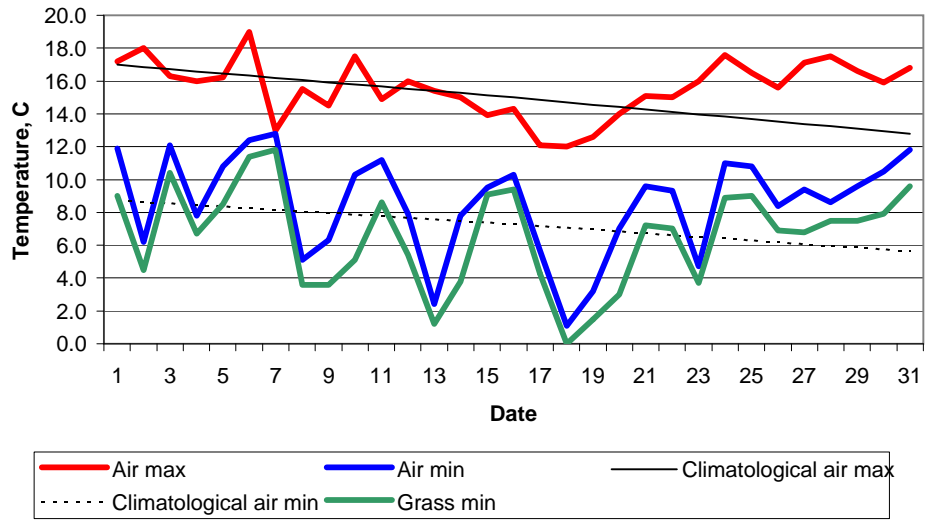
Daily soil temperatures, 0700GMT



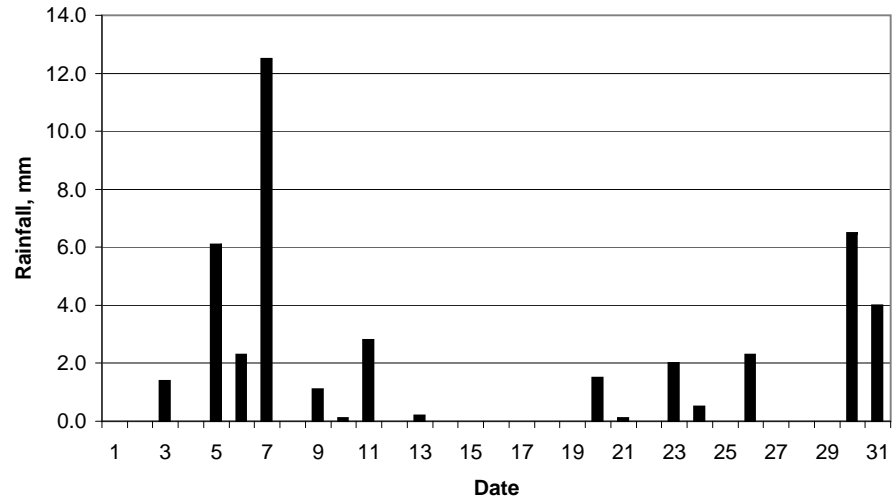
Mean sea level pressure, 0900GMT



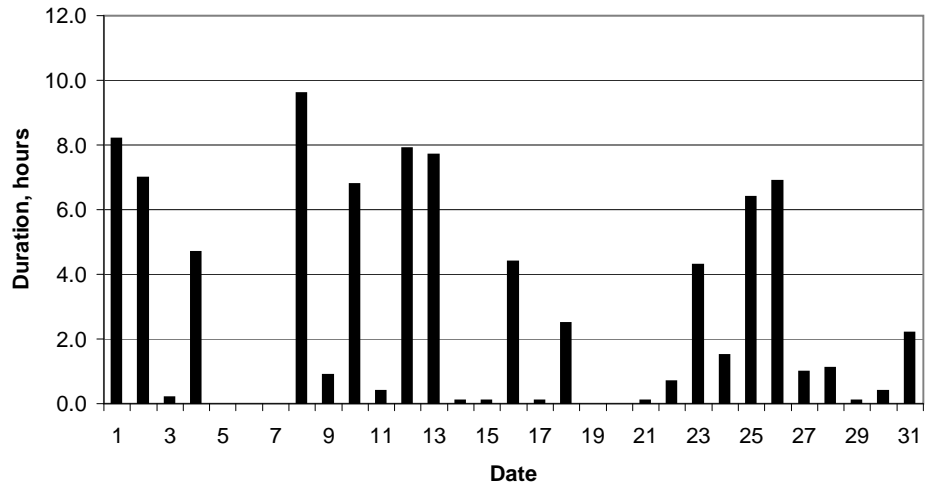
Daily temperature extremes



Daily rainfall



Daily sunshine



Daily evaporation

