

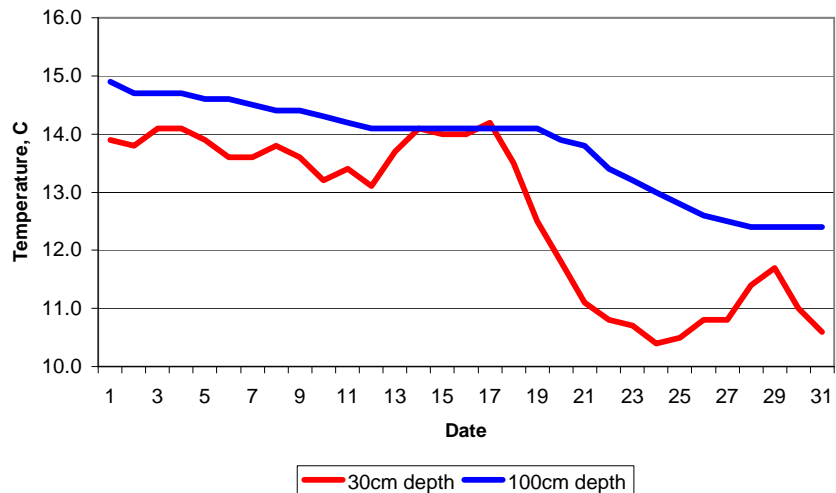
MAIDENHEAD METEOROLOGICAL OBSERVATIONS FOR OCTOBER 2007

| | | 0900GMT | | | | | Temperature | | | | | Soil temperatures (depth in cm) | | | | | | | | Rain | Fr. | Pch | | | | | | | | | | | | | | | | | |
|---|---|---------|----|----|----|------|-------------|------|------|------|------|---------------------------------|------|------|------|------|------|-------|------|------|-----|-----|---|------|-----|------|--------|--------|-----|------|----------------------------|--------|-----|--------|------|-----|------|--|--|
| DD | N | dd | ff | ww | VV | Temp | RH | Max | Min | Gmin | 5 | 10 | 20 | 30 | 50 | 100 | E | SS | Rain | Sun | S | L | H | T | G | F | Press | hrs | hrs | Evap | | | | | | | | | |
| 01 | 8 | 09 | 05 | 02 | 97 | 13.8 | 90 | 17.5 | 8.7 | 9.4 | 13.4 | 13.1 | 14.0 | 13.9 | 14.3 | 14.9 | 10 | 0 | 2.3 | 0.0 | 0 | 0 | 0 | 0 | 0 | 0 | 1022.5 | 3.7 | 0.0 | 0.5 | Number of | | | | | | | | |
| 02 | 8 | 05 | 05 | 02 | 97 | 13.4 | 90 | 15.1 | 12.3 | 11.9 | 12.8 | 12.9 | 13.6 | 13.8 | 14.1 | 14.7 | 10 | 0 | 1.5 | 0.0 | 0 | 0 | 0 | 0 | 0 | 0 | 1022.0 | 2.0 | 0.0 | 0.5 | days with | | | | | | | | |
| 03 | 8 | 36 | 02 | 10 | 95 | 13.8 | 95 | 17.2 | 12.9 | 12.2 | 13.5 | 13.6 | 13.9 | 14.1 | 14.1 | 14.7 | 10 | 0 | 0.0 | 0.7 | 0 | 0 | 0 | 0 | 0 | 0 | 1019.5 | 0.0 | 0.0 | 0.4 | 2007 | normal | | | | | | | |
| 04 | 6 | 22 | 02 | 02 | 10 | 14.5 | 96 | 19.0 | 10.8 | 9.1 | 12.8 | 13.3 | 13.8 | 14.1 | 14.1 | 14.7 | 10 | 0 | 0.0 | 9.2 | 0 | 0 | 0 | 0 | 0 | 0 | 1022.5 | 0.0 | 0.0 | 1.1 | Snow/sleet falling | | | | | | | | |
| 05 | 1 | 00 | 00 | 02 | 97 | 12.9 | 90 | 18.9 | 4.9 | 4.5 | 13.4 | 11.2 | 13.0 | 13.9 | 14.1 | 14.6 | 10 | 0 | 0.0 | 10.0 | 0 | 0 | 0 | 0 | 0 | 0 | 1027.5 | 0.0 | 0.0 | 0.9 | 0 | 0.0 | | | | | | | |
| 06 | 8 | 06 | 02 | 03 | 97 | 14.4 | 84 | 17.2 | 9.7 | 7.6 | 12.4 | 12.4 | 13.0 | 13.6 | 14.2 | 14.6 | 10 | 0 | 0.0 | 1.0 | 0 | 0 | 0 | 0 | 0 | 0 | 1025.0 | 0.0 | 0.0 | 1.5 | 50% snow cover 09GMT | | | | | | | | |
| 07 | 7 | 08 | 02 | 02 | 96 | 12.5 | 89 | 17.8 | 7.1 | 6.0 | 11.7 | 12.1 | 13.0 | 13.6 | 14.0 | 14.5 | 10 | 0 | 0.0 | 0.7 | 0 | 0 | 0 | 0 | 0 | 0 | 1023.0 | 0.0 | 0.0 | 0.7 | 0 | 0.0 | | | | | | | |
| 08 | 8 | 05 | 02 | 02 | 97 | 11.9 | 77 | 14.1 | 11.3 | 10.6 | 12.7 | 12.8 | 13.2 | 13.8 | 14.0 | 14.4 | 10 | 0 | 1.8 | 0.0 | 0 | 0 | 0 | 0 | 0 | 0 | 1025.5 | 1.6 | 0.0 | 0.7 | Hail or ice pellets | | | | | | | | |
| 09 | 8 | 13 | 05 | 21 | 96 | 11.8 | 94 | 15.0 | 7.8 | 7.0 | 12.1 | 12.2 | 13.5 | 13.6 | 13.9 | 14.4 | 10 | 0 | 15.6 | 0.0 | 0 | 0 | 0 | 0 | 0 | 0 | 1023.5 | 0.8 | 0.0 | 0.5 | 0 | 0.2 | | | | | | | |
| 10 | 8 | 31 | 09 | 02 | 96 | 14.4 | 85 | 17.0 | 11.6 | 9.3 | 12.1 | 12.3 | 13.0 | 13.2 | 13.6 | 14.3 | 10 | 0 | 0.0 | 3.4 | 0 | 0 | 0 | 0 | 0 | 0 | 1025.5 | 0.0 | 0.0 | 1.1 | Thunder | | | | | | | | |
| 11 | 9 | 23 | 02 | 45 | 01 | 8.1 | 99 | 17.6 | 6.2 | 6.0 | 10.7 | 11.2 | 12.8 | 13.4 | 13.6 | 14.2 | 10 | 0 | 0.0 | 5.1 | 0 | 0 | 0 | 0 | 0 | 1 | 1031.0 | 0.0 | 0.0 | 0.3 | 0 | 0.5 | | | | | | | |
| 12 | 8 | 33 | 02 | 02 | 95 | 14.1 | 94 | 17.0 | 8.1 | 7.7 | 12.3 | 12.7 | 12.8 | 13.1 | 13.5 | 14.1 | 10 | 0 | 0.1 | 3.6 | 0 | 0 | 0 | 0 | 0 | 0 | 1026.5 | 0.1 | 0.0 | 0.3 | Gale | | | | | | | | |
| 13 | 8 | 18 | 02 | 02 | 96 | 16.4 | 91 | 19.4 | 14.1 | 11.1 | 14.2 | 13.9 | 13.9 | 13.7 | 13.5 | 14.1 | 10 | 0 | 0.0 | 2.6 | 0 | 0 | 0 | 0 | 0 | 0 | 1027.0 | 0.0 | 0.0 | 1.0 | 0 | 0.2 | | | | | | | |
| 14 | 8 | 14 | 02 | 02 | 96 | 13.9 | 90 | 18.9 | 12.6 | 12.1 | 13.4 | 13.6 | 14.1 | 14.1 | 13.5 | 14.1 | 10 | 0 | 0.0 | 4.6 | 0 | 0 | 0 | 0 | 0 | 0 | 1021.0 | 0.0 | 0.0 | 0.8 | Fog at 09GMT | | | | | | | | |
| 15 | 8 | 18 | 02 | 02 | 96 | 11.0 | 98 | 17.2 | 9.2 | 7.2 | 12.7 | 12.8 | 13.8 | 14.0 | 14.1 | 14.1 | 10 | 0 | 0.6 | 2.9 | 0 | 0 | 0 | 0 | 0 | 0 | 1015.0 | 1.0 | 0.0 | 1.0 | 1 | 2.0 | | | | | | | |
| 16 | 8 | 23 | 09 | 21 | 97 | 15.7 | 92 | 17.1 | 11.0 | 8.9 | 14.0 | 13.9 | 14.0 | 14.0 | 14.1 | 14.1 | 10 | 0 | 11.1 | 0.2 | 0 | 0 | 0 | 0 | 0 | 0 | 1014.0 | 10.0 | 0.0 | 0.7 | Air frost | | | | | | | | |
| 17 | 1 | 32 | 13 | 01 | 96 | 11.7 | 81 | 15.0 | 9.5 | 8.8 | 12.8 | 13.3 | 14.1 | 14.2 | 14.1 | 14.1 | 10 | 0 | 0.0 | 8.1 | 0 | 0 | 0 | 0 | 0 | 0 | 1020.0 | 0.0 | 0.0 | 1.3 | 0 | 0.8 | | | | | | | |
| 18 | 1 | 27 | 02 | 02 | 97 | 9.9 | 96 | 14.6 | 3.2 | 0.9 | 9.4 | 10.2 | 12.2 | 13.5 | 13.8 | 14.1 | 10 | 0 | 0.0 | 8.9 | 0 | 0 | 0 | 0 | 0 | 0 | 1035.0 | 0.0 | 0.0 | 1.0 | Ground frost | | | | | | | | |
| 19 | 1 | 00 | 00 | 02 | 97 | 9.6 | 99 | 15.6 | 1.1 | 0.0 | 7.9 | 8.9 | 11.0 | 12.5 | 13.3 | 14.1 | 10 | 0 | 0.0 | 7.0 | 0 | 0 | 0 | 0 | 0 | 0 | 1036.5 | 0.0 | 0.0 | 1.4 | 2 | 4.5 | | | | | | | |
| 20 | 0 | 05 | 02 | 02 | 97 | 8.0 | 83 | 16.2 | 2.2 | 0.0 | 7.8 | 8.4 | 10.4 | 11.8 | 12.8 | 13.9 | 10 | 0 | 0.0 | 8.6 | 0 | 0 | 0 | 0 | 0 | 0 | 1037.5 | 0.0 | 0.0 | 1.4 | 0.2mm precipitation | | | | | | | | |
| 21 | 0 | 04 | 02 | 02 | 97 | 6.1 | 91 | 15.1 | 0.2 | -1.1 | 7.1 | 7.8 | 9.9 | 11.1 | 12.3 | 13.8 | 10 | 0 | 0.0 | 9.4 | 0 | 0 | 0 | 0 | 0 | 0 | 1033.0 | 0.0 | 0.0 | 1.5 | 8 | 14.0 | | | | | | | |
| 22 | 5 | 07 | 02 | 02 | 96 | 5.9 | 96 | 13.5 | 1.5 | 0.1 | 7.9 | 8.0 | 9.5 | 10.8 | 12.1 | 13.4 | 10 | 0 | 0.0 | 0.1 | 0 | 0 | 0 | 0 | 0 | 0 | 1025.0 | 0.0 | 0.0 | 0.9 | 1.0mm precipitation | | | | | | | | |
| 23 | 6 | 04 | 05 | 02 | 96 | 8.0 | 87 | 13.7 | 3.6 | -1.0 | 7.2 | 7.8 | 9.0 | 10.7 | 12.1 | 13.2 | 10 | 0 | 0.0 | 8.7 | 0 | 0 | 0 | 0 | 0 | 0 | 1026.5 | 0.0 | 0.0 | 1.8 | 6 | 11.4 | | | | | | | |
| 24 | 8 | 05 | 05 | 61 | 94 | 9.0 | 79 | 10.2 | 1.7 | 0.0 | 7.7 | 7.8 | 9.1 | 10.4 | 11.9 | 13.0 | 10 | 0 | 0.0 | 1.5 | 0 | 0 | 0 | 0 | 0 | 0 | 1027.5 | 0.0 | 0.0 | 1.2 | 5.0mm precipitation | | | | | | | | |
| 25 | 8 | 03 | 05 | 02 | 96 | 10.2 | 86 | 10.7 | 4.5 | 4.4 | 9.5 | 9.4 | 10.0 | 10.5 | 11.8 | 12.8 | 10 | 0 | 0.4 | 0.0 | 0 | 0 | 0 | 0 | 0 | 0 | 1026.0 | 0.8 | 0.0 | 0.4 | 2 | 4.6 | | | | | | | |
| 26 | 8 | 04 | 02 | 10 | 95 | 9.8 | 95 | 11.0 | 9.2 | 8.9 | 9.9 | 10.0 | 10.5 | 10.8 | 11.2 | 12.6 | 10 | 0 | 0.0 | 0.0 | 0 | 0 | 0 | 0 | 0 | 0 | 1024.0 | 0.0 | 0.0 | 0.2 | No sunshine | | | | | | | | |
| 27 | 4 | 18 | 02 | 01 | 95 | 9.5 | 97 | 15.1 | 6.8 | 4.9 | 9.1 | 9.3 | 10.0 | 10.8 | 11.2 | 12.5 | 10 | 0 | 0.1 | 0.0 | 0 | 0 | 0 | 0 | 0 | 0 | 1026.0 | 0.1 | 0.0 | 1.1 | 8 | 6.6 | | | | | | | |
| 28 | 8 | 22 | 09 | 02 | 97 | 15.1 | 85 | 15.1 | 7.5 | 4.9 | 12.3 | 11.9 | 11.6 | 11.4 | 11.3 | 12.4 | 10 | 0 | 3.0 | 0.0 | 0 | 0 | 0 | 0 | 0 | 0 | 1016.5 | 4.1 | 0.0 | 0.3 | Overall temperatures were | | | | | | | | |
| 29 | 4 | 22 | 05 | 11 | 94 | 11.1 | 96 | 14.1 | 7.9 | 5.4 | 10.4 | 10.7 | 11.4 | 11.7 | 11.9 | 12.4 | 10 | 0 | 0.0 | 5.9 | 0 | 0 | 0 | 0 | 0 | 0 | 1012.5 | 0.0 | 0.0 | 1.1 | close to average although | | | | | | | | |
| 30 | 1 | 27 | 02 | 02 | 97 | 11.0 | 98 | 14.1 | 5.0 | 2.5 | 8.7 | 9.0 | 10.3 | 11.0 | 11.7 | 12.4 | 10 | 0 | 0.0 | 9.0 | 0 | 0 | 0 | 0 | 0 | 0 | 1022.0 | 0.0 | 0.0 | 1.1 | the month had the first | | | | | | | | |
| 31 | 8 | 21 | 02 | 03 | 96 | 9.5 | 98 | 13.7 | 3.6 | 2.0 | 8.4 | 8.4 | 9.5 | 10.6 | 11.5 | 12.4 | 10 | 0 | 0.0 | 1.1 | 0 | 0 | 0 | 0 | 0 | 0 | 1030.0 | 0.0 | 0.0 | 0.8 | October ground frost since | | | | | | | | |
| Monthly means | | | | | | | 11.5 | 91 | 15.6 | 7.3 | 5.8 | 11.0 | 11.1 | 12.1 | 12.6 | 13.1 | 13.8 | | | | | | | | | | | 1024.8 | | | | | | | | | | | |
| Monthly totals | | | | | | | | | | | | | | | | | 36.5 | 112.3 | | | | | | 24.2 | 0.0 | 27.5 | | | | | | | | | | | | | |
| Highest values | | | | | | | 16.4 | 19.4 | 14.1 | 12.2 | 14.2 | 13.9 | 14.1 | 14.2 | 14.3 | 14.9 | | | | | | | | | | | 15.6 | 10.0 | | | 10.0 | 0.0 | 1.8 | | | | | | |
| Lowest values | | | | | | | 5.9 | 77 | 10.2 | 0.2 | -1.1 | 7.1 | 7.8 | 9.0 | 10.4 | 11.2 | 12.4 | | | | | | | | | | | | | | | | | | | | | | |
| 1971-2000 monthly climatological averages | | | | | | | 88 | 15.0 | 7.3 | 4.9 | 9.9 | 10.5 | 11.5 | 12.2 | 12.6 | 13.2 | | | | | | | | | | | 68.7 | 100.4 | | | | | | 1015.1 | 51.8 | 4.8 | 35.6 | | |

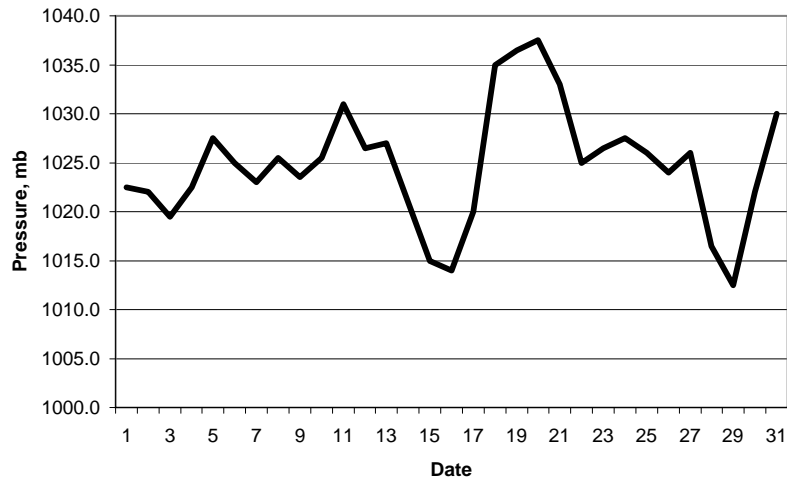
Number of days with 2007 normal
 Snow/sleet falling 0 0.0
 50% snow cover 09GMT 0 0.0
 Hail or ice pellets 0 0.2
 Thunder 0 0.5
 Gale 0 0.2
 Fog at 09GMT 1 2.0
 Air frost 0 0.8
 Ground frost 2 4.5
 0.2mm precipitation 8 14.0
 1.0mm precipitation 6 11.4
 5.0mm precipitation 2 4.6
 No sunshine 8 6.6
 Overall temperatures were close to average although the month had the first October ground frost since 2003. Mean sea level pressure was the highest for October since 1985 and these anticyclonic conditions meant little rain and light winds. In fact, most of the rain fell on just two days.

Key
 DD: date
 07GMT observations
 N cloud cover (oktas, 9=obscured) dd wind direction (degrees/10)
 ff wind speed (knots)
 ww present weather code
 2 sky not changing 25 recent rain shower
 3 cloud increasing 45 fog
 10 mist 58 slight rain and drizzle
 11 shallow fog 60 intermittent slight rain
 21 recent rain 61 continuous slight rain
 VV visibility (00-50 metres/100, 94 very poor, 95 poor, 96 moderate, 97 good)
 Soil temperatures are for 0700GMT beneath bare soil (5, 10, 20cm) or grass (30, 50, 100cm)
 09GMT observations
 Temp temperature (degC) RH relative humidity (%)
 E state of ground (00 dry, 10 moist, 20 wet, 90 cracked) SS snow depth (cm)
 Press air pressure (mb)
 24 hour readings
 Max maximum temperature (degC) beginning 09GMT Min minimum temperature (degC) ending 09GMT
 Gmin grass minimum temperature (degC) ending 09GMT Rain precipitation beginning 09GMT
 Sun sunshine (hours) sunrise-sunset Rain hrs hours of rainfall (>0.1mm/h) 09-09GMT
 Fr. Hrs hours of air frost (00-24GMT) Pch Evap Piche evaporation (ml) beginning 09GMT
 Days with
 S snow(5) or sleet(1) falling L 50% snow cover at 09GMT H hail or ice pellets
 T thunder heard G gale F fog at 09GMT
 This information (and data for earlier months) is also available at <http://www.met.rdg.a.uk/~brugge>

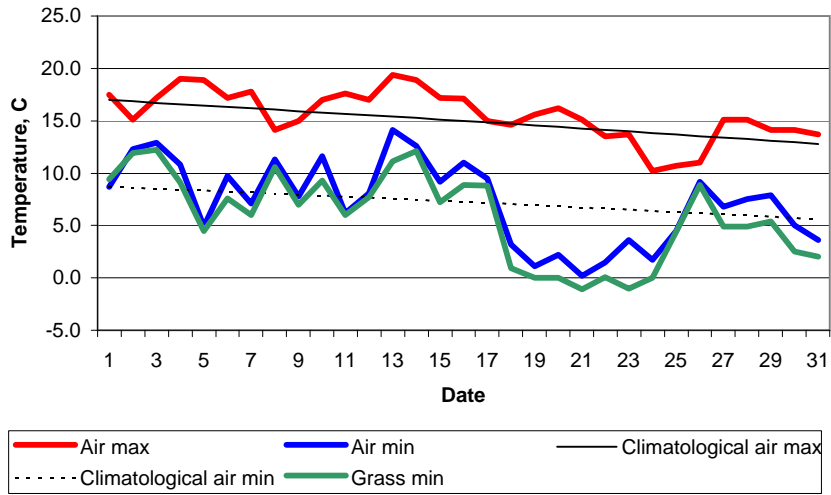
Daily soil temperatures, 0700GMT



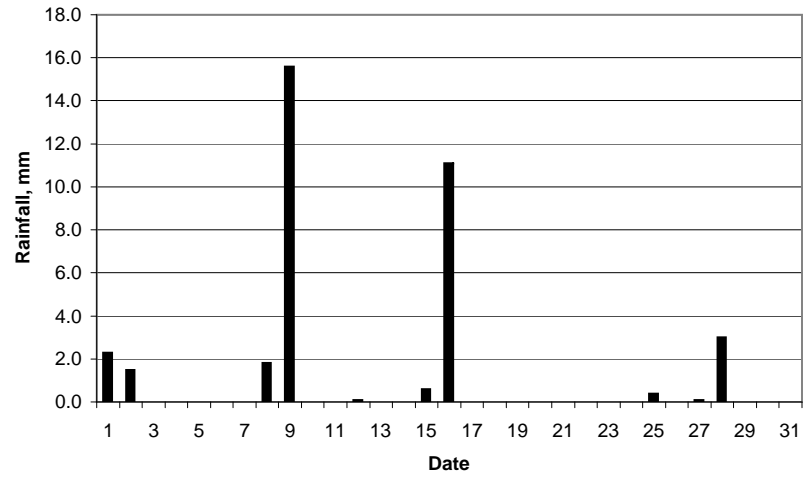
Mean sea level pressure, 0900GMT



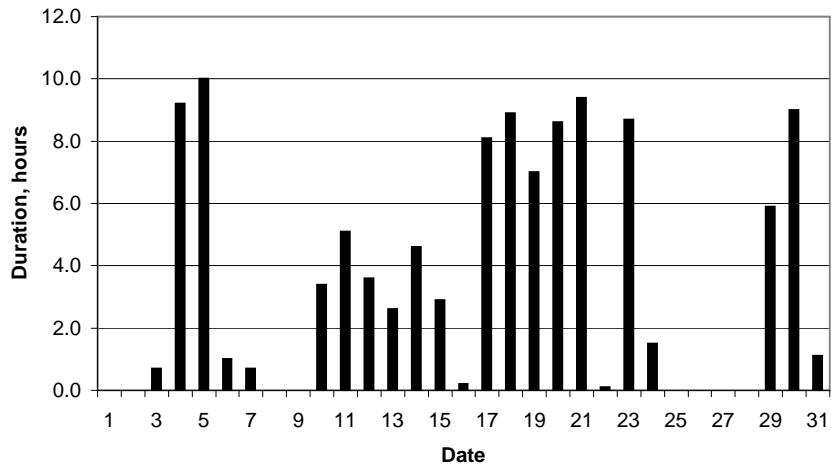
Daily temperature extremes



Daily rainfall



Daily sunshine



Daily evaporation

