

MAIDENHEAD METEOROLOGICAL OBSERVATIONS FOR OCTOBER 2006

DD	N	dd	ff	ww	VV	0900GMT		Temperature			Soil temperatures (depth in cm)						E	SS	Rain	Sun	S	L	H	T	G	F	Press	Rain hrs	Fr. hrs	Pch Evap		
						Temp	RH	Max	Min	Gmin	5	10	20	30	50	100																
01	7	18	05	25	97	18.1	80	18.3	12.7	10.3	15.6	15.8	16.5	16.9	16.9	10	0	2.4	3.6	0	0	0	0	0	0	0	1003.0	2.0	0.0	1.4	Number of days with 2006 normal Snow/sleet falling 0 0.0 50% snow cover 09GMT 0 0.0 Hail or ice pellets 0 0.2 Thunder 1 0.5 Gale 0 0.2 Fog at 09GMT 1 2.0 Air frost 0 0.8 Ground frost 0 4.5 0.2mm precipitation 16 14.0 1.0mm precipitation 13 11.4 5.0mm precipitation 8 4.6 No sunshine 5 6.6 The warmest October since at least 1953, with very little temperature variation throughout the month. The third consecutive October without any ground frost. A wet month, with heavy rain in the evening of the 9th causing local flooding. Soil temperatures at 30cm and 1m averaged out at the warmest in October since before 1971.	
02	1	22	02	02	97	14.0	87	19.1	12.7	10.0	13.9	14.6	15.8	16.7	16.8	10	0	1.0	5.8	0	0	0	0	0	0	1003.5	1.4	0.0	0.9			
03	0	23	02	02	96	12.0	98	17.7	7.5	5.9	12.3	13.4	15.1	16.1	16.3	16.7	10	0	tr	6.1	0	0	0	0	0	0	1003.0	0.0	0.0	1.7		
04	0	27	02	02	07	11.4	76	18.1	7.2	4.6	11.9	12.9	14.7	16.0	16.0	16.6	10	0	0.0	8.9	0	0	0	0	0	0	1012.0	0.0	0.0	2.0		
05	8	22	05	03	97	10.7	90	16.5	6.3	4.9	11.8	12.3	14.6	15.4	15.8	16.4	10	0	9.9	0.0	0	0	0	0	0	0	1015.0	11.4	0.0	0.4		
06	8	21	05	61	97	16.5	95	17.7	10.7	9.1	14.9	14.8	15.0	15.1	15.4	16.2	10	0	4.9	1.1	0	0	0	0	0	0	1005.0	1.9	0.0	1.3		
07	0	27	09	02	97	11.8	70	17.7	9.5	6.7	12.1	12.7	14.4	15.1	15.4	16.0	10	0	0.0	10.0	0	0	0	0	0	0	1015.5	0.0	0.0	1.6		
08	7	18	05	02	96	12.5	95	18.3	7.0	4.9	11.6	11.1	13.5	14.8	15.2	15.9	10	0	0.0	7.3	0	0	0	0	0	0	1019.5	0.0	0.0	1.4		
09	8	18	05	02	97	17.4	90	21.9	12.5	9.4	14.3	14.4	14.7	14.9	15.2	15.9	10	0	27.3	3.5	0	0	0	0	0	0	1014.0	3.6	0.0	0.8		
10	8	14	02	02	94	18.2	96	21.2	15.0	12.9	15.6	15.7	15.8	15.5	15.3	15.8	10	0	5.4	1.2	0	0	0	0	0	0	1018.0	4.8	0.0	0.5		
11	8	15	02	21	95	16.0	96	18.2	14.7	11.1	15.4	15.5	15.7	15.8	15.6	15.6	10	0	12.8	0.1	0	0	0	1	0	0	1008.0	2.9	0.0	0.3		
12	4	12	02	03	94	10.5	97	19.1	7.8	5.5	12.7	13.6	15.0	15.7	15.7	15.7	10	0	tr	9.7	0	0	0	0	0	0	1021.0	0.0	0.0	1.0		
13	0	00	00	47	04	13.5	96	19.0	10.5	5.5	13.4	13.8	14.6	15.3	15.6	15.6	10	0	tr	5.0	0	0	0	0	0	0	1031.0	0.0	0.0	0.7		
14	0	00	00	45	03	13.5	96	18.5	8.3	5.5	12.3	12.8	14.1	15.0	15.1	15.6	10	0	0.0	2.1	0	0	0	0	0	1	1029.5	0.0	0.0	1.3		
15	8	09	09	02	96	14.7	84	18.9	13.5	10.6	13.9	14.0	14.5	15.0	15.1	15.5	10	0	0.0	6.8	0	0	0	0	0	0	1027.5	0.0	0.0	1.6		
16	8	08	02	10	94	11.4	96	20.4	11.4	9.2	13.1	13.5	14.4	15.0	15.2	15.5	10	0	tr	6.1	0	0	0	0	0	0	1021.0	0.0	0.0	1.2		
17	6	05	02	10	94	13.0	97	17.2	10.2	7.4	12.4	12.9	14.3	14.8	15.1	15.3	10	0	tr	0.1	0	0	0	0	0	0	1010.0	0.0	0.0	0.7		
18	8	19	02	02	94	14.9	96	19.4	13.0	9.4	13.6	14.2	14.4	14.6	14.7	15.3	10	0	6.4	3.6	0	0	0	0	0	0	1007.0	1.5	0.0	0.8		
19	8	17	13	58	96	16.2	89	17.5	14.9	12.0	11.7	12.2	14.9	15.0	14.8	15.2	10	0	13.0	3.4	0	0	0	0	0	0	991.5	8.4	0.0	1.3		
20	8	18	13	60	97	16.0	94	19.0	13.1	12.5	13.9	14.0	14.1	15.0	14.9	15.2	10	0	0.7	4.9	0	0	0	0	0	0	990.0	1.2	0.0	0.9		
21	8	20	05	60	96	15.7	97	18.5	12.6	9.7	13.8	13.8	14.4	14.9	14.8	15.1	10	0	1.1	5.5	0	0	0	0	0	0	996.0	0.5	0.0	1.9		
22	8	21	02	02	97	13.8	86	15.5	12.0	8.2	12.3	12.7	13.9	14.5	14.8	15.1	10	0	8.5	0.0	0	0	0	0	0	0	998.0	6.3	0.0	0.4		
23	8	22	02	02	97	12.2	95	14.1	11.3	10.1	13.3	13.6	14.2	14.5	14.6	15.1	10	0	8.7	1.6	0	0	0	0	0	0	995.0	4.8	0.0	0.5		
24	8	36	09	02	97	13.0	94	15.9	11.3	10.1	12.8	13.1	13.2	14.4	14.5	15.0	10	0	0.7	4.9	0	0	0	0	0	0	993.5	1.2	0.0	0.9		
25	8	22	02	60	97	12.0	94	16.9	6.6	4.2	11.2	11.6	13.0	13.6	14.2	15.0	10	0	2.1	0.0	0	0	0	0	0	0	1005.5	2.0	0.0	0.9		
26	7	22	13	02	97	16.9	87	18.9	10.4	9.5	13.8	13.8	13.6	13.7	13.7	14.8	10	0	0.0	2.4	0	0	0	0	0	0	999.5	0.0	0.0	1.2		
27	5	35	02	02	97	8.7	93	14.6	4.9	2.0	9.9	10.6	12.4	13.5	13.8	14.7	10	0	0.3	3.6	0	0	0	0	0	0	1020.5	0.5	0.0	1.3		
28	8	22	02	02	96	13.5	95	17.1	8.7	3.0	11.7	12.2	12.7	13.3	13.6	14.5	10	0	0.0	0.0	0	0	0	0	0	0	1022.0	0.0	0.0	1.0		
29	4	27	02	02	97	13.4	94	16.6	12.3	9.0	13.8	13.4	13.8	14.0	13.7	14.4	10	0	0.0	8.2	0	0	0	0	0	0	1024.5	0.0	0.0	0.8		
30	4	18	02	02	97	12.9	93	16.4	9.8	6.6	12.3	12.4	13.0	13.5	13.8	14.4	10	0	0.1	0.0	0	0	0	0	0	0	1020.5	0.1	0.0	0.5		
31	3	21	19	02	97	13.0	58	15.0	12.9	9.0	12.9	13.4	13.6	13.9	13.7	14.4	10	0	tr	4.8	0	0	0	0	0	0	1008.5	0.0	0.0	2.1		
Monthly means						13.8	90	17.8	10.7	8.0	13.0	13.4	14.3	14.9	15.0	15.5												1010.6				
Monthly totals																				105.3	120.3							54.5	0.0	33.3		
Highest values						18.2		21.9	15.0	12.9	15.6	15.8	16.5	16.9	16.9	16.9			27.3	10.0								11.4	0.0	2.1		
Lowest values						8.7	58	14.1	4.9	2.0	9.9	10.6	12.4	13.3	13.6	14.4																
1971-2000 monthly climatological averages						88	15.0	7.3	4.9	9.9	10.5	11.5	12.2	12.6	13.2			68.7	100.4										1015.1	51.8	4.8	35.6

Key

DD: date

07GMT observations

N	cloud cover (oktas, 9=obscured)	dd	wind direction (degrees/10)
ff	wind speed (knots)		
ww	present weather code		
2	sky not changing	45	fog
3	cloud increasing	47	thickening fog
10	mist	58	slight rain and drizzle
21	recent rain	60	intermittent slight rain
25	recent rain shower	61	continuous slight rain
VV	visibility (00-50 metres/100, 94 very poor, 95 poor, 96 moderate, 97 good)		

Soil temperatures are for 0700GMT beneath bare soil (5, 10, 20cm) or grass (30, 50, 100cm)

09GMT observations

Temp	temperature (degC)	RH	relative humidity (%)
E	state of ground (00 dry, 10 moist, 20 wet, 90 cracked)	SS	snow depth (cm)
Press	air pressure (mb)		

24 hour readings

Max	maximum temperature (degC) beginning 09GMT	Min	minimum temperature (degC) ending 09GMT
Gmin	grass minimum temperature (degC) ending 09GMT	Rain	precipitation beginning 09GMT
Sun	sunshine (hours) sunrise-sunset	Rain hrs	hours of rainfall (>0.1mm/h) 09-09GMT
Fr. Hrs	hours of air frost (00-24GMT)	Pch Evap	Piche evaporation (ml) beginning 09GMT

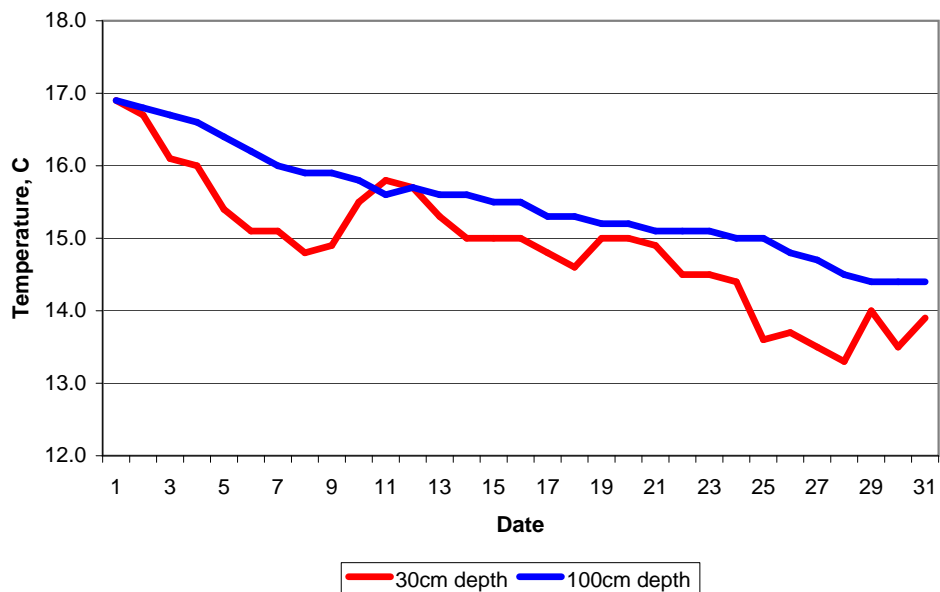
Days with

S	snow(5) or sleet(1) falling	L	50% snow cover at 09GMT	H	hail or ice pellets
T	thunder heard	G	gale	F	fog at 09GMT

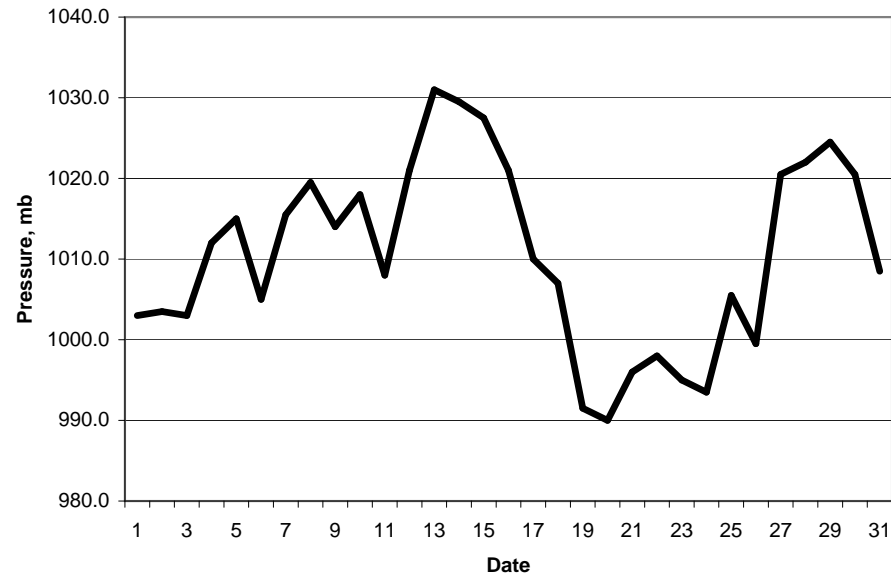
This information (and data for earlier months) is also available at

<http://www.met.rdg.a.uk/~brugge>

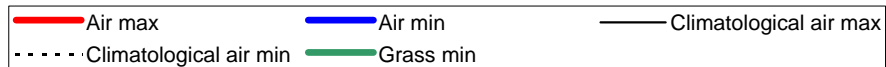
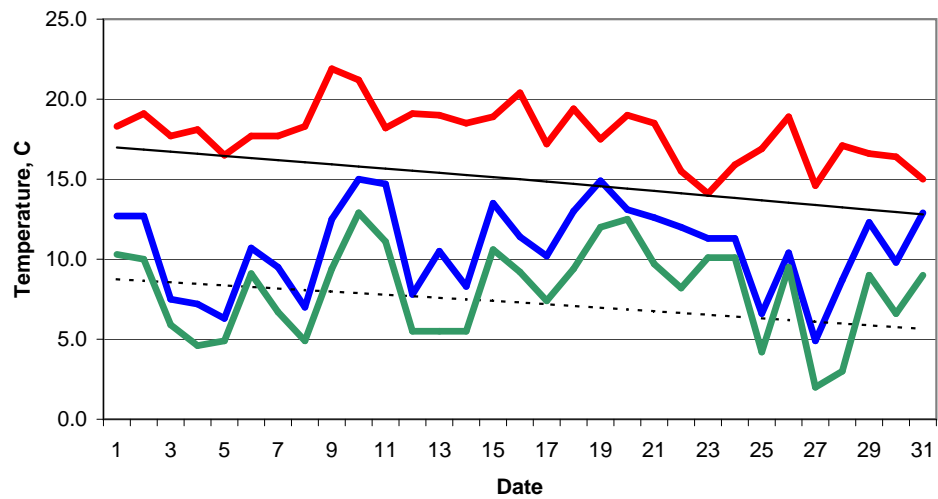
Daily soil temperatures, 0700GMT



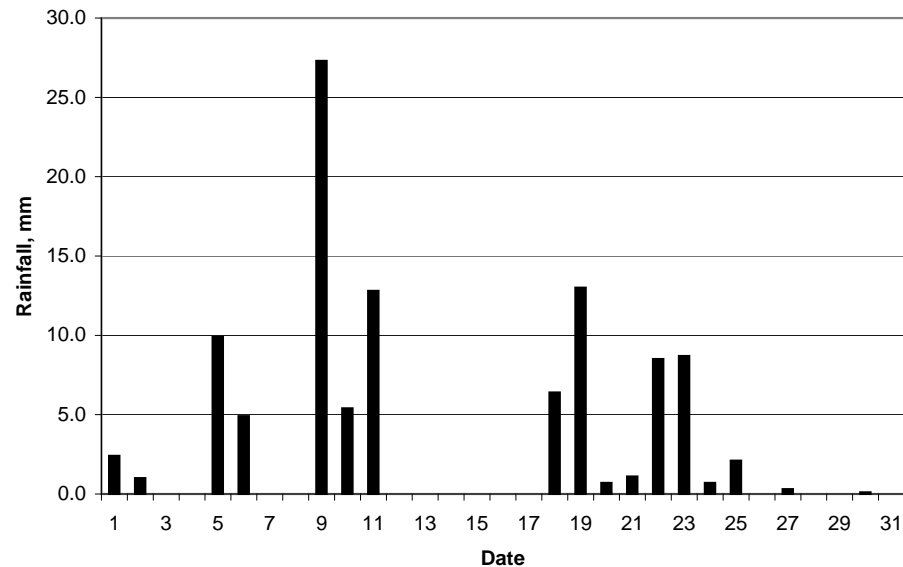
Mean sea level pressure, 0900GMT



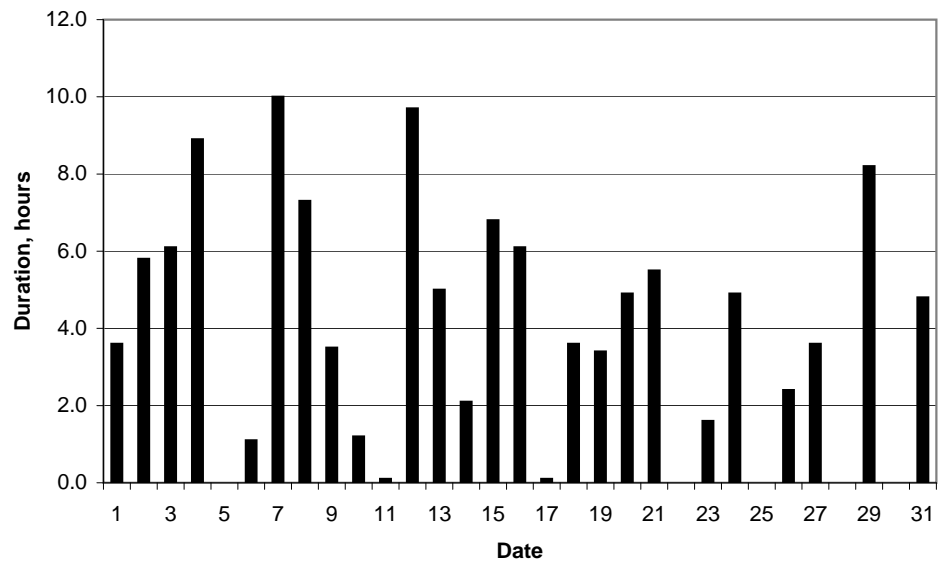
Daily temperature extremes



Daily rainfall



Daily sunshine



Daily evaporation

