

MAIDENHEAD METEOROLOGICAL OBSERVATIONS FOR OCTOBER 2004

0900GMT		Temperature		Soil temperatures (depth in cm)																					Rain	Fr.	Pch								
DD	N	dd	ff	ww	VV	Temp	RH	Max	Min	Gmin	5	10	20	30	50	100	E	SS	Rain	Sun	S	L	H	T	G	F	Press	hrs	hrs	Evap					
01	9	00	00	47	05	9.4	98	15.2	8.4	7.1	11.6	12.6	13.9	15.0	15.3	15.1	10	0	7.8	0.2	0	0	0	1	0	1	1020.0	2.1	0.0	0.8	Number of				
02	6	22	02	02	96	12.4	97	17.4	9.2	6.7	11.5	12.1	13.5	14.5	14.9	15.1	10	0	9.2	3.6	0	0	0	0	0	0	1018.5	3.3	0.0	0.6	days with				
03	8	22	02	02	96	11.5	95	15.3	8.5	6.9	11.3	11.8	13.2	14.1	14.6	15.1	10	0	14.4	0.1	0	0	0	0	0	0	1019.5	11.7	0.0	0.4	2004 normal				
04	8	18	19	02	96	12.5	90	16.1	11.5	9.9	13.8	14.3	14.0	14.2	14.6	15.1	10	0	tr	6.1	0	0	0	0	0	0	1006.5	0.0	0.0	1.4	Snow/sleet falling				
05	7	08	02	02	96	12.4	92	16.9	4.7	3.6	9.4	10.2	12.4	13.9	14.3	15.0	10	0	1.7	3.9	0	0	0	0	0	0	1010.5	0.3	0.0	1.2	0 0.0				
06	0	23	05	02	97	13.2	79	15.1	8.0	4.8	9.9	10.6	12.8	13.4	14.0	14.8	10	0	2.6	7.9	0	0	0	0	0	0	1014.5	1.0	0.0	1.0	50% snow cover 09GMT				
07	1	21	02	03	97	12.9	81	15.9	6.6	4.0	9.4	10.3	11.9	13.0	13.7	14.6	10	0	0.0	9.4	0	0	0	0	0	0	1018.0	0.0	0.0	1.2	0 0.0				
08	7	25	02	02	97	11.0	90	14.8	7.4	4.0	10.0	10.5	11.8	13.0	13.7	14.5	10	0	0.0	1.7	0	0	0	0	0	0	1021.0	0.0	0.0	1.4	Hail or ice pellets				
09	6	09	09	03	97	11.4	76	14.3	8.9	5.9	9.4	10.0	11.5	12.5	13.4	14.3	10	0	0.0	3.7	0	0	0	0	0	0	1022.0	0.0	0.0	2.5	0 0.2				
10	7	08	09	02	97	11.3	84	15.5	9.5	7.0	9.7	10.1	11.4	12.4	13.1	14.1	10	0	tr	5.5	0	0	0	0	0	0	1018.0	0.0	0.0	2.8	Thunder				
11	7	05	05	02	97	11.9	80	14.3	8.4	5.9	9.2	9.9	11.3	12.3	12.9	14.0	10	0	1.2	5.1	0	0	0	0	0	0	1017.5	2.0	0.0	2.2	2 0.5				
12	8	07	05	50	96	10.9	93	13.5	9.5	6.6	10.6	10.7	11.5	12.2	12.7	13.8	10	0	1.8	0.0	0	0	0	0	0	0	1011.5	4.4	0.0	0.5	Gale				
13	7	19	02	01	95	12.2	94	15.0	8.7	6.0	10.7	11.1	12.0	12.3	12.9	13.8	10	0	27.3	1.7	0	0	0	0	0	0	1009.0	9.1	0.0	1.2	0 0.2				
14	8	27	02	92	94	9.5	95	13.0	8.1	5.6	10.2	10.6	11.5	12.2	12.6	13.6	20	0	3.1	2.0	0	0	0	1	0	0	996.5	3.7	0.0	0.4	Fog at 09GMT				
15	8	24	02	60	95	8.3	97	11.1	8.0	5.9	10.0	10.4	11.4	12.3	12.7	13.6	10	0	4.3	0.0	0	0	0	0	0	0	998.0	9.0	0.0	0.3	1 2.0				
16	7	26	02	21	95	8.6	97	11.0	8.1	6.0	10.0	10.3	11.2	12.1	12.5	13.5	10	0	2.5	0.0	0	0	0	0	0	0	998.5	3.2	0.0	0.3	Air frost				
17	7	22	02	02	96	8.5	96	12.1	4.9	3.4	9.3	9.6	10.6	11.7	12.3	13.3	10	0	1.4	0.7	0	0	0	0	0	0	1004.0	0.6	0.0	0.6	0 0.8				
18	7	23	02	02	96	11.4	93	13.7	7.4	5.0	9.3	9.9	10.6	11.5	12.1	13.1	10	0	0.8	6.2	0	0	0	0	0	0	1010.0	1.8	0.0	1.4	Ground frost				
19	8	18	02	02	96	7.6	96	13.5	2.7	1.1	7.8	8.1	9.9	11.3	11.9	13.1	10	0	8.8	0.0	0	0	0	0	0	0	1000.5	6.2	0.0	1.1	0 4.5				
20	8	10	02	61	95	13.5	97	16.1	7.6	5.2	11.2	11.5	11.2	11.4	11.8	12.9	20	0	11.6	0.0	0	0	0	0	0	0	992.5	3.9	0.0	1.1	0.2mm precipitation				
21	1	19	05	01	97	11.6	78	15.2	7.7	5.0	9.3	10.1	11.9	12.0	11.9	12.9	10	0	tr	9.4	0	0	0	0	0	0	1005.0	0.0	0.0	2.0	20 14.0				
22	7	19	13	02	97	14.4	79	16.4	11.4	9.0	10.8	10.6	11.2	11.9	12.2	12.9	10	0	0.8	0.7	0	0	0	0	0	0	1010.5	0.5	0.0	2.2	1.0mm precipitation				
23	8	21	09	02	97	15.2	87	16.0	14.2	11.0	13.1	12.8	12.6	12.4	12.3	12.9	10	0	14.0	0.0	0	0	0	0	0	0	1005.5	10.0	0.0	0.6	18 11.4				
24	8	18	05	02	97	14.9	86	17.1	13.7	10.0	12.9	12.9	13.3	12.9	12.8	12.9	10	0	6.7	0.6	0	0	0	0	0	0	1004.0	0.8	0.0	1.6	5.0mm precipitation				
25	6	22	19	02	97	12.8	79	14.0	11.3	8.8	10.9	11.4	12.5	13.0	12.8	13.0	10	0	0.0	5.9	0	0	0	0	0	0	1003.0	0.0	0.0	1.3	9 4.6				
26	8	00	00	02	96	9.9	87	14.1	4.0	2.3	9.2	9.6	11.0	12.2	12.6	13.0	10	0	0.0	4.7	0	0	0	0	0	0	1014.5	0.0	0.0	1.2	No sunshine				
27	8	09	09	02	97	12.9	90	12.9	4.3	2.0	8.8	8.8	10.4	11.7	12.3	13.0	10	0	5.9	0.0	0	0	0	0	0	0	1003.5	5.4	0.0	0.9	7 6.6				
28	7	16	05	25	97	12.8	92	15.6	10.2	5.0	11.0	10.9	11.2	11.6	11.9	12.9	20	0	3.9	4.8	0	0	0	0	0	0	994.5	6.8	0.0	1.0	Temperatures were very uniform throughout the month, although the absolute maximum was the lowest in October since 1992. The wettest October since 2000 and the dullest since 1998. The mean air pressure was the lowest since 1976.				
29	8	18	05	50	96	11.9	92	14.9	10.8	7.8	10.7	11.0	11.3	11.9	12.0	12.9	10	0	0.1	1.0	0	0	0	0	0	0	994.0	0.1	0.0	1.0					
30	8	12	02	02	96	11.5	95	15.8	10.6	6.4	11.1	11.1	11.5	12.0	12.1	12.7	10	0	0.0	1.8	0	0	0	0	0	0	1007.5	0.0	0.0	0.4					
31	5	10	05	02	97	10.7	92	13.4	10.3	6.8	11.2	11.2	11.6	12.0	12.2	12.7	10	0	0.0	3.3	0	0	0	0	0	0	1023.0	0.0	0.0	1.0					
Monthly means						11.6	90	14.7	8.5	6.0	10.4	10.8	11.8	12.5	12.9	13.7												1008.8							
Monthly totals																				129.9	90.0								85.9	0.0	35.6				
Highest values						15.2		17.4	14.2	11.0	13.8	14.3	14.0	15.0	15.3	15.1			27.3	9.4									11.7	0.0	2.8				
Lowest values						7.6	76	11.0	2.7	1.1	7.8	8.1	9.9	11.3	11.8	12.7																			
1971-2000 monthly climatological averages						88	15.0	7.3	4.9	9.9	10.5	11.5	12.2	12.6	13.2					68.7	100.4								1015.1	51.8	4.8	35.6			

Key

DD: date

07GMT observations

N	cloud cover (oktas, 9=obscured)	dd	wind direction (degrees/10)
ff	wind speed (knots)		
ww	present weather code		
1	cloud decreasing	47	fog
2	sky not changing	50	intermittent slight rain
3	cloud increasing	60	intermittent slight rain
21	recent rain	61	continuous slight rain
25	recent rain shower	92	rain, with recent thunder

VV visibility (00-50 metres/100, 94 very poor, 95 poor, 96 moderate, 97 good)

Soil temperatures are for 0700GMT beneath bare soil (5, 10, 20cm) or grass (30, 50, 100cm)

09GMT observations

Temp	temperature (degC)	RH	relative humidity (%)
E	state of ground (00 dry, 10 moist, 20 wet, 90 cracked)	SS	snow depth (cm)
Press	air pressure (mb)		

24 hour readings

Max	maximum temperature (degC) beginning 09GMT	Min	minimum temperature (degC) ending 09GMT
Gmin	grass minimum temperature (degC) ending 09GMT	Rain	precipitation beginning 09GMT
Sun	sunshine (hours) sunrise-sunset	Rain hrs	hours of rainfall (>0.1mm/h) 09-09GMT
Fr. Hrs	hours of air frost (00-24GMT)	Pch Evap	Piche evaporation (ml) beginning 09GMT

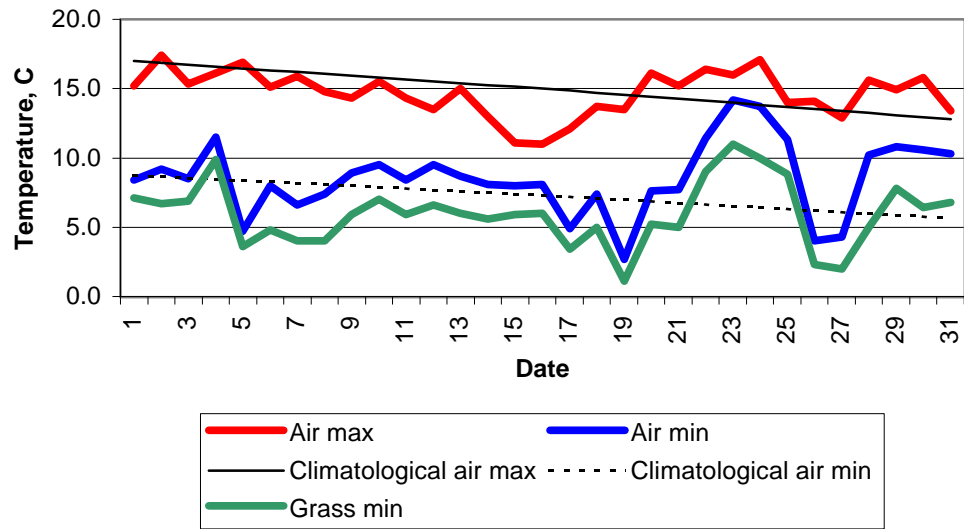
Days with

S	snow(5) or sleet(1) falling	L	50% snow cover at 09GMT	H	hail or ice pellets
T	thunder heard	G	gale	F	fog at 09GMT

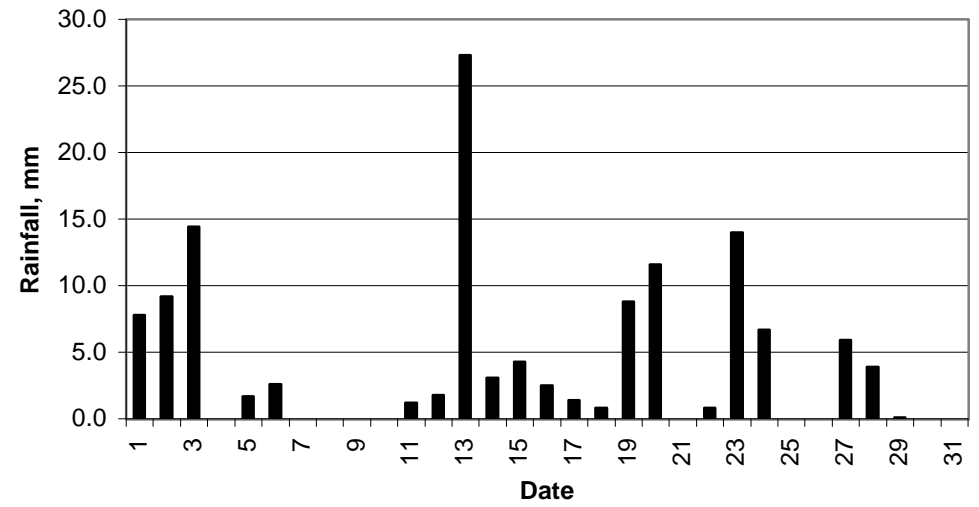
This information (and data for earlier months) is also available at

<http://www.met.rdg.a.uk/~brugge>

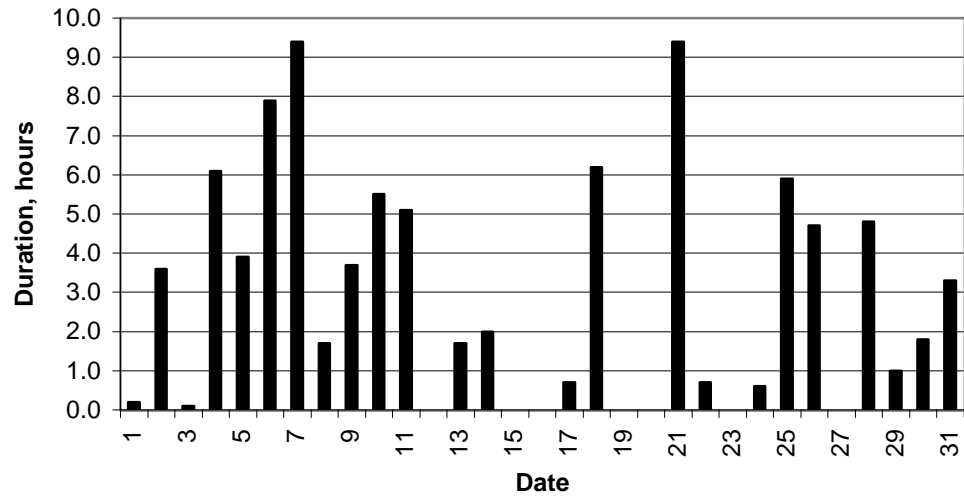
Daily temperature extremes



Daily rainfall



Daily sunshine



Daily evaporation

