

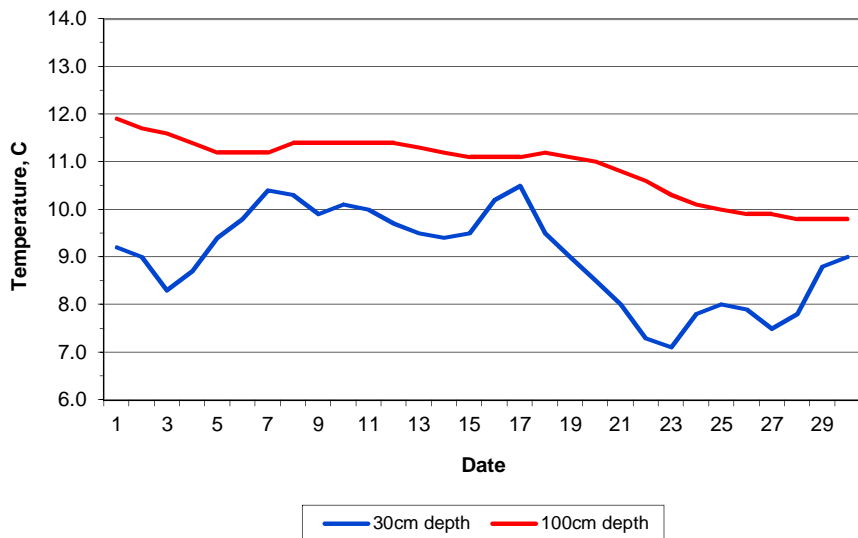
MAIDENHEAD METEOROLOGICAL OBSERVATIONS FOR NOVEMBER 2018

DD	N	dd	ff	ww	VV	0900GMT		Temperature			Soil temperatures (depth in cm)						E	SS	Rain	Sun	S	L	H	T	G	F	Press	Rain	Fr.	Pch		
						Temp	RH	Max	Min	Gmin	5	10	20	30	50	100												hrs	hrs	Evap		
01	8	13	02	02	95	10.3	94	10.6	0.8	2.1	8.8	8.4	8.8	9.2	9.6	11.9	10	0	1.9	0.0	0	0	0	0	0	0	1003.5	1.2	0.0	0.2	Number of days with 2018 normal Snow/sleet falling 0 0.4 50% snow cover 09GMT 0 0.0 Hail or ice pellets 0 0.3 Thunder 1 0.2 Gale 0 0.0 Fog at 09GMT 0 2.1 Air frost 3 4.6 Ground frost 7 9.9 0.2mm precipitation 18 14.9 1.0mm precipitation 9 11.1 5.0mm precipitation 6 5.0 No sunshine 9 9.7 Overall slightly milder, drier and sunnier than normal with more frost days than normal and a rather dull spell during the final week (but not on the final day of the month). Morning winds blew from between the NE and SE on half the mornings of the month.	
02	1	31	02	02	97	1.6	92	11.4	-1.0	-3.5	4.3	4.8	7.2	9.0	9.6	11.7	10	0	0.0	7.0	0	0	0	0	0	1023.5	0.0	5.6	0.8			
03	7	18	02	10	96	4.7	96	14.7	1.0	1.0	5.3	5.2	6.7	8.3	9.2	11.6	10	0	tr	4.9	0	0	0	0	0	1024.0	0.0	0.0	1.6			
04	8	18	02	60	97	10.4	80	13.0	4.7	0.5	8.1	7.8	8.1	8.7	9.1	11.4	10	0	0.0	0.0	0	0	0	0	0	1011.5	0.0	0.0	0.8			
05	7	09	02	10	95	10.3	92	15.7	6.6	2.1	8.3	8.3	8.9	9.4	9.3	11.2	10	0	0.0	1.3	0	0	0	0	0	1005.0	0.0	0.0	0.5			
06	8	00	00	44	05	12.4	95	14.9	7.5	3.4	8.9	8.8	9.4	9.8	9.7	11.2	10	0	6.2	0.9	0	0	0	0	0	1000.0	5.3	0.0	0.8			
07	8	13	09	21	97	12.5	89	13.9	11.8	10.0	10.9	10.7	10.6	10.4	10.1	11.2	10	0	0.8	0.8	0	0	0	0	0	994.5	1.2	0.0	0.7			
08	7	13	02	03	97	10.7	90	14.6	2.4	-0.6	7.2	7.3	9.0	10.3	10.5	11.4	10	0	0.0	5.2	0	0	0	0	0	1014.5	0.0	0.0	1.2			
09	7	09	02	02	97	10.4	93	12.9	6.7	1.6	7.9	8.1	9.0	9.9	10.1	11.4	10	0	9.4	1.5	0	0	0	0	0	1008.0	6.5	0.0	0.8			
10	1	18	02	05	96	8.5	93	14.7	5.7	1.5	7.8	8.1	9.5	10.1	10.2	11.4	20	0	10.1	2.7	0	0	0	1	0	996.0	7.9	0.0	0.4			
11	7	18	02	25	97	10.1	92	13.5	6.6	2.0	8.4	8.4	9.3	10.0	10.1	11.4	20	0	1.6	5.7	0	0	0	0	0	997.0	0.9	0.0	0.8			
12	4	18	02	05	95	6.9	94	14.9	6.2	1.7	7.7	7.8	8.9	9.7	10.1	11.4	10	0	0.8	4.5	0	0	0	0	0	1009.5	0.4	0.0	0.9			
13	0	22	02	02	97	8.7	92	14.0	6.6	1.6	6.6	6.8	8.4	9.5	9.9	11.3	10	0	tr	5.7	0	0	0	0	0	1020.0	0.0	0.0	0.7			
14	3	18	02	02	97	10.7	88	14.8	7.4	2.0	8.0	8.1	8.8	9.4	9.7	11.2	10	0	tr	7.0	0	0	0	0	0	1023.0	0.0	0.0	0.8			
15	7	00	00	10	95	11.5	93	14.5	5.7	1.0	9.1	8.9	9.0	9.5	9.7	11.1	10	0	0.2	0.1	0	0	0	0	0	1021.0	0.2	0.0	0.3			
16	8	09	02	20	95	11.3	93	11.3	11.3	7.9	10.6	10.5	10.4	10.2	10.0	11.1	10	0	0.4	0.0	0	0	0	0	0	1025.5	0.1	0.0	0.3			
17	8	09	09	05	94	8.0	84	11.8	7.2	6.5	9.0	9.3	10.0	10.5	10.2	11.1	10	0	tr	5.8	0	0	0	0	0	1027.0	0.0	0.0	0.8			
18	1	09	02	05	95	6.4	89	11.4	4.3	-1.0	6.0	6.2	8.1	9.5	9.9	11.2	10	0	0.0	7.0	0	0	0	0	0	1028.0	0.0	0.0	1.7			
19	8	09	09	02	97	7.7	65	8.5	5.9	1.1	6.6	6.6	7.8	9.0	9.6	11.1	10	0	0.5	2.2	0	0	0	0	0	1022.5	0.6	0.0	1.5			
20	8	05	09	25	97	5.5	71	5.5	4.7	1.5	5.8	5.8	7.2	8.5	9.1	11.0	10	0	5.5	0.0	0	0	0	0	0	1010.0	13.0	0.0	0.3			
21	5	09	09	21	96	2.3	87	7.5	1.9	0.5	5.5	5.1	6.6	8.0	8.7	10.8	10	0	0.3	3.1	0	0	0	0	0	1010.5	0.3	1.1	0.5			
22	1	00	00	02	94	-2.1	83	6.2	-3.6	-5.7	2.3	2.7	5.2	7.3	8.3	10.6	40	0	0.1	0.4	0	0	0	0	0	1018.5	0.1	9.7	0.4			
23	8	08	02	02	94	6.2	90	8.5	-2.1	-2.4	5.8	5.6	6.2	7.1	7.8	10.3	10	0	0.2	0.0	0	0	0	0	0	1016.0	0.1	0.0	0.4			
24	8	09	02	60	94	8.4	88	9.3	6.2	6.1	7.3	7.2	7.5	7.8	7.9	10.1	10	0	0.5	0.0	0	0	0	0	0	1010.0	1.2	0.0	0.9			
25	8	05	05	02	96	6.8	80	8.6	6.4	5.1	6.9	6.7	7.5	8.0	8.2	10.0	10	0	tr	0.0	0	0	0	0	0	1011.0	0.0	0.0	0.8			
26	7	05	05	02	97	5.8	82	7.9	3.7	-0.9	6.1	6.1	7.0	7.9	8.2	9.9	10	0	0.0	0.7	0	0	0	0	0	1014.0	0.0	0.0	0.4			
27	8	00	00	44	94	3.4	94	13.2	2.2	-2.0	5.6	5.6	6.6	7.5	8.1	9.9	10	0	10.9	0.0	0	0	0	0	0	1016.5	11.5	0.0	0.8			
28	8	18	05	60	95	13.2	94	14.0	3.4	3.9	8.7	7.9	7.6	7.8	7.9	9.8	20	0	3.9	0.0	0	0	0	0	0	1008.0	3.3	0.0	0.8			
29	8	18	13	21	96	13.1	85	13.7	12.2	8.5	10.1	9.9	8.9	8.8	8.5	9.8	20	0	0.7	0.1	0	0	0	0	0	999.5	0.7	0.0	1.2			
30	1	22	02	01	97	6.4	89	11.2	5.8	0.2	6.6	6.8	8.2	9.0	8.9	9.8	10	0	5.5	5.1	0	0	0	0	0	1007.0	3.8	0.0	1.1			
Monthly means						8.1	88	11.9	4.9	1.9	7.3	7.3	8.2	9.0	9.3	10.9											1012.5					
Monthly totals																					59.5	71.7						58.3	16.4	23.2		
Highest values						13.2		15.7	12.2	10.0	10.9	10.7	10.6	10.5	10.5	11.9				10.9	7.0							13.0	9.7	1.7		
Lowest values						-2.1	65	5.5	-3.6	-5.7	2.3	2.7	5.2	7.1	7.8	9.8																
1981-2010 monthly climatological averages						91	10.8	4.4	2.0	6.9	7.1	8.1	9.0	9.4	10.8							69.7	64.4						1014.7	58.9	28.1	22.4

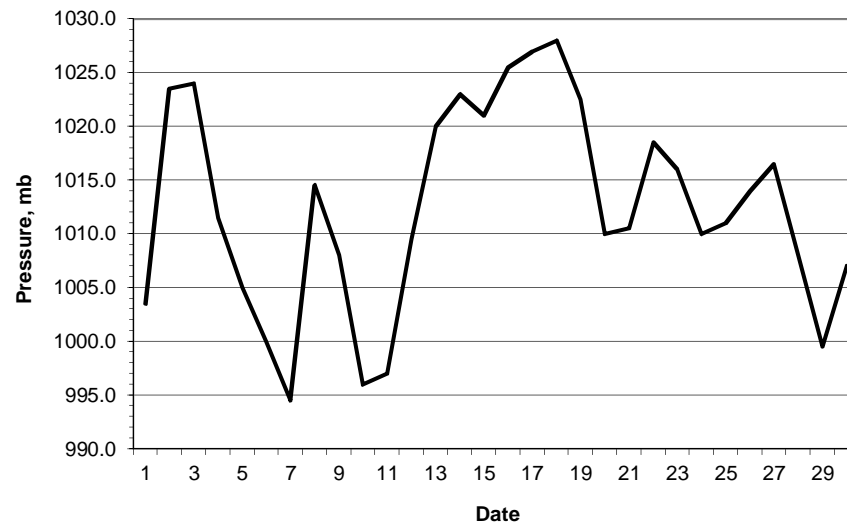
Key  
 DD: date  
 07GMT observations  
 N cloud cover (oktas, 9=obscured) dd wind direction (degrees/10)  
 ff wind speed (knots)  
 ww present weather code  
 1 cloud decreasing 45 fog  
 2 sky not changing 50 intermittent light drizzle  
 3 cloud increasing 60 intermittent slight rain  
 10 mist 61 continuous slight rain  
 21 recent rain  
 VV visibility (00-50 metres/100, 94 very poor, 95 poor, 96 moderate, 97 good)  
 Soil temperatures are for 0700GMT beneath bare soil (5, 10, 20cm) or grass (30, 50, 100cm)  
 09GMT observations  
 Temp temperature (degC) RH relative humidity (%)  
 E state of ground (00 dry, 10 moist, 20 wet, 40 frozen) SS snow depth (cm)  
 Press air pressure (mb)  
 24 hour readings  
 Max maximum temperature (degC) beginning 09GMT Min minimum temperature (degC) ending 09GMT  
 Gmin grass minimum temperature (degC) ending 09GMT Rain precipitation beginning 09GMT  
 Sun sunshine (hours) sunrise-sunset Rain hrs hours of rainfall (>0.1mm/h) 09-09GMT  
 Fr. Hrs hours of air frost (00-24GMT) Pch Evap Piche evaporation (ml) beginning 09GMT  
 Days with  
 S snow(5) or sleet(1) falling L 50% snow cover at 09GMT H hail or ice pellets  
 T thunder heard G gale F fog at 09GMT

This information (and data for earlier months) is also available at <http://www.met.rdg.ac.uk/~brugge>

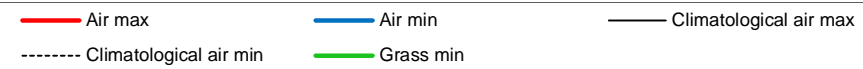
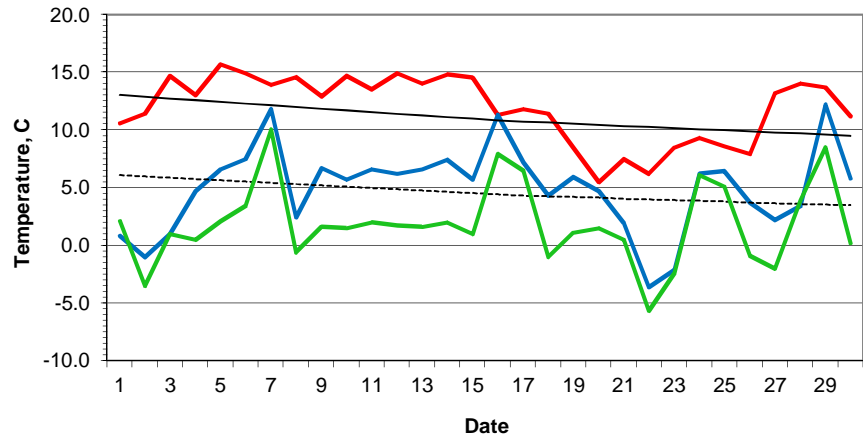
**Daily soil temperatures, 0700GMT**



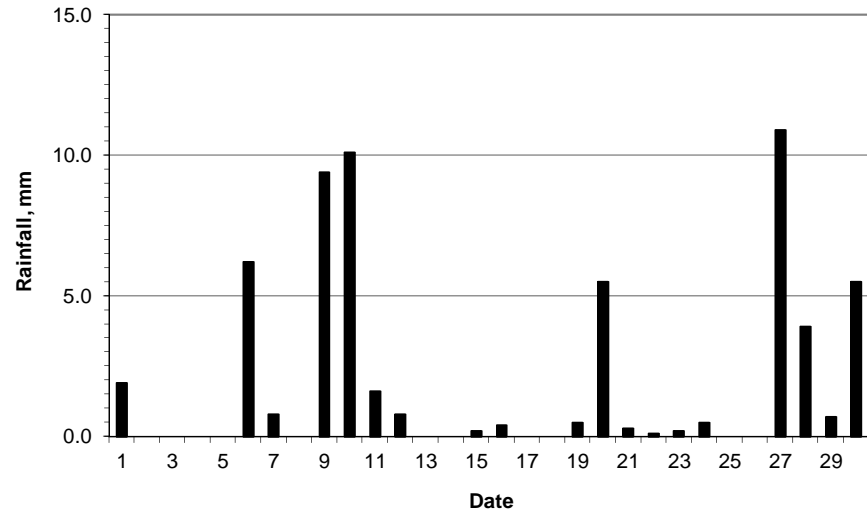
**Mean sea level pressure, 0900GMT**



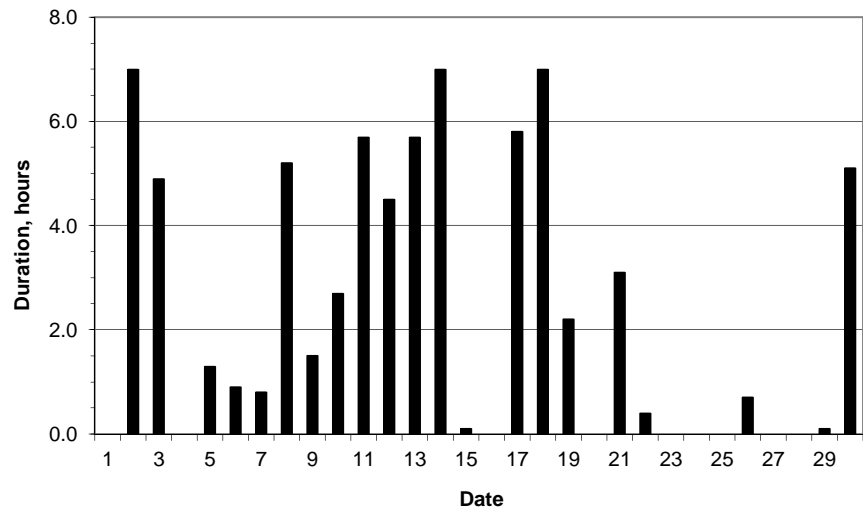
### Daily temperature extremes



### Daily rainfall



### Daily sunshine



### Daily evaporation

