

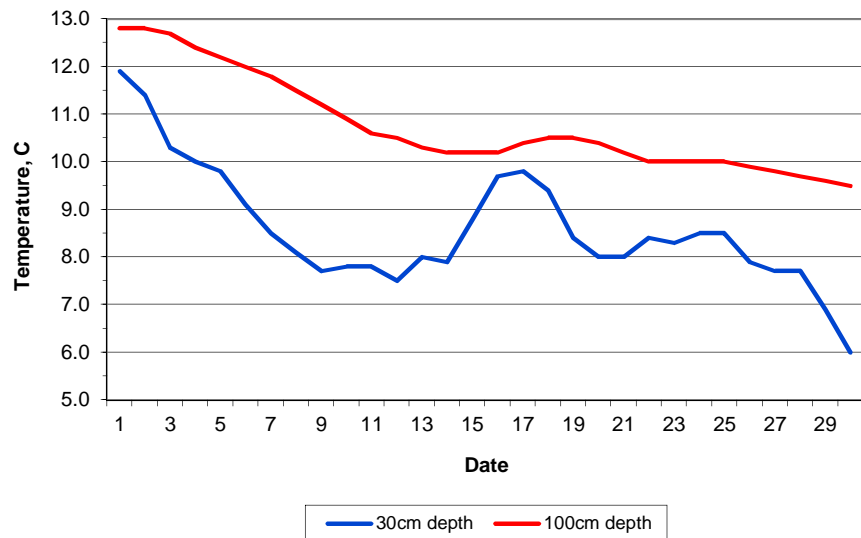
MAIDENHEAD METEOROLOGICAL OBSERVATIONS FOR NOVEMBER 2016

DD	N	dd	ff	ww	VV	0900GMT		Temperature			Soil temperatures (depth in cm)						E	SS	Rain	Sun	S	L	H	T	G	F	Press	Rain	Fr.	Pch		
						Temp	RH	Max	Min	Gmin	5	10	20	30	50	100												hrs	hrs	Evap		
01	9	00	00	45	04	9.2	94	12.2	5.6	4.1	8.9	9.3	10.5	11.9	12.0	12.8	10	0	tr	0.0	0	0	0	0	0	1	1023.5	0.0	0.0	0.8	Number of days with 2016 normal Snow/sleet falling 0 0.4 50% snow cover 09GMT 0 0.0 Hail or ice pellets 0 0.3 Thunder 0 0.2 Gale 0 0.0 Fog at 09GMT 1 2.1 Air frost 6 4.6 Ground frost 14 9.9 0.2mm precipitation 16 14.9 1.0mm precipitation 9 11.1 5.0mm precipitation 6 5.0 No sunshine 9 9.7 A cool (coldest November month with coldest November night (30th) since 2010), wet and sunny (sunniest November since 2007) month. Over 90% of the rain fell in the fortnight 8th-21st, the spell including the wettest November day since 2007. As storm Angus passed close by, pressure fell to 972 mb around dawn on the 20th.	
02	2	00	00	02	96	5.0	93	10.9	2.4	0.0	6.4	7.6	9.7	11.4	11.6	12.8	10	0	0.0	7.2	0	0	0	0	0	0	1025.5	0.0	0.0	1.1		
03	6	00	00	02	96	1.6	89	11.0	-0.5	-2.0	4.8	5.6	7.9	10.3	11.1	12.7	10	0	0.1	4.2	0	0	0	0	0	0	1023.5	0.2	3.0	1.3		
04	8	22	02	02	96	8.8	89	10.0	1.6	-0.7	7.9	8.1	9.0	10.0	10.5	12.4	10	0	6.0	0.1	0	0	0	0	0	0	1011.0	5.4	0.0	0.5		
05	7	31	05	02	97	5.0	94	8.6	0.7	-1.0	5.8	6.1	8.0	9.8	10.4	12.2	10	0	0.0	1.2	0	0	0	0	0	0	1006.0	0.0	0.0	1.3		
06	0	31	05	02	97	4.3	71	8.0	1.8	-1.0	3.9	4.6	6.8	9.1	10.0	12.0	10	0	0.9	5.0	0	0	0	0	0	0	1007.0	0.4	0.0	1.4		
07	2	36	09	01	97	5.9	78	8.2	4.0	1.0	5.1	5.6	7.0	8.5	9.4	11.8	10	0	0.0	4.9	0	0	0	0	0	0	1012.5	0.0	0.0	0.9		
08	0	22	02	02	96	-0.5	89	6.3	-2.4	-4.0	2.2	3.3	5.6	8.1	9.0	11.5	10	0	25.6	2.2	0	0	0	0	0	0	1012.5	11.0	9.0	1.2		
09	8	31	05	21	95	6.3	93	8.9	-0.5	-4.3	6.0	5.9	6.5	7.7	8.5	11.2	20	0	0.6	1.7	0	0	0	0	0	0	997.0	0.7	0.0	0.6		
10	8	27	02	02	96	5.3	93	10.6	2.4	-0.1	5.1	5.2	6.8	7.8	8.4	10.9	10	0	0.1	2.9	0	0	0	0	0	0	1007.0	0.2	0.0	1.1		
11	7	27	02	02	97	4.2	91	10.7	1.3	-0.9	4.0	4.4	6.4	7.8	8.3	10.6	10	0	5.7	5.8	0	0	0	0	0	0	1022.5	3.8	0.0	2.3		
12	8	13	02	63	96	8.9	92	10.7	1.1	-0.6	6.9	6.1	6.4	7.5	8.1	10.5	20	0	4.8	0.0	0	0	0	0	0	0	1015.0	3.6	0.0	0.4		
13	5	31	02	02	97	7.4	92	11.1	6.0	2.0	6.1	6.1	6.7	8.0	8.2	10.3	20	0	0.2	7.6	0	0	0	0	0	0	1026.5	0.4	0.0	0.5		
14	8	22	02	60	97	8.3	93	12.9	4.7	2.0	6.9	6.6	7.2	7.9	8.2	10.2	10	0	0.2	0.0	0	0	0	0	0	0	1030.0	0.5	0.0	0.3		
15	8	27	02	02	96	12.9	91	15.4	8.3	6.7	9.9	9.6	9.2	8.8	8.6	10.2	10	0	0.5	0.0	0	0	0	0	0	0	1026.0	1.2	0.0	0.4		
16	1	27	05	02	97	11.0	83	13.6	11.0	7.5	10.1	10.4	10.1	9.7	9.2	10.2	10	0	3.7	4.9	0	0	0	0	0	0	1016.0	2.1	0.0	0.9		
17	7	22	02	02	97	6.8	83	12.7	6.8	4.6	8.4	8.3	9.0	9.8	9.6	10.4	10	0	2.4	1.7	0	0	0	0	0	0	1003.0	0.7	0.0	1.0		
18	2	22	02	02	97	3.6	86	7.2	3.1	-0.3	5.3	6.1	7.8	9.4	9.5	10.5	10	0	tr	1.7	0	0	0	0	0	0	995.0	0.0	0.0	0.6		
19	0	00	00	02	97	0.4	89	8.9	-0.9	-2.2	3.1	3.9	6.3	8.4	9.0	10.5	40	0	17.5	3.3	0	0	0	0	0	0	1003.0	9.2	6.2	0.6		
20	8	27	09	60	97	7.2	90	7.5	0.4	-2.2	7.5	7.2	7.5	8.0	8.4	10.4	10	0	9.8	0.0	0	0	0	0	0	0	982.0	7.6	0.0	0.2		
21	8	09	05	61	96	7.2	93	12.0	5.2	3.6	6.3	6.6	6.8	8.0	8.4	10.2	20	0	7.2	0.0	0	0	0	0	0	0	990.0	6.8	0.0	0.4		
22	7	18	05	02	97	9.6	86	11.2	7.2	2.6	8.2	7.9	8.1	8.4	8.4	10.0	20	0	0.4	1.9	0	0	0	0	0	0	997.0	0.3	0.0	0.6		
23	8	36	05	02	95	6.0	93	9.9	3.2	0.7	6.2	6.2	7.2	8.3	8.5	10.0	10	0	tr	0.0	0	0	0	0	0	0	1017.0	0.0	0.0	0.8		
24	8	04	05	02	97	9.8	81	10.0	6.0	5.3	8.3	8.2	8.4	8.5	8.5	10.0	10	0	0.0	0.0	0	0	0	0	0	0	1023.5	0.0	0.0	1.5		
25	3	04	09	03	97	5.8	80	10.2	4.8	1.3	5.1	5.7	7.2	8.5	8.6	10.0	10	0	0.0	7.2	0	0	0	0	0	0	1022.5	0.0	0.0	1.1		
26	0	04	02	02	96	4.7	93	8.4	3.8	0.5	4.4	4.9	6.4	7.9	8.3	9.9	10	0	0.2	1.9	0	0	0	0	0	0	1021.5	0.6	0.0	0.4		
27	8	04	05	21	97	7.0	89	8.4	4.2	0.9	6.6	6.3	6.8	7.7	8.0	9.8	10	0	0.0	0.0	0	0	0	0	0	0	1025.0	0.0	0.0	1.3		
28	2	04	02	02	97	5.4	77	9.0	5.0	0.1	5.4	5.7	7.0	7.7	7.9	9.7	10	0	0.0	7.0	0	0	0	0	0	0	1029.5	0.0	0.0	1.1		
29	0	36	02	02	97	0.5	80	6.2	-1.8	-5.4	1.7	2.4	4.8	6.9	7.6	9.6	10	0	0.0	7.4	0	0	0	0	0	0	1034.5	0.0	13.4	0.2		
30	1	00	00	02	97	-5.0	79	4.4	-5.7	-7.9	0.6	1.4	3.2	6.0	7.0	9.5	40	0	0.0	6.7	0	0	0	0	0	0	1036.0	0.0	17.4	0.5		
Monthly means						5.8	87	9.8	3.0	0.3	5.9	6.2	7.3	8.6	9.0	10.8												1014.7				
Monthly totals																					85.9	86.5							54.7	49.0	25.3	
Highest values						12.9		15.4	11.0	7.5	10.1	10.4	10.5	11.9	12.0	12.8			25.6	7.6									11.0	17.4	2.3	
Lowest values						-5.0	71	4.4	-5.7	-7.9	0.6	1.4	3.2	6.0	7.0	9.5																
1981-2010 monthly climatological averages						91	10.8	4.4	2.0	6.9	7.1	8.1	9.0	9.4	10.8			69.7	64.4										1014.7	58.9	28.1	22.4

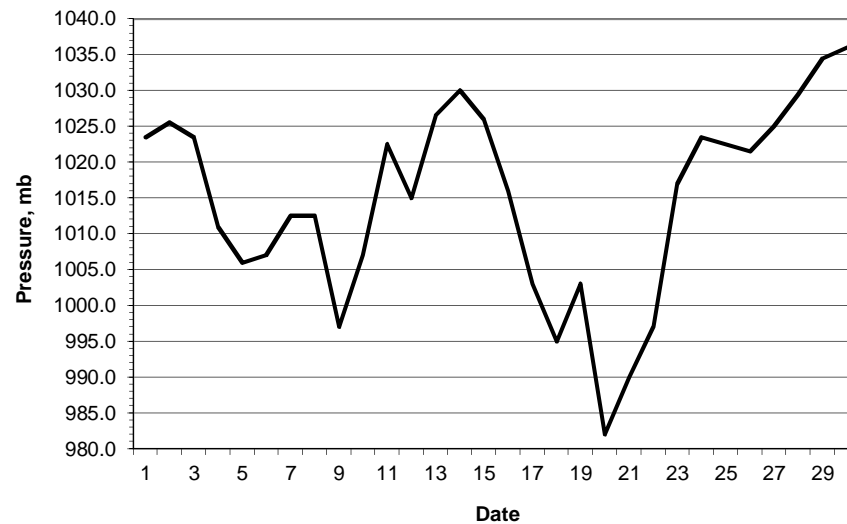
Key
 DD: date
 07GMT observations
 N cloud cover (oktas, 9=obscured) dd wind direction (degrees/10)
 ff wind speed (knots)
 ww present weather code
 1 cloud decreasing 45 fog
 2 sky not changing 50 intermittent light drizzle
 3 cloud increasing 60 intermittent slight rain
 10 mist 61 continuous slight rain
 21 recent rain
 VV visibility (00-50 metres/100, 94 very poor, 95 poor, 96 moderate, 97 good)
 Soil temperatures are for 0700GMT beneath bare soil (5, 10, 20cm) or grass (30, 50, 100cm)
 09GMT observations
 Temp temperature (degC) RH relative humidity (%)
 E state of ground (00 dry, 10 moist, 20 wet, 40 frozen) SS snow depth (cm)
 Press air pressure (mb)
 24 hour readings
 Max maximum temperature (degC) beginning 09GMT Min minimum temperature (degC) ending 09GMT
 Gmin grass minimum temperature (degC) ending 09GMT Rain precipitation beginning 09GMT
 Sun sunshine (hours) sunrise-sunset Rain hrs hours of rainfall (>0.1mm/h) 09-09GMT
 Fr. Hrs hours of air frost (00-24GMT) Pch Evap Piche evaporation (ml) beginning 09GMT
 Days with
 S snow(5) or sleet(1) falling L 50% snow cover at 09GMT H hail or ice pellets
 T thunder heard G gale F fog at 09GMT

This information (and data for earlier months) is also available at <http://www.met.rdg.ac.uk/~brugge>

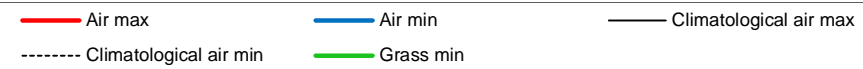
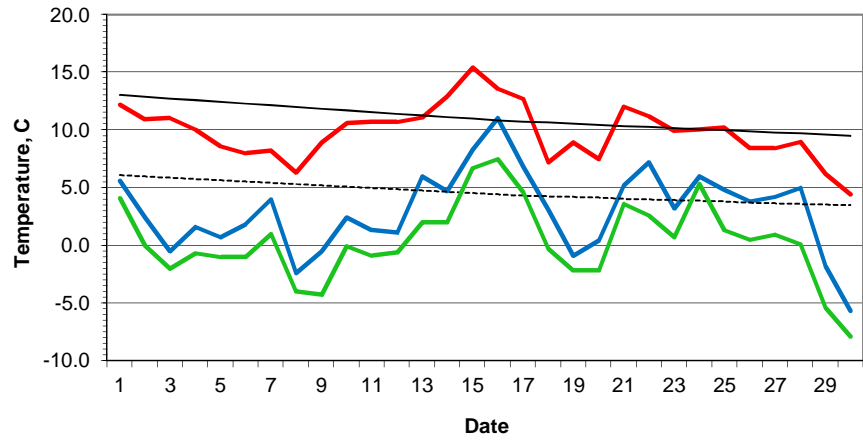
Daily soil temperatures, 0700GMT



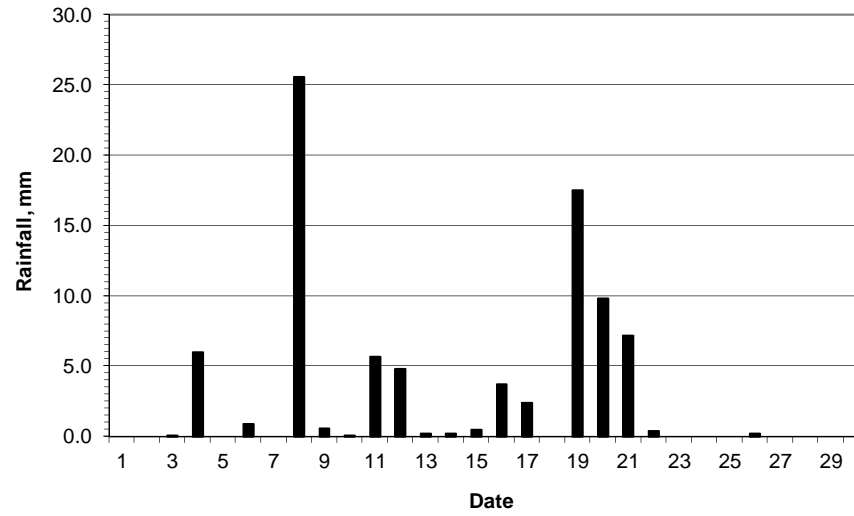
Mean sea level pressure, 0900GMT



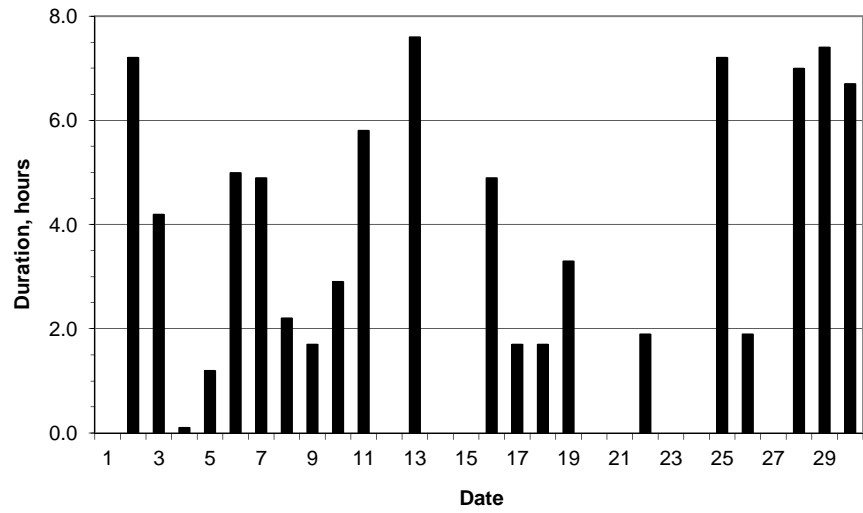
Daily temperature extremes



Daily rainfall



Daily sunshine



Daily evaporation

