

MAIDENHEAD METEOROLOGICAL OBSERVATIONS FOR NOVEMBER 2009

DD	N	dd	ff	ww	VV	0900GMT		Temperature			Soil temperatures (depth in cm)						E	SS	Rain	Sun	S	L	H	T	G	F	Press	Rain hrs	Fr. hrs	Pch Evap		
						Temp	RH	Max	Min	Gmin	5	10	20	30	50	100																
01	8	14	13	61	96	14.1	97	16.6	11.1	9.6	12.3	12.3	12.5	12.8	12.7	13.2	10	0	10.0	0.1	0	0	0	0	0	0	1000.0	2.2	0.0	1.0	Number of days with 2009 normal Snow/sleet falling 0 0.5 50% snow cover 09GMT 0 0.0 Hail or ice pellets 0 0.2 Thunder 0 0.2 Gale 0 0.1 Fog at 09GMT 1 3.3 Air frost 0 5.4 Ground frost 3 11.5 0.2mm precipitation 26 13.7 1.0mm precipitation 19 10.4 5.0mm precipitation 8 4.9 No sunshine 4 10.1 A very wet and cyclonic month. MSL pressure was frequently below 1000mb and was the lowest overall for November since 2000. Rainfall amounted to over twice the normal for November with 26 rain days. There was no air frost. Overall it was the wettest November since 2003.	
02	0	24	02	02	96	7.5	96	12.7	4.3	2.8	8.9	9.8	11.4	12.4	12.7	13.0	10	0	4.4	7.7	0	0	0	0	0	1001.5	3.8	0.0	1.4			
03	8	18	02	21	96	12.0	96	13.5	7.5	3.3	10.8	10.5	11.0	11.7	12.3	13.0	10	0	2.4	2.9	0	0	0	0	0	991.0	1.8	0.0	0.6			
04	0	18	02	02	97	7.0	94	12.0	3.7	2.0	8.1	8.7	10.2	11.5	12.2	12.9	10	0	1.6	6.3	0	0	0	0	0	988.5	1.0	0.0	1.3			
05	7	27	09	02	97	10.2	88	12.5	7.0	2.2	8.9	9.0	9.9	10.9	11.7	12.7	10	0	0.3	2.0	0	0	0	0	0	993.5	0.3	0.0	0.7			
06	7	25	05	02	97	9.3	90	11.4	8.2	6.0	9.6	9.4	10.3	10.9	11.3	12.5	10	0	4.7	0.1	0	0	0	0	0	1004.0	4.3	0.0	0.6			
07	0	27	02	02	97	5.8	93	10.5	3.6	1.6	7.8	8.3	9.6	10.8	11.3	12.4	10	0	0.6	6.1	0	0	0	0	0	997.0	0.7	0.0	0.5			
08	8	33	04	21	97	8.5	93	10.0	5.8	2.4	8.4	8.5	9.2	10.2	11.2	12.4	10	0	0.0	0.5	0	0	0	0	0	1002.5	0.0	0.0	0.4			
09	0	36	02	02	96	4.8	98	7.8	1.2	-0.2	6.1	6.7	8.5	9.9	10.7	12.1	10	0	tr	2.0	0	0	0	0	0	1020.0	0.0	0.0	0.2			
10	8	18	02	60	06	4.5	97	7.4	0.8	-0.3	6.7	6.9	8.0	9.2	10.5	12.0	10	0	2.1	0.0	0	0	0	0	1	1014.5	6.0	0.0	0.3			
11	8	36	02	44	08	7.4	97	10.1	4.5	4.7	8.2	8.1	8.6	9.3	10.2	11.7	10	0	0.8	0.3	0	0	0	0	0	1009.5	2.5	0.0	0.1			
12	2	22	02	02	96	7.0	98	13.5	3.1	2.4	7.4	8.0	9.0	9.6	10.2	11.6	10	0	12.9	0.5	0	0	0	0	0	1004.0	8.5	0.0	0.6			
13	8	18	02	61	95	10.3	98	15.4	7.0	2.5	9.4	9.4	9.8	10.0	10.4	11.5	10	0	17.6	0.0	0	0	0	0	0	1000.5	13.5	0.0	1.0			
14	6	20	13	02	97	10.3	77	13.6	10.1	7.4	10.0	10.1	10.6	10.0	10.6	11.4	10	0	8.0	1.7	0	0	0	0	0	992.5	4.8	0.0	1.0			
15	3	27	05	03	97	8.4	85	13.4	4.8	2.0	9.9	9.7	9.7	10.2	10.5	11.4	10	0	3.9	6.3	0	0	0	0	0	1005.5	4.3	0.0	0.2			
16	8	15	05	80	96	12.6	95	13.8	6.0	4.0	9.8	9.4	9.5	10.0	10.5	11.4	10	0	0.3	3.8	0	0	0	0	0	997.0	0.2	0.0	1.2			
17	6	22	02	02	97	10.5	96	13.1	7.6	4.0	8.2	8.4	9.5	10.1	10.4	11.4	10	0	0.3	5.5	0	0	0	0	0	1008.0	0.1	0.0	2.0			
18	8	23	13	02	97	13.1	72	13.9	10.5	5.1	9.9	9.4	9.6	10.0	10.5	11.4	10	0	tr	0.0	0	0	0	0	0	1009.0	0.0	0.0	1.7			
19	8	18	09	02	97	13.5	77	14.7	13.0	10.2	10.1	10.6	10.6	10.5	10.6	11.3	10	0	1.9	4.5	0	0	0	0	0	1013.0	2.1	0.0	2.2			
20	8	18	09	61	96	14.2	93	15.0	12.6	9.4	10.9	10.8	10.6	10.8	10.6	11.3	10	0	0.3	2.5	0	0	0	0	0	1010.0	0.9	0.0	0.5			
21	8	22	05	02	97	13.2	91	15.4	6.6	4.0	10.7	10.5	10.5	10.8	10.8	11.4	10	0	8.9	0.2	0	0	0	0	0	1016.5	8.1	0.0	0.7			
22	6	18	05	01	97	9.3	88	10.9	8.4	6.0	9.8	10.1	10.6	11.0	11.1	11.5	10	0	4.2	1.0	0	0	0	0	0	1003.0	4.1	0.0	1.4			
23	8	23	09	61	97	10.9	91	13.5	8.4	6.0	8.9	9.4	9.7	10.5	10.9	11.5	10	0	2.5	1.7	0	0	0	0	0	999.0	2.5	0.0	0.9			
24	8	21	09	02	97	13.0	89	14.0	8.3	5.9	9.4	9.6	10.0	10.5	10.6	11.4	10	0	7.0	0.0	0	0	0	0	0	1008.0	5.2	0.0	1.5			
25	0	19	05	01	97	8.9	90	11.4	8.6	6.9	9.9	10.1	10.6	10.9	10.8	11.4	10	0	0.2	6.8	0	0	0	0	0	1000.0	0.2	0.0	1.1			
26	0	23	09	02	97	7.8	86	10.4	6.8	3.6	7.8	8.1	9.3	10.2	10.6	11.4	10	0	0.0	6.2	0	0	0	0	0	1002.0	0.0	0.0	1.0			
27	3	18	05	02	97	6.8	85	8.1	4.1	1.1	6.8	7.1	8.6	9.6	10.3	11.4	10	0	3.4	0.9	0	0	0	0	0	1000.0	2.6	0.0	0.6			
28	1	22	05	02	97	5.1	85	8.5	2.5	-0.1	6.1	6.3	8.1	9.0	9.8	11.2	10	0	17.9	4.9	0	0	0	0	0	995.0	10.1	0.0	0.5			
29	8	23	05	62	96	6.1	96	7.1	4.7	2.1	7.1	7.1	7.7	8.6	9.3	11.0	10	0	15.7	0.4	0	0	0	0	0	987.0	11.2	0.0	0.3			
30	8	36	13	61	94	5.9	97	6.0	5.7	4.6	6.6	7.0	8.0	8.4	9.1	10.8	10	0	2.7	1.5	0	0	0	0	0	997.5	2.0	0.0	0.6			
Monthly means						9.3	91	11.9	6.6	4.0	8.8	9.0	9.7	10.3	10.8	11.8												1002.3				
Monthly totals																					134.6	76.4						103.0	0.0	26.1		
Highest values						14.2		16.6	13.0	10.2	12.3	12.3	12.5	12.8	12.7	13.2			17.9	7.7								13.5	0.0	2.2		
Lowest values						4.5	72	6.0	0.8	-0.3	6.1	6.3	7.7	8.4	9.1	10.8																
1971-2000 monthly climatological averages						90	10.6	4.0	1.7	6.4	6.8	7.8	8.7	9.1	10.5			61.0	62.1									1015.2	55.6	28.8	21.8	

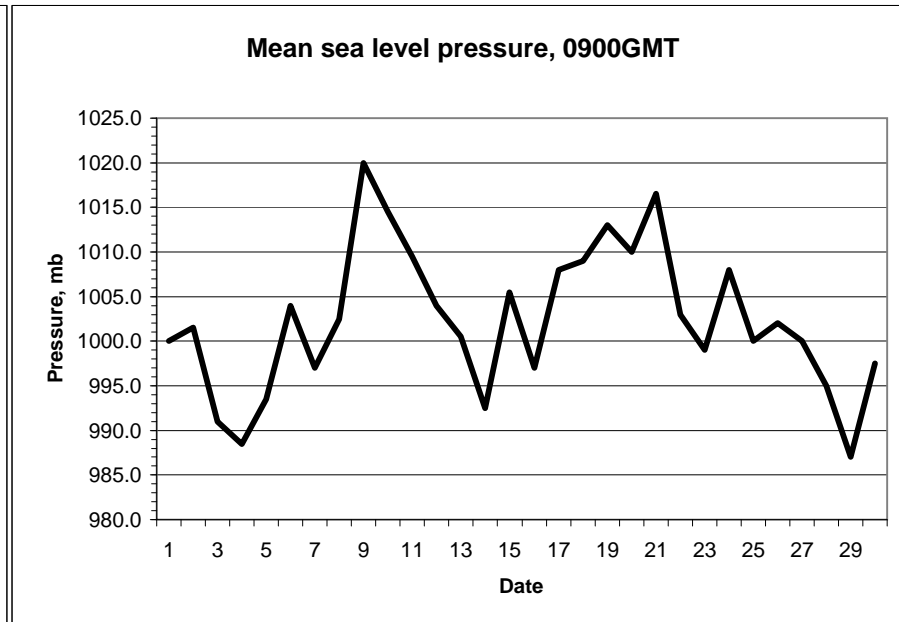
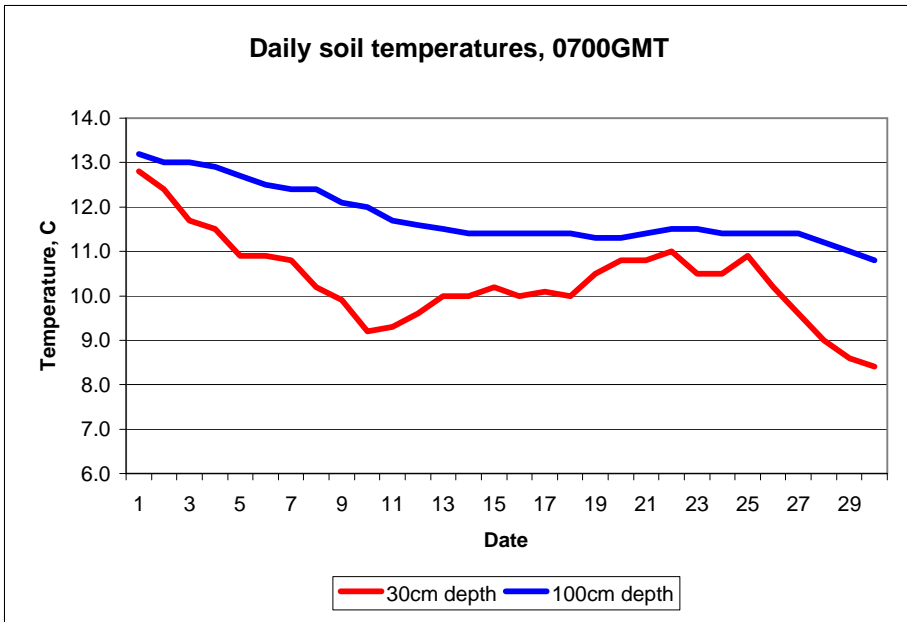
Key
 DD: date
 07GMT observations
 N cloud cover (oktas, 9=obscured) dd wind direction (degrees/10)
 ff wind speed (knots)
 ww present weather code
 1 cloud decreasing 45 fog
 2 sky not changing 50 intermittent light drizzle
 3 cloud increasing 60 intermittent slight rain
 10 mist 61 continuous slight rain
 21 recent rain
 VV visibility (00-50 metres/100, 94 very poor, 95 poor, 96 moderate, 97 good)
 Soil temperatures are for 0700GMT beneath bare soil (5, 10, 20cm) or grass (30, 50, 100cm)

09GMT observations
 Temp temperature (degC) RH relative humidity (%)
 E state of ground (00 dry, 10 moist, 20 wet, 40 frozen) SS snow depth (cm)
 Press air pressure (mb)

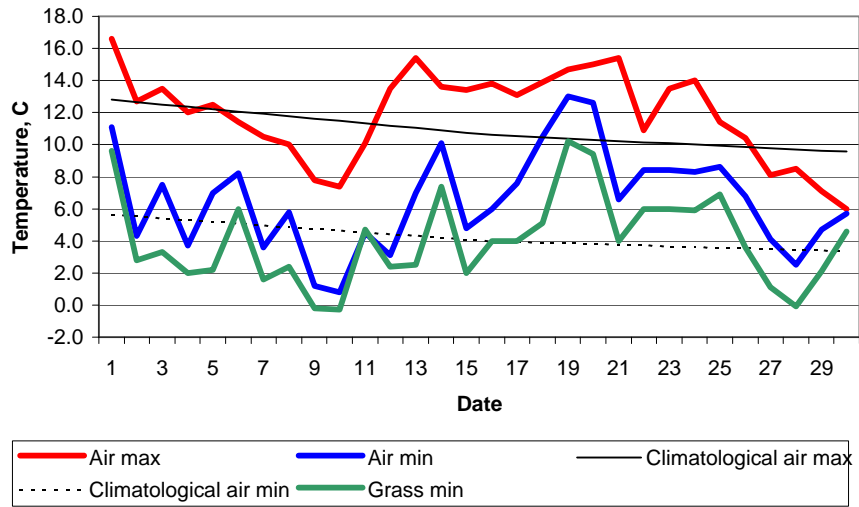
24 hour readings
 Max maximum temperature (degC) beginning 09GMT Min minimum temperature (degC) ending 09GMT
 Gmin grass minimum temperature (degC) ending 09GMT Rain precipitation beginning 09GMT
 Sun sunshine (hours) sunrise-sunset Rain hrs hours of rainfall (>0.1mm/h) 09-09GMT
 Fr. Hrs hours of air frost (00-24GMT) Pch Evap Piche evaporation (ml) beginning 09GMT

Days with
 S snow(5) or sleet(1) falling L 50% snow cover at 09GMT H hail or ice pellets
 T thunder heard G gale F fog at 09GMT

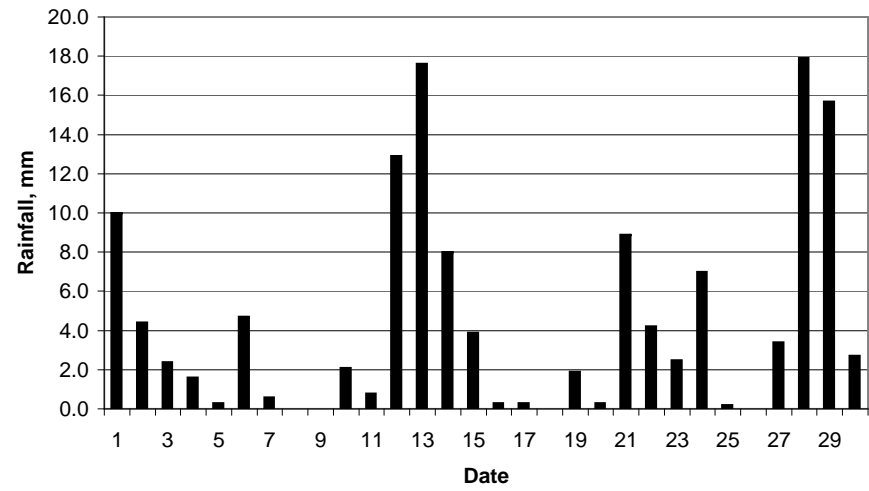
This information (and data for earlier months) is also available at <http://www.met.rdg.ac.uk/~brugge>



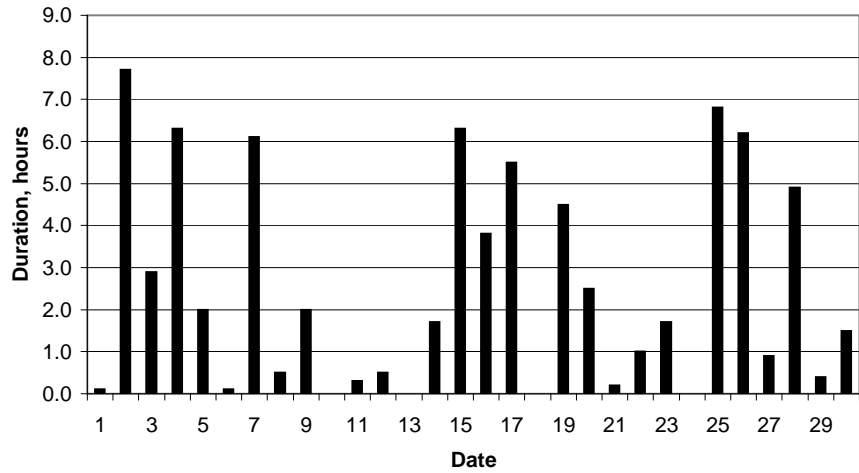
Daily temperature extremes



Daily rainfall



Daily sunshine



Daily evaporation

