

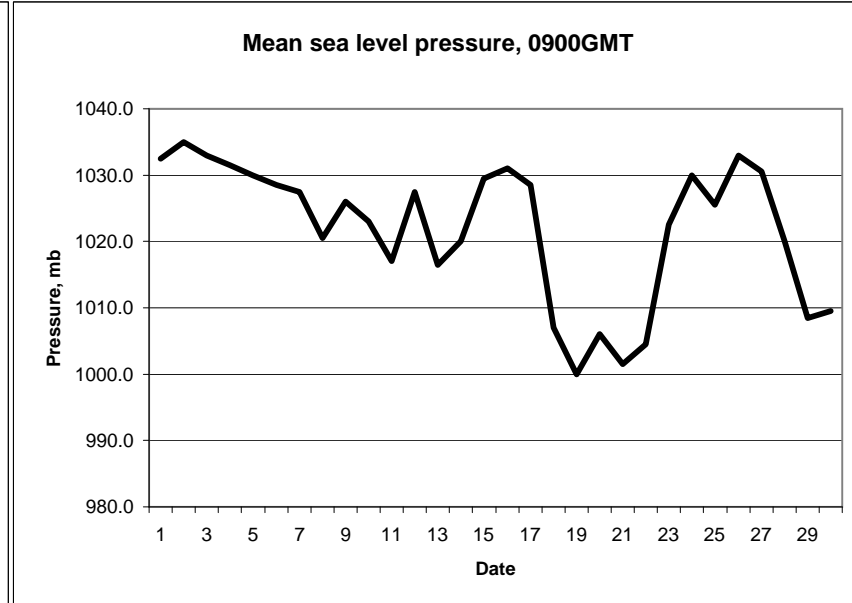
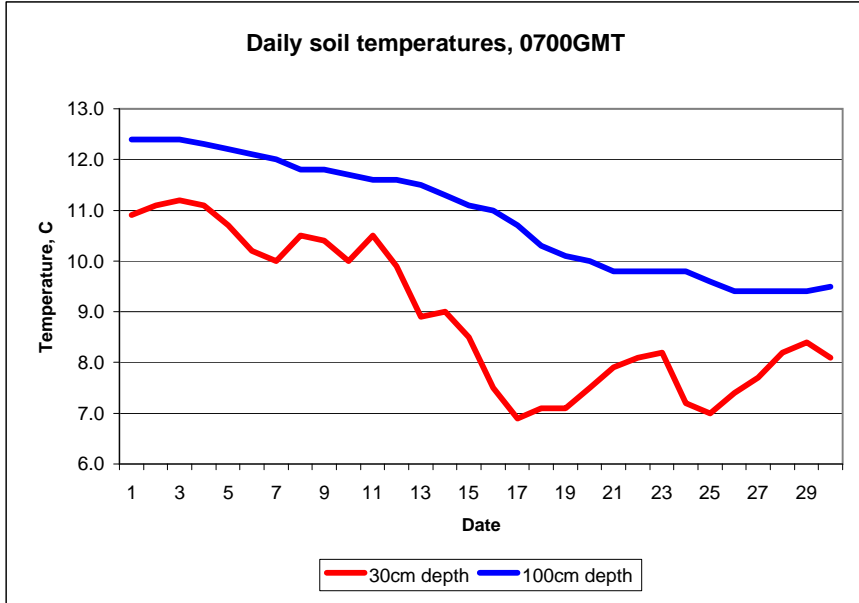
MAIDENHEAD METEOROLOGICAL OBSERVATIONS FOR NOVEMBER 2007

		0900GMT		Temperature			Soil temperatures (depth in cm)																Rain	Fr.	Pch									
DD	N	dd	ff	ww	VV	Temp	RH	Max	Min	Gmin	5	10	20	30	50	100	E	SS	Rain	Sun	S	L	H	T	G	F	Press	hrs	hrs	Evap				
01	8	23	02	02	97	14.9	93	17.6	6.7	4.2	10.4	10.1	10.5	10.9	11.3	12.4	10	0	0.0	3.5	0	0	0	0	0	0	1032.5	0.0	0.0	0.7	Number of			
02	6	23	02	02	96	9.7	98	17.1	6.9	4.2	9.5	9.8	10.6	11.1	11.5	12.4	10	0	0.0	4.4	0	0	0	0	0	0	1035.0	0.0	0.0	0.9	days with			
03	4	27	02	02	97	9.5	96	16.1	5.8	2.6	9.4	9.8	10.6	11.2	11.5	12.4	10	0	0.0	5.9	0	0	0	0	0	1033.0	0.0	0.0	0.9	2007 normal				
04	4	22	02	02	97	8.9	89	14.5	7.5	3.7	9.4	9.8	10.7	11.1	11.3	12.3	10	0	tr	6.7	0	0	0	0	0	1031.5	0.0	0.0	0.8	Snow/sleet falling				
05	9	00	00	45	02	4.3	98	11.1	1.8	0.2	7.3	7.9	9.2	10.7	11.3	12.2	10	0	1.0	0.7	0	0	0	0	0	1030.0	0.7	0.0	0.4	0 0.5				
06	1	36	02	02	97	8.4	84	12.4	4.3	1.5	7.3	7.9	9.2	10.2	11.0	12.1	10	0	0.0	7.6	0	0	0	0	0	1028.5	0.0	0.0	0.8	50% snow cover 09GMT				
07	6	28	05	02	97	9.7	78	14.1	6.5	1.8	7.5	8.2	9.1	10.0	10.8	12.0	10	0	0.0	1.3	0	0	0	0	0	1027.5	0.0	0.0	1.3	0 0.0				
08	7	24	05	02	97	12.0	70	15.6	9.7	5.7	10.0	9.9	10.1	10.5	10.7	11.8	10	0	4.5	1.1	0	0	0	0	0	1020.5	2.6	0.0	1.4	Hail or ice pellets				
09	7	35	09	02	97	7.5	74	11.2	5.5	2.4	7.7	7.9	9.2	10.4	10.8	11.8	10	0	0.2	5.2	0	0	0	0	0	1026.0	0.1	0.0	2.1	0 0.2				
10	7	27	13	02	97	11.2	93	14.5	7.5	4.6	8.8	8.8	9.2	10.0	10.6	11.7	10	0	tr	2.6	0	0	0	0	0	1023.0	0.0	0.0	1.4	Thunder				
11	8	27	13	60	97	12.0	78	13.1	10.3	6.6	9.4	9.4	9.8	10.5	10.7	11.6	10	0	0.4	2.2	0	0	0	0	0	1017.0	0.5	0.0	1.4	0 0.2				
12	4	27	02	02	97	2.5	98	8.6	0.9	-2.2	6.0	6.6	8.5	9.9	10.7	11.6	10	0	13.0	7.7	0	0	0	0	0	1027.5	1.4	0.0	0.9	Gale				
13	8	23	02	02	97	6.4	96	10.9	0.1	-3.0	6.1	6.1	7.9	8.9	10.2	11.5	10	0	1.1	0.2	0	0	0	0	0	1016.5	0.8	0.0	1.1	0 0.1				
14	7	32	09	02	97	7.0	87	9.3	6.4	2.4	7.1	7.2	8.0	9.0	9.7	11.3	10	0	0.0	4.1	0	0	0	0	0	1020.0	0.0	9.5	0.6	Fog at 09GMT				
15	1	33	02	02	96	0.6	93	10.6	-2.3	-4.4	4.0	4.8	6.7	8.5	9.3	11.1	10	0	0.0	8.6	0	0	0	0	0	1029.5	0.0	9.5	1.0	0 3.3				
16	2	27	02	02	97	-0.4	93	9.1	-3.2	-5.8	2.8	3.4	5.9	7.5	9.1	11.0	40	0	0.2	7.7	0	0	0	0	0	1031.0	0.2	4.8	1.3	Air frost				
17	8	22	02	02	86	2.7	96	7.4	-0.8	-5.4	3.9	4.4	5.2	6.9	8.3	10.7	10	0	0.4	0.0	0	0	0	0	0	1028.5	1.1	0.0	1.0	5 5.4				
18	8	15	09	03	97	7.0	78	7.1	2.7	0.6	5.6	5.6	6.1	7.1	8.2	10.3	10	0	13.6	0.0	0	0	0	0	0	1007.0	14.0	0.0	0.8	Ground frost				
19	6	13	05	02	97	6.9	95	10.0	2.4	1.1	6.1	5.7	6.2	7.1	8.1	10.1	10	0	25.8	1.9	0	0	0	0	0	1000.0	12.4	0.0	0.3	8 11.5				
20	8	09	05	02	95	6.7	96	9.8	5.6	1.6	6.2	6.3	6.9	7.5	8.2	10.0	10	0	3.1	0.0	0	0	0	0	0	1006.0	1.9	0.0	0.2	0.2mm precipitation				
21	6	09	02	02	96	7.5	98	12.1	6.1	1.8	7.2	7.3	7.6	7.9	8.2	9.8	10	0	14.1	4.7	0	0	0	0	0	1001.5	10.1	0.0	0.4	18 13.7				
22	8	22	02	21	96	7.7	96	10.8	7.3	5.2	6.7	7.1	7.6	8.1	8.4	9.8	20	0	0.0	3.5	0	0	0	0	0	1004.5	0.0	0.0	0.9	1.0mm precipitation				
23	0	33	09	02	97	3.8	86	6.8	3.3	0.4	5.5	6.1	7.4	8.2	8.5	9.8	10	0	0.0	7.6	0	0	0	0	0	1022.5	0.0	0.0	1.0	10 10.4				
24	7	24	02	03	97	-0.7	95	7.9	-2.8	-5.3	2.8	3.3	5.4	7.2	8.2	9.8	40	0	0.3	0.2	0	0	0	0	0	1030.0	1.0	4.6	1.0	5.0mm precipitation				
25	7	21	09	02	97	7.3	83	10.9	-0.7	-2.4	5.1	4.9	6.0	7.0	7.7	9.6	10	0	0.4	1.7	0	0	0	0	0	1025.5	1.0	0.0	0.8	5 4.9				
26	8	32	02	02	96	7.3	93	9.4	6.7	2.7	6.1	6.4	6.7	7.4	7.7	9.4	10	0	0.4	0.1	0	0	0	0	0	1033.0	2.0	0.0	0.3	No sunshine				
27	8	21	02	10	94	9.4	96	10.3	7.3	5.1	7.2	7.2	7.5	7.7	7.8	9.4	10	0	0.3	0.0	0	0	0	0	0	1030.5	1.2	0.0	0.2	4 10.1				
28	8	22	02	02	96	8.7	92	11.2	8.4	6.5	7.4	7.8	8.1	8.2	8.3	9.4	10	0	2.0	0.7	0	0	0	0	0	1020.0	2.5	0.0	0.7	A third consecutive				
29	7	27	02	01	96	8.8	96	11.5	6.8	2.6	7.9	7.8	8.2	8.4	8.5	9.4	10	0	0.1	5.4	0	0	0	0	0	1008.5	0.1	0.0	1.2	anticyclonic month, making				
30	8	23	02	50	95	10.6	94	13.8	3.3	-0.2	7.0	7.2	8.4	8.1	8.4	9.5	10	0	11.3	0.1	0	0	0	0	0	1009.5	5.1	0.0	1.2	this the second most				
Monthly means						7.3	90	11.5	4.3	1.3	6.9	7.2	8.1	8.9	9.5	10.9											1021.9							
Monthly totals																92.2	95.4											58.7	28.4	27.0				
Highest values						14.9			17.6	10.3	6.6	10.4	10.1	10.7	11.2	11.5	12.4											25.8	8.6	14.0	9.5	2.1		
Lowest values						-0.7	70	6.8	-3.2	-5.8	2.8	3.3	5.2	6.9	7.7	9.4																		
1971-2000 monthly climatological averages						9.0	90	10.6	4.0	1.7	6.4	6.8	7.8	8.7	9.1	10.5											61.0	62.1	1015.2	55.6	28.8	21.8		

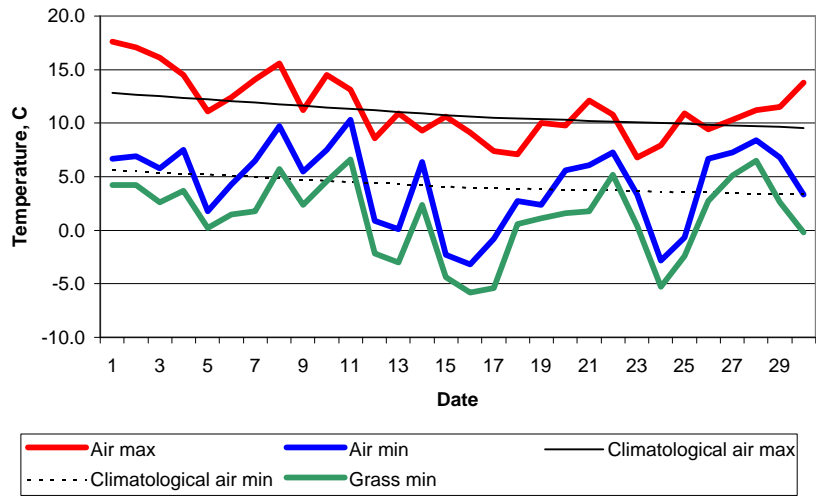
Number of days with 2007 normal
Snow/sleet falling 0 0.5
50% snow cover 09GMT 0 0.0
Hail or ice pellets 0 0.2
Thunder 0 0.2
Gale 0 0.1
Fog at 09GMT 0 3.3
Air frost 5 5.4
Ground frost 8 11.5
0.2mm precipitation 18 13.7
1.0mm precipitation 10 10.4
5.0mm precipitation 5 4.9
No sunshine 4 10.1
A third consecutive anticyclonic month, making this the second most anticyclonic autumn since 1971 (after 1978). Sunnier and slightly warmer than average but with some cold mornings. There were only four sunless days but more rain days than normal in a rather wet month.

Key
 DD: date
 07GMT observations
 N cloud cover (oktas, 9=obscured) dd wind direction (degrees/10)
 ff wind speed (knots)
 ww present weather code
 1 cloud decreasing 45 fog
 2 sky not changing 50 intermittent light drizzle
 3 cloud increasing 60 intermittent slight rain
 10 mist 61 continuous slight rain
 21 recent rain
 VV visibility (00-50 metres/100, 94 very poor, 95 poor, 96 moderate, 97 good)
 Soil temperatures are for 0700GMT beneath bare soil (5, 10, 20cm) or grass (30, 50, 100cm)
 09GMT observations
 Temp temperature (degC) RH relative humidity (%)
 E state of ground (00 dry, 10 moist, 20 wet, 40 frozen) SS snow depth (cm)
 Press air pressure (mb)
 24 hour readings
 Max maximum temperature (degC) beginning 09GMT Min minimum temperature (degC) ending 09GMT
 Gmin grass minimum temperature (degC) ending 09GMT Rain precipitation beginning 09GMT
 Sun sunshine (hours) sunrise-sunset Rain hrs hours of rainfall (>0.1mm/h) 09-09GMT
 Fr. Hrs hours of air frost (00-24GMT) Pch Evap Piche evaporation (ml) beginning 09GMT
 Days with
 S snow(5) or sleet(1) falling L 50% snow cover at 09GMT H hail or ice pellets
 T thunder heard G gale F fog at 09GMT

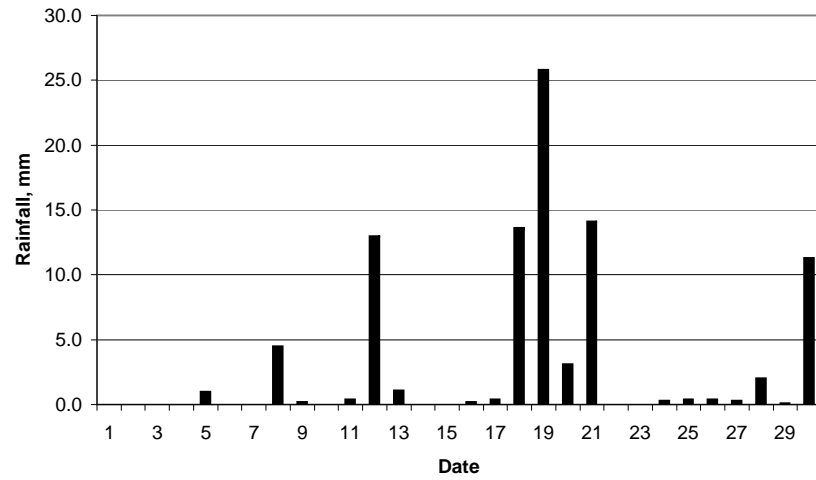
This information (and data for earlier months) is also available at <http://www.met.rdg.a.uk/~brugge>



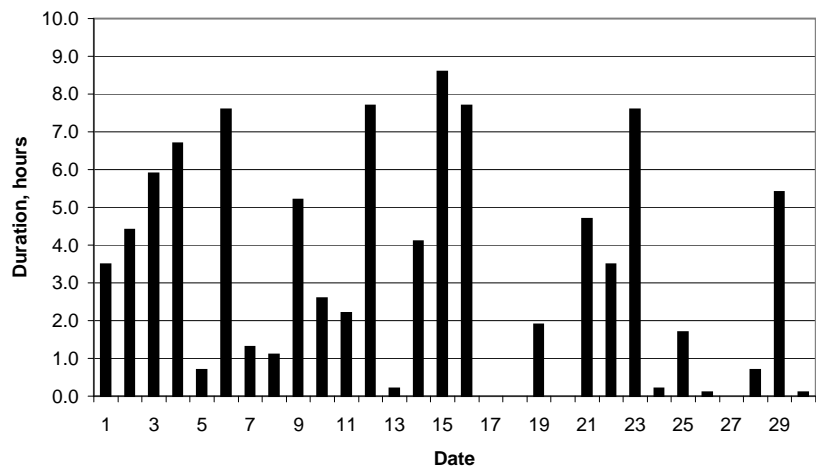
Daily temperature extremes



Daily rainfall



Daily sunshine



Daily evaporation

