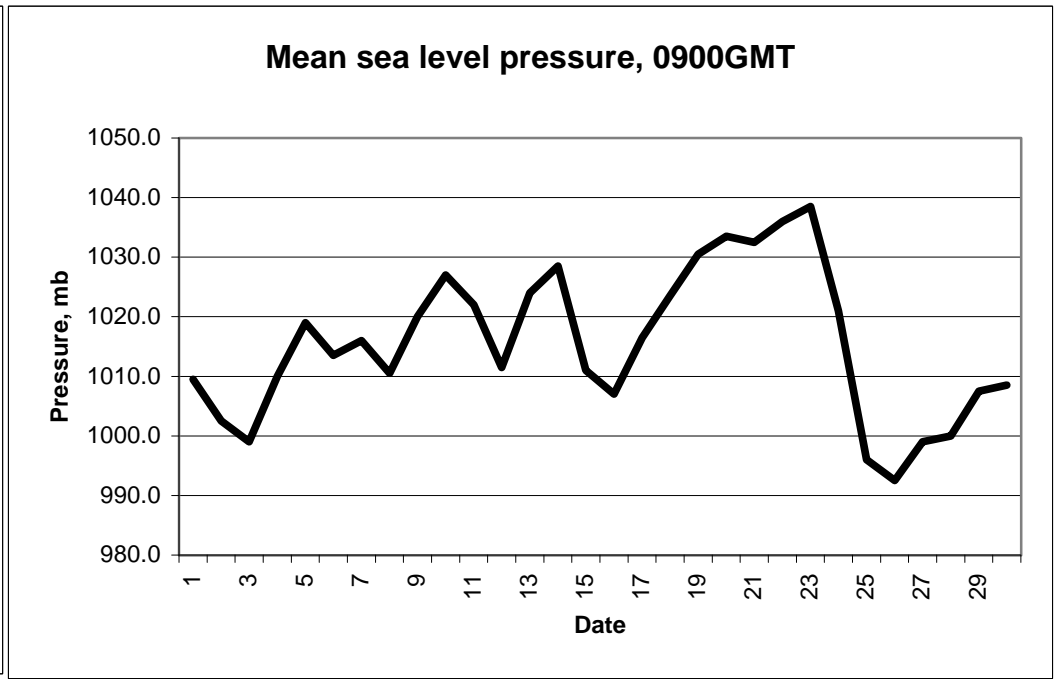
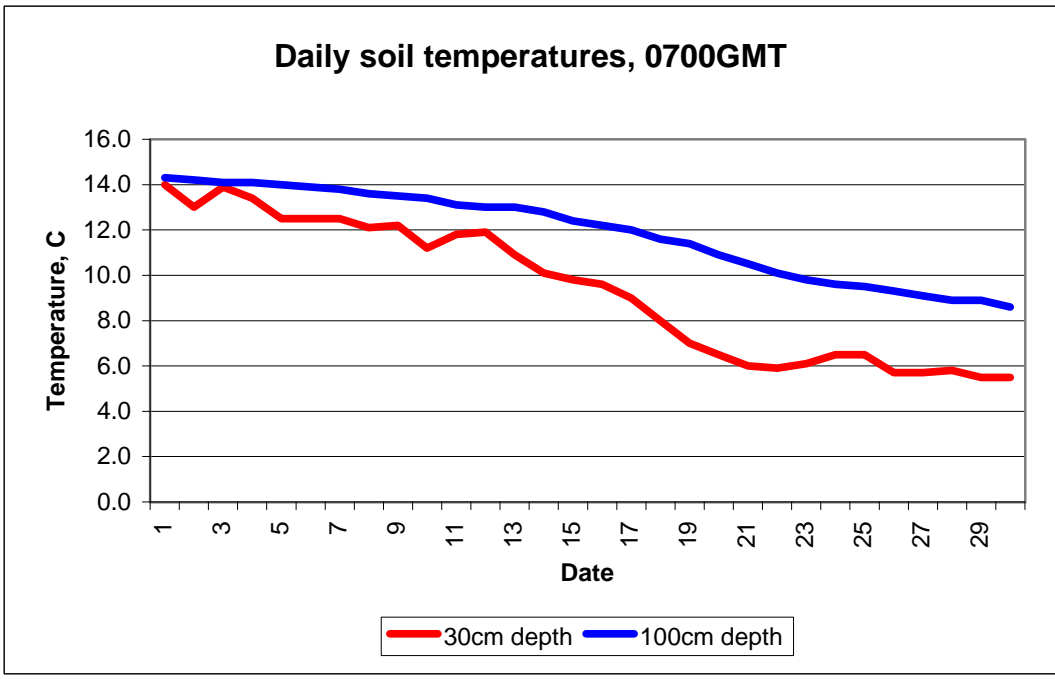


MAIDENHEAD METEOROLOGICAL OBSERVATIONS FOR NOVEMBER 2005

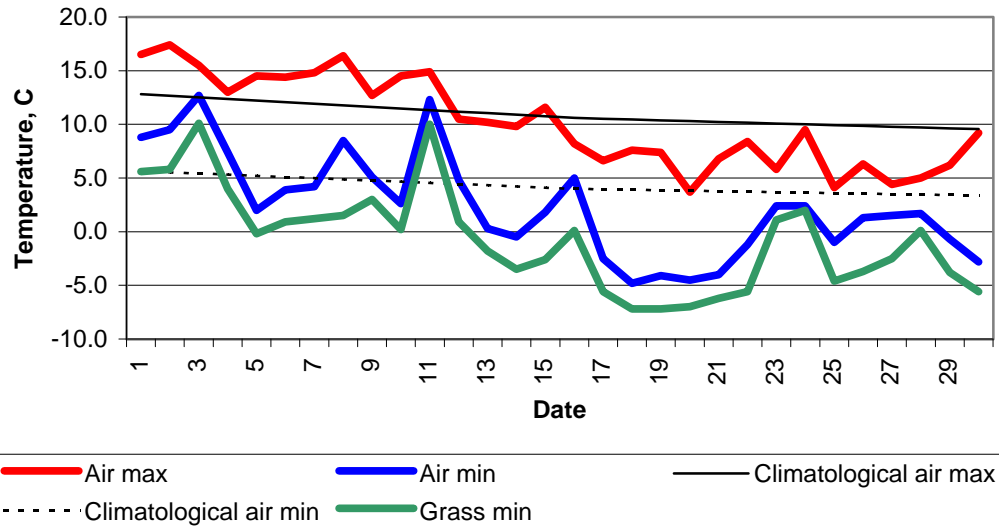
DD	N	dd	ff	ww	VV	0900GMT Temp	RH	Temperature Max	Min	Gmin	Soil temperatures (depth in cm)						E	SS	Rain	Sun	S	L	H	T	G	F	Press	Rain hrs	Fr. hrs	Pch Evap			
01	1	21	02	01	97	9.5	96	16.5	8.8	5.6	11.7	12.3	13.0	14.0	14.0	14.3	10	0	7.0	7.5	0	0	0	0	0	0	1009.5	3.8	0.0	1.3	Number of		
02	8	23	05	02	97	16.5	95	17.4	9.5	5.8	13.4	12.8	12.9	13.0	13.7	14.2	10	0	14.5	0.0	0	0	0	0	0	0	1002.5	8.0	0.0	0.0	days with		
03	4	22	19	01	97	14.2	83	15.5	12.7	10.1	13.1	13.4	13.7	13.9	13.8	14.1	10	0	1.0	0.3	0	0	0	0	0	0	999.0	0.9	0.0	1.3	2005 normal		
04	1	27	02	02	97	9.7	84	13.0	7.4	4.0	10.3	11.0	12.4	13.4	13.6	14.1	10	0	0.0	6.4	0	0	0	0	0	0	1010.0	0.0	0.0	1.2	Snow/sleet falling		
05	6	22	02	03	96	3.9	99	14.5	2.0	-0.2	7.7	8.7	10.8	12.5	13.1	14.0	10	0	1.0	2.5	0	0	0	0	0	0	1019.0	1.2	0.0	1.9	0 0.5		
06	8	18	09	60	97	14.3	92	14.4	3.9	0.9	12.6	12.3	12.1	12.5	12.7	13.9	10	0	6.5	0.0	0	0	0	0	0	0	1013.5	5.3	0.0	0.1	50% snow cover 09GMT		
07	1	20	05	02	97	8.5	96	14.8	4.2	1.2	8.9	9.6	11.2	12.5	12.7	13.8	10	0	tr	7.3	0	0	0	0	0	0	1016.0	0.0	0.0	1.2	0 0.0		
08	7	22	09	02	97	14.8	86	16.4	8.5	1.5	11.2	11.1	11.4	12.1	13.5	13.6	10	0	3.5	2.2	0	0	0	0	0	0	1010.5	4.0	0.0	1.5	Hail or ice pellets		
09	4	27	02	01	97	6.0	98	12.7	5.1	3.0	9.3	9.9	11.2	12.2	12.4	13.5	10	0	0.3	6.4	0	0	0	0	0	0	1020.0	1.2	0.0	0.7	1 0.2		
10	8	23	09	60	97	12.3	92	14.5	2.6	0.2	9.1	8.9	9.7	11.2	12.2	13.4	10	0	0.0	0.0	0	0	0	0	0	0	1027.0	0.0	0.0	0.9	Thunder		
11	8	22	09	02	97	13.9	80	14.9	12.3	10.0	11.8	11.7	11.6	11.8	11.9	13.1	10	0	1.5	0.7	0	0	0	0	0	0	1022.0	1.0	0.0	1.3	0 0.2		
12	7	29	02	02	97	7.6	84	10.5	4.8	0.9	8.8	9.4	10.8	11.9	12.0	13.0	10	0	0.0	2.2	0	0	0	0	0	0	1011.5	0.0	0.0	0.5	Gale		
13	7	33	09	02	97	7.0	94	10.2	0.3	-1.8	7.1	7.2	8.9	10.9	11.7	13.0	10	0	tr	3.3	0	0	0	0	0	0	1024.0	0.0	0.0	0.4	0 0.1		
14	1	35	02	02	95	1.8	99	9.8	-0.5	-3.5	5.4	6.1	8.3	10.1	11.1	12.8	10	0	0.9	6.1	0	0	0	0	0	0	1028.5	1.2	1.7	0.7	Fog at 09GMT		
15	8	20	05	21	95	9.8	97	11.6	1.8	-2.6	8.1	7.8	8.3	9.8	10.5	12.4	10	0	0.0	0.9	0	0	0	0	0	0	1011.0	0.0	0.0	0.5	1 3.3		
16	8	36	09	02	97	7.2	84	8.2	5.0	0.1	7.2	7.3	8.4	9.6	10.3	12.2	10	0	0.0	4.4	0	0	0	0	0	0	1007.0	0.0	0.0	0.9	Air frost		
17	0	27	02	02	97	0.6	98	6.6	-2.5	-5.6	3.8	4.5	7.0	9.0	10.1	12.0	10	0	0.0	7.4	0	0	0	0	0	0	1016.5	0.0	8.5	0.8	10 5.4		
18	0	32	02	02	97	0.8	95	7.6	-4.8	-7.2	2.2	2.9	5.4	8.0	9.4	11.6	10	0	0.0	6.9	0	0	0	0	0	0	1023.5	0.0	9.5	1.3	Ground frost		
19	0	00	00	44	05	-0.6	96	7.4	-4.1	-7.2	2.1	2.6	4.8	7.0	8.5	11.4	40	0	0.0	7.4	0	0	0	0	0	0	1030.5	0.0	12.0	1.2	15 11.5		
20	0	00	00	44	06	-3.0	96	3.7	-4.5	-7.0	1.6	2.1	4.1	6.5	7.8	10.9	40	0	0.0	2.7	0	0	0	0	1	1033.5	0.0	11.7	0.5	0.2mm precipitation			
21	1	04	02	10	94	-1.2	92	6.8	-4.0	-6.2	1.4	1.7	3.8	6.0	7.4	10.5	40	0	0.0	6.4	0	0	0	0	0	0	1032.5	0.0	10.0	1.3	12 13.7		
22	8	33	02	10	94	3.4	99	8.4	-1.2	-5.6	3.3	3.2	3.9	5.9	7.0	10.1	10	0	0.0	0.8	0	0	0	0	0	0	1036.0	0.0	0.0	0.5	1.0mm precipitation		
23	8	00	00	44	04	2.9	98	5.8	2.4	1.1	4.4	4.4	5.0	6.1	7.0	9.8	10	0	0.0	0.0	0	0	0	0	0	0	1038.5	0.0	0.0	0.2	8 10.4		
24	8	25	02	02	94	5.8	94	9.5	2.4	2.0	4.9	4.9	5.3	6.5	7.0	9.6	10	0	2.0	0.1	0	0	4	0	0	0	1021.0	1.7	0.0	0.9	5.0mm precipitation		
25	0	31	09	02	97	1.3	99	4.1	-1.0	-4.6	2.1	2.4	4.5	6.5	7.1	9.5	40	0	0.0	3.3	0	0	0	0	0	0	996.0	0.0	4.4	0.6	3 4.9		
26	5	36	09	02	97	4.1	89	6.3	1.3	-3.7	2.7	3.1	4.0	5.7	6.6	9.3	10	0	0.2	0.6	0	0	0	0	0	0	992.5	1.4	0.0	0.9	No sunshine		
27	7	32	02	80	97	2.5	93	4.4	1.5	-2.5	2.8	2.9	4.1	5.7	6.4	9.1	10	0	tr	0.1	0	0	0	0	0	0	999.0	0.0	0.0	0.4	5 10.1		
28	8	36	02	02	97	3.5	93	5.0	1.7	0.1	4.3	4.1	4.9	5.8	6.3	8.9	10	0	0.1	0.2	0	0	0	0	0	0	1000.0	0.1	0.0	0.6	Unusually mild until the		
29	4	27	02	02	97	1.0	94	6.2	-0.7	-3.8	2.8	3.1	4.6	5.5	6.4	8.9	10	0	tr	4.1	0	0	0	0	0	0	1007.5	0.0	1.4	0.5	12th, then a notable		
30	7	29	02	03	97	0.4	95	9.2	-2.8	-5.6	1.7	2.0	3.9	5.5	6.3	8.6	40	0	0.5	0.0	0	0	0	0	0	0	1008.5	1.5	7.0	0.3	change to more wintry		
Monthly means						6.0	93	10.2	2.4	-0.7	6.5	6.8	8.0	9.4	10.1	11.9											1015.6				temperatures, although no		
Monthly totals																				39.0	90.2							31.3	66.2	24.4	with little precipitation after		
Highest values						16.5		17.4	12.7	10.1	13.4	13.4	13.7	14.0	14.0	14.3			14.5	7.5								8.0	12.0	1.9	the 11th, and also a very		
Lowest values						-3.0	80	3.7	-4.8	-7.2	1.4	1.7	3.8	5.5	6.3	8.6																	sunny one. Nearly twice as
1971-2000 monthly climatological averages																																	as normal.
						90	10.6	4.0	1.7	6.4	6.8	7.8	8.7	9.1	10.5			61.0	62.1									1015.2	55.6	28.8	21.8		

Key
 DD: date
 07GMT observations
 N cloud cover (oktas, 9=obscured) dd wind direction (degrees/10)
 ff wind speed (knots)
 ww present weather code
 1 cloud decreasing 21 recent rain
 2 sky not changing 50 intermittent slight drizzle
 3 cloud increasing 60 intermittent slight rain
 10 mist 61 continuous slight rain
 20 recent drizzle
 VV visibility (00-50 metres/100, 94 very poor, 95 poor, 96 moderate, 97 good)
 Soil temperatures are for 0700GMT beneath bare soil (5, 10, 20cm) or grass (30, 50, 100cm)
 09GMT observations
 Temp temperature (degC) RH relative humidity (%)
 E state of ground (00 dry, 10 moist, 20 wet, 40 frozen) SS snow depth (cm)
 Press air pressure (mb)
 24 hour readings
 Max maximum temperature (degC) beginning 09GMT Min minimum temperature (degC) ending 09GMT
 Gmin grass minimum temperature (degC) ending 09GMT Rain precipitation beginning 09GMT
 Sun sunshine (hours) sunrise-sunset Rain hrs hours of rainfall (>0.1mm/h) 09-09GMT
 Fr. Hrs hours of air frost (00-24GMT) Pch Evap Piche evaporation (ml) beginning 09GMT
 Days with
 S snow(5) or sleet(1) falling L 50% snow cover at 09GMT H hail or ice pellets
 T thunder heard G gale F fog at 09GMT

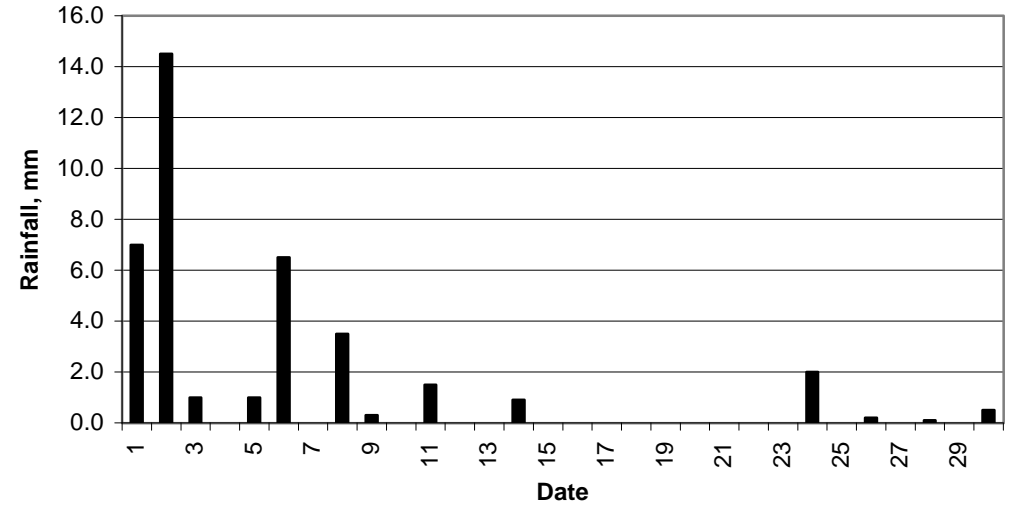
This information (and data for earlier months) is also available at <http://www.met.rdg.a.uk/~brugge>



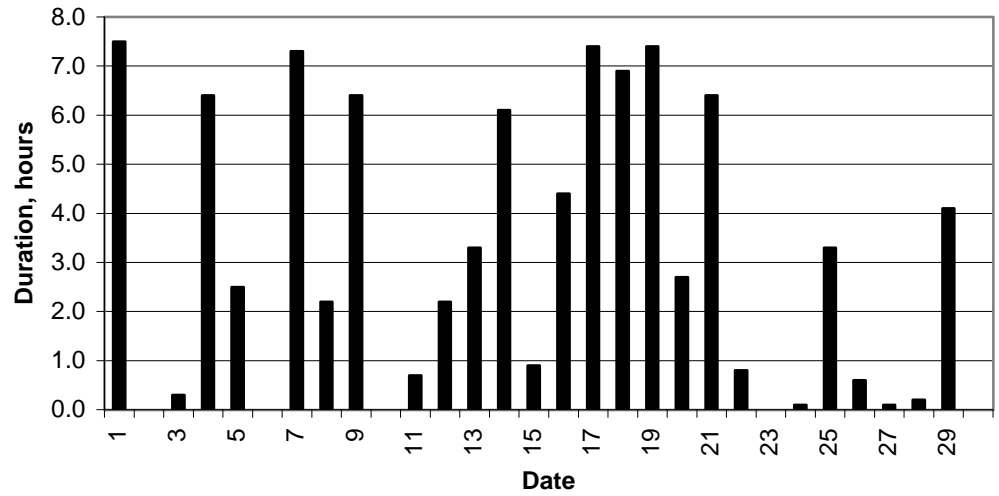
Daily temperature extremes



Daily rainfall



Daily sunshine



Daily evaporation

