

MAIDENHEAD METEOROLOGICAL OBSERVATIONS FOR MAY 2018

DD	N	dd	ff	ww	VV	0900GMT		Temperature				Soil temperatures (depth in cm)						E	SS	Rain	Sun	S	L	H	T	G	F	Press	Rain	Fr.	Pch	
						Temp	RH	Max	Min	Gmin	5	10	20	30	60	100	hrs												hrs	Evap		
01	0	31	02	02	97	10.4	62	15.9	1.2	0.0	5.9	6.1	8.4	9.7	10.0	10.5	10	0	3.4	10.4	0	0	0	0	0	0	0	1010.0	3.0	0.0	2.4	Number of days with 2018 normal Snow/sleet falling 0 0.0 50% snow cover 09GMT 0 0.0 Hail or ice pellets 0 0.6 Thunder 5 2.0 Gale 0 0.0 Fog at 09GMT 0 0.0 Air frost 0 0.1 Ground frost 0 1.3 0.2mm precipitation 8 12.4 1.0mm precipitation 8 9.2 5.0mm precipitation 3 3.2 No sunshine 1 2.6 A few hot spells and a very sunny first three weeks. The warmest May (with 2008) since 1992 with the highest May temperature since 2008. Slightly wetter than average due partly to thundery activity in final week. Equal highest number of May thunder days since 8 days in 1954. The sunniest May since 1992 when 267 h were measured and also short of the 305.7 h recorded in 1989.
02	8	18	05	21	97	10.0	91	15.2	8.8	4.4	9.6	9.8	10.2	10.3	10.0	10.3	10	0	3.0	4.5	0	0	0	0	0	0	1002.0	1.4	0.0	1.0		
03	5	27	02	02	97	9.1	95	17.9	1.9	0.0	7.3	7.5	9.2	10.2	10.0	10.2	10	0	0.0	9.1	0	0	0	0	0	0	1019.5	0.0	0.0	2.4		
04	7	31	02	02	97	15.2	63	21.4	7.6	4.9	10.9	10.9	11.2	11.0	10.3	10.1	10	0	0.0	8.7	0	0	0	0	0	0	1023.0	0.0	0.0	2.2		
05	1	09	02	02	97	17.3	48	24.1	6.4	4.9	10.7	11.1	12.0	12.0	11.0	10.2	03	0	0.0	13.5	0	0	0	0	0	0	1025.5	0.0	0.0	3.9		
06	0	09	02	02	97	19.2	52	26.3	6.2	4.9	10.8	11.1	12.5	12.5	11.5	10.4	03	0	0.0	13.7	0	0	0	0	0	0	1023.5	0.0	0.0	4.2		
07	0	09	02	02	97	21.2	49	28.7	9.6	7.7	12.8	12.8	13.6	13.4	12.1	10.6	03	0	0.0	13.3	0	0	0	0	0	0	1019.0	0.0	0.0	4.0		
08	0	22	02	02	97	20.4	61	26.1	9.9	8.1	13.3	13.9	14.7	14.3	13.0	11.0	03	0	0.0	12.7	0	0	0	0	0	0	1010.0	0.0	0.0	3.0		
09	4	27	02	02	97	16.7	64	20.5	7.1	5.6	12.7	13.0	14.5	14.5	13.5	11.3	03	0	3.8	9.6	0	0	0	0	0	0	1010.0	2.4	0.0	2.5		
10	1	31	09	01	97	14.5	63	18.4	9.2	9.0	13.3	13.8	15.0	14.7	13.5	11.6	10	0	0.0	11.4	0	0	0	0	0	0	1014.5	0.0	0.0	2.5		
11	6	18	05	02	97	15.0	57	18.0	4.7	4.3	12.1	13.2	13.8	14.3	13.6	11.8	03	0	0.0	6.1	0	0	0	0	0	0	1016.0	0.0	0.0	2.9		
12	8	27	27	02	97	14.1	77	15.3	9.3	4.4	13.8	13.6	14.2	14.0	13.3	11.9	03	0	4.6	0.1	0	0	0	0	0	0	1013.0	5.3	0.0	0.8		
13	7	27	27	02	97	13.3	78	19.0	7.8	3.5	12.3	12.3	13.1	13.5	13.0	12.0	10	0	0.0	8.5	0	0	0	0	0	0	1015.0	0.0	0.0	2.1		
14	0	36	36	05	97	16.7	49	21.8	7.3	5.0	10.9	11.2	13.0	14.0	13.0	12.0	03	0	0.0	12.3	0	0	0	0	0	0	1020.5	0.0	0.0	4.2		
15	1	04	04	05	97	18.6	47	24.4	7.8	6.6	12.4	12.7	14.0	14.0	13.2	12.0	03	0	0.0	13.4	0	0	0	0	0	0	1020.5	0.0	0.0	4.4		
16	7	36	36	09	97	15.0	71	15.9	11.1	9.3	14.1	13.9	14.8	14.5	13.6	12.0	03	0	0.0	0.6	0	0	0	0	0	0	1024.5	0.0	0.0	2.2		
17	2	04	04	05	97	12.7	58	18.5	6.2	6.2	11.0	11.6	13.1	13.7	13.3	12.2	90	0	0.0	13.7	0	0	0	0	0	0	1028.0	0.0	0.0	2.7		
18	3	36	36	05	97	12.5	63	19.4	4.2	2.0	10.9	11.4	13.1	13.8	13.4	12.2	90	0	0.0	13.0	0	0	0	0	0	0	1027.0	0.0	0.0	2.4		
19	0	04	04	02	97	17.2	54	22.7	5.2	4.2	12.7	12.2	13.5	14.0	13.4	12.2	90	0	0.0	13.8	0	0	0	0	0	0	1025.0	0.0	0.0	3.0		
20	1	09	09	02	97	16.9	66	22.6	7.7	5.6	13.5	14.0	14.7	14.5	13.8	12.3	90	0	0.0	13.0	0	0	0	0	0	0	1022.5	0.0	0.0	3.1		
21	3	09	09	05	97	18.6	62	23.9	8.4	7.0	13.3	13.7	15.0	15.0	14.2	12.4	90	0	0.0	6.7	0	0	0	0	0	0	1016.5	0.0	0.0	3.0		
22	3	36	36	05	97	18.9	56	23.9	11.7	9.1	14.4	14.7	15.7	15.3	14.3	12.6	90	0	0.0	13.7	0	0	0	0	0	0	1016.0	0.0	0.0	3.4		
23	8	36	36	09	96	13.5	74	20.7	10.7	8.1	14.9	15.0	15.9	15.5	14.6	12.8	90	0	10.0	7.3	0	0	0	0	0	0	1024.0	5.8	0.0	2.2		
24	8	04	04	05	96	12.0	95	18.4	10.8	12.0	13.9	14.4	15.6	15.6	14.7	12.9	10	0	4.7	0.2	0	0	0	1	0	0	1021.5	4.8	0.0	0.7		
25	8	31	02	02	97	14.4	93	17.5	12.0	13.4	15.1	15.1	15.4	15.1	14.4	13.0	10	0	0.1	1.5	0	0	0	1	0	0	1018.0	0.1	0.0	0.5		
26	8	04	02	02	96	16.6	93	25.2	13.9	12.2	15.1	15.1	15.3	15.0	14.2	13.1	10	0	7.9	9.4	0	0	0	1	0	0	1019.0	3.2	0.0	2.3		
27	7	09	02	02	97	19.5	82	27.1	15.1	14.9	16.6	16.5	16.7	16.1	14.7	13.1	10	0	tr	9.1	0	0	0	1	0	0	1015.0	0.0	0.0	1.9		
28	8	36	02	02	96	17.3	90	25.3	15.2	14.4	17.5	17.6	17.4	16.7	15.4	13.2	10	0	tr	6.5	0	0	0	0	0	0	1018.5	0.0	0.0	1.7		
29	8	04	09	02	97	16.4	82	17.8	14.3	14.0	16.6	16.7	17.2	17.0	15.7	13.5	03	0	16.5	0.1	0	0	0	1	0	0	1017.0	6.5	0.0	0.6		
30	8	09	02	21	95	14.1	97	18.2	13.5	14.0	15.5	15.5	16.0	16.2	15.5	13.6	10	0	tr	0.0	0	0	0	0	0	0	1013.5	0.0	0.0	0.4		
31	8	00	00	02	94	18.2	94	23.9	14.1	12.0	16.2	16.1	16.2	15.9	15.1	13.8	10	0	tr	2.9	0	0	0	0	0	0	1015.0	0.0	0.0	1.3		
Monthly means						15.7	71	21.1	9.0	7.5	12.9	13.1	14.0	14.1	13.3	12.0												1018.2				
Monthly totals																				54.0	258.8							32.5	0.0	73.9		
Highest values						21.2		28.7	15.2	14.9	17.5	17.6	17.4	17.0	15.7	13.8			16.5	13.8								6.5	0.0	4.4		
Lowest values						9.1	47	15.2	1.2	0.0	5.9	6.1	8.4	9.7	10.0	10.1																
1981-2010 monthly climatological averages						74	18.0	8.4	6.1	11.5	11.7	12.8	12.9	12.1	11.1						53.0	191.6							1015.8	38.0	0.1	67.1

Key

DD: date

07GMT observations

N	cloud cover (oktas, 9=obscured)	dd	wind direction (degrees/10)
ff	wind speed (knots)		
ww	present weather code		
1	cloud decreasing	50	intermittent slight drizzle
2	sky not changing	60	intermittent slight rain
3	cloud increasing	63	continuous moderate rain
21	recent rain shower	80	slight rain hower
VV	visibility (00-50 metres/100, 94 very poor, 95 poor, 96 moderate, 97 good)		

Soil temperatures are for 0700GMT beneath bare soil (5, 10, 20cm) or grass (30, 50, 100cm)

09GMT observations

Temp	temperature (degC)	RH	relative humidity (%)
E	state of ground (00 dry, 10 moist, 20 wet, 90 cracked)	SS	snow depth (cm)
Press	air pressure (mb)		

24 hour readings

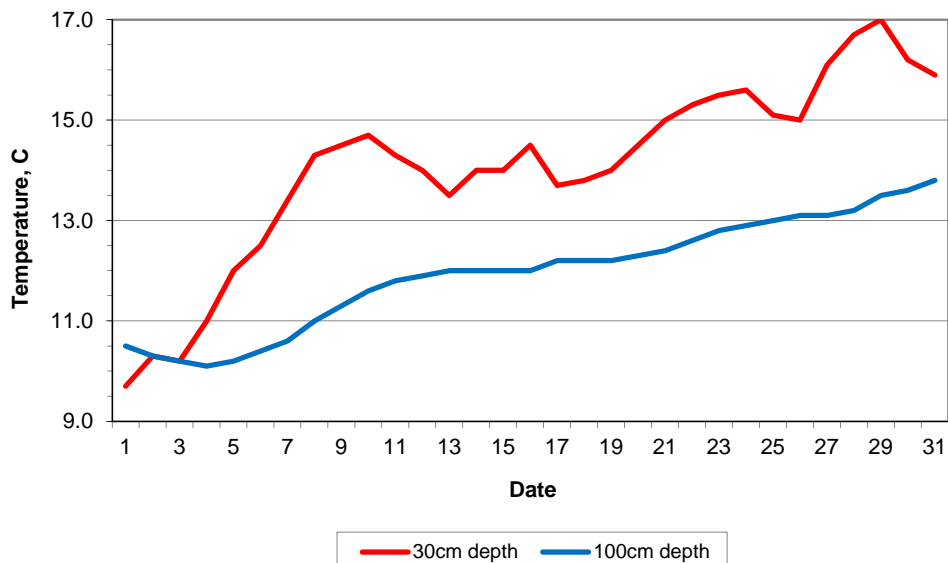
Max	maximum temperature (degC) beginning 09GMT	Min	minimum temperature (degC) ending 09GMT
Gmin	grass minimum temperature (degC) ending 09GMT	Rain	precipitation beginning 09GMT
Sun	sunshine (hours) sunrise-sunset	Rain hrs	hours of rainfall (>0.1mm/h) 09-09GMT
Fr. Hrs	hours of air frost (00-24GMT)	Pch Evap	Piche evaporation (ml) beginning 09GMT

Days with

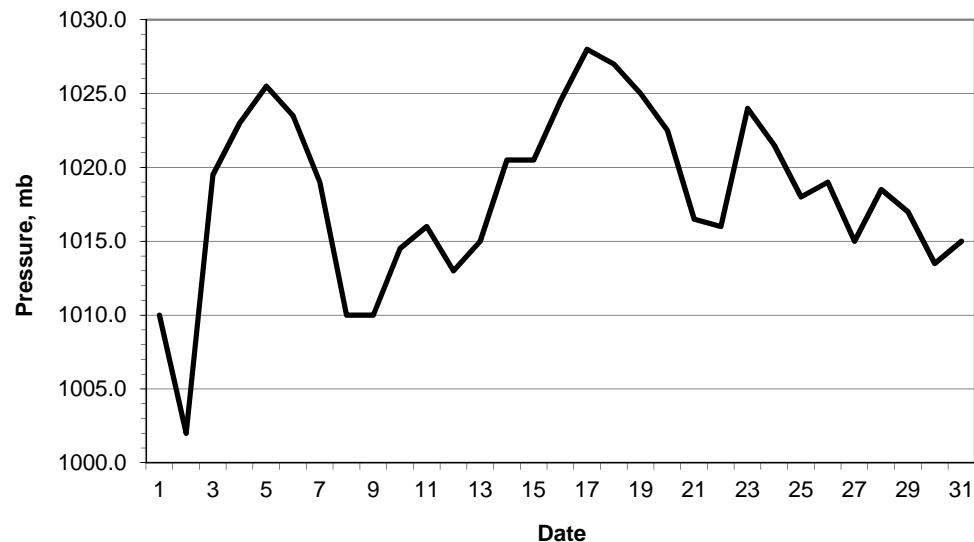
S	snow(5) or sleet(1) falling	L	50% snow cover at 09GMT	H	hail or ice pellets
T	thunder heard	G	gale	F	fog at 09GMT

This information (and data for earlier months) is also available at <http://www.met.rdg.ac.uk/~brugge>

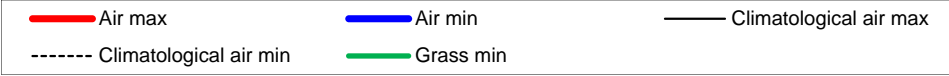
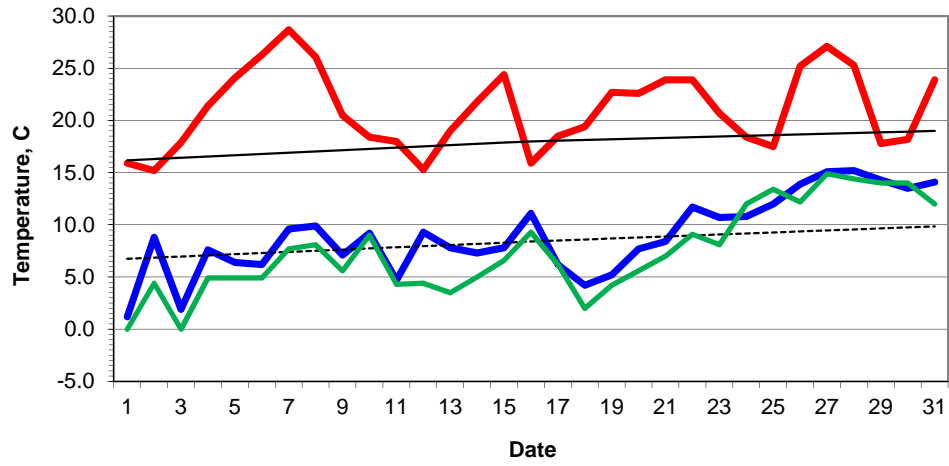
Daily soil temperatures, 0700GMT



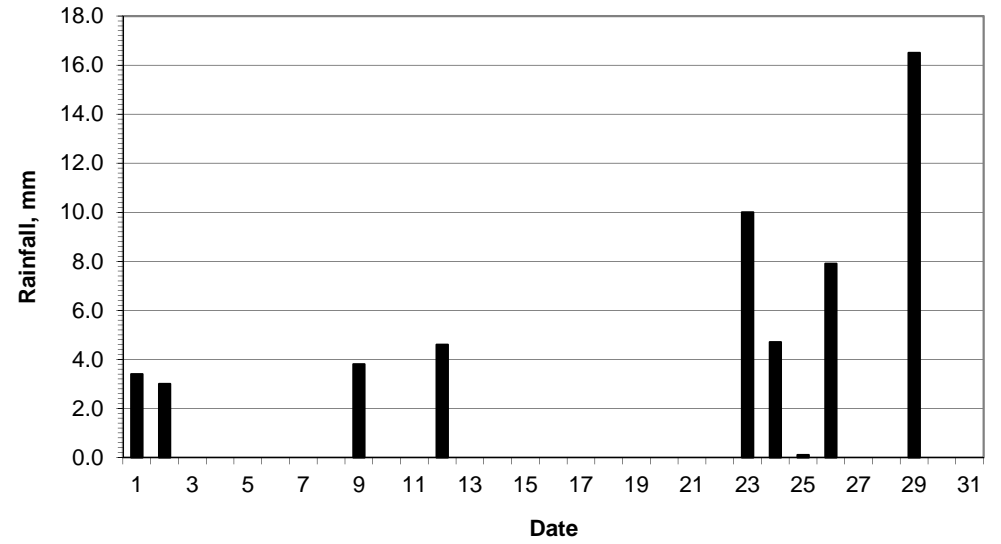
Mean sea level pressure, 0900GMT



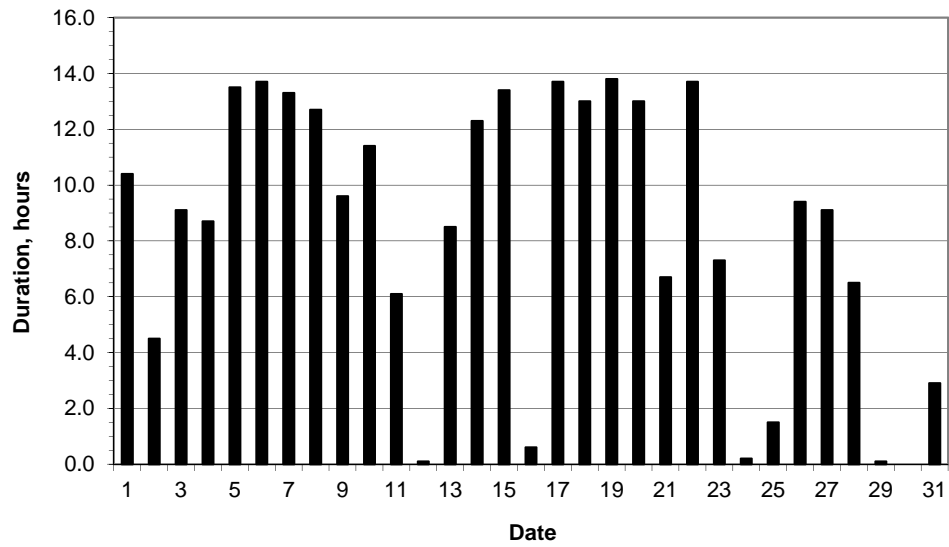
Daily temperature extremes



Daily rainfall



Daily sunshine



Daily evaporation

