

MAIDENHEAD METEOROLOGICAL OBSERVATIONS FOR MAY 2016

DD	N	dd	ff	ww	VV	0900GMT		Temperature				Soil temperatures (depth in cm)						E	SS	Rain	Sun	S	L	H	T	G	F	Press	Rain	Fr.	Pch		
						Temp	RH	Max	Min	Gmin	5	10	20	30	60	100	hrs												hrs	Evap			
01	7	22	05	02	97	12.0	53	17.5	0.0	-2.8	6.0	8.0	8.6	9.7	9.1	9.3	10	0	tr	8.5	0	0	0	0	0	0	0	1028.5	0.0	0.0	2.6	Number of	
02	8	22	05	02	97	13.2	78	18.2	10.7	8.7	6.3	8.0	9.3	10.5	9.1	9.3	10	0	0.5	3.0	0	0	0	0	0	0	1020.0	0.7	0.0	2.2	days with		
03	0	27	05	02	97	12.8	51	16.6	3.5	0.5	7.5	8.1	9.8	10.5	9.1	9.4	10	0	0.0	9.0	0	0	0	0	0	0	1025.0	0.0	0.0	2.2	2016		
04	1	18	02	02	97	14.8	48	18.8	2.4	-1.1	7.2	8.2	10.0	10.7	9.6	9.6	00	0	0.0	13.5	0	0	0	0	0	0	1026.0	0.0	0.0	4.4	snow/sleet falling		
05	2	18	02	02	97	16.4	47	21.5	3.2	-0.4	8.2	8.7	9.3	11.0	10.2	9.6	00	0	0.0	13.3	0	0	0	0	0	0	1020.5	0.0	0.0	3.7	0		
06	7	09	02	02	97	17.3	52	23.9	5.8	1.5	10.2	10.3	11.2	11.5	10.6	9.8	00	0	0.0	8.2	0	0	0	0	0	0	1010.5	0.0	0.0	3.3	50% snow cover 09GMT		
07	7	04	02	02	97	19.6	61	25.2	11.9	8.5	12.8	12.7	12.9	12.0	11.1	10.1	90	0	tr	6.5	0	0	0	0	0	0	1006.0	0.0	0.0	3.0	0		
08	7	09	02	02	97	21.2	52	27.2	10.6	7.5	12.8	12.8	13.5	12.8	11.6	10.2	90	0	tr	12.4	0	0	0	0	0	0	1006.0	0.0	0.0	5.5	Hail or ice pellets		
09	8	09	05	60	97	21.0	52	24.9	14.1	10.1	15.0	14.6	14.7	13.5	12.2	10.6	90	0	2.7	2.2	0	0	0	0	0	0	1007.5	5.5	0.0	2.6	0		
10	8	04	05	21	94	15.9	94	17.2	15.2	14.4	15.3	15.2	15.2	14.1	12.7	10.9	10	0	34.0	0.0	0	0	0	0	0	0	1005.5	14.6	0.0	0.4	Thunder		
11	8	09	02	50	94	15.6	98	19.0	14.7	14.4	14.9	14.9	14.9	14.0	12.9	11.2	20	0	4.7	0.2	0	0	0	0	0	0	1002.5	4.0	0.0	0.5	0		
12	6	04	04	02	97	17.6	72	24.8	12.1	11.2	13.9	14.1	14.6	14.3	13.1	11.5	10	0	0.0	9.5	0	0	0	0	0	0	1002.0	0.0	0.0	2.9	Gale		
13	7	04	04	05	97	14.4	74	18.4	11.2	11.3	13.3	13.6	14.5	14.5	13.4	11.6	10	0	0.0	8.5	0	0	0	0	0	0	1009.0	0.0	0.0	2.4	0		
14	7	36	36	09	97	10.3	52	16.0	7.0	4.8	11.4	11.7	13.1	14.2	13.5	11.9	10	0	0.0	12.1	0	0	0	0	0	0	1019.0	0.0	0.0	2.2	Fog at 09GMT		
15	5	27	27	02	97	14.4	58	19.1	3.2	2.5	12.1	11.7	12.5	13.6	13.2	12.0	00	0	0.0	9.6	0	0	0	0	0	0	1022.0	0.0	0.0	2.3	0		
16	1	36	36	05	97	14.9	63	19.9	7.5	5.9	11.6	12.2	13.5	14.0	13.2	12.0	00	0	0.0	13.5	0	0	0	0	0	0	1021.5	0.0	0.0	2.3	Air frost		
17	6	27	27	02	97	14.1	73	19.0	6.6	6.0	13.1	12.7	13.6	14.2	13.4	12.1	00	0	tr	4.3	0	0	0	0	0	0	1018.0	0.0	0.0	2.1	0		
18	8	18	18	05	97	12.9	88	15.4	11.2	9.0	13.9	14.0	14.5	14.3	13.5	12.1	90	0	9.2	0.7	0	0	0	0	0	0	1003.5	5.7	0.0	0.8	Ground frost		
19	8	27	27	02	97	14.0	81	19.0	9.6	8.5	12.8	12.7	13.3	13.8	13.2	12.2	10	0	0.7	2.2	0	0	0	0	0	0	1012.5	2.5	0.0	1.6	3		
20	8	22	22	02	97	15.4	72	19.0	13.1	12.5	14.3	14.2	14.4	14.1	13.3	12.2	10	0	0.4	2.5	0	0	0	0	0	0	1015.0	2.1	0.0	2.1	0.2mm precipitation		
21	8	18	18	05	97	14.6	83	16.9	13.0	12.6	14.4	14.4	14.6	14.5	13.5	12.3	10	0	1.1	0.0	0	0	0	0	0	0	1009.0	2.9	0.0	0.9	9		
22	5	27	27	02	97	15.3	77	20.0	10.0	8.5	13.9	13.5	14.0	14.3	13.6	12.4	10	0	tr	4.2	0	0	0	0	0	0	1007.0	0.0	0.0	1.9	1.0mm precipitation		
23	1	36	36	05	97	16.4	63	20.6	8.3	5.7	11.7	12.7	14.0	14.8	13.8	12.4	10	0	0.0	12.8	0	0	0	0	0	0	1017.0	0.0	0.0	2.5	6		
24	0	04	04	02	97	15.8	50	18.3	6.7	4.7	11.2	12.2	14.0	14.8	14.0	12.6	00	0	0.0	11.8	0	0	0	0	0	0	1022.0	0.0	0.0	2.8	5.0mm precipitation		
25	8	36	02	03	97	11.2	74	13.2	7.1	4.5	12.8	12.8	13.7	14.4	13.9	12.6	00	0	tr	0.1	0	0	0	0	0	0	1018.5	0.0	0.0	1.1	3		
26	4	18	02	02	97	16.0	57	20.9	10.1	9.5	12.8	12.8	13.5	13.9	13.5	12.7	00	0	0.0	11.7	0	0	0	0	0	0	1016.5	0.0	0.0	2.2	No sunshine		
27	3	04	05	02	97	17.1	58	22.1	11.0	8.7	14.5	14.0	15.3	15.0	14.2	12.8	10	0	0.0	9.0	0	0	0	0	0	0	1016.5	0.0	0.0	2.6	3		
28	8	04	05	02	96	14.1	75	21.8	10.7	9.0	14.4	15.2	16.2	15.4	14.6	12.9	10	0	0.0	7.0	0	0	0	0	0	0	1015.5	0.0	0.0	2.4	Mean temperature about 1		
29	8	36	05	02	96	13.1	79	21.1	9.3	7.1	11.6	13.5	15.4	15.3	14.6	13.0	00	0	0.0	6.0	0	0	0	0	0	0	1012.5	0.0	0.0	1.9	degC above average, despite a		
30	8	36	05	02	97	13.6	83	18.1	12.1	10.9	13.2	14.6	15.9	15.2	14.2	13.1	00	0	0.0	0.1	0	0	0	0	0	0	1016.0	0.0	0.0	2.2	cool end to the month. May was		
31	8	36	05	03	97	12.4	82	12.9	11.9	9.7	11.3	12.6	14.6	14.7	13.5	13.2	00	0	8.2	0.0	0	0	0	0	0	0	1016.0	5.9	0.0	0.6	a wet month, due mainly to 34		
Monthly means						15.1	68	19.6	9.2	7.2	12.1	12.5	13.4	13.5	12.6	11.5												1014.4				wettest May day since 2007 and	
Monthly totals																				61.5	202.4							43.9	0.0	70.2	the third wettest May day in 35		
Highest values																																years locally. Ground frost was	
Lowest values						21.2		27.2	15.2	14.4	15.3	15.2	16.2	15.4	14.6	13.2				34.0	13.5								14.6	0.0	5.5	were sunless days although the	
1981-2010 monthly climatological averages						10.3	47	12.9	0.0	-2.8	6.0	8.0	8.6	9.7	9.1	9.3																	month was sunnier than
						74	18.0	8.4	6.1	11.5	11.7	12.8	12.9	12.1	11.1				53.0	191.6								1015.8	38.0	0.1	67.1	average.	

Key

DD: date

07GMT observations

N	cloud cover (oktas, 9=obscured)	dd	wind direction (degrees/10)
ff	wind speed (knots)		
ww	present weather code		
1	cloud decreasing	50	intermittent slight drizzle
2	sky not changing	60	intermittent slight rain
3	cloud increasing	63	continuous moderate rain
21	recent rain shower	80	slight rain hower
VV	visibility (00-50 metres/100, 94 very poor, 95 poor, 96 moderate, 97 good)		

Soil temperatures are for 0700GMT beneath bare soil (5, 10, 20cm) or grass (30, 50, 100cm)

09GMT observations

Temp	temperature (degC)	RH	relative humidity (%)
E	state of ground (00 dry, 10 moist, 20 wet, 90 cracked)	SS	snow depth (cm)
Press	air pressure (mb)		

24 hour readings

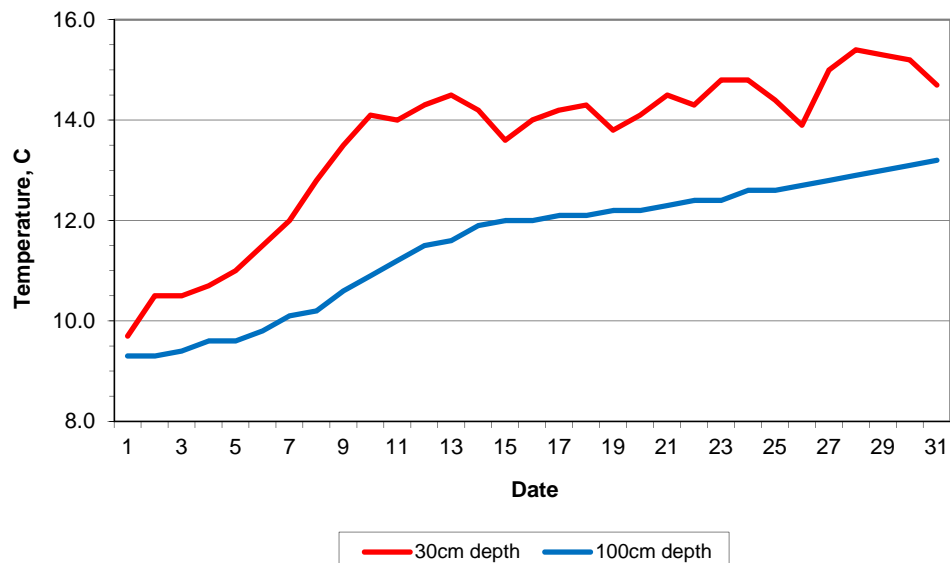
Max	maximum temperature (degC) beginning 09GMT	Min	minimum temperature (degC) ending 09GMT
Gmin	grass minimum temperature (degC) ending 09GMT	Rain	precipitation beginning 09GMT
Sun	sunshine (hours) sunrise-sunset	Rain hrs	hours of rainfall (>0.1mm/h) 09-09GMT
Fr. Hrs	hours of air frost (00-24GMT)	Pch Evap	Piche evaporation (ml) beginning 09GMT

Days with

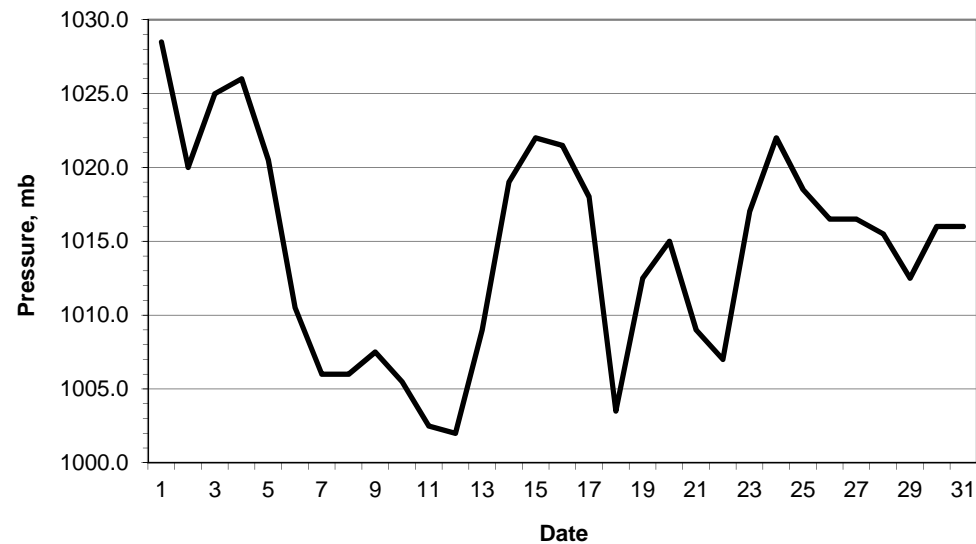
S	snow(5) or sleet(1) falling	L	50% snow cover at 09GMT	H	hail or ice pellets
T	thunder heard	G	gale	F	fog at 09GMT

This information (and data for earlier months) is also available at <http://www.met.rdg.ac.uk/~brugge>

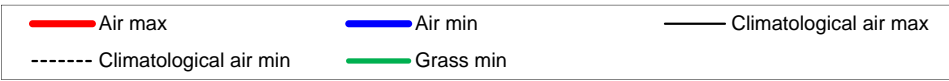
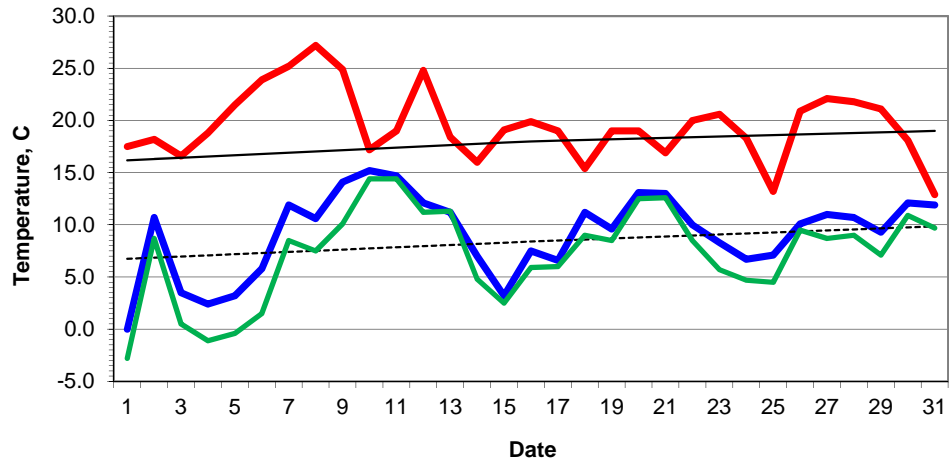
Daily soil temperatures, 0700GMT



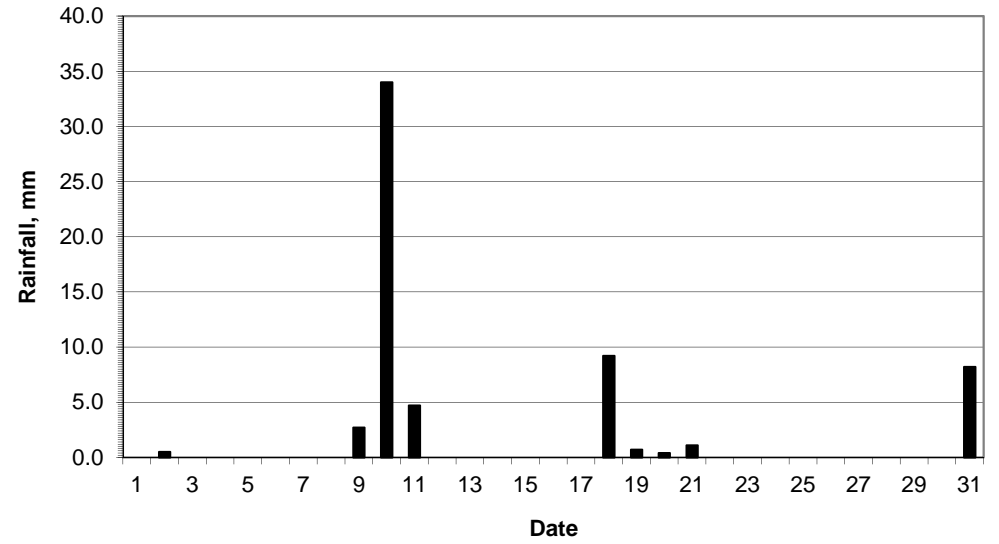
Mean sea level pressure, 0900GMT



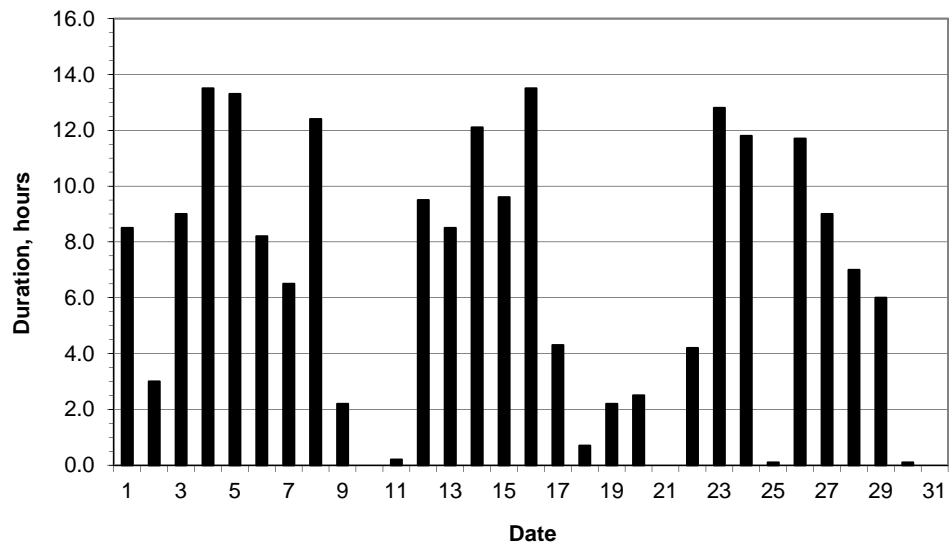
### Daily temperature extremes



### Daily rainfall



### Daily sunshine



### Daily evaporation

