

MAIDENHEAD METEOROLOGICAL OBSERVATIONS FOR MAY 2014

DD	N	dd	ff	ww	VV	0900GMT Temp	RH	Temperature Max	Min	Gmin	Soil temperatures (depth in cm) 5 10 20 30 60 100						E	SS	Rain	Sun	S	L	H	T	G	F	Press	Rain hrs	Fr. hrs	Pch Evap			
01	8	18	02	20	94	11.3	92	14.4	6.7	7.9	11.8	11.8	12.3	12.1	11.2	10.6	10	0	8.8	0.0	0	0	0	0	0	0	1010.0	7.4	0.0	2.0	Number of		
02	8	36	02	02	96	10.0	83	12.7	8.6	8.1	10.9	11.1	11.9	12.0	11.3	10.7	10	0	tr	0.2	0	0	0	0	0	0	1023.0	0.0	0.0	1.3	days with		
03	4	36	05	02	97	10.5	55	15.9	0.7	-1.6	8.9	8.9	9.7	11.2	11.1	10.8	10	0	0.0	13.3	0	0	0	0	0	0	1030.0	0.0	0.0	1.9	2014 normal		
04	7	22	02	02	97	12.8	68	18.1	3.1	1.8	9.7	9.1	10.1	11.1	11.0	10.7	10	0	0.0	9.4	0	0	0	0	0	0	1025.0	0.0	0.0	2.0	Snow/sleet falling		
05	2	09	02	02	97	14.1	67	18.9	3.8	1.4	9.5	9.6	10.8	11.5	11.2	10.7	10	0	0.8	6.1	0	0	0	0	0	0	1014.5	1.7	0.0	2.6	0 0.0		
06	7	22	05	21	96	14.9	73	19.0	11.8	9.4	12.8	12.6	12.6	12.1	11.3	10.7	10	0	0.9	7.1	0	0	0	0	0	0	1006.5	0.8	0.0	2.3	50% snow cover 09GMT		
07	7	27	09	02	97	13.6	71	18.6	9.7	6.7	11.6	12.1	12.9	12.8	11.4	10.8	10	0	1.2	4.3	0	0	0	0	0	0	1009.0	1.2	0.0	2.4	0 0.0		
08	8	22	02	60	96	12.3	86	15.9	10.9	10.0	12.3	12.4	12.9	12.8	11.6	11.0	10	0	3.3	0.7	0	0	0	0	0	0	1008.5	3.3	0.0	1.0	Hail or ice pellets		
09	7	22	09	80	97	14.1	66	18.5	11.0	8.9	12.1	12.1	12.6	12.6	11.9	11.1	10	0	3.9	8.4	0	0	0	0	0	0	1010.0	2.7	0.0	2.5	1 0.6		
10	8	18	09	80	97	15.5	83	17.2	10.2	10.0	13.0	12.7	12.8	12.6	11.8	11.1	10	0	5.5	5.3	0	0	0	0	0	0	1003.0	3.5	0.0	2.0	Thunder		
11	7	27	13	02	97	10.8	74	14.5	8.7	8.0	12.0	11.8	12.3	12.7	11.9	11.2	10	0	0.1	2.9	0	0	0	0	0	0	1003.0	0.1	0.0	2.1	2 2.0		
12	7	27	27	02	97	13.7	66	18.2	8.9	6.2	11.2	11.1	11.9	12.3	11.7	11.3	10	0	3.0	9.4	0	0	4	1	0	0	1010.0	1.5	0.0	1.6	Gale		
13	7	27	27	02	97	12.8	81	19.0	7.7	5.1	11.7	11.6	12.4	12.6	11.9	11.3	10	0	0.1	6.2	0	0	0	0	0	0	1018.0	0.1	0.0	1.0	0 0.0		
14	0	27	27	02	97	15.8	57	20.3	5.2	1.9	9.9	10.6	12.0	12.8	12.0	11.3	10	0	0.0	13.9	0	0	0	0	0	0	1030.5	0.0	0.0	2.5	Fog at 09GMT		
15	1	22	22	02	97	17.6	62	22.5	6.0	3.5	11.2	11.6	12.5	13.1	12.3	11.4	10	0	0.0	11.5	0	0	0	0	0	0	1036.0	0.0	0.0	2.2	0 0.0		
16	1	27	27	02	97	17.9	62	23.4	7.6	5.4	11.6	12.1	13.1	13.5	12.5	11.5	10	0	0.0	10.2	0	0	0	0	0	0	1034.0	0.0	0.0	2.3	Air frost		
17	2	27	27	02	97	20.1	63	25.0	9.8	7.9	14.9	14.2	14.3	14.1	13.1	11.7	00	0	0.0	9.6	0	0	0	0	0	0	1025.5	0.0	0.0	1.9	0 0.1		
18	0	13	13	09	97	20.2	59	24.6	10.3	8.2	16.6	15.4	15.1	14.9	13.6	11.9	00	0	0.0	14.5	0	0	0	0	0	0	1013.0	0.0	0.0	2.5	Ground frost		
19	2	09	09	05	97	21.4	55	26.3	11.4	8.9	14.4	14.7	15.5	15.3	13.9	12.1	00	0	0.0	12.7	0	0	0	0	0	0	1003.0	0.0	0.0	4.4	1 1.3		
20	7	18	18	02	97	17.2	75	19.7	14.0	11.0	16.1	16.2	16.5	15.8	14.3	12.4	00	0	0.3	0.1	0	0	0	0	0	0	1005.5	0.3	0.0	1.4	0.2mm precipitation		
21	8	00	00	00	05	14.9	82	20.1	7.9	5.1	13.1	13.4	14.6	15.1	14.2	12.6	10	0	10.4	3.9	0	0	0	0	0	0	1010.0	2.1	0.0	2.4	17 12.4		
22	7	22	22	02	97	15.7	83	17.4	12.2	9.9	14.7	14.7	15.2	15.1	14.1	12.7	10	0	3.7	2.0	0	0	0	1	0	0	1002.0	3.5	0.0	1.4	1.0mm precipitation		
23	8	13	13	05	97	12.8	81	15.1	10.2	8.5	13.0	13.5	14.4	14.8	14.0	12.8	10	0	10.0	3.5	0	0	0	0	0	0	1004.5	7.4	0.0	1.1	13 9.2		
24	8	13	13	05	96	12.5	97	16.1	10.6	8.1	13.5	13.3	13.6	14.0	13.5	12.8	20	0	1.5	2.1	0	0	0	0	0	0	1008.5	2.5	0.0	1.4	5.0mm precipitation		
25	5	18	09	02	97	15.7	61	18.9	8.9	6.7	13.8	13.1	13.4	14.0	13.4	12.8	10	0	2.2	14.2	0	0	0	0	0	0	1016.5	2.8	0.0	2.6	6 3.2		
26	8	31	02	61	96	11.2	95	14.0	6.7	5.2	12.6	12.8	13.5	14.2	13.5	12.7	10	0	12.3	0.0	0	0	0	0	0	0	1020.0	13.4	0.0	0.3	No sunshine		
27	8	31	09	60	97	14.0	90	14.1	10.0	8.4	12.8	12.8	13.1	13.6	13.2	12.7	10	0	6.2	0.0	0	0	0	0	0	0	1015.5	9.5	0.0	0.6	5 2.6		
28	8	27	05	60	97	12.1	97	16.3	9.3	9.2	11.8	12.0	13.7	13.2	12.9	12.6	20	0	0.1	0.0	0	0	0	0	0	0	1012.0	0.1	0.0	0.4	A wet month with sunshine		
29	7	04	02	01	95	16.3	82	20.0	10.9	10.9	13.9	13.5	13.5	13.4	12.7	12.6	10	0	0.2	1.1	0	0	0	0	0	0	1014.5	0.2	0.0	1.4	amounts a little below average -		
30	8	04	05	02	97	14.0	83	16.4	12.7	12.2	13.9	14.0	14.4	14.0	13.2	12.5	10	0	0.0	0.0	0	0	0	0	0	0	1022.5	0.0	0.0	1.3	the latter were not helped by		
31	8	04	02	02	97	13.3	77	19.8	9.6	7.1	13.5	13.3	13.6	13.8	13.2	12.6	10	0	tr	2.5	0	0	0	0	0	0	1026.0	0.0	0.0	1.6	just 3.6 h of sunshine in the last		
Monthly means						14.5	75	18.4	8.9	7.1	12.5	12.5	13.1	13.3	12.5	11.7											1015.2				Temperatures peaked mid-		
Monthly totals																				74.5	175.1							64.1	0.0	56.4	month and were slightly above		
Highest values																																average overall. The second	
Lowest values						21.4		26.3	14.0	12.2	16.6	16.2	16.5	15.8	14.3	12.8													13.4	0.0	4.4	half of the month was quite wet	
1981-2010 monthly climatological averages						10.0	55	12.7	0.7	-1.6	8.9	8.9	9.7	11.1	11.0	10.6																	at times.
						74	18.0	8.4	6.1	11.5	11.7	12.8	12.9	12.1	11.1													1015.8	38.0	0.1	67.1		

Key

DD: date

07GMT observations

N	cloud cover (oktas, 9=obscured)	dd	wind direction (degrees/10)
ff	wind speed (knots)		
ww	present weather code		
1	cloud decreasing	50	intermittent slight drizzle
2	sky not changing	60	intermittent slight rain
3	cloud increasing	63	continuous moderate rain
21	recent rain shower	80	slight rain hower
VV	visibility (00-50 metres/100, 94 very poor, 95 poor, 96 moderate, 97 good)		

Soil temperatures are for 0700GMT beneath bare soil (5, 10, 20cm) or grass (30, 50, 100cm)

09GMT observations

Temp	temperature (degC)	RH	relative humidity (%)
E	state of ground (00 dry, 10 moist, 20 wet, 90 cracked)	SS	snow depth (cm)
Press	air pressure (mb)		

24 hour readings

Max	maximum temperature (degC) beginning 09GMT	Min	minimum temperature (degC) ending 09GMT
Gmin	grass minimum temperature (degC) ending 09GMT	Rain	precipitation beginning 09GMT
Sun	sunshine (hours) sunrise-sunset	Rain hrs	hours of rainfall (>0.1mm/h) 09-09GMT
Fr. Hrs	hours of air frost (00-24GMT)	Pch Evap	Piche evaporation (ml) beginning 09GMT

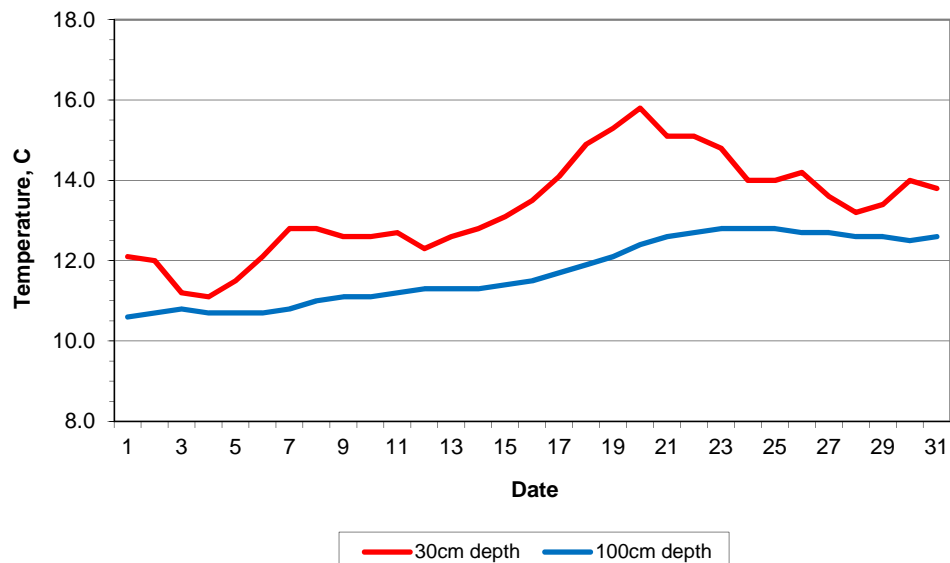
Days with

S	snow(5) or sleet(1) falling	L	50% snow cover at 09GMT	H	hail or ice pellets
T	thunder heard	G	gale	F	fog at 09GMT

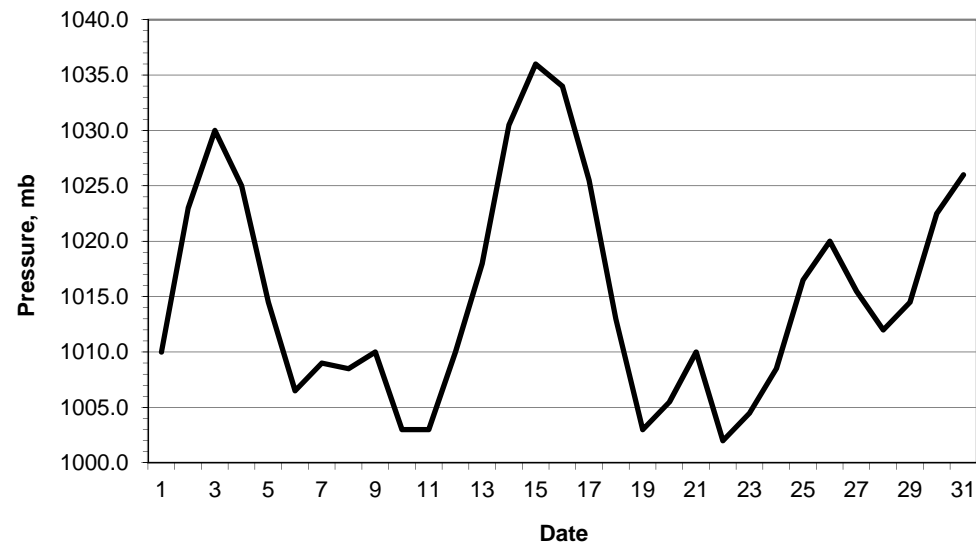
This information (and data for earlier months) is also available at

<http://www.met.rdg.ac.uk/~brugge>

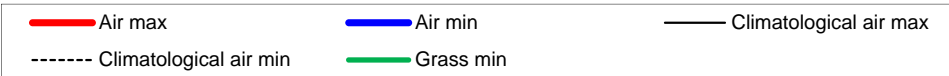
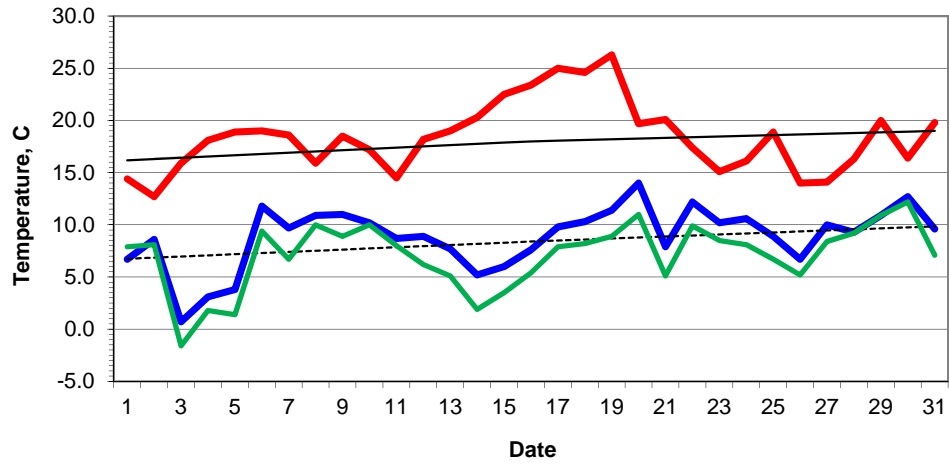
Daily soil temperatures, 0700GMT



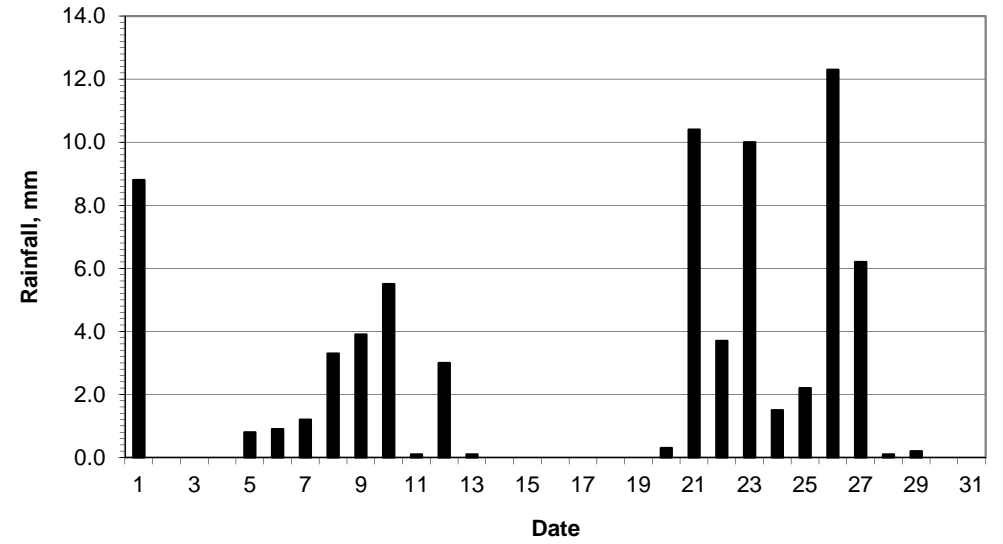
Mean sea level pressure, 0900GMT



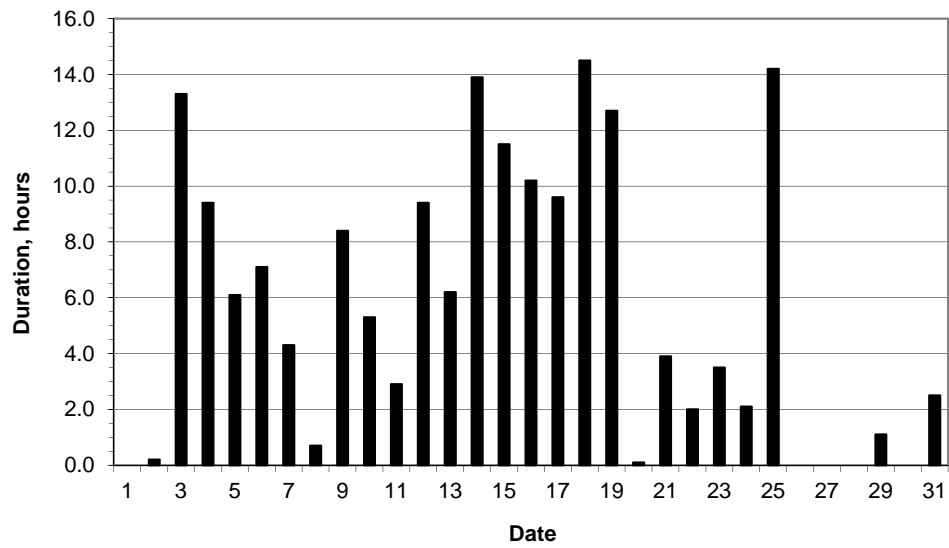
Daily temperature extremes



Daily rainfall



Daily sunshine



Daily evaporation

