

MAIDENHEAD METEOROLOGICAL OBSERVATIONS FOR MAY 2013

DD	N	dd	ff	ww	VV	0900GMT		Temperature				Soil temperatures (depth in cm)						E	SS	Rain	Sun	S	L	H	T	G	F	Press	Rain	Fr.	Pch	
						Temp	RH	Max	Min	Gmin	5	10	20	30	60	100	hrs												hrs	Evap		
01	8	04	05	02	97	7.9	81	17.2	3.2	-0.2	8.3	8.7	9.7	10.1	9.4	8.8	00	0	0.0	10.1	0	0	0	0	0	0	0	1026.0	0.0	0.0	3.8	Number of days with 2013 normal Snow/sleet falling 0 0.0 50% snow cover 09GMT 0 Hail or ice pellets 1 Thunder 1 Gale 0 Fog at 09GMT 0 Air frost 0 Ground frost 3 0.2mm precipitation 16 1.0mm precipitation 12 5.0mm precipitation 5 No sunshine 1 The relative humidity fell to very low value of 14% during the late afternoon of the 2nd, having reached 18% on the 1st. Other days during the first week also had low values, but not quite as low as on these days. It was the coldest May in Maidenhead since 1996, and the March-May period (spring) was the coldest since 1962. Despite a sunny start to the month, May ended up with less sunshine than normal.
02	1	04	05	03	97	13.2	36	19.3	2.8	-0.2	8.2	8.3	10.0	10.4	9.5	8.9	00	0	0.0	13.4	0	0	0	0	0	0	1024.0	0.0	0.0	3.7		
03	1	00	00	02	97	16.0	48	21.5	6.8	0.0	8.5	9.2	10.6	10.8	9.8	9.0	00	0	tr	12.4	0	0	0	0	0	0	1021.0	0.0	0.0	3.3		
04	8	22	02	60	97	12.7	81	18.5	6.1	3.6	10.0	10.6	11.2	11.3	10.3	9.1	00	0	0.0	7.4	0	0	0	0	0	0	1016.5	0.0	0.0	3.3		
05	6	27	02	03	97	15.8	71	22.9	6.3	3.2	13.1	11.8	11.7	11.4	10.5	9.2	00	0	0.0	5.3	0	0	0	0	0	0	1022.5	0.0	0.0	4.5		
06	0	31	02	02	97	17.9	66	20.9	7.9	6.0	17.7	17.4	16.0	12.9	10.6	9.5	90	0	0.0	12.5	0	0	0	0	0	0	1020.0	0.0	0.0	0.5		
07	1	09	02	02	97	17.8	63	24.1	6.6	3.4	11.5	11.7	12.8	12.5	11.0	9.6	90	0	1.5	13.7	0	0	0	0	0	0	1016.5	1.6	0.0	4.5		
08	8	09	02	21	97	14.2	89	17.8	11.9	8.9	13.7	13.8	14.2	13.1	11.5	9.8	10	0	0.2	2.0	0	0	0	0	0	0	1005.0	0.2	0.0	1.4		
09	6	09	05	03	97	13.3	50	15.5	4.4	2.6	10.1	10.7	11.9	12.5	11.4	10.1	00	0	1.9	6.4	0	0	0	0	0	0	1008.0	3.7	0.0	2.3		
10	8	09	05	02	97	11.3	85	17.8	9.6	7.9	11.6	11.7	12.1	12.2	11.3	10.2	10	0	2.2	3.3	0	0	0	0	0	0	1010.0	2.9	0.0	1.8		
11	3	13	02	03	97	11.2	66	14.2	6.0	3.4	10.4	10.8	11.8	12.2	11.2	10.2	10	0	3.7	1.8	0	0	0	1	0	0	1010.0	0.5	0.0	1.8		
12	7	09	09	09	97	13.9	65	16.2	4.5	1.5	10.1	9.6	10.5	11.4	11.1	10.2	10	0	1.1	7.1	0	0	0	0	0	0	1016.0	2.3	0.0	1.1		
13	7	09	09	05	97	13.3	67	16.4	10.5	9.1	11.4	11.7	12.1	11.4	10.8	10.3	10	0	0.1	8.3	0	0	0	0	0	0	1013.0	0.1	0.0	2.6		
14	4	13	13	02	97	10.9	64	11.7	6.7	4.6	10.2	10.5	11.3	11.9	11.1	10.3	10	0	8.9	1.0	0	0	0	0	0	0	1005.5	9.8	0.0	1.0		
15	8	22	22	13	97	6.8	85	14.2	5.9	5.1	8.8	9.3	10.4	11.2	10.9	10.3	10	0	0.3	2.1	0	0	0	0	0	0	993.0	0.2	0.0	1.5		
16	1	31	31	00	97	13.1	69	17.5	1.6	-0.8	7.3	7.9	9.6	10.7	10.6	10.3	10	0	0.9	8.1	0	0	0	0	0	0	1000.5	1.0	0.0	2.1		
17	7	04	04	02	95	11.0	75	12.7	3.4	0.9	8.7	8.9	10.3	11.0	10.4	10.1	10	0	0.1	0.2	0	0	0	0	0	0	1006.5	0.1	0.0	1.4		
18	7	27	27	05	97	13.1	56	16.9	8.5	7.3	10.6	11.1	10.8	10.9	10.3	10.2	10	0	0.0	1.0	0	0	0	0	0	0	1008.5	0.0	0.0	2.1		
19	7	36	36	02	97	15.8	63	18.9	7.1	4.0	12.2	11.4	11.2	11.1	10.5	10.1	00	0	0.4	3.0	0	0	0	0	0	0	1011.5	0.8	0.0	2.3		
20	8	31	31	05	96	13.1	91	17.8	10.7	7.2	11.8	11.8	12.1	11.8	10.8	10.2	10	0	tr	0.1	0	0	0	0	0	0	1010.5	0.0	0.0	1.3		
21	8	36	36	09	96	13.1	87	15.5	13.0	11.0	13.4	13.2	13.0	12.1	11.0	10.3	10	0	0.1	0.2	0	0	0	0	0	0	1015.0	0.4	0.0	1.1		
22	8	36	36	02	97	11.9	78	15.3	10.0	10.0	12.2	12.2	12.4	12.1	11.0	10.4	10	0	0.0	3.1	0	0	0	0	0	0	1019.0	0.0	0.0	2.1		
23	7	31	31	05	97	10.0	62	11.6	5.7	2.9	9.4	9.6	10.8	11.6	11.0	10.5	00	0	1.7	6.3	0	0	4	0	0	0	1014.0	4.1	0.0	1.1		
24	7	27	27	13	97	8.0	82	10.9	5.5	3.8	9.4	9.4	10.2	11.0	10.7	10.6	10	0	5.3	0.1	0	0	0	0	0	0	1008.5	7.5	0.0	1.6		
25	6	36	13	03	97	10.9	70	16.1	5.4	2.5	8.8	8.4	9.4	10.4	10.5	10.5	10	0	0.0	10.3	0	0	0	0	0	0	1022.0	0.0	0.0	1.5		
26	5	31	09	03	97	16.7	47	20.9	3.7	2.4	10.0	9.4	10.2	11.0	10.7	10.4	10	0	0.0	14.3	0	0	0	0	0	0	1020.5	0.0	0.0	1.9		
27	2	22	09	03	97	14.9	60	18.5	4.4	2.7	13.8	12.1	11.8	12.0	11.1	10.4	00	0	9.1	13.0	0	0	0	0	0	0	1009.5	5.4	0.0	3.0		
28	8	04	05	63	94	10.4	97	11.9	10.0	8.1	12.1	12.4	13.1	12.8	11.4	10.5	10	0	13.2	0.0	0	0	0	0	0	0	1000.0	7.5	0.0	0.3		
29	7	27	02	02	96	12.5	79	13.0	7.1	5.0	11.0	11.0	11.6	11.9	11.2	10.7	10	0	5.5	0.1	0	0	0	0	0	0	1004.5	7.0	0.0	0.5		
30	8	31	05	21	96	12.2	89	16.0	9.2	11.1	11.8	11.8	12.1	11.9	11.0	10.7	10	0	2.0	0.1	0	0	0	0	0	0	1010.0	0.6	0.0	0.9		
31	7	36	02	01	97	14.3	78	22.2	10.9	9.5	12.7	12.3	12.5	12.2	11.2	10.7	10	0	0.0	8.7	0	0	0	0	0	0	1018.5	0.0	0.0	2.5		
Monthly means						12.8	71	16.9	6.9	4.7	10.9	10.9	11.5	11.6	10.8	10.1												1012.5				
Monthly totals																					58.2	175.4						55.7	0.0	62.8		
Highest values						17.9		24.1	13.0	11.1	17.7	17.4	16.0	13.1	11.5	10.7				13.2	14.3							9.8	0.0	4.5		
Lowest values						6.8	36	10.9	1.6	-0.8	7.3	7.9	9.4	10.1	9.4	8.8																
1981-2010 monthly climatological averages						74	18.0	8.4	6.1	11.5	11.7	12.8	12.9	12.1	11.1							53.0	191.6						1015.8	38.0	0.1	67.1

Key

DD: date

07GMT observations

N	cloud cover (oktas, 9=obscured)	dd	wind direction (degrees/10)
ff	wind speed (knots)		
ww	present weather code		
1	cloud decreasing	50	intermittent slight drizzle
2	sky not changing	60	intermittent slight rain
3	cloud increasing	63	continuous moderate rain
21	recent rain shower	80	slight rain hower
VV	visibility (00-50 metres/100, 94 very poor, 95 poor, 96 moderate, 97 good)		

Soil temperatures are for 0700GMT beneath bare soil (5, 10, 20cm) or grass (30, 50, 100cm)

09GMT observations

Temp	temperature (degC)	RH	relative humidity (%)
E	state of ground (00 dry, 10 moist, 20 wet, 90 cracked)	SS	snow depth (cm)
Press	air pressure (mb)		

24 hour readings

Max	maximum temperature (degC) beginning 09GMT	Min	minimum temperature (degC) ending 09GMT
Gmin	grass minimum temperature (degC) ending 09GMT	Rain	precipitation beginning 09GMT
Sun	sunshine (hours) sunrise-sunset	Rain hrs	hours of rainfall (>0.1mm/h) 09-09GMT
Fr. Hrs	hours of air frost (00-24GMT)	Pch Evap	Piche evaporation (ml) beginning 09GMT

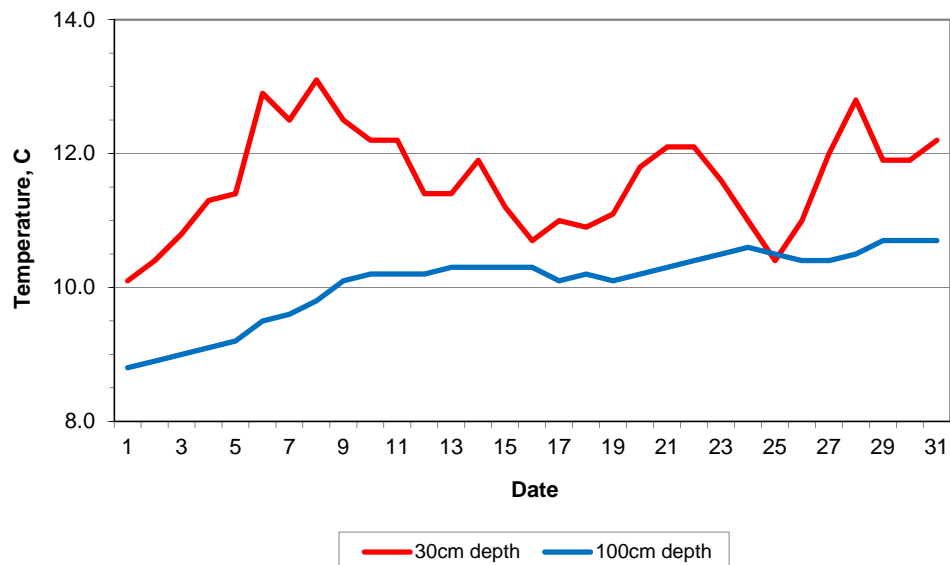
Days with

S	snow(5) or sleet(1) falling	L	50% snow cover at 09GMT	H	hail or ice pellets
T	thunder heard	G	gale	F	fog at 09GMT

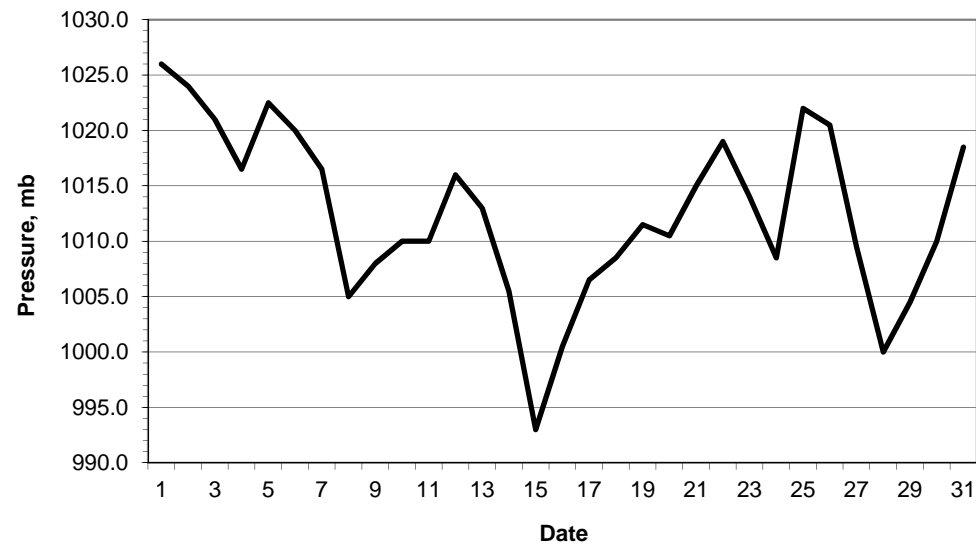
This information (and data for earlier months) is also available at

<http://www.met.rdg.ac.uk/~brugge>

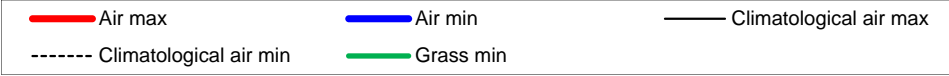
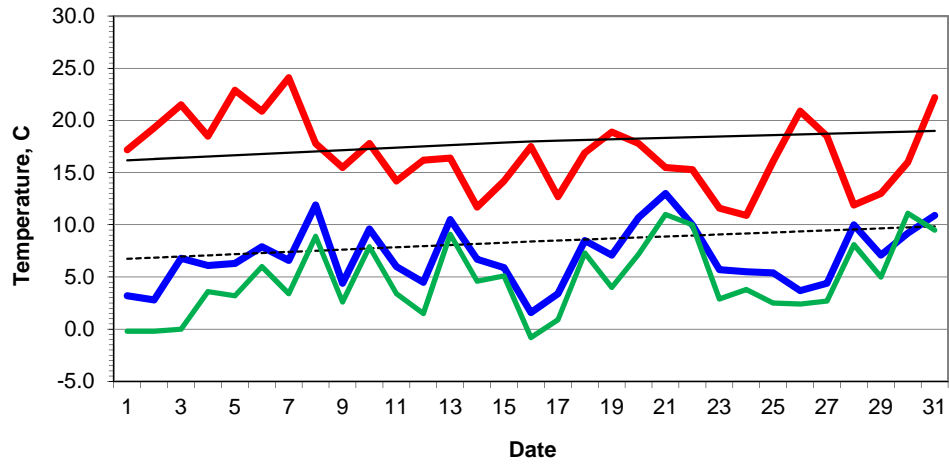
Daily soil temperatures, 0700GMT



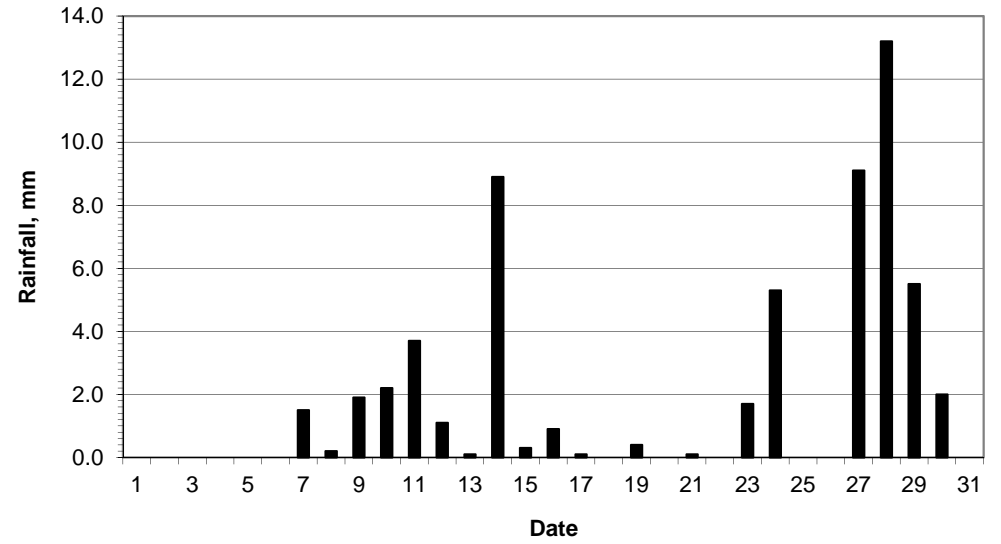
Mean sea level pressure, 0900GMT



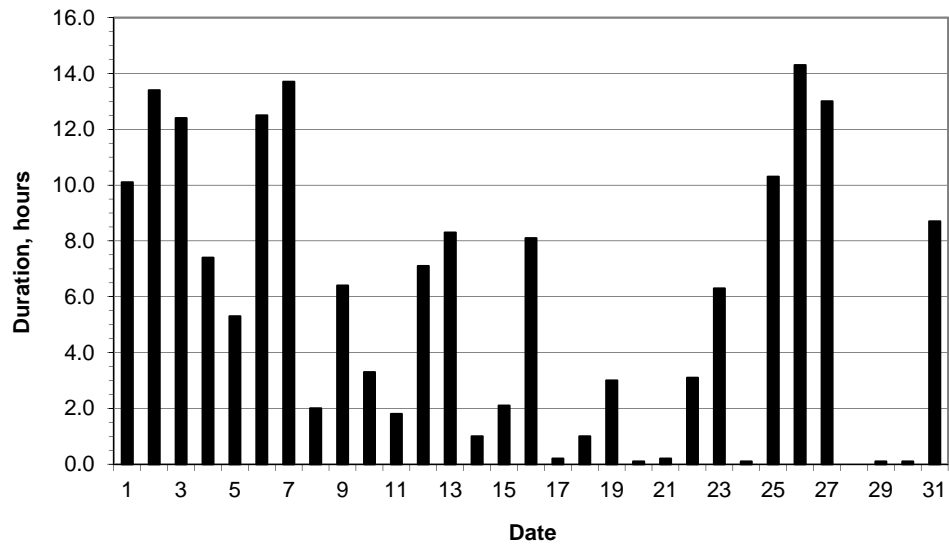
### Daily temperature extremes



### Daily rainfall



### Daily sunshine



### Daily evaporation

