

MAIDENHEAD METEOROLOGICAL OBSERVATIONS FOR MAY 2011

DD	N	dd	ff	ww	VV	0900GMT		Temperature				Soil temperatures (depth in cm)						E	SS	Rain	Sun	S	L	H	T	G	F	Press	Rain hrs	Fr. hrs	Pch Evap		
						Temp	RH	Max	Min	Gmin	5	10	20	30	60	100																	
01	3	06	13	02	97	16.4	56	21.1	10.9	7.4	14.0	13.8	14.3	14.1	13.1	11.9	90	0	0.0	8.9	0	0	0	0	0	0	0	1010.5	0.0	0.0	4.2	Number of	
02	2	06	13	02	97	15.1	43	18.3	8.5	5.1	13.9	13.4	14.0	14.1	13.3	12.0	90	0	0.0	14.1	0	0	0	0	0	0	1012.5	0.0	0.0	3.5	days with		
03	6	06	09	02	97	12.0	57	16.3	5.7	2.4	11.1	11.8	13.2	13.8	13.3	12.1	90	0	0.0	13.3	0	0	0	0	0	0	1018.0	0.0	0.0	3.5	2011 normal		
04	4	07	09	02	97	13.3	58	19.0	3.1	-0.1	10.0	10.6	12.4	13.3	13.0	12.1	90	0	0.0	11.8	0	0	0	0	0	0	1022.5	0.0	0.0	4.0	Snow/sleet falling		
05	7	09	05	01	97	13.0	69	20.7	9.0	7.5	12.8	12.6	13.6	13.6	13.0	12.1	90	0	0.0	4.2	0	0	0	0	0	0	1021.0	0.0	0.0	2.3	0 0.1		
06	7	11	02	02	97	18.7	65	25.1	8.6	5.9	12.9	13.0	13.9	13.8	13.1	12.1	90	0	6.6	9.7	0	0	0	0	0	0	1016.5	4.0	0.0	2.1	50% snow cover 09GMT		
07	8	11	05	62	96	15.9	96	22.2	13.6	12.0	15.4	15.3	15.2	14.6	13.3	12.1	10	0	13.5	1.0	0	0	0	1	0	0	1012.5	10.0	0.0	3.6	0 0.0		
08	6	17	09	02	97	16.9	77	19.6	14.7	13.9	16.1	15.6	15.6	14.9	13.6	12.3	10	0	tr	4.8	0	0	0	0	0	0	1013.0	0.0	0.0	2.1	Hail or ice pellets		
09	0	19	02	02	97	17.5	62	20.5	8.0	6.4	12.2	12.8	14.3	14.6	13.6	12.4	10	0	0.0	12.4	0	0	0	0	0	0	1021.5	0.0	0.0	2.7	0 0.5		
10	2	16	02	01	97	17.3	63	21.5	7.3	5.9	12.8	12.8	14.1	14.5	13.7	12.5	10	0	0.0	12.0	0	0	0	0	0	0	1025.5	0.0	0.0	2.5	Thunder		
11	3	23	02	02	96	14.3	84	17.5	9.0	7.0	13.3	12.8	14.4	14.6	13.7	12.6	10	0	0.0	1.9	0	0	0	0	0	0	1025.0	0.0	0.0	1.9	1 1.9		
12	7	27	27	02	97	16.4	54	19.0	7.0	5.2	11.7	12.1	13.5	14.1	13.6	12.6	00	0	0.0	8.3	0	0	0	0	0	0	1020.5	0.0	0.0	2.3	Gale		
13	6	00	00	00	97	16.3	59	18.0	5.1	4.0	11.2	11.6	13.5	14.0	13.4	12.7	00	0	0.0	6.0	0	0	0	0	0	0	1022.0	0.0	0.0	1.8	0 0.0		
14	0	31	31	09	97	16.1	59	18.0	6.0	4.1	11.3	11.8	13.6	14.0	13.4	12.7	00	0	0.1	6.9	0	0	0	0	0	0	1020.0	0.1	0.0	2.5	Fog at 09GMT		
15	3	27	27	09	97	13.7	62	16.7	7.2	5.4	11.7	12.3	13.5	13.9	13.6	12.7	00	0	0.1	3.2	0	0	0	0	0	0	1026.5	0.1	0.0	1.7	0 0.0		
16	7	25	25	09	97	16.6	70	19.2	10.8	8.7	13.9	14.0	14.2	14.0	13.5	12.7	00	0	0.0	2.3	0	0	0	0	0	0	1024.5	0.0	0.0	2.3	Air frost		
17	7	25	25	02	97	16.5	68	18.8	10.8	9.1	13.3	13.7	14.4	14.1	13.6	12.7	00	0	0.3	0.2	0	0	0	0	0	0	1021.5	0.9	0.0	1.6	0 0.1		
18	7	23	23	05	97	15.5	77	19.1	12.9	12.6	14.6	14.7	15.0	14.5	13.7	12.7	10	0	1.3	0.4	0	0	0	0	0	0	1016.0	1.2	0.0	1.2	Ground frost		
19	0	27	27	02	97	16.5	60	19.6	5.0	4.9	11.2	11.7	13.5	14.0	13.6	12.8	10	0	0.1	11.3	0	0	0	0	0	0	1019.5	0.1	0.0	2.1	1 2.2		
20	4	27	27	02	97	16.4	51	18.0	8.5	7.8	12.4	12.7	14.0	14.1	13.6	12.9	00	0	0.0	7.5	0	0	0	0	0	0	1020.0	0.0	0.0	2.7	0.2mm precipitation		
21	0	00	00	00	97	17.4	55	21.3	5.9	5.8	12.8	12.7	13.9	14.1	13.7	12.9	90	0	0.7	14.5	0	0	0	0	0	0	1021.5	0.7	0.0	3.3	8 12.2		
22	2	24	24	13	97	16.0	60	19.1	10.6	8.5	13.9	14.0	15.0	14.8	14.0	12.9	90	0	tr	12.2	0	0	0	0	0	0	1015.0	0.0	0.0	3.1	1.0mm precipitation		
23	7	22	22	13	97	15.2	60	18.2	8.1	5.1	12.7	13.7	14.4	14.7	14.1	13.0	90	0	0.1	4.9	0	0	0	0	0	0	1020.0	0.1	0.0	2.4	5 8.8		
24	6	26	26	05	97	15.6	44	19.6	6.3	4.1	12.1	12.6	14.0	14.5	14.0	13.0	90	0	0.0	12.1	0	0	0	0	0	0	1026.5	0.0	0.0	3.0	5.0mm precipitation		
25	8	22	02	02	97	17.7	44	21.3	4.7	2.4	11.7	12.3	14.1	14.6	14.1	13.1	90	0	0.0	12.6	0	0	0	0	0	0	1025.5	0.0	0.0	4.0	3 2.9		
26	7	23	09	25	97	13.3	79	16.1	10.4	8.5	14.6	14.9	15.5	15.3	14.3	13.1	90	0	9.8	1.0	0	0	0	0	0	0	1017.0	3.5	0.0	1.6	No sunshine		
27	8	29	05	02	97	13.6	75	15.9	9.8	7.5	12.8	12.9	14.0	13.9	14.3	13.1	10	0	tr	2.6	0	0	0	0	0	0	1019.0	0.0	0.0	1.4	0 2.8		
28	8	23	05	02	97	12.6	77	17.6	8.8	7.0	12.2	12.4	13.6	14.0	13.8	13.1	10	0	0.5	2.7	0	0	0	0	0	0	1016.5	0.5	0.0	1.9	May was 0.9C cooler than April		
29	8	22	13	02	97	17.6	67	19.1	12.6	11.2	14.3	13.8	14.0	13.9	13.5	13.1	10	0	0.0	2.1	0	0	0	0	0	0	1012.5	0.0	0.0	1.1	2011 by day but 1.,0C warmer		
30	8	18	09	02	97	15.1	88	19.5	13.2	13.0	14.6	14.7	14.9	14.6	13.8	13.1	00	0	3.3	0.8	0	0	0	0	0	0	1011.0	4.3	0.0	0.8	by night, and overall was slightly		
31	2	30	09	03	97	14.3	63	19.0	5.9	4.8	11.2	11.8	13.6	14.1	13.9	13.1	10	0	0.0	12.0	0	0	0	0	0	0	1019.5	0.0	0.0	2.3	warmer than average. May was		
Monthly means						15.6	65	19.2	8.6	6.9	12.9	13.1	14.1	14.2	13.6	12.7												1019.1				another dry month and there	
Monthly totals																				36.4	217.7							25.5	0.0	75.5	was also more sunshine than		
Highest values						18.7		25.1	14.7	13.9	16.1	15.6	15.3	14.3	13.1				13.5	14.5							10.0	0.0	4.2	than in April 2011. Neither air or			
Lowest values																																soil temperatures varied very	
1971-2000 monthly climatological averages						12.0	43	15.9	3.1	-0.1	10.0	10.6	12.4	13.3	13.0	11.9																	much during the month.
						73	17.4	8.0	5.6	11.0	11.2	12.4	12.4	11.5	10.5				50.9	187.6								1015.9	37.2	0.1	69.1		

Key

DD: date

07GMT observations

N	cloud cover (oktas, 9=obscured)	dd	wind direction (degrees/10)
ff	wind speed (knots)		
ww	present weather code		
1	cloud decreasing	50	intermittent slight drizzle
2	sky not changing	60	intermittent slight rain
3	cloud increasing	63	continuous moderate rain
21	recent rain shower	80	slight rain hower
VV	visibility (00-50 metres/100, 94 very poor, 95 poor, 96 moderate, 97 good)		

Soil temperatures are for 0700GMT beneath bare soil (5, 10, 20cm) or grass (30, 50, 100cm)

09GMT observations

Temp	temperature (degC)	RH	relative humidity (%)
E	state of ground (00 dry, 10 moist, 20 wet, 90 cracked)	SS	snow depth (cm)
Press	air pressure (mb)		

24 hour readings

Max	maximum temperature (degC) beginning 09GMT	Min	minimum temperature (degC) ending 09GMT
Gmin	grass minimum temperature (degC) ending 09GMT	Rain	precipitation beginning 09GMT
Sun	sunshine (hours) sunrise-sunset	Rain hrs	hours of rainfall (>0.1mm/h) 09-09GMT
Fr. Hrs	hours of air frost (00-24GMT)	Pch Evap	Piche evaporation (ml) beginning 09GMT

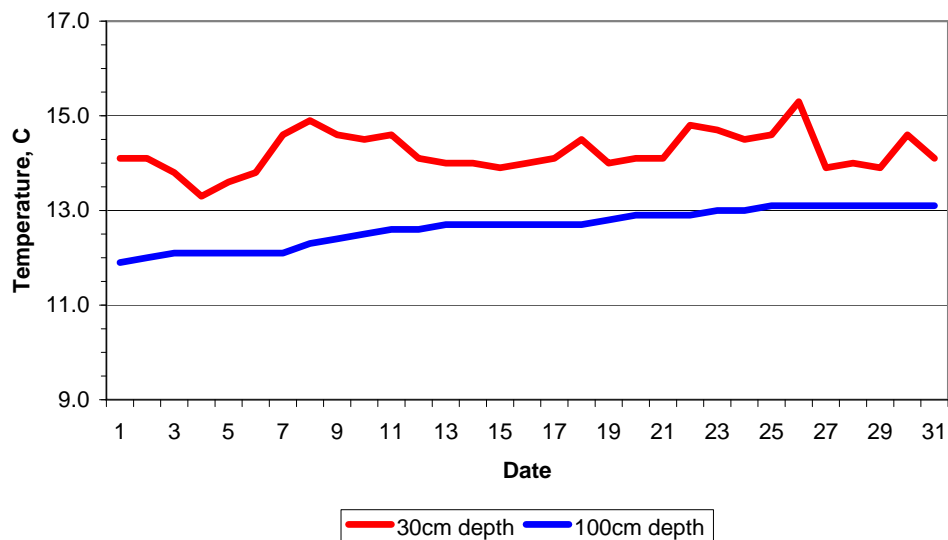
Days with

S	snow(5) or sleet(1) falling	L	50% snow cover at 09GMT	H	hail or ice pellets
T	thunder heard	G	gale	F	fog at 09GMT

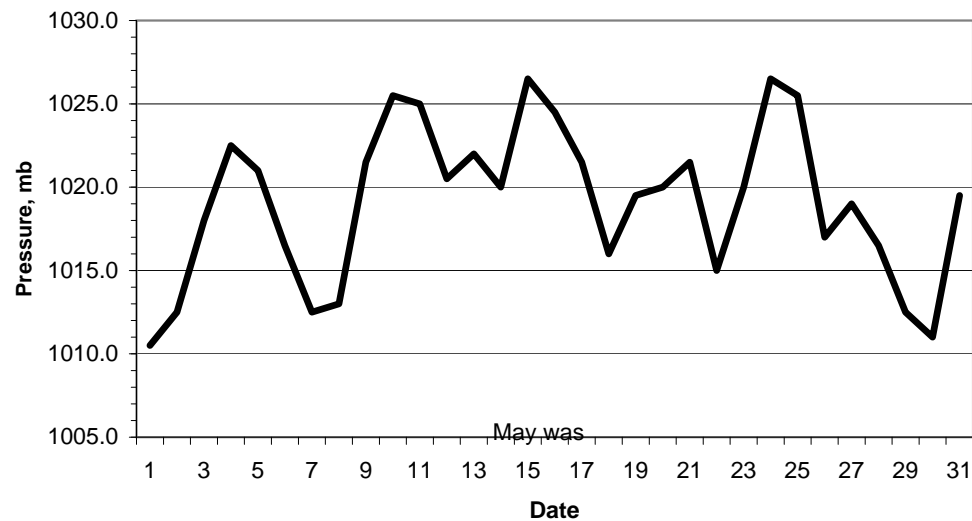
This information (and data for earlier months) is also available at

<http://www.met.rdg.ac.uk/~brugge>

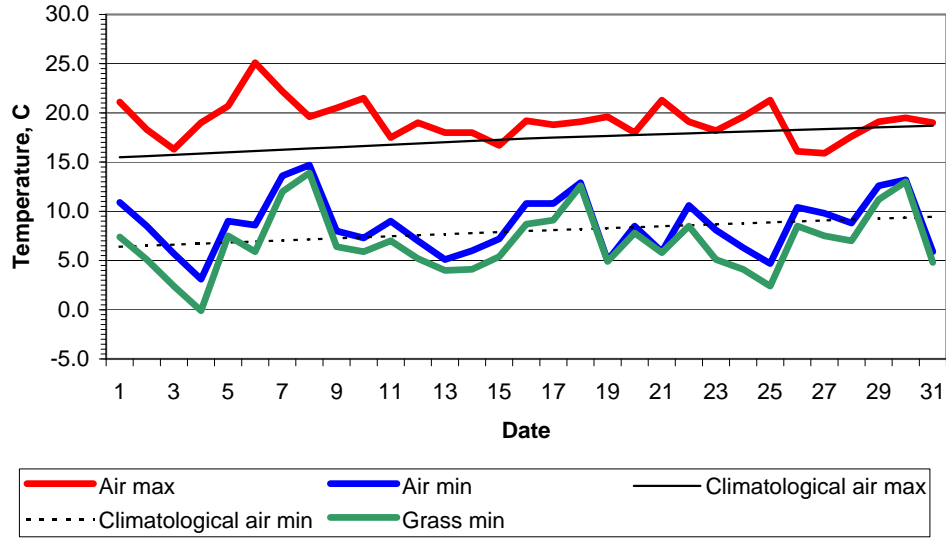
Daily soil temperatures, 0700GMT



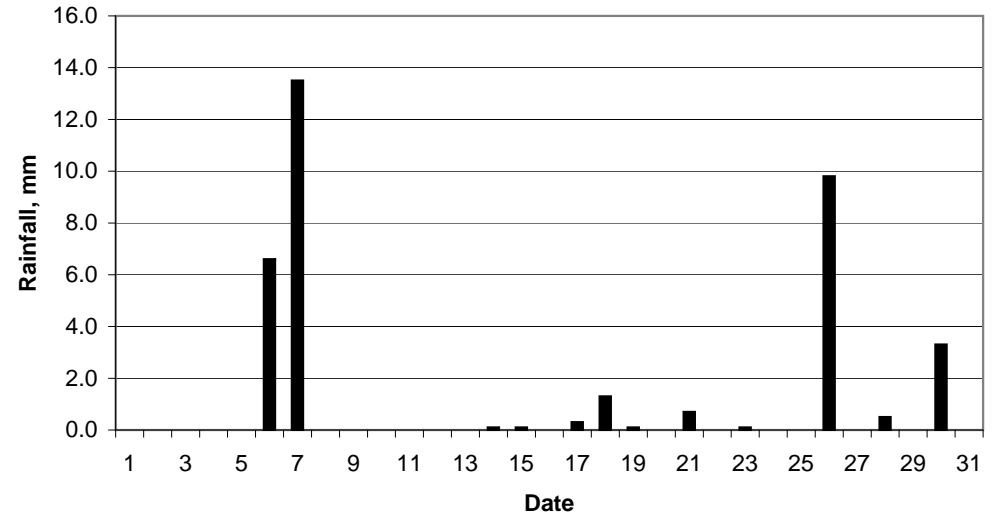
Mean sea level pressure, 0900GMT



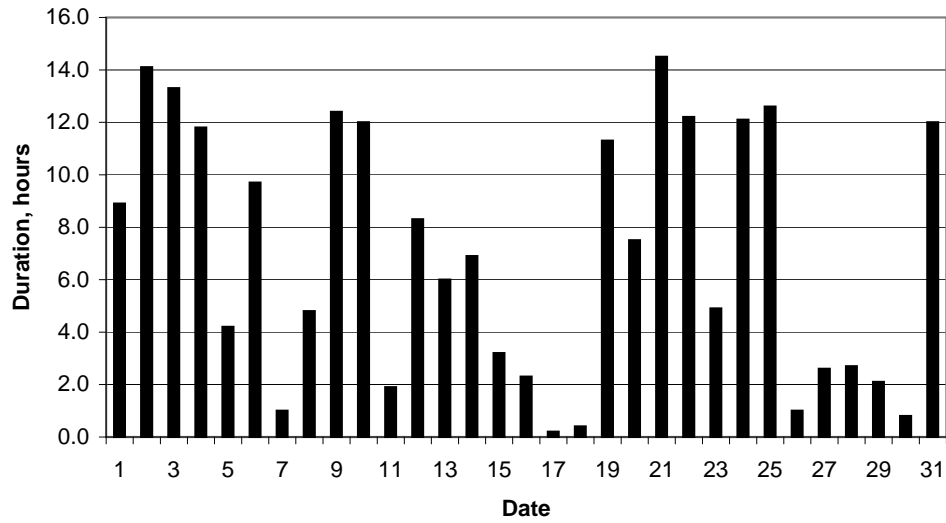
### Daily temperature extremes



### Daily rainfall



### Daily sunshine



### Daily evaporation

