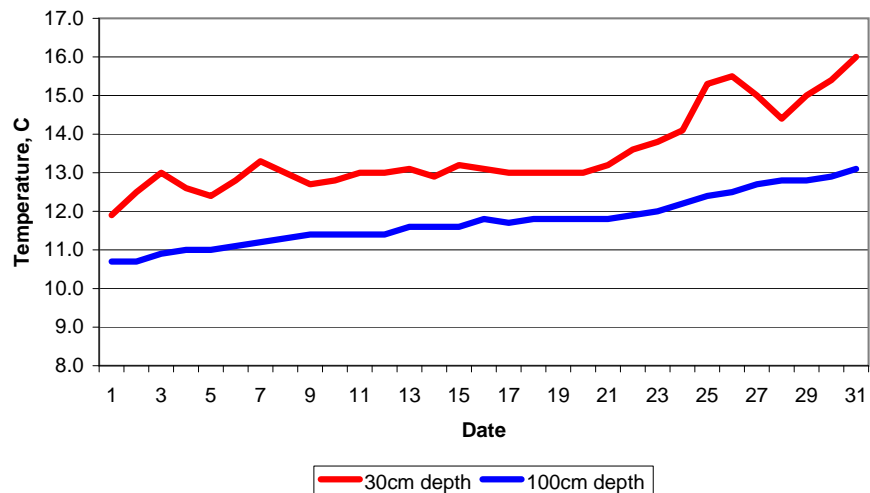


MAIDENHEAD METEOROLOGICAL OBSERVATIONS FOR MAY 2009

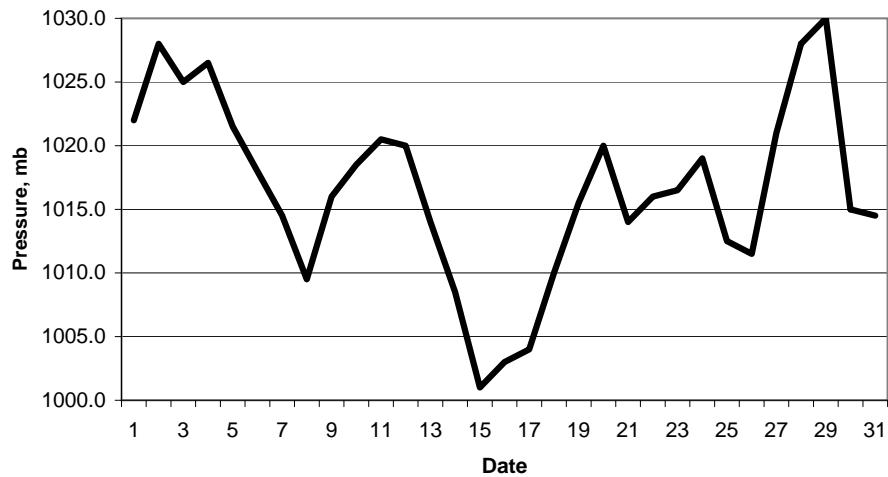
DD	N	dd	ff	ww	VV	0900GMT		Temperature		Soil temperatures (depth in cm)						E	SS	Rain	Sun	S	L	H	T	G	F	Press	Rain	Fr.	Pch			
						Temp	RH	Max	Min	Gmin	5	10	20	30	50												100	hrs	hrs		Evap	
01	0	04	02	02	97	17.1	69	20.1	9.4	7.1	11.2	11.6	12.1	11.9	11.2	10.7	10	0	0.0	9.4	0	0	0	0	0	0	1022.0	0.0	0.0	2.6	Number of	
02	1	22	02	02	97	15.1	67	19.9	6.7	4.4	11.2	11.6	12.6	12.5	11.6	10.7	10	0	0.0	9.8	0	0	0	0	0	0	1028.0	0.0	0.0	2.2	days with	
03	8	32	09	02	97	14.9	50	16.9	9.7	8.2	12.8	12.7	13.0	13.0	12.0	10.9	00	0	0.0	9.2	0	0	0	0	0	0	1025.0	0.0	0.0	2.5	2009	
04	7	23	02	02	97	11.6	63	16.9	3.0	1.8	11.2	11.0	12.1	12.6	12.2	11.0	00	0	0.2	0.2	0	0	0	0	0	0	1026.5	0.2	0.0	1.5	snow/sleet falling	
05	7	27	02	02	97	14.0	64	20.5	9.8	8.2	12.2	12.1	12.4	12.4	11.8	11.0	00	0	0.0	5.1	0	0	0	0	0	0	1021.5	0.0	0.0	2.4	0	
06	7	23	05	02	97	14.0	67	20.4	11.7	9.1	12.8	12.8	13.1	12.8	11.8	11.1	00	0	tr	6.2	0	0	0	0	0	0	1018.0	0.0	0.0	2.4	50% snow cover 09GMT	
07	8	22	05	02	97	12.9	79	15.3	9.3	7.1	12.8	12.8	13.6	13.3	12.2	11.2	00	0	tr	0.2	0	0	0	0	0	0	1014.5	0.0	0.0	1.6	0	
08	7	24	02	60	97	10.7	78	15.9	9.7	7.3	12.2	12.2	12.9	13.0	12.2	11.3	00	0	0.7	8.8	0	0	0	0	0	0	1009.5	1.2	0.0	2.2	Hail or ice pellets	
09	8	25	02	02	97	12.6	66	16.8	5.6	4.0	11.7	11.6	12.4	12.7	12.2	11.4	00	0	0.0	5.3	0	0	0	0	0	0	1016.0	0.0	0.0	1.9	0	
10	2	36	02	02	97	15.2	60	20.9	4.1	2.9	10.9	11.1	12.4	12.8	12.2	11.4	00	0	0.0	11.8	0	0	0	0	0	0	1018.5	0.0	0.0	3.5	Thunder	
11	1	09	09	02	97	14.2	59	18.0	7.9	5.5	11.2	11.8	12.9	13.0	12.4	11.4	00	0	0.0	14.0	0	0	0	0	0	0	1020.5	0.0	0.0	2.9	0	
12	7	09	13	02	97	13.7	73	18.5	7.0	4.9	11.2	11.6	12.8	13.0	12.5	11.4	00	0	1.1	6.4	0	0	0	0	0	0	1020.0	3.2	0.0	2.7	Gale	
13	8	05	05	60	95	11.5	94	14.2	10.5	9.2	12.7	12.8	13.3	13.1	12.4	11.6	10	0	0.7	0.0	0	0	0	0	0	0	1014.0	1.4	0.0	0.6	0	
14	7	33	02	02	97	14.2	71	17.8	11.5	10.9	13.3	12.8	12.9	12.9	12.4	11.6	10	0	18.7	1.0	0	0	0	0	0	0	1008.5	6.2	0.0	0.2	Fog at 09GMT	
15	7	23	02	02	97	13.7	89	15.3	12.4	12.7	13.6	13.4	13.7	13.2	12.4	11.6	10	0	3.2	1.8	0	0	0	0	0	0	1001.0	1.0	0.0	0.9	0	
16	7	22	05	02	97	14.6	57	16.1	7.2	6.7	12.8	12.6	13.8	13.1	12.5	11.8	10	0	1.7	7.0	0	0	0	0	0	0	1003.0	1.2	0.0	3.4	Air frost	
17	8	23	13	80	97	11.1	92	16.1	8.0	7.3	12.7	12.2	12.9	13.0	12.5	11.7	10	0	2.9	3.8	0	0	0	0	0	0	1004.0	0.9	0.0	1.7	0	
18	5	22	13	02	97	14.6	68	16.0	8.1	8.0	11.6	11.8	12.7	13.0	12.3	11.8	10	0	0.4	6.6	0	0	0	0	0	0	1010.0	0.2	0.0	2.0	Ground frost	
19	7	21	05	02	97	15.3	71	17.3	9.6	8.5	12.6	12.7	12.9	13.0	12.4	11.8	10	0	1.4	7.0	0	0	0	0	0	0	1015.5	0.7	0.0	2.1	0	
20	7	23	02	02	97	16.1	58	18.6	7.6	5.9	12.2	12.2	12.8	13.0	12.4	11.8	10	0	0.1	6.3	0	0	0	0	0	0	1020.0	0.1	0.0	2.4	0.2mm precipitation	
21	7	22	09	02	97	15.5	60	20.2	7.5	7.0	12.2	12.2	13.1	13.2	12.5	11.8	10	0	0.0	10.4	0	0	0	0	0	0	1014.0	0.0	0.0	2.4	13	
22	2	22	09	02	97	16.6	52	19.6	6.6	5.0	11.6	12.2	13.5	13.6	12.6	11.9	10	0	0.0	8.5	0	0	0	0	0	0	1016.0	0.0	0.0	2.4	1.0mm precipitation	
23	1	21	09	02	97	18.7	53	21.2	8.2	6.7	14.0	13.8	14.2	13.8	13.0	12.0	10	0	0.0	11.4	0	0	0	0	0	0	1016.5	0.0	0.0	2.8	9	
24	0	05	05	02	97	18.8	52	25.0	7.7	7.2	13.4	13.4	14.5	14.1	13.3	12.2	00	0	0.0	15.0	0	0	0	0	0	0	1019.0	0.0	0.0	3.1	5.0mm precipitation	
25	8	09	05	02	97	16.7	66	24.7	12.4	10.1	15.8	15.6	16.0	15.3	13.7	12.4	00	0	4.5	3.2	0	0	0	0	0	0	1012.5	3.9	0.0	2.0	1	
26	8	22	02	21	97	13.8	71	18.0	12.0	12.0	15.1	15.6	16.4	15.5	14.0	12.5	10	0	1.6	8.8	0	0	0	0	0	0	1011.5	2.3	0.0	1.8	No sunshine	
27	8	23	02	60	96	11.2	86	18.1	7.9	6.0	13.2	13.4	14.6	15.0	14.2	12.7	10	0	2.0	0.2	0	0	0	0	0	0	1021.0	4.0	0.0	0.3	1	
28	8	21	02	02	97	18.1	72	22.7	11.2	10.4	14.7	14.4	14.6	14.4	13.7	12.8	10	0	0.0	2.2	0	0	0	0	0	0	1028.0	0.0	0.0	1.5	May 2009 was a sunny, dry and	
29	0	03	02	02	97	22.0	65	25.0	10.7	10.0	14.5	14.8	15.5	15.0	13.8	12.8	10	0	0.0	14.3	0	0	0	0	0	0	1030.0	0.0	0.0	4.1	warm month. Almost half the	
30	0	09	05	02	97	21.1	55	24.3	10.3	8.7	15.0	14.9	15.5	15.4	14.5	12.9	00	0	0.0	15.1	0	0	0	0	0	0	1015.0	0.0	0.0	4.1	month's rain fell on the 14th,	
31	0	09	09	02	97	21.0	58	25.5	11.5	9.6	14.9	15.1	16.1	16.0	14.8	13.1	00	0	0.0	14.9	0	0	0	0	0	0	1014.5	0.0	0.0	3.5	while during the final week it	
Monthly means						15.2	67	19.2	8.9	7.5	12.8	12.9	13.6	13.5	12.7	11.8											1016.6				turned warm and sunny	
Monthly totals																				39.2	223.9						26.5	0.0	69.7	(especially on the final three		
Highest values						22.0		25.5	12.4	12.7	15.8	15.6	16.4	16.0	14.8	13.1			18.7	15.1							6.2	0.0	4.1	days) with temperatures		
Lowest values						10.7	50	14.2	3.0	1.8	10.9	11.0	12.1	11.9	11.2	10.7																reaching 25C.
1971-2000 monthly climatological averages						73	17.4	8.0	5.6	11.0	11.2	12.4	12.4	11.5	10.5			50.9	187.6									1015.9	37.2	0.1	69.1	

Key
 DD: date
 07GMT observations
 N cloud cover (oktas, 9=obsured) dd wind direction (degrees/10)
 ff wind speed (knots)
 ww present weather code
 1 cloud decreasing 50 intermittent slight drizzle
 2 sky not changing 60 intermttent slight rain
 3 cloud increasing 63 continuous moderate rain
 21 recent rain shower 80 slight rain hower
 VV visibility (00-50 metres/100, 94 very poor, 95 poor, 96 moderate, 97 good)
 Soil temperatures are for 0700GMT beneath bare soil (5, 10, 20cm) or grass (30, 50, 100cm)
 09GMT observations
 Temp temperature (degC) RH relative humidity (%)
 E state of ground (00 dry, 10 moist, 20 wet, 90 cracked) SS snow depth (cm)
 Press air pressure (mb)
 24 hour readings
 Max maximum temperature (degC) beginning 09GMT Min minimum temperature (degC) ending 09GMT
 Gmin grass minimum temperature (degC) ending 09GMT Rain precipitation beginning 09GMT
 Sun sunshine (hours) sunrise-sunset Rain hrs hours of rainfall (>0.1mm/h) 09-09GMT
 Fr. Hrs hours of air frost (00-24GMT) Pch Evap Piche evaporation (ml) beginning 09GMT
 Days with
 S snow(5) or sleet(1) falling L 50% snow cover at 09GMT H hail or ice pellets
 T thunder heard G gale F fog at 09GMT
 This information (and data for earlier months) is also available at <http://www.met.rdg.ac.uk/~brugge>

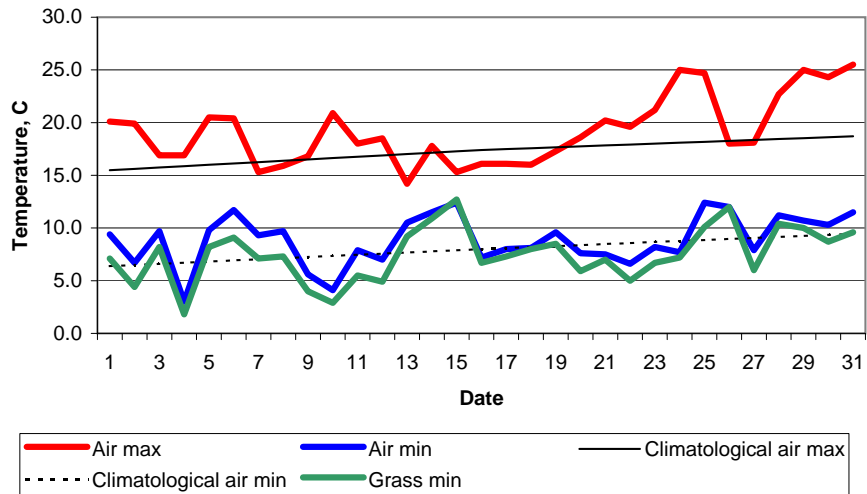
Daily soil temperatures, 0700GMT



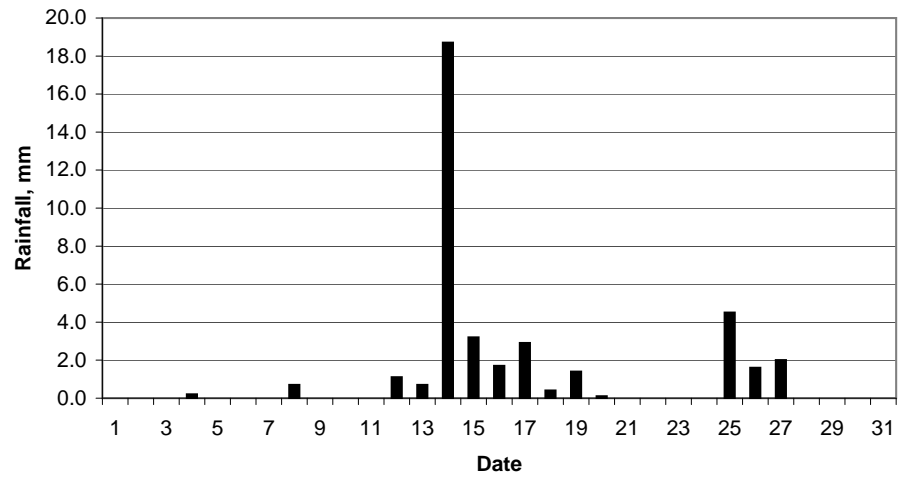
Mean sea level pressure, 0900GMT



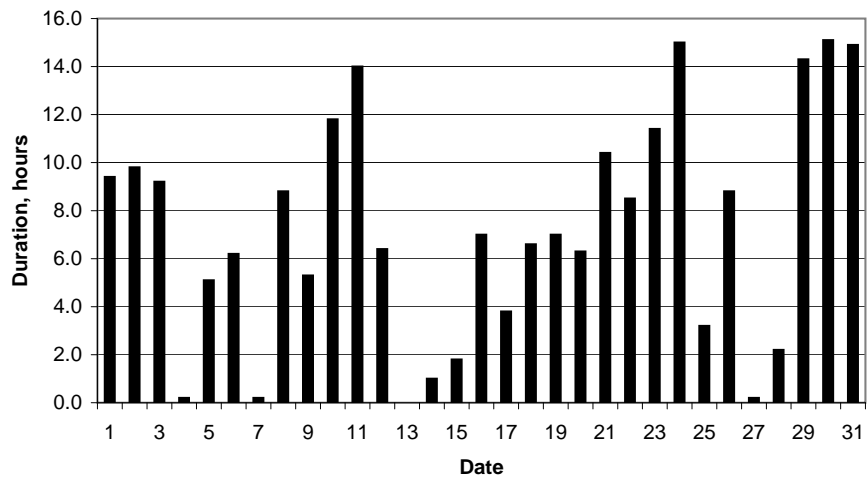
Daily temperature extremes



Daily rainfall



Daily sunshine



Daily evaporation

