

MAIDENHEAD METEOROLOGICAL OBSERVATIONS FOR MAY 2007

DD	N	dd	ff	ww	VV	0900GMT		Temperature				Soil temperatures (depth in cm)						E	SS	Rain	Sun	S	L	H	T	G	F	Press	Rain	Fr.	Pch			
						Temp	RH	Max	Min	Gmin	5	10	20	30	50	100	hrs												hrs	Evap				
01	0	05	09	02	97	17.8	53	22.5	9.4	5.5	12.2	12.8	14.0	14.1	13.3	12.1	90	0	0.0	14.2	0	0	0	0	0	0	0	1015.5	0.0	0.0	5.5	Number of		
02	0	04	13	02	97	17.6	54	23.2	9.7	5.1	12.6	13.3	14.3	14.5	13.6	12.3	90	0	0.0	14.9	0	0	0	0	0	0	1016.5	0.0	0.0	4.1	days with			
03	8	05	09	02	97	10.2	77	16.2	7.1	3.8	12.8	13.4	14.5	14.8	13.8	12.5	90	0	tr	8.6	0	0	0	0	0	0	1019.5	0.0	0.0	2.2	2007			
04	8	04	09	02	97	10.2	80	17.2	8.8	6.2	12.3	12.9	14.0	14.1	13.6	12.5	90	0	0.0	8.8	0	0	0	0	0	0	1018.0	0.0	0.0	2.6	snow/sleet falling			
05	8	09	13	02	97	10.3	74	16.0	9.6	8.8	12.8	12.8	14.0	14.1	13.5	12.6	90	0	0.0	5.5	0	0	0	0	0	0	1021.0	0.0	0.0	1.6	0			
06	8	22	09	02	97	14.5	89	20.3	6.1	5.2	12.7	12.4	13.1	13.4	13.2	12.6	90	0	2.6	2.9	0	0	0	0	0	0	1018.5	5.9	0.0	2.6	50% snow cover 09GMT			
07	8	23	09	60	97	15.9	92	19.4	13.6	11.8	14.5	14.4	14.2	13.9	13.2	12.6	10	0	1.0	6.0	0	0	0	0	0	0	1010.0	0.8	0.0	1.8	0			
08	8	19	05	02	97	13.3	77	19.4	9.9	7.9	12.2	12.5	13.4	13.9	13.2	12.5	10	0	0.1	4.4	0	0	0	0	0	0	1011.0	0.2	0.0	2.6	Hail or ice pellets			
09	8	21	02	02	97	13.0	79	15.1	10.6	9.6	12.9	13.3	13.9	14.0	13.3	12.5	10	0	2.2	0.0	0	0	0	0	0	0	1015.0	1.8	0.0	1.0	0			
10	6	22	05	03	97	13.5	72	16.4	9.4	6.9	12.1	12.3	13.5	13.8	13.2	12.5	10	0	10.3	0.7	0	0	0	0	0	0	1009.5	9.0	0.0	0.9	Thunder			
11	7	25	13	02	97	12.9	81	16.9	8.0	6.6	11.7	12.2	13.4	13.5	13.3	12.5	10	0	3.4	2.5	0	0	0	0	0	0	1006.5	2.0	0.0	1.1	0			
12	8	22	13	80	97	15.9	71	17.2	10.1	7.6	11.6	12.2	13.6	13.6	13.2	12.6	10	0	3.9	3.6	0	0	0	0	0	0	1005.0	0.4	0.0	1.8	Gale			
13	8	12	02	02	97	12.8	94	15.0	9.7	7.1	12.8	12.8	13.5	13.8	13.3	12.6	10	0	8.5	1.4	0	0	0	0	0	0	1004.0	5.8	0.0	0.7	0			
14	8	23	02	02	97	12.0	93	12.7	10.7	9.1	12.1	12.6	12.9	13.5	13.1	12.6	10	0	1.5	2.5	0	0	0	0	0	0	1002.5	2.0	0.0	0.6	Fog at 09GMT			
15	7	25	02	03	97	12.7	92	17.2	4.4	2.1	10.3	10.4	11.7	12.7	12.9	12.6	10	0	5.8	2.5	0	0	0	0	0	0	1015.0	3.9	0.0	0.7	0			
16	8	29	09	02	97	13.0	74	16.9	9.6	7.6	12.1	12.2	12.8	13.0	12.5	12.6	10	0	4.0	2.4	0	0	0	0	0	0	1014.5	7.0	0.0	0.6	Air frost			
17	8	27	05	60	96	16.7	93	19.0	12.9	10.2	13.3	13.4	13.6	13.5	12.8	12.5	10	0	0.1	2.9	0	0	0	0	0	0	1012.0	0.1	0.0	1.1	0			
18	8	22	02	50	96	19.0	72	22.0	11.5	8.4	13.9	13.8	13.9	13.9	13.0	12.5	10	0	1.3	8.3	0	0	0	0	0	0	1014.5	0.7	0.0	2.0	Ground frost			
19	1	27	09	02	97	14.4	57	17.2	8.4	7.0	12.3	12.8	13.9	14.5	13.5	12.6	10	0	0.0	11.9	0	0	0	0	0	0	1012.5	0.0	0.0	2.4	0			
20	2	32	02	02	97	15.0	65	19.6	4.6	4.1	11.7	11.9	13.2	14.0	13.6	12.8	10	0	tr	9.8	0	0	0	0	0	0	1017.0	0.0	0.0	2.4	0.2mm precipitation			
21	8	36	02	60	97	13.5	80	17.5	11.9	10.1	13.4	13.9	14.1	14.5	13.7	12.9	10	0	0.5	0.0	0	0	0	0	0	0	1018.5	1.1	0.0	1.3	18			
22	1	32	02	02	97	17.5	56	22.8	9.6	7.5	12.7	12.8	13.8	14.0	13.5	13.0	10	0	0.0	14.2	0	0	0	0	0	0	1022.5	0.0	0.0	1.9	1.0mm precipitation			
23	0	21	02	02	97	20.4	48	25.4	9.8	8.1	13.4	13.8	14.5	15.0	13.8	13.0	10	0	0.0	14.9	0	0	0	0	0	0	1024.5	0.0	0.0	2.9	15			
24	0	22	02	02	97	22.0	62	25.1	14.1	11.1	15.6	15.7	16.2	15.9	14.4	13.1	00	0	0.0	7.7	0	0	0	0	0	0	1018.5	0.0	0.0	2.6	5.0mm precipitation			
25	1	23	02	02	97	18.7	70	24.0	13.6	11.1	16.1	16.3	17.0	16.1	14.9	13.3	00	0	0.3	7.7	0	0	0	0	0	0	1010.5	0.8	0.0	2.4	5			
26	8	36	05	02	97	11.6	83	15.4	10.6	10.1	14.9	15.6	16.2	16.5	15.2	13.5	10	0	9.6	0.8	0	0	0	0	0	0	1008.0	7.9	0.0	0.9	No sunshine			
27	8	05	05	63	95	10.5	98	11.1	9.6	9.6	12.8	13.3	14.9	15.4	14.8	13.5	10	0	35.7	0.0	0	0	0	0	0	0	998.5	21.7	0.0	0.6	4			
28	8	01	19	21	96	6.8	89	11.0	6.1	5.6	9.9	10.4	12.2	13.9	14.1	13.6	10	0	3.3	0.0	0	0	0	0	0	0	1005.0	6.8	0.0	0.6	A wet month due mainly to the			
29	7	23	05	03	97	11.0	65	16.5	3.9	2.7	9.6	10.0	11.5	12.6	13.1	13.5	10	0	0.4	10.2	0	0	0	0	0	0	1012.0	0.8	0.0	1.4	35.7mm that fell on the 27th -			
30	8	15	02	60	97	11.6	89	17.1	4.7	3.9	11.1	11.2	12.0	13.7	13.0	13.2	10	0	2.5	3.1	0	0	0	0	0	0	1005.0	3.4	0.0	1.0	the wettest May day since			
31	7	14	05	02	97	16.6	75	19.9	7.7	6.0	12.1	11.9	12.4	12.9	12.8	13.1	10	0	0.0	8.9	0	0	0	0	0	0	1009.5	0.0	0.0	0.9	before 1981 although 35.6mm			
Monthly means						14.2	76	18.2	9.2	7.3	12.6	12.9	13.7	14.1	13.5	12.8												1012.6				did fall on a single day in May		
Monthly totals																				97.0	181.3							82.1	0.0	54.8	1985. Temperatures were again			
Highest values						22.0		25.4	14.1	11.8	16.1	16.3	17.0	16.5	15.2	13.6				35.7	14.9							21.7	0.0	5.5	exceeded on two occasions.			
Lowest values						6.8	48	11.0	3.9	2.1	9.6	10.0	11.5	12.6	12.5	12.1																		
1971-2000 monthly climatological averages						73	17.4	8.0	5.6	11.0	11.2	12.4	12.4	11.5	10.5						50.9	187.6							1015.9	37.2	0.1	69.1		

Key

DD: date

07GMT observations

N	cloud cover (oktas, 9=obscured)	dd	wind direction (degrees/10)
ff	wind speed (knots)		
ww	present weather code		
1	cloud decreasing	50	intermittent slight drizzle
2	sky not changing	60	intermittent slight rain
3	cloud increasing	63	continuous moderate rain
21	recent rain shower	80	slight rain hower
VV	visibility (00-50 metres/100, 94 very poor, 95 poor, 96 moderate, 97 good)		

Soil temperatures are for 0700GMT beneath bare soil (5, 10, 20cm) or grass (30, 50, 100cm)

09GMT observations

Temp	temperature (degC)	RH	relative humidity (%)
E	state of ground (00 dry, 10 moist, 20 wet, 90 cracked)	SS	snow depth (cm)
Press	air pressure (mb)		

24 hour readings

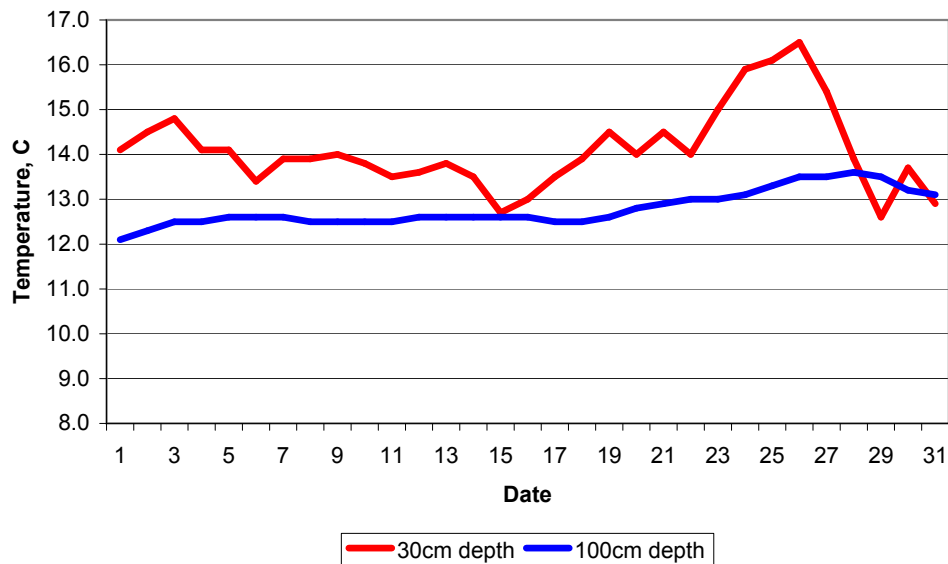
Max	maximum temperature (degC) beginning 09GMT	Min	minimum temperature (degC) ending 09GMT
Gmin	grass minimum temperature (degC) ending 09GMT	Rain	precipitation beginning 09GMT
Sun	sunshine (hours) sunrise-sunset	Rain hrs	hours of rainfall (>0.1mm/h) 09-09GMT
Fr. Hrs	hours of air frost (00-24GMT)	Pch Evap	Piche evaporation (ml) beginning 09GMT

Days with

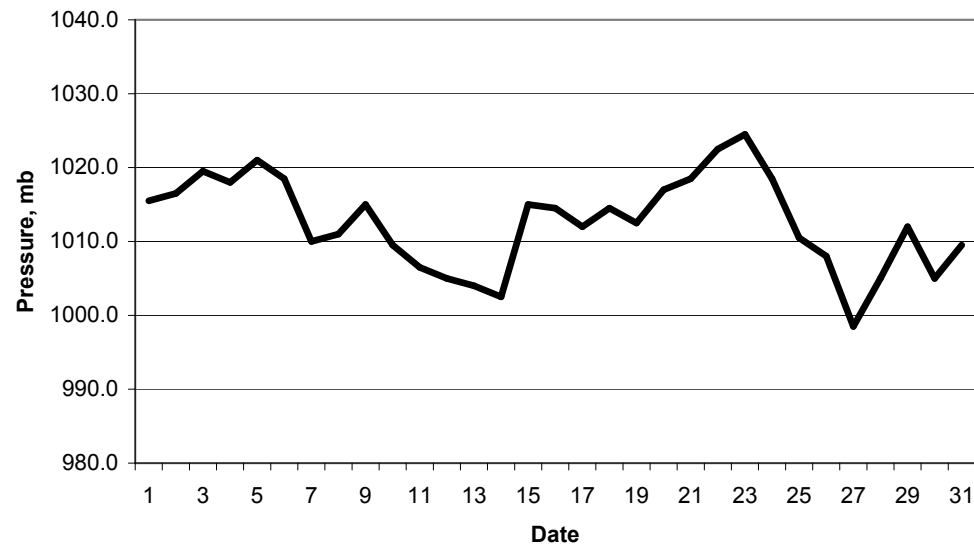
S	snow(5) or sleet(1) falling	L	50% snow cover at 09GMT	H	hail or ice pellets
T	thunder heard	G	gale	F	fog at 09GMT

This information (and data for earlier months) is also available at <http://www.met.rdg.ac.uk/~brugge>

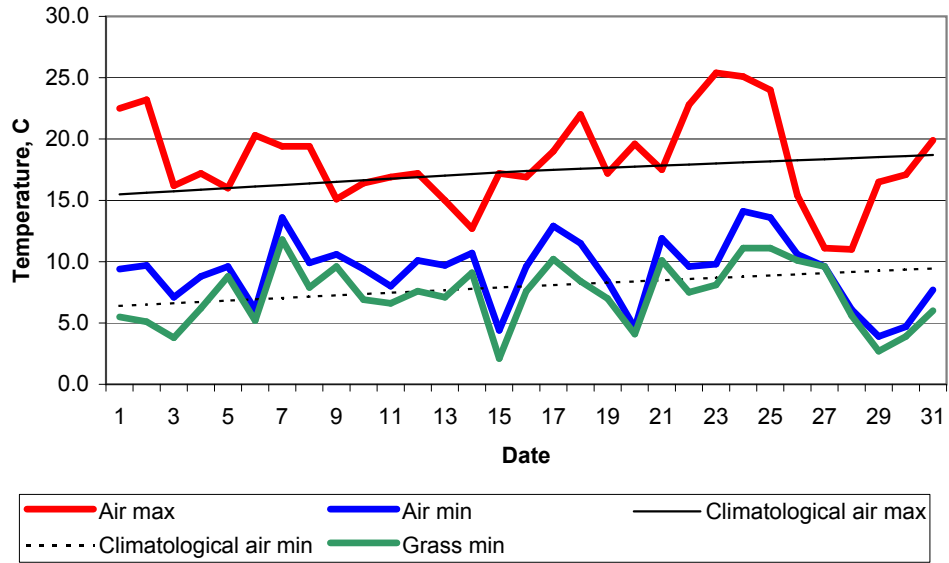
Daily soil temperatures, 0700GMT



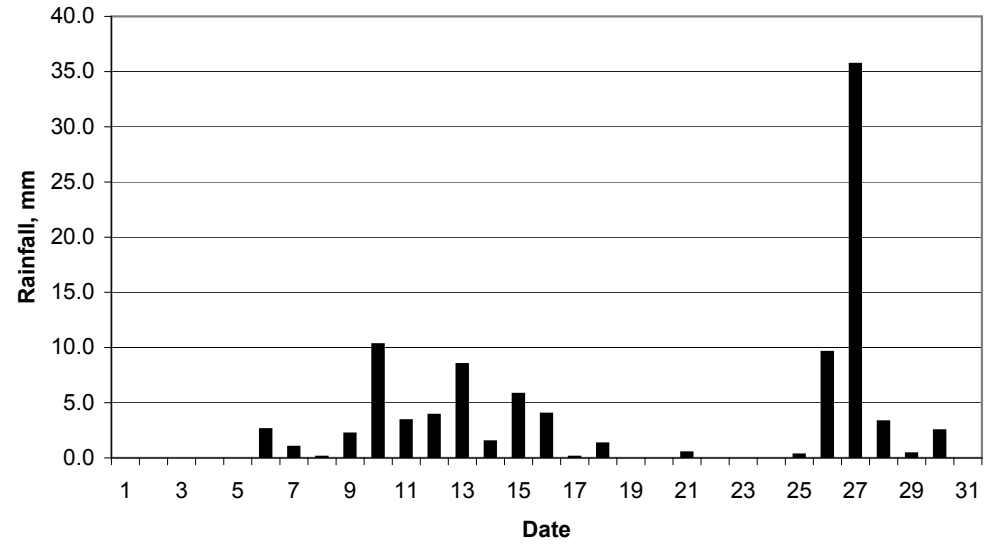
Mean sea level pressure, 0900GMT



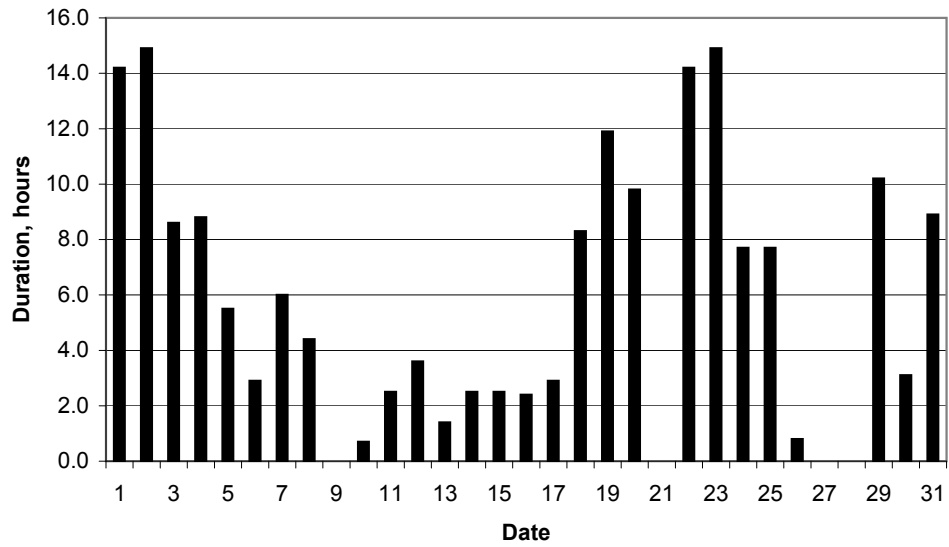
Daily temperature extremes



Daily rainfall



Daily sunshine



Daily evaporation

