

MAIDENHEAD METEOROLOGICAL OBSERVATIONS FOR MAY 2006

DD	N	dd	ff	ww	VV	0900GMT		Temperature		Soil temperatures (depth in cm)						E	SS	Rain	Sun	S	L	H	T	G	F	Press	Rain	Fr.	Pch			
						Temp	RH	Max	Min	Gmin	5	10	20	30	50												100	hrs	hrs		Evap	
01	8	18	05	21	97	12.0	89	15.1	5.8	8.0	10.1	10.1	10.5	10.7	10.2	10.0	10	0	0.0	4.5	0	0	0	0	0	0	1000.0	0.0	0.0	1.6	Number of days with 2006 normal Snow/sleet falling 0 0.1 50% snow cover 09GMT 0 0.0 Hail or ice pellets 0 0.5 Thunder 3 1.9 Gale 0 0.0 Fog at 09GMT 0 0.0 Air frost 0 0.1 Ground frost 0 2.2 0.2mm precipitation 18 12.2 1.0mm precipitation 15 8.8 5.0mm precipitation 7 2.9 No sunshine 1 2.8 A rather wet month, due to frequent falls of light or moderate rainfall - no really wet days. Mean temperature above the average; an early start to summer with 27.8C on the 4th. A rather dull month overall, with relatively small amounts of sunshine during the second half of the month. Unusually cyclonic 19th-22nd.	
02	6	15	02	02	97	13.3	58	15.6	2.8	1.4	8.4	8.8	10.2	10.9	10.3	10.0	10	0	0.0	4.0	0	0	0	0	0	1008.5	0.0	0.0	2.8			
03	6	20	02	01	96	15.6	81	19.9	6.5	4.9	10.0	9.9	10.8	11.0	10.3	10.0	10	0	0.0	5.3	0	0	0	0	0	1013.0	0.0	0.0	1.9			
04	6	09	02	02	97	19.9	69	27.8	12.8	7.6	12.1	11.9	12.0	11.5	10.5	10.0	10	0	0.1	10.3	0	0	0	0	0	1014.0	0.1	0.0	4.4			
05	0	22	02	02	97	16.6	76	21.8	10.2	7.9	12.5	12.8	13.5	12.8	11.2	10.1	00	0	0.0	13.8	0	0	0	0	0	1019.5	0.0	0.0	2.5			
06	4	18	05	02	97	14.6	70	17.1	5.1	4.9	10.6	11.4	12.9	13.0	11.8	10.4	00	0	3.4	3.5	0	0	0	0	0	1020.0	2.8	0.0	1.2			
07	8	23	02	02	97	13.6	87	18.1	12.0	7.6	13.4	12.9	12.9	12.6	11.7	10.7	10	0	10.9	2.0	0	0	0	0	0	1017.5	3.3	0.0	1.2			
08	8	32	05	61	97	12.6	97	15.3	11.7	10.2	12.8	12.8	13.2	13.0	11.8	10.8	10	0	2.1	2.3	0	0	0	1	0	1008.5	2.0	0.0	0.7			
09	8	27	02	02	96	13.2	96	18.9	8.9	5.9	11.9	12.1	12.6	12.5	11.7	10.9	10	0	0.0	3.3	0	0	0	0	0	1017.5	0.0	0.0	1.2			
10	5	36	02	02	97	15.0	75	23.0	9.6	7.1	12.4	12.6	13.0	12.9	11.8	11.0	10	0	tr	7.2	0	0	0	1	0	1019.0	0.0	0.0	1.6			
11	2	23	02	02	97	17.4	54	24.5	7.8	5.2	11.9	12.5	13.5	13.4	12.2	11.1	10	0	0.0	14.1	0	0	0	0	0	1019.0	0.0	0.0	3.2			
12	2	36	02	02	97	18.8	66	24.9	7.7	5.1	12.4	12.8	14.0	13.9	12.7	11.2	00	0	0.0	11.8	0	0	0	0	0	1016.0	0.0	0.0	3.0			
13	2	27	05	02	97	14.3	85	18.9	11.9	9.9	14.0	13.9	14.9	14.4	12.9	11.5	00	0	0.4	4.0	0	0	0	1	0	1015.0	0.5	0.0	1.0			
14	8	00	00	02	96	13.0	91	16.9	11.1	10.1	13.6	13.8	14.1	14.0	12.8	11.6	10	0	0.0	0.2	0	0	0	0	0	1021.0	0.0	0.0	1.3			
15	8	15	02	02	96	14.0	90	17.4	11.1	9.9	13.2	13.3	13.7	13.6	12.7	11.8	10	0	1.4	0.0	0	0	0	0	0	1014.5	1.0	0.0	1.1			
16	6	22	02	03	97	14.8	77	17.0	10.3	7.5	12.8	13.0	13.7	13.5	12.7	11.8	10	0	1.0	3.0	0	0	0	0	0	1014.5	1.2	0.0	1.0			
17	8	20	02	02	97	13.2	92	17.2	10.5	8.1	13.2	13.1	13.6	13.5	12.7	11.9	10	0	4.8	0.1	0	0	0	0	0	1017.5	6.2	0.0	1.0			
18	8	23	05	02	97	14.7	87	18.3	12.5	10.2	13.6	13.4	13.8	13.6	12.7	11.9	10	0	3.0	6.9	0	0	0	0	0	1008.0	1.9	0.0	1.6			
19	8	22	13	21	97	13.1	86	17.2	11.5	10.9	13.4	13.4	13.6	13.6	12.7	12.0	10	0	10.3	4.1	0	0	0	0	0	1001.0	5.2	0.0	1.6			
20	6	24	13	02	97	12.7	71	16.8	11.0	8.2	12.8	13.1	13.2	13.6	12.8	12.0	10	0	0.9	2.7	0	0	0	0	0	989.0	2.0	0.0	1.7			
21	8	23	05	02	97	13.1	75	14.8	10.9	10.2	13.8	13.6	13.6	13.6	12.8	12.0	10	0	8.3	1.3	0	0	0	0	0	1000.0	6.7	0.0	0.8			
22	8	18	13	02	96	12.4	96	15.4	10.1	7.8	12.6	12.6	13.0	13.1	12.6	12.0	20	0	5.3	1.0	0	0	0	0	0	987.0	8.0	0.0	0.7			
23	7	27	05	02	97	12.6	64	15.3	5.8	4.6	11.2	11.5	12.4	13.0	12.5	12.1	10	0	2.8	8.0	0	0	0	0	0	1014.0	0.8	0.0	1.5			
24	7	23	13	02	97	13.4	71	15.0	10.0	7.1	11.7	11.8	12.5	13.0	12.3	12.0	10	0	14.1	3.2	0	0	0	0	0	1014.0	6.9	0.0	1.1			
25	8	27	05	02	96	13.8	85	18.5	9.4	8.2	12.6	12.5	12.8	13.0	12.5	12.1	10	0	5.6	8.3	0	0	0	0	0	1014.5	3.2	0.0	1.6			
26	8	23	05	61	95	15.1	99	19.2	11.0	11.0	13.4	13.4	13.6	13.3	12.6	12.1	10	0	0.0	4.9	0	0	0	0	0	1014.5	0.0	0.0	1.1			
27	8	22	02	02	97	15.5	84	16.9	13.5	13.0	14.4	14.2	13.9	13.5	12.5	12.1	10	0	5.2	0.6	0	0	0	0	0	1020.0	3.2	0.0	0.9			
28	0	24	05	02	97	14.9	62	17.9	10.2	8.0	12.5	12.5	13.5	13.6	12.6	12.1	10	0	0.5	4.5	0	0	0	0	0	1021.0	0.3	0.0	2.2			
29	7	27	02	02	97	10.9	84	15.6	10.1	8.0	12.0	12.0	12.5	13.5	12.7	12.2	10	0	2.3	5.5	0	0	1	0	0	1015.0	0.7	0.0	1.3			
30	8	32	05	02	97	10.7	67	15.4	5.7	4.8	10.0	10.0	11.0	13.4	12.7	12.2	10	0	0.0	6.2	0	0	0	0	0	1020.5	0.0	0.0	2.2			
31	0	33	05	02	97	11.0	63	16.5	6.0	5.0	10.5	10.5	11.0	13.4	12.8	12.2	10	0	0.0	8.8	0	0	0	0	0	1025.0	0.0	0.0	2.1			
Monthly means						14.1	79	18.1	9.5	7.7	12.3	12.3	12.9	13.0	12.2	11.4										1012.9						
Monthly totals																				82.4	155.4						56.0	0.0	51.1			
Highest values						19.9		27.8	13.5	13.0	14.4	14.2	14.9	14.4	12.9	12.2				14.1	14.1						8.0	0.0	4.4			
Lowest values						10.7	54	14.8	2.8	1.4	8.4	8.8	10.2	10.7	10.2	10.0																
1971-2000 monthly climatological averages						73	17.4	8.0	5.6	11.0	11.2	12.4	12.4	11.5	10.5						50.9	187.6						1015.9	37.2	0.1	69.1	

Key

DD: date

07GMT observations

N	cloud cover (oktas, 9=obscured)	dd	wind direction (degrees/10)
ff	wind speed (knots)		
ww	present weather code		
1	cloud decreasing	25	recent rain shower
2	sky not changing	60	intermittent slight rain
3	cloud increasing	61	continuous slight rain
21	recent rain shower		
VV	visibility (00-50 metres/100, 94 very poor, 95 poor, 96 moderate, 97 good)		

Soil temperatures are for 0700GMT beneath bare soil (5, 10, 20cm) or grass (30, 50, 100cm)

09GMT observations

Temp	temperature (degC)	RH	relative humidity (%)
E	state of ground (00 dry, 10 moist, 20 wet, 90 cracked)	SS	snow depth (cm)
Press	air pressure (mb)		

24 hour readings

Max	maximum temperature (degC) beginning 09GMT	Min	minimum temperature (degC) ending 09GMT
Gmin	grass minimum temperature (degC) ending 09GMT	Rain	precipitation beginning 09GMT
Sun	sunshine (hours) sunrise-sunset	Rain hrs	hours of rainfall (>0.1mm/h) 09-09GMT
Fr. Hrs	hours of air frost (00-24GMT)	Pch Evap	Piche evaporation (ml) beginning 09GMT

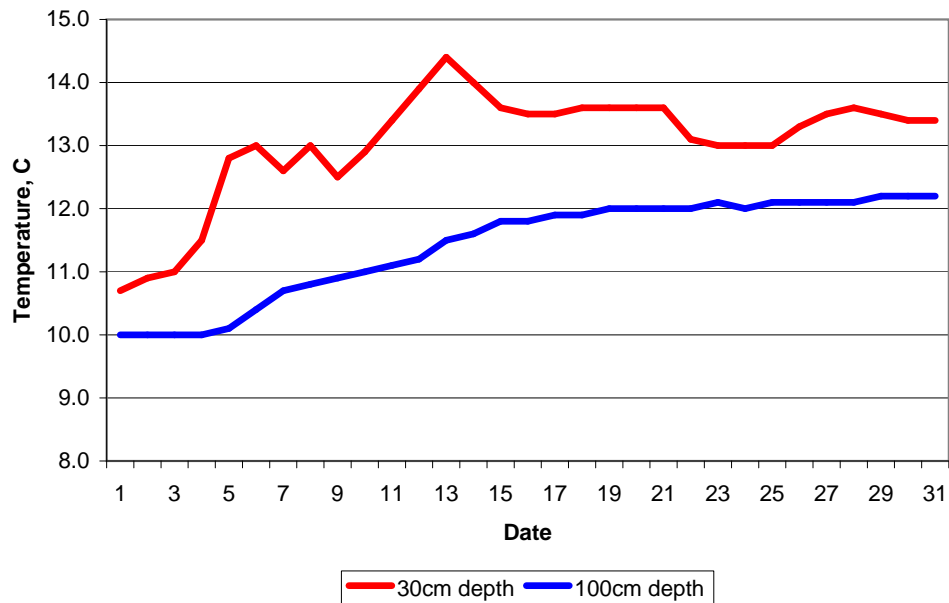
Days with

S	snow(5) or sleet(1) falling	L	50% snow cover at 09GMT	H	hail or ice pellets
T	thunder heard	G	gale	F	fog at 09GMT

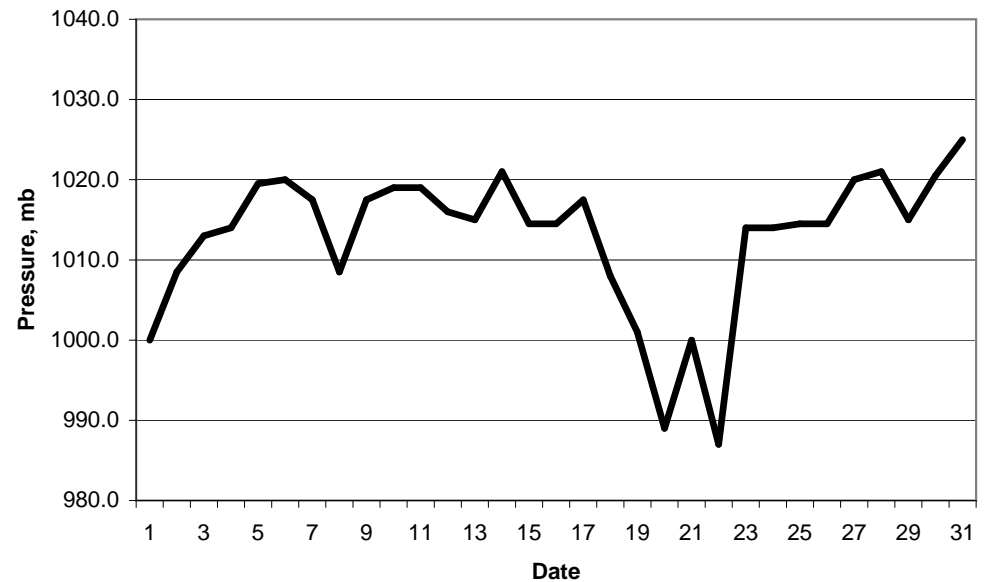
This information (and data for earlier months) is also available at

<http://www.met.rdg.ac.uk/~brugge>

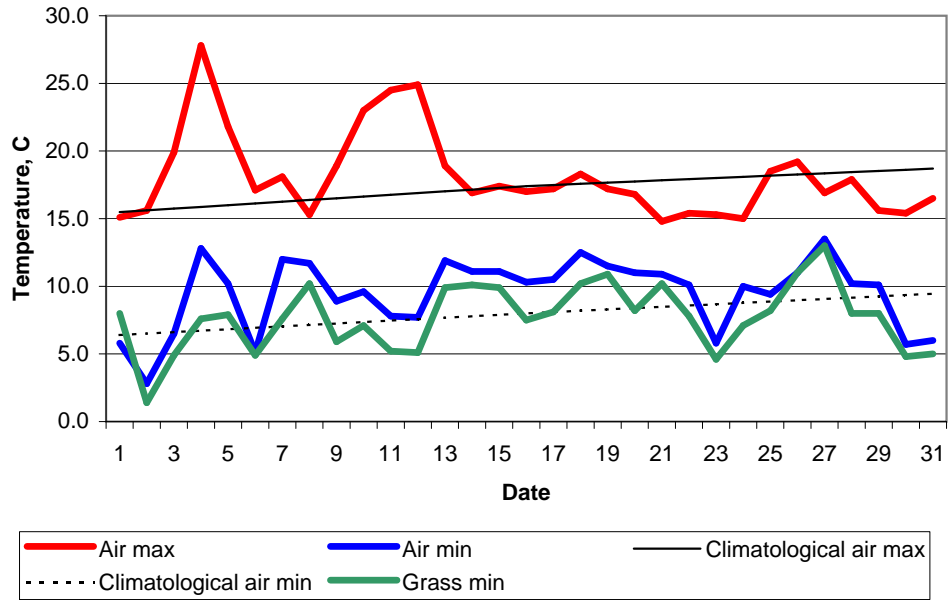
Daily soil temperatures, 0700GMT



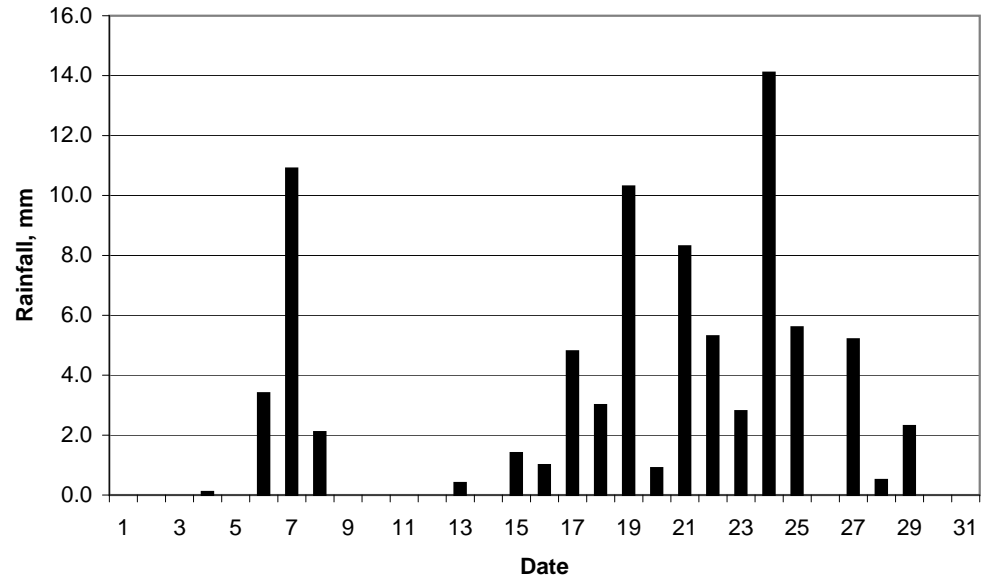
Mean sea level pressure, 0900GMT



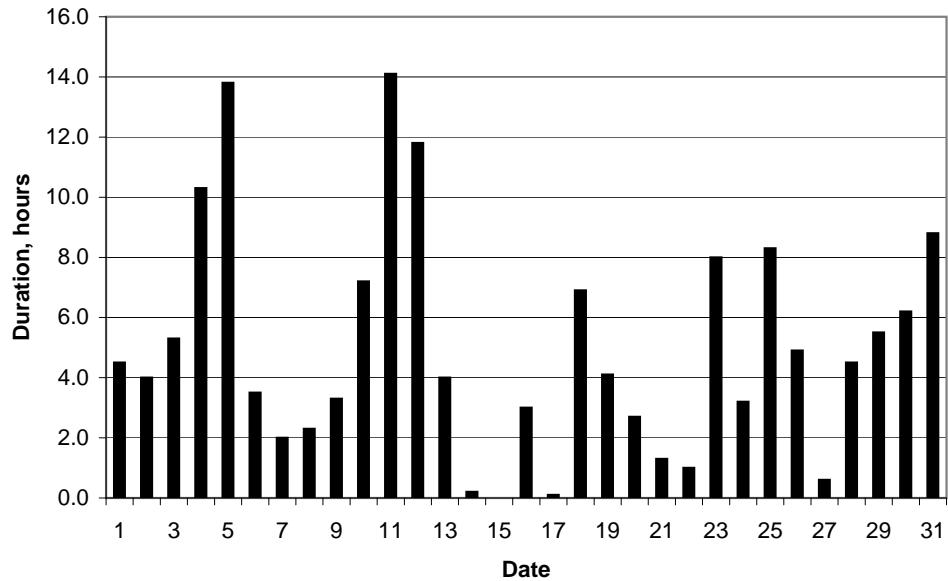
### Daily temperature extremes



### Daily rainfall



### Daily sunshine



### Daily evaporation

